

U.S.D.A. Forest Service Presents . . .



A Photographic History of the  
Lakewood-Laona Ranger District

May 2005



# USDA Forest Service Centennial



in caring for  
our natural legacy

[www.fs.fed.us/centennial](http://www.fs.fed.us/centennial)

The USDA is an equal opportunity  
provider and employer.  
FS-808c



U.S.D.A. Forest Service Photos

Celebrate the Forest Service Centennial and National Honor Day by enjoying these photos of the Lakewood half of the District.



U.S.D.A. Forest Service Photo





Lakewood District in the 1930's







Mountain Transplant Nursery, 1937







Digging Furrows for  
Tree Planting in the  
mid-1930's





Civilian Conservation Corps Crew Planting Trees in mid-1930's







U.S.D.A. Forest Service Photo

CCC Crew Building a Fire Line in the 1930's







U.S.D.A. Forest Service Photo

# Building a Fire Line in 1939





10-13-38

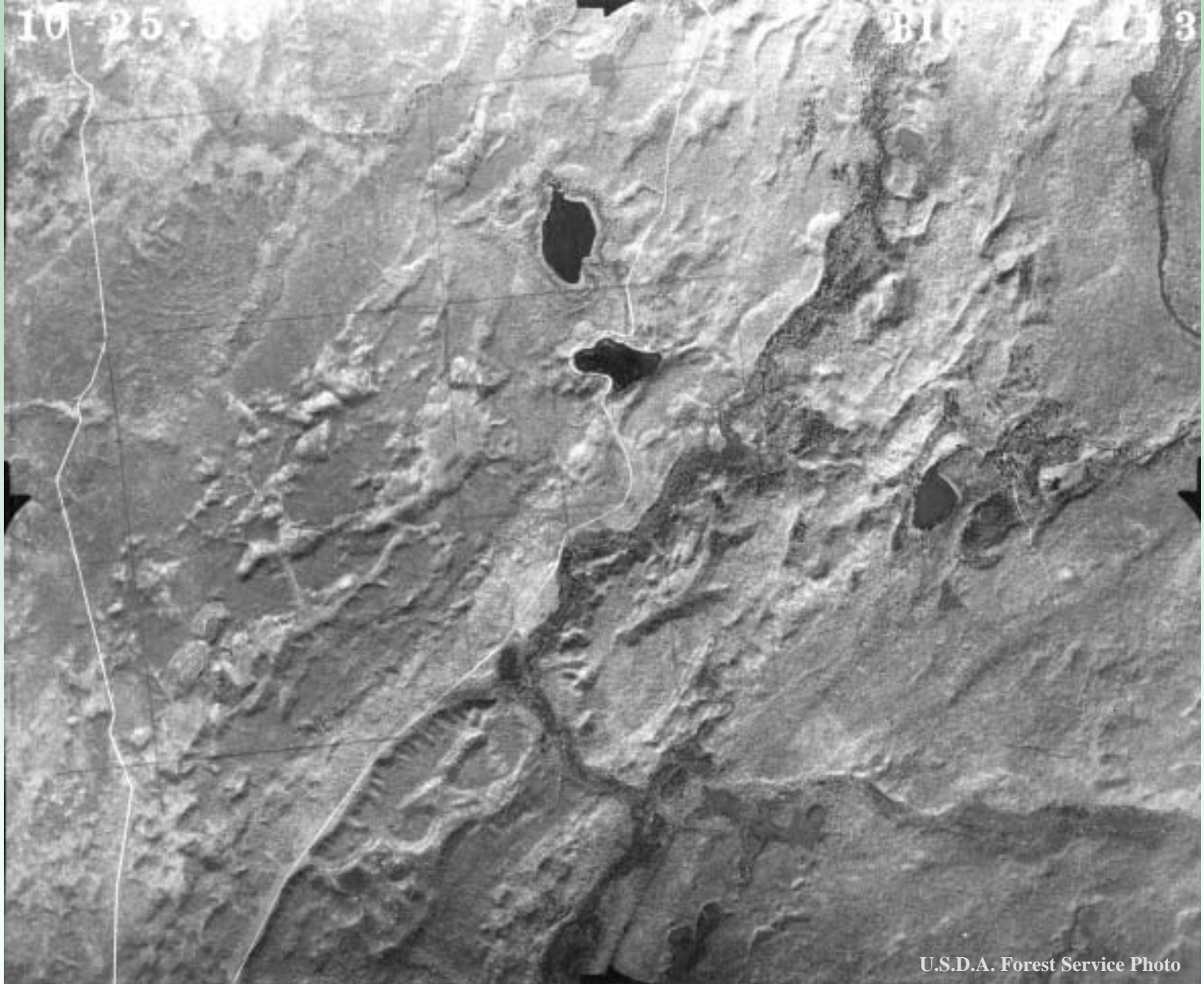
BIC-14-37  
BHW



U.S.D.A. Forest Service Photo

1938 Aerial Photograph of Boulder Lake





1938 Aerial Photograph of Mountain Lakes







FS Personnel on Logging Job During Winter Furlough, 1943





Lakewood Ranger Station, 1937







Ranger Station Building and Grounds, 1954







Blading Roads for Maintenance, 1954







Release Crew Moving to New Job, 1954







Planting Crew North of Highway 64, 1954







Looking North from Highway 64 at Planting Crew







Lakewood Mardi Gras Parade in the 1950's (from top of Firelight Bar)







Employee by Bear Trap at Lakewood Ranger Station, 1961





U.S.D.A. Forest Service Photo

Ranger Station Warehouse, Spring 1961







Bill Wolff Speaking to Fire Warden Meeting in Crooked Lake, March 1962





U.S.D.A. Forest Service Photo

Lakewood Ranger Station, March 31, 1963







International 4x4 with Pumper Unit at Ranger Station, March 1963





Constructing a Fire  
Tower During  
Winter so the Bolts  
Stay Tight







U.S.D.A. Forest Service Photo

Bill Wolff and Osbourn Fire Finder in the Boulder Fire Tower, 1937





Boulder Fire Lookout  
Tower – Oconto River  
Forest Tour Stop #5







Mountain Fire Lookout Tower





Bear Trail Fire, May 30<sup>th</sup>, 1961







1962 – Wildland Planter Working Area Burned by South Branch Fire of 1953







May 1963 - Machine Crew Planting Area Affected by South Branch Fire







Floats from the 1958 - 1961 Lakewood Mardi Gras Parades





Floats from the mid-80's in Lakewood Mardi Gras Parade







U.S.D.A. Forest Service Photo



U.S.D.A. Forest Service Photo



U.S.D.A. Forest Service Photo

FS and WI Conservation Dept.  
Building Red Oak Fish Shelters at  
Ada Lake, February 1963





Cutting Ice on Ada Lake for Fish Shelter, February 1963







WCD Truck Towing Shelter onto Ada Lake Ice, February 1963





Towing Shelter onto Ada Lake Ice, February 1963







Settling Shelter in Ada Lake, February 1963





Highway T New Location, May 1964







Forest Sign, Highway 32 south of Lakewood, September 1964





Blackwell Job Corps  
Planting Fish with WCD,  
1966







U.S.D.A. Forest Service Photo

Winter 1968-69



Winter is fun in a National Forest. Try a snowmobile trail or one of the ski areas.

**BOOT LAKE**



*Snowmobile Trail*



NICOLET  
*National Forest*

U. S. DEPARTMENT OF AGRICULTURE







Shooting Yellow Birch Branch with  
Rifle for Scion Collection, February  
1971





Osprey Nest  
Platform  
Installation







Osprey Nest  
Platform  
Installation



Osprey  
Nest  
Platform  
Installation







every second - on the **NICOLET** National Forest  
the equivalent of this plank (7.7 bd.ft.) is grown







U.S.D.A. Forest Service Photo



U.S.D.A. Forest Service Photos



U.S.D.A. Forest Service Photo

## Timber Production







Hardwood Management Training, 1959







At Work





U.S.D.A. Forest Service Photo



U.S.D.A. Forest Service Photo



Before and After Thinning  
Jack Pine on the Parker  
Sale, 1954





Loading Timber onto Railroad Cars, 1955







U.S.D.A. Forest Service Photo

Pine Stand on Highway F  
Before and After  
Sanitation Cut, 1955



U.S.D.A. Forest Service Photo







Pine Seedlings 6-7 Years After Aspen Cut on Old Superior Elec. Sale,  
May 1963







U.S.D.A. Forest Service Photo

Discing for Jack Pine Reproduction, May 1966







U.S.D.A. Forest Service Photo

Loading Timber on Diamond Roof Road (FR 2123)







Boulder Lake Road (FR 2116) Construction, April 1963







Building Campsites at Boulder Lake Campground, April 1963







Boulder Lake Campground Overflowing Capacity, 1955







Building Boulder Lake Forest Trail,  
May 1963







Constructing Rose Lake Boat Access, May 1963







First Camper at Boot Lake Campground, Robin Nest in Water Pump, June 1964







Blackwell Job Corps Constructing Ada Lake Campground, April 1968







Bass Lake Prior to Development, June 1963







Clearing Bass Lake Beach, June 1963





Bass Lake Change House Construction, July 1964







Bass Lake Change House, 1964





U.S.D.A. Forest Service Photo

Bass Lake Beach, June 2003







Mountain Lakes Campsite, 1990







U.S.D.A. Forest Service Photo

McCaslin Brook Snowmobile Bridge Leveling, 1991







Waupee Dam in the mid-1950's







Waupee Dam, Damaged and  
Needing Repairs, June 1991





U.S.D.A. Forest Service Photo

Waupee Dam Reconstruction, 1991







Drop Structure and Wing Walls







Waupee Flowage Without Water







Waupee Dam After Reconstruction







New Water Control Structure, Autumn 1991





Waupee Flowage, Autumn 1991







U.S.D.A. Forest Service Photo

Baseline Survey of Bluegill Creek Before Impoundment Construction







Surveying the Bluegill - Pickerel Lake Dam







U.S.D.A. Forest Service Photo

# Bluegill Creek Impoundment Construction, 1998







U.S.D.A. Forest Service Photo

# Culvert Replacement







U.S.D.A. Forest Service Photo

## Compacting Soil







Washed Stone Around Pipe





Bluegill Creek Impoundment Construction, 1998







Pouring Concrete to Form Drop Structure







Completed Drop Structure and Wing Walls







Looking Upstream at Completed Bluegill Creek Impoundment, 1998







Cultural Resource Site on Holts Ranch Road







## FS and Volunteers with Passport in Time Program







U.S.D.A. Forest Service Photo

## Bucks Ranch Hemlocks







C&M Crew Excavating Silt for Lakewood Landfill





U.S.D.A. Forest Service Photo



U.S.D.A. Forest Service Photo

U.S.D.A. Forest Service Photo



Placing Silt Cap on Lakewood  
Landfill, 1996







Employees Receiving Certificates of Merit







## Archibald Lake Tract

Forests like this once blanketed northern Wisconsin. They played an important part in Wisconsin's early economy. From the first sawmill in 1809, Wisconsin's forest industry burgeoned until it led the nation in 1892. Today Wisconsin's national and state forests and more than 3,000 privately-owned tree farms continue to provide products for the wood and paper industry.

Forest conservation measures began with a Special Commission on Forestry in 1867. Over the years, through the efforts of private individuals, organizations, corporations, and agencies, old-growth forests have been protected and will continue to exist for the enjoyment of generations to come. This 110-acre tract was acquired by the Forest Service from The Nature Conservancy with the generous assistance of private donations.



This area is dedicated in memory of Frederick and Sarah Weyerhaeuser, by their descendants, for instilling the values of family unity and the importance of conservation.

*This is not for ourselves, nor for our children. It is for our grandchildren.*

*Frederick Weyerhaeuser*

Dedicated May 13, 1983

## Cathedral Pines and the Archibald Lake Tract







South Branch of Oconto  
River Barrier-Free  
Fishing Trail, Built by  
Wisconsin Conservation  
Corps in 1992







North Branch of Oconto River from Pike's Peak Overlook, March 1992







Same View, July 2002







Employees on Sensitive Plant Trip







U.S.D.A. Forest Service Photo

Unnamed Drainage in Diamond Roof country





U.S.D.A. Forest Service Photo

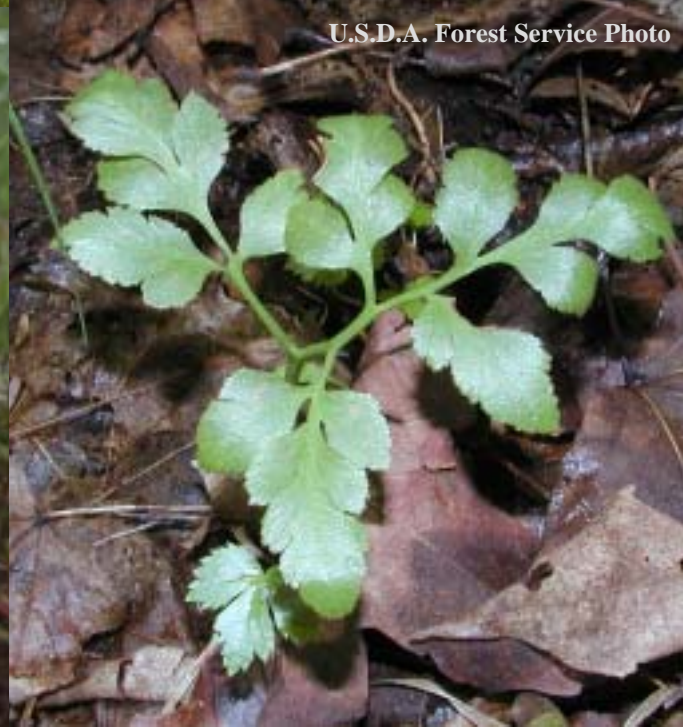


U.S.D.A. Forest Service Photo



U.S.D.A. Forest Service Photo

U.S.D.A. Forest Service Photo



U.S.D.A. Forest Service Photo



Some Rare Plants







U.S.D.A. Forest Service Photo

Training in Kotar Habitat Typing, August 2002







North on Twin Pine Road (FR 2107)







A.N.R. Pipeline Location Before Installation







A.N.R. Pipeline Construction Equipment







Equipment at Pipeline Location







U.S.D.A. Forest Service Photo

## A.N.R. Pipeline Installation







A.N.R. Pipeline - Rock Shield on Pipe







U.S.D.A. Forest Service Photo

Welding A.N.R. Pipeline







Pipeline Bridge Installation - Dozer and Backhoe in River







North Fork Thunder River Bridge Work







North Fork Thunder River Bridge Work







Pipeline Bridge Installation - Abutments on Gabions







Pipeline North Bridge Completed



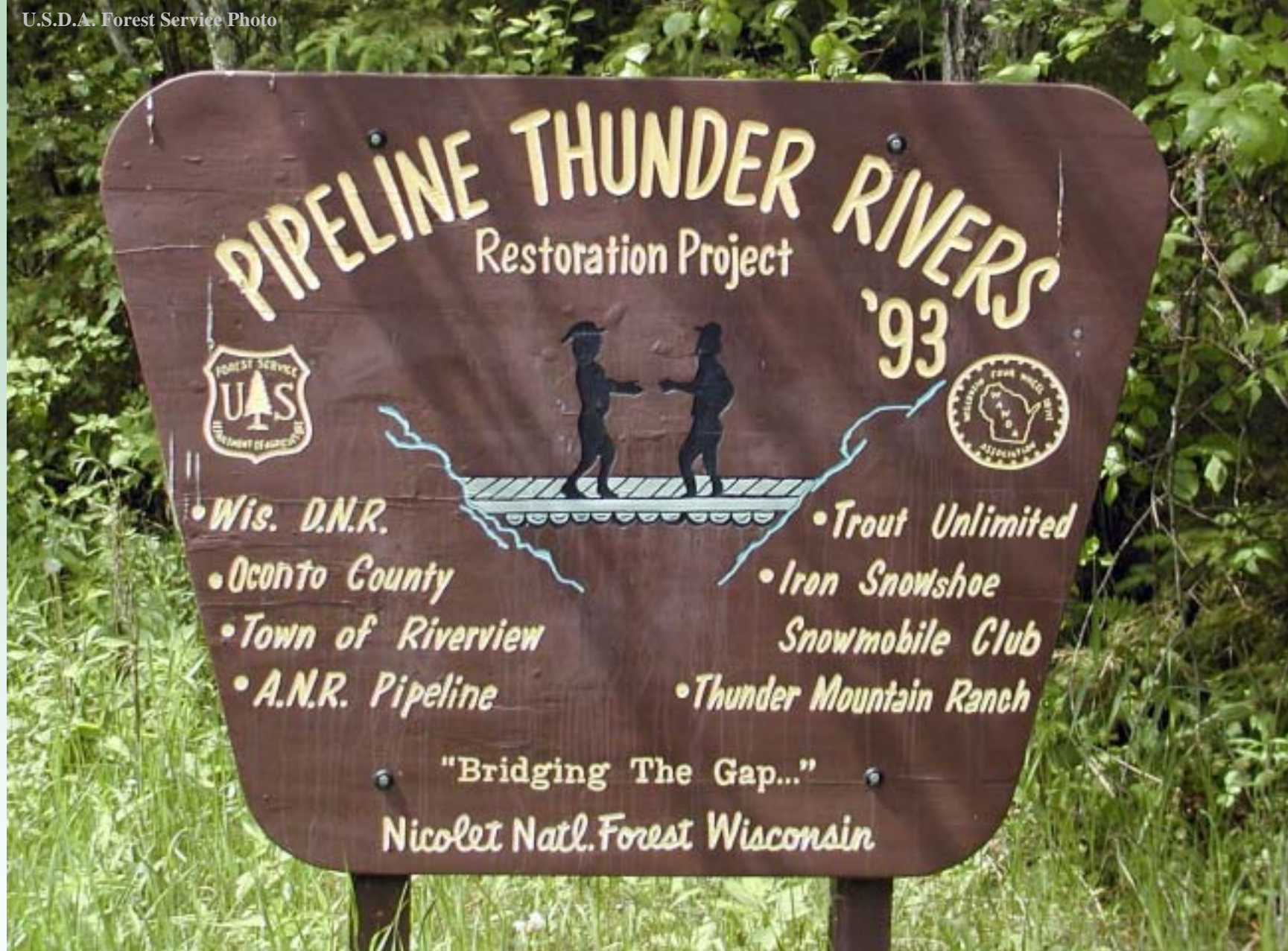




Resource Damage on Pipeline from Recreational Use







Partners in Pipeline Restoration







Employees Inspecting Resource Damage on the Pipeline, 2004







Employees Discussing Barrens Management at Thunder Mountain Barrens, November 2002







Prescribed Burn, 2003







U.S.D.A. Forest Service Photo

After a Prescribed Burn in an Oak Stand (Oak Underburn), May 2003







Employees at Lakewood Ranger Station, Autumn 1990







U.S.D.A. Forest Service Photo

Repaving Lakewood Ranger Station's Parking Lot, Summer 2003







Lakewood Ranger  
Station Native Plant  
Landscaping Project,  
2003-2004







Kaukauna High School Class Trip to Fanny Lake, 2003







The Northern Blue Butterfly and its obligate host plant, Dwarf Bilberry







Habitat Management for Dwarf Bilberry, 2002







Habitat Management for Dwarf Bilberry, 2003







## Bilberry Habitat Management - Before and After







U.S.D.A. Forest Service Photo

Placing Brush Bundles for Stream Improvement, 2003



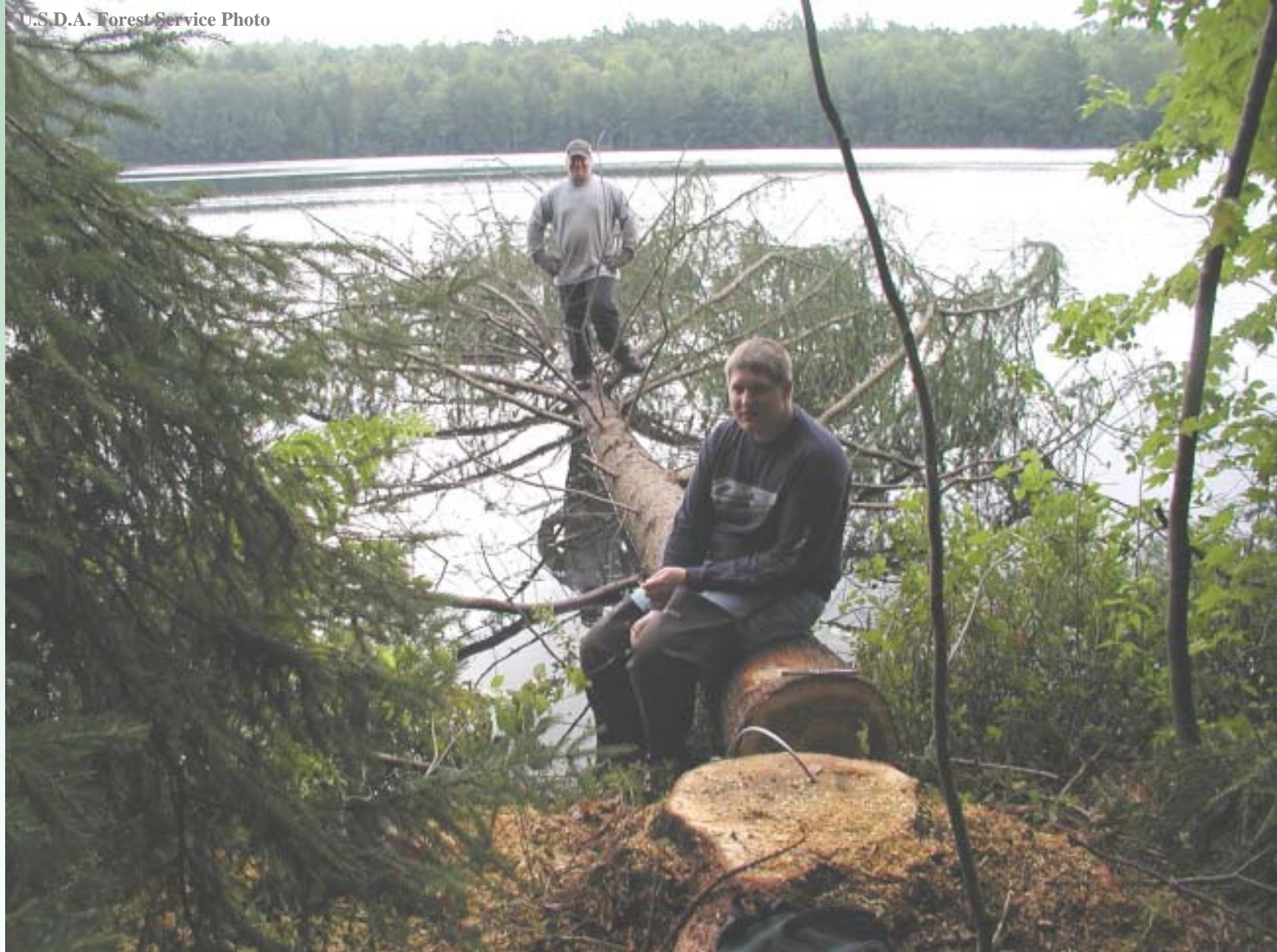




Dropping Trees for Lake Habitat Improvement







Completed Tree Drop, 2003







Hemlock Dam Removal, Summer 2004







Hemlock Dam Removal – Excavator in River







Logs from Hemlock Dam Removal







## North Branch of Oconto River Before and After Hemlock Dam Removal







Knowles Dam Removal, Summer 2004







Knowles Dam Removal – Tree in Excavator







U.S.D.A. Forest Service Photo

Logs from Knowles Dam Removal







U.S.D.A. Forest Service Photo

North Branch of Oconto River After Knowles Dam Removal, 2004







Volunteers at Nicolet National Forest Breeding Bird Survey, 2004





# Oak Wilt Quarantine Site



**NO FIREWOOD  
GATHERING  
ALLOWED UNTIL  
FURTHER NOTICE**

**If you remove diseased oak  
from this area, it can infect  
oak trees in your neighborhood.**

For more information, contact the Lakewood-  
Lapna Ranger District, 15085 State Rd. 32,  
Lakewood, WI 54138; 715-276-6333

The USDA is an equal opportunity provider and employer.

U.S.D.A. Forest Service Photo

Combating Oak Wilt, 2004







U.S.D.A. Forest Service Photo

Double-Bunked Forwarder on Oak Wilt Stewardship Contract







Excavator with Shovel Head Removing Stump Root Wads







Forwarder Unloading Logs on Oak Wilt Stewardship Contract







Plantation Lake Wind Aerator, Winter 2004-2005







U.S.D.A. Forest Service Photo

U.S.D.A. Forest Service Photo

American Marten Survey, 2005: Hair Snare Station Visited by a Fisher and Fisher Tracks





# USDA Forest Service Centennial



U.S.D.A. Forest Service Photos

in caring for  
our natural legacy

[www.fs.fed.us/centennial](http://www.fs.fed.us/centennial)

The USDA is an equal opportunity  
provider and employer.  
FS-808c

Please join us in caring for our natural legacy!

*Thank You!*

