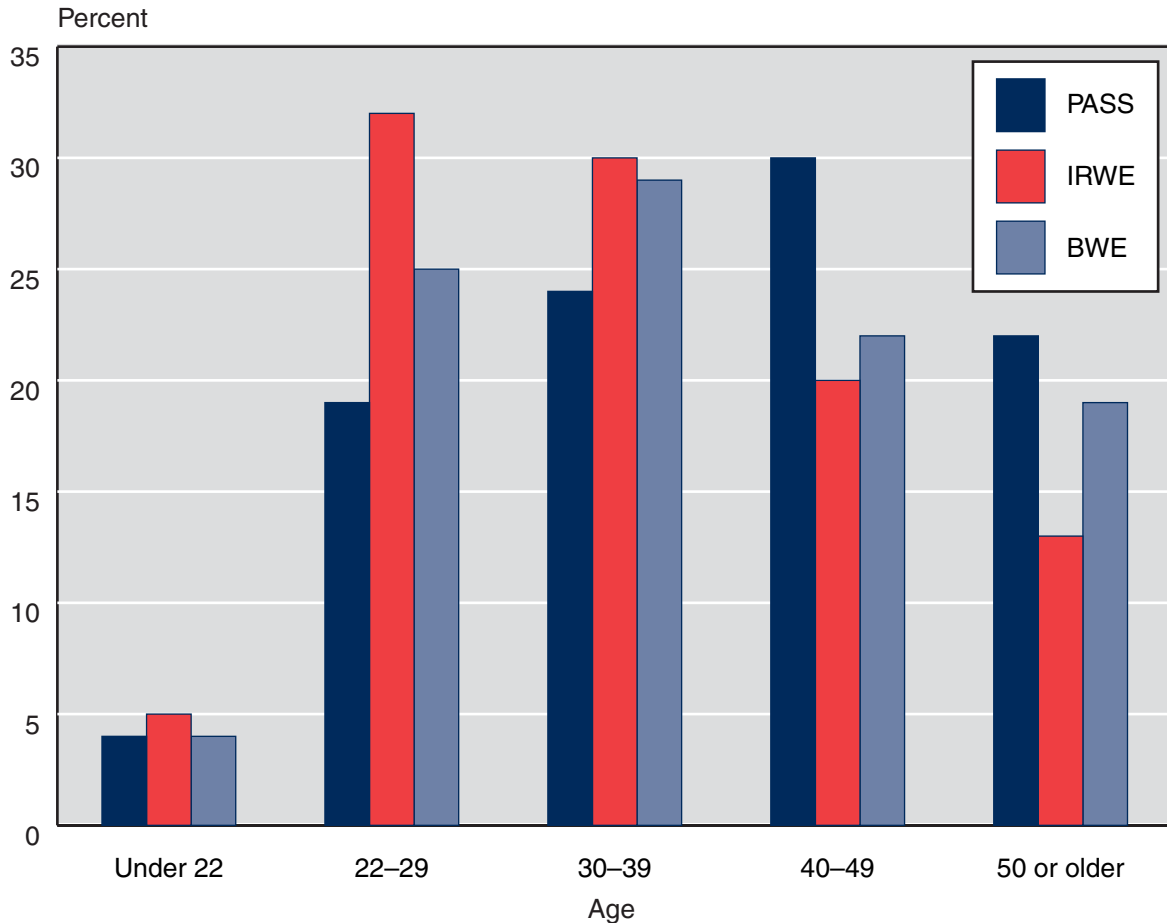


**Chart 9.**  
**Percentage distribution, by age and provision, December 2004**

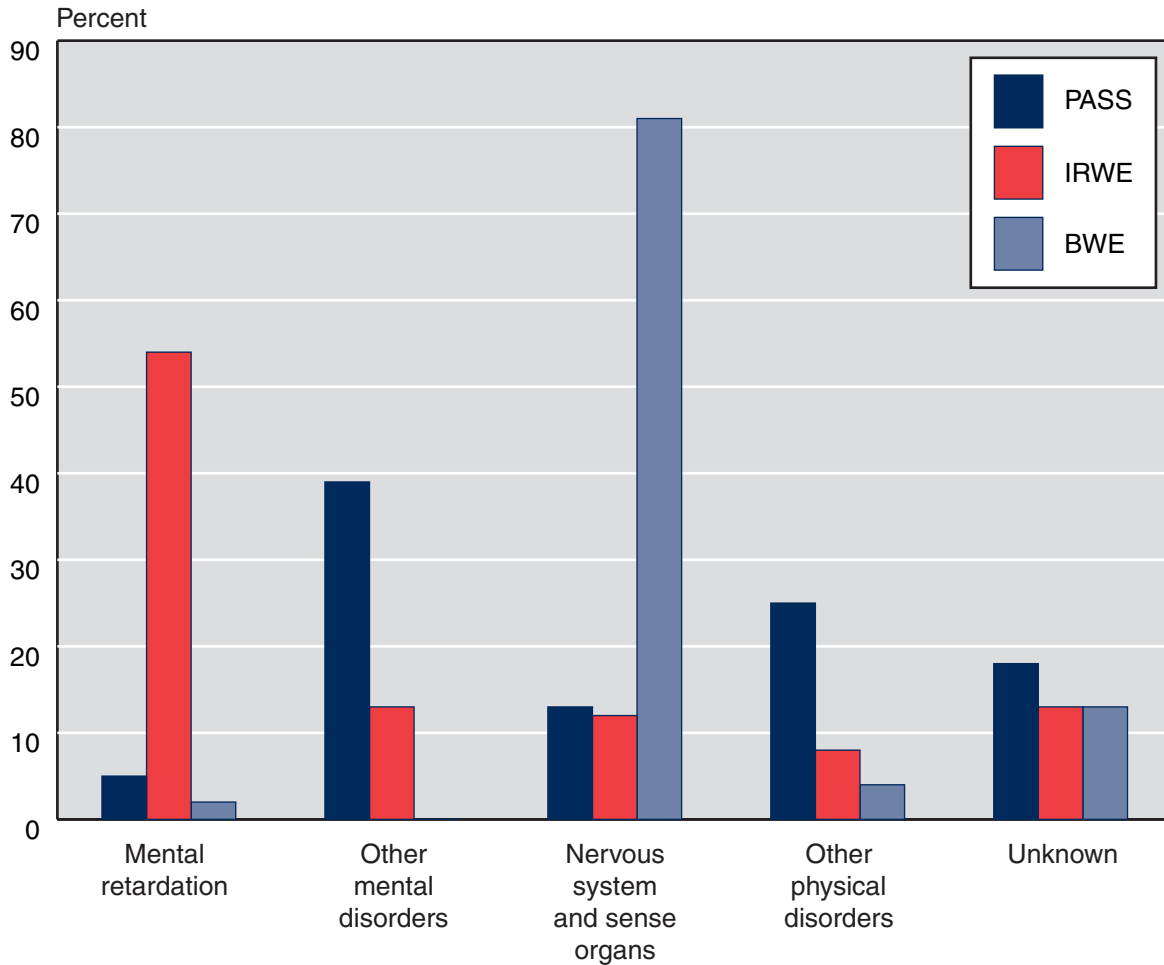
Recipients with income excluded under plans for achieving self-support (PASS), impairment-related work expenses (IRWE), or blind work expenses (BWE) were similar in age to all working recipients (Chart 3). PASS participants were somewhat older—49 percent were aged 40 or older, compared with 29 percent of those with IRWE and 36 percent of those with BWE.



SOURCE: Table 15.

**Chart 10.**  
**Percentage distribution, by diagnostic group and provision, December 2004**

The most frequently identified diagnosis varied among recipients who had income excluded under plans for achieving self-support (PASS), impairment-related work expenses (IRWE), or blind work expenses (BWE). Over half of the recipients who had some income excluded under IRWE were mentally retarded, and 39 percent of those with a PASS had other mental disorders. Four-fifths of those with BWE had a nervous system disorder.



SOURCE: Table 16.

**Table 14.**  
**Number, by state or other area and provision, December 2004**

State or area	Plans for achieving self-support (PASS) <sup>a</sup>	Impairment-related work expenses (IRWE)	Blind work expenses (BWE)
All areas	1,598	6,874	2,827
Alabama	31	164	38
Alaska	6	4	b
Arizona	12	87	24
Arkansas	25	75	24
California	463	590	409
Colorado	12	21	35
Connecticut	5	128	23
Delaware	0	36	12
District of Columbia	b	b	3
Florida	45	350	107
Georgia	30	213	55
Hawaii	9	9	12
Idaho	18	10	3
Illinois	33	229	69
Indiana	15	119	42
Iowa	20	58	69
Kansas	12	286	35
Kentucky	57	99	45
Louisiana	8	140	47
Maine	27	33	13
Maryland	9	202	42
Massachusetts	87	184	244
Michigan	51	132	103
Minnesota	33	140	51
Mississippi	10	37	43
Missouri	18	148	41
Montana	24	11	11
Nebraska	13	28	14
Nevada	4	25	13
New Hampshire	9	28	11
New Jersey	13	196	48
New Mexico	0	69	14
New York	117	521	203
North Carolina	74	337	125
North Dakota	5	8	4
Ohio	41	116	101
Oklahoma	6	81	24
Oregon	20	42	33
Pennsylvania	17	329	121
Rhode Island	9	10	13
South Carolina	19	75	33
South Dakota	11	18	4
Tennessee	15	142	47
Texas	25	330	182
Utah	3	58	15

(Continued)

**Table 14.**  
**Number, by state or other area and provision, December 2004—Continued**

State or area	Plans for achieving self-support (PASS) <sup>a</sup>	Impairment-related work expenses (IRWE)	Blind work expenses (BWE)
Vermont	21	5	3
Virginia	16	522	73
Washington	31	93	46
West Virginia	10	34	19
Wisconsin	57	296	76
Wyoming	0	4	3
Outlying area			
Northern Mariana Islands	b	b	b

SOURCE: Social Security Administration, Supplemental Security Record (Characteristic Extract Record format), 100 percent data.

a. Includes 401 persons with a PASS that excludes only resources.

b. Data are not shown to avoid disclosure of information for particular individuals.

CONTACT: Clark Pickett (410) 965-9016 or ssi.workers@ssa.gov.

**Table 15.**  
**Number, by selected characteristics and provision, December 2004**

Characteristic	Plans for achieving self-support (PASS) <sup>a</sup>	Impairment-related work expenses (IRWE)	Blind work expenses (BWE)
Total	1,598	6,874	2,827
Age			
Under 18	7	0	4
18–21	62	363	121
22–29	306	2,186	720
30–39	388	2,071	819
40–49	483	1,366	620
50–59	302	627	398
60–64	38	150	83
65 or older	12	111	62
Sex			
Male	687	3,739	1,519
Female	911	3,135	1,308
Earned income <sup>b</sup>			
Wages	412	6,801	2,742
Self-employment	82	85	110
Earnings (dollars)			
None	1,112	0	0
65 or less	27	564	202
66–99	7	276	92
100–199	28	1,035	288
200–299	46	926	211
300–399	48	775	174
400–499	38	681	173
500–599	35	614	156
600–699	45	443	134
700–799	22	310	108
800–899	42	252	134
900–999	19	167	89
1,000 or more	129	831	1,066
Unearned income <sup>b</sup>			
None	297	2,958	1,445
Social Security	1,242	3,517	1,192
Other pensions	17	47	5
Income based on need	0	0	0
Asset income	97	543	230
Other	70	213	105

SOURCE: Social Security Administration, Supplemental Security Record (Characteristic Extract Record format), 100 percent data.

a. Includes 401 persons with a PASS that excludes only resources.

b. The sum of the entries may be greater than the total because some recipients may receive more than one type of earned or unearned income or both earned and unearned income.

CONTACT: Clark Pickett (410) 965-9016 or ssi.workers@ssa.gov.

**Table 16.**  
**Percentage distribution, by diagnostic group and provision, December 2004**

Diagnostic group	All blind and disabled recipients	Plans for achieving self-support (PASS) <sup>a</sup>	Impairment-related work expenses (IRWE)	Blind work expenses (BWE)
Total				
Number	4,017,108	1,598	6,874	2,827
Percent	100.0	100.0	100.0	100.0
Congenital anomalies	0.6	1.0	2.1	1.1
Endocrine, nutritional, and metabolic diseases	3.7	2.3	0.3	0.4
Infectious and parasitic diseases	1.7	2.1	0.5	0.1
Injuries	2.6	7.1	2.2	0.1
Mental disorders				
Retardation	21.9	4.8	54.3	2.1
Schizophrenia	9.9	10.1	3.6	0
Other	25.3	28.7	9.0	0.3
Neoplasms	1.1	0.6	0.4	0.1
Diseases of the—				
Blood and blood-forming organs	0.4	0.3	0.1	0
Circulatory system	4.5	1.8	0.7	1.5
Digestive system	0.9	0.6	0.1	0
Genitourinary system	1.0	0.9	0.3	0.1
Musculoskeletal system and connective tissue	9.9	7.7	1.2	0.1
Nervous system and sense organs <sup>b</sup>	7.8	13.2	11.8	80.5
Respiratory system	2.1	0.9	0.3	0
Skin and subcutaneous tissue	0.2	0.1	0	0
Other	0.2	0.1	0.2	0.1
Unknown	6.2	17.8	12.8	13.4

SOURCE: Social Security Administration, Supplemental Security Record (Characteristic Extract Record format), 100 percent data.

NOTE: Effective with the December 2002 edition, all recipients in each recipient category are included when computing percentages for each diagnostic category. Previously, only recipients with identified diagnoses were included in this computation.

- a. Includes 401 persons with a PASS that excludes only resources.
- b. Most disabled recipients classified as blind are included in this category. A few blind recipients with a primary impairment other than diseases of the eye are coded in other categories. Also, a few recipients are classified with diseases of the eye, but their impairment does not meet the definition of blindness.

CONTACT: Clark Pickett (410) 965-9016 or ssi.workers@ssa.gov.

**Table 17.**  
**Percent distribution of persons with income excluded, by amount excluded and provision,**  
**December 2004**

Amount excluded (dollars)	Plans for achieving self-support (PASS) <sup>a</sup>	Impairment-related work expenses (IRWE)	Blind work expenses (BWE)
Total			
Number	1,197	6,874	2,827
Percent	100.0	100.0	100.0
Under 25	0.8	19.1	18.4
25–49	1.6	24.6	10.0
50–99	1.8	32.4	15.0
100–199	6.3	15.2	17.7
200–299	8.5	4.4	11.7
300–499	24.6	2.9	13.8
500–999	47.5	1.3	10.1
1,000 or more	8.9	0.3	3.4

SOURCE: Social Security Administration, Supplemental Security Record (Characteristic Extract Record format), 100 percent data.

a. Data do not include plans for achieving self-support that exclude only resources.

CONTACT: Clark Pickett (410) 965-9016 or ssi.workers@ssa.gov.