

ISPM 15

International Standards for Phytosanitary
Measures Publication No. 15:

Guideline for Regulating Wood Packaging Materials in
International Trade



Aaron Held

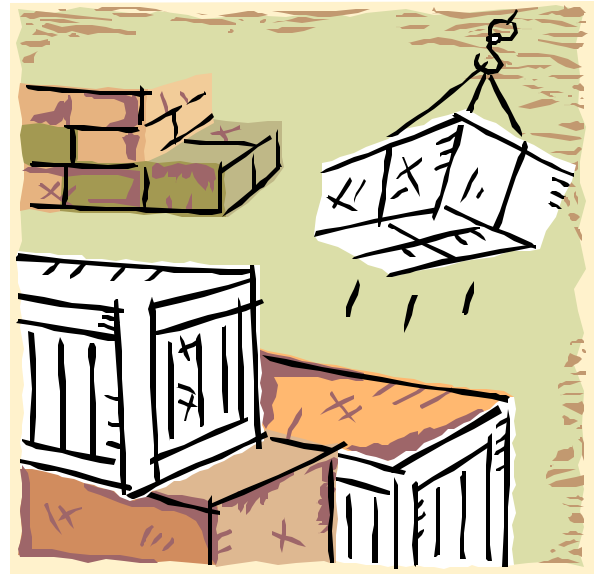
Vice Consul for
Commercial Affairs

Daniel Martinez

Director, Agricultural
Trade Office

September 6, 2005

Starting September 16, new regulations will go into effect on wood packaging materials and pallets on shipments between the U.S., Canada and Mexico.



What's it all about?



The spread of insects through wood packaging materials has caused an international pest management issue.

In June 2002, international governments working under the auspices of the United Nations met in Rome and finalized a voluntary regulation requiring treatment of wood packaging materials.

Thus was born ISPM 15, the International Standards for Phytosanitary Measures Publication No. 15: Guideline for Regulating Wood Packaging Materials in International Trade





Some 130 countries have signed ISPM 15.

The regulation has been implemented in: Argentina, Australia, Bolivia, Brazil, Chile, Costa Rica, EU Nations and Switzerland, Guatemala, India, New Zealand, Nigeria, Panama, Peru, Philippines, South Africa, South Korea, and Venezuela.

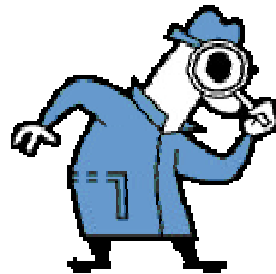
On September 16th, it will go into effect in: Mexico, Canada, Colombia, Mexico, and the United States.

Later this year it will go into effect in: China, Ecuador, Turkey

On September 16, Mexico will begin implementation of ISPM 15 through NOM (Norma Oficial Mexicana) 144.

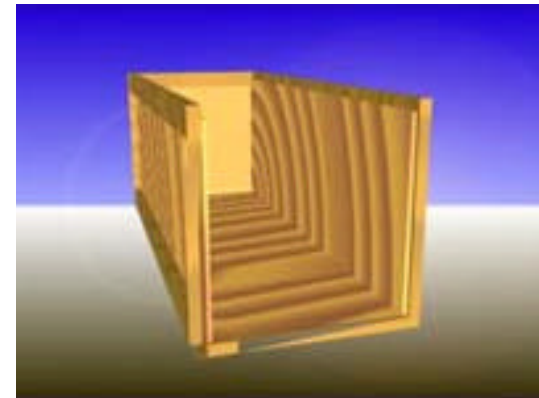
Surveillance and enforcement of NOM 144 is the responsibility of the Federal Attorney's Office of Protection to the Environment (**PROFEPA**), which is part of the Secretariat of the Environment and Natural Resources (**SEMARNAT**).

PROFEPA personnel will carry out the inspections at entry points around Mexico.



What materials are subject to ISPM 15?

All types of wood packaging materials including pallets, boxes, cases, packing blocks, crates, drums, load boards and skids...



Except...

What materials are not subject to ISPM 15?

Materials made of wood-based products such as plywood, particleboard, wine and whiskey barrels, oriented strand board or veneer that have been created using glue, heat and pressure, or a combination of these.

Veneer peeler cores, sawdust, wood wool and shavings, raw wood cut into pieces of 6mm thickness or less



Wood alternatives, such as plastic pallets

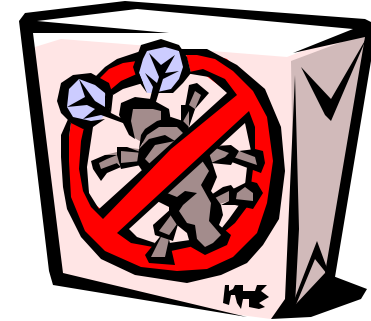


What processes must wood products go through to be certified?

Heat treatment to a minimum wood core temperature of 56°C for a minimum of 30 minutes

Fumigation with methyl bromide

Methyl Bromide Fumigation Treatment Schedule



Temperature °C/ °F	Dosage Rate (g/m ³) lbs/1000 c.f	Minimum Concentration (g/m ³) lbs/1000 c.f			
		0.5 hr	2.0 hr	4.0 hr	16.0 hr
21/ 70 or above	48/ 3.0	36/ 2.25	24/ 1.5	17/ 1.06	14/ 0.875
16/ 61 or above	56/ 3.5	42/ 2.63	28/ 1.75	20/ 1.25	17/ 1.06
11/ 52 or above	64/ 4.0	48/ 3.0	32/ 2.0	22/ 1.38	19/ 1.19

Where can wood packaging materials be treated?

Home Find Pallets & Products Resource Center Pallet User Information NWPCA Meetings & Events About NWPCA

NATIONAL WOODEN PALLET
NWPCA
& CONTAINER ASSOCIATION

Export Treatment Programs Search Go

INDEX



Export Wood Packaging Material Fumigation Program

- ◆ Program Overview
- ◆ International Solid Wood Packaging Regulations APR 2004
- ◆ Accredited Inspection Agencies
- ◆ List of Fumigators
- ◆ NWPCA Fumigation Program - How Does It Work?
- ◆ Methyl Bromide Update
- ◆ Contact: Program Manager



ALSC Wood Packaging Material Heat Treatment Program

- ◆ Program Overview
- ◆ Who is the American Lumber Standard Committee?

Heat Treating Services

Need the Download Plug-in to read our .pdf files? Click on the Adobe icon to download >>> 



329 South Patrick St., Alexandria, VA 22314-3501 703-519-6104 FAX 703-519-4720
© 2003 National Wooden Pallet and Container Association

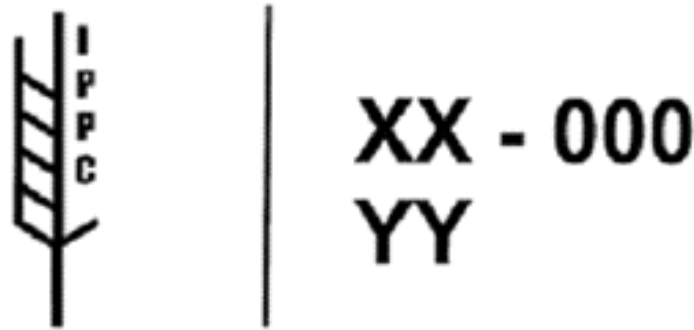
Go to:

<http://www.palletcentral.com>

Click on “Resource Center”

Click on “Export Treatment Methods”

How will Mexican authorities know that wood packaging materials comply with ISPM-15?



XX represents the ISO country code

000 represents the unique number assigned by the national plant protection organization

YY represents either HT for heat treatment or MB for methyl bromide fumigation

Paper certificates of treatment will no longer be required or accepted.

Where should the identity mark appear, and how long is it valid?

The identity mark must be:

- Visible on two opposing sides
- Legible
- Permanent – painted, branded or etched



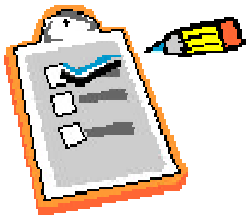
The identity mark is valid until the wood packaging material is:

- Unusable
- Re-infested
- Recycled

What is the process at the border? How will wood packaging material be checked?



Visible verification of the identity mark, checked at random through the computerized “red light green light” system, by Customs or border officials



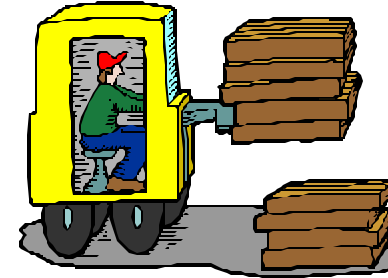
In the future, PROFEPA officials on site may inspect wood, whether labeled as treated or not, for signs of pests.

NOTE – this second inspection is still under consideration. Only PROFEPA officials would perform this inspection, and currently there are not enough PROFEPA officials to staff each border crossing.



What will happen if my packaging materials do not pass the criteria at the border?

- Take the shipment back to sender



- Treat the wood packaging material at a treatment center near the border

- Dispose of the wood packaging material at the border and:

a) Transfer the merchandise onto other wood packaging material at the border,
OR

b) Transfer the merchandise to approved wood packaging material on the domestic side of the border, and attempt once more to cross the border



Where can I get more information?

Text of ISPM 15:

www.ippc.int/servlet/BinaryDownloaderServlet/ISPM_15_English.pdf?filename=1055161712885_ISPM15_e.pdf

U.S. Foreign Commercial Service Mexico: <http://www.buyusa.gov/mexico/en/>

U.S. Customs and Border Protection: www.cbp.gov

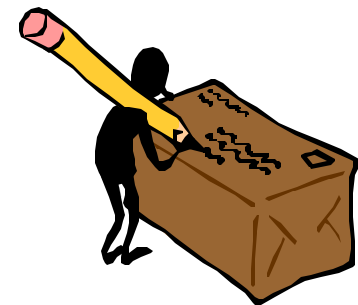
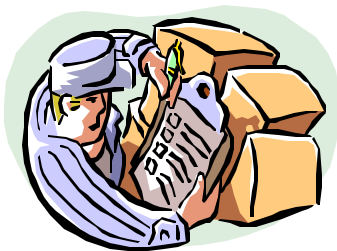
USDA Foreign Agriculture Service: www.fas.usda.gov

USDA Animal and Plant Health Inspection Service: www.aphis.usda.gov/ppq/wpm

International Plant Protection Convention (IPPC): www.ippc.int

North American Plant Protection Organization (NAPPO): www.nappo.org

Mexican Secretariat of the Environment and Natural Resources: www.semarnat.gob.mx



Who can I contact if I have more questions?

Your shipping company

Your customs broker



U.S. Agricultural Trade Office in Monterrey:
Daniel Martinez, Director, Agricultural Trade
Office Monterrey
ATOMonterrey@usda.gov

U.S. Commercial Service in Monterrey:
Aaron Held, Vice Consul for Commercial Affairs
aaron.held@mail.doc.gov