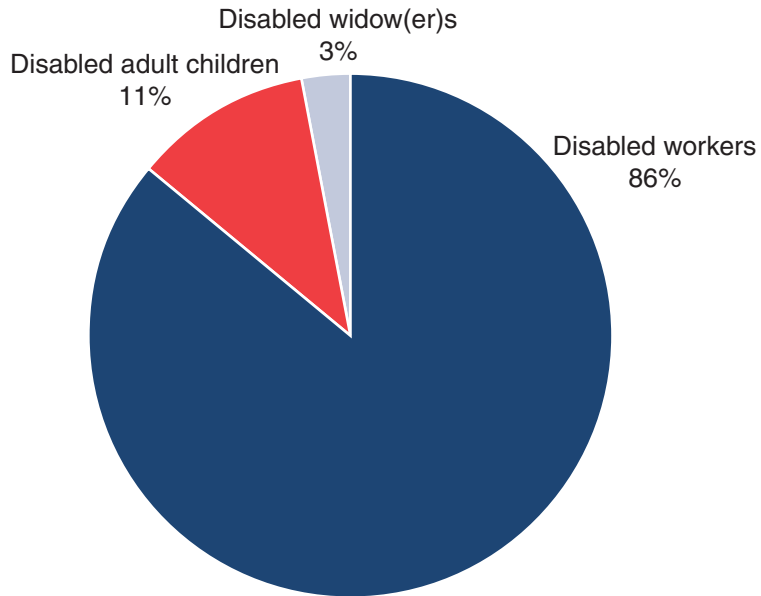


Chart 1.

All Social Security disabled beneficiaries in current-payment status, December 2004

In December 2004, nearly 7.2 million people received Social Security disability benefits as disabled workers, disabled widow(er)s, or disabled adult children. The majority (86 percent) were disabled workers, 11 percent were disabled adult children, and 3 percent were disabled widow(er)s.



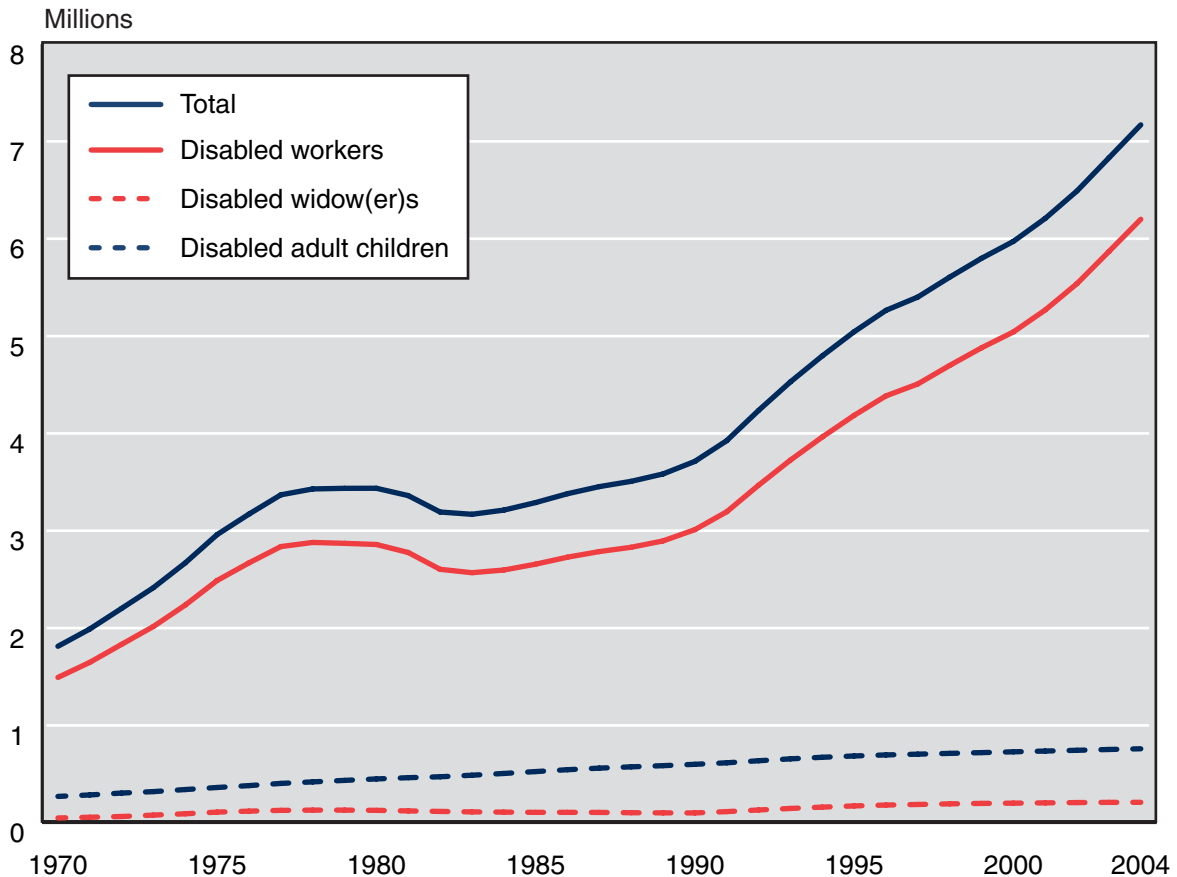
SOURCE: Table 3.

Beneficiaries in Current-Payment Status

Chart 2.

All Social Security disabled beneficiaries in current-payment status, December 1970–2004

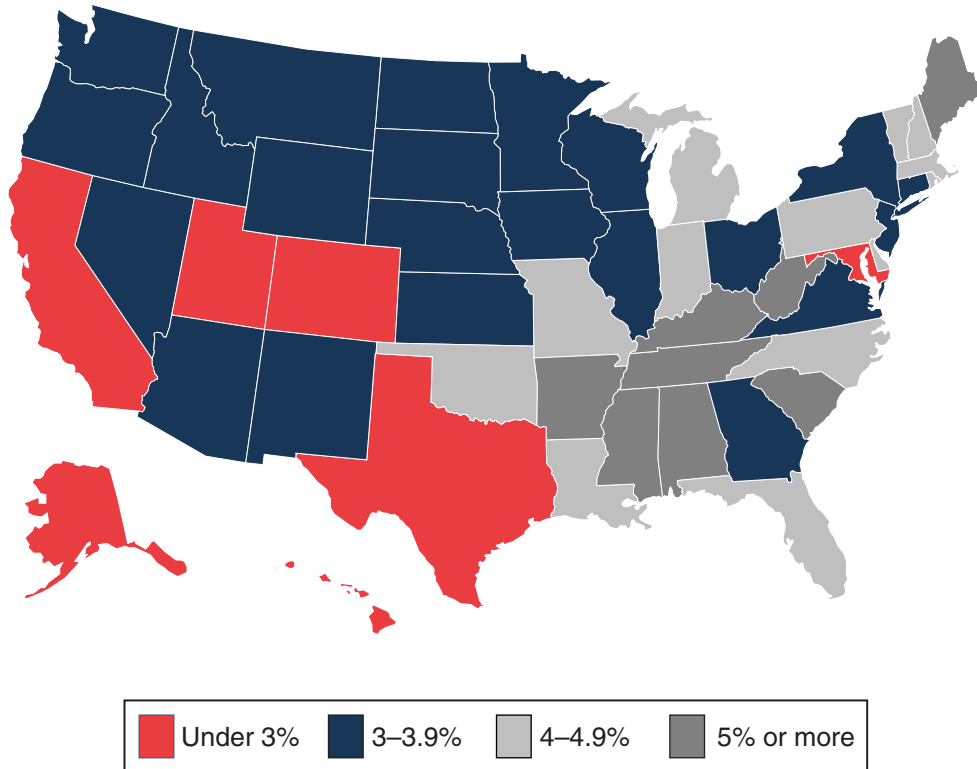
The number of disabled workers grew steadily until 1978, declined slightly until 1983, started to increase again in 1984, and began to increase more rapidly beginning in 1990. The growth in the 1980s and 1990s was the result of demographic changes, a recession, and legislative changes. The number of disabled adult children has grown slightly, and the number of disabled widow(er)s has remained fairly level. In December 2004, more than 6.1 million disabled workers, about 759,000 disabled adult children, and just over 210,000 disabled widow(er)s received disability benefits.



SOURCE: Table 3.

Chart 3.**Disabled beneficiaries aged 18–64 in current-payment status as a percentage of state population aged 18–64, December 2004**

Disabled beneficiaries aged 18 to 64 in current-payment status accounted for about 3.7 percent of the population aged 18 to 64 in the United States. In 7 states and the District of Columbia, they represented less than 3 percent of the state population. The states with the highest rates of disabled beneficiaries—5 percent or more—were Alabama, Arkansas, Kentucky, Maine, Mississippi, South Carolina, Tennessee, and West Virginia.



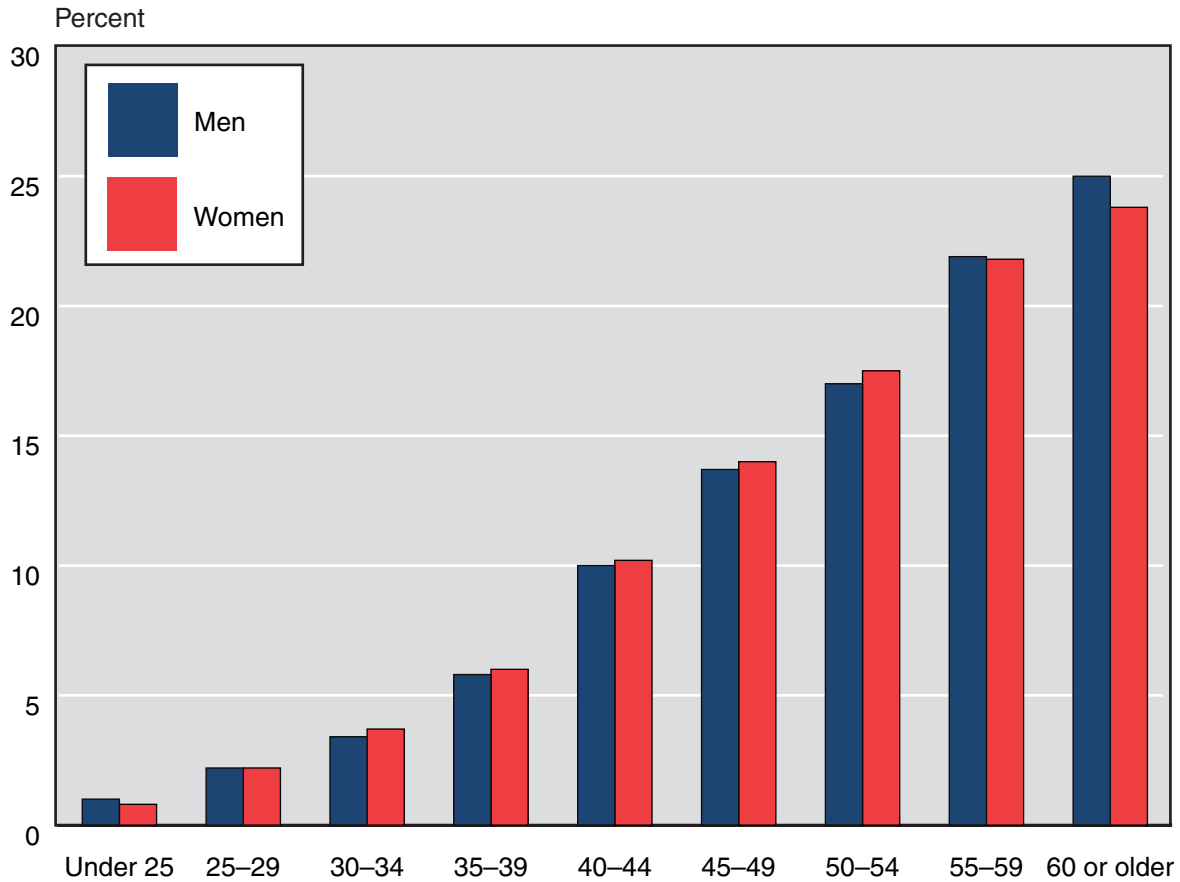
SOURCE: Table 8.

Beneficiaries in Current-Payment Status

Chart 4.

Age of disabled-worker beneficiaries in current-payment status, by sex, December 2004

The percentage of disabled-worker beneficiaries increases with age for both men and women. In December 2004, the largest percentage of disabled-worker beneficiaries was aged 60 and older. Disability benefits convert to retirement benefits when the worker reaches full retirement age, 65 to 67, depending on the year of birth.

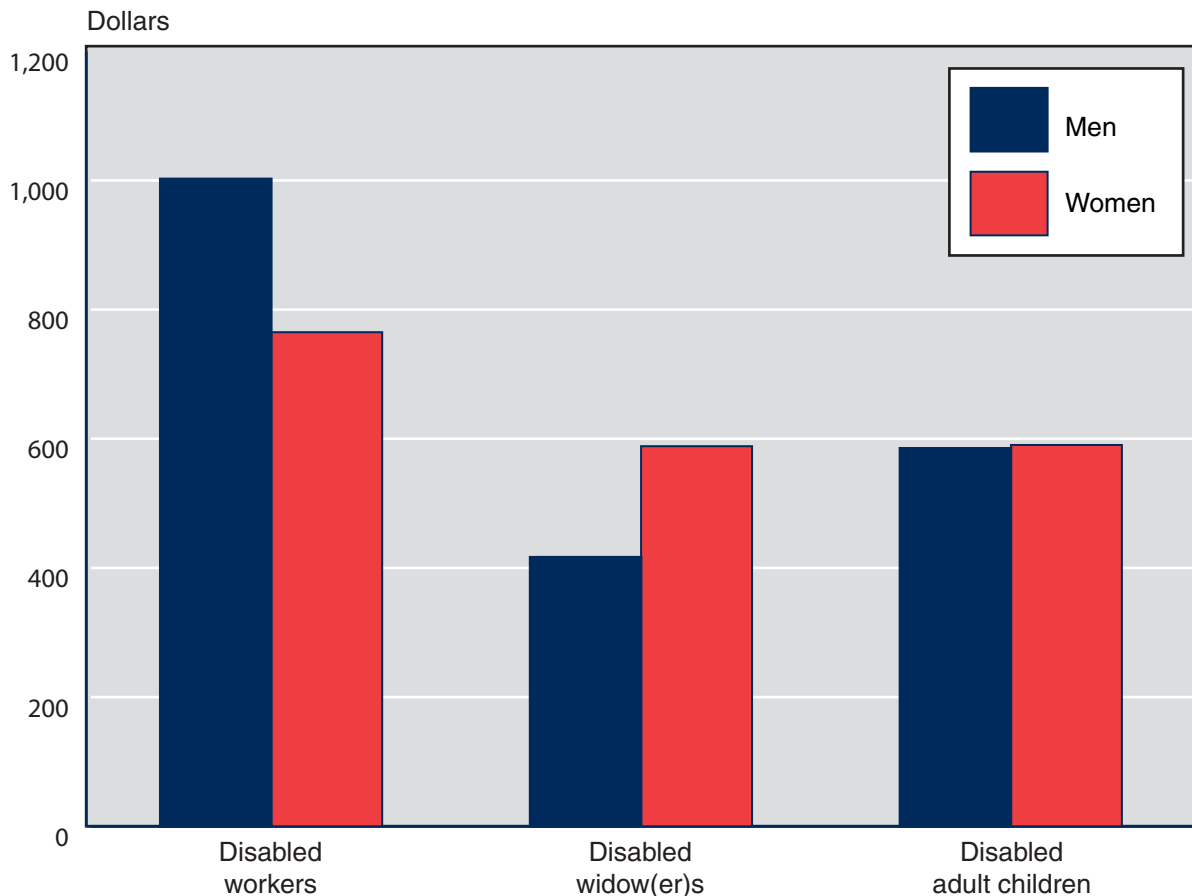


SOURCE: Table 4.

Chart 5.**Average monthly benefit of disabled beneficiaries in current-payment status, by sex, December 2004**

The average monthly benefit for disabled-worker beneficiaries is higher than that paid to disabled widow(er)s or disabled adult children. The reason for the difference is that disabled workers receive 100 percent of the primary insurance amount (PIA), compared with 71.5 percent for disabled widow(er)s and 50 percent for disabled adult children (if the worker is disabled or retired) or 75 percent (if the worker is deceased).

Because men have traditionally had higher earnings than women, their monthly benefit is higher. This is most obvious in the disabled-worker group. Benefits for disabled widow(er)s and disabled adult children are dependents' benefits, so their monthly benefit is a function of the worker's earnings. Therefore, a disabled widow's average benefit tends to be higher than that of a disabled widower because a male worker's earnings are higher than a female worker's. Benefit amounts are about the same for men and women in the disabled adult children group.



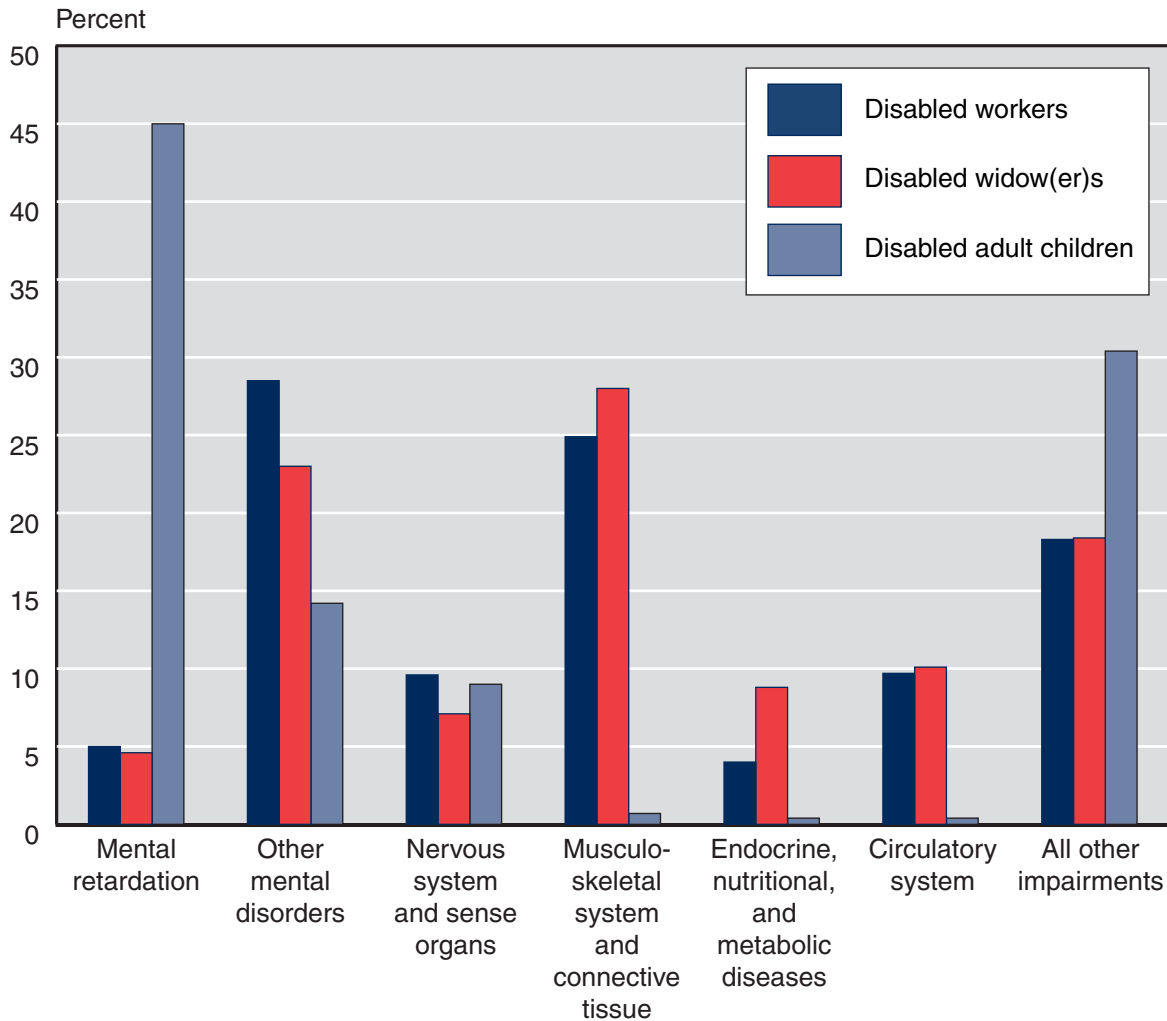
SOURCE: Table 5.

Beneficiaries in Current-Payment Status

Chart 6.

Disabled beneficiaries in current-payment status, by diagnostic group, December 2004

The impairment on which disability is based varies with the type of beneficiary. In December 2004, a mental disorder other than retardation was the primary reason disabled workers received benefits; diseases of the musculoskeletal system and connective tissue were the leading cause of disability among disabled widow(er)s; and mental retardation was the predominant reason for disability among disabled adult children.



SOURCE: Table 6.

Disabled Beneficiaries and Nondisabled Dependents

Table 1.
Number, selected years 1960–2004

Year	Total	Workers and nondisabled dependents				Widow(er)s	Adult children of—		
		Workers	Spouses	Children under age 18	Students aged 18–19		Disabled workers	Retired workers	Deceased workers
1960	788,543	455,371	76,599	152,519	2,962	53,825	47,267
1965	1,928,460	988,074	193,362	532,197	16,437	...	8,981	87,122	102,287
1970	2,970,538	1,492,948	283,447	799,111	75,194	49,281	14,295	101,341	154,921
1975	4,799,853	2,488,774	452,922	1,239,058	147,253	109,511	24,193	118,802	219,340
1980	5,223,311	2,858,680	461,878	1,184,846	140,157	127,580	32,883	140,548	276,739
1981	5,008,221	2,776,519	428,212	1,070,000	148,879	121,590	32,664	143,633	286,724
1982	4,532,014	2,603,599	365,862	894,440	79,333	116,372	30,027	144,464	297,917
1983	4,382,745	2,569,029	308,059	855,560	50,134	111,591	30,209	148,464	309,699
1984	4,406,140	2,596,516	303,982	858,243	31,875	109,151	31,165	152,667	322,541
1985	4,507,083	2,656,638	305,532	889,730	22,336	107,005	33,078	157,011	335,753
1986	4,613,249	2,728,463	300,826	911,698	20,245	106,974	34,641	161,755	348,647
1987	4,676,852	2,785,859	290,888	912,367	20,183	106,282	35,378	165,675	360,220
1988	4,709,360	2,821,070	280,780	898,980	24,370	105,810	35,520	170,940	371,890
1989	4,774,160	2,886,590	269,830	901,400	23,330	102,650	35,950	172,650	381,760
1990	4,934,370	3,011,130	264,230	929,720	23,960	101,780	36,990	174,560	392,000
1991	5,209,600	3,198,610	263,780	986,710	26,380	115,010	38,450	177,740	402,920
1992	5,633,130	3,473,330	271,510	1,090,920	25,930	131,620	41,720	181,860	416,240
1993	6,026,460	3,729,330	272,190	1,188,330	29,660	148,070	44,920	185,270	428,690
1994	6,381,470	3,966,590	270,220	1,276,740	29,910	161,650	48,650	187,630	440,080
1995	6,674,450	4,186,720	263,130	1,331,110	29,550	173,240	51,790	188,940	449,970
1996	6,906,420	4,386,040	223,300	1,381,200	32,820	182,020	53,470	190,050	457,520
1997	6,998,210	4,505,760	207,290	1,357,340	31,440	187,220	53,760	190,410	464,990
1998	7,192,370	4,697,010	190,120	1,363,910	30,780	192,400	55,690	189,930	472,530
1999	7,391,920	4,873,560	176,370	1,381,200	37,020	197,520	57,360	189,820	479,070
2000	7,550,930	5,035,840	164,850	1,381,500	35,000	200,130	58,090	191,950	483,570
2001	7,790,038	5,268,039	156,978	1,385,374	38,839	204,255	57,920	191,817	486,816
2002	8,109,332	5,539,597	151,626	1,422,296	43,916	207,365	59,460	192,087	492,985
2003	8,490,007	5,868,541	150,889	1,461,635	46,769	209,360	62,450	191,704	498,659
2004	8,854,343	6,197,385	152,995	1,486,422	47,551	210,736	64,739	191,274	503,241

SOURCES: Social Security Administration. For years before 2001, *Annual Statistical Supplement to the Social Security Bulletin*, based on the Master Beneficiary Record, various sampling rates; beginning with 2001, Disabled Beneficiaries and Dependents Master Beneficiary Record file, 100 percent data.

NOTE: ... = not applicable.

CONTACT: Kevin Kulzer (410) 965-5366 or di.asr@ssa.gov.

Disabled Beneficiaries and Nondisabled Dependents

Table 2.
Average monthly benefit, by basis of entitlement, age, and sex, December 2004

Basis of entitlement and age	Total		Male		Female	
	Number	Average monthly benefit (dollars)	Number	Average monthly benefit (dollars)	Number	Average monthly benefit (dollars)
Workers						
Total	6,197,385	894.10	3,373,226	1,002.30	2,824,159	765.00
Under 25	56,628	484.30	33,171	493.90	23,457	470.60
25-29	137,007	588.40	75,628	599.40	61,379	574.70
30-34	220,035	666.90	116,288	682.30	103,747	649.70
35-39	366,275	731.10	196,696	750.40	169,579	708.60
40-44	622,504	787.30	335,816	824.30	286,688	743.90
45-49	857,014	851.30	462,455	917.20	394,559	774.00
50-54	1,068,229	916.70	573,424	1,018.40	494,805	798.90
55-59	1,353,782	972.70	737,303	1,117.10	616,479	800.00
60-64	1,434,690	992.60	796,427	1,168.70	638,263	772.80
65-FRA	81,221	973.20	46,018	1,147.70	35,203	745.00
Spouses of disabled workers						
Total	152,995	231.50	4,515	186.10	148,480	232.90
Entitlement based on care						
of children	92,277	188.00	1,904	149.20	90,373	188.80
Under 30	5,978	125.10	67	121.30	5,911	125.10
30-34	10,939	133.10	134	105.80	10,805	133.50
35-39	18,050	152.80	288	123.70	17,762	153.30
40-44	21,728	186.00	425	135.00	21,303	187.00
45-49	17,672	213.50	436	153.90	17,236	215.00
50-54	10,571	240.80	290	178.60	10,281	242.60
55-FRA	7,339	276.00	264	188.60	7,075	279.30
Entitlement based on age						
62-64	34,716	288.50	644	175.00	34,072	290.60
65 or older	26,002	309.80	1,967	225.40	24,035	316.70
Children of disabled workers						
Total	1,598,712	264.80	838,597	266.20	760,115	263.10
Under age 18						
Under 5	117,476	212.30	59,922	212.10	57,554	212.40
5-9	310,183	221.20	158,338	220.60	151,845	221.90
10-14	582,573	247.10	301,714	246.80	280,859	247.30
15-17	476,190	302.40	253,427	303.00	222,763	301.70
Students aged 18-19	47,551	367.30	27,989	370.90	19,562	362.00
Disabled aged 18 or older	64,739	376.10	37,207	375.90	27,532	376.40
Widow(er)s						
Total	210,736	582.70	7,016	416.60	203,720	588.50
50-54	27,181	592.60	1,239	425.80	25,942	600.60
55-59	77,839	586.70	2,919	421.80	74,920	593.10
60-FRA	105,716	577.30	2,858	407.30	102,858	582.00

(Continued)

Disabled Beneficiaries and Nondisabled Dependents

Table 2.
Average monthly benefit, by basis of entitlement, age, and sex, December 2004—Continued

Basis of entitlement and age	Total		Male		Female	
	Number	Average monthly benefit (dollars)	Number	Average monthly benefit (dollars)	Number	Average monthly benefit (dollars)
Adult children						
Total	759,254	587.60	414,697	585.20	344,557	590.40
Children of—						
Disabled workers	64,739	376.10	37,207	375.90	27,532	376.40
Retired workers	191,274	500.50	106,203	497.70	85,071	504.10
Deceased workers	503,241	647.90	271,287	648.20	231,954	647.50
Under 25	72,297	498.90	42,221	498.40	30,076	499.50
25–29	63,001	537.80	35,859	538.90	27,142	536.20
30–34	72,291	573.00	40,687	569.90	31,604	577.00
35–39	89,464	591.50	50,722	589.90	38,742	593.60
40–44	111,566	608.60	63,062	606.40	48,504	611.50
45–49	103,285	619.50	57,627	617.00	45,658	622.60
50–54	79,630	628.50	42,998	627.10	36,632	630.20
55–59	59,213	625.50	30,875	621.00	28,338	630.40
60–64	41,256	621.20	20,828	615.60	20,428	626.90
65 or older	67,251	553.80	29,818	552.10	37,433	555.00

SOURCE: Social Security Administration, Disabled Beneficiaries and Dependents Master Beneficiary Record file, 100 percent data.

NOTE: FRA = full retirement age.

CONTACT: Kevin Kulzer (410) 965-5366 or di.asr@ssa.gov.

All Disabled Beneficiaries

Table 3.
Number, average, and total monthly benefits, December 1960–2004

Year	Number				Average monthly benefit (dollars)			Total monthly benefits (thousands of dollars)		
	Total	Workers	Widow(er)s	Adult children	Workers	Widow(er)s	Adult children	Workers	Widow(er)s	Adult children
1960	559,425	455,371	...	104,054	89.31	...	44.15	40,669	...	4,594
1961	742,296	618,075	...	124,221	89.59	...	45.28	55,373	...	5,625
1962	888,131	740,867	...	147,264	89.99	...	45.67	66,671	...	6,726
1963	993,656	827,014	...	166,642	90.59	...	46.45	74,919	...	7,741
1964	1,077,695	894,173	...	183,522	91.12	...	47.35	81,477	...	8,690
1965	1,186,464	988,074	...	198,390	97.76	...	51.77	96,594	...	10,271
1966	1,310,911	1,097,190	...	213,721	98.09	...	52.42	107,623	...	11,203
1967	1,422,778	1,193,120	...	229,658	98.43	...	53.41	117,439	...	12,266
1968	1,560,517	1,295,300	21,563	243,654	111.86	72.25	61.83	144,892	1,558	15,065
1969	1,690,982	1,394,291	39,469	257,222	112.74	71.02	62.79	157,192	2,803	16,151
1970	1,812,786	1,492,948	49,281	270,557	131.26	82.00	73.21	195,964	4,041	19,807
1971	1,990,098	1,647,684	56,743	285,671	146.52	90.11	81.37	241,419	5,113	23,245
1972	2,202,090	1,832,916	64,167	305,007	179.32	109.54	98.81	328,678	7,029	30,138
1973	2,415,383	2,016,626	78,769	319,988	183.00	111.14	100.14	369,043	8,754	32,044
1974	2,670,092	2,236,882	92,128	341,082	205.70	125.87	112.45	460,127	11,596	38,355
1975	2,960,620	2,488,774	109,511	362,335	225.90	137.70	122.80	562,214	15,080	44,495
1976	3,171,198	2,670,208	119,427	381,563	245.17	147.01	132.32	654,655	17,557	50,488
1977	3,368,954	2,837,432	127,276	404,246	265.30	156.11	142.12	752,771	19,869	57,451
1978	3,429,421	2,879,774	129,751	419,896	288.30	165.46	153.66	830,239	21,469	64,521
1979	3,435,761	2,870,590	129,833	435,338	322.00	180.52	171.55	924,330	23,437	74,682
1980	3,436,429	2,858,680	127,580	450,169	370.70	205.02	198.95	1,059,713	26,156	89,561
1981	3,361,130	2,776,519	121,590	463,021	413.20	226.58	224.51	1,147,258	27,550	103,953
1982	3,192,379	2,603,599	116,372	472,408	440.60	242.11	245.07	1,147,146	28,175	115,773
1983	3,168,992	2,569,029	111,591	488,372	456.20	250.33	257.78	1,171,991	27,935	125,893
1984	3,212,040	2,596,516	109,151	506,373	470.70	306.24	270.28	1,222,180	33,426	136,862
1985	3,289,485	2,656,638	107,005	525,842	483.80	315.26	281.92	1,285,281	33,734	148,245
1986	3,380,480	2,728,463	106,974	545,043	487.90	319.74	288.79	1,331,217	34,204	157,403
1987	3,453,414	2,785,859	106,282	561,273	508.20	333.89	304.32	1,415,774	35,486	170,807
1988	3,507,707	2,830,284	103,123	574,300	529.50	348.05	320.21	1,498,635	35,892	183,897
1989	3,583,451	2,895,364	101,630	586,457	556.00	366.72	339.47	1,609,822	37,270	199,085
1990	3,712,763	3,011,294	100,989	600,480	587.20	388.93	361.71	1,768,232	39,278	217,200
1991	3,925,472	3,194,938	114,489	616,045	609.40	406.96	378.86	1,946,995	46,592	233,395
1992	4,236,080	3,467,783	131,324	636,973	626.10	422.65	393.61	2,171,179	55,504	250,719
1993	4,529,466	3,725,966	147,015	656,485	641.70	434.20	407.20	2,390,952	63,834	267,321
1994	4,796,313	3,962,954	160,676	672,683	661.40	446.30	422.40	2,621,098	71,710	284,141

(Continued)

Table 3.
Number, average, and total monthly benefits, December 1960–2004—Continued

Year	Number				Average monthly benefit (dollars)			Total monthly benefits (thousands of dollars)		
	Total	Workers	Widow(er)s	Adult children	Workers	Widow(er)s	Adult children	Workers	Widow(er)s	Adult children
1995	5,044,388	4,185,263	173,024	686,101	681.60	458.30	437.30	2,853,512	79,297	300,032
1996	5,264,321	4,385,623	181,911	696,787	703.90	471.00	454.30	3,087,040	85,680	316,550
1997	5,400,781	4,508,134	187,938	704,709	721.60	480.40	468.60	3,253,069	90,285	330,227
1998	5,605,272	4,698,319	194,181	712,772	733.10	487.30	479.40	3,444,338	94,624	341,703
1999	5,798,776	4,879,455	198,795	720,526	754.10	499.90	495.60	3,679,597	99,378	357,093
2000	5,972,468	5,042,333	201,446	728,689	786.40	519.70	518.30	3,965,291	104,681	377,650
2001	6,208,847	5,268,039	204,255	736,553	814.40	536.70	537.60	4,290,449	109,622	395,956
2002	6,491,494	5,539,597	207,365	744,532	834.30	548.10	550.40	4,621,852	113,653	409,813
2003	6,830,714	5,868,541	209,360	752,813	861.60	563.80	567.00	5,054,332	118,010	426,780
2004	7,167,375	6,197,385	210,736	759,254	894.10	582.70	587.60	5,540,703	122,795	446,096

SOURCES: Social Security Administration. For years before 2000, *Annual Statistical Supplement* to the *Social Security Bulletin*, based on the Master Beneficiary Record, various sampling rates; for 2000, Social Security Disability Insurance Beneficiaries, 100 percent data; beginning with 2001, Disabled Beneficiaries and Dependents Master Beneficiary Record file, 100 percent data.

NOTE: . . . = not applicable.

CONTACT: Kevin Kulzer (410) 965-5366 or di.asr@ssa.gov.

All Disabled Beneficiaries

Table 4.
Number and average monthly benefit, by sex and age, December 2004

Age	Total		Workers		Widow(er)s		Adult children	
	Number	Average monthly benefit (dollars)	Number	Average monthly benefit (dollars)	Number	Average monthly benefit (dollars)	Number	Average monthly benefit (dollars)
All disabled beneficiaries								
Total	7,167,375	852.50	6,197,385	894.10	210,736	582.70	759,254	587.60
Under 25	128,925	492.50	56,628	484.30	72,297	498.90
25-29	200,008	572.40	137,007	588.40	63,001	537.80
30-34	292,326	643.70	220,035	666.90	72,291	573.00
35-39	455,739	703.70	366,275	731.10	89,464	591.50
40-44	734,070	760.10	622,504	787.30	111,566	608.60
45-49	960,299	826.30	857,014	851.30	103,285	619.50
50-54	1,175,040	889.70	1,068,229	916.70	27,181	592.60	79,630	628.50
55-59	1,490,834	938.70	1,353,782	972.70	77,839	586.70	59,213	625.50
60-64	1,581,662	955.10	1,434,690	992.60	105,716	577.30	41,256	621.20
65-FRA ^a	148,472	783.20	81,221	973.20	67,251	553.80
Men								
Subtotal	3,794,939	955.60	3,373,226	1,002.30	7,016	416.60	414,697	585.20
Under 25	75,392	496.40	33,171	493.90	42,221	498.40
25-29	111,487	580.00	75,628	599.40	35,859	538.90
30-34	156,975	653.10	116,288	682.30	40,687	569.90
35-39	247,418	717.50	196,696	750.40	50,722	589.90
40-44	398,878	789.90	335,816	824.30	63,062	606.40
45-49	520,082	884.00	462,455	917.20	57,627	617.00
50-54	617,661	990.00	573,424	1,018.40	1,239	425.80	42,998	627.10
55-59	771,097	1,094.60	737,303	1,117.10	2,919	421.80	30,875	621.00
60-64	820,113	1,152.00	796,427	1,168.70	2,858	407.30	20,828	615.60
65-FRA ^a	75,836	913.50	46,018	1,147.70	29,818	552.10
Women								
Subtotal	3,372,436	736.50	2,824,159	765.00	203,720	588.50	344,557	590.40
Under 25	53,533	486.90	23,457	470.60	30,076	499.50
25-29	88,521	562.90	61,379	574.70	27,142	536.20
30-34	135,351	632.70	103,747	649.70	31,604	577.00
35-39	208,321	687.20	169,579	708.60	38,742	593.60
40-44	335,192	724.80	286,688	743.90	48,504	611.50
45-49	440,217	758.30	394,559	774.00	45,658	622.60
50-54	557,379	778.60	494,805	798.90	25,942	600.60	36,632	630.20
55-59	719,737	771.80	616,479	800.00	74,920	593.10	28,338	630.40
60-64	761,549	743.10	638,263	772.80	102,858	582.00	20,428	626.90
65-FRA ^a	72,636	647.10	35,203	745.00	37,433	555.00

SOURCE: Social Security Administration, Disabled Beneficiaries and Dependents Master Beneficiary Record file, 100 percent data.

NOTE: FRA = full retirement age; ... = not applicable.

a. FRA applies only to workers and widow(er)s. There is no age limit for adult children.

CONTACT: Kevin Kulzer (410) 965-5366 or di.asr@ssa.gov.

Table 5.
Distribution, by sex and monthly benefit, December 2004

Sex and monthly benefit (dollars)	Total		Workers		Widow(er)s		Adult children	
	Number	Percent	Number	Percent	Number	Percent	Number	Percent
All disabled beneficiaries	7,167,375	100.0	6,197,385	100.0	210,736	100.0	759,254	100.0
Less than 300.00	342,992	4.8	213,885	3.5	38,940	18.5	90,167	11.9
300.00–399.90	353,490	4.9	229,533	3.7	23,617	11.2	100,340	13.2
400.00–499.90	460,794	6.4	326,476	5.3	27,788	13.2	106,530	14.0
500.00–599.90	814,090	11.4	683,138	11.0	26,156	12.4	104,796	13.8
600.00–699.90	904,817	12.6	768,234	12.4	23,202	11.0	113,381	14.9
700.00–799.90	809,109	11.3	699,230	11.3	19,733	9.4	90,146	11.9
800.00–899.90	684,474	9.5	606,026	9.8	15,866	7.5	62,582	8.2
900.00–999.90	573,231	8.0	513,516	8.3	14,199	6.7	45,516	6.0
1,000.00–1,099.90	471,793	6.6	432,127	7.0	10,731	5.1	28,935	3.8
1,100.00–1,199.90	374,334	5.2	358,063	5.8	6,435	3.1	9,836	1.3
1,200.00–1,299.90	308,057	4.3	301,298	4.9	2,856	1.4	3,903	0.5
1,300.00–1,399.90	293,455	4.1	290,899	4.7	1,037	0.5	1,519	0.2
1,400.00–1,499.90	254,757	3.6	253,887	4.1	116	0.1	754	0.1
1,500.00–1,599.90	208,294	2.9	207,957	3.4	22	a	315	a
1,600.00–1,699.90	156,151	2.2	155,946	2.5	10	a	195	a
1,700.00–1,799.90	88,107	1.2	87,967	1.4	11	a	129	a
1,800.00 or more	69,430	1.0	69,203	1.1	17	a	210	a
Average benefit (dollars)	852.50		894.10		582.70		587.60	
Men	3,794,939	100.0	3,373,226	100.0	7,016	100.0	414,697	100.0
Less than 300.00	126,656	3.3	72,343	2.1	2,644	37.7	51,669	12.5
300.00–399.90	135,977	3.6	80,754	2.4	915	13.0	54,308	13.1
400.00–499.90	179,331	4.7	120,044	3.6	1,107	15.8	58,180	14.0
500.00–599.90	317,567	8.4	259,822	7.7	778	11.1	56,967	13.7
600.00–699.90	385,200	10.2	324,065	9.6	545	7.8	60,590	14.6
700.00–799.90	379,969	10.0	330,829	9.8	378	5.4	48,762	11.8
800.00–899.90	349,526	9.2	314,978	9.3	247	3.5	34,301	8.3
900.00–999.90	316,348	8.3	291,395	8.6	151	2.2	24,802	6.0
1,000.00–1,099.90	283,703	7.5	267,677	7.9	132	1.9	15,894	3.8
1,100.00–1,199.90	244,875	6.5	239,462	7.1	72	1.0	5,341	1.3
1,200.00–1,299.90	217,291	5.7	215,073	6.4	37	0.5	2,181	0.5
1,300.00–1,399.90	220,727	5.8	219,895	6.5	b	b	b	b
1,400.00–1,499.90	201,140	5.3	200,715	6.0	b	b	b	b
1,500.00–1,599.90	169,244	4.5	169,074	5.0	0	0	170	a
1,600.00–1,699.90	130,208	3.4	130,094	3.9	b	b	b	b
1,700.00–1,799.90	76,186	2.0	76,117	2.3	0	0	69	a
1,800.00 or more	60,991	1.6	60,889	1.8	0	0	102	a
Average benefit (dollars)	955.60		1,002.30		416.60		585.20	

(Continued)

All Disabled Beneficiaries

Table 5.
Distribution, by sex and monthly benefit, December 2004—Continued

Sex and monthly benefit (dollars)	Total		Workers		Widow(er)s		Adult children	
	Number	Percent	Number	Percent	Number	Percent	Number	Percent
Women	3,372,436	100.0	2,824,159	100.0	203,720	100.0	344,557	100.0
Less than 300.00	216,336	6.4	141,542	5.0	36,296	17.8	38,498	11.2
300.00–399.90	217,513	6.4	148,779	5.3	22,702	11.1	46,032	13.4
400.00–499.90	281,463	8.3	206,432	7.3	26,681	13.1	48,350	14.0
500.00–599.90	496,523	14.7	423,316	15.0	25,378	12.5	47,829	13.9
600.00–699.90	519,617	15.4	444,169	15.7	22,657	11.1	52,791	15.3
700.00–799.90	429,140	12.7	368,401	13.0	19,355	9.5	41,384	12.0
800.00–899.90	334,948	9.9	291,048	10.3	15,619	7.7	28,281	8.2
900.00–999.90	256,883	7.6	222,121	7.9	14,048	6.9	20,714	6.0
1,000.00–1,099.90	188,090	5.6	164,450	5.8	10,599	5.2	13,041	3.8
1,100.00–1,199.90	129,459	3.8	118,601	4.2	6,363	3.1	4,495	1.3
1,200.00–1,299.90	90,766	2.7	86,225	3.1	2,819	1.4	1,722	0.5
1,300.00–1,399.90	72,728	2.2	71,004	2.5	b	b	b	b
1,400.00–1,499.90	53,617	1.6	53,172	1.9	b	b	b	b
1,500.00–1,599.90	39,050	1.2	38,883	1.4	22	a	145	a
1,600.00–1,699.90	25,943	0.8	25,852	0.9	b	b	b	b
1,700.00–1,799.90	11,921	0.4	11,850	0.4	11	a	60	a
1,800.00 or more	8,439	0.3	8,314	0.3	17	a	108	a
Average benefit (dollars)	736.50		765.00		588.50		590.40	

SOURCE: Social Security Administration, Disabled Beneficiaries and Dependents Master Beneficiary Record file, 100 percent data.

a. Less than 0.05 percent.

b. Data not shown to avoid disclosure of information for particular individuals.

CONTACT: Kevin Kulzer (410) 965-5366 or di.asr@ssa.gov.

Table 6.
Distribution, by sex and diagnostic group, December 2004

Diagnostic group	Total		Workers		Widow(er)s		Adult children	
	Number	Percent	Number	Percent	Number	Percent	Number	Percent
<i>All disabled beneficiaries</i>								
Total	7,167,375	100.0	6,197,385	100.0	210,736	100.0	759,254	100.0
Congenital anomalies	18,634	0.3	10,392	0.2	261	0.1	7,981	1.1
Endocrine, nutritional, and metabolic diseases	268,859	3.8	247,559	4.0	18,477	8.8	2,823	0.4
Infectious and parasitic diseases	114,942	1.6	110,178	1.8	1,777	0.8	2,987	0.4
Injuries	286,513	4.0	271,626	4.4	5,363	2.5	9,524	1.3
Mental disorders								
Retardation	661,285	9.2	310,240	5.0	9,623	4.6	341,422	45.0
Other	1,922,097	26.8	1,765,627	28.5	48,503	23.0	107,967	14.2
Neoplasms	178,889	2.5	172,844	2.8	4,269	2.0	1,776	0.2
Diseases of the—								
Blood and blood-forming organs	17,879	0.2	15,596	0.3	360	0.2	1,923	0.3
Circulatory system	624,774	8.7	600,144	9.7	21,262	10.1	3,368	0.4
Digestive system	97,551	1.4	94,566	1.5	2,398	1.1	587	0.1
Genitourinary system	107,088	1.5	103,427	1.7	1,866	0.9	1,795	0.2
Musculoskeletal system and connective tissue	1,604,595	22.4	1,540,566	24.9	59,012	28.0	5,017	0.7
Nervous system and sense organs	679,618	9.5	596,369	9.6	15,064	7.1	68,185	9.0
Respiratory system	206,508	2.9	194,592	3.1	10,953	5.2	963	0.1
Skin and subcutaneous tissue	15,702	0.2	14,963	0.2	484	0.2	255	a
Other	13,558	0.2	12,038	0.2	262	0.1	1,258	0.2
Unknown	348,883	4.9	136,658	2.2	10,802	5.1	201,423	26.5
<i>Men</i>								
Subtotal	3,794,939	100.0	3,373,226	100.0	7,016	100.0	414,697	100.0
Congenital anomalies	9,566	0.3	5,390	0.2	10	0.1	4,166	1.0
Endocrine, nutritional, and metabolic diseases	107,616	2.8	105,959	3.1	332	4.7	1,325	0.3
Infectious and parasitic diseases	83,610	2.2	81,926	2.4	94	1.3	1,590	0.4
Injuries	197,539	5.2	190,556	5.6	337	4.8	6,646	1.6
Mental disorders								
Retardation	386,238	10.2	201,209	6.0	325	4.6	184,704	44.5
Other	973,548	25.7	903,702	26.8	1,380	19.7	68,466	16.5
Neoplasms	84,619	2.2	83,461	2.5	140	2.0	1,018	0.2
Diseases of the—								
Blood and blood-forming organs	8,103	0.2	7,115	0.2	18	0.3	970	0.2
Circulatory system	407,046	10.7	404,117	12.0	1,115	15.9	1,814	0.4
Digestive system	51,919	1.4	51,490	1.5	123	1.8	306	0.1
Genitourinary system	63,499	1.7	62,439	1.9	129	1.8	931	0.2
Musculoskeletal system and connective tissue	800,300	21.1	796,382	23.6	1,763	25.1	2,155	0.5
Nervous system and sense organs	336,720	8.9	299,870	8.9	474	6.8	36,376	8.8
Respiratory system	98,482	2.6	97,711	2.9	339	4.8	432	0.1
Skin and subcutaneous tissue	6,243	0.2	6,126	0.2	14	0.2	103	a
Other	6,518	0.2	5,846	0.2	7	0.1	665	0.2
Unknown	173,373	4.6	69,927	2.1	416	5.9	103,030	24.8

(Continued)

All Disabled Beneficiaries

Table 6.
Distribution, by sex and diagnostic group, December 2004—Continued

Diagnostic group	Total		Workers		Widow(er)s		Adult children	
	Number	Percent	Number	Percent	Number	Percent	Number	Percent
<i>Women</i>								
Subtotal	3,372,436	100.0	2,824,159	100.0	203,720	100.0	344,557	100.0
Congenital anomalies	9,068	0.3	5,002	0.2	251	0.1	3,815	1.1
Endocrine, nutritional, and metabolic diseases	161,243	4.8	141,600	5.0	18,145	8.9	1,498	0.4
Infectious and parasitic diseases	31,332	0.9	28,252	1.0	1,683	0.8	1,397	0.4
Injuries	88,974	2.6	81,070	2.9	5,026	2.5	2,878	0.8
Mental disorders								
Retardation	275,047	8.2	109,031	3.9	9,298	4.6	156,718	45.5
Other	948,549	28.1	861,925	30.5	47,123	23.1	39,501	11.5
Neoplasms	94,270	2.8	89,383	3.2	4,129	2.0	758	0.2
Diseases of the—								
Blood and blood-forming organs	9,776	0.3	8,481	0.3	342	0.2	953	0.3
Circulatory system	217,728	6.5	196,027	6.9	20,147	9.9	1,554	0.5
Digestive system	45,632	1.4	43,076	1.5	2,275	1.1	281	0.1
Genitourinary system	43,589	1.3	40,988	1.5	1,737	0.9	864	0.3
Musculoskeletal system and connective tissue	804,295	23.8	744,184	26.4	57,249	28.1	2,862	0.8
Nervous system and sense organs	342,898	10.2	296,499	10.5	14,590	7.2	31,809	9.2
Respiratory system	108,026	3.2	96,881	3.4	10,614	5.2	531	0.2
Skin and subcutaneous tissue	9,459	0.3	8,837	0.3	470	0.2	152	a
Other	7,040	0.2	6,192	0.2	255	0.1	593	0.2
Unknown	175,510	5.2	66,731	2.4	10,386	5.1	98,393	28.6

SOURCE: Social Security Administration, Disabled Beneficiaries and Dependents Master Beneficiary Record file, 100 percent data.

NOTE: The diagnosis for disabled adult children typically was not recorded on the Master Beneficiary Record until 1984. Many beneficiaries entitled before that date are still on the rolls today.

a. Less than 0.05 percent.

CONTACT: Kevin Kulzer (410) 965-5366 or di.asr@ssa.gov.

Table 7.
Average monthly benefit, by sex and diagnostic group, December 2004 (in dollars)

Diagnostic group	Total	Workers	Widow(er)s	Adult children
<i>All disabled beneficiaries</i>				
Total	852.50	894.10	582.70	587.60
Congenital anomalies	707.80	778.40	597.10	619.60
Endocrine, nutritional, and metabolic diseases	830.30	852.70	568.50	580.90
Infectious and parasitic diseases	872.00	885.40	577.80	552.00
Injuries	906.60	923.70	564.60	611.30
Mental disorders				
Retardation	592.10	610.30	524.50	577.60
Other	801.50	820.00	600.20	589.70
Neoplasms	1,027.10	1,042.00	600.60	608.70
Diseases of the—				
Blood and blood-forming organs	804.00	841.50	562.50	544.80
Circulatory system	1,006.50	1,023.90	580.60	603.90
Digestive system	935.30	946.00	601.70	574.80
Genitourinary system	927.80	940.50	577.60	559.60
Musculoskeletal system and connective tissue	934.40	949.00	582.40	580.00
Nervous system and sense organs	887.10	927.00	587.30	604.20
Respiratory system	921.40	941.40	598.90	555.80
Skin and subcutaneous tissue	855.40	869.30	586.30	555.40
Other	930.00	974.30	599.70	575.10
Unknown	704.20	873.70	563.10	596.80
<i>Men</i>				
Subtotal	955.60	1,002.30	416.60	585.20
Congenital anomalies	746.30	844.80	364.70	619.80
Endocrine, nutritional, and metabolic diseases	1,028.00	1,035.50	415.60	579.70
Infectious and parasitic diseases	917.50	925.30	457.80	542.90
Injuries	974.60	988.20	409.30	611.50
Mental disorders				
Retardation	610.60	644.80	354.80	573.70
Other	867.00	888.70	425.10	589.70
Neoplasms	1,199.40	1,207.90	435.30	604.50
Diseases of the—				
Blood and blood-forming organs	892.20	940.90	346.90	545.10
Circulatory system	1,140.10	1,144.50	428.60	597.20
Digestive system	1,067.40	1,071.80	451.70	566.90
Genitourinary system	1,024.60	1,032.80	449.80	552.30
Musculoskeletal system and connective tissue	1,100.80	1,103.80	414.80	576.40
Nervous system and sense organs	988.80	1,037.10	403.50	598.10
Respiratory system	1,119.00	1,123.90	425.20	553.00
Skin and subcutaneous tissue	989.20	997.80	394.70	555.60
Other	1,008.20	1,058.40	420.90	573.00
Unknown	746.50	969.20	395.60	596.70

(Continued)

All Disabled Beneficiaries

Table 7.
Average monthly benefit, by sex and diagnostic group, December 2004 (in dollars)—Continued

Diagnostic group	Total	Workers	Widow(er)s	Adult children
		<i>Women</i>		
Subtotal	736.50	765.00	588.50	590.40
Congenital anomalies	667.20	706.70	606.40	619.30
Endocrine, nutritional, and metabolic diseases	698.40	716.00	571.30	581.90
Infectious and parasitic diseases	750.60	769.80	584.50	562.30
Injuries	755.80	772.10	575.00	610.70
Mental disorders				
Retardation	566.20	546.40	530.50	582.10
Other	734.30	748.00	605.40	589.70
Neoplasms	872.50	887.00	606.30	614.40
Diseases of the—				
Blood and blood-forming organs	730.90	758.20	573.80	544.40
Circulatory system	756.80	775.20	589.00	611.80
Digestive system	785.10	795.70	609.80	583.40
Genitourinary system	786.70	799.80	587.10	567.60
Musculoskeletal system and connective tissue	768.70	783.30	587.50	582.70
Nervous system and sense organs	787.30	815.80	593.20	611.10
Respiratory system	741.30	757.30	604.40	558.10
Skin and subcutaneous tissue	767.20	780.20	592.00	555.20
Other	857.60	894.90	604.60	577.60
Unknown	662.50	773.70	569.80	596.80

SOURCE: Social Security Administration, Disabled Beneficiaries and Dependents Master Beneficiary Record file, 100 percent data.

NOTE: The diagnosis for disabled adult children typically was not recorded on the Master Beneficiary Record until 1984. Many beneficiaries entitled before that date are still on the rolls today.

CONTACT: Kevin Kulzer (410) 965-5366 or di.asr@ssa.gov.

Table 8.
Number aged 18–64 as a percentage of the resident population aged 18–64, by state,
December 2004

State	Resident population ^a	Beneficiaries	
		Number	Percentage of resident population
United States	184,083,421	6,838,148	3.7
Alabama	2,837,690	179,203	6.3
Alaska	425,319	10,006	2.4
Arizona	3,464,503	124,731	3.6
Arkansas	1,694,973	108,717	6.4
California	22,474,379	594,961	2.6
Colorado	2,971,543	75,221	2.5
Connecticut	2,191,123	71,701	3.3
Delaware	527,897	21,505	4.1
District of Columbia	376,805	10,780	2.9
Florida	10,466,288	415,927	4.0
Georgia	5,649,734	210,245	3.7
Hawaii	792,139	20,032	2.5
Idaho	862,156	30,096	3.5
Illinois	7,954,855	246,120	3.1
Indiana	3,865,264	153,188	4.0
Iowa	1,840,875	65,071	3.5
Kansas	1,697,432	57,108	3.4
Kentucky	2,646,408	173,362	6.6
Louisiana	2,823,165	131,908	4.7
Maine	845,373	48,817	5.8
Maryland	3,528,507	97,238	2.8
Massachusetts	4,097,973	163,210	4.0
Michigan	6,332,586	263,081	4.2
Minnesota	3,245,499	96,494	3.0
Mississippi	1,800,530	116,304	6.5
Missouri	3,604,384	171,034	4.7
Montana	592,223	21,959	3.7
Nebraska	1,080,845	35,408	3.3
Nevada	1,469,096	46,655	3.2
New Hampshire	837,834	33,713	4.0
New Jersey	5,416,679	167,528	3.1
New Mexico	1,181,528	46,438	3.9
New York	12,161,909	444,862	3.7
North Carolina	5,390,480	264,082	4.9
North Dakota	402,240	12,365	3.1
Ohio	7,154,883	268,629	3.8
Oklahoma	2,199,243	94,842	4.3
Oregon	2,282,408	79,133	3.5
Pennsylvania	7,672,780	317,000	4.1
Rhode Island	686,232	31,016	4.5

(Continued)

All Disabled Beneficiaries

Table 8.
Number aged 18–64 as a percentage of the resident population aged 18–64, by state,
December 2004—Continued

State	Resident population ^a	Beneficiaries	
		Number	Percentage of resident population
South Carolina	2,652,976	140,239	5.3
South Dakota	470,516	15,801	3.4
Tennessee	3,771,620	195,240	5.2
Texas	14,006,633	397,752	2.8
Utah	1,441,214	30,686	2.1
Vermont	405,738	16,956	4.2
Virginia	4,808,006	175,800	3.7
Washington	4,014,623	127,988	3.2
West Virginia	1,152,359	87,721	7.6
Wisconsin	3,485,472	120,189	3.4
Wyoming	328,484	10,086	3.1

SOURCES: Social Security Administration, Disabled Beneficiaries and Dependents Master Beneficiary Record file, 100 percent data; U.S. Census Bureau, 2004 estimates of resident population.

NOTE: Data exclude United States territories and other areas.

a. Population estimates for the United States as of July 1, 2004, as reported by the U.S. Census Bureau.

CONTACT: Kevin Kulzer (410) 965-5366 or di.asr@ssa.gov.

Table 9.
Distribution, by state or other area, December 2004

State or area	Total		Workers		Widow(er)s		Adult children	
	Number	Percent	Number	Percent	Number	Percent	Number	Percent
All areas	7,167,375	100.0	6,197,385	100.0	210,736	100.0	759,254	100.0
Alabama	182,537	2.5	158,703	2.6	6,689	3.2	17,145	2.3
Alaska	10,140	0.1	9,150	0.1	242	0.1	748	0.1
Arizona	126,600	1.8	114,578	1.8	3,111	1.5	8,911	1.2
Arkansas	110,732	1.5	97,653	1.6	3,903	1.9	9,176	1.2
California	605,785	8.5	528,609	8.5	13,984	6.6	63,192	8.3
Colorado	76,462	1.1	68,862	1.1	1,751	0.8	5,849	0.8
Connecticut	73,525	1.0	62,517	1.0	1,533	0.7	9,475	1.2
Delaware	21,926	0.3	19,473	0.3	510	0.2	1,943	0.3
District of Columbia	10,988	0.2	9,436	0.2	252	0.1	1,300	0.2
Florida	423,668	5.9	378,099	6.1	11,500	5.5	34,069	4.5
Georgia	214,408	3.0	186,943	3.0	7,216	3.4	20,249	2.7
Hawaii	20,549	0.3	17,740	0.3	471	0.2	2,338	0.3
Idaho	30,714	0.4	27,302	0.4	784	0.4	2,628	0.3
Illinois	251,709	3.5	212,168	3.4	7,382	3.5	32,159	4.2
Indiana	156,502	2.2	134,461	2.2	4,875	2.3	17,166	2.3
Iowa	66,845	0.9	56,604	0.9	1,656	0.8	8,585	1.1
Kansas	58,435	0.8	50,782	0.8	1,558	0.7	6,095	0.8
Kentucky	176,630	2.5	153,184	2.5	7,046	3.3	16,400	2.2
Louisiana	134,653	1.9	110,422	1.8	5,836	2.8	18,395	2.4
Maine	49,799	0.7	44,038	0.7	1,165	0.6	4,596	0.6
Maryland	99,184	1.4	85,926	1.4	2,372	1.1	10,886	1.4
Massachusetts	166,687	2.3	145,391	2.3	3,318	1.6	17,978	2.4
Michigan	268,844	3.8	227,568	3.7	8,043	3.8	33,233	4.4
Minnesota	98,857	1.4	85,488	1.4	1,825	0.9	11,544	1.5
Mississippi	118,519	1.7	102,132	1.6	4,581	2.2	11,806	1.6
Missouri	174,543	2.4	152,857	2.5	5,473	2.6	16,213	2.1
Montana	22,433	0.3	19,673	0.3	592	0.3	2,168	0.3
Nebraska	36,321	0.5	31,282	0.5	822	0.4	4,217	0.6
Nevada	47,388	0.7	43,613	0.7	1,159	0.5	2,616	0.3
New Hampshire	34,370	0.5	30,822	0.5	738	0.4	2,810	0.4
New Jersey	171,482	2.4	147,396	2.4	4,137	2.0	19,949	2.6
New Mexico	47,254	0.7	41,660	0.7	1,224	0.6	4,370	0.6
New York	456,303	6.4	387,666	6.3	12,070	5.7	56,567	7.5
North Carolina	269,787	3.8	237,795	3.8	8,499	4.0	23,493	3.1
North Dakota	12,791	0.2	10,478	0.2	293	0.1	2,020	0.3
Ohio	274,906	3.8	230,460	3.7	9,232	4.4	35,214	4.6
Oklahoma	96,955	1.4	84,410	1.4	3,309	1.6	9,236	1.2
Oregon	80,659	1.1	71,398	1.2	2,027	1.0	7,234	1.0
Pennsylvania	324,929	4.5	275,892	4.5	9,813	4.7	39,224	5.2
Rhode Island	31,676	0.4	27,875	0.4	683	0.3	3,118	0.4

(Continued)

All Disabled Beneficiaries

Table 9.
Distribution, by state or other area, December 2004—Continued

State or area	Total		Workers		Widow(er)s		Adult children	
	Number	Percent	Number	Percent	Number	Percent	Number	Percent
South Carolina	143,104	2.0	124,724	2.0	5,038	2.4	13,342	1.8
South Dakota	16,300	0.2	13,837	0.2	385	0.2	2,078	0.3
Tennessee	199,064	2.8	172,989	2.8	7,502	3.6	18,573	2.4
Texas	405,629	5.7	350,669	5.7	13,680	6.5	41,280	5.4
Utah	31,270	0.4	27,163	0.4	712	0.3	3,395	0.4
Vermont	17,320	0.2	14,992	0.2	444	0.2	1,884	0.2
Virginia	179,511	2.5	156,592	2.5	5,612	2.7	17,307	2.3
Washington	130,151	1.8	115,238	1.9	3,061	1.5	11,852	1.6
West Virginia	89,720	1.3	76,039	1.2	3,695	1.8	9,986	1.3
Wisconsin	123,217	1.7	104,633	1.7	2,695	1.3	15,889	2.1
Wyoming	10,288	0.1	9,166	0.1	235	0.1	887	0.1
Outlying areas								
American Samoa	1,199	a	1,045	a	53	a	101	a
Guam	1,219	a	1,055	a	34	a	130	a
Northern Mariana Islands	219	a	169	a	5	a	45	a
Puerto Rico	162,612	2.3	134,694	2.2	5,095	2.4	22,823	3.0
Virgin Islands	1,922	a	1,554	a	64	a	304	a
Foreign countries	18,135	0.3	12,320	0.2	752	0.4	5,063	0.7

SOURCE: Social Security Administration, Disabled Beneficiaries and Dependents Master Beneficiary Record file, 100 percent data.

a. Less than 0.05 percent.

CONTACT: Kevin Kulzer (410) 965-5366 or di.asr@ssa.gov.

Table 10.
Number, by state or other area and diagnostic group, December 2004

State or area	Total	Congenital anomalies	Endocrine, nutritional, and metabolic diseases	Infectious and parasitic diseases	Injuries	Mental disorders			Neoplasms
						Total	Retardation	Other	
All areas	7,167,375	18,634	268,859	114,942	286,513	2,583,382	661,285	1,922,097	178,889
Alabama	182,537	354	7,850	1,914	8,181	55,705	15,772	39,933	4,075
Alaska	10,140	26	302	120	487	3,717	803	2,914	307
Arizona	126,600	272	4,231	1,832	5,539	49,817	7,440	42,377	2,897
Arkansas	110,732	288	4,482	1,213	4,996	29,942	10,366	19,576	2,884
California	605,785	1,611	19,540	15,183	25,391	233,239	41,334	191,905	15,597
Colorado	76,462	289	2,368	1,270	3,767	25,124	6,035	19,089	2,033
Connecticut	73,525	188	2,404	1,191	2,202	31,724	7,688	24,036	1,862
Delaware	21,926	63	854	432	865	7,354	1,917	5,437	609
District of Columbia	10,988	14	372	723	271	4,571	1,260	3,311	189
Florida	423,668	1,153	16,704	12,119	21,406	140,800	27,550	113,250	11,725
Georgia	214,408	479	9,595	4,653	8,455	68,694	20,340	48,354	5,507
Hawaii	20,549	41	598	385	824	8,929	1,679	7,250	560
Idaho	30,714	97	1,067	256	1,449	11,480	2,590	8,890	801
Illinois	251,709	597	10,305	3,739	8,877	102,964	28,057	74,907	6,604
Indiana	156,502	342	7,482	1,717	5,367	57,972	18,355	39,617	4,062
Iowa	66,845	226	2,640	505	2,531	26,283	9,262	17,021	1,753
Kansas	58,435	164	2,714	599	2,682	21,441	6,845	14,596	1,476
Kentucky	176,630	364	6,192	1,400	6,125	63,493	16,753	46,740	3,547
Louisiana	134,653	306	5,125	2,121	5,715	39,406	16,271	23,135	3,112
Maine	49,799	156	1,520	355	1,841	20,987	4,256	16,731	1,010
Maryland	99,184	352	3,626	2,516	3,969	34,105	9,527	24,578	3,143
Massachusetts	166,687	526	4,209	2,813	5,603	77,436	13,421	64,015	3,912
Michigan	268,844	681	10,340	2,382	9,352	107,537	26,182	81,355	6,420
Minnesota	98,857	262	2,554	964	3,894	46,704	11,983	34,721	2,543
Mississippi	118,519	207	5,486	1,410	4,826	40,643	11,690	28,953	2,787
Missouri	174,543	511	7,990	2,193	7,741	56,912	17,397	39,515	4,183
Montana	22,433	68	653	182	1,197	7,567	2,026	5,541	530
Nebraska	36,321	116	1,486	385	1,685	12,253	4,051	8,202	955
Nevada	47,388	150	1,696	829	2,158	14,543	2,223	12,320	1,216
New Hampshire	34,370	86	879	275	1,258	15,271	2,538	12,733	816
New Jersey	171,482	430	5,365	3,251	6,190	61,659	14,082	47,577	5,243
New Mexico	47,254	153	1,708	616	2,529	15,964	3,606	12,358	957
New York	456,303	1,122	14,288	10,722	16,321	148,628	39,947	108,681	12,022
North Carolina	269,787	619	12,852	4,191	9,989	85,690	28,165	57,525	7,091
North Dakota	12,791	59	337	78	568	5,054	1,996	3,058	334
Ohio	274,906	837	10,354	2,525	8,209	123,115	34,350	88,765	6,149
Oklahoma	96,955	223	4,285	1,103	4,043	31,017	9,476	21,541	2,311
Oregon	80,659	230	2,784	1,073	3,996	28,496	6,824	21,672	2,125
Pennsylvania	324,929	981	12,481	3,983	13,542	110,051	33,377	76,674	8,425
Rhode Island	31,676	51	992	381	976	14,064	3,101	10,963	744

(Continued)

All Disabled Beneficiaries

Table 10.
Number, by state or other area and diagnostic group, December 2004—Continued

State or area	Diseases of the—								Other	Unknown
	Blood and blood-forming organs	Circulatory system	Digestive system	Genitourinary system	Musculoskeletal system and connective tissue	Nervous system and sense organs	Respiratory system	Skin and subcutaneous tissue		
All areas	17,879	624,774	97,551	107,088	1,604,595	679,618	206,508	15,702	13,558	348,883
Alabama	620	19,228	2,353	2,727	49,171	15,394	5,904	463	361	8,237
Alaska	26	672	158	115	2,501	1,121	265	25	27	271
Arizona	215	9,037	1,939	1,768	28,559	12,480	3,382	262	351	4,019
Arkansas	302	12,423	1,623	1,307	32,754	10,259	4,018	353	156	3,732
California	1,262	42,631	9,415	10,735	137,345	59,367	10,936	1,155	1,398	20,980
Colorado	121	4,402	1,214	1,010	18,902	10,186	2,514	157	182	2,923
Connecticut	171	5,231	893	956	13,012	7,086	1,805	169	114	4,517
Delaware	79	1,838	299	412	5,454	2,043	640	35	59	890
District of Columbia	49	836	86	413	1,554	1,102	213	40	17	538
Florida	1,267	40,941	7,240	6,356	91,134	35,798	12,682	1,719	839	21,785
Georgia	847	22,651	2,989	4,291	47,886	17,917	7,205	500	336	12,403
Hawaii	30	1,984	202	550	3,345	1,720	408	50	64	859
Idaho	33	2,040	429	302	7,344	3,403	872	63	61	1,017
Illinois	753	21,945	2,964	4,193	43,259	25,548	7,152	473	457	11,879
Indiana	398	14,576	2,300	2,164	29,366	16,291	5,982	255	284	7,944
Iowa	133	4,608	790	782	13,548	7,185	2,145	127	112	3,477
Kansas	130	4,541	806	792	11,997	6,255	1,972	103	114	2,649
Kentucky	278	16,235	2,142	1,569	45,641	13,037	6,705	318	315	9,269
Louisiana	509	15,200	1,635	2,371	34,844	11,599	3,399	380	265	8,666
Maine	56	3,501	574	341	11,844	4,261	1,293	148	90	1,822
Maryland	420	9,863	1,331	2,383	18,285	10,693	2,801	218	164	5,315
Massachusetts	283	9,977	2,246	1,477	31,462	15,286	3,740	244	365	7,108
Michigan	651	22,736	3,056	3,834	54,873	25,566	7,465	580	406	12,965
Minnesota	188	6,249	1,070	1,082	16,162	10,780	2,053	156	160	4,036
Mississippi	416	13,945	1,240	2,049	24,564	9,753	3,539	331	250	7,073
Missouri	431	15,534	2,670	2,179	43,133	16,751	6,310	375	305	7,325
Montana	27	1,358	281	236	5,750	2,738	770	38	51	987
Nebraska	70	2,916	471	532	8,149	4,270	1,195	59	52	1,727
Nevada	112	4,425	898	705	12,246	4,914	1,711	107	114	1,564
New Hampshire	47	2,359	436	265	6,982	3,407	1,020	53	70	1,146
New Jersey	520	16,232	2,625	2,986	34,973	18,157	4,566	371	426	8,488
New Mexico	86	2,857	786	740	12,674	4,923	1,344	139	119	1,659
New York	1,255	37,838	5,526	6,390	121,313	40,703	12,040	846	597	26,692
North Carolina	788	29,104	3,878	4,596	62,353	22,488	9,310	652	529	15,657
North Dakota	20	969	139	156	2,540	1,494	381	21	19	622
Ohio	579	21,796	2,756	3,670	42,840	24,247	8,504	383	338	18,604
Oklahoma	167	9,626	1,445	1,276	25,055	9,472	3,599	234	152	2,947
Oregon	149	5,495	1,317	927	19,048	10,021	2,176	162	140	2,520
Pennsylvania	724	29,853	4,827	4,398	75,525	32,136	9,248	509	887	17,359
Rhode Island	64	2,254	456	294	6,149	2,765	814	76	95	1,501

(Continued)

Table 10.
Number, by state or other area and diagnostic group, December 2004—Continued

State or area	Total	Congenital anomalies	Endocrine, nutritional, and metabolic diseases	Infectious and parasitic diseases	Injuries	Mental disorders			Neoplasms
						Total	Retardation	Other	
South Carolina	143,104	283	5,592	1,907	5,848	47,818	13,155	34,663	3,428
South Dakota	16,300	70	434	165	594	5,976	2,092	3,884	358
Tennessee	199,064	443	7,770	2,101	6,817	72,221	18,544	53,677	4,785
Texas	405,629	906	19,464	8,494	17,939	122,016	32,746	89,270	11,130
Utah	31,270	149	1,093	294	1,263	12,730	3,490	9,240	691
Vermont	17,320	73	610	182	713	7,079	1,558	5,521	410
Virginia	179,511	482	7,154	2,597	6,767	58,935	18,786	40,149	4,834
Washington	130,151	385	4,381	1,912	5,190	53,199	10,551	42,648	3,513
West Virginia	89,720	202	3,987	571	4,329	27,600	10,206	17,394	1,815
Wisconsin	123,217	515	4,405	1,168	4,690	49,581	14,075	35,506	2,972
Wyoming	10,288	40	308	104	563	3,521	1,000	2,521	230
Outlying areas									
American Samoa	1,199	a	171	a	45	137	53	84	28
Guam	1,219	a	18	13	58	335	123	212	41
Northern Mariana Islands	219	0	6	a	14	61	24	37	5
Puerto Rico	162,612	272	2,471	1,581	5,760	74,898	12,219	62,679	1,735
Virgin Islands	1,922	a	42	25	95	561	189	372	45
Foreign countries	18,135	110	243	220	811	6,363	1,939	4,424	353

(Continued)

All Disabled Beneficiaries

Table 10.
Number, by state or other area and diagnostic group, December 2004—Continued

State or area	Diseases of the—								Other	Unknown
	Blood and blood-forming organs	Circulatory system	Digestive system	Genitourinary system	Musculoskeletal system and connective tissue	Nervous system and sense organs	Respiratory system	Skin and subcutaneous tissue		
South Carolina	614	16,107	1,881	2,663	33,290	11,988	5,073	382	263	5,967
South Dakota	24	1,216	171	179	3,633	2,228	536	31	32	653
Tennessee	419	19,464	2,495	2,820	44,597	15,852	7,205	454	328	11,293
Texas	1,017	39,954	6,322	8,772	95,926	43,633	10,752	842	754	17,708
Utah	45	1,758	445	413	6,096	3,960	889	58	75	1,311
Vermont	30	1,127	227	127	3,593	1,617	490	32	37	973
Virginia	569	17,427	2,483	3,305	43,759	16,104	5,781	372	333	8,609
Washington	280	8,271	2,154	1,631	26,859	13,778	3,334	275	241	4,748
West Virginia	137	8,936	1,100	664	23,285	6,478	3,605	182	161	6,668
Wisconsin	263	8,551	1,504	1,560	23,670	14,081	2,904	208	211	6,934
Wyoming	19	735	142	124	2,427	1,312	457	19	29	258
Outlying areas										
American Samoa	a	120	a	25	442	120	34	21	10	25
Guam	a	175	15	65	252	153	39	a	15	29
Northern Mariana Islands	a	42	a	10	16	36	a	10	a	7
Puerto Rico	142	9,215	954	1,224	39,209	13,567	3,068	416	190	7,910
Virgin Islands	13	220	16	48	496	251	a	a	a	69
Foreign countries	24	1,550	125	129	3,509	1,844	233	42	30	2,549

SOURCE: Social Security Administration, Disabled Beneficiaries and Dependents Master Beneficiary Record file, 100 percent data.

NOTE: The diagnosis for disabled adult children typically was not recorded on the Master Beneficiary Record until 1984. Many beneficiaries entitled before that date are still on the rolls today.

a. Data not shown to avoid disclosure of information for particular individuals.

CONTACT: Kevin Kulzer (410) 965-5366 or di.asr@ssa.gov.

Table 11.
Percentage distribution, by state or other area and diagnostic group, December 2004

State or area	Total		Congenital anomalies	Endocrine, nutritional, and metabolic diseases	Infectious and parasitic diseases	Injuries	Mental disorders			Neoplasms
	Number	Percent					Total	Retardation	Other	
All areas	7,167,375	100.0	0.3	3.8	1.6	4.0	36.0	9.2	26.8	2.5
Alabama	182,537	100.0	0.2	4.3	1.0	4.5	30.5	8.6	21.9	2.2
Alaska	10,140	100.0	0.3	3.0	1.2	4.8	36.6	7.9	28.7	3.0
Arizona	126,600	100.0	0.2	3.3	1.4	4.4	39.4	5.9	33.5	2.3
Arkansas	110,732	100.0	0.3	4.0	1.1	4.5	27.1	9.4	17.7	2.6
California	605,785	100.0	0.3	3.2	2.5	4.2	38.5	6.8	31.7	2.6
Colorado	76,462	100.0	0.4	3.1	1.7	4.9	32.9	7.9	25.0	2.7
Connecticut	73,525	100.0	0.3	3.3	1.6	3.0	43.2	10.5	32.7	2.5
Delaware	21,926	100.0	0.3	3.9	2.0	3.9	33.5	8.7	24.8	2.8
District of Columbia	10,988	100.0	0.1	3.4	6.6	2.5	41.6	11.5	30.1	1.7
Florida	423,668	100.0	0.3	3.9	2.9	5.1	33.2	6.5	26.7	2.8
Georgia	214,408	100.0	0.2	4.5	2.2	3.9	32.1	9.5	22.6	2.6
Hawaii	20,549	100.0	0.2	2.9	1.9	4.0	43.5	8.2	35.3	2.7
Idaho	30,714	100.0	0.3	3.5	0.8	4.7	37.3	8.4	28.9	2.6
Illinois	251,709	100.0	0.2	4.1	1.5	3.5	40.9	11.1	29.8	2.6
Indiana	156,502	100.0	0.2	4.8	1.1	3.4	37.0	11.7	25.3	2.6
Iowa	66,845	100.0	0.3	3.9	0.8	3.8	39.4	13.9	25.5	2.6
Kansas	58,435	100.0	0.3	4.6	1.0	4.6	36.7	11.7	25.0	2.5
Kentucky	176,630	100.0	0.2	3.5	0.8	3.5	36.0	9.5	26.5	2.0
Louisiana	134,653	100.0	0.2	3.8	1.6	4.2	29.3	12.1	17.2	2.3
Maine	49,799	100.0	0.3	3.1	0.7	3.7	42.1	8.5	33.6	2.0
Maryland	99,184	100.0	0.4	3.7	2.5	4.0	34.4	9.6	24.8	3.2
Massachusetts	166,687	100.0	0.3	2.5	1.7	3.4	46.5	8.1	38.4	2.3
Michigan	268,844	100.0	0.3	3.8	0.9	3.5	40.0	9.7	30.3	2.4
Minnesota	98,857	100.0	0.3	2.6	1.0	3.9	47.2	12.1	35.1	2.6
Mississippi	118,519	100.0	0.2	4.6	1.2	4.1	34.3	9.9	24.4	2.4
Missouri	174,543	100.0	0.3	4.6	1.3	4.4	32.6	10.0	22.6	2.4
Montana	22,433	100.0	0.3	2.9	0.8	5.3	33.7	9.0	24.7	2.4
Nebraska	36,321	100.0	0.3	4.1	1.1	4.6	33.8	11.2	22.6	2.6
Nevada	47,388	100.0	0.3	3.6	1.7	4.6	30.7	4.7	26.0	2.6
New Hampshire	34,370	100.0	0.3	2.6	0.8	3.7	44.4	7.4	37.0	2.4
New Jersey	171,482	100.0	0.3	3.1	1.9	3.6	35.9	8.2	27.7	3.1
New Mexico	47,254	100.0	0.3	3.6	1.3	5.4	33.8	7.6	26.2	2.0
New York	456,303	100.0	0.2	3.1	2.3	3.6	32.6	8.8	23.8	2.6
North Carolina	269,787	100.0	0.2	4.8	1.6	3.7	31.7	10.4	21.3	2.6
North Dakota	12,791	100.0	0.5	2.6	0.6	4.4	39.5	15.6	23.9	2.6
Ohio	274,906	100.0	0.3	3.8	0.9	3.0	44.8	12.5	32.3	2.2
Oklahoma	96,955	100.0	0.2	4.4	1.1	4.2	32.0	9.8	22.2	2.4
Oregon	80,659	100.0	0.3	3.5	1.3	5.0	35.4	8.5	26.9	2.6
Pennsylvania	324,929	100.0	0.3	3.8	1.2	4.2	33.9	10.3	23.6	2.6
Rhode Island	31,676	100.0	0.2	3.1	1.2	3.1	44.4	9.8	34.6	2.3

(Continued)

All Disabled Beneficiaries

Table 11.
Percentage distribution, by state or other area and diagnostic group, December 2004—Continued

State or area	Diseases of the—								Other	Unknown
	Blood and blood-forming organs	Circulatory system	Digestive system	Genitourinary system	Musculoskeletal system and connective tissue	Nervous system and sense organs	Respiratory system	Skin and subcutaneous tissue		
All areas	0.2	8.7	1.4	1.5	22.4	9.5	2.9	0.2	0.2	4.9
Alabama	0.3	10.5	1.3	1.5	26.9	8.4	3.2	0.3	0.2	4.5
Alaska	0.3	6.6	1.6	1.1	24.7	11.1	2.6	0.2	0.3	2.7
Arizona	0.2	7.1	1.5	1.4	22.6	9.9	2.7	0.2	0.3	3.2
Arkansas	0.3	11.2	1.5	1.2	29.6	9.3	3.6	0.3	0.1	3.4
California	0.2	7.0	1.6	1.8	22.7	9.8	1.8	0.2	0.2	3.5
Colorado	0.2	5.8	1.6	1.3	24.7	13.3	3.3	0.2	0.2	3.8
Connecticut	0.2	7.1	1.2	1.3	17.7	9.6	2.5	0.2	0.2	6.1
Delaware	0.4	8.4	1.4	1.9	24.9	9.3	2.9	0.2	0.3	4.1
District of Columbia	0.4	7.6	0.8	3.8	14.1	10.0	1.9	0.4	0.2	4.9
Florida	0.3	9.7	1.7	1.5	21.5	8.4	3.0	0.4	0.2	5.1
Georgia	0.4	10.6	1.4	2.0	22.3	8.4	3.4	0.2	0.2	5.8
Hawaii	0.1	9.7	1.0	2.7	16.3	8.4	2.0	0.2	0.3	4.2
Idaho	0.1	6.6	1.4	1.0	23.9	11.1	2.8	0.2	0.2	3.3
Illinois	0.3	8.7	1.2	1.7	17.2	10.1	2.8	0.2	0.2	4.7
Indiana	0.3	9.3	1.5	1.4	18.8	10.4	3.8	0.2	0.2	5.1
Iowa	0.2	6.9	1.2	1.2	20.3	10.7	3.2	0.2	0.2	5.2
Kansas	0.2	7.8	1.4	1.4	20.5	10.7	3.4	0.2	0.2	4.5
Kentucky	0.2	9.2	1.2	0.9	25.8	7.4	3.8	0.2	0.2	5.2
Louisiana	0.4	11.3	1.2	1.8	25.9	8.6	2.5	0.3	0.2	6.4
Maine	0.1	7.0	1.2	0.7	23.8	8.6	2.6	0.3	0.2	3.7
Maryland	0.4	9.9	1.3	2.4	18.4	10.8	2.8	0.2	0.2	5.4
Massachusetts	0.2	6.0	1.3	0.9	18.9	9.2	2.2	0.1	0.2	4.3
Michigan	0.2	8.5	1.1	1.4	20.4	9.5	2.8	0.2	0.2	4.8
Minnesota	0.2	6.3	1.1	1.1	16.3	10.9	2.1	0.2	0.2	4.1
Mississippi	0.4	11.8	1.0	1.7	20.7	8.2	3.0	0.3	0.2	6.0
Missouri	0.2	8.9	1.5	1.2	24.7	9.6	3.6	0.2	0.2	4.2
Montana	0.1	6.1	1.3	1.1	25.6	12.2	3.4	0.2	0.2	4.4
Nebraska	0.2	8.0	1.3	1.5	22.4	11.8	3.3	0.2	0.1	4.8
Nevada	0.2	9.3	1.9	1.5	25.8	10.4	3.6	0.2	0.2	3.3
New Hampshire	0.1	6.9	1.3	0.8	20.3	9.9	3.0	0.2	0.2	3.3
New Jersey	0.3	9.5	1.5	1.7	20.4	10.6	2.7	0.2	0.2	4.9
New Mexico	0.2	6.0	1.7	1.6	26.8	10.4	2.8	0.3	0.3	3.5
New York	0.3	8.3	1.2	1.4	26.6	8.9	2.6	0.2	0.1	5.8
North Carolina	0.3	10.8	1.4	1.7	23.1	8.3	3.5	0.2	0.2	5.8
North Dakota	0.2	7.6	1.1	1.2	19.9	11.7	3.0	0.2	0.1	4.9
Ohio	0.2	7.9	1.0	1.3	15.6	8.8	3.1	0.1	0.1	6.8
Oklahoma	0.2	9.9	1.5	1.3	25.8	9.8	3.7	0.2	0.2	3.0
Oregon	0.2	6.8	1.6	1.1	23.6	12.4	2.7	0.2	0.2	3.1
Pennsylvania	0.2	9.2	1.5	1.4	23.2	9.9	2.8	0.2	0.3	5.3
Rhode Island	0.2	7.1	1.4	0.9	19.4	8.7	2.6	0.2	0.3	4.7

(Continued)

Table 11.
Percentage distribution, by state or other area and diagnostic group, December 2004—Continued

State or area	Total		Congenital anomalies	Endocrine, nutritional, and metabolic diseases	Infectious and parasitic diseases	Injuries	Mental disorders			Neoplasms
	Number	Percent					Total	Retardation	Other	
South Carolina	143,104	100.0	0.2	3.9	1.3	4.1	33.4	9.2	24.2	2.4
South Dakota	16,300	100.0	0.4	2.7	1.0	3.6	36.6	12.8	23.8	2.2
Tennessee	199,064	100.0	0.2	3.9	1.1	3.4	36.3	9.3	27.0	2.4
Texas	405,629	100.0	0.2	4.8	2.1	4.4	30.1	8.1	22.0	2.7
Utah	31,270	100.0	0.5	3.5	0.9	4.0	40.7	11.2	29.5	2.2
Vermont	17,320	100.0	0.4	3.5	1.1	4.1	40.9	9.0	31.9	2.4
Virginia	179,511	100.0	0.3	4.0	1.4	3.8	32.9	10.5	22.4	2.7
Washington	130,151	100.0	0.3	3.4	1.5	4.0	40.9	8.1	32.8	2.7
West Virginia	89,720	100.0	0.2	4.4	0.6	4.8	30.8	11.4	19.4	2.0
Wisconsin	123,217	100.0	0.4	3.6	0.9	3.8	40.2	11.4	28.8	2.4
Wyoming	10,288	100.0	0.4	3.0	1.0	5.5	34.2	9.7	24.5	2.2
Outlying areas										
American Samoa	1,199	100.0	a	14.3	a	3.8	11.4	4.4	7.0	2.3
Guam	1,219	100.0	a	1.5	1.1	4.8	27.5	10.1	17.4	3.4
Northern Mariana Islands	219	100.0	0	2.7	a	6.4	27.9	11.0	16.9	2.3
Puerto Rico	162,612	100.0	0.2	1.5	1.0	3.5	46.0	7.5	38.5	1.1
Virgin Islands	1,922	100.0	a	2.2	1.3	4.9	29.2	9.8	19.4	2.3
Foreign countries	18,135	100.0	0.6	1.3	1.2	4.5	35.1	10.7	24.4	1.9

(Continued)

All Disabled Beneficiaries

Table 11.
Percentage distribution, by state or other area and diagnostic group, December 2004—Continued

State or area	Diseases of the—								Other	Unknown
	Blood and blood-forming organs	Circulatory system	Digestive system	Genitourinary system	Musculoskeletal system and connective tissue	Nervous system and sense organs	Respiratory system	Skin and subcutaneous tissue		
South Carolina	0.4	11.3	1.3	1.9	23.3	8.4	3.5	0.3	0.2	4.2
South Dakota	0.1	7.5	1.0	1.1	22.3	13.7	3.3	0.2	0.2	4.0
Tennessee	0.2	9.8	1.3	1.4	22.4	8.0	3.6	0.2	0.2	5.7
Texas	0.3	9.8	1.6	2.2	23.6	10.8	2.7	0.2	0.2	4.4
Utah	0.1	5.6	1.4	1.3	19.5	12.7	2.8	0.2	0.2	4.2
Vermont	0.2	6.5	1.3	0.7	20.7	9.3	2.8	0.2	0.2	5.6
Virginia	0.3	9.7	1.4	1.8	24.4	9.0	3.2	0.2	0.2	4.8
Washington	0.2	6.4	1.7	1.3	20.6	10.6	2.6	0.2	0.2	3.6
West Virginia	0.2	10.0	1.2	0.7	26.0	7.2	4.0	0.2	0.2	7.4
Wisconsin	0.2	6.9	1.2	1.3	19.2	11.4	2.4	0.2	0.2	5.6
Wyoming	0.2	7.1	1.4	1.2	23.6	12.8	4.4	0.2	0.3	2.5
Outlying areas										
American Samoa	a	10.0	a	2.1	36.9	10.0	2.8	1.8	0.8	2.1
Guam	a	14.4	1.2	5.3	20.7	12.6	3.2	a	1.2	2.4
Northern Mariana Islands	a	19.2	a	4.6	7.3	16.4	a	4.6	a	3.2
Puerto Rico	0.1	5.7	0.6	0.8	24.1	8.3	1.9	0.3	0.1	4.9
Virgin Islands	0.7	11.4	0.8	2.5	25.8	13.1	a	a	a	3.6
Foreign countries	0.1	8.5	0.7	0.7	19.3	10.2	1.3	0.2	0.2	14.1

SOURCE: Social Security Administration, Disabled Beneficiaries and Dependents Master Beneficiary Record file, 100 percent data.

NOTE: The diagnosis for disabled adult children typically was not recorded on the Master Beneficiary Record until 1984. Many beneficiaries entitled before that date are still on the rolls today.

a. Data not shown to avoid disclosure of information for particular individuals.

CONTACT: Kevin Kulzer (410) 965-5366 or di.asr@ssa.gov.

Table 12.
Number receiving Social Security disability benefits because of blindness or deafness,
by state or other area, December 2004

State or area	Blind				Deaf			
	Total	Workers	Widow(er)s	Adult children	Total	Workers	Widow(er)s	Adult children
All areas	102,769	90,425	2,208	10,136	58,994	49,562	1,069	8,363
Alabama	2,440	2,174	61	205	1,404	1,160	32	212
Alaska	149	140	a	a	115	104	a	a
Arizona	1,670	1,504	41	125	1,037	903	12	122
Arkansas	1,462	1,288	30	144	796	673	19	104
California	9,156	7,911	185	1,060	5,019	4,137	60	822
Colorado	990	890	16	84	751	672	13	66
Connecticut	1,174	998	23	153	651	557	5	89
Delaware	297	272	a	a	171	149	a	a
District of Columbia	174	158	a	a	286	239	a	a
Florida	4,785	4,289	106	390	3,913	3,314	52	547
Georgia	3,310	2,982	75	253	1,562	1,255	37	270
Hawaii	293	253	a	a	201	172	a	a
Idaho	428	388	5	35	196	169	5	22
Illinois	4,016	3,548	83	385	2,173	1,838	34	301
Indiana	2,566	2,311	44	211	1,419	1,233	29	157
Iowa	952	830	14	108	580	512	7	61
Kansas	1,023	926	15	82	586	528	6	52
Kentucky	2,225	1,888	68	269	1,250	1,019	38	193
Louisiana	2,104	1,807	66	231	1,182	835	47	300
Maine	515	456	5	54	309	281	a	a
Maryland	1,416	1,260	24	132	1,207	1,053	11	143
Massachusetts	2,657	2,138	45	474	1,204	1,023	17	164
Michigan	3,258	2,771	62	425	1,919	1,612	32	275
Minnesota	1,563	1,381	20	162	1,007	912	12	83
Mississippi	1,936	1,755	37	144	863	703	27	133
Missouri	2,510	2,238	51	221	1,239	1,090	16	133
Montana	291	261	9	21	170	145	a	a
Nebraska	548	489	5	54	317	297	a	a
Nevada	754	673	16	65	368	312	7	49
New Hampshire	352	305	8	39	215	190	a	a
New Jersey	2,542	2,267	45	230	1,462	1,260	21	181
New Mexico	754	649	23	82	381	321	15	45
New York	5,616	4,857	103	656	3,798	3,177	64	557
North Carolina	3,663	3,278	95	290	1,920	1,672	37	211
North Dakota	152	130	0	22	86	79	0	7
Ohio	4,139	3,685	103	351	2,477	2,105	60	312
Oklahoma	1,601	1,437	39	125	851	722	24	105
Oregon	1,406	1,230	22	154	832	713	12	107
Pennsylvania	4,510	3,955	92	463	2,424	2,028	52	344
Rhode Island	384	328	10	46	224	195	a	a

(Continued)

All Disabled Beneficiaries

Table 12.
Number receiving Social Security disability benefits because of blindness or deafness,
by state or other area, December 2004—Continued

State or area	Blind				Deaf			
	Total	Workers	Widow(er)s	Adult children	Total	Workers	Widow(er)s	Adult children
South Carolina	2,550	2,260	84	206	923	756	16	151
South Dakota	240	208	a	a	152	137	a	a
Tennessee	3,092	2,763	76	253	1,439	1,216	35	188
Texas	7,723	6,968	164	591	4,141	3,522	58	561
Utah	584	517	5	62	356	322	7	27
Vermont	177	154	a	a	124	112	a	a
Virginia	2,226	1,961	56	209	1,209	1,036	26	147
Washington	1,642	1,437	28	177	1,134	965	22	147
West Virginia	948	810	26	112	526	424	13	89
Wisconsin	1,512	1,321	23	168	1,039	914	14	111
Wyoming	123	113	a	a	65	60	0	5
Outlying areas								
Puerto Rico	1,786	1,509	63	214	1,132	629	31	472
Other ^b	100	88	a	a	60	44	a	a
Foreign countries	285	216	12	57	129	66	12	51

SOURCE: Social Security Administration, Disabled Beneficiaries and Dependents Master Beneficiary Record file, 100 percent data.

NOTE: The diagnosis for disabled adult children typically was not recorded on the Master Beneficiary Record until 1984. Many beneficiaries entitled before that date are still on the rolls today.

a. Data not shown to avoid disclosure of information for particular individuals.

b. Includes American Samoa, Guam, Northern Mariana Islands, and Virgin Islands.

CONTACT: Kevin Kulzer (410) 965-5366 or di.asr@ssa.gov.

Table 13.
Total monthly benefits, by state or other area, December 2004 (in thousands of dollars)

State or area	Total	Workers	Widow(er)s	Adult children
All areas	6,109,593	5,540,703	122,795	446,096
Alabama	150,509	137,693	3,647	9,169
Alaska	8,686	8,093	156	437
Arizona	113,220	105,941	1,889	5,390
Arkansas	89,915	83,102	2,049	4,764
California	530,254	483,141	8,815	38,298
Colorado	65,599	61,047	1,038	3,514
Connecticut	65,284	58,205	881	6,199
Delaware	19,714	18,190	295	1,229
District of Columbia	8,375	7,564	138	674
Florida	363,741	337,368	6,404	19,969
Georgia	179,208	164,363	3,805	11,040
Hawaii	18,066	16,382	297	1,388
Idaho	25,893	23,845	494	1,553
Illinois	220,354	195,324	4,551	20,479
Indiana	134,400	120,491	2,963	10,946
Iowa	54,592	48,368	954	5,270
Kansas	48,632	43,988	901	3,743
Kentucky	147,454	134,627	4,184	8,642
Louisiana	111,699	98,286	3,601	9,812
Maine	39,377	36,201	641	2,535
Maryland	87,510	79,290	1,459	6,761
Massachusetts	141,452	128,600	1,941	10,911
Michigan	243,545	216,326	5,325	21,894
Minnesota	83,624	75,484	1,070	7,070
Mississippi	93,972	85,770	2,418	5,784
Missouri	146,044	133,483	3,070	9,492
Montana	18,643	16,998	345	1,300
Nebraska	29,328	26,383	452	2,493
Nevada	43,774	41,386	725	1,663
New Hampshire	29,969	27,826	403	1,741
New Jersey	158,955	143,382	2,461	13,112
New Mexico	39,044	36,006	735	2,303
New York	408,603	365,747	7,174	35,682
North Carolina	224,250	207,350	4,163	12,737
North Dakota	9,991	8,681	162	1,148
Ohio	230,171	202,387	5,841	21,943
Oklahoma	81,076	73,956	1,909	5,212
Oregon	69,880	64,075	1,265	4,540
Pennsylvania	280,324	249,941	6,048	24,335
Rhode Island	26,358	24,129	372	1,857
South Carolina	120,279	110,484	2,537	7,258
South Dakota	12,702	11,346	213	1,143
Tennessee	162,630	148,522	4,003	10,105
Texas	342,102	310,886	8,080	23,136
Utah	26,495	23,960	442	2,094

(Continued)

All Disabled Beneficiaries

Table 13.
Total monthly benefits, by state or other area, December 2004 (in thousands of dollars)—Continued

State or area	Total	Workers	Widow(er)s	Adult children
Vermont	13,998	12,680	236	1,082
Virginia	153,867	140,886	3,220	9,762
Washington	113,770	104,294	1,936	7,541
West Virginia	79,350	71,470	2,396	5,484
Wisconsin	104,811	93,234	1,592	9,984
Wyoming	8,871	8,178	136	556
Outlying areas				
American Samoa	778	712	24	41
Guam	890	821	18	52
Northern Mariana Islands	113	96	3	14
Puerto Rico	113,618	102,680	2,441	8,496
Virgin Islands	1,589	1,399	40	150
Foreign countries	12,242	9,637	438	2,167

SOURCE: Social Security Administration, Disabled Beneficiaries and Dependents Master Beneficiary Record file, 100 percent data.

NOTES: Unnegotiated checks not deducted.

Data exclude lump-sum death payments.

CONTACT: Kevin Kulzer (410) 965-5366 or di.asr@ssa.gov.

Table 14.
Number, by type of representative payee, December 2004

Type of payee	Total	Workers	Widow(er)s	Adult children
All disabled beneficiaries	7,167,375	6,197,385	210,736	759,254
Without payee	5,827,590	5,464,905	196,882	165,803
With payee				
Parent (natural, adoptive, or stepparent)	454,085	213,899	534	239,652
Spouse	143,053	142,260	83	710
Child (natural, adoptive, or stepchild)	48,836	41,149	6,243	1,444
Other relative	257,197	130,906	3,177	123,114
Nonmental institution	131,609	54,331	1,506	75,772
Mental institution	98,956	27,290	307	71,359
Social agency	92,133	43,982	636	47,515
Public official	10,552	6,524	138	3,890
Financial organization	4,356	3,071	44	1,241
Other	99,008	69,068	1,186	28,754

SOURCE: Social Security Administration, Disabled Beneficiaries and Dependents Master Beneficiary Record file, 100 percent data.

CONTACT: Kevin Kulzer (410) 965-5366 or di.asr@ssa.gov.

All Disabled Beneficiaries

Table 15.
Representative payment, by sex and diagnostic group, December 2004

Diagnostic group	Workers			Widow(er)s			Adult children		
	Total	Number with payee	Percentage with payee	Total	Number with payee	Percentage with payee	Total	Number with payee	Percentage with payee
All disabled beneficiaries									
Total	6,197,385	732,480	11.8	210,736	13,854	6.6	759,254	593,451	78.2
Congenital anomalies	10,392	1,337	12.9	261	6	2.3	7,981	5,408	67.8
Endocrine, nutritional, and metabolic diseases	247,559	4,062	1.6	18,477	283	1.5	2,823	746	26.4
Infectious and parasitic diseases	110,178	3,438	3.1	1,777	55	3.1	2,987	1,664	55.7
Injuries	271,626	23,821	8.8	5,363	155	2.9	9,524	3,753	39.4
Mental disorders									
Retardation	310,240	170,546	55.0	9,623	2,562	26.6	341,422	301,171	88.2
Other	1,765,627	429,896	24.3	48,503	7,820	16.1	107,967	69,609	64.5
Neoplasms	172,844	2,734	1.6	4,269	70	1.6	1,776	975	54.9
Diseases of the—									
Blood and blood-forming organs	15,596	337	2.2	360	9	2.5	1,923	329	17.1
Circulatory system	600,144	29,949	5.0	21,262	803	3.8	3,368	1,642	48.8
Digestive system	94,566	2,624	2.8	2,398	51	2.1	587	113	19.3
Genitourinary system	103,427	1,252	1.2	1,866	38	2.0	1,795	367	20.4
Musculoskeletal system and connective tissue	1,540,566	15,662	1.0	59,012	540	0.9	5,017	1,030	20.5
Nervous system and sense organs	596,369	27,804	4.7	15,064	611	4.1	68,185	35,604	52.2
Respiratory system	194,592	2,380	1.2	10,953	135	1.2	963	301	31.3
Skin and subcutaneous tissue	14,963	200	1.3	484	a	a	255	45	17.6
Other	12,038	520	4.3	262	a	a	1,258	808	64.2
Unknown	136,658	15,918	11.6	10,802	707	6.5	201,423	169,886	84.3
Men									
Subtotal	3,373,226	483,544	14.3	7,016	544	7.8	414,697	331,259	79.9
Congenital anomalies	5,390	779	14.5	10	0	0	4,166	2,917	70.0
Endocrine, nutritional, and metabolic diseases	105,959	2,337	2.2	332	12	3.6	1,325	405	30.6
Infectious and parasitic diseases	81,926	2,754	3.4	94	a	a	1,590	933	58.7
Injuries	190,556	18,272	9.6	337	17	5.0	6,646	2,587	38.9
Mental disorders									
Retardation	201,209	113,894	56.6	325	84	25.8	184,704	166,167	90.0
Other	903,702	280,079	31.0	1,380	271	19.6	68,466	47,044	68.7
Neoplasms	83,461	1,654	2.0	140	6	4.3	1,018	575	56.5
Diseases of the—									
Blood and blood-forming organs	7,115	205	2.9	18	0	0	970	194	20.0
Circulatory system	404,117	19,566	4.8	1,115	43	3.9	1,814	930	51.3
Digestive system	51,490	1,985	3.9	123	5	4.1	306	70	22.9
Genitourinary system	62,439	842	1.3	129	a	a	931	199	21.4
Musculoskeletal system and connective tissue	796,382	10,373	1.3	1,763	28	1.6	2,155	567	26.3
Nervous system and sense organs	299,870	17,340	5.8	474	27	5.7	36,376	19,651	54.0
Respiratory system	97,711	1,574	1.6	339	13	3.8	432	168	38.9
Skin and subcutaneous tissue	6,126	115	1.9	14	0	0	103	25	24.3
Other	5,846	376	6.4	7	0	0	665	452	68.0
Unknown	69,927	11,399	16.3	416	33	7.9	103,030	88,375	85.8

(Continued)

Table 15.
Representative payment, by sex and diagnostic group, December 2004—Continued

Diagnostic group	Workers			Widow(er)s			Adult children		
	Total	Number with payee	Percent-age with payee	Total	Number with payee	Percent-age with payee	Total	Number with payee	Percent-age with payee
Women									
Subtotal	2,824,159	248,936	8.8	203,720	13,310	6.5	344,557	262,192	76.1
Congenital anomalies	5,002	558	11.2	251	6	2.4	3,815	2,491	65.3
Endocrine, nutritional, and metabolic diseases	141,600	1,725	1.2	18,145	271	1.5	1,498	341	22.8
Infectious and parasitic diseases	28,252	684	2.4	1,683	a	a	1,397	731	52.3
Injuries	81,070	5,549	6.8	5,026	138	2.7	2,878	1,166	40.5
Mental disorders									
Retardation	109,031	56,652	52.0	9,298	2,478	26.7	156,718	135,004	86.1
Other	861,925	149,817	17.4	47,123	7,549	16.0	39,501	22,565	57.1
Neoplasms	89,383	1,080	1.2	4,129	64	1.6	758	400	52.8
Diseases of the—									
Blood and blood-forming organs	8,481	132	1.6	342	9	2.6	953	135	14.2
Circulatory system	196,027	10,383	5.3	20,147	760	3.8	1,554	712	45.8
Digestive system	43,076	639	1.5	2,275	46	2.0	281	43	15.3
Genitourinary system	40,988	410	1.0	1,737	a	a	864	168	19.4
Musculoskeletal system and connective tissue	744,184	5,289	0.7	57,249	512	0.9	2,862	463	16.2
Nervous system and sense organs	296,499	10,464	3.5	14,590	584	4.0	31,809	15,953	50.2
Respiratory system	96,881	806	0.8	10,614	122	1.1	531	133	25.0
Skin and subcutaneous tissue	8,837	85	1.0	470	a	a	152	20	13.2
Other	6,192	144	2.3	255	a	a	593	356	60.0
Unknown	66,731	4,519	6.8	10,386	674	6.5	98,393	81,511	82.8

SOURCE: Social Security Administration, Disabled Beneficiaries and Dependents Master Beneficiary Record file, 100 percent data.

NOTE: The diagnosis for disabled adult children typically was not recorded on the Master Beneficiary Record until 1984. Many beneficiaries entitled before that date are still on the rolls today.

a. Data not shown to avoid disclosure of information for particular individuals.

CONTACT: Kevin Kulzer (410) 965-5366 or di.asr@ssa.gov.

All Disabled Beneficiaries

Table 16.
Percentage distribution of disabled workers, by state or other area and monthly benefit,
December 2004

State or area	Number	Percentage distribution by dollar amount of monthly benefit							Monthly benefit (dollars)	
		Total	Less than 400.00	400.00–599.90	600.00–799.90	800.00–999.90	1,000.00–1,199.90	1,200.00–or more	Average	Median
All areas	6,197,385	100.0	7.2	16.3	23.7	18.1	12.8	22.1	894.10	830.40
Alabama	158,703	100.0	7.0	17.2	25.7	18.8	12.2	19.1	867.70	799.20
Alaska	9,150	100.0	8.5	17.4	23.4	16.7	12.1	21.9	884.60	805.60
Arizona	114,578	100.0	6.0	14.6	22.9	18.4	13.7	24.4	924.70	864.00
Arkansas	97,653	100.0	7.1	17.2	25.8	20.2	13.3	16.5	851.10	799.00
California	528,609	100.0	8.0	15.9	21.7	16.8	12.6	25.0	914.10	847.00
Colorado	68,862	100.0	6.8	17.1	23.7	18.2	12.9	21.2	886.60	822.00
Connecticut	62,517	100.0	5.5	14.7	23.1	18.5	13.3	24.9	931.10	865.20
Delaware	19,473	100.0	5.9	14.4	22.9	17.8	13.7	25.3	934.20	871.20
District of Columbia	9,436	100.0	8.8	20.4	27.7	19.6	10.6	12.9	801.60	741.00
Florida	378,099	100.0	6.4	16.3	24.3	18.6	13.0	21.3	892.40	827.20
Georgia	186,943	100.0	6.2	16.0	25.4	20.1	13.4	19.0	879.30	821.20
Hawaii	17,740	100.0	5.7	15.3	22.3	18.5	14.3	23.9	923.50	869.00
Idaho	27,302	100.0	8.1	17.7	23.3	17.3	13.0	20.7	873.50	810.00
Illinois	212,168	100.0	6.9	15.4	22.3	17.5	12.9	25.0	920.70	855.00
Indiana	134,461	100.0	7.4	16.3	23.2	18.0	12.7	22.4	896.20	831.00
Iowa	56,604	100.0	8.9	18.1	24.1	17.3	12.2	19.3	854.60	789.00
Kansas	50,782	100.0	7.6	17.7	24.1	18.3	13.1	19.2	866.30	804.20
Kentucky	153,184	100.0	8.4	17.3	23.1	17.3	12.2	21.7	879.00	812.00
Louisiana	110,422	100.0	8.5	16.7	22.9	16.5	12.0	23.3	890.20	818.20
Maine	44,038	100.0	8.2	19.3	27.0	18.9	11.9	14.7	822.10	762.00
Maryland	85,926	100.0	6.3	14.8	22.8	18.3	13.7	24.2	922.90	862.20
Massachusetts	145,391	100.0	6.2	16.7	25.3	19.0	12.4	20.4	884.60	815.00
Michigan	227,568	100.0	7.5	15.1	20.4	15.4	12.2	29.4	950.70	885.00
Minnesota	85,488	100.0	7.5	17.2	24.1	17.9	12.0	21.4	883.10	812.00
Mississippi	102,132	100.0	7.1	17.8	27.6	19.4	12.2	15.9	839.90	779.00
Missouri	152,857	100.0	7.5	17.2	24.4	18.2	12.5	20.1	873.40	807.20
Montana	19,673	100.0	7.7	18.4	23.6	17.8	12.6	20.0	864.20	802.20
Nebraska	31,282	100.0	8.1	18.6	25.4	18.2	12.6	17.2	843.50	781.00
Nevada	43,613	100.0	5.0	13.4	22.6	18.8	14.1	26.1	949.10	889.20
New Hampshire	30,822	100.0	5.3	14.8	25.1	20.2	13.9	20.8	902.90	844.00
New Jersey	147,396	100.0	5.2	13.6	21.3	17.6	13.2	29.1	972.90	906.20
New Mexico	41,660	100.0	8.1	17.3	24.2	18.5	12.7	19.2	864.40	803.20
New York	387,666	100.0	6.7	15.1	21.3	16.9	12.7	27.3	943.60	874.20
North Carolina	237,795	100.0	5.9	15.5	25.8	21.4	13.8	17.4	872.10	821.20
North Dakota	10,478	100.0	8.8	19.7	25.2	17.9	11.9	16.6	828.60	762.20
Ohio	230,460	100.0	9.2	17.8	22.1	16.1	12.0	22.6	878.30	807.20
Oklahoma	84,410	100.0	7.9	16.8	23.3	17.9	13.6	20.6	876.30	819.20
Oregon	71,398	100.0	7.2	17.0	22.9	17.2	12.6	23.1	897.50	829.00
Pennsylvania	275,892	100.0	7.4	15.5	22.5	17.7	13.2	23.6	906.00	845.00
Rhode Island	27,875	100.0	6.6	17.5	26.2	18.8	12.1	18.8	865.70	797.00

(Continued)

Table 16.
Percentage distribution of disabled workers, by state or other area and monthly benefit,
December 2004—Continued

State or area	Number	Percentage distribution by dollar amount of monthly benefit							Monthly benefit (dollars)	
		Total	Less than 400.00	400.00–599.90	600.00–799.90	800.00–999.90	1,000.00–1,199.90	1,200.00–or more	Average	Median
South Carolina	124,724	100.0	5.6	14.8	25.2	21.4	14.3	18.7	885.90	836.00
South Dakota	13,837	100.0	9.4	19.7	25.4	17.8	12.2	15.5	820.10	758.20
Tennessee	172,989	100.0	6.8	17.2	26.2	19.5	12.8	17.6	858.60	798.20
Texas	350,669	100.0	7.7	16.1	23.5	18.4	13.1	21.2	886.70	825.20
Utah	27,163	100.0	7.9	18.4	23.4	16.3	11.7	22.3	882.20	803.20
Vermont	14,992	100.0	7.5	17.8	25.8	19.7	12.8	16.3	845.90	790.00
Virginia	156,592	100.0	6.6	15.4	23.7	19.0	13.4	21.9	899.80	840.00
Washington	115,238	100.0	7.4	16.7	22.9	16.9	12.3	23.9	905.10	831.00
West Virginia	76,039	100.0	8.3	14.8	19.9	15.8	12.7	28.5	940.00	883.00
Wisconsin	104,633	100.0	7.8	16.9	23.0	17.2	12.5	22.6	891.20	823.20
Wyoming	9,166	100.0	7.8	17.9	23.0	16.1	11.8	23.4	892.30	814.20
Outlying areas										
American Samoa	1,045	100.0	14.7	26.0	30.0	16.8	a	a	681.90	647.20
Guam	1,055	100.0	13.9	17.7	26.4	17.5	12.1	12.2	778.00	732.00
Northern Mariana Islands	169	100.0	24.9	37.3	24.3	7.1	a	a	569.10	542.00
Puerto Rico	134,694	100.0	6.1	21.4	36.5	19.1	9.0	8.0	762.50	712.20
Virgin Islands	1,554	100.0	5.9	14.2	24.6	20.1	14.5	20.6	900.40	841.60
Foreign countries	12,320	100.0	17.1	16.1	21.9	17.0	11.9	16.0	782.30	748.60

SOURCE: Social Security Administration, Disabled Beneficiaries and Dependents Master Beneficiary Record file, 100 percent data.

a. Data not shown to avoid disclosure of information for particular individuals.

CONTACT: Kevin Kulzer (410) 965-5366 or di.asr@ssa.gov.

All Disabled Beneficiaries

Table 17.
Percentage distribution of disabled widow(er)s, by state or other area and monthly benefit,
December 2004

State or area	Number	Percentage distribution by dollar amount of monthly benefit										Monthly benefit (dollars)	
		Total	Less than 200.00	200.00–299.90	300.00–399.90	400.00–499.90	500.00–599.90	600.00–699.90	700.00–799.90	800.00–899.90	900.00 or more	Average	Median
All areas	210,736	100.0	9.6	8.9	11.2	13.2	12.4	11.0	9.4	7.5	16.8	582.70	558.20
Alabama	6,689	100.0	11.5	9.8	11.6	14.0	12.8	11.9	9.4	6.8	12.2	545.20	523.00
Alaska	242	100.0	6.2	9.5	6.2	13.2	14.0	8.7	10.3	9.1	22.7	643.20	609.50
Arizona	3,111	100.0	8.2	8.6	10.8	12.5	12.5	10.3	9.9	8.3	19.0	607.30	577.00
Arkansas	3,903	100.0	12.8	11.1	11.7	13.6	13.7	11.5	8.0	6.2	11.4	525.10	505.00
California	13,984	100.0	7.1	7.5	10.1	13.1	11.7	10.4	10.0	8.4	21.7	630.40	604.00
Colorado	1,751	100.0	8.2	8.7	10.8	14.5	11.7	10.3	10.3	8.1	17.4	593.00	569.00
Connecticut	1,533	100.0	8.4	8.7	13.0	16.2	11.7	11.3	8.3	6.5	15.9	574.70	534.00
Delaware	510	100.0	10.0	7.3	12.9	14.9	13.1	8.6	10.2	6.7	16.3	578.20	540.50
District of Columbia	252	100.0	8.7	7.5	17.1	15.5	12.3	14.3	7.1	5.6	11.9	545.80	512.50
Florida	11,500	100.0	10.8	9.9	12.1	13.6	12.5	11.0	8.8	7.0	14.4	556.90	527.00
Georgia	7,216	100.0	13.1	10.4	12.5	14.2	12.8	10.3	8.8	6.1	11.8	527.40	498.00
Hawaii	471	100.0	6.4	7.2	11.5	11.5	13.6	10.8	9.8	8.3	21.0	630.00	597.20
Idaho	784	100.0	6.4	7.7	10.6	10.7	12.4	12.6	9.7	10.1	19.9	630.30	610.10
Illinois	7,382	100.0	8.1	7.9	10.3	12.7	11.7	11.1	9.5	8.3	20.5	616.50	593.00
Indiana	4,875	100.0	8.8	8.2	10.3	12.3	11.8	11.1	9.4	8.5	19.6	607.80	588.00
Iowa	1,656	100.0	8.0	9.2	11.7	12.6	14.1	12.4	10.0	8.0	14.0	576.20	560.50
Kansas	1,558	100.0	9.1	9.2	11.4	13.2	12.9	10.8	10.3	8.2	15.1	578.20	553.10
Kentucky	7,046	100.0	8.4	8.1	11.3	12.8	12.8	11.9	9.8	7.6	17.3	593.90	573.00
Louisiana	5,836	100.0	7.5	6.5	10.6	13.3	13.5	11.5	8.9	8.8	19.6	617.20	590.00
Maine	1,165	100.0	10.6	8.9	13.6	13.7	12.9	10.4	9.9	7.6	12.4	550.30	521.00
Maryland	2,372	100.0	7.9	7.6	9.9	12.2	12.6	12.0	9.8	8.2	19.7	615.00	597.00
Massachusetts	3,318	100.0	7.9	8.7	12.1	14.8	12.3	11.6	9.7	6.6	16.3	585.00	547.00
Michigan	8,043	100.0	6.9	6.8	8.9	11.5	10.9	10.6	10.0	8.2	26.2	662.10	648.20
Minnesota	1,825	100.0	9.1	8.3	11.9	12.1	12.9	12.1	10.0	6.6	17.0	586.40	558.00
Mississippi	4,581	100.0	12.0	10.8	12.4	14.5	13.4	11.0	8.5	5.4	11.9	527.90	501.00
Missouri	5,473	100.0	11.1	9.4	11.6	13.8	12.0	10.6	9.6	7.0	14.9	560.90	531.00
Montana	592	100.0	6.4	10.3	13.7	15.7	10.3	10.0	9.5	7.1	17.1	582.90	533.00
Nebraska	822	100.0	10.2	10.8	14.2	12.3	9.9	11.6	9.0	8.4	13.6	550.30	514.50
Nevada	1,159	100.0	8.1	8.0	11.0	12.1	9.9	10.7	10.2	8.9	21.1	625.40	606.00
New Hampshire	738	100.0	12.7	11.1	12.5	12.3	11.7	9.3	8.1	7.7	14.5	546.10	507.50
New Jersey	4,137	100.0	10.3	8.0	11.4	12.5	12.2	10.6	9.2	6.7	19.2	594.80	561.00
New Mexico	1,224	100.0	7.0	8.7	10.4	13.4	13.9	12.0	9.9	7.4	17.2	600.80	573.00
New York	12,070	100.0	9.0	8.0	11.3	13.6	12.1	11.0	9.8	7.4	17.9	594.40	564.00
North Carolina	8,499	100.0	16.5	12.5	12.8	13.5	12.6	9.5	7.5	5.7	9.5	489.80	460.00
North Dakota	293	100.0	9.6	9.9	12.3	12.3	13.3	14.7	8.2	8.2	11.6	553.50	539.00
Ohio	9,232	100.0	7.4	6.8	10.3	11.8	11.5	10.7	10.6	9.0	21.9	632.70	616.60
Oklahoma	3,309	100.0	9.9	8.6	11.4	14.0	12.3	10.4	9.7	7.7	16.0	576.90	546.00
Oregon	2,027	100.0	7.4	7.4	10.3	12.5	11.7	10.3	10.1	9.3	21.2	624.10	606.00
Pennsylvania	9,813	100.0	7.6	8.0	10.0	12.0	12.4	11.3	10.1	9.1	19.4	616.40	599.00
Rhode Island	683	100.0	11.3	10.7	11.9	13.9	12.2	10.0	8.9	8.8	12.4	544.60	516.00

(Continued)

Table 17.
Percentage distribution of disabled widow(er)s, by state or other area and monthly benefit,
December 2004—Continued

State or area	Number	Percentage distribution by dollar amount of monthly benefit										Monthly benefit (dollars)	
		Total	Less than 200.00	200.00–299.90	300.00–399.90	400.00–499.90	500.00–599.90	600.00–699.90	700.00–799.90	800.00–899.90	900.00 or more	Average	Median
South Carolina	5,038	100.0	15.3	11.3	12.5	12.5	13.6	10.8	7.8	5.9	10.2	503.60	484.00
South Dakota	385	100.0	9.6	10.9	12.2	13.2	14.8	11.2	8.3	5.7	14.0	552.20	529.00
Tennessee	7,502	100.0	12.5	10.8	11.8	13.2	12.7	11.3	8.9	6.9	11.9	533.60	511.00
Texas	13,680	100.0	8.9	8.8	10.9	13.0	12.6	11.3	9.4	7.9	17.3	590.70	567.20
Utah	712	100.0	7.2	8.0	10.8	13.9	12.1	9.8	10.1	6.9	21.2	620.50	580.00
Vermont	444	100.0	10.8	12.6	10.4	14.0	14.0	12.4	8.3	6.3	11.3	531.70	512.00
Virginia	5,612	100.0	10.8	8.7	11.4	13.3	11.9	11.1	9.1	7.4	16.2	573.80	550.00
Washington	3,061	100.0	6.5	7.5	10.8	11.3	11.6	12.4	10.1	8.2	21.5	632.40	616.00
West Virginia	3,695	100.0	5.8	6.7	9.0	11.9	12.0	12.5	10.5	9.4	22.1	648.60	634.00
Wisconsin	2,695	100.0	9.6	8.6	9.7	12.6	12.9	12.2	8.8	8.1	17.4	590.70	570.00
Wyoming	235	100.0	8.1	6.8	11.9	18.3	9.8	14.9	8.5	6.0	15.7	580.50	565.00
Outlying areas													
American Samoa	53	100.0	15.1	9.4	17.0	17.0	15.1	11.3	a	a	a	458.40	436.00
Guam	34	100.0	a	a	a	26.5	a	a	0	a	a	518.00	462.60
Northern Mariana Islands	5	100.0	0	a	a	0	a	0	0	0	a	514.80	379.00
Puerto Rico	5,095	100.0	11.2	13.5	14.5	17.9	14.7	10.4	7.4	4.5	5.8	479.30	454.20
Virgin Islands	64	100.0	a	a	a	18.8	18.8	a	a	10.9	12.5	624.70	598.20
Foreign countries	752	100.0	8.1	5.7	10.8	16.1	16.2	10.8	10.8	8.5	13.0	582.40	562.00

SOURCE: Social Security Administration, Disabled Beneficiaries and Dependents Master Beneficiary Record file, 100 percent data.

a. Data not shown to avoid disclosure of information for particular individuals.

CONTACT: Kevin Kulzer (410) 965-5366 or di.asr@ssa.gov.

All Disabled Beneficiaries

Table 18.
Percentage distribution of disabled adult children, by state or other area and monthly benefit,
December 2004

State or area	Number	Percentage distribution by dollar amount of monthly benefit										Monthly benefit (dollars)	
		Total	Less than 200.00	200.00–299.90	300.00–399.90	400.00–499.90	500.00–599.90	600.00–699.90	700.00–799.90	800.00–899.90	900.00 or more	Average	Median
All areas	759,254	100.0	5.9	6.0	13.2	14.0	13.8	14.9	11.9	8.2	12.0	587.60	579.10
Alabama	17,145	100.0	7.1	7.4	17.4	16.6	14.4	13.1	9.6	6.3	8.0	534.80	510.00
Alaska	748	100.0	7.1	7.8	13.1	13.5	12.0	13.8	11.2	7.5	14.0	584.50	572.50
Arizona	8,911	100.0	5.8	5.9	11.1	13.6	13.2	15.1	12.9	8.6	13.8	604.90	602.20
Arkansas	9,176	100.0	7.9	7.4	17.7	17.7	15.0	13.0	9.3	5.5	6.5	519.20	495.00
California	63,192	100.0	5.9	5.8	11.4	12.9	13.6	15.1	12.7	8.8	13.8	606.10	602.00
Colorado	5,849	100.0	5.6	5.5	11.7	13.9	13.9	15.3	12.3	8.9	13.0	600.70	595.00
Connecticut	9,475	100.0	4.1	4.3	8.9	10.2	12.6	17.6	14.9	10.4	17.0	654.20	662.00
Delaware	1,943	100.0	3.1	3.5	11.0	12.7	14.3	18.3	12.6	9.7	14.8	632.80	633.20
District of Columbia	1,300	100.0	7.8	7.5	18.6	18.4	14.2	12.2	9.5	5.2	6.6	518.70	491.00
Florida	34,069	100.0	6.1	6.0	12.1	14.4	14.6	15.2	12.1	8.0	11.5	586.20	577.00
Georgia	20,249	100.0	5.9	6.6	17.6	17.0	15.1	13.3	9.7	6.3	8.5	545.30	519.20
Hawaii	2,338	100.0	4.5	5.3	13.4	13.0	15.5	16.4	12.6	8.9	10.3	593.70	590.10
Idaho	2,628	100.0	6.1	5.3	11.1	13.9	16.1	15.8	12.9	7.5	11.4	591.10	584.50
Illinois	32,159	100.0	4.4	4.7	10.2	11.9	12.9	16.3	13.4	10.1	16.1	636.90	640.00
Indiana	17,166	100.0	3.6	4.1	9.6	12.0	13.8	17.7	14.2	10.0	15.0	637.70	644.00
Iowa	8,585	100.0	4.2	4.5	10.2	14.7	15.0	16.7	12.8	9.7	12.4	613.90	607.00
Kansas	6,095	100.0	4.0	4.6	11.1	14.0	14.9	16.1	13.4	9.6	12.3	614.10	611.00
Kentucky	16,400	100.0	8.0	8.3	17.8	16.4	13.2	12.6	9.5	6.0	8.1	527.00	497.00
Louisiana	18,395	100.0	8.6	8.4	16.4	16.3	13.5	12.4	8.8	6.2	9.5	533.40	502.00
Maine	4,596	100.0	7.5	5.9	13.0	16.8	15.8	14.7	11.7	6.9	7.6	551.60	538.00
Maryland	10,886	100.0	3.8	4.7	11.8	12.9	14.6	15.7	13.2	8.5	14.7	621.10	616.20
Massachusetts	17,978	100.0	5.7	5.6	11.5	12.8	13.7	15.1	12.9	9.5	13.2	606.90	605.00
Michigan	33,233	100.0	3.8	3.8	8.4	10.7	12.8	16.5	15.3	10.9	17.9	658.90	668.00
Minnesota	11,544	100.0	4.4	4.3	11.7	14.1	13.8	16.5	12.9	9.4	12.8	612.50	612.00
Mississippi	11,806	100.0	9.0	9.9	21.5	17.0	13.6	10.8	7.2	4.9	6.1	489.90	454.00
Missouri	16,213	100.0	5.9	5.5	13.1	14.8	14.2	14.9	12.1	8.1	11.5	585.50	576.00
Montana	2,168	100.0	4.0	4.8	11.9	15.6	15.0	16.1	12.5	8.9	11.3	599.80	595.00
Nebraska	4,217	100.0	4.8	4.9	12.4	15.2	16.1	15.8	11.9	7.8	11.2	591.20	578.20
Nevada	2,616	100.0	4.5	5.1	10.0	12.4	13.4	14.8	13.1	9.9	17.0	635.80	633.20
New Hampshire	2,810	100.0	4.7	4.3	9.5	13.6	14.6	16.1	15.3	9.7	12.2	619.50	625.00
New Jersey	19,949	100.0	3.7	4.0	9.4	10.7	12.9	16.5	14.6	10.8	17.5	657.30	662.00
New Mexico	4,370	100.0	8.8	8.3	16.7	15.7	14.6	12.5	8.8	6.4	8.3	527.10	504.00
New York	56,567	100.0	4.2	4.5	10.5	12.4	13.4	16.5	13.9	10.0	14.6	630.80	633.20
North Carolina	23,493	100.0	5.6	6.6	17.6	17.4	15.4	13.5	10.1	6.2	7.6	542.20	515.20
North Dakota	2,020	100.0	4.9	5.6	14.2	17.1	15.5	16.7	9.9	7.4	8.8	568.40	552.00
Ohio	35,214	100.0	4.6	4.8	10.7	12.2	13.6	16.4	13.2	9.7	14.7	623.20	628.00
Oklahoma	9,236	100.0	5.9	6.2	15.1	15.7	14.9	14.1	11.2	7.3	9.7	564.40	545.00
Oregon	7,234	100.0	4.6	4.6	9.4	12.3	13.8	17.4	13.2	10.5	14.1	627.60	633.00
Pennsylvania	39,224	100.0	4.7	4.5	10.1	12.8	14.1	17.4	13.4	9.3	13.7	620.40	624.00
Rhode Island	3,118	100.0	5.4	6.1	12.1	13.3	14.2	16.1	11.5	9.5	11.8	595.70	592.00

(Continued)

Table 18.
Percentage distribution of disabled adult children, by state or other area and monthly benefit,
December 2004—Continued

State or area	Number	Percentage distribution by dollar amount of monthly benefit										Monthly benefit (dollars)	
		Total	Less than 200.00	200.00–299.90	300.00–399.90	400.00–499.90	500.00–599.90	600.00–699.90	700.00–799.90	800.00–899.90	900.00 or more	Average	Median
South Carolina	13,342	100.0	5.5	6.7	16.8	17.6	15.6	13.7	9.9	6.6	7.7	544.10	517.10
South Dakota	2,078	100.0	5.9	5.8	15.4	18.1	15.7	14.1	10.8	6.2	8.0	550.30	526.10
Tennessee	18,573	100.0	6.2	6.5	17.5	16.7	14.9	13.8	9.6	6.4	8.3	544.10	520.00
Texas	41,280	100.0	7.0	7.0	15.2	15.4	14.1	13.4	10.2	7.1	10.7	560.50	537.00
Utah	3,395	100.0	5.2	5.2	9.7	13.0	14.0	17.1	13.3	8.9	13.5	616.70	619.20
Vermont	1,884	100.0	5.0	5.1	13.2	15.4	18.1	14.5	12.5	7.2	8.9	574.50	565.00
Virginia	17,307	100.0	5.7	6.1	15.5	16.1	14.5	14.5	10.6	7.2	9.7	564.10	544.20
Washington	11,852	100.0	4.4	4.6	9.8	11.8	13.2	16.1	14.3	10.4	15.4	636.30	644.00
West Virginia	9,986	100.0	7.1	6.7	15.5	15.7	14.2	15.6	10.2	6.5	8.7	549.30	536.00
Wisconsin	15,889	100.0	4.0	4.1	9.9	12.6	13.8	17.9	14.0	9.8	13.9	628.40	636.00
Wyoming	887	100.0	4.4	4.3	9.5	15.7	14.3	15.2	12.5	7.8	16.3	627.20	612.00
Outlying areas													
American Samoa													
	101	100.0	11.9	18.8	a	16.8	15.8	a	a	a	a	410.00	388.00
Guam													
	130	100.0	20.8	14.6	24.6	15.4	a	5.4	a	a	6.2	401.20	355.70
Northern Mariana Islands													
	45	100.0	40.0	22.2	a	13.3	a	a	a	a	a	312.60	260.00
Puerto Rico													
	22,823	100.0	17.1	16.6	29.8	16.7	8.8	5.2	2.9	1.6	1.3	372.40	347.00
Virgin Islands													
	304	100.0	7.6	7.9	18.1	21.7	17.1	12.5	8.2	a	a	493.50	480.10
Foreign countries													
	5,063	100.0	17.3	13.6	19.5	15.0	11.4	10.4	5.9	2.9	4.0	427.90	396.00

SOURCE: Social Security Administration, Disabled Beneficiaries and Dependents Master Beneficiary Record file, 100 percent data.

a. Data not shown to avoid disclosure of information for particular individuals.

CONTACT: Kevin Kulzer (410) 965-5366 or di.asr@ssa.gov.

Disabled Workers

Table 19.
Percentage distribution, by sex and age, December 1960–2004

Year	Number (thousands)	Percentage distribution									Average age
		Total, all ages	Under 30	30–34	35–39 ^a	40–44	45–49	50–54	55–59	60–FRA	
All disabled workers											
1996	4,400	100.0	3.6	5.6	9.0	11.6	13.8	15.5	18.6	22.4	50.0
1997	4,508	100.0	3.2	5.1	8.6	11.6	13.7	16.1	19.2	22.4	50.3
1998	4,699	100.0	3.0	4.8	8.3	11.6	13.8	16.5	19.7	22.4	50.5
1999	4,879	100.0	2.8	4.4	8.0	11.5	14.0	17.0	20.0	22.3	50.6
2000	5,042	100.0	2.7	4.1	7.6	11.4	14.1	17.6	20.3	22.3	50.8
2001	5,268	100.0	2.8	4.0	7.2	11.1	14.1	17.7	20.7	22.4	50.9
2002	5,540	100.0	3.0	3.8	6.7	10.8	14.1	17.5	21.3	22.7	51.0
2003	5,869	100.0	3.1	3.7	6.3	10.4	14.0	17.3	21.5	23.7	51.3
2004	6,197	100.0	3.1	3.6	5.9	10.0	13.8	17.2	21.8	24.5	51.5
Men											
1960	356	100.0	0.5	a	3.3	3.0	4.9	16.6	26.7	44.9	57.3
1965	734	100.0	1.0	a	7.5	7.6	10.4	15.4	24.7	33.3	54.4
1970	1,069	100.0	3.3	a	6.8	6.9	10.9	15.2	23.2	33.7	53.9
1975	1,711	100.0	4.6	a	7.5	6.2	9.7	15.8	23.2	33.0	53.5
1980	1,928	100.0	4.1	a	9.6	6.0	8.9	14.3	24.0	33.1	52.9
1981	--	--	--	--	--	--	--	--	--	--	--
1982	1,746	100.0	4.0	a	9.7	5.8	7.8	13.6	23.6	35.5	53.2
1983	1,731	100.0	4.2	a	10.4	6.3	8.0	13.0	23.1	35.0	52.9
1984	1,748	100.0	4.4	a	11.3	6.8	8.3	12.8	22.2	34.2	52.5
1985	1,785	100.0	4.6	a	12.3	7.3	8.6	12.9	21.4	32.9	51.9
1986	1,827	100.0	4.9	a	13.3	7.9	8.9	12.7	20.7	31.5	51.4
1987	1,857	100.0	4.8	a	13.8	8.5	9.4	12.5	20.1	30.8	51.1
1988	1,869	100.0	4.7	a	14.3	9.0	9.8	12.7	19.6	29.9	50.9
1989	1,906	100.0	4.5	a	14.7	9.6	10.3	12.7	19.4	28.8	50.7
1990	1,965	100.0	4.5	a	15.2	10.3	10.7	12.7	19.1	27.5	50.4
1991	2,066	100.0	4.5	a	15.6	10.7	11.2	13.0	18.6	26.4	50.1
1992	2,221	100.0	4.6	a	16.0	11.0	12.0	13.4	18.0	25.0	49.9
1993	2,358	100.0	4.6	a	16.2	11.2	12.3	13.9	17.9	23.9	49.6
1994	2,476	100.0	4.3	a	16.1	11.4	12.8	14.2	17.8	23.4	49.6
1995	2,573	100.0	4.0	a	15.5	11.5	13.4	14.5	18.0	23.2	49.7
1996	2,653	100.0	3.7	5.7	9.2	11.6	13.7	15.0	18.3	22.9	50.0
1997	2,667	100.0	3.3	5.2	8.7	11.6	13.6	15.6	18.9	23.0	50.3
1998	2,737	100.0	3.1	4.8	8.4	11.6	13.7	16.1	19.3	23.0	50.5
1999	2,801	100.0	2.8	4.5	8.1	11.6	13.8	16.7	19.7	22.9	50.7
2000	2,856	100.0	2.8	4.2	7.6	11.4	13.9	17.3	20.0	22.8	50.8
2001	2,948	100.0	2.9	4.0	7.2	11.2	14.0	17.5	20.5	23.0	51.0
2002	3,067	100.0	3.1	3.8	6.7	10.8	14.0	17.3	21.1	23.2	51.1
2003	3,221	100.0	3.2	3.6	6.3	10.4	13.9	17.1	21.4	24.1	51.3
2004	3,373	100.0	3.2	3.4	5.8	10.0	13.7	17.0	21.9	25.0	51.6

(Continued)

Table 19.
Percentage distribution, by sex and age, December 1960–2004—Continued

Year	Number (thousands)	Percentage distribution									Average age
		Total, all ages	Under 30	30–34	35–39 ^a	40–44	45–49	50–54	55–59	60–FRA	
Women											
1960	99	100.0	0.3	a	3.2	3.2	5.3	19.4	31.4	37.2	56.7
1965	254	100.0	0.6	a	5.4	6.3	9.8	16.2	27.3	34.3	55.2
1970	424	100.0	1.9	a	5.1	5.6	10.1	15.9	26.0	35.3	55.0
1975	778	100.0	3.3	a	6.1	5.3	9.0	16.3	25.5	34.5	54.4
1980	931	100.0	3.4	a	8.2	5.3	8.2	14.4	25.4	35.0	53.7
1981	--	--	--	--	--	--	--	--	--	--	--
1982	858	100.0	3.3	a	8.5	5.1	7.2	13.7	25.2	37.0	53.9
1983	838	100.0	3.5	a	9.3	5.7	7.5	12.9	24.3	36.8	53.6
1984	849	100.0	3.7	a	10.2	6.3	7.8	12.8	23.2	36.0	53.2
1985	872	100.0	3.8	a	11.2	6.9	8.3	12.9	22.3	34.6	52.6
1986	902	100.0	4.1	a	12.1	7.6	8.8	12.9	21.6	32.9	52.0
1987	929	100.0	4.2	a	12.7	8.2	9.4	12.9	20.9	31.7	51.7
1988	952	100.0	4.0	a	13.1	8.7	9.9	13.2	20.6	30.5	51.4
1989	989	100.0	4.0	a	13.5	9.2	10.6	13.4	20.1	29.2	51.1
1990	1,046	100.0	3.9	a	14.0	9.8	11.1	13.4	19.9	27.9	50.8
1991	1,133	100.0	4.0	a	14.3	10.3	11.6	13.8	19.4	26.5	50.5
1992	1,252	100.0	4.3	a	14.6	10.7	12.2	14.3	18.8	25.0	50.1
1993	1,371	100.0	4.3	a	14.9	11.0	12.6	14.8	18.9	23.5	49.9
1994	1,491	100.0	4.1	a	14.8	11.2	13.1	15.3	18.7	22.8	49.9
1995	1,614	100.0	3.8	a	14.5	11.5	13.6	15.7	18.8	22.2	49.9
1996	1,747	100.0	3.5	5.4	8.7	11.6	13.9	16.2	19.1	21.7	50.1
1997	1,842	100.0	3.1	5.0	8.4	11.6	13.9	16.7	19.6	21.5	50.3
1998	1,961	100.0	2.9	4.7	8.2	11.5	14.0	17.0	20.1	21.5	50.5
1999	2,078	100.0	2.7	4.3	7.9	11.5	14.2	17.5	20.5	21.4	50.6
2000	2,186	100.0	2.7	4.1	7.5	11.3	14.3	17.9	20.7	21.6	50.8
2001	2,320	100.0	2.8	4.0	7.1	11.1	14.3	18.0	21.1	21.7	50.9
2002	2,472	100.0	2.9	3.9	6.8	10.8	14.3	17.7	21.5	22.1	51.0
2003	2,647	100.0	3.0	3.8	6.4	10.5	14.2	17.6	21.6	23.0	51.2
2004	2,824	100.0	3.0	3.7	6.0	10.2	14.0	17.5	21.8	23.8	51.4

SOURCES: Social Security Administration, *Annual Statistical Supplement* to the *Social Security Bulletin*, Table 5.D4 from 1960 to 1995; data for 1988 and 1990 to 1995 are based on a 10 percent sample file from the Master Beneficiary Record; Social Security Disability Insurance Beneficiaries, 100 percent data, from 1996 to 2000; beginning with 2001, Disabled Beneficiaries and Dependents Master Beneficiary Record file, 100 percent data.

NOTES: Combined data for men and women are not available before 1996.

FRA = full retirement age; -- = not available.

a. Ages 30–34 were grouped with ages 35–39 before 1996.

CONTACT: Kevin Kulzer (410) 965-5366 or di.asr@ssa.gov.

Disabled Workers

Table 20.
Number, average primary insurance amount, and average monthly benefit, by age and sex,
December 2004

Age	Total			Men			Women		
	Number	Average PIA (dollars)	Average monthly benefit (dollars)	Number	Average PIA (dollars)	Average monthly benefit (dollars)	Number	Average PIA (dollars)	Average monthly benefit (dollars)
All disabled workers	6,197,385	899.40	894.10	3,373,226	1,011.10	1,002.30	2,824,159	766.10	765.00
Under 25	56,628	471.10	484.30	33,171	481.70	493.90	23,457	456.10	470.60
25-29	137,007	582.60	588.40	75,628	595.50	599.40	61,379	566.60	574.70
30-34	220,035	665.00	666.90	116,288	684.20	682.30	103,747	643.60	649.70
35-39	366,275	732.80	731.10	196,696	756.60	750.40	169,579	705.30	708.60
40-44	622,504	791.80	787.30	335,816	833.30	824.30	286,688	743.20	743.90
45-49	857,014	858.40	851.30	462,455	929.00	917.20	394,559	775.70	774.00
50-54	1,068,229	924.40	916.70	573,424	1,030.20	1,018.40	494,805	801.70	798.90
55-59	1,353,782	979.80	972.70	737,303	1,127.40	1,117.10	616,479	803.40	800.00
60-64	1,434,690	997.40	992.60	796,427	1,176.10	1,168.70	638,263	774.50	772.80
65-FRA	81,221	977.50	973.20	46,018	1,155.10	1,147.70	35,203	745.50	745.00

SOURCE: Social Security Administration, Disabled Beneficiaries and Dependents Master Beneficiary Record file, 100 percent data.

NOTES: The average monthly benefit includes secondary benefit amounts for some beneficiaries who are dually entitled. This results in the average monthly benefit being larger than the average PIA for some age groups.

PIA = primary insurance amount; FRA = full retirement age.

CONTACT: Kevin Kulzer (410) 965-5366 or di.asr@ssa.gov.

Table 21.
Distribution, by diagnostic group, 1996–2004

Year	Total	Congenital anomalies	Endocrine, nutritional, and metabolic diseases	Infectious and parasitic diseases ^a	Injuries	Mental disorders			Neoplasms
						Total	Retardation	Other	
Number									
1996	4,399,932	9,023	197,272	87,066	213,772	1,356,310	228,131	1,128,179	124,018
1997	4,508,406	8,813	215,186	90,175	217,882	1,381,178	235,130	1,146,048	122,775
1998	4,698,560	8,719	233,724	93,776	224,388	1,459,118	243,745	1,215,373	127,174
1999	4,879,454	8,546	251,998	96,132	228,800	1,532,155	249,871	1,282,284	131,492
2000	5,042,333	8,540	244,456	97,919	231,066	1,618,758	257,601	1,361,157	136,404
2001	5,268,039	8,752	239,614	100,442	240,948	1,731,886	273,849	1,458,037	142,795
2002	5,539,597	9,226	237,020	102,589	248,544	1,845,138	286,210	1,558,928	150,138
2003	5,868,541	9,750	242,517	106,767	260,572	1,961,090	298,500	1,662,590	160,986
2004	6,197,385	10,392	247,559	110,178	271,626	2,075,867	310,240	1,765,627	172,844
Percent									
1996	100.0	0.2	4.5	2.0	4.9	30.8	5.2	25.6	2.8
1997	100.0	0.2	4.8	2.0	4.8	30.6	5.2	25.4	2.7
1998	100.0	0.2	5.0	2.0	4.8	31.1	5.2	25.9	2.7
1999	100.0	0.2	5.2	2.0	4.7	31.4	5.1	26.3	2.7
2000	100.0	0.2	4.8	1.9	4.6	32.1	5.1	27.0	2.7
2001	100.0	0.2	4.5	1.9	4.6	32.9	5.2	27.7	2.7
2002	100.0	0.2	4.3	1.9	4.5	33.3	5.2	28.1	2.7
2003	100.0	0.2	4.1	1.8	4.4	33.4	5.1	28.3	2.7
2004	100.0	0.2	4.0	1.8	4.4	33.5	5.0	28.5	2.8

(Continued)

Disabled Workers

Table 21.
Distribution, by diagnostic group, 1996–2004—Continued

Year	Diseases of the—								Other	Unknown ^b
	Blood and blood-forming organs	Circulatory system	Digestive system	Genitourinary system	Musculoskeletal system and connective tissue	Nervous system and sense organs	Respiratory system	Skin and subcutaneous tissue		
Number										
1996	10,539	517,503	54,585	65,425	906,882	404,618	152,217	10,818	85,115	204,769
1997	10,926	522,047	57,383	69,300	962,915	420,755	155,028	11,267	95,708	167,068
1998	11,349	526,573	61,541	74,888	1,024,053	441,016	159,869	11,826	110,377	130,169
1999	11,687	528,627	65,887	79,524	1,086,432	460,133	162,863	12,151	117,326	105,701
2000	12,070	532,998	69,735	84,687	1,152,231	479,246	166,054	12,351	113,167	82,651
2001	12,847	543,516	74,680	88,949	1,231,184	505,162	170,383	12,787	113,558	50,536
2002	13,708	558,736	80,396	93,645	1,324,762	533,774	176,941	13,429	9,447	142,104
2003	14,711	579,778	87,721	98,491	1,430,357	565,244	185,834	14,133	10,705	139,885
2004	15,596	600,144	94,566	103,427	1,540,566	596,369	194,592	14,963	12,038	136,658
Percent										
1996	0.2	11.8	1.2	1.5	20.6	9.2	3.5	0.2	1.9	4.7
1997	0.2	11.6	1.3	1.5	21.4	9.3	3.4	0.2	2.1	3.7
1998	0.2	11.2	1.3	1.6	21.8	9.4	3.4	0.3	2.3	2.8
1999	0.2	10.8	1.4	1.6	22.3	9.4	3.3	0.2	2.4	2.2
2000	0.2	10.6	1.4	1.7	22.9	9.5	3.3	0.2	2.2	1.6
2001	0.2	10.3	1.4	1.7	23.4	9.6	3.2	0.2	2.2	1.0
2002	0.2	10.1	1.5	1.7	23.9	9.6	3.2	0.2	0.2	2.6
2003	0.3	9.9	1.5	1.7	24.4	9.6	3.2	0.2	0.2	2.4
2004	0.3	9.7	1.5	1.7	24.9	9.6	3.1	0.2	0.2	2.2

SOURCES: Social Security Administration, Social Security Disability Insurance Beneficiaries, 100 percent data, from 1996 to 2000; beginning with 2001, Disabled Beneficiaries and Dependents Master Beneficiary Record file, 100 percent data.

- a. AIDS and HIV records are counted in "Infectious and parasitic diseases." Before 1990, they were included in "Other."
 b. Beginning with 2002 data, several ill-defined impairment codes were reclassified and added to "Unknown."

CONTACT: Kevin Kulzer (410) 965-5366 or di.asr@ssa.gov.

Table 22.
Distribution of workers under age 50, by diagnostic group, 1996–2004

Year	Total	Congenital anomalies	Endocrine, nutritional, and metabolic diseases	Infectious and parasitic diseases ^a	Injuries	Mental disorders			Neoplasms
						Total	Retardation	Other	
Number									
1996	1,917,424	4,782	76,546	63,819	110,910	865,928	164,041	701,887	41,232
1997	1,908,103	4,570	80,950	65,212	110,461	852,279	167,052	685,227	39,783
1998	1,949,052	4,503	85,500	66,208	111,266	874,231	170,694	703,537	40,638
1999	1,986,422	4,494	89,365	66,245	111,502	891,469	172,232	719,237	41,799
2000	2,012,615	4,619	80,869	65,695	110,125	912,048	174,759	737,289	42,656
2001	2,066,094	4,883	74,292	65,047	112,969	961,757	183,934	777,823	44,537
2002	2,132,996	5,290	69,229	64,075	113,785	1,005,189	190,646	814,543	45,994
2003	2,204,785	5,696	68,422	64,376	115,634	1,043,928	196,420	847,508	48,126
2004	2,259,463	6,157	66,669	63,593	116,155	1,077,329	201,594	875,735	49,957
Percent									
1996	100.0	0.2	4.0	3.3	5.8	45.2	8.6	36.6	2.2
1997	100.0	0.2	4.2	3.4	5.8	44.7	8.8	35.9	2.1
1998	100.0	0.2	4.4	3.4	5.7	44.9	8.8	36.1	2.1
1999	100.0	0.2	4.5	3.3	5.6	44.9	8.7	36.2	2.1
2000	100.0	0.2	4.0	3.3	5.5	45.3	8.7	36.6	2.1
2001	100.0	0.2	3.6	3.1	5.5	46.5	8.9	37.6	2.2
2002	100.0	0.2	3.2	3.0	5.3	47.1	8.9	38.2	2.2
2003	100.0	0.3	3.1	2.9	5.2	47.3	8.9	38.4	2.2
2004	100.0	0.3	3.0	2.8	5.1	47.7	8.9	38.8	2.2

(Continued)

Disabled Workers

Table 22.
Distribution of workers under age 50, by diagnostic group, 1996–2004—Continued

Year	Diseases of the—								Other	Unknown ^b
	Blood and blood-forming organs	Circulatory system	Digestive system	Genitourinary system	Musculoskeletal system and connective tissue	Nervous system and sense organs	Respiratory system	Skin and subcutaneous tissue		
Number										
1996	6,711	86,607	24,535	36,214	265,043	202,169	24,862	4,926	37,745	65,395
1997	6,809	85,953	25,428	37,896	271,682	204,222	24,750	5,140	43,124	49,844
1998	6,991	84,674	27,219	39,949	284,291	208,607	25,822	5,314	50,140	33,699
1999	7,103	83,736	29,109	41,571	297,185	211,731	26,226	5,467	51,848	27,572
2000	7,245	84,362	30,357	43,333	309,327	215,744	26,718	5,785	53,437	20,595
2001	7,646	85,819	31,789	44,628	322,713	221,321	27,472	5,613	44,428	11,180
2002	8,072	87,860	33,120	45,957	340,244	228,658	28,441	5,843	4,060	47,179
2003	8,513	90,085	34,722	47,143	355,306	235,860	29,996	5,966	4,496	46,516
2004	8,855	91,227	35,859	48,231	367,251	242,252	30,883	6,231	4,951	43,863
Percent										
1996	0.4	4.5	1.3	1.9	13.8	10.5	1.3	0.3	2.0	3.4
1997	0.4	4.5	1.3	2.0	14.2	10.7	1.3	0.3	2.3	2.6
1998	0.4	4.3	1.4	2.0	14.6	10.7	1.3	0.3	2.6	1.7
1999	0.4	4.2	1.5	2.1	15.0	10.7	1.3	0.3	2.6	1.4
2000	0.4	4.2	1.5	2.2	15.4	10.7	1.3	0.3	2.7	1.0
2001	0.4	4.2	1.5	2.2	15.6	10.7	1.3	0.3	2.2	0.5
2002	0.4	4.1	1.6	2.2	16.0	10.7	1.3	0.3	0.2	2.2
2003	0.4	4.1	1.6	2.1	16.1	10.7	1.4	0.3	0.2	2.1
2004	0.4	4.0	1.6	2.1	16.3	10.7	1.4	0.3	0.2	1.9

SOURCES: Social Security Administration, Social Security Disability Insurance Beneficiaries, 100 percent data, from 1996 to 2000; beginning with 2001, Disabled Beneficiaries and Dependents Master Beneficiary Record file, 100 percent data.

- a. AIDS and HIV records are counted in "Infectious and parasitic diseases." Before 1990, they were included in "Other."
- b. Beginning with 2002 data, several ill-defined impairment codes were reclassified and added to "Unknown."

CONTACT: Kevin Kulzer (410) 965-5366 or di.asr@ssa.gov.

Table 23.
Distribution of workers aged 50 or older, by diagnostic group, 1996–2004

Year	Total	Congenital anomalies	Endocrine, nutritional, and metabolic diseases	Infectious and parasitic diseases ^a	Injuries	Mental disorders			Neoplasms
						Total	Retardation	Other	
Number									
1996	2,482,508	4,241	120,726	23,247	102,862	490,382	64,090	426,292	82,786
1997	2,600,303	4,243	134,236	24,963	107,421	528,899	68,078	460,821	82,992
1998	2,749,508	4,216	148,224	27,568	113,122	584,887	73,051	511,836	86,536
1999	2,893,032	4,052	162,633	29,887	117,298	640,686	77,639	563,047	89,693
2000	3,029,718	3,921	163,587	32,224	120,941	697,278	82,842	614,436	93,748
2001	3,201,945	3,869	165,322	35,395	127,979	770,129	89,915	680,214	98,258
2002	3,406,601	3,936	167,791	38,514	134,759	839,949	95,564	744,385	104,144
2003	3,663,756	4,054	174,095	42,391	144,938	917,162	102,080	815,082	112,860
2004	3,937,922	4,235	180,890	46,585	155,471	998,538	108,646	889,892	122,887
Percent									
1996	100.0	0.2	4.9	0.9	4.1	19.8	2.6	17.2	3.3
1997	100.0	0.2	5.2	1.0	4.1	20.3	2.6	17.7	3.2
1998	100.0	0.2	5.4	1.0	4.1	21.3	2.7	18.6	3.1
1999	100.0	0.1	5.6	1.0	4.1	22.2	2.7	19.5	3.1
2000	100.0	0.1	5.4	1.1	4.0	23.0	2.7	20.3	3.1
2001	100.0	0.1	5.2	1.1	4.0	24.0	2.8	21.2	3.1
2002	100.0	0.1	4.9	1.1	4.0	24.7	2.8	21.9	3.1
2003	100.0	0.1	4.8	1.2	4.0	25.0	2.8	22.2	3.1
2004	100.0	0.1	4.6	1.2	3.9	25.4	2.8	22.6	3.1

(Continued)

Disabled Workers

Table 23.
Distribution of workers aged 50 or older, by diagnostic group, 1996–2004—Continued

Year	Diseases of the—								Other	Unknown ^b
	Blood and blood-forming organs	Circulatory system	Digestive system	Genitourinary system	Musculoskeletal system and connective tissue	Nervous system and sense organs	Respiratory system	Skin and subcutaneous tissue		
Number										
1996	3,828	430,896	30,050	29,211	641,839	202,449	127,355	5,892	47,370	139,374
1997	4,117	436,094	31,955	31,404	691,233	216,533	130,278	6,127	52,584	117,224
1998	4,358	441,899	34,322	34,939	739,762	232,409	134,047	6,512	60,237	96,470
1999	4,584	444,891	36,778	37,953	789,247	248,402	136,637	6,684	65,478	78,129
2000	4,825	448,636	39,378	41,354	842,904	263,502	139,336	6,866	69,162	62,056
2001	5,201	457,697	42,891	44,321	908,471	283,841	142,911	7,174	69,130	39,356
2002	5,636	470,876	47,276	47,688	984,518	305,116	148,500	7,586	5,387	94,925
2003	6,198	489,693	52,999	51,348	1,075,051	329,384	155,838	8,167	6,209	93,369
2004	6,741	508,917	58,707	55,196	1,173,315	354,117	163,709	8,732	7,087	92,795
Percent										
1996	0.2	17.4	1.2	1.2	25.9	8.2	5.1	0.2	1.9	5.6
1997	0.2	16.8	1.2	1.2	26.6	8.3	5.0	0.2	2.0	4.5
1998	0.2	16.1	1.2	1.3	26.9	8.5	4.9	0.2	2.2	3.5
1999	0.2	15.4	1.3	1.3	27.3	8.6	4.7	0.2	2.3	2.7
2000	0.2	14.8	1.3	1.4	27.8	8.7	4.6	0.2	2.3	2.0
2001	0.2	14.3	1.3	1.4	28.4	8.9	4.5	0.2	2.2	1.2
2002	0.2	13.8	1.4	1.4	28.9	9.0	4.4	0.2	0.2	2.8
2003	0.2	13.4	1.4	1.4	29.3	9.0	4.3	0.2	0.2	2.5
2004	0.2	12.9	1.5	1.4	29.8	9.0	4.2	0.2	0.2	2.4

SOURCES: Social Security Administration, Social Security Disability Insurance Beneficiaries, 100 percent data, from 1996 to 2000; beginning with 2001, Disabled Beneficiaries and Dependents Master Beneficiary Record file, 100 percent data.

a. AIDS and HIV records are counted in "Infectious and parasitic diseases." Before 1990, they were included in "Other."

b. Beginning with 2002, several ill-defined impairment codes were reclassified and added to "Unknown."

CONTACT: Kevin Kulzer (410) 965-5366 or di.asr@ssa.gov.

Table 24.
Distribution, by diagnostic group and age, December 2004

Diagnostic group	Total	Under 30	30–39	40–49	50–59	60–FRA
	<i>Number</i>					
Total	6,197,385	193,635	586,310	1,479,518	2,422,011	1,515,911
Congenital anomalies	10,392	1,545	2,043	2,569	2,715	1,520
Endocrine, nutritional, and metabolic diseases	247,559	2,883	14,683	49,103	109,747	71,143
Infectious and parasitic diseases	110,178	1,778	17,597	44,218	35,006	11,579
Injuries	271,626	10,925	32,327	72,903	97,719	57,752
Mental disorders						
Retardation	310,240	36,455	67,833	97,306	81,459	27,187
Other	1,765,627	88,844	244,350	542,541	647,991	241,901
Neoplasms	172,844	4,356	11,517	34,084	71,663	51,224
Diseases of the—						
Blood and blood-forming organs	15,596	1,990	2,818	4,047	4,469	2,272
Circulatory system	600,144	3,341	16,238	71,648	254,627	254,290
Digestive system	94,566	1,925	7,571	26,363	40,634	18,073
Genitourinary system	103,427	4,591	15,135	28,505	37,721	17,475
Musculoskeletal system and connective tissue	1,540,566	8,039	67,900	291,312	663,507	509,808
Nervous system and sense organs	596,369	22,230	67,942	152,080	226,766	127,351
Respiratory system	194,592	1,271	5,580	24,032	79,842	83,867
Skin and subcutaneous tissue	14,963	417	1,618	4,196	5,750	2,982
Other	12,038	470	1,256	3,225	4,625	2,462
Unknown	136,658	2,575	9,902	31,386	57,770	35,025
	<i>Percent</i>					
Total	100.0	100.0	100.0	100.0	100.0	100.0
Congenital anomalies	0.2	0.8	0.3	0.2	0.1	0.1
Endocrine, nutritional, and metabolic diseases	4.0	1.5	2.5	3.3	4.5	4.7
Infectious and parasitic diseases	1.8	0.9	3.0	3.0	1.4	0.8
Injuries	4.4	5.6	5.5	4.9	4.0	3.8
Mental disorders						
Retardation	5.0	18.8	11.6	6.6	3.4	1.8
Other	28.5	45.9	41.7	36.7	26.8	16.0
Neoplasms	2.8	2.2	2.0	2.3	3.0	3.4
Diseases of the—						
Blood and blood-forming organs	0.3	1.0	0.5	0.3	0.2	0.1
Circulatory system	9.7	1.7	2.8	4.8	10.5	16.8
Digestive system	1.5	1.0	1.3	1.8	1.7	1.2
Genitourinary system	1.7	2.4	2.6	1.9	1.6	1.2
Musculoskeletal system and connective tissue	24.9	4.2	11.6	19.7	27.4	33.6
Nervous system and sense organs	9.6	11.5	11.6	10.3	9.4	8.4
Respiratory system	3.1	0.7	1.0	1.6	3.3	5.5
Skin and subcutaneous tissue	0.2	0.2	0.3	0.3	0.2	0.2
Other	0.2	0.2	0.2	0.2	0.2	0.2
Unknown	2.2	1.3	1.7	2.1	2.4	2.3

SOURCE: Social Security Administration, Disabled Beneficiaries and Dependents Master Beneficiary Record file, 100 percent data.

NOTE: FRA = full retirement age.

CONTACT: Kevin Kulzer (410) 965-5366 or di.asr@ssa.gov.

Disabled Workers

Table 25.
Distribution of workers with a secondary benefit (dual entitlement), by worker's smaller primary insurance amount and sex, December 2004

Primary insurance amount (dollars)	Total		Men		Women	
	Number	Percent	Number	Percent	Number	Percent
All disabled workers	201,468	100.0	46,617	100.0	154,851	100.0
Less than 300.00	30,452	15.1	10,180	21.8	20,272	13.1
300.00–399.90	28,545	14.2	10,137	21.7	18,408	11.9
400.00–499.90	28,360	14.1	8,514	18.3	19,846	12.8
500.00–599.90	41,182	20.4	9,309	20.0	31,873	20.6
600.00–699.90	29,196	14.5	4,252	9.1	24,944	16.1
700.00–799.90	18,324	9.1	1,855	4.0	16,469	10.6
800.00–899.90	10,915	5.4	938	2.0	9,977	6.4
900.00–999.90	6,410	3.2	543	1.2	5,867	3.8
1,000.00–1,099.90	3,679	1.8	337	0.7	3,342	2.2
1,100.00 or more	4,405	2.2	552	1.2	3,853	2.5
Average amount (dollars)	543.80		456.20		570.20	

SOURCE: Social Security Administration, Disabled Beneficiaries and Dependents Master Beneficiary Record file, 100 percent data.

CONTACT: Kevin Kulzer (410) 965-5366 or di.asr@ssa.gov.

Table 26.
Distribution of workers with a secondary benefit (dual entitlement), by type of secondary benefit and sex, December 2004

Type of secondary benefit	Total		Men		Women	
	Number	Percent	Number	Percent	Number	Percent
All disabled workers ^a	201,468	100.0	46,617	100.0	154,851	100.0
Spouses	23,268	11.5	154	0.3	23,114	14.9
Widow(er)s	29,360	14.6	799	1.7	28,561	18.4
Disabled widow(er)s	76,499	38.0	2,441	5.2	74,058	47.8
Surviving mothers and fathers	1,943	1.0	81	0.2	1,862	1.2
Disabled adult children	70,397	34.9	43,142	92.5	27,255	17.6

SOURCE: Social Security Administration, Disabled Beneficiaries and Dependents Master Beneficiary Record file, 100 percent data.

a. Includes a few individuals who are receiving parents benefits.

CONTACT: Kevin Kulzer (410) 965-5366 or di.asr@ssa.gov.

Disabled Workers

Table 27.
Number, by sex, state or other area, and age, December 2004

State or area	Total	Under 25	25-34	35-44	45-54	55-FRA
<i>All disabled workers</i>						
All areas	6,197,385	56,628	357,042	988,779	1,925,243	2,869,693
Alabama	158,703	967	8,433	24,624	50,947	73,732
Alaska	9,150	137	670	1,613	2,911	3,819
Arizona	114,578	1,110	7,220	18,323	35,491	52,434
Arkansas	97,653	686	5,141	14,409	29,874	47,543
California	528,609	4,287	28,439	85,008	167,066	243,809
Colorado	68,862	680	3,859	11,087	23,053	30,183
Connecticut	62,517	683	3,905	11,624	18,899	27,406
Delaware	19,473	180	1,111	3,494	6,197	8,491
District of Columbia	9,436	111	628	1,747	3,235	3,715
Florida	378,099	2,898	18,641	58,618	116,059	181,883
Georgia	186,943	1,222	9,512	28,411	58,071	89,727
Hawaii	17,740	97	982	2,821	5,667	8,173
Idaho	27,302	364	2,016	4,223	8,163	12,536
Illinois	212,168	2,726	14,507	34,981	65,286	94,668
Indiana	134,461	1,514	9,355	22,367	42,066	59,159
Iowa	56,604	838	4,264	9,467	17,366	24,669
Kansas	50,782	632	3,452	8,429	16,057	22,212
Kentucky	153,184	1,155	8,935	24,672	48,480	69,942
Louisiana	110,422	863	6,054	17,138	35,447	50,920
Maine	44,038	548	3,210	8,385	13,566	18,329
Maryland	85,926	925	5,005	15,212	27,017	37,767
Massachusetts	145,391	2,066	10,512	28,585	45,469	58,759
Michigan	227,568	2,535	14,576	34,988	71,808	103,661
Minnesota	85,488	1,769	7,032	15,004	26,173	35,510
Mississippi	102,132	663	5,759	15,914	32,617	47,179
Missouri	152,857	1,432	9,079	24,963	47,995	69,388
Montana	19,673	206	1,061	2,847	6,037	9,522
Nebraska	31,282	483	2,181	5,256	9,605	13,757
Nevada	43,613	370	2,194	6,443	12,855	21,751
New Hampshire	30,822	525	2,293	6,161	9,454	12,389
New Jersey	147,396	1,137	7,571	24,582	43,993	70,113
New Mexico	41,660	428	2,436	6,388	13,043	19,365
New York	387,666	2,617	19,491	64,163	117,774	183,621
North Carolina	237,795	1,537	12,095	35,624	72,669	115,870
North Dakota	10,478	144	772	1,574	3,198	4,790
Ohio	230,460	3,183	16,945	37,427	70,761	102,144
Oklahoma	84,410	730	4,579	12,222	25,711	41,168
Oregon	71,398	547	4,107	10,261	21,578	34,905
Pennsylvania	275,892	3,006	17,111	45,521	85,123	125,131
Rhode Island	27,875	346	1,667	4,836	8,758	12,268
South Carolina	124,724	745	5,782	18,076	38,629	61,492
South Dakota	13,837	212	927	2,173	4,296	6,229
Tennessee	172,989	1,070	9,423	27,426	53,763	81,307
Texas	350,669	3,115	19,798	54,343	110,112	163,301
Utah	27,163	352	2,446	4,548	8,074	11,743

(Continued)

Table 27.
Number, by sex, state or other area, and age, December 2004—Continued

State or area	Total	Under 25	25–34	35–44	45–54	55–FRA
<i>All disabled workers (cont.)</i>						
Vermont	14,992	256	1,077	2,728	4,641	6,290
Virginia	156,592	1,298	8,561	25,222	49,051	72,460
Washington	115,238	1,090	7,290	18,218	35,538	53,102
West Virginia	76,039	367	3,510	10,259	23,953	37,950
Wisconsin	104,633	1,551	7,766	17,711	32,044	45,561
Wyoming	9,166	123	577	1,403	2,838	4,225
Outlying areas						
American Samoa	1,045	a	a	72	302	663
Guam	1,055	9	64	178	334	470
Northern Mariana Islands	169	a	a	40	58	50
Puerto Rico	134,694	80	2,735	15,683	42,538	73,658
Virgin Islands	1,554	a	a	203	428	865
Foreign countries	12,320	6	206	1,084	3,105	7,919
<i>Men</i>						
All areas	3,373,226	33,171	191,916	532,512	1,035,879	1,579,748
Alabama	85,160	574	4,547	12,978	26,956	40,105
Alaska	5,153	85	402	890	1,582	2,194
Arizona	60,970	652	3,740	9,540	18,380	28,658
Arkansas	53,927	407	2,792	7,828	16,365	26,535
California	286,028	2,572	15,821	47,387	89,440	130,808
Colorado	36,348	425	2,114	5,818	11,967	16,024
Connecticut	33,027	390	2,104	6,077	9,810	14,646
Delaware	9,704	96	544	1,711	3,045	4,308
District of Columbia	5,099	62	327	1,022	1,814	1,874
Florida	205,831	1,696	10,232	31,841	62,422	99,640
Georgia	98,584	749	5,156	15,293	30,169	47,217
Hawaii	10,563	56	581	1,745	3,355	4,826
Idaho	15,453	209	1,125	2,320	4,444	7,355
Illinois	114,314	1,557	7,726	18,706	34,744	51,581
Indiana	71,479	884	4,887	11,742	22,094	31,872
Iowa	30,555	518	2,320	4,979	9,302	13,436
Kansas	26,337	375	1,804	4,249	8,191	11,718
Kentucky	90,015	667	4,879	14,087	28,639	41,743
Louisiana	69,517	541	3,528	10,622	22,390	32,436
Maine	25,036	310	1,696	4,642	7,651	10,737
Maryland	44,860	546	2,637	7,972	13,895	19,810
Massachusetts	76,119	1,125	5,114	14,621	23,969	31,290
Michigan	122,342	1,459	7,635	18,753	38,337	56,158
Minnesota	45,850	991	3,606	7,787	13,711	19,755
Mississippi	55,214	433	3,084	8,416	17,558	25,723
Missouri	81,782	830	4,873	13,415	25,370	37,294
Montana	11,401	124	585	1,585	3,424	5,683
Nebraska	16,171	279	1,138	2,590	4,799	7,365
Nevada	23,104	204	1,117	3,349	6,600	11,834
New Hampshire	15,494	271	1,056	2,948	4,668	6,551

(Continued)

Disabled Workers

Table 27.
Number, by sex, state or other area, and age, December 2004—Continued

State or area	Total	Under 25	25-34	35-44	45-54	55-FRA
Men (cont.)						
New Jersey	76,046	645	3,908	12,257	22,453	36,783
New Mexico	24,780	268	1,388	3,739	7,595	11,790
New York	210,320	1,537	10,550	34,485	63,818	99,930
North Carolina	121,764	960	6,592	18,372	36,493	59,347
North Dakota	5,994	91	441	855	1,776	2,831
Ohio	128,335	1,810	9,089	20,343	39,048	58,045
Oklahoma	46,370	439	2,553	6,827	13,958	22,593
Oregon	39,815	351	2,310	5,759	11,619	19,776
Pennsylvania	150,954	1,711	8,854	24,200	46,145	70,044
Rhode Island	14,516	190	861	2,498	4,577	6,390
South Carolina	64,468	444	3,084	9,236	19,581	32,123
South Dakota	7,662	133	480	1,098	2,394	3,557
Tennessee	91,446	634	4,923	14,101	28,020	43,768
Texas	196,333	1,827	10,890	30,364	60,509	92,743
Utah	14,707	224	1,321	2,450	4,294	6,418
Vermont	8,304	140	582	1,453	2,509	3,620
Virginia	84,061	793	4,468	13,213	26,170	39,417
Washington	63,122	643	4,102	9,998	19,012	29,367
West Virginia	50,460	227	2,079	6,439	15,863	25,852
Wisconsin	56,219	875	3,950	9,115	16,967	25,312
Wyoming	5,150	66	322	791	1,549	2,422
Outlying areas						
American Samoa	612	0	a	a	182	377
Guam	660	a	a	111	216	292
Northern Mariana Islands	111	a	a	a	34	35
Puerto Rico	75,859	65	1,783	8,990	23,479	41,542
Virgin Islands	868	a	a	112	222	496
Foreign countries	8,853	a	a	714	2,305	5,702
Women						
All areas	2,824,159	23,457	165,126	456,267	889,364	1,289,945
Alabama	73,543	393	3,886	11,646	23,991	33,627
Alaska	3,997	52	268	723	1,329	1,625
Arizona	53,608	458	3,480	8,783	17,111	23,776
Arkansas	43,726	279	2,349	6,581	13,509	21,008
California	242,581	1,715	12,618	37,621	77,626	113,001
Colorado	32,514	255	1,745	5,269	11,086	14,159
Connecticut	29,490	293	1,801	5,547	9,089	12,760
Delaware	9,769	84	567	1,783	3,152	4,183
District of Columbia	4,337	49	301	725	1,421	1,841
Florida	172,268	1,202	8,409	26,777	53,637	82,243
Georgia	88,359	473	4,356	13,118	27,902	42,510
Hawaii	7,177	41	401	1,076	2,312	3,347
Idaho	11,849	155	891	1,903	3,719	5,181
Illinois	97,854	1,169	6,781	16,275	30,542	43,087
Indiana	62,982	630	4,468	10,625	19,972	27,287

(Continued)

Table 27.
Number, by sex, state or other area, and age, December 2004—Continued

State or area	Total	Under 25	25–34	35–44	45–54	55–FRA
<i>Women (cont.)</i>						
Iowa	26,049	320	1,944	4,488	8,064	11,233
Kansas	24,445	257	1,648	4,180	7,866	10,494
Kentucky	63,169	488	4,056	10,585	19,841	28,199
Louisiana	40,905	322	2,526	6,516	13,057	18,484
Maine	19,002	238	1,514	3,743	5,915	7,592
Maryland	41,066	379	2,368	7,240	13,122	17,957
Massachusetts	69,272	941	5,398	13,964	21,500	27,469
Michigan	105,226	1,076	6,941	16,235	33,471	47,503
Minnesota	39,638	778	3,426	7,217	12,462	15,755
Mississippi	46,918	230	2,675	7,498	15,059	21,456
Missouri	71,075	602	4,206	11,548	22,625	32,094
Montana	8,272	82	476	1,262	2,613	3,839
Nebraska	15,111	204	1,043	2,666	4,806	6,392
Nevada	20,509	166	1,077	3,094	6,255	9,917
New Hampshire	15,328	254	1,237	3,213	4,786	5,838
New Jersey	71,350	492	3,663	12,325	21,540	33,330
New Mexico	16,880	160	1,048	2,649	5,448	7,575
New York	177,346	1,080	8,941	29,678	53,956	83,691
North Carolina	116,031	577	5,503	17,252	36,176	56,523
North Dakota	4,484	53	331	719	1,422	1,959
Ohio	102,125	1,373	7,856	17,084	31,713	44,099
Oklahoma	38,040	291	2,026	5,395	11,753	18,575
Oregon	31,583	196	1,797	4,502	9,959	15,129
Pennsylvania	124,938	1,295	8,257	21,321	38,978	55,087
Rhode Island	13,359	156	806	2,338	4,181	5,878
South Carolina	60,256	301	2,698	8,840	19,048	29,369
South Dakota	6,175	79	447	1,075	1,902	2,672
Tennessee	81,543	436	4,500	13,325	25,743	37,539
Texas	154,336	1,288	8,908	23,979	49,603	70,558
Utah	12,456	128	1,125	2,098	3,780	5,325
Vermont	6,688	116	495	1,275	2,132	2,670
Virginia	72,531	505	4,093	12,009	22,881	33,043
Washington	52,116	447	3,188	8,220	16,526	23,735
West Virginia	25,579	140	1,431	3,820	8,090	12,098
Wisconsin	48,414	676	3,816	8,596	15,077	20,249
Wyoming	4,016	57	255	612	1,289	1,803
Outlying areas						
American Samoa	433	a	a	a	120	286
Guam	395	a	a	67	118	178
Northern Mariana Islands	58	0	a	a	24	15
Puerto Rico	58,835	15	952	6,693	19,059	32,116
Virgin Islands	686	a	a	91	206	369
Foreign countries	3,467	a	a	370	800	2,217

SOURCE: Social Security Administration, Disabled Beneficiaries and Dependents Master Beneficiary Record file, 100 percent data.

NOTE: FRA = full retirement age.

a. Data not shown to avoid disclosure of information for particular individuals.

CONTACT: Kevin Kulzer (410) 965-5366 or di.asr@ssa.gov.

Disabled-Worker Families

Table 28.
Number and average monthly family benefit, by selected family composition,
December 1960–2004

Year	Worker only			Worker, spouse, and—		Worker and aged spouse ^a
	All	Men	Women	1 child	2 or more children	
<i>Number (thousands)</i>						
1960	357	261	96	22	32	22
1965	714	481	232	54	109	30
1970	1,054	680	374	77	164	43
1975	1,750	1,080	671	137	250	66
1980	2,061	1,257	804	154	228	80
1981	--	--	--	--	--	--
1982	1,969	1,208	760	124	163	78
1983	1,961	1,215	746	85	143	80
1984	1,993	1,241	752	83	140	76
1985	2,039	1,267	772	84	140	76
1986	2,096	1,301	795	82	136	74
1987	2,154	1,338	816	79	132	74
1988	2,194	1,353	841	77	125	71
1989	2,262	1,390	872	75	120	67
1990	2,370	1,448	922	75	118	63
1991	2,523	1,529	994	76	119	61
1992	2,738	1,643	1,094	78	125	61
1993	2,935	1,743	1,192	78	127	59
1994	3,121	1,830	1,292	76	128	57
1995	3,305	1,909	1,396	75	124	55
1996	3,473	1,973	1,500	61	104	53
1997	3,593	2,006	1,588	57	91	53
1998	3,769	2,074	1,695	52	80	53
1999	3,924	2,131	1,793	49	72	52
2000	4,080	2,191	1,890	45	65	50
2001	4,260	2,289	1,970	68	92	57
2002	4,487	2,392	2,095	64	86	56
2003	4,769	2,525	2,244	57	82	60
2004	5,068	2,665	2,403	55	78	65

(Continued)

Table 28.
Number and average monthly family benefit, by selected family composition,
December 1960–2004—Continued

Year	Worker only			Worker, spouse, and—		Worker and aged spouse ^a
	All	Men	Women	1 child	2 or more children	
<i>Average monthly family benefit (dollars)</i>						
1960	87.90	91.90	76.90	184.70	192.20	135.50
1965	95.40	100.70	85.00	201.00	216.30	145.90
1970	128.10	136.30	113.10	264.10	273.20	199.20
1975	218.90	240.00	185.00	441.00	454.00	344.00
1980	355.40	396.20	291.70	727.00	746.10	573.00
1981	--	--	--	--	--	--
1982	424.40	474.20	344.70	847.40	858.20	690.70
1983	439.40	490.90	355.40	867.90	881.80	716.20
1984	454.00	507.60	365.70	881.50	885.50	740.40
1985	466.90	523.10	374.60	898.10	895.20	765.00
1986	470.70	527.80	377.40	896.90	888.30	773.30
1987	491.60	552.00	392.60	929.40	918.30	815.50
1988	512.20	576.10	409.50	960.20	938.40	855.40
1989	539.30	607.10	431.20	1,009.40	971.90	903.70
1990	570.40	642.80	456.80	1,062.10	1,016.00	960.80
1991	592.30	668.40	475.50	1,098.00	1,043.30	1,004.70
1992	609.50	688.70	490.70	1,122.10	1,057.40	1,045.00
1993	625.50	707.20	506.00	1,143.00	1,074.20	1,078.20
1994	646.20	731.80	525.00	1,177.60	1,100.00	1,118.60
1995	667.60	757.40	544.80	1,205.50	1,130.90	1,159.90
1996	690.60	785.30	566.00	1,245.90	1,148.50	1,200.60
1997	708.00	806.60	583.60	1,280.20	1,165.90	1,238.50
1998	720.00	820.20	597.40	1,300.40	1,189.40	1,261.90
1999	741.20	844.50	618.50	1,344.90	1,224.20	1,295.30
2000	773.60	880.70	649.40	1,394.20	1,274.30	1,355.50
2001	807.40	914.40	683.10	1,413.50	1,298.50	1,393.50
2002	827.30	935.80	703.50	1,445.10	1,331.70	1,431.50
2003	854.80	965.90	729.70	1,495.80	1,373.30	1,486.80
2004	887.30	1,001.60	760.60	1,554.20	1,426.80	1,546.10

SOURCES: Social Security Administration. For years before 2001, *Annual Statistical Supplement to the Social Security Bulletin*, based on the Master Beneficiary Record (from 1960 to 1984, various sampling rates; from 1985 to 2000, 10 percent sample); beginning with 2001, Disabled Beneficiaries and Dependents Master Beneficiary Record file, 100 percent data.

NOTES: A "family" means beneficiaries entitled on one worker's account.

Data include beneficiaries whose benefits are being withheld.

-- = not available.

a. Spouse's entitlement based on age.

CONTACT: Kevin Kulzer (410) 965-5366 or di.asr@ssa.gov.

Disabled-Worker Families

Table 29.
Number, average primary insurance amount, and average monthly family benefit, by family composition, December 2004

Family composition	Number of families	Number of beneficiaries	Average primary insurance amount (dollars)	Average monthly family benefit (dollars)	Percentage of families receiving maximum family benefit ^a
Worker only					
Men	2,665,017	2,665,017	1,007.24	1,001.60	9.6
Women	2,403,168	2,403,168	761.71	760.60	21.2
Worker with children					
By sex of worker					
Men	593,525	1,518,297	978.89	1,394.40	83.2
Women	442,841	1,114,922	789.69	1,085.00	90.3
By number of children					
1 child	636,683	1,273,367	905.74	1,268.60	85.8
2 children	282,090	846,275	897.17	1,270.10	88.2
3 or more children	117,593	513,577	858.47	1,208.60	84.0
Worker with—					
Spouse aged 62 or older ^b	65,399	131,078	1,264.37	1,546.10	7.9
Spouse aged 62 or older and 1 or more children	2,286	7,575	1,150.50	1,855.70	71.7
Spouse and 1 child	53,415	160,260	1,024.68	1,544.20	92.2
Spouse and 2 children	46,529	186,139	986.25	1,463.60	90.8
Spouse and 3 or more children	30,848	170,234	941.00	1,364.80	82.7

SOURCE: Social Security Administration, Disabled Beneficiaries and Dependents Master Beneficiary Record file, 100 percent data.

NOTES: A "family" means beneficiaries entitled on one worker's account.

Data include beneficiaries whose benefits are being withheld.

a. Includes families and worker-only beneficiaries for whom the primary insurance amount is equal to the family maximum amount.

b. If the spouse is also entitled to a retired-worker benefit, only the benefit amount received as a spouse is included.

CONTACT: Kevin Kulzer (410) 965-5366 or di.asr@ssa.gov.

Table 30.
Distribution, by family composition and age of worker, December 2004

Family composition	Total, all ages	Under 30	30-34	35-39	40-44	45-49	50-54	55-59	60-FRA
<i>Number</i>									
Worker only	5,068,185	159,046	137,538	205,810	386,084	633,768	909,350	1,241,019	1,395,570
Worker with—									
Spouse									
Aged 62 or older ^a	67,685	0	b	b	66	362	1,671	8,368	57,204
Child in care	130,792	2,738	7,656	16,700	26,144	27,365	22,062	16,847	11,280
Children									
1 child	636,683	22,563	36,211	68,586	125,275	141,487	112,798	79,907	49,856
2 children	282,090	11,562	29,025	57,221	73,419	55,267	30,149	16,653	8,794
3 or more children	117,593	5,549	18,073	30,762	29,604	17,643	8,510	4,895	2,557
Families receiving maximum benefit ^c	1,783,420	130,024	134,149	214,492	310,488	306,808	254,406	228,046	205,007
<i>Percent</i>									
Worker only	100.0	3.1	2.7	4.1	7.6	12.5	17.9	24.5	27.5
Worker with—									
Spouse									
Aged 62 or older ^a	100.0	0	b	b	0.1	0.5	2.5	12.4	84.5
Child in care	100.0	2.1	5.9	12.8	20.0	20.9	16.9	12.9	8.6
Children									
1 child	100.0	3.5	5.7	10.8	19.7	22.2	17.7	12.6	7.8
2 children	100.0	4.1	10.3	20.3	26.0	19.6	10.7	5.9	3.1
3 or more children	100.0	4.7	15.4	26.2	25.2	15.0	7.2	4.2	2.2
Families receiving maximum benefit ^c	28.3	64.5	58.7	56.6	48.5	35.0	23.5	16.7	13.4

SOURCE: Social Security Administration, Disabled Beneficiaries and Dependents Master Beneficiary Record file, 100 percent data.

NOTES: A "family" means beneficiaries entitled on one worker's account.

Data include beneficiaries whose benefits are being withheld.

FRA = full retirement age.

a. Includes spouses aged 62 or older with children.

b. Data not shown to avoid disclosure of information for particular individuals.

c. Includes families and worker-only beneficiaries for whom the primary insurance amount is equal to the family maximum amount.

CONTACT: Kevin Kulzer (410) 965-5366 or di.asr@ssa.gov.