

SOUTH COAST AIR QUALITY MANAGEMENT DISTRICT

Annual Report on AB 2588 Air Toxics “Hot Spots” Program

March 2008

Deputy Executive Officer
Planning, Rule Development and Area Sources
Elaine Chang, Dr.PH

Assistant Deputy Executive Officer
Planning, Rule Development and Area Sources
Laki Tisopulos, Ph.D., P.E.

Director, Strategic Initiatives
Jill Whynot

Author: Yi-Chia H. Chao, Sr. AQ Engineer

Technical assistance: Victoria Moaveni, Sr. AQ Engineer
Pierre Sycip, AQ Specialist

Reviewed by: Thomas Chico, Program Supervisor
Barbara Baird

INTRODUCTION

This report satisfies Section 44363 of the California Health and Safety Code which requires the South Coast Air Quality Management District (AQMD) to annually prepare and publish a status and forecast report of the Air Toxics “Hot Spots” Information and Assessment Act (or AB 2588) activities. The main body of the report presents AB 2588 activities that occurred in calendar year 2007 and describes plans for future activities [Section 44363(a)(1)]. Appendix A lists facilities which have prepared health risk assessments for the AB 2588 program and their corresponding risks [Section 44363(a) (2) and (3)]. Appendix B describes the status of control measures and rules to reduce emissions of toxic air contaminants [Section 44363(a)(4)].

Background

In 1987, the California legislature adopted the Air Toxics “Hot Spots” Information and Assessment Act (or AB 2588). AB 2588 requires facilities to submit an air toxics inventory report (ATIR). A facility’s priority score is calculated from information in the ATIR.

AQMD staff follows the procedures in Health and Safety Code Section 44360 for prioritization and categorization of facilities. The potency, toxicity and amount of toxics released into the air, as well as the distance to workers, residents and sensitive receptors (such as hospitals, schools, and day care centers) are considered for prioritization and categorization. Facilities are assigned to high, medium, and low priority categories.

A facility with a priority score greater than ten (10) must provide a health risk assessment (HRA), following guidelines established by the State of California Office of Environmental Health Hazard Assessment (OEHHA),^[1] and supplemented by AQMD guidelines.^[2] If the risk reported in the HRA exceeds specific thresholds, then the facility is required to provide public notice to the affected community. The program is illustrated in Figure 1.

In 1992, the California legislature added a risk reduction component, the Facility Air Toxic Contaminant Risk Audit and Reduction Plan (or SB 1731), which required the District to specify a significant risk level, above which risk reduction would be required. In Rule 1402, the Governing Board set the significant risk level at a cancer risk of 100 in a million, and a total chronic or acute hazard index of 5.0. The Board also established action risk levels at a cancer burden of 0.5, a cancer risk of 25 in a million, and a hazard index of 3.0. Public notification and a public meeting are required for facilities with cancer risks greater than or equal to ten in a million or non-cancer acute or chronic hazard index greater than one. Rule 1402 requires annual public notice until the facility gets below the action risk levels.

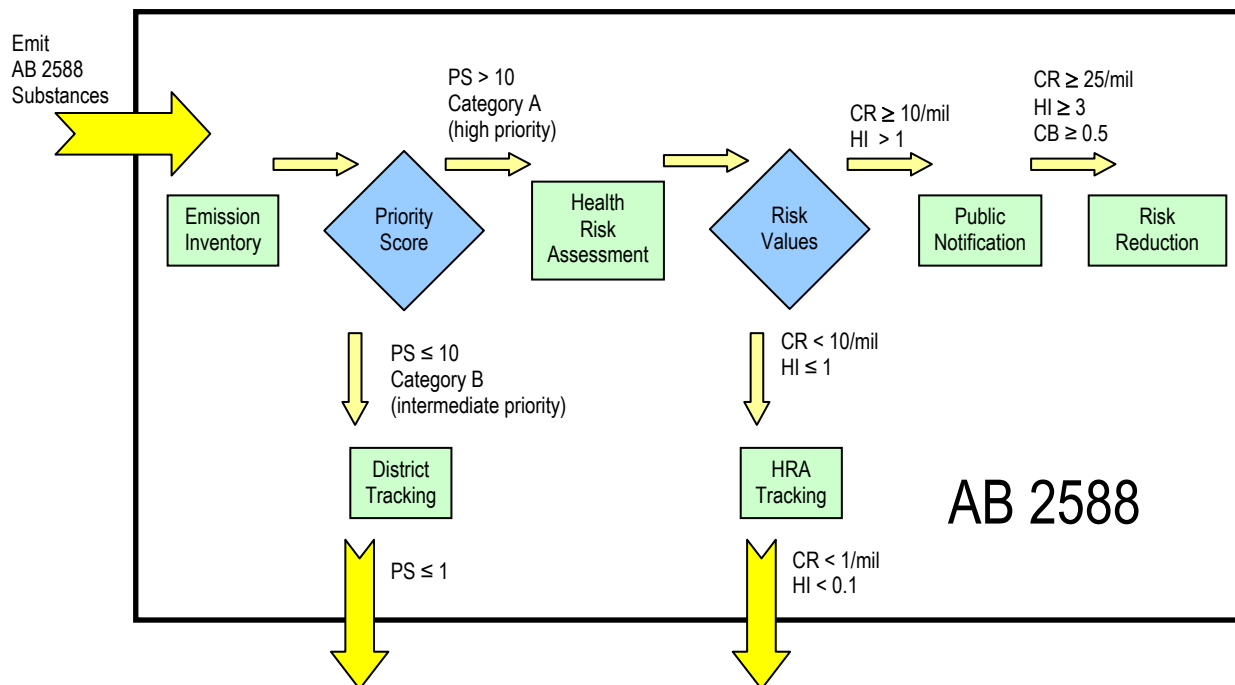


Figure 1 - Schematic of the Hot Spots Program
 (CR = cancer risk; PS = priority score; HI = hazard index; CB = cancer burden)

Currently, AQMD staff uses the Annual Emissions Reporting (AER) software and forms to obtain a preliminary toxic inventory used for facility prioritization. Facilities with priority scores greater than ten are then asked to submit a detailed ATIR and perform an HRA using ARB’s Hotspots Analysis and Reporting Program (HARP).^[3]

Universe

AQMD has nearly 700 facilities active in the program, more than any other air district in the state. A facility is considered active in the AB 2588 program if it is subject to Hot Spots fees and is required to update its toxic inventory once every four years. This includes facilities that have:

- cancer risks greater than or equal to one in a million; or
- non-cancer hazard index greater than or equal to 0.1; or
- priority score greater than 1.

Air districts were also permitted to identify industry-wide categories. The facilities that qualify for these categories share the same Standard Industrial Classification (SIC) code, by majority are small businesses, would suffer severe economic hardships by individual compliance, and can be easily and generically characterized. To date, the AQMD has identified seven industry-wide categories:

- Retail Gasoline Dispensing;
- Perchloroethylene Dry Cleaning;
- Auto Body Shops;
- Fiberglass Molding;
- Printing;
- Metal Plating; and
- Wood Stripping / Refinishing.

The advantage to an industry-wide category is that compliance may be handled collectively. The California Air Pollution Control Officers Association's (CAPCOA) Toxics Committee has been tasked with developing statewide emission inventory and risk assessment guidelines for several of these Industry-wide categories. Specifically, such guidelines have been completed for auto body shops^[4] and gasoline service stations.^[5] Guidelines for perchloroethylene dry cleaners^[6] are being finalized. The guidelines provide a cost-effective and uniform method for calculating facility emissions and estimating toxic risks for the approximately 1,400 auto body shops, 3,200 gasoline service stations and 1,400 perchloroethylene dry cleaners under the AQMD's jurisdiction. In this manner, the AQMD may prepare industry-wide inventories, risk assessments, and public notices and risk reduction plans if necessary. Facilities with emergency DICES only are treated similarly to an industry-wide category, as described later in this report.

ACTIVITIES AND ACCOMPLISHMENTS

In calendar year 2007, the AB 2588 program staff accomplished the following:

- Approved eleven (11) facility HRAs and eight (8) updated facility HRAs;
- Conducted one (1) public notice meeting;
- Prioritized AB2588 facilities for FY2003-04, FY2004-05, and FY2005-06;
- Notified 25 facilities to prepare a detailed toxic emission inventory;
- Evaluated 16 facility-wide toxic inventories;
- Developed public notification procedures for emergency diesel internal combustion engines (DICES) and the industry-wide categories of retail gasoline stations and perchloroethylene dry cleaners which were adopted by the Board on January 5, 2007;
- Developed a list of emergency DICES - only facilities and billed these facilities according to Rule 307.1;
- Notified about 1,400 perchloroethylene dry cleaners to ensure compliance with Rule 1421 requirements; and
- Added criteria and toxic emissions for fiscal year 2005-2006 to the AB2588 website and made it available to the public.

Each of these efforts is further explained below.

ATIRs, HRAs, and Risk Reduction

To date, staff has reviewed and approved over 300 facility HRAs. 40 facilities were required to perform a public notice and 20 facilities were subject to risk reduction. The results are summarized in Figures 2 and 3. For some of the facilities, the values indicate the risks after the implementation of risk reduction plans. Appendix A provides the cancer and non-cancer risk levels for each of the facilities that prepared an HRA. Over 96 percent of the facilities now have cancer risks below ten in a million and over 98 percent of the facilities have acute and chronic non-cancer hazard indices less than 1.

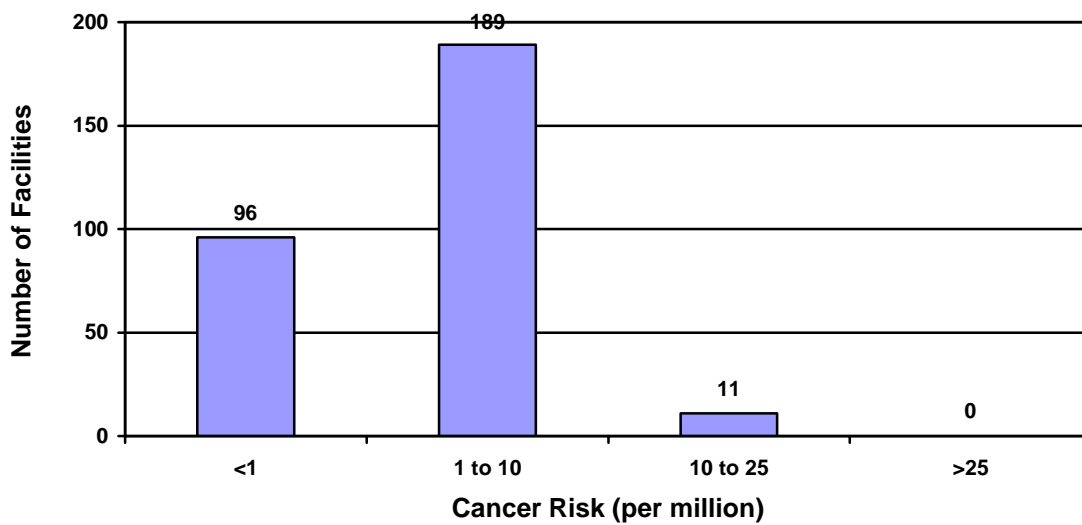


Figure 2 - Summary of Facility Cancer Risks

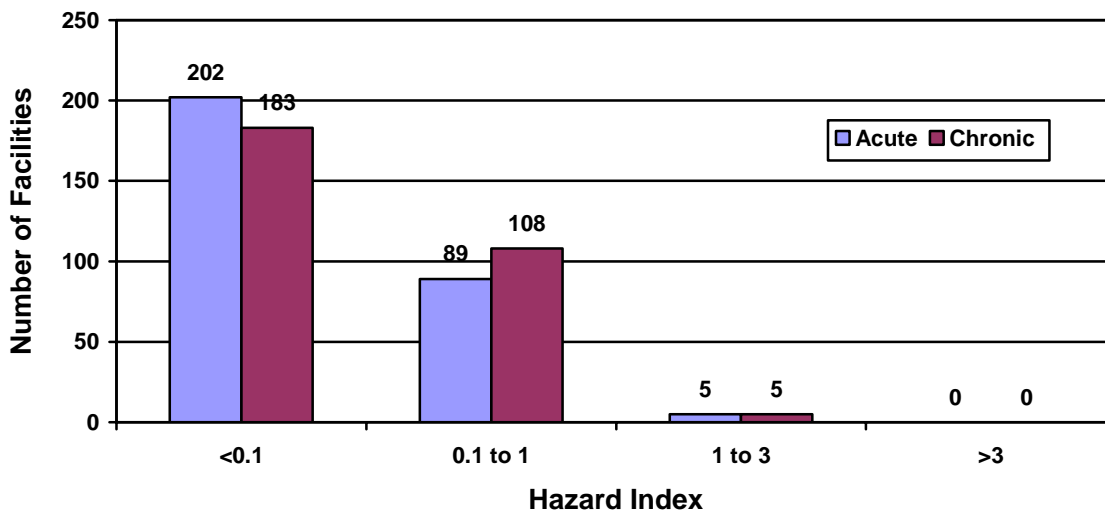


Figure 3 - Summary of Facility Non-Cancer Risks

In 2007, 24 HRAs were reviewed. Among these HRAs, 19 were approved and 5 were rejected based on comments from AQMD and OEHHA staff. Of those rejected, four revised HRAs are currently under review. The other one is being modified to address comments from both AQMD and OEHHA staff. In 2007, 16 facility HRAs were submitted.

Since the amendment of Rule 1402 on March 17, 2000, which lowered the action risk levels, the AB 2588 staff identified 20 facilities that were required to reduce risks (see Table 1).

Table 1 - Status of Risk Reduction Plans

Fac. ID	Facility Name	Submitted?	Approved?	Implemented?	Residual Risk
7427	Owens-Brockway Glass	Yes	Yes	Yes	Acute HI: 0.01
7730	E.R. Carpenter	Yes	Yes	Yes	Chronic HI: 1.34
8015	Anadite Inc.	Yes	Yes	Yes	Cancer: 3.5
8547	Quemetco	Yes	Yes	on or before April 2009	Cancer: 8.8 Acute HI: 0.1 Chronic HI: 0.26 (a)
8570	Embee Inc.	Yes	Yes	Yes	Cancer: 6.6
14191	Nicklör Chemical Co.	Yes	Yes	Yes	Noncancer HIs: 0 (b)
15504	Schlosser Forge Co.	Yes	Yes	Yes	Cancer : 9.5 Chronic HI: 1.11
18294	Northrop-Grumman	Yes	Yes	Yes	Cancer: 7.6
22410	Palace Plating	Yes	Yes	Yes	Cancer: 5.6 Acute HI: 0.73 Chronic HI: 0.38
25012	Amada Manufacturing America, Inc.	Yes	Yes	Yes	Cancer: <0.1
41229	Lubeco, Inc.	Yes	Yes	Yes	Cancer: 14.0
45938	E.M.E. Inc.	Yes	Yes	Yes	Cancer: <0.1
48323	Sigma Plating Co.	Yes	Yes	Yes	Cancer: 13.8
61160	GE Engine Services	Yes	Yes	Yes	Acute HI: 0.7
116459	GE Engine Services	Yes	Yes	Yes	Cancer: 9.3
119127	PRC DeSoto International	Yes	Yes	Yes	Cancer: <0.1
126501	Vought Aircraft Industries, Inc.	Yes	Yes	Yes	Cancer: 19.7
134931	Alcoa Global Fasteners, Inc.	Yes	Yes	Yes	Cancer: 0.6
800063	Grover Products Co.	Yes	Yes	Yes	Cancer: 3.3
800196	American Airlines, Inc.	Yes	Yes	Yes	Cancer: 5.4 Acute HI: 0.86

(a) Projected cancer and non-cancer risks with the implementation of the approved Risk Reduction Plan.

(b) Facility left the South Coast Air Basin as a result of a consent decree with the City of Carson. Thus, risks are zero.

Quemetco's risk reduction plan was submitted on April 11, 2006, approved on May 12, 2006, and due for completion by April 11, 2009. Their risk reduction activities are ongoing (throughout 2007). A corresponding Public Notice was posted in June 2007 stating that their current risk reduction plans involve the addition of five parallel wet electrostatic precipitators (WESPs) and one regenerative thermal oxidizer (RTO). The control equipment has been installed and will be operational soon. All other facilities in Table 1 have fully implemented their risk reduction plans.

A public notification meeting for Bowman Plating Co. was held on October 24, 2007 because the facility's cancer risks were over 10 in a million. About 25 households or businesses were notified and 8 people attended the meeting.

Gregg Industries is a gray iron foundry located in El Monte. They produce iron castings for industrial, automotive, and trucking applications. Gregg Industries submitted their draft HRA on February 15, 2007 and in response to comments, a revised HRA was submitted on December 3, 2007 and is currently under review.

Public Notification Procedures for Emergency Standby Diesel Internal Combustion Engines (DICEs) and Industry-wide Categories of Gas Stations and Dry Cleaners

On January 5, 2007 the AQMD Governing Board adopted public notification procedures for emergency DICEs and industry-wide categories of gas stations and perchloroethylene dry cleaners^[7]. The procedures differ from the notification procedures for the relatively few large (or core) stationary sources that have traditionally been in the program. In recognition that there are thousands of facilities that may require public notice, the Governing Board adopted a significantly streamlined approach. Only facilities with cancer risks of 10 in a million or above, excluding risk attributable to the emergency DICE, are required to notify the affected community by direct mailing and hold a public meeting.

Staff has developed a database of approximately 4,300 facilities and is in the process of posting the information on the AQMD website.

Rule 1421 Compliance Letters for Perchloroethylene Dry Cleaners

Staff prepared and distributed Rule 1421 compliance letters to all active dry cleaners with permits for perchloroethylene dry cleaning equipment (approximately 1,400 facilities) in three batches in January, February, and April of 2007. The letters reminded facilities of the requirements in Rule 1421 that integrated primary and secondary control equipment must be in place on all perchloroethylene dry cleaning equipment by November 1, 2007. Secondly, the letter provided perchloroethylene usage limit for each facility and required the submittal of a compliance plan that outlines the facility's acceptance of the usage limit or replacement with a non-perchloroethylene equipment within three years. Approximately 19% of the facilities were without integrated primary and secondary controls as of January 2007. Evaluation after the November deadline shows that only about 3% may not be in compliance and these facilities are undergoing inspections.

Website Enhancements

As part of an earlier Environmental Justice initiative, a web-based tool was developed to display criteria and toxic emissions from facilities in the AER and AB 2588 programs.^[8] A user can select by individual facility (using either facility name or ID), by street name, by city, or by zip code. This past year, the criteria and toxic emissions for FY 2005-06 were added to the database available to the public.

FUTURE ACTIVITIES

In 2008, the staff plans to perform the following tasks.

Implement Public Notification Procedures for Facilities with emergency DICEs - Only and the Industry-wide Categories of Gasoline Stations and Perchloroethylene Dry Cleaners

As discussed earlier, the AQMD Governing Board adopted the public notification procedures for emergency DICEs and industry-wide categories of gasoline stations and perchloroethylene dry cleaners on January 5, 2007. An important task for 2008 is to implement these procedures. This entails:

- (1) Estimating the emissions and cancer risks for approximately 1,400 perchloroethylene dry cleaners, 3,200 gasoline stations; and 1,100 facilities with multiple emergency DICEs only;
- (2) Developing the AQMD website for these categories;
- (3) Publishing the risks on the AQMD website;
- (4) Distributing notices to school districts and local libraries; and
- (5) Posting a notice on facility property.

Develop Work Plan for Addressing Emission Inventory, Risk Assessment, and Public Notification Procedures for the Remaining Industry-wide Categories

In 2008, AB 2588 staff will develop an internal work plan for addressing emission inventory, risk assessment, and public notification procedures for the remaining industry-wide categories of auto body shops, fiberglass manufacturing, printing, metal plating, and wood stripping/finishing.

Continue to Notify Facilities with Prime DICEs

In 2008, AB 2588 staff will continue to identify facilities with prime DICEs, notify these facilities of the requirements to prepare and submit ATIR and HRA, followed by reviewing and approving these HRAs.

Update Risk Prioritization Procedures and Prioritize Facilities with Recent Quadrennial Updates

AB 2588 staff must update the AQMD's risk prioritization procedures to be consistent with the OEHHA's guidelines^[1] and the Risk Assessment Procedures for Rules 1401 and

212,^[9] which are based on cancer potencies (instead of unit risk factors) and have different breathing rates for workers and residents. After that is accomplished, facilities can be prioritized based on the latest quadrennial toxic emission inventory update.

HRA Review and Approval

There are about 20 facility HRAs that are either under review or will be submitted in the first half of 2008. An important task for the coming year is to review and approve these HRAs. AB 2588 staff will continue to identify “high priority” facilities and notify these facilities to prepare detailed ATIR and facility HRA.

REFERENCES

- [1] OEHHA. 2003. The Air Toxics Hot Spots Program Guidance Manual for Preparation of Health Risk Assessments. The document is available at http://www.oehha.org/air/hot_spots/HRAguidefinal.html.
- [2] AQMD. 2005. Supplemental Guidelines for Preparing Risk Assessments to Comply with the Air Toxics ‘Hot Spots’ Information and Assessment Act. The document is available at http://www.aqmd.gov/prdas/AB2588/AB2588_B3.html under the bullet item labeled “AQMD risk assessment guidelines.”
- [3] ARB. 2005. Hotspots Analysis and Reporting Program (HARP). Link to HARP is <http://www.arb.ca.gov/toxics/harp/harp.htm>.
- [4] CAPCOA. 1996. Auto Bodyshop Industrywide Risk Assessment Guidelines. Prepared by CAPCOA, September 1996. The document is located at the following link: <http://www.arb.ca.gov/ab2588/riskassess.htm>.
- [5] CAPCOA. 1997. Gasoline Service Station Industrywide Risk Assessment Guidelines. Prepared by CAPCOA, December 1997. The document is located at the following link: <http://www.arb.ca.gov/ab2588/riskassess.htm>.
- [6] CAPCOA. 2003. Perchloroethylene Dry Cleaner Industrywide Risk Assessment Guidelines. Prepared by CAPCOA, January 13, 2003 (Draft). The document is located at the following link: <http://www.arb.ca.gov/ab2588/riskassess.htm>.
- [7] AQMD. 2007. Emission Inventory and Risk Assessment Guidelines. The document is in the attached material for agenda item #28 of the January 5, 2007 AQMD Governing Board Meeting. See the following link to download the material: <http://www.aqmd.gov/hb/2007/January/0701ag.html>.
- [8] The web-based tool is available at: <http://www.aqmd.gov/aer/DataInquiry.html>.
- [9] AQMD. 2005. Risk Assessment Procedures for Rules 1401 and 212 (Version 7.0). See <http://www.aqmd.gov/prdas/Risk%20Assessment/RiskAssessment.html>.

Appendix A

Health Risks from Facilities with an Approved^(a) HRA

Facility ID	Facility Name	City	Cancer Risk in a million	Acute Hazard Index	Chronic Hazard Index
8547	QUEMETCO INC.	Industry	22.00	0.54	0.19
122822	CONSOLIDATED FILM INDUSTRIES	Hollywood	21.00	0.11	0.40
126501	VOUGHT AIRCRAFT INDUSTRIES	Hawthorne	19.70	0.64	0.24
114927	ANVIL CASES / A CALZONE COMPANY	Industry	19.00	0.13	0.08
11142	KEYSOR-CENTURY CORP	Saugus	17.00	0.54	0.06
18989	BOWMAN PLATING CO. INC.	Compton	14.20	<0.01	<0.01
41229	LUBECO, INC.	Long Beach	14.02	0.00	0.12
35302	OWENS CORNING FIBERGLASS CORP	Compton	14.00	0.07	0.10
48323	SIGMA PLATING COMPANY	La Puente	13.84	0.01	0.74
18648	CROWN CITY PLATING COMPANY	El Monte	11.99	0.39	0.13
29110	OR. CO., SANITATION DIST	Hunt. Beach	10.70(b)	1.78	0.48
106797	SAINT-GOBAIN CONTAINERS LLC	Los Angeles	9.85	0.00	0.07
101380	GENERAL DYNAMICS OTS (DOWNEY) INC	Downey	9.80	0.01	0.05
4451	CHERRY TEXTRON	Santa Ana	9.70	0.07	0.15
800183	PARAMOUNT PETROLEUM CORPORATION	Paramount	9.61	0.02	0.01
800318	GRISWOLD INDUSTRIES	Costa Mesa	9.51	0.10	0.01
15504	SCHLOSSER FORGE CO.	Rancho Cucamonga	9.50	1.59	1.11
800149	US BORAX & CHEM CORP	Wilmington	9.46	0.00	0.03
145990	GARRETT AVIATION SERVICES INC.	Los Angeles	9.33	0.91	0.10
42922	CMC PRINTED BAG INC	Whittier	9.00	<0.01	<0.01
800396	BP WEST COAST PRODUCTS, ARCO VINVALE	South Gate	9.00	<0.01	0.03
3525	P.B. FASTENERS	Gardena	8.91	0.09	0.06
800089	EXXON-MOBIL OIL CORPORATION	Torrance	8.90	0.06	0.05
40829	HAWKER PACIFIC INC	Sun Valley	8.85	0.01	0.43
1744	KIRKHILL RUBBER CO	Brea	8.70	0.20	0.06
800431	PRATT & WHITNEY ROCKETDYNE, INC.	Canoga Park	8.70	<0.01	<0.01
44454	STRUCTURAL COMPOSITES INDUSTRIES, INC.	Pomona	8.60	0.01	0.23
800363	CONOCO-PHILLIPS CO.	Wilmington	8.60	0.98	0.07
2680	LA CO., SANITATION DISTRICT	Whittier	8.57	0.00	0.03

Notes:

(a) Current risks as reviewed and approved by the AB 2588 staff. In most instances the risks are from an approved HRA. However, in some instances the risks are those after the implementation of a risk reduction plan. See Table 1 for the status of the facility's risk reduction plan. Any exceptions to this general rule are noted below.

(b) This includes risk attributable to the emergency DICE. The total facility risks excluding the emergency DICE are less than 10 in a million.

Appendix A. Continued.

Facility ID	Facility Name	City	Cancer Risk in a million	Acute Hazard Index	Chronic Hazard Index
15736	HENRY CO	Hunt. Park	8.50	0.00	0.00
800057	GATX TANK STORAGE TERMINAL CORP	Carson	8.50	0.01	0.06
800079	PETRO DIAMOND TERMINAL CO	Long Beach	8.30	0.00	0.16
125281	MODERN PLATING ALCO CAD-NICKEL PLATING	Los Angeles	8.20	0.10	0.01
21615	OPTICAL RADIATION CORP	Azusa	8.08	0.17	0.10
110924	WESTWAY TERMINAL COMPANY	San Pedro	8.00	0.33	0.51
3609	AL'S PLATING CO INC	Los Angeles	7.81	0.26	0.17
37603	POLYCARBON INC	Valencia	7.80	0.01	0.36
800182	RIVERSIDE CEMENT CO	Riverside	7.80	0.05	0.13
800436	TESORO REFINING AND MARKETING CO.	Wilmington	7.80	0.33	0.45
18294	NORTHROP CORP., AIRCRAFT DIV. - WEST	El Segundo	7.60	0.13	0.05
113170	SANTA MONICA HOSPITAL MEDICAL CTR UNIT 2	Santa Monica	7.60	0.17	0.01
800214	LA CITY, HYPERION TREATMENT PLANT	Playa del Rey	7.59	0.06	0.01
20197	LAC/USC MEDICAL CENTER	Los Angeles	7.50	0.70	0.38
800032	CHEVRON U.S.A. INC	Montebello	7.46	0.01	0.18
108701	BALL FOSTER GLASS CONTAINER CO.	El Monte	7.30	0.09	0.07
117002	EQUILON ENTERPRISES,LLC	Wilmington	7.30	0.03	0.07
131003	BP WEST COAST PRODUCTS LLC	Carson	7.28	0.30	0.08
800113	ROHR IND INC	Riverside	7.20	0.86	0.02
800236	LA CO., SANITATION DIST UNIT NO.01	Carson	7.20	0.17	0.12
49387	UNIV CAL RIVERSIDE	Riverside	7.13	0.00	0.04
57094	G S ROOFING PRODUCTS CO INC	Wilmington	7.00	0.01	0.01
140499	AMERESCO HUNTINGTON BEACH, LLC	Hunt. Beach	7.00	<0.01	<0.01
55449	BKK CORPORATION, LANDFILL DIVISION GNRL	W. Covina	6.90	0.01	0.10
800372	EQUILON ENTERPRISES,LLC	Carson	6.90	0.44	0.07
5723	AEROCHEM INC	Orange	6.70	0.02	0.10
34764	CADDOCK ELECTRONICS, INC.	Riverside	6.70	0.01	0.09
8570	EMBEE INC	Santa Ana	6.62	0.21	0.58
17301	OR CO., SANITATION DIST	Fountain Valley	6.60	0.39	0.34
6643	TECHNICOLOR, INC	N. Hollywood	6.53	0.03	0.08
141585	RESOLUTION SPECIALTY MATERIALS, LLC	Lynwood	6.50	0.13	1.60
11726	GE ENGINE SERVICES	Ontario	6.46	0.12	0.59
2852	WALT DISNEY CO	Burbank	6.40	0.02	0.02
800066	HITCO	Gardena	6.40	0.34	0.05

Appendix A. Continued.

Facility ID	Facility Name	City	Cancer Risk in a million	Acute Hazard Index	Chronic Hazard Index
1226	HYATT DIE CAST & ENGINEERING CORP	Cypress	6.24	<0.01	0.12
800067	BOEING SATELLITE SYSTEMS INC	El Segundo	6.22	0.03	0.08
146570	ROHM AND HAAS CHEMICALS LLC	La Mirada	6.20	0.54	0.76
45262	LA CO, SANITATION DISTRICT UNIT NO.02,Scholl Canyon Landfill	Glendale	6.17	0.01	0.05
800026	ULTRAMAR INC.	Wilmington	6.08	0.80	0.07
800267	DV INDUSTRIES, INC.	Lynwood	6.06	<0.01	0.01
140961	GKN AEROSPACE TRANSPARENCY SYS INC	Garden Grove	6.00	<0.01	0.49
800022	CALNEV PIPE LINE CO	Bloomington	5.90	0.00	0.07
800198	ULTRAMAR INC	Wilmington	5.90	0.01	0.09
800279	SFPP, L.P.	Orange	5.85	0.00	0.24
8578	ASSOCIATED CONCRETE PROD. INC	Santa Ana	5.80	0.13	0.57
136148	E/M CORP, GREAT LAKES CHEMICAL CORP SUB	N Hollywood	5.80	0.28	0.57
800129	SO PACIFIC PIPELINES INC	Rialto	5.75	<0.01	0.02
140798	ARROWHEAD BRASS PROD. INC	Los Angeles	5.70	0.26	0.04
800288	UNIV CAL IRVINE UNIT NO 01	Irvine	5.64	0.00	0.07
22410	PALACE PLATING	Los Angeles	5.60	0.73	0.38
38971	RICOH ELECTRONICS INC	Irvine	5.60	0.02	0.39
43201	SNOW SUMMIT SKI CORP	Big Bear Lake	5.53	0.01	0.01
14146	MAC GREGOR YACHT CORP	Costa Mesa	5.50	0.00	0.10
54424	L & L CUSTOM SHUTTERS	Placentia	5.50	0.15	0.21
800409	TRW INC.	Redondo Beach	5.48	0.45	0.24
800196	AMERICAN AIRLINES, INC.	Los Angeles	5.40	0.86	0.08
800171	MOBIL OIL CO	Vernon	5.33	0.07	0.02
134018	INDUSTRIAL CONTAINER SERVICES	Montebello	5.24	0.57	0.23
4477	SOUTHERN CALIFORNIA EDISON COMPANY	Avalon	4.98	0.05	0.20
109198	TORCH OPERATING CO. (STEARNS GAS CO)	Brea	4.97	0.05	0.01
103888	A J INDUSTRIES INC, SARGENT-FLETCHER CO	El Monte	4.90	0.16	0.02
11192	HI-SHEAR CORP	Torrance	4.80	0.04	0.02
800038	DOUGLAS AIRCRAFT CO	Long Beach	4.80	0.15	0.11
800264	EDGINGTON OIL, CO.	Long Beach	4.78	0.01	0.01
101977	AMERIGAS PROPANE L.P.	Long Beach	4.70	0.59	0.97
3950	CROWN CORK & SEAL COMPANY, INC.	La Mirada	4.60	0.00	0.11
83102	LIGHT METALS	Industry	4.50	0.04	2.70
37336	COMMERCE REFUSE TO ENERGY FACILITY	Commerce	4.40	0.03	0.08
136395	THOMASON MECHNICAL CORP, BENDER MACHINE	Vernon	4.40	0.99	0.02

Appendix A. Continued.

Facility ID	Facility Name	City	Cancer Risk in a million	Acute Hazard Index	Chronic Hazard Index
800041	DOW U.S.A.	Torrance	4.40	0.09	0.01
93346	COOPER DRUM CO	S. El Monte	4.30	0.09	0.16
115240	MARCHEM TECHNOLOGIES, LONZA INC	Long Beach	4.30	0.28	0.01
131249	BP WEST COAST PRODUCTS LLC	Wilmington	4.30	0.08	0.18
800150	US GOVT., AF DEPT, MARCH AFB	Riverside	4.22	0.07	0.04
124506	BOEING ELECTRON DYNAMIC DEVICES	Torrance	4.17	0.46	0.07
6459	HONEYWELL INTERNATIONAL INC.	Vernon	4.13	0.01	0.01
18439	ACE PLATING CO INC	Los Angeles	4.08	0.58	0.19
118406	CARSON COGENERATION COMPANY	Carson	3.86	0.16	0.01
45489	GUIDANT CORP	Temecula	3.80	1.31	0.01
126060	STERIGENICS US, LLC	Ontario	3.80	0.00	0.01
8820	REULAND ELECTRIC CO. H.BRITTON LEES	Industry	3.70	<0.01	<0.01
9114	SOMITEX PRINTS OF CALIFORNIA	Industry	3.70	0.06	<0.01
17325	ACE CLEARWATER ENTERPRISES	Paramount	3.70	0.01	0.00
106838	VALLEY-TODECO, INC	Sylmar	3.70	0.20	0.20
105598	SENIOR FLEXONICS INC	Burbank	3.64	0.98	0.49
7427	OWENS-BROCKWAY GLASS CONTAINER	Vernon	3.60	0.01	0.06
800007	ALLIED SIGNAL INC, El Segundo	El Segundo	3.58	0.02	0.53
126197	ION BEAM APPLICATIONS INC.	Los Angeles	3.56	<0.01	0.01
127568	ENGINEERED POLYMER SOLUTION	Montebello	3.53	0.05	0.48
100844	MEDALLION CALIFORNIA PROPERTIES CO	Newhall	3.51	0.02	0.20
140811	DUCOMMUN AEROSTRUCTURES INC	Monrovia	3.50	0.01	0.01
8015	ANADITE INC	South Gate	3.48	0.63	0.78
9163	INLAND EMPIRE UTILITIES AGENCY	Ontario	3.44	0.25	0.01
104013	AERA ENERGY LLC	Brea	3.40	0.05	0.00
8961	HUCK INTERNATIONAL INC	Carson	3.30	0.00	0.02
126191	ION BEAM APPLICATIONS INC.	Los Angeles	3.29	<0.01	0.00
800063	GROVER PROD. CO	Los Angeles	3.29	0.88	0.07
6384	LA CO., RANCHO LOS AMIGOS MEDICAL CENTER	Downey	3.14	0.01	0.06
800362	CONOCO-PHILLIPS CO.	Carson	3.10	0.67	0.26
11435	THE PQ CORP	South Gate	3.00	0.00	0.01
800395	BP WEST COAST PRODUCTS, ARCO CARSON	Carson	3.00	<0.01	0.02
10005	ELECTRONIC CHROME GRINDING CO, INC.	Santa Fe Springs	2.96	0.24	0.06
18452	UCLA (REGENTS OF UC)	Los Angeles	2.91	0.01	0.11
2613	US GOVT, NAVY DEPT, NAVAL WEAPONS STN	Seal Beach	2.90	0.11	0.00
16660	MC DONNELL DOUGLAS SPACE SYS CO. sub of BOEING CO.	Hunt. Beach	2.89	0.23	0.05

Appendix A. Continued.

Facility ID	Facility Name	City	Cancer Risk in a million	Acute Hazard Index	Chronic Hazard Index
116868	EQUILON ENTERPRISES,LLC	Rialto	2.88	0.00	0.04
800035	CONTINENTAL AIRLINES INC	Los Angeles	2.83	0.01	0.13
48274	FENDER MUSICAL INST	Corona	2.81	0.03	0.37
550	LA CO., INTERNAL SERVICE DEPT	Los Angeles	2.80	<0.01	<0.01
151798	TESORO REFINING AND MARKETING CO.	Carson	2.77	0.14	0.00
151984	TESORO REFINING AND MARKETING CO.	Wilmington	2.75	0.00	0.01
800030	CHEVRON U.S.A. INC	El Segundo	2.73	0.29	0.13
5887	ANABOLIC INC	Irvine	2.70	0.03	0.00
16642	ANHEUSER-BUSCH INC.(LA BREWERY)	Van Nuys	2.70	0.02	0.13
25440	ROBERTSHAW CONTROLS CO, GRAYSON CONTROLS	Long Beach	2.70	0.00	0.96
27701	CADDOCK ELECTRONICS, INC.	Riverside	2.70	0.02	0.06
46268	CALIFORNIA STEEL INDUSTRIES, INC.	Fontana	2.70	0.16	0.31
115315	RELIANT ENERGY ETIWANDA,LLC	Etiwanda	2.67	0.01	0.17
133987	PLAINS EXPLORATION & PRODUCTION CO. LP	Inglewood	2.65	0.01	0.07
35483	WARNER BROTHERS STUDIO FACILITIES	Burbank	2.60	0.10	0.26
7949	CUSTOM FIBERGLASS MFG CO/CUSTOM HARDTOP	Long Beach	2.50	<0.01	<0.01
79682	RAMCAR BATTERIES INC	Commerce	2.43	0.04	0.17
800278	SFPP, L.P.	Carson	2.43	0.00	0.10
18188	PLASMA TECHNOLOGY INC.	Torrance	2.40	0.11	0.00
18508	AIR PROD & CHEM INC, PACIFIC ANCHOR CHEM	Los Angeles	2.40	0.10	0.81
800202	UNIVERSAL STUDIOS INC	Universal City	2.40	<0.01	0.03
800387	CALIFORNIA INSTITUTE OF TECHNOLOGY	Pasadena	2.40	0.05	0.00
152033	TESORO REFINING AND MARKETING CO.	Long Beach	2.39	0.00	0.01
133405	BODYCOTE INC./BODYCOTE THERMAL PROCESSING	Los Angeles	2.36	0.03	0.20
1208	MICROSEMI CORPORATION	Santa Ana	2.30	0.01	0.01
124838	EXIDE TECHNOLOGIES	Vernon	2.30	0.53	0.04
800056	GATX STORAGE TERMINALS CORP	San Pedro	2.30	0.00	0.03
103659	FOUR MEDIA CO.	Burbank	2.22	0.61	0.04
99773	CYTEC FIBERITE INC.	Anaheim	2.20	0.04	0.19
9668	DELUXE LABORATORIES INC, DELUXE LABORATOR	Hollywood	2.10	0.01	0.02
18931	TAMCO	Rancho Cucamonga	2.04	0.01	0.24
142267	FS PRECISION TECH LLC	Rancho Dominguez	2.03	0.08	0.15
800181	CALIFORNIA PORTLAND CEMENT CO	Colton	2.00	<0.01	0.39
2605	3M CO	Northridge	1.98	0.40	0.38

Appendix A. Continued.

Facility ID	Facility Name	City	Cancer Risk in a million	Acute Hazard Index	Chronic Hazard Index
14502	VERNON UTILITY DEPARTMENT	Vernon	1.98	0.01	0.01
54627	HICKORY SPRINGS OF CAL INC	Commerce	1.95	0.01	0.48
800325	TIDELANDS OIL PRODUCTION CO (L.B. Oil Co)	Long Beach	1.90	0.07	0.62
10245	LA CITY SANITATION BUREAU, TERMINAL ISLAN	San Pedro	1.83	0.02	0.03
23559	JOHNSON CONTROLS BATTERY GROUP INC	Fullerton	1.80	0.01	0.08
800037	DEMENNO/KERDOON	Compton	1.80	0.00	0.00
800189	DISNEYLAND RESORT	Anaheim	1.80	0.10	0.08
800003	HONEYWELL INTERNATIONAL INC	Torrance	1.77	0.00	0.01
1947	THUMS LONG BEACH CO, UNIT NO.01	Long Beach	1.70	<0.01	0.14
8309	CAMBRO MANUFACTURING CO	Hunt. Beach	1.70	0.00	0.15
22467	LEFIELL MFG CO	Santa Fe Springs	1.70	0.75	0.17
82512	BREA CANYON OIL CO	Wilmington	1.70	0.01	<0.01
17418	ALUMINUM COMPANY OF AMERICA	Vernon	1.60	0.30	0.30
119907	BERRY PETROLEUM	Santa Clarita	1.60	0.20	0.73
133660	HAYDEN INDUSTRIAL PRODUCTS	Corona	1.60	0.82	0.44
107350	N O-RING CORPORATION	Downey	1.53	0.00	0.01
2638	OCCIDENTAL COLLEGE	Los Angeles	1.50	0.07	0.01
126536	CONSOLIDATED FOUNDRIES, POMONA	Pomona	1.50	0.00	0.02
25070	LA CO., SANITATION DISTRICT	Whittier	1.40	<0.01	<0.01
44577	LONG BEACH CITY, SERRF PROJECT	Long Beach	1.40	0.00	0.03
82513	BREA CANYON OIL COMPANY INC	Harbor City	1.40	0.02	<0.01
800408	TRW INC.	Manhattan Beach	1.37	0.92	0.10
3968	TABC INC.	Long Beach	1.35	0.05	0.22
62679	KOP-COAT INC	Vernon	1.33	0.00	0.49
123087	INDALEX WEST INC.	Industry	1.27	0.00	0.03
126544	PAC FOUNDRIES INDUSTRY	Industry	1.27	0.59	0.09
2526	CHEVRON USA INC	Van Nuys	1.25	<0.01	0.01
22551	THUMS LONG BEACH CO, UNIT NO.04	Long Beach	1.20	0.00	0.01
42633	LA CO., SANITATION DIST, Spadra Landfill	Walnut	1.20	<0.01	<0.01
106009	VENOCO INC.	Beverly Hills	1.16	0.05	0.00
152054	LINN WESTERN OPERATING INC.	Brea	1.14	<0.01	0.12
124806	EXIDE TECHNOLOGIES	Industry	1.00	0.00	0.04
6670	TRU-CUT, INC.	Los Angeles	<1	0.00	0.04
800127	THE GAS CO.	Montebello	0.99(c)	2.53(c)	0.22(c)

Note:

(c) Risk estimates in the draft HRA.

Appendix A. Continued.

Facility ID	Facility Name	City	Cancer Risk in a million	Acute Hazard Index	Chronic Hazard Index
7730	E R CARPENTER CO INC	Riverside	0.96	0.03	1.34
20375	PRUDENTIAL OVERALL SUPPLY	Riverside	0.96	0.03	0.08
47056	MYERS CONTAINER CORP	Huntington Park	0.90	0.23	2.00
800301	ITT GILFILLAN UNIT NO.01	Van Nuys	0.86	0.12	0.19
3134	THUMS LONG BEACH CO, UNIT NO.05	Long Beach	0.84	<0.01	<0.01
18378	GRUBER SYSTEMS, INC.	Valencia	0.83	0.14	0.10
22556	THUMS LONG BEACH CO, UNIT NO.02	Long Beach	0.80	<0.01	<0.01
111415	VAN CAN CO, SUBSIDIARY OF VAN CAMP SEAFO	Fontana	0.80	<0.01	0.08
120088	BREITBURN ENERGY CO.	Santa Fe Springs	0.79	0.01	0.04
127642	EDWARDS LIFESCIENCES LLC	Irvine	0.75	<0.01	0.00
22373	CONTAINER CORPORATION OF AMERICA	Los Angeles	0.74	<0.01	<0.01
24060	TOMKINS INDUSTRIES INC-LASCO PRODS GROUP	Anaheim	0.72	<0.01	0.02
800091	MOBIL OIL CORP	Anaheim	0.72	0.01	0.00
772	DEFT INC	Irvine	0.70	<0.01	<0.01
24756	CRANE CO, HYDRO-AIRE DIV	Burbank	0.63	0.04	0.05
115394	AES ALAMITOS, LLC	Long Beach	0.63	0.00	0.02
134931	ALCOA GLOBAL FASTENERS, INC.	Fullerton	0.61	1.90	0.02
24957	GLENDALE CITY	Glendale	0.59	0.00	0.02
15647	CUSTOM ENAMELERS INC	Fountain Valley	0.55	0.11	0.02
3093	LA CO., OLIVE VIEW/UCLA MEDICAL CENTER	Sylmar	0.53	0.00	0.02
21895	AC PRODUCTS, INC.	Placentia	0.53	0.00	0.00
6281	US GOVT,MARINE CORPS AIR STATION,EL TORO	El Toro	0.51	<0.01	<0.01
1634	STEELCASE INC, WESTERN DIV	Tustin	0.50	<0.01	<0.01
39388	THUMS LONG BEACH CO, UNIT NO.03	Long Beach	0.50	<0.01	<0.01
61160	GE ENGINE SERVICES	Ontario	0.50	0.70	0.01
133046	PRECISION SPECIALTY METALS, INC.	Los Angeles	0.45	0.38	0.15
43436	TIMCO	Fontana	0.43	0.00	0.43
18990	LIFE PAINT COMPANY	Santa Fe Springs	0.41	0.02	0.00
12660	GOLDSHIELD FIBERGLASS, INC, PLANT #58	Fontana	0.40	0.01	0.05
115536	AES REDONDO BEACH, LLC	Redondo Beach	0.40	0.01	0.04
122295	FALCON FOAM, A DIV OF ALTAS ROOFING	Los Angeles	0.40	0.00	0.00
115663	EL SEGUNDO POWER, LLC	El Segundo	0.34	0.00	0.01
25638	BURBANK CITY, PUB SERV DEPT	Burbank	0.33	0.33	0.01
124805	EXIDE TECHNOLOGIES	Commerce	0.33	0.00	0.04

Appendix A. Continued.

Facility ID	Facility Name	City	Cancer Risk in a million	Acute Hazard Index	Chronic Hazard Index
112192	CONSOLIDATED DRUM RECONDITIONING CO. INC.	South Gate	0.31	0.00	0.00
800343	BOEING SATELLITE SYSTEMS, INC.	El Segundo	0.30	<0.01	0.21
24520	LA CO, SANITATION DISTRICTS	Rolling Hills Estates	0.29	<0.01	<0.01
99119	INTERPLASTIC CORP	Hawthorne	0.28	0.05	0.32
122300	BASF CORPORATION	Colton	0.28	0.56	0.02
19989	PARKER HANNIFIN AEROSPACE CORP	Irvine	0.27	0.01	0.00
107149	MARKLAND MANUFACTURING INC.	Santa Ana	0.26	0.06	0.12
16264	INTL COATINGS CO INC	Cerritos	0.17	0.00	0.00
800074	LA CITY, DWP HAYNES GENERATING STATION	Long Beach	0.17	0.00	0.01
48300	PRECISION TUBE BENDING	Santa Fe Springs	0.15	0.00	0.00
800168	PASADENA CITY, DWP	Pasadena	0.15	0.70	0.00
800193	LA CITY, DWP; VALLEY STM PLANT	Sun Valley	0.15	0.25	0.00
42676	AES PLACERITA, INC.	Newhall	0.11	0.08	0.01
114801	RHODIA INC.	Carson	0.11	0.02	0.05
115389	SO CAL EDISON CO	Hunt. Beach	0.11	0.00	0.00
7416	PRAXAIR INC	Wilmington	0.11	0.04	0.03
1992	PRUDENTIAL OVERALL SUPPLY	Van Nuys	0.10	0.00	0.00
16044	SPECIALTY ORGANICS INC	Irwindale	0.10	0.00	0.23
25012	AMADA MFG AMERICA, INC.	La Mirada	< 0.1	0.00	0.00
24812	FARMER BROS CO	Torrance	0.09	0.00	0.02
94872	METAL CONTAINER CORP.	Mira Loma	0.08	0.39	0.36
111110	BRISTOL FIBERLITE IND	Santa Ana	0.08	0.00	0.02
106325	HARBOR COGENERATION CO.	Wilmington	0.05	0.02	0.00
20144	CANON BUSINESS MACHINES INC	Costa Mesa	0.05	0.00	0.07
800320	AMVAC CHEMICAL CORP.	Los Angeles	0.04	0.07	0.34
45938	E.M.E. INC/ELECTRO MACHINE & ENGINEERING	Compton	0.04	0.00	<0.01
114847	FOAMEX L.P.	Compton	0.04	0.00	0.96
117785	BALL METAL BEVERAGE CONTAINER CORP.	Torrance	0.04	0.21	0.91
22229	PROCESSES BY MARTIN, INC.	Lynwood	0.04	0.00	0.00
800075	LA CITY, DWP SCATTERGOOD GENERATING STN.	Playa del Rey	0.03	0.00	0.00
145368	SEMMATERIALS LP	Fontana	0.02	0.33	0.01
115586	SUNDANCE SPAS	Chino	0.02	0.05	0.43
51620	WHEELABRATOR NORWALK ENERGY COMPANY	Norwalk	0.02	0.01	0.02
800009	AMERON PROTECTIVE COATINGS DIV	Brea	0.01	0.24	0.24

Appendix A. Continued.

Facility ID	Facility Name	City	Cancer Risk in a million	Acute Hazard Index	Chronic Hazard Index
55711	SUNLAW COGENERATION PARTNERS I	Vernon	0.01	0.01	0.00
124016	OAKITE PRODUCTS, INC.	La Mirada	0.00	0.14	0.08
55714	SUNLAW COGENERATION PARTNERS I	Vernon	0.00	0.01	0.00
119127	PRC DE SOTO INTERNATIONAL	Glendale	0.00	<0.01	<0.01
809	GARNER GLASS CO	Claremont	0.00	0.00	0.00
1732	INTL ELECTRONIC RESEARCH CORP	Burbank	0.00	0.00	0.00
1746	UNITED ALLOYS INC	Los Angeles	0.00	0.00	0.00
3084	CARDINAL INDUSTRIAL FINISHES INC	South El Monte	0.00	0.00	0.00
3578	PRUDENTIAL OVERALL SUPPLY	Carson	0.00	0.00	0.00
6163	OHLINE	Gardena	0.00	0.26	0.72
6315	FLO-KEM, INC.	Rancho Dominguez	0.00	0.03	0.61
7010	PRUDENTIAL OVERALL SUPPLY	Irvine	0.00	0.00	0.00
8560	PRUDENTIAL OVERALL SUPPLY CO	Commerce	0.00	0.00	0.00
8935	TRAIL RITE INC	Santa Ana	0.00	0.00	0.30
10656	NEWPORT LAMINATES	Santa Ana	0.00	<0.01	<0.01
19953	RISTON KELLER INC	Irvine	0.00	<0.01	0.01
21544	US GOVT, MARINE CORPS AIR STA @BLD	Tustin	0.00	0.00	0.00
22092	WESTERN TUBE & CONDUIT CORP	Long Beach	0.00	0.02	0.62
24647	J. B. I. INC	Compton	0.00	0.00	0.17
40806	ASSOCIATED PLASTICS INC	Riverside	0.00	0.73	0.20
51849	ELIMINATOR CUSTOM BOATS	Mira Loma	0.00	<0.01	<0.01
70021	XERXES CORP (A DELAWARE CORP)	Anaheim	0.00	<0.01	<0.01
102075	FOAMEX	Orange	0.00	0.39	0.43
141904	VERMAX, INC.	Pomona	0.00	<0.01	0.25
144677	PRATT & WHITNEY ROCKETDYNE/RUBY ACQ ENT	Canoga Park	0.00	<0.01	<0.01
800018	BAXTER HEALTH CARE CORP, BENTLEY DIV	Irvine	0.00	<0.01	0.37

Action Risk Levels: Cancer risk ≥ 25 in a million; Acute HI ≥ 3.0 ; Chronic HI ≥ 3.0

Public Notification Levels: Cancer risk ≥ 10 in a million; Acute HI > 1.0 ; Chronic HI > 1.0

Exemption Levels: Cancer risk < 1 in a million; Acute HI < 0.1 ; Chronic HI < 0.1

Appendix B
Rule Adoptions and Amendments in 2007

Rule 1470 – Requirements for Stationary Diesel-Fueled Internal Combustion and Other Compression Ignition Engines

Rule 1470 was amended to allow use of new Tier II engines for direct-drive fire pumps to allow manufacturers additional time to complete safety certifications for Tier III engines. Other amendments improved the clarity of Rule 1470 and consistency with the AQMD's Best Available Control Technology requirements for new engines enrolled in demand response programs. *[June 2007]*

Rule 1403 – Asbestos Emissions from Demolition/Renovation Activities

Rule 1403 limits asbestos emissions from building demolition and renovation activities, including the removal and associated disturbance of asbestos-containing materials, as well as the storage and disposal of asbestos-containing waste material generated or handled by these activities. This rule was amended to clarify rule intent, and improve enforceability and overall rule effectiveness. *[October 2007]*