

# **Advance Summary**

## **U.S. Crude Oil, Natural Gas, and Natural Gas Liquids Reserves**

### **2006 Annual Report**

**October 2007**

**Energy Information Administration**

Office of Oil and Gas

U.S. Department of Energy

Washington, DC 20585

This report was prepared by the Energy Information Administration, the independent statistical and analytical agency within the Department of Energy. The information contained herein should not be construed as advocating or reflecting any policy position of the Department of Energy or any other organization.

**Released for printing October 31, 2007**

# Advance Summary: U.S. Crude Oil, Natural Gas, and Natural Gas Liquids Reserves 2006 Annual Report

Proved reserves of natural gas increased by 3 percent in 2006, rising to over 211 trillion cubic feet, the highest level since 1976. Additions to reserves replaced 136 percent of the dry natural gas produced in 2006. This was the eighth year in a row that U.S. natural gas proved reserves have increased.

## As of December 31, 2006 proved reserves were:

<b>Crude Oil</b> (million barrels)	
2005	21,757
2006	20,972
Decrease	-3.6%
<b>Dry Natural Gas</b> (billion cubic feet)	
2005	204,385
2006	211,085
Increase	+3.3%
<b>Natural Gas Liquids</b> (million barrels)	
2005	8,165
2006	8,472
Increase	+3.8%

U.S. crude oil proved reserves declined 4 percent in 2006. The Gulf of Mexico Federal Offshore and Alaska, two of the largest oil-producing areas, respectively reported 10 and 7 percent declines in crude oil proved reserves. This was due to downward revisions and fewer new discoveries.

Proved reserves are the estimated quantities which geological and engineering data demonstrate with reasonable certainty to be recoverable in future years from known reservoirs under existing economic and operating conditions. Petroleum engineering and geological judgment are required in estimating proved reserves; therefore the results are not precise measurements.

## Natural Gas

Texas led the nation in natural gas reserves additions in 2006 with a 9 percent increase in dry gas proved

reserves due to rapid development of Barnett Shale reservoirs in the Newark East Field. Advances in horizontal drilling and hydraulic fracturing technology and relatively high natural gas prices supported this development. Alaska and Utah were second and third for dry natural gas proved reserves additions in 2006.

Total U.S. natural gas production increased in 2006 due to production increases in Texas (Barnett Shale), Louisiana, and the Rocky Mountain states (Colorado, Wyoming, Utah, and Montana). Gulf of Mexico natural gas production declined the most with a 6 percent drop.

Total discoveries of dry natural gas reserves attributed to the drilling of exploratory wells, which include field extensions, new field discoveries, and new reservoir discoveries in old fields, were 23,342 billion cubic feet in 2006. This was 35 percent more than the prior 10-year average (17,255 billion cubic feet) and 1 percent more than in 2005.

The majority of natural gas total discoveries in 2006 were from extensions to existing gas fields. Field extensions were 21,778 billion cubic feet, 3 percent more than in 2005 and 61 percent more than the prior 10-year average (13,522 billion cubic feet).

New field discoveries were 409 billion cubic feet, 57 percent less than the volume discovered in 2005 and 75 percent less than the prior 10-year average (1,659 billion cubic feet).

New reservoir discoveries in old fields were 1,155 billion cubic feet, 4 percent less than 2005 and 44 percent less than the prior 10-year average (2,074 billion cubic feet).

Natural gas net revisions and adjustments were a net loss of 1,093 billion cubic feet in 2006. The prior occurrence of negative net revisions was in 1988. The net of sales and acquisitions of dry natural gas proved reserves was 2,996 billion cubic feet.

Coalbed natural gas reserves decreased 1 percent in 2006 and accounted for 9 percent of U.S. dry natural gas reserves. Coalbed natural gas production

increased 2 percent in 2006 and accounted for 9 percent of U.S. dry natural gas production.

Other 2006 natural gas events of note:

- Natural gas prices at the wellhead declined 12 percent in 2006 to an average of \$6.42 per thousand cubic feet, as compared to \$7.33 per thousand cubic feet in 2005.
- Gas well completions (exploratory and development) were up 17 percent from 2005.

## Crude Oil

U.S. crude oil proved reserves declined 4 percent in 2006. The Gulf of Mexico Federal Offshore and Alaska, two of the largest U.S. oil-producing areas, reported 10 and 7 percent declines in crude oil proved reserves. This was due to downward revisions and fewer new discoveries. Utah reported the largest increase in crude oil reserves, adding 78 million barrels (a 30 percent increase from 2005), followed by Colorado and New Mexico. Reserves additions of crude oil did not keep pace with production – operators replaced only 52 percent of 2006 crude oil production with reserves additions.

U.S. crude oil production declined 5 percent in 2006 due mostly to lower Alaskan production. Part of the decline resulted from an August 2006 shut-in of producing wells in half of Prudhoe Bay Field for inspection and repair of corrosion in the gathering system. For the second year in a row Montana had the largest annual oil production increase of any State (6 million barrels; a 20 percent increase) owing to continued development of the Bakken Formation in the Elm Coulee Field. This relatively new and important oil field is difficult to produce and requires cutting-edge technology for economic production.

Total discoveries of crude oil were 577 million barrels in 2006, 49 percent less than the prior 10-year average and 45 percent less than 2005's discoveries of 1,051 million barrels.

The majority of crude oil total discoveries in 2006 came from extensions to fields in Texas, Alaska, the Gulf of Mexico Federal Offshore, Montana, California, New Mexico, and Louisiana.

Operators discovered 504 million barrels in extensions in 2006, 37 percent less than in 2005 and 10 percent less than the prior 10-year average (558 million barrels).

New field discoveries accounted for 30 million barrels of crude oil reserves additions. Seventy percent of these discoveries (21 of 30 million barrels) were in the Gulf of Mexico Federal Offshore. This

was 85 percent less than the new field discoveries of 2005 and only 7 percent of the prior 10-year average (428 million barrels).

New reservoir discoveries in old fields were 43 million barrels, 5 percent more than 2005 and 71 percent less than the prior 10-year average (149 million barrels).

Reserves additions are the sum of total discoveries, revisions, adjustments, sales, and acquisitions. In 2006, reserves additions were 867 million barrels, 59 percent less than the volume of reserves additions in 2005 and 54 percent less than the prior 10-year average (1,876 million barrels).

Crude oil net revisions and adjustments were 96 million barrels, 88 percent less than the net revisions and adjustments of 2005 and only 13 percent of the prior 10-year average (759 million barrels). The net of sales and acquisitions of crude oil proved reserves was 194 million barrels.

Other 2006 crude oil events of note:

- The annual average domestic first purchase price for crude oil increased 19 percent from \$50.28 per barrel in 2005 to \$59.69 per barrel.
- Oil well completions (exploratory and development) were up 28 percent from 2005.

## Natural Gas Liquids

Natural gas liquids reserves are the sum of lease condensate reserves and natural gas plant liquids reserves. Natural gas liquids proved reserves increased 4 percent in 2006. Operators replaced 138 percent of U.S. natural gas liquids production with reserves additions.

Total proved reserves of liquid hydrocarbons (crude oil plus natural gas liquids) were 29,444 million barrels in 2006, a 2 percent decrease from the 2005 level. Natural gas liquids represented 29 percent of total liquid hydrocarbon proved reserves in 2006.

## Data

These estimates are based upon analysis of data from Form EIA-23, Annual Survey of Domestic Oil and Gas Reserves, filed by 1,501 operators of oil and gas wells, and Form EIA-64A, Annual Report of the Origin of Natural Gas Liquids Production, filed by operators of 500 active natural gas processing plants. The U.S. proved reserves estimates for crude oil and natural gas are associated with sampling errors of less than 1 percent.

**Table 1. Total U.S. Proved Reserves of Crude Oil, Dry Natural Gas, and Natural Gas Liquids, 1996-2006**

Year	Adjustments (1)	Net Revisions (2)	Revisions <sup>a</sup> and Adjustments (3)	Net of Sales <sup>b</sup> and Acquisitions (4)	Extensions (5)	New Field Discoveries (6)	New Reservoir Discoveries in Old Fields (7)	Total <sup>c</sup> Discoveries (8)	Estimated Production (9)	Proved <sup>d</sup> Reserves 12/31 (10)	Change from Prior Year (11)
<b>Crude Oil (million barrels of 42 U.S. gallons)</b>											
1996	175	737	912	NA	543	243	141	927	2,173	22,017	-334
1997	520	914	1,434	NA	477	637	119	1,233	2,138	22,546	+529
1998	-638	518	-120	NA	327	152	120	599	1,991	21,034	-1,512
1999	139	1,819	1958	NA	259	321	145	725	1,952	21,765	+731
2000	143	746	889	-20	766	276	249	1,291	1,880	22,045	+280
2001	-4	-158	-162	-87	866	1,407	292	2,565	1,915	22,446	+401
2002	416	720	1,136	24	492	300	154	946	1,875	22,677	+231
2003	163	94	257	-398	426	705	101	1,232	1,877	21,891	-786
2004	74	420	494	23	617	33	132	782	1,819	21,371	-520
2005	221	569	790	278	805	205	41	1,051	1,733	21,757	+386
2006	94	2	96	194	504	30	43	577	1,652	20,972	-785
<b>Dry Natural Gas (billion cubic feet, 14.73 psia, 60° Fahrenheit)</b>											
1996	3,785	4,086	7,871	NA	7,757	1,451	3,110	12,318	18,861	166,474	+1,328
1997	-590	4,902	4,312	NA	10,585	2,681	2,382	15,648	19,211	167,223	+749
1998	-1,635	5,740	4,105	NA	8,197	1,074	2,162	11,433	18,720	164,041	-3,182
1999	982	10,504	11,486	NA	7,043	1,568	2,196	10,807	18,928	167,406	+3,365
2000	-891	6,962	6,071	4,031	14,787	1,983	2,368	19,138	19,219	177,427	+10,021
2001	2,742	-2,318	424	2,630	16,380	3,578	2,800	22,758	19,779	183,460	+6,033
2002	3,727	937	4,664	380	14,769	1,332	1,694	17,795	19,353	186,946	+3,486
2003	2,841	-1,638	1,203	1,034	16,454	1,222	1,610	19,286	19,425	189,044	+2,098
2004	-114	744	630	1,844	18,198	759	1,206	20,163	19,168	192,513	+3,469
2005	1,887	2,699	4,586	2,544	21,050	942	1,208	23,200	18,458	204,385	+11,872
2006	743	-1,836	-1,093	2,996	21,778	409	1,155	23,342	18,545	211,085	+6,700
<b>Natural Gas Liquids (million barrels of 42 U.S. gallons)</b>											
1996	474	175	649	NA	451	65	109	625	850	7,823	+424
1997	-15	289	274	NA	535	114	90	739	864	7,973	+150
1998	-361	208	-153	NA	383	66	88	537	833	7,524	-449
1999	99	727	826	NA	313	51	88	452	896	7,906	+382
2000	-83	459	376	145	645	92	102	839	921	8,345	+439
2001	-429	-132	-561	102	717	138	142	997	890	7,993	-352
2002	62	31	93	54	612	48	78	738	884	7,994	+1
2003	-338	-161	-499	30	629	35	72	736	802	7,459	-535
2004	273	97	370	112	734	26	54	814	827	7,928	+469
2005	-89	21	-68	156	863	32	42	937	788	8,165	+237
2006	173	-165	8	117	924	16	53	993	811	8,472	+307

<sup>a</sup>Revisions and adjustments = Col. 1 + Col. 2.

<sup>b</sup>Net of sales and acquisitions = acquisitions - sales.

<sup>c</sup>Total discoveries = Col. 5 + Col. 6 + Col. 7.

<sup>d</sup>Proved reserves = Col. 10 from prior year + Col. 3 + Col. 4 + Col. 8 - Col. 9.

NA=Not available.

Notes: Old means discovered in a prior year. New means discovered during the report year. The production estimates in this table are based on data reported on Form EIA-23, "Annual Survey of Domestic Oil and Gas Reserves" and Form EIA-64A, "Annual Report of the Origin of Natural Gas Liquids Production." They may differ from the official EIA production data for crude oil, natural gas, and natural gas liquids for 2006 contained in the *Petroleum Supply Annual 2006*, DOE/EIA-0340(06) and the *Natural Gas Annual 2006*, DOE/EIA-0131(06).

**Table 2. Crude Oil Proved Reserves, Reserves Changes, and Production, 2006**  
(Million Barrels of 42 U.S. Gallons)

State and Subdivision	Published Proved Reserves 12/31/05	Changes in Reserves During 2006							New Reservoir Discoveries in Old Fields (+)	Estimated Production (-)	Proved Reserves 12/31/06
		Adjustments (+,-)	Revision Increases (+)	Revision Decreases (-)	Sales (-)	Acquisitions (+)	Extensions (+)	New Field Discoveries (+)			
Alaska .....	4,171	1	84	235	0	0	100	0	0	242	3,879
<b>Lower 48 States .....</b>	<b>17,586</b>	<b>93</b>	<b>1,506</b>	<b>1,353</b>	<b>982</b>	<b>1,176</b>	<b>404</b>	<b>30</b>	<b>43</b>	<b>1,410</b>	<b>17,093</b>
Alabama .....	55	2	2	4	19	14	0	0	0	5	45
Arkansas .....	40	5	3	5	0	0	0	0	0	6	37
California .....	3,435	13	243	125	120	130	27	0	8	222	3,389
Coastal Region Onshore .....	374	1	22	10	46	47	0	0	2	15	375
Los Angeles Basin Onshore .....	300	6	83	23	47	49	6	0	6	16	364
San Joaquin Basin Onshore .....	2,556	6	115	76	27	34	16	0	0	176	2,448
State Offshore .....	205	0	23	16	0	0	5	0	0	15	202
Colorado .....	250	4	30	7	72	68	19	0	0	18	274
Florida .....	59	1	0	20	0	0	0	0	0	2	38
Illinois .....	95	2	6	6	0	1	0	0	1	10	89
Indiana .....	16	-5	1	2	0	3	0	0	0	1	12
Kansas .....	281	9	23	20	1	1	3	1	1	35	263
Kentucky .....	23	3	1	0	0	0	0	0	0	2	25
Louisiana .....	432	13	47	31	44	39	23	0	2	53	428
North .....	68	8	5	8	2	2	3	0	0	8	68
South Onshore .....	299	16	37	16	36	34	15	0	2	39	312
State Offshore .....	65	-11	5	7	6	3	5	0	0	6	48
Michigan .....	62	5	5	6	1	2	0	1	0	5	63
Mississippi .....	189	5	7	11	6	7	8	0	2	15	186
Montana .....	427	1	29	35	53	50	36	0	0	36	419
Nebraska .....	16	0	1	1	0	0	0	0	0	2	14
New Mexico .....	690	-2	66	45	64	90	26	0	0	56	705
East .....	682	-5	65	43	64	90	26	0	0	55	696
West .....	8	3	1	2	0	0	0	0	0	1	9
North Dakota .....	418	8	36	30	142	140	15	2	3	38	412
Ohio .....	46	1	5	1	0	1	1	0	0	4	49
Oklahoma .....	630	-21	51	68	29	45	10	0	0	49	569
Pennsylvania .....	14	5	3	2	0	0	2	0	0	2	20
Texas .....	4,919	50	340	312	100	198	128	1	2	355	4,871
RRC District 1 .....	65	5	7	3	20	24	8	0	0	10	76
RRC District 2 Onshore .....	62	12	7	9	2	2	1	0	0	8	65
RRC District 3 Onshore .....	179	11	21	20	7	10	9	1	1	25	180
RRC District 4 Onshore .....	40	7	2	15	1	0	1	0	0	4	30
RRC District 5 .....	24	1	4	1	0	0	0	0	0	4	24
RRC District 6 .....	168	8	8	36	0	18	6	0	0	15	157
RRC District 7B .....	80	-5	25	4	1	3	1	0	0	10	89
RRC District 7C .....	245	3	15	16	4	40	25	0	0	20	288
RRC District 8 .....	1,731	2	119	102	42	75	44	0	1	111	1,717
RRC District 8A .....	2,164	2	107	88	18	25	30	0	0	129	2,093
RRC District 9 .....	103	6	8	5	4	1	0	0	0	13	96
RRC District 10 .....	53	-2	17	11	1	0	3	0	0	6	53
State Offshore .....	5	0	0	2	0	0	0	0	0	0	3
Utah .....	256	0	55	12	42	76	16	2	0	17	334
West Virginia .....	21	2	6	4	0	0	0	0	0	2	23
Wyoming .....	704	-2	72	51	32	37	19	2	0	43	706
Federal Offshore .....	4,483	-3	471	555	257	272	71	21	24	431	4,096
Pacific (California) .....	441	0	29	6	0	0	2	0	1	26	441
Gulf of Mexico (Louisiana) .....	3,852	-2	397	520	202	215	68	21	18	347	3,500
Gulf of Mexico (Texas) .....	190	-1	45	29	55	57	1	0	5	58	155
Miscellaneous <sup>a</sup> .....	25	-3	3	0	0	2	0	0	0	1	26
<b>U.S. Total .....</b>	<b>21,757</b>	<b>94</b>	<b>1,590</b>	<b>1,588</b>	<b>982</b>	<b>1,176</b>	<b>504</b>	<b>30</b>	<b>43</b>	<b>1,652</b>	<b>20,972</b>

<sup>a</sup>Includes Arizona, Missouri, Nevada, New York, South Dakota, Tennessee, and Virginia.

Note: The production estimates in this table are based on data reported on Form EIA-23, "Annual Survey of Domestic Oil and Gas Reserves." They may differ from the official Energy Information Administration production data for crude oil for 2006 contained in the *Petroleum Supply Annual 2006, DOE/EIA-0340(06)*.

Source: Energy Information Administration, Office of Oil and Gas.

**Table 3. Dry Natural Gas Proved Reserves, Reserves Changes, and Production, 2006**  
(Billion Cubic Feet at 14.73 psia and 60° Fahrenheit)

State and Subdivision	Published Proved Reserves 12/31/05	Changes in Reserves During 2006									Proved Reserves 12/31/06
		Adjustments (+,-)	Revision Increases (+)	Revision Decreases (-)	Sales (-)	Acquisitions (+)	Extensions (+)	New Field Discoveries (+)	New Reservoir Discoveries in Old Fields (+)	Estimated Production (-)	
Alaska	8,171	-46	2,853	376	0	0	49	0	2	408	10,245
<b>Lower 48 States</b>	<b>196,214</b>	<b>789</b>	<b>17,980</b>	<b>22,293</b>	<b>22,850</b>	<b>25,846</b>	<b>21,729</b>	<b>409</b>	<b>1,153</b>	<b>18,137</b>	<b>200,840</b>
Alabama	3,965	-11	234	208	188	253	146	0	7	287	3,911
Arkansas	1,964	-26	101	113	4	5	491	7	32	188	2,269
California	3,228	-74	156	419	274	252	176	0	4	255	2,794
Coastal Region Onshore	268	-62	28	12	70	58	5	0	0	9	206
Los Angeles Basin Onshore	176	0	7	29	35	38	4	0	0	8	153
San Joaquin Basin Onshore	2,694	-12	112	371	169	156	166	0	1	232	2,345
State Offshore	90	0	9	7	0	0	1	0	3	6	90
Colorado	16,596	52	1,178	1,524	1,539	1,540	1,980	14	26	1,174	17,149
Florida	77	2	0	32	0	0	0	0	0	2	45
Kansas	4,314	89	807	1,020	18	13	93	0	3	350	3,931
Kentucky	2,151	-22	56	21	432	534	23	0	4	66	2,227
Louisiana	10,447	86	1,191	1,417	500	738	1,026	27	185	1,309	10,474
North	6,695	-27	603	759	57	189	619	0	4	552	6,715
South Onshore	3,334	135	526	607	388	523	328	10	148	674	3,335
State Offshore	418	-22	62	51	55	26	79	17	33	83	424
Michigan	2,910	112	460	291	48	27	86	1	5	197	3,065
Mississippi	755	-26	96	40	44	30	119	0	6	83	813
Montana	986	13	65	78	20	17	144	19	28	117	1,057
New Mexico	18,201	91	1,273	1,203	6,248	6,278	793	35	140	1,426	17,934
East	3,791	56	607	495	297	327	370	35	0	480	3,914
West	14,410	35	666	708	5,951	5,951	423	0	140	946	14,020
New York	349	33	22	38	55	52	5	45	0	50	363
North Dakota	453	18	70	31	53	40	30	1	3	52	479
Ohio	898	129	49	112	11	83	17	0	0	78	975
Oklahoma	17,123	-149	1,515	1,868	821	1,202	2,051	0	12	1,601	17,464
Pennsylvania	2,782	-117	185	224	6	234	359	13	0	176	3,050
Texas	56,507	835	6,392	7,853	4,603	6,366	9,467	80	253	5,608	61,836
RRC District 1	1,161	77	36	182	0	4	74	2	0	109	1,063
RRC District 2 Onshore	2,073	207	209	511	138	195	321	9	18	323	2,060
RRC District 3 Onshore	3,192	-5	411	472	407	389	384	20	70	532	3,050
RRC District 4 Onshore	8,761	250	844	1,857	1,156	1,184	1,138	23	86	1,157	8,116
RRC District 5	9,557	84	2,318	683	661	804	1,953	4	0	783	12,593
RRC District 6	8,976	69	854	1,741	511	856	1,357	1	0	774	9,087
RRC District 7B	802	-61	197	67	48	57	681	0	0	90	1,471
RRC District 7C	5,123	25	170	634	111	231	691	0	0	369	5,126
RRC District 8	5,993	43	511	714	845	1,065	488	2	7	480	6,070
RRC District 8A	1,366	34	114	135	11	5	19	0	0	102	1,290
RRC District 9	4,328	4	139	183	516	1,318	1,535	0	0	407	6,218
RRC District 10	4,910	95	573	639	128	198	826	2	0	450	5,387
State Offshore	265	13	16	35	71	60	0	17	72	32	305
Utah	4,295	-11	218	502	1,147	1,189	1,408	45	0	349	5,146
Virginia	2,018	25	234	14	133	154	114	6	0	102	2,302
West Virginia	4,459	-251	298	188	745	886	229	3	5	187	4,509
Wyoming	23,774	36	1,339	2,281	3,239	3,372	2,211	2	30	1,695	23,549
Federal Offshore <sup>a</sup>	17,831	-39	2,030	2,798	2,718	2,575	733	111	410	2,775	15,360
Pacific (California)	824	2	43	22	0	0	0	0	1	37	811
Gulf of Mexico (Louisiana) <sup>a</sup>	13,665	-37	1,606	2,201	1,532	1,341	530	82	343	1,973	11,824
Gulf of Mexico (Texas)	3,342	-4	381	575	1,186	1,234	203	29	66	765	2,725
Miscellaneous <sup>b</sup>	131	-6	11	18	4	6	28	0	0	10	138
<b>U.S. Total</b>	<b>204,385</b>	<b>743</b>	<b>20,833</b>	<b>22,669</b>	<b>22,850</b>	<b>25,846</b>	<b>21,778</b>	<b>409</b>	<b>1,155</b>	<b>18,545</b>	<b>211,085</b>

<sup>a</sup>Includes Federal offshore Alabama.

<sup>b</sup>Includes Arizona, Illinois, Indiana, Maryland, Missouri, Nebraska, Nevada, Oregon, South Dakota, and Tennessee.

Note: The production estimates in this table are based on data reported on Form EIA-23, "Annual Survey of Domestic Oil and Gas Reserves," and Form EIA-64A, "Annual Report of the Origin of Natural Gas Liquids Production." They may differ from the official Energy Information Administration production data for natural gas for 2006 contained in the *Natural Gas Annual 2006*, DOE/EIA-0131(06).

Source: Energy Information Administration, Office of Oil and Gas.

**Table 4. Natural Gas Proved Reserves, Reserves Changes, and Production, Wet After Lease Separation, 2006** (Billion Cubic Feet at 14.73 psia and 60° Fahrenheit)

State and Subdivision	Published Proved Reserves 12/31/05	Changes in Reserves During 2006									Proved Reserves 12/31/06
		Adjustments (+,-)	Revision Increases (+)	Revision Decreases (-)	Sales (-)	Acquisitions (+)	Extensions (+)	New Field Discoveries (+)	New Reservoir Discoveries in Old Fields (+)	Estimated Production (-)	
Alaska	8,237	-50	2,882	378	0	0	50	0	2	410	10,333
<b>Lower 48 States</b>	<b>205,071</b>	<b>996</b>	<b>18,758</b>	<b>23,361</b>	<b>23,904</b>	<b>27,082</b>	<b>22,784</b>	<b>425</b>	<b>1,195</b>	<b>18,963</b>	<b>210,083</b>
Alabama	4,006	-2	238	213	192	259	150	0	7	290	3,963
Arkansas	1,967	-28	101	114	4	5	492	7	33	188	2,271
California	3,384	-73	163	440	287	266	186	0	4	268	2,935
Coastal Region Onshore	277	-64	29	12	72	60	5	0	0	9	214
Los Angeles Basin Onshore	186	-1	7	31	37	41	4	0	0	8	161
San Joaquin Basin Onshore	2,831	-9	118	390	178	165	176	0	1	244	2,470
State Offshore	90	1	9	7	0	0	1	0	3	7	90
Colorado	17,122	42	1,215	1,571	1,587	1,588	2,042	15	27	1,211	17,682
Florida	87	1	0	35	0	0	0	0	0	3	50
Kansas	4,598	103	862	1,090	19	14	100	0	3	374	4,197
Kentucky	2,240	23	60	22	459	568	24	0	5	70	2,369
Louisiana	10,679	95	1,222	1,453	519	762	1,049	29	192	1,346	10,710
North	6,768	-20	610	768	57	191	626	0	4	559	6,795
South Onshore	3,478	134	548	632	404	544	341	11	154	701	3,473
State Offshore	433	-19	64	53	58	27	82	18	34	86	442
Michigan	2,961	112	467	295	48	27	88	1	5	201	3,117
Mississippi	758	-23	95	40	44	29	119	0	6	84	816
Montana	998	13	66	79	20	17	145	20	28	119	1,069
New Mexico	19,344	138	1,369	1,292	6,612	6,645	851	39	147	1,525	19,104
East	4,132	89	666	543	326	359	405	39	0	526	4,295
West	15,212	49	703	749	6,286	6,286	446	0	147	999	14,809
New York	349	32	22	38	55	52	5	45	0	49	363
North Dakota	508	20	79	34	60	45	34	1	4	58	539
Ohio	898	128	49	112	11	83	18	0	0	78	975
Oklahoma	18,146	-131	1,608	1,983	871	1,275	2,177	0	13	1,699	18,535
Pennsylvania	2,793	-117	186	225	6	235	361	14	0	177	3,064
Texas	60,178	891	6,708	8,348	4,906	6,807	10,090	84	265	5,964	65,805
RRC District 1	1,205	87	38	190	0	4	77	2	0	114	1,109
RRC District 2 Onshore	2,175	222	220	537	146	206	337	10	19	340	2,166
RRC District 3 Onshore	3,406	18	442	506	437	417	413	22	75	572	3,278
RRC District 4 Onshore	9,104	304	881	1,939	1,207	1,236	1,188	24	91	1,208	8,474
RRC District 5	9,611	72	2,328	686	664	807	1,962	4	0	786	12,648
RRC District 6	9,343	94	890	1,816	533	894	1,416	1	0	808	9,481
RRC District 7B	932	-95	222	76	54	65	770	0	0	101	1,663
RRC District 7C	5,702	49	190	708	124	258	772	0	0	412	5,727
RRC District 8	6,800	17	577	807	955	1,203	552	2	8	542	6,855
RRC District 8A	1,471	32	122	144	12	5	20	0	0	110	1,384
RRC District 9	4,734	-20	151	199	562	1,434	1,670	0	0	443	6,765
RRC District 10	5,430	98	632	705	141	218	913	2	0	497	5,950
State Offshore	265	13	15	35	71	60	0	17	72	31	305
Utah	4,359	-21	220	509	1,161	1,204	1,426	46	0	353	5,211
Virginia	2,018	25	234	14	133	154	114	6	0	102	2,302
West Virginia	4,572	-227	308	195	769	914	236	3	5	193	4,654
Wyoming	24,722	14	1,391	2,370	3,365	3,503	2,297	1	31	1,761	24,463
Federal Offshore <sup>a</sup>	18,252	-11	2,084	2,871	2,772	2,624	751	114	420	2,841	15,750
Pacific (California)	825	1	43	22	0	0	0	0	1	37	811
Gulf of Mexico (Louisiana) <sup>a</sup>	14,073	-10	1,658	2,272	1,581	1,384	547	85	353	2,036	12,201
Gulf of Mexico (Texas)	3,354	-2	383	577	1,191	1,240	204	29	66	768	2,738
Miscellaneous <sup>b</sup>	132	-8	11	18	4	6	29	0	0	9	139
<b>U.S. Total</b>	<b>213,308</b>	<b>946</b>	<b>21,640</b>	<b>23,739</b>	<b>23,904</b>	<b>27,082</b>	<b>22,834</b>	<b>425</b>	<b>1,197</b>	<b>19,373</b>	<b>220,416</b>

<sup>a</sup>Includes Federal offshore Alabama.

<sup>b</sup>Includes Arizona, Illinois, Indiana, Maryland, Missouri, Nebraska, Nevada, Oregon, South Dakota, and Tennessee.

Note: The production estimates in this table are based on data reported on Form EIA-23, "Annual Survey of Domestic Oil and Gas Reserves." They may differ from the official Energy Information Administration production data for natural gas for 2006 contained in the *Natural Gas Annual 2006*, DOE/EIA-0131(06).

Source: Energy Information Administration, Office of Oil and Gas.



**Table 5. Nonassociated Natural Gas Proved Reserves, Reserves Changes, and Production, Wet After Lease Separation, 2006 (Billion Cubic Feet at 14.73 psia and 60° Fahrenheit)**

State and Subdivision	Published Proved Reserves 12/31/05	Changes in Reserves During 2006							Estimated Production (-)	Proved Reserves 12/31/06	
		Adjustments (+,-)	Revision Increases (+)	Revision Decreases (-)	Sales (-)	Acquisitions (+)	Extensions (+)	New Field Discoveries (+)			New Reservoir Discoveries in Old Fields (+)
Alaska	1,875	-49	32	267	0	0	46	0	2	192	1,447
<b>Lower 48 States</b>	<b>183,197</b>	<b>1,049</b>	<b>16,236</b>	<b>20,690</b>	<b>22,178</b>	<b>25,122</b>	<b>21,978</b>	<b>385</b>	<b>1,130</b>	<b>16,900</b>	<b>189,329</b>
Alabama	3,977	-3	234	205	188	259	150	0	7	286	3,945
Arkansas	1,921	-31	99	112	4	5	492	7	33	183	2,227
California	799	-11	67	49	154	47	165	0	4	88	780
Coastal Region Onshore	8	0	0	0	2	0	0	0	0	0	6
Los Angeles Basin Onshore	0	0	0	0	0	0	0	0	0	0	0
San Joaquin Basin Onshore	790	-11	65	49	152	47	165	0	1	87	769
State Offshore	1	0	2	0	0	0	0	0	3	1	5
Colorado	15,796	44	981	1,536	1,009	1,009	1,929	15	27	1,115	16,141
Florida	0	0	0	0	0	0	0	0	0	0	0
Kansas	4,515	100	839	1,071	19	14	99	0	3	365	4,115
Kentucky	2,210	24	53	22	459	568	24	0	5	70	2,333
Louisiana	10,091	98	1,129	1,391	449	713	1,022	29	189	1,282	10,149
North	6,670	-18	597	757	57	190	626	0	4	550	6,705
South Onshore	3,051	127	476	586	338	498	321	11	151	653	3,058
State Offshore	370	-11	56	48	54	25	75	18	34	79	386
Michigan	2,808	112	406	290	45	24	88	0	5	183	2,925
Mississippi	738	-23	94	39	39	29	112	0	4	81	795
Montana	837	12	15	60	1	0	123	20	28	100	874
New Mexico	17,683	159	1,023	1,136	6,399	6,390	758	39	147	1,332	17,332
East	2,569	110	332	408	121	112	312	39	0	340	2,605
West	15,114	49	691	728	6,278	6,278	446	0	147	992	14,727
New York	346	33	22	38	55	52	5	45	0	49	361
North Dakota	165	18	12	10	1	0	16	0	0	18	182
Ohio	714	110	32	81	11	83	17	0	0	63	801
Oklahoma	17,337	-97	1,435	1,881	858	1,254	2,136	0	13	1,604	17,735
Pennsylvania	2,659	-129	183	214	6	235	337	14	0	166	2,913
Texas	53,175	875	5,953	7,636	4,751	6,401	9,768	80	241	5,370	58,736
RRC District 1	1,148	83	32	186	0	4	72	2	0	107	1,048
RRC District 2 Onshore	2,066	224	212	530	132	192	313	10	19	326	2,048
RRC District 3 Onshore	2,961	28	401	454	412	307	391	20	52	505	2,789
RRC District 4 Onshore	8,956	302	860	1,900	1,198	1,235	1,188	24	90	1,193	8,364
RRC District 5	9,560	72	2,316	685	664	807	1,961	4	0	780	12,591
RRC District 6	8,999	88	825	1,703	532	889	1,395	1	0	757	9,205
RRC District 7B	859	-94	212	72	53	62	765	0	0	90	1,589
RRC District 7C	4,665	42	110	653	108	138	673	0	0	336	4,531
RRC District 8	3,829	16	277	537	887	1,055	465	2	8	337	3,891
RRC District 8A	85	34	5	38	0	3	5	0	0	12	82
RRC District 9	4,608	-14	140	188	560	1,433	1,669	0	0	428	6,660
RRC District 10	5,177	81	548	655	136	216	871	0	0	468	5,634
State Offshore	262	13	15	35	69	60	0	17	72	31	304
Utah	4,051	-22	184	472	1,145	1,199	1,382	40	0	323	4,894
Virginia	2,018	25	234	14	133	154	114	6	0	102	2,302
West Virginia	4,553	-227	308	193	769	914	236	3	5	192	4,638
Wyoming	24,338	5	1,365	2,335	3,362	3,502	2,286	0	31	1,714	24,116
Federal Offshore <sup>a</sup>	12,348	-11	1,559	1,887	2,317	2,264	690	87	388	2,206	10,915
Pacific (California)	49	0	8	0	0	0	0	0	0	2	55
Gulf of Mexico (Louisiana) <sup>a</sup>	9,492	-10	1,274	1,445	1,261	1,150	487	58	329	1,574	8,500
Gulf of Mexico (Texas)	2,807	-1	277	442	1,056	1,114	203	29	59	630	2,360
Miscellaneous <sup>b</sup>	118	-12	9	18	4	6	29	0	0	8	120
<b>U.S. Total</b>	<b>185,072</b>	<b>1,000</b>	<b>16,268</b>	<b>20,957</b>	<b>22,178</b>	<b>25,122</b>	<b>22,024</b>	<b>385</b>	<b>1,132</b>	<b>17,092</b>	<b>190,776</b>

<sup>a</sup>Includes Federal offshore Alabama.

<sup>b</sup>Includes Arizona, Illinois, Indiana, Maryland, Missouri, Nebraska, Nevada, Oregon, South Dakota, and Tennessee.

Note: The production estimates in this table are based on data reported on Form EIA-23, "Annual Survey of Domestic Oil and Gas Reserves." They may differ from the official Energy Information Administration production data for natural gas for 2006 contained in the *Natural Gas Annual 2006*, DOE/EIA-0131(06).

Source: Energy Information Administration, Office of Oil and Gas.

**Table 6. Associated-Dissolved Natural Gas Proved Reserves, Reserves Changes, and Production Wet After Lease Separation, 2006 (Billion Cubic Feet at 14.73 psia and 60° Fahrenheit)**

State and Subdivision	Published Proved Reserves 12/31/05	Changes in Reserves During 2006							New Reservoir Discoveries in Old Fields (+)	Estimated Production (-)	Proved Reserves 12/31/06
		Adjustments (+,-)	Revision Increases (+)	Revision Decreases (-)	Sales (-)	Acquisitions (+)	Extensions (+)	New Field Discoveries (+)			
Alaska	6,362	-1	2,850	111	0	0	4	0	0	218	8,886
<b>Lower 48 States</b>	<b>21,874</b>	<b>-53</b>	<b>2,522</b>	<b>2,671</b>	<b>1,726</b>	<b>1,960</b>	<b>806</b>	<b>40</b>	<b>65</b>	<b>2,063</b>	<b>20,754</b>
Alabama	29	1	4	8	4	0	0	0	0	4	18
Arkansas	46	3	2	2	0	0	0	0	0	5	44
California	2,585	-62	96	391	133	219	21	0	0	180	2,155
Coastal Region Onshore	269	-64	29	12	70	60	5	0	0	9	208
Los Angeles Basin Onshore	186	-1	7	31	37	41	4	0	0	8	161
San Joaquin Basin Onshore	2,041	2	53	341	26	118	11	0	0	157	1,701
State Offshore	89	1	7	7	0	0	1	0	0	6	85
Colorado	1,326	-2	234	35	578	579	113	0	0	96	1,541
Florida	87	1	0	35	0	0	0	0	0	3	50
Kansas	83	3	23	19	0	0	1	0	0	9	82
Kentucky	30	-1	7	0	0	0	0	0	0	0	36
Louisiana	588	-3	93	62	70	49	27	0	3	64	561
North	98	-2	13	11	0	1	0	0	0	9	90
South Onshore	427	7	72	46	66	46	20	0	3	48	415
State Offshore	63	-8	8	5	4	2	7	0	0	7	56
Michigan	153	0	61	5	3	3	0	1	0	18	192
Mississippi	20	0	1	1	5	0	7	0	2	3	21
Montana	161	1	51	19	19	17	22	0	0	19	195
New Mexico	1,661	-21	346	156	213	255	93	0	0	193	1,772
East	1,563	-21	334	135	205	247	93	0	0	186	1,690
West	98	0	12	21	8	8	0	0	0	7	82
New York	3	-1	0	0	0	0	0	0	0	0	2
North Dakota	343	2	67	24	59	45	18	1	4	40	357
Ohio	184	18	17	31	0	0	1	0	0	15	174
Oklahoma	809	-34	173	102	13	21	41	0	0	95	800
Pennsylvania	134	12	3	11	0	0	24	0	0	11	151
Texas	7,003	16	755	712	155	406	322	4	24	594	7,069
RRC District 1	57	4	6	4	0	0	5	0	0	7	61
RRC District 2 Onshore	109	-2	8	7	14	14	24	0	0	14	118
RRC District 3 Onshore	445	-10	41	52	25	110	22	2	23	67	489
RRC District 4 Onshore	148	2	21	39	9	1	0	0	1	15	110
RRC District 5	51	0	12	1	0	0	1	0	0	6	57
RRC District 6	344	6	65	113	1	5	21	0	0	51	276
RRC District 7B	73	-1	10	4	1	3	5	0	0	11	74
RRC District 7C	1,037	7	80	55	16	120	99	0	0	76	1,196
RRC District 8	2,971	1	300	270	68	148	87	0	0	205	2,964
RRC District 8A	1,386	-2	117	106	12	2	15	0	0	98	1,302
RRC District 9	126	-6	11	11	2	1	1	0	0	15	105
RRC District 10	253	17	84	50	5	2	42	2	0	29	316
State Offshore	3	0	0	0	2	0	0	0	0	0	1
Utah	308	1	36	37	16	5	44	6	0	30	317
Virginia	0	0	0	0	0	0	0	0	0	0	0
West Virginia	19	0	0	2	0	0	0	0	0	1	16
Wyoming	384	9	26	35	3	1	11	1	0	47	347
Federal Offshore <sup>a</sup>	5,904	0	525	984	455	360	61	27	32	635	4,835
Pacific (California)	776	1	35	22	0	0	0	0	1	35	756
Gulf of Mexico (Louisiana) <sup>a</sup>	4,581	0	384	827	320	234	60	27	24	462	3,701
Gulf of Mexico (Texas)	547	-1	106	135	135	126	1	0	7	138	378
Miscellaneous <sup>b</sup>	14	4	2	0	0	0	0	0	0	1	19
<b>U.S. Total</b>	<b>28,236</b>	<b>-54</b>	<b>5,372</b>	<b>2,782</b>	<b>1,726</b>	<b>1,960</b>	<b>810</b>	<b>40</b>	<b>65</b>	<b>2,281</b>	<b>29,640</b>

<sup>a</sup>Includes Federal offshore Alabama.

<sup>b</sup>Includes Arizona, Illinois, Indiana, Maryland, Missouri, Nebraska, Nevada, Oregon, South Dakota, and Tennessee.

Note: The production estimates in this table are based on data reported on Form EIA-23, "Annual Survey of Domestic Oil and Gas Reserves." They may differ from the official Energy Information Administration production data for natural gas for 2006 contained in the *Natural Gas Annual 2006*, DOE/EIA-0131(06).

Source: Energy Information Administration, Office of Oil and Gas.

**Table 7. Natural Gas Liquids Proved Reserves, Reserves Changes, and Production, 2006<sup>a</sup>**  
(Million Barrels of 42 U.S. Gallons)

State and Subdivision	Published Proved Reserves 12/31/05	Changes in Reserves During 2006							New Reservoir Discoveries in Old Fields (+)	Estimated Production (-)	Proved Reserves 12/31/06
		Adjustments (+,-)	Revision Increases (+)	Revision Decreases (-)	Sales (-)	Acquisitions (+)	Extensions (+)	New Field Discoveries (+)			
Alaska	352	0	0	0	0	0	0	0	0	14	338
<b>Lower 48 States</b>	<b>7,813</b>	<b>173</b>	<b>845</b>	<b>1,010</b>	<b>931</b>	<b>1,048</b>	<b>924</b>	<b>16</b>	<b>53</b>	<b>797</b>	<b>8,134</b>
Alabama	61	9	5	5	17	5	3	0	0	5	56
Arkansas	3	2	0	1	0	0	0	0	0	0	4
California	137	8	8	19	17	18	8	0	0	11	132
Coastal Region Onshore	16	5	3	1	7	6	1	0	0	1	22
Los Angeles Basin Onshore	9	0	0	2	2	5	0	0	0	0	10
San Joaquin Basin Onshore	112	3	5	16	8	7	7	0	0	10	100
State Offshore	0	0	0	0	0	0	0	0	0	0	0
Colorado	484	-14	34	41	70	62	54	0	1	32	478
Florida	7	-2	0	2	0	0	0	0	0	0	3
Kansas	224	8	44	54	1	1	6	0	0	19	209
Kentucky	70	30	3	1	21	26	1	0	0	3	105
Louisiana	292	-14	46	51	24	30	36	1	14	50	280
North	83	2	10	11	2	4	11	0	0	8	89
South Onshore	168	-5	32	36	18	25	18	0	11	36	159
State Offshore	41	-11	4	4	4	1	7	1	3	6	32
Michigan	39	-1	10	3	1	0	1	0	0	3	42
Mississippi	7	0	1	0	0	0	1	0	0	1	8
Montana	9	1	1	1	0	0	1	0	0	1	10
New Mexico	840	35	81	67	265	264	44	2	5	78	861
East	271	23	47	38	27	26	28	2	0	37	295
West	569	12	34	29	238	238	16	0	5	41	566
North Dakota	49	6	8	3	6	4	3	0	0	6	55
Oklahoma	839	13	88	96	38	61	105	0	1	81	892
Texas	3,080	53	331	441	243	346	505	5	12	313	3,335
RRC District 1	36	8	4	6	0	0	3	1	0	4	42
RRC District 2 Onshore	91	12	12	24	6	7	13	0	1	16	90
RRC District 3 Onshore	226	20	33	41	31	25	37	2	6	43	234
RRC District 4 Onshore	309	41	55	77	44	47	46	1	4	49	333
RRC District 5	48	-8	10	3	5	8	7	0	0	4	53
RRC District 6	333	16	37	72	20	37	57	0	0	31	357
RRC District 7B	90	-24	18	6	4	5	62	0	0	8	133
RRC District 7C	411	16	25	53	9	19	61	0	0	31	439
RRC District 8	575	-15	52	67	77	97	45	0	1	45	566
RRC District 8A	250	3	20	24	2	1	3	0	0	18	233
RRC District 9	285	-16	11	12	35	83	95	0	0	26	385
RRC District 10	423	1	53	56	10	17	76	0	0	38	466
State Offshore	3	-1	1	0	0	0	0	1	0	0	4
Utah and Wyoming	879	-28	58	87	106	112	118	2	1	62	887
West Virginia	85	19	7	5	18	21	6	0	0	5	110
Federal Offshore <sup>b</sup>	696	47	118	132	104	97	31	6	19	125	653
Pacific (California)	8	1	0	5	0	0	0	0	0	0	4
Gulf of Mexico (Louisiana) <sup>b</sup>	603	44	99	107	84	72	26	6	18	102	575
Gulf of Mexico (Texas)	85	2	19	20	20	25	5	0	1	23	74
Miscellaneous <sup>c</sup>	12	1	2	1	0	1	1	0	0	2	14
<b>U.S. Total</b>	<b>8,165</b>	<b>173</b>	<b>845</b>	<b>1,010</b>	<b>931</b>	<b>1,048</b>	<b>924</b>	<b>16</b>	<b>53</b>	<b>811</b>	<b>8,472</b>

<sup>a</sup>This table is natural gas plant liquids plus lease condensate.

<sup>b</sup>Includes Federal offshore Alabama.

<sup>c</sup>Includes Arizona, Illinois, Indiana, Maryland, Missouri, Nebraska, Nevada, New York, Ohio, Oregon, Pennsylvania, South Dakota, Tennessee, and Virginia.

Note: The production estimates in this table are based on data reported on Form EIA-23, "Annual Survey of Domestic Oil and Gas Reserves," and Form EIA-64A, "Annual Report of the Origin of Natural Gas Liquids Production." They may differ from the official Energy Information Administration production data for natural gas and natural gas liquids for 2006 contained in the publications *Petroleum Supply Annual 2006*, DOE/EIA-0340(06) and *Natural Gas Annual 2006* DOE/EIA-0131(06).

Source: Energy Information Administration, Office of Oil and Gas.

**Table 8. Deepwater Production and Proved Reserves of the Gulf of Mexico Federal Offshore, 1992-2006**

Year	Gulf of Mexico			Depth		Deepwater Percentage
	Total	Louisiana <sup>a</sup>	Texas	Greater than 200 meters	Less than 200 meters	
<b>Crude Oil</b> (million barrels of 42 U.S. gallons)						
<b>Production</b>						
1992	267	253	14	46	221	17.2
1993	266	252	14	46	220	17.3
1994	265	245	20	53	212	20.1
1995	292	262	30	77	215	26.4
1996	303	265	38	90	213	29.7
1997	342	298	44	123	219	36.0
1998	372	336	36	171	201	46.0
1999	421	376	45	228	193	54.2
2000	419	381	38	234	185	55.8
2001	459	417	42	286	173	62.2
2002	452	395	57	288	164	63.8
2003	485	426	59	336	149	69.3
2004	467	404	63	310	157	66.4
2005	409	342	67	305	104	75.0
2006	406	348	58	318	87	78.5
<b>Reserves</b>						
1992	1,835	1,643	192	557	1,278	30.4
1993	2,072	1,880	192	824	1,248	39.8
1994	2,127	1,922	205	877	1,250	41.2
1995	2,518	2,269	249	1,241	1,277	49.3
1996	2,567	2,357	210	1,311	1,256	51.1
1997	2,949	2,587	362	1,682	1,267	57.0
1998	2,793	2,483	310	1,611	1,182	57.8
1999	2,744	2,442	302	1,626	1,118	59.3
2000	3,174	2,751	423	2,021	1,153	63.7
2001	4,288	3,877	411	3,208	1,080	74.8
2002	4,444	4,088	356	3,372	1,072	75.9
2003	4,554	4,251	303	3,627	927	79.6
2004	4,144	3,919	225	3,280	864	79.2
2005	4,042	3,851	191	3,272	770	81.0
2006	3,655	3,500	155	2,983	672	81.6

<sup>a</sup>Includes Federal Offshore Alabama.

Source: Based on data reported on Form EIA-23, "Annual Survey of Domestic Oil and Gas Reserves."

**Table 8. Deepwater Production and Proved Reserves of the Gulf of Mexico Federal Offshore, 1992-2006  
(continued)**

Year	Gulf of Mexico			Depth		Deepwater Percentage
	Total	Louisiana <sup>a</sup>	Texas	Greater than 200 meters	Less than 200 meters	
<b>Natural Gas, Wet After Lease Separation</b> (billion cubic feet at 14.73 psia and 60° Fahrenheit)						
<b>Production</b>						
1992	4,576	3,292	1,284	166	4,410	3.6
1993	4,651	3,383	1,268	229	4,422	4.9
1994	4,797	3,505	1,292	294	4,503	6.1
1995	4,679	3,421	1,258	354	4,315	7.8
1996	5,045	3,752	1,293	549	4,496	10.9
1997	5,230	3,984	1,246	577	4,653	11.0
1998	4,967	3,817	1,150	724	4,243	14.6
1999	5,000	3,829	1,171	1,124	3,876	22.5
2000	4,901	3,747	1,154	1,196	3,705	24.4
2001	5,027	3,843	1,184	1,367	3,660	27.2
2002	4,544	3,541	1,003	1,365	3,180	30.0
2003	4,397	3,330	1,067	1,545	2,852	35.1
2004	3,967	2,890	1,077	1,251	2,716	31.5
2005	2,968	2,056	912	1,070	1,898	36.1
2006	2,805	2,036	769	1,112	1,692	39.6
<b>Reserves</b>						
1992	27,050	20,006	7,044	3,273	23,777	12.1
1993	26,463	19,751	6,712	3,495	22,968	13.2
1994	27,626	21,208	6,418	4,772	22,854	17.3
1995	28,229	21,664	6,565	5,811	22,418	20.6
1996	28,153	22,119	6,034	6,389	21,764	22.7
1997	28,455	22,428	6,027	7,491	20,964	26.3
1998	26,937	21,261	5,676	7,575	19,362	28.1
1999	26,062	20,172	5,890	7,726	18,336	29.6
2000	26,891	20,466	6,425	8,731	18,160	32.5
2001	27,100	20,290	6,810	11,229	15,871	41.4
2002	25,347	19,113	6,234	10,540	14,807	41.6
2003	22,522	17,168	5,354	10,041	12,481	44.6
2004	19,288	15,144	4,144	8,591	10,698	44.5
2005	17,427	14,073	3,354	8,042	9,385	46.1
2006	14,938	12,201	2,737	6,690	8,248	44.8

<sup>a</sup>Includes Federal Offshore Alabama.

Source: Based on data reported on Form EIA-23, "Annual Survey of Domestic Oil and Gas Reserves."

**Table 9. Coalbed Natural Gas Proved Reserves and Production for 1989–2006**  
(Billion Cubic Feet at 14.73 psia and 60° Fahrenheit)

Year	Alabama	Colorado	New Mexico	Utah	Wyoming	Virginia	Eastern States <sup>a</sup>	Western States <sup>b</sup>	Others <sup>c</sup>	United States
<b>Reserves</b>										
1989	537	1,117	2,022	NA	NA	NA	NA	NA	0	3,676
1990	1,224	1,320	2,510	NA	NA	NA	NA	NA	33	5,087
1991	1,714	2,076	4,206	NA	NA	NA	NA	NA	167	8,163
1992	1,968	2,716	4,724	NA	NA	NA	NA	NA	626	10,034
1993	1,237	3,107	4,775	NA	NA	NA	NA	NA	1,065	10,184
1994	976	2,913	4,137	NA	NA	NA	NA	NA	1,686	9,712
1995	972	3,461	4,299	NA	NA	NA	NA	NA	1,767	10,499
1996	823	3,711	4,180	NA	NA	NA	NA	NA	1,852	10,566
1997	1,077	3,890	4,351	NA	NA	NA	NA	NA	2,144	11,462
1998	1,029	4,211	4,232	NA	NA	NA	NA	NA	2,707	12,179
1999	1,060	4,826	4,080	NA	NA	NA	NA	NA	3,263	13,229
2000	1,241	5,617	4,278	1,592	1,540	NA	1,399	41	--	15,708
2001	1,162	6,252	4,324	1,685	2,297	NA	1,453	358	--	17,531
2002	1,283	6,691	4,380	1,725	2,371	NA	1,488	553	--	18,491
2003	1,665	6,473	4,396	1,224	2,759	NA	1,528	698	--	18,743
2004	1,900	5,787	5,166	934	2,085	NA	1,620	898	--	18,390
2005	1,773	6,772	5,249	902	2,446	NA	1,822	928	--	19,892
2006	2,068	6,344	4,894	750	2,448	1,813	273	1,030	--	19,620
<b>Production</b>										
1989	23	12	56	NA	NA	NA	NA	NA	0	91
1990	36	26	133	NA	NA	NA	NA	NA	1	196
1991	68	48	229	NA	NA	NA	NA	NA	3	348
1992	89	82	358	NA	NA	NA	NA	NA	10	539
1993	103	125	486	NA	NA	NA	NA	NA	18	752
1994	108	179	530	NA	NA	NA	NA	NA	34	851
1995	109	226	574	NA	NA	NA	NA	NA	47	956
1996	98	274	575	NA	NA	NA	NA	NA	56	1,003
1997	111	312	597	NA	NA	NA	NA	NA	70	1,090
1998	123	401	571	NA	NA	NA	NA	NA	99	1,194
1999	108	432	582	NA	NA	NA	NA	NA	130	1,252
2000	109	451	550	74	133	NA	58	NA	--	1,379
2001	111	490	517	83	278	NA	69	NA	--	1,562
2002	117	520	471	103	302	NA	68	NA	--	1,614
2003	98	488	451	97	344	NA	71	NA	--	1,600
2004	121	520	528	82	320	NA	72	NA	--	1,720
2005	113	515	514	75	336	NA	90	NA	--	1,732
2006	114	477	510	66	378	81	24	108	--	1,758

<sup>a</sup>Includes Illinois, Indiana, Ohio, Pennsylvania, Virginia, and West Virginia. In 2006, Virginia is individually listed.

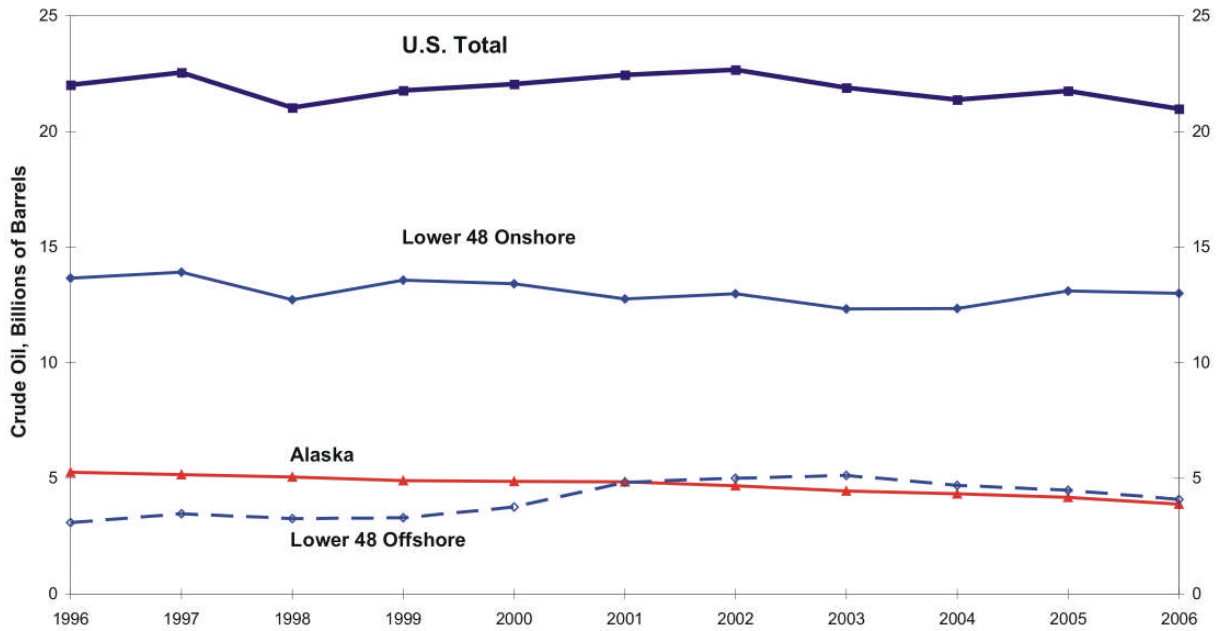
<sup>b</sup>Includes Arkansas, Kansas, Louisiana, Montana, and Oklahoma.

<sup>c</sup>Includes Oklahoma, Pennsylvania, Utah, Virginia, West Virginia, and Wyoming. These states are individually listed or grouped in Eastern States and Western States for 2000-2006.

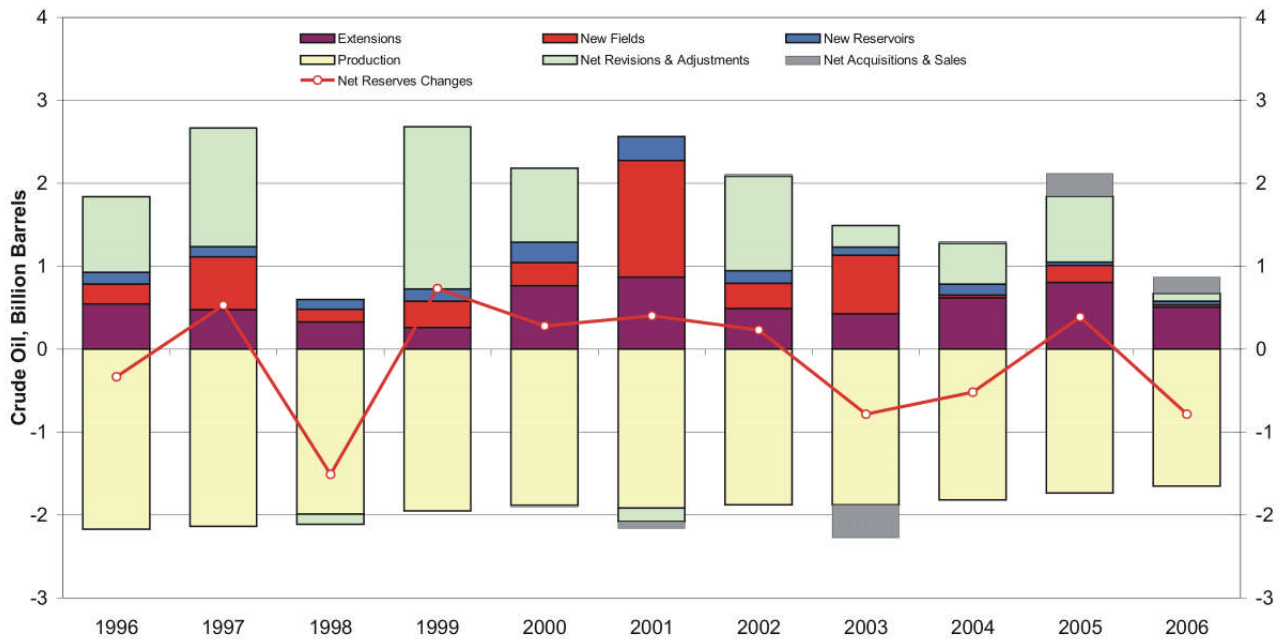
NA -- Not applicable.

Source: Energy Information Administration, Office of Oil and Gas.

**Figure 1. U.S. Crude Oil Proved Reserves, 1996 – 2006**

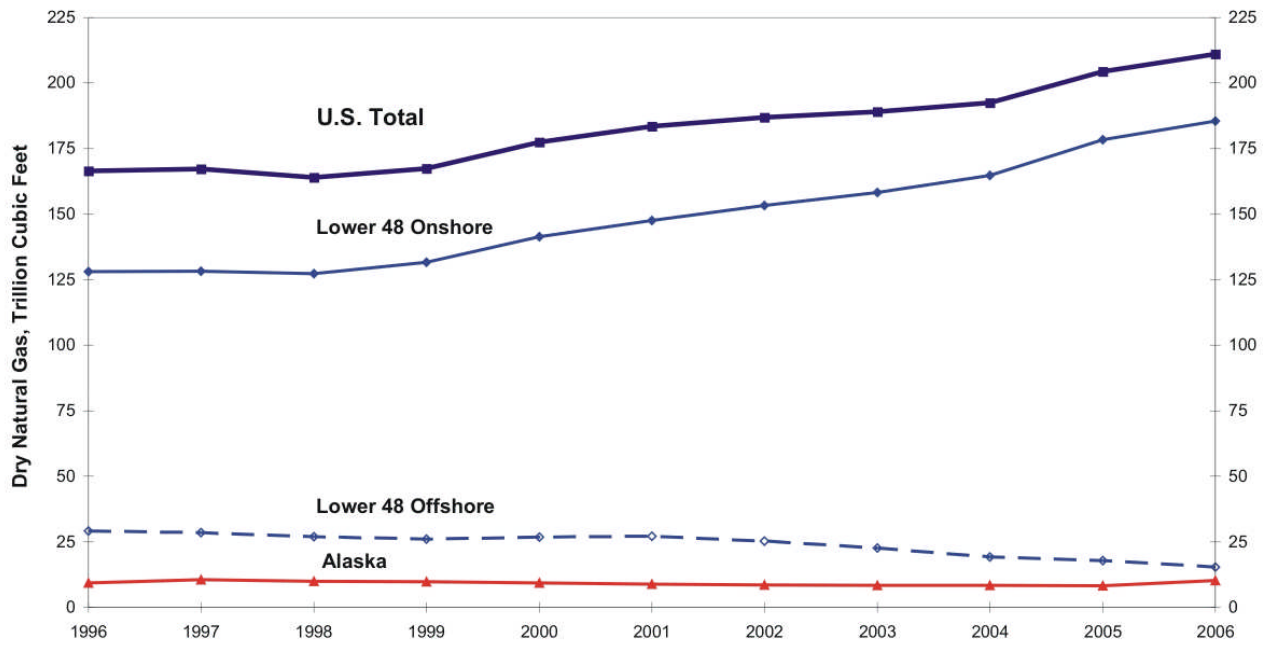


**Figure 2. Components of Reserves Changes for Crude Oil, 1996 – 2006**

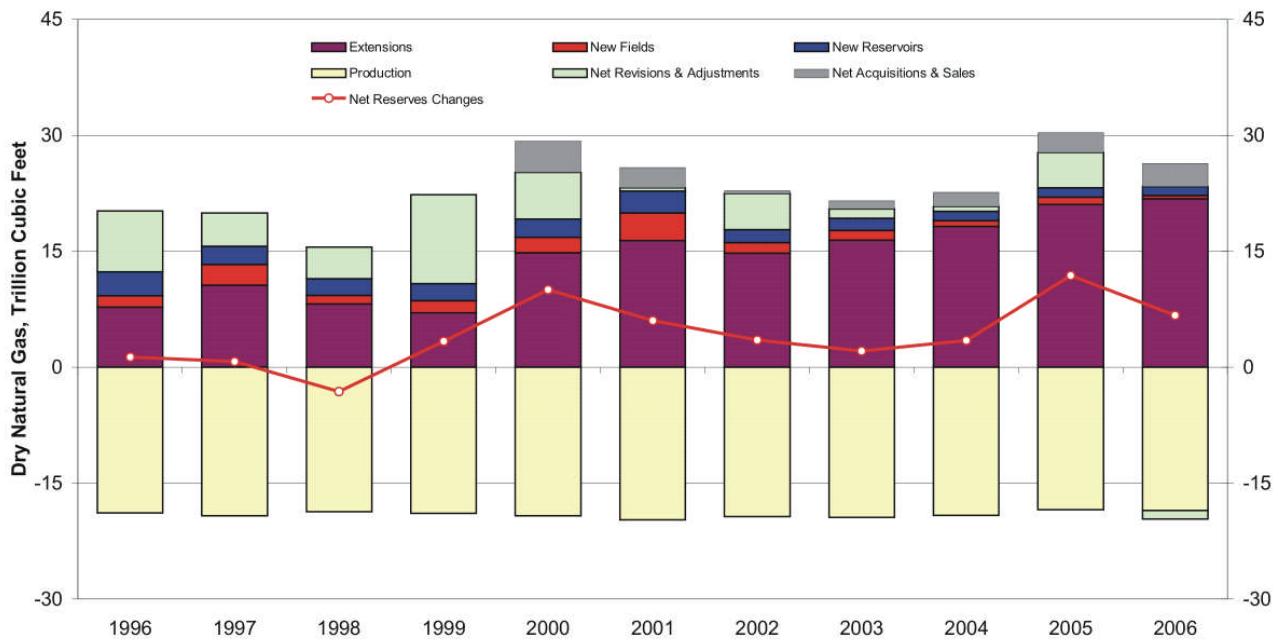


Source: U.S. Crude Oil, Natural Gas, and Natural Gas Liquids Reserves, 1996 through 2006 annual reports, DOE/EIA-0216.

**Figure 3. U.S. Dry Natural Gas Proved Reserves, 1996 – 2006**



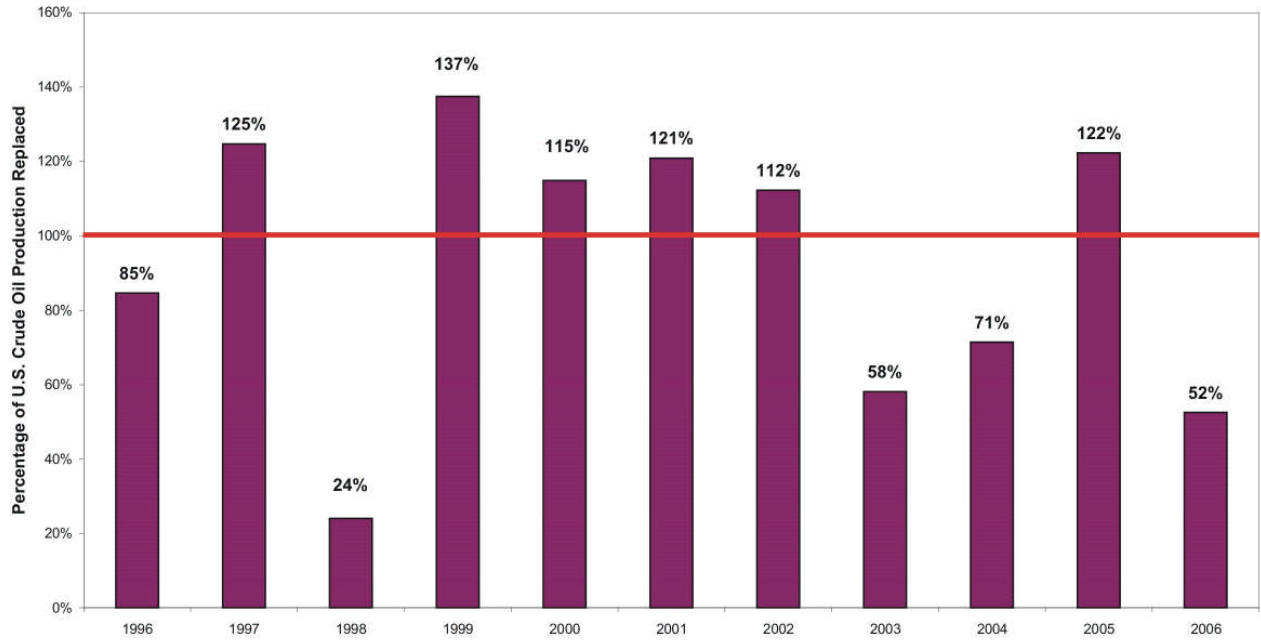
**Figure 4. Components of Reserves Changes for Dry Natural Gas, 1996 – 2006**



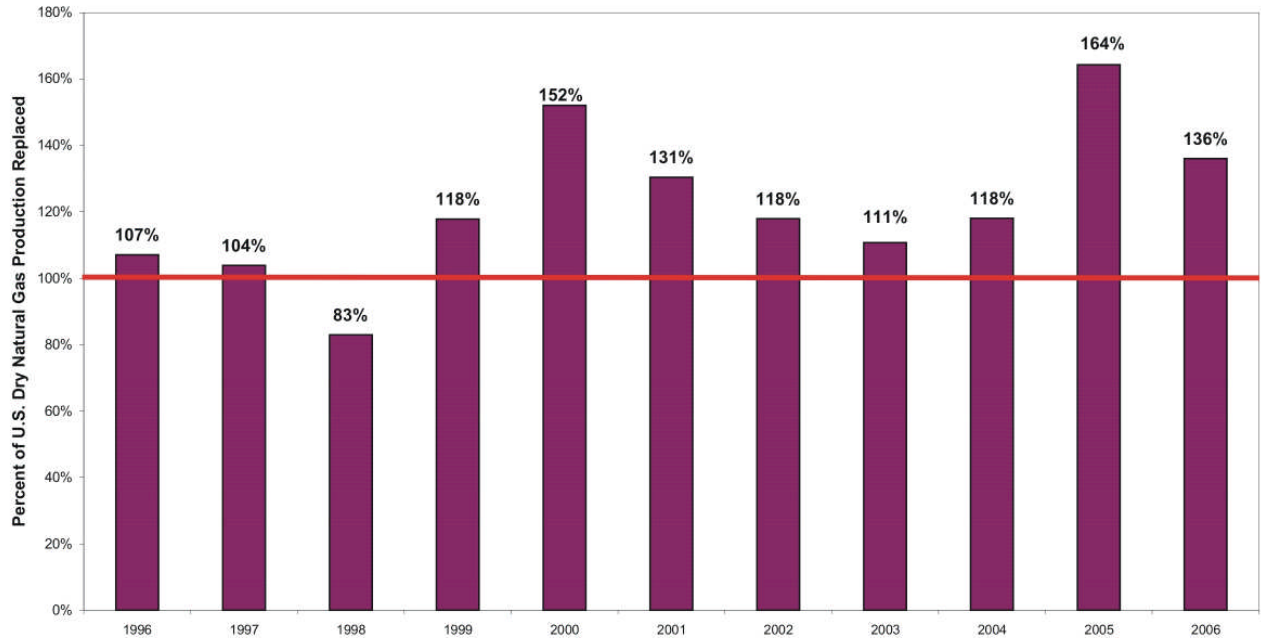
Source: U.S. Crude Oil, Natural Gas, and Natural Gas Liquids Reserves, 1996 through 2006 annual reports, DOE/EIA-0216.



**Figure 5. Crude Oil Production Replaced by Reserves Additions, 1996 – 2006**

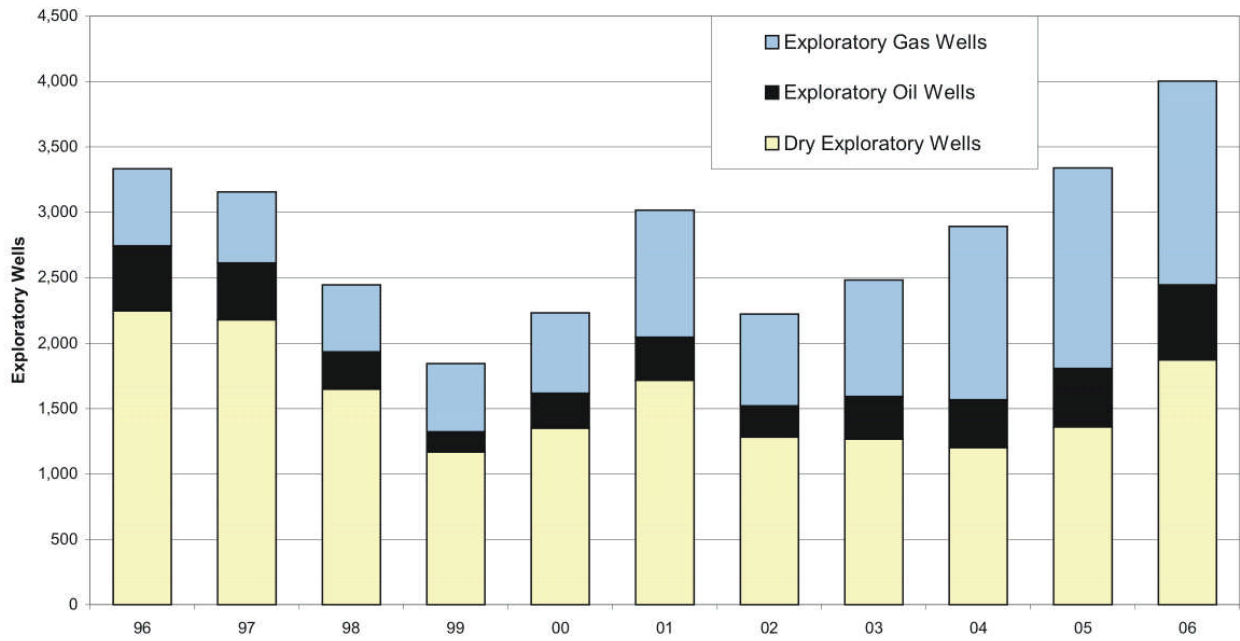


**Figure 6. Dry Natural Gas Production Replaced by Reserves Additions, 1996 – 2006**

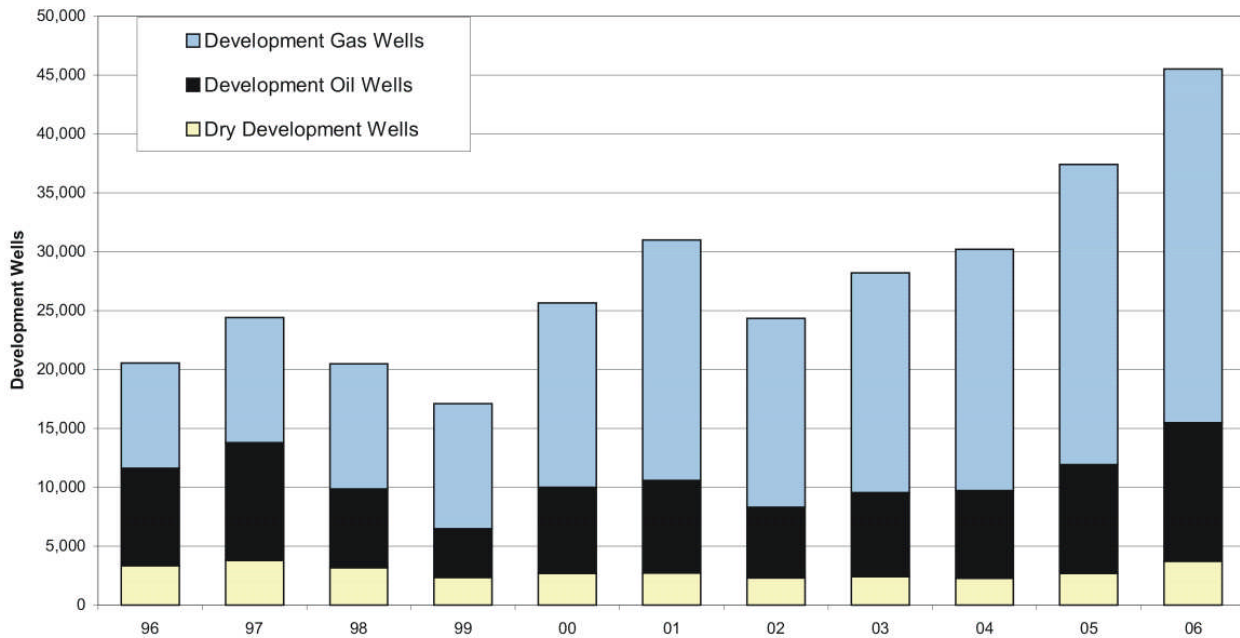


Source: U.S. Crude Oil, Natural Gas, and Natural Gas Liquids Reserves, 1996 through 2006 annual reports, DOE/EIA-0216.

**Figure 7. Exploratory Wells Drilled, 1996 – 2006**

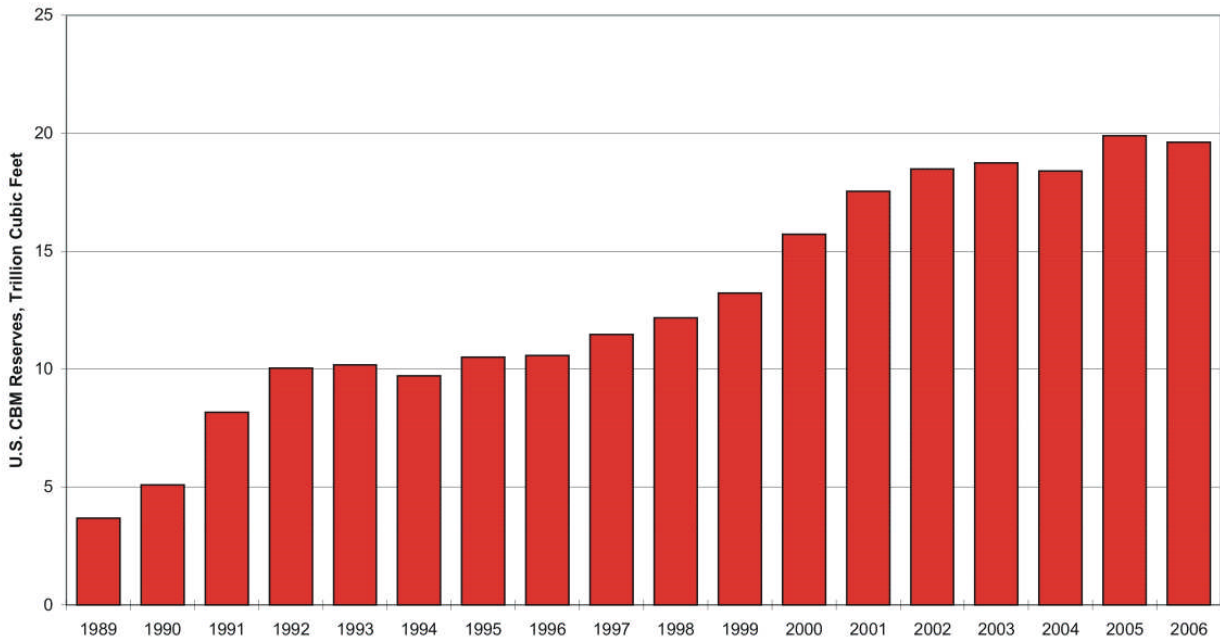


**Figure 8. Development Wells Drilled, 1996 – 2006**

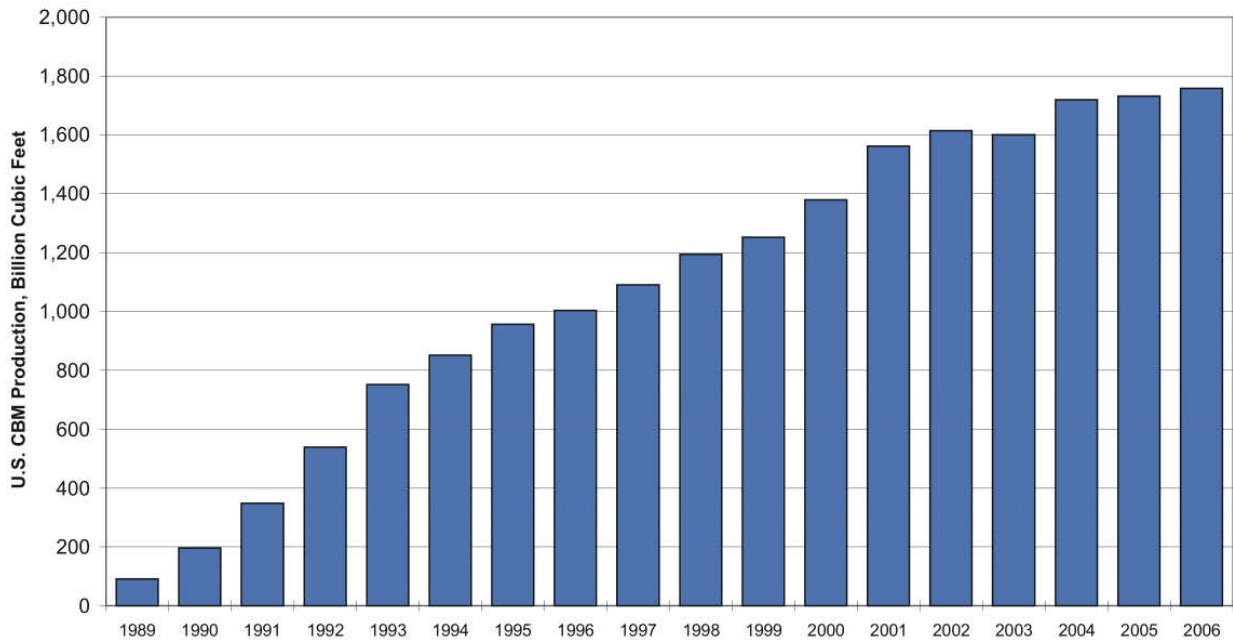


Source: EIA *Monthly Energy Review*, Table 5.2 Crude Oil and Natural Gas Wells Drilled, September 2007.

**Figure 9. U.S. Coalbed Natural Gas Proved Reserves, 1989 – 2006**



**Figure 10. U.S. Coalbed Natural Gas Production, 1989 – 2006**



Source: U.S. Crude Oil, Natural Gas, and Natural Gas Liquids Reserves, 1989 through 2006 annual reports, DOE/EIA-0216.