

PAPAYA RINGSPOT VIRUS



Maui, near Wailuku. 4/4/02. Papaya plant with PRV infected foliage. HDOA Survey photo



Maui, near Wailuku. 4/4/02. Papaya leaf with PRV symptoms. HDOA Survey photo



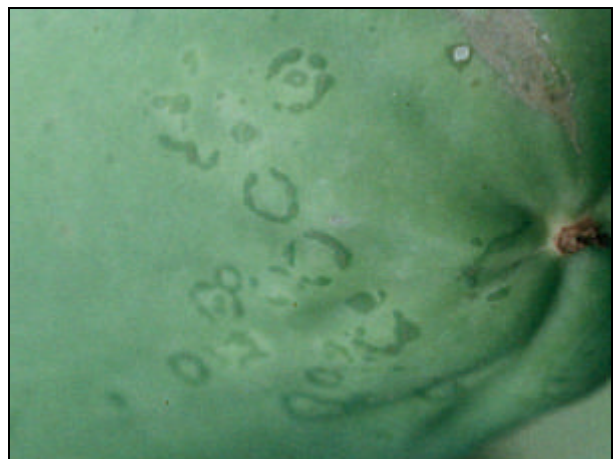
Wailuku, Maui. 4/4/02. Papaya leaf exhibiting "shoestring" appearance. HDOA Survey photo



Wailuku, Maui. 4/4/02. Foliar "green islands" resulting from PRV infection. HDOA Survey photo



Maui Tropical Plantation. 4/4/02. Papaya plant exhibiting PRV water-soaking on petioles. HDOA Survey photo



Surface of papaya fruit exhibiting PRV ringspots. HDOA Chemical Mechanical Section file photo