

Amenity Migration and Forest-based Communities:

Finding a Fit Between People and the Land

CSREES Presentation By:

**Dr. Steve Selin, Professor
Division of Forestry & Natural Resources
West Virginia University**

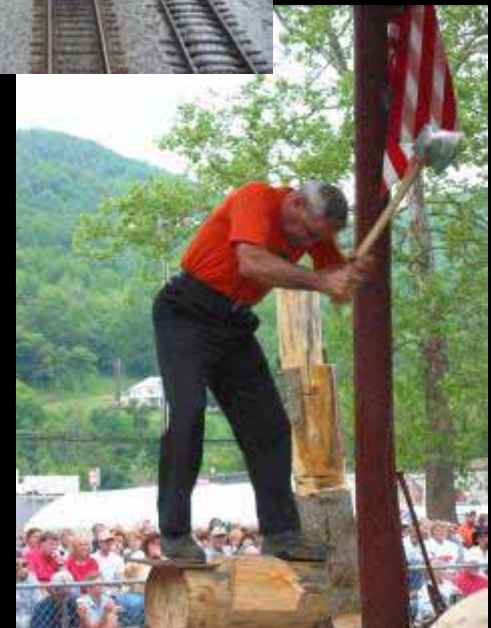
6-28-06



West Virginia University.

Changing Face of Rural America

- **Decline of traditional industries (mining; forestry; agriculture)**
- **Significant out-migration of residents**
- **Transitional economies**
- **Working towards diversified economies**
- **Focus on forest-based communities**



Amenity Migration



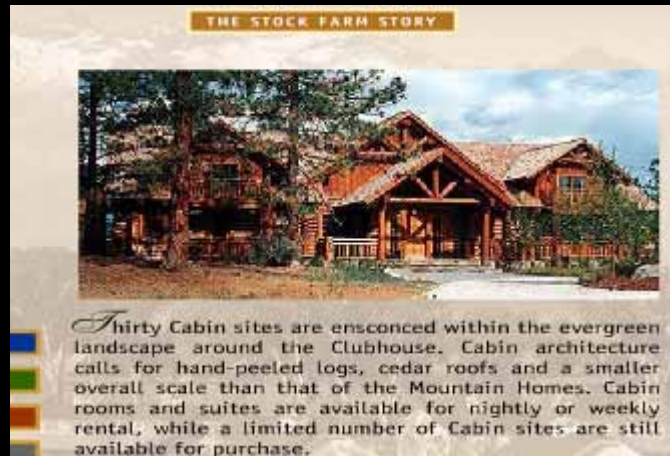
- Big development issue of 21st century!
- Impact distributed unevenly
- Regions with high natural; cultural amenities
- Poster children? Jackson Hole, WY; Bend, OR; Sedona, AR
- Change is transforming the environment & communities
- Other communities want in!

Amenity Migration to Rural Areas:



West Virginia - Snowshoe Resort

Amenity Migration to Rural Areas:



**Bitterroot Valley, MT Development -
Described in "Collapse"**

Amenity Migration to Rural Areas: A Global Phenomena



Aysén Region of Southern Chile – Hacienda Tres Lagos

Opportunities and Challenges for Forest-based Communities and Ecosystems

- Suggest Agenda For:
 - Discovery
 - Learning
 - Engagement

Regional Economic Impact of Amenity-based Development

- Quantify economic benefits & costs
- Distributional effects
- Tend towards vertical integration
- Rising cost of living
- Affordable housing needs
- Need for integrated planning



Wildland-Urban Interface (WUI) Zone Issues



- Increased human cost of wildfires
- Sedona, AZ
- Forest fragmentation
- Ecological footprint
- Human-wildlife interactions
- Visitor impacts

Social Change in Rural Communities



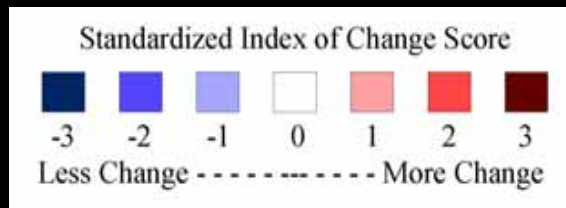
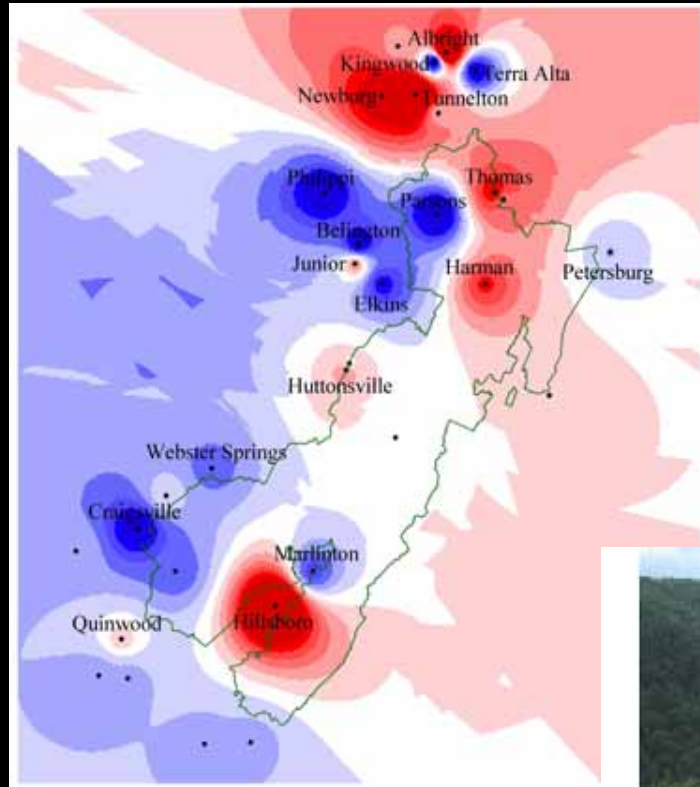
**Aysén Region of
Southern Chile**

**“I feel like I’m a foreigner in my
own country.”**

Local Resident



Land Use & Community Conflicts



Relative Community Index of Change Social Assessment Monongahela National Forest West Virginia



LRC Resubmits Mega-Development Plan along
New River Gorge National River

Land Resource Companies (LRC) has resubmitted their request that the county restore 4,300 ac of land that runs adjacent to the New River Gorge National River for 10 miles for a nearly 2,200-u development. Thanks to the national Coalition and allies, private lands inside of the boundary of River Gorge National River (we); are no longer at risk in this proposal. However, advocates remain concerned about potential impacts on scenic views, water quality, and wildlife habitat.



Global Phenomena - Local Impacts

- Cross-Cultural Comparisons
- Multiples Scales of Analysis
- Policy Implications
- Benchmark Regions/Hot Spots
- Mapping Change
- Integrated Planning



Aysen Region, Southern Chile

Public Policy, Planning, and Management Issues

- Major development issue
- Crosses disciplinary, geographic, administrative boundaries
- Need for integrated, landscape-level solutions
- Assess public policy effects

Potential Role of Federal–State Partnership

- Coordinated Program of Research and Engagement; Multi-Disciplinary; Multi-State
- Integrated Science Approach
- Need for Integrated Planning; Management Systems; Models; Techniques. . . . AFHA
- Multi-national extensions



Forever Wild?