

Real Inventories, Sales, and Inventory-Sales Ratios for Manufacturing and Trade, 1977-95

THIS REPORT PRESENTS revised estimates of real inventories, sales, and inventory-sales (I-S) ratios for manufacturing and trade, quarterly beginning with 1977 and monthly beginning with March 1994.¹ I-S ratios are used to assess the likelihood that businesses will add to (or reduce) inventories in response to changes in demand. Variations and trends in I-S ratios are closely watched by business cycle analysts and economic forecasters.

The inventories used in computing I-S ratios are on a "pre-last-in-first-out," or "pre-LIFO," basis from data reported to the Bureau of the Census and on a current-dollar replacement-cost basis and a real basis, as estimated by BEA as part of the gross domestic product (GDP) estimates. The Census Bureau's estimates are based on inventories reported by companies, which use a variety of accounting methods. BEA's current-dollar estimates are based on a revalua-

1. This set of tables was last published in the September 1995 issue of the SURVEY OF CURRENT BUSINESS.

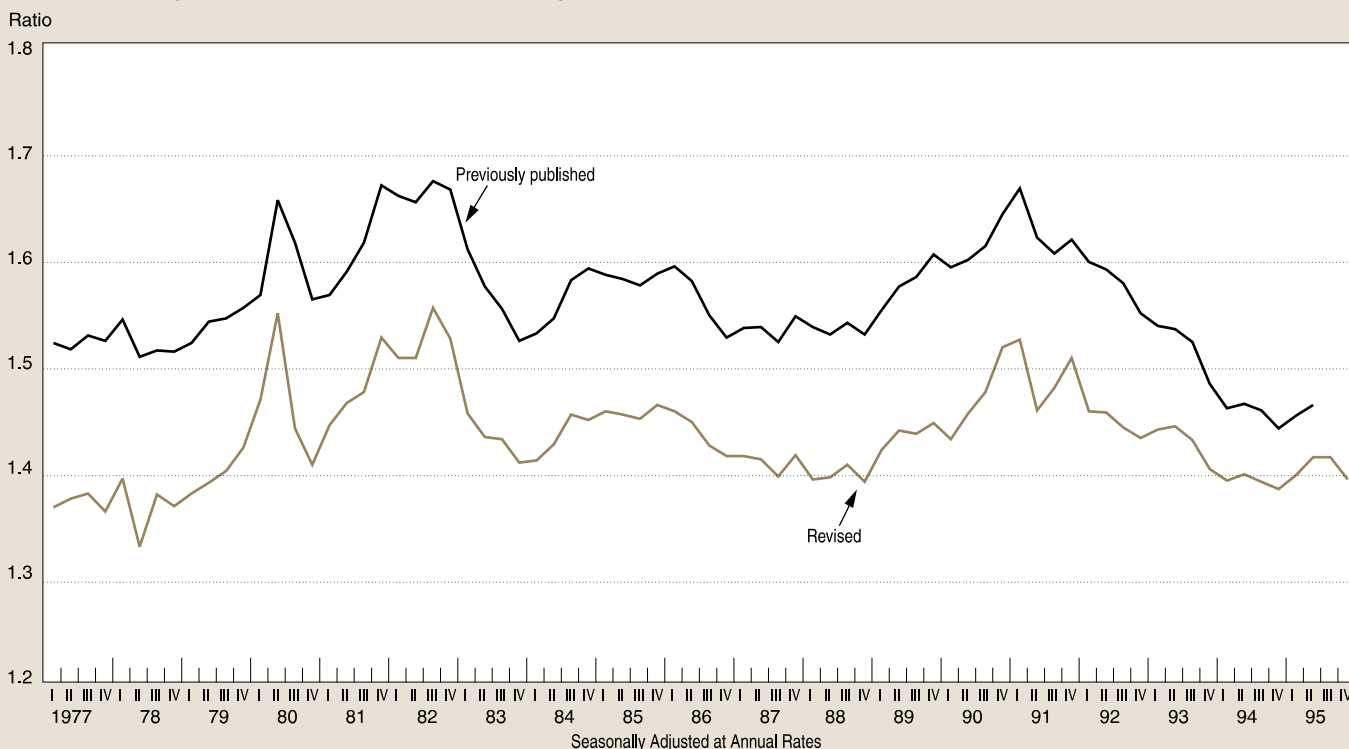
tion of the Census Bureau's estimates to a consistent replacement-cost basis; BEA's real estimates are based on inventories that are valued in chained (1992) dollars.

Tables 1, 2, and 3 show chain-weighted quarterly and monthly estimates of real inventories, sales, and I-S ratios, respectively.² Manufacturing inventories by stage of fabrication are shown in table 4. These estimates supplement the quarterly current-dollar and real ratios of inventories to final sales for domestic business, nonfarm business, and goods and structures that are presented in tables 5.12 and 5.13 of the national income and product accounts (NIPA's), as well as the Census Bureau's monthly inventory, sales, and I-S ratios for manufacturing and trade series.

2. "Real" estimates are in chained (1992) dollars. Except for the most recent periods, changes in real inventories and sales are "chain-type" measures that are based on the "Fisher Ideal" formula, which uses weights for 2 adjacent years. For example, the 1992-93 percent change in real sales uses prices for 1992 and 1993 as weights.

CHART 1

Real Inventory-Sales Ratio for Manufacturing and Trade



The inventory estimates for manufacturing, merchant wholesalers, and retailers that are presented in this report are those that were released as part of the comprehensive revision of the NIPA's in January 1996; they also appear in NIPA tables 5.12 and 5.13 in this issue. The sales estimates incorporate the Census Bureau series available at the time of the release of the comprehensive revision.


The revisions to the inventory and sales estimates primarily reflect the incorporation of the following new source data and methodology:

- Revised prices and unit labor costs (including prices for computers and peripheral equipment);
- Chain-type measures for real inventories and sales, which replace the previously published fixed-weighted measures;
- A shift in base period from 1987 to 1992;
- Updated commodity weights (information on commodity inventories within each type of business) and turnover periods (average time that inventories are held by businesses) used in calculating inventory prices; and
- Updated product detail used in calculating sales prices.

The revised I-S ratios for manufacturing and trade are at a substantially lower level than the previously published ratios (chart 1). The incorporation of Census Bureau inventories and sales, which were benchmarked to newly available data from the 1992 Economic Censuses, and the shift in base period resulted in smaller upward revisions to inventories than to sales. (Changing to a more recent base period usually raises the level of the "real" measures.) In addition, the revised ratios for 1994 are at about the same level as those for 1989, whereas the previously published ratios for 1994 were substantially below those for 1989.

Table A compares the revised ratios for 1981-95 with some of the other available I-S ratios. All of the current-dollar I-S ratios in table A show a clear downtrend from their 1981-82 recession peaks. By the mid-1990's, the ratios are at historically low levels.

The real ratios present a mixed picture. The ratios for domestic business and nonfarm business also show a declining trend, albeit a more moderate one than that for the current-dollar ratios. In contrast, the ratio for nonfarm inventories to final sales of goods and structures and the ratio for manufacturing and trade inventories to sales exhibit no clear trend; they appear to follow a cyclical pattern in which their 1990-91 peaks are roughly equal to their previous cyclical peaks.

Tables 1 through 4 follow. 

Data Availability

Recent quarterly and monthly estimates of real manufacturing and trade inventories, sales, and inventory-sales ratios and of real manufacturing inventories by stage of fabrication that are consistent with the "final" quarterly GDP estimates are published in the January, April, July, and October issues of the SURVEY OF CURRENT BUSINESS.

Estimates from 1977 through the most recent "preliminary" or "final" estimates are available electronically to subscribers to STAT-USA's Economic Bulletin Board or Internet services. For information, call (202) 482-1986.

The estimates for 1977-95 are also available on printouts and diskette. (Estimates for 1967-76 will be available soon.) To order, write to the National Income and Wealth Division, BE-54, Bureau of Economic Analysis, U.S. Department of Commerce, Washington, DC 20230. Specify Real Manufacturing and Trade Inventories, Sales, and Ratios (Accession No. BEA 54-91-20-014 for printouts, BEA 54-91-40-409 for diskette), and include a check or money order for \$55.00 for printout or \$20.00 for diskette, payable to the Bureau of Economic Analysis. To order by telephone, call (202) 606-9700; MasterCard and VISA are accepted.

Table A.—Alternative Inventory-Sales Ratios: Fourth Quarters, 1981-95

	1981	1982	1983	1984	1985	1986	1987	1988	1989	1990	1991	1992	1993	1994	1995
	Based on current dollars														
Using replacement-cost inventories of domestic business (NIPA table 5.12):															
Inventories to final sales	3.53	3.30	3.08	3.11	2.94	2.73	2.78	2.74	2.71	2.68	2.56	2.44	2.40	2.44	2.47
Nonfarm inventories to final sales	3.06	2.83	2.67	2.72	2.58	2.43	2.49	2.46	2.44	2.41	2.33	2.20	2.19	2.23	2.28
Nonfarm inventories to final sales of goods and structures	4.83	4.63	4.38	4.46	4.35	4.14	4.30	4.25	4.27	4.30	4.25	4.04	4.01	4.07	4.17
Using pre-LIFO inventories (Census Bureau):															
Manufacturing and trade ¹		1.68	1.50	1.56	1.55	1.52	1.50	1.48	1.54	1.54	1.52	1.46	1.42	1.38	1.41
	Based on chained (1992) dollars														
Using real inventories of domestic business (NIPA table 5.13):															
Inventories to final sales	2.80	2.75	2.58	2.66	2.64	2.57	2.58	2.49	2.52	2.54	2.55	2.45	2.44	2.49	2.50
Nonfarm inventories to final sales	2.43	2.35	2.26	2.34	2.31	2.26	2.29	2.25	2.28	2.30	2.31	2.21	2.22	2.25	2.28
Nonfarm inventories to final sales of goods and structures	4.26	4.21	4.00	4.11	4.10	4.00	4.10	4.02	4.09	4.16	4.24	4.04	4.04	4.05	4.09
Manufacturing and trade	1.53	1.52	1.39	1.46	1.46	1.40	1.41	1.39	1.46	1.50	1.48	1.43	1.41	1.38	1.39

1. Inventory book values published by the Census Bureau include last-in, first-out (LIFO) reserve and are valued at current cost. See Census Bureau release, "Manufacturing and Trade: Inventories and Sales."

NOTE.—The fourth-quarter ratios are calculated as end-of-quarter inventories divided by quarterly sales at monthly rates, with the exception of the current-dollar ratios for manufacturing and trade, which are calculated as averages of the monthly ratios published by the Census Bureau.

Table 1.—Real Manufacturing and Trade Inventories, Seasonally Adjusted, End of Period

[Billions of chained (1992) dollars]

	1977				1978				1979				1980				1981			
	I	II	III	IV	I	II	III	IV	I	II	III	IV	I	II	III	IV	I	II	III	IV
Manufacturing and trade	552.0	558.0	567.6	573.7	583.7	593.2	598.5	609.5	616.5	624.4	626.5	629.3	634.2	636.6	632.3	631.9	638.4	640.4	646.1	647.8
Manufacturing	304.2	306.5	310.4	311.8	313.1	317.6	321.3	325.8	328.9	332.5	335.1	338.5	343.5	344.9	339.5	338.9	342.4	342.3	345.0	343.5
Durable goods	195.3	195.8	197.8	199.0	201.0	204.7	207.9	211.4	215.4	219.2	221.2	224.8	226.9	227.5	224.4	224.8	227.0	226.3	228.7	226.8
Primary metal industries	27.9	27.9	27.8	27.2	26.1	26.6	27.0	27.2	26.2	26.7	27.0	27.4	27.1	27.7	26.4	26.4	27.6	27.2	28.2	28.7
Fabricated metal products	23.5	23.7	24.3	24.4	24.9	25.2	25.4	25.6	26.0	26.3	26.2	26.1	26.2	25.5	24.9	25.3	24.9	24.6	24.8	24.4
Industrial machinery and equipment	36.7	36.6	36.6	37.4	38.0	38.8	39.4	40.5	41.4	42.2	43.0	43.8	44.6	45.5	45.5	45.4	45.6	46.1	46.2	45.3
Electronic and other electric equipment	21.2	21.8	22.2	22.8	23.5	24.4	25.1	25.3	26.3	26.9	27.6	28.8	29.3	29.3	29.1	29.0	29.6	30.2	30.7	30.4
Transportation equipment	46.5	45.8	46.9	46.7	47.2	47.9	48.6	49.7	51.8	53.0	53.7	54.5	54.7	54.2	53.4	53.3	53.8	53.3	52.6	51.2
Motor vehicles and equipment	15.4	16.0	16.5	16.5	16.4	16.6	17.0	17.0	18.6	18.1	17.8	16.6	15.6	14.6	13.8	13.8	13.5	13.0	12.8	11.9
Other transportation equipment	30.6	29.3	29.9	29.7	30.2	30.8	31.0	32.1	32.6	34.3	35.3	34.7	38.7	39.2	39.3	39.3	40.1	40.1	39.6	39.1
Other durable goods ¹	39.2	39.3	39.5	39.9	40.6	40.8	41.4	42.0	42.7	43.1	42.5	42.7	43.4	43.4	42.8	43.1	43.3	43.4	43.7	43.2
Nondurable goods	109.4	111.3	113.3	113.4	112.7	113.3	113.8	114.7	113.3	113.9	113.6	116.6	117.4	115.1	114.1	114.1	115.4	116.0	116.3	116.7
Food and kindred products	26.1	26.6	27.1	26.0	25.6	25.6	25.8	26.1	26.3	26.6	26.5	26.5	26.9	26.7	26.4	26.1	26.4	26.6	26.7	26.5
Paper and allied products	8.3	8.4	8.5	8.6	8.6	8.7	8.8	8.7	8.7	8.8	8.7	9.0	9.3	9.6	9.5	9.3	9.5	9.4	9.5	9.7
Chemicals and allied products	23.6	24.0	24.8	25.3	25.5	25.7	26.0	26.2	25.5	25.1	25.4	25.4	26.6	26.8	25.8	26.0	26.2	26.7	26.8	27.0
Petroleum and coal products	9.0	9.5	9.7	9.8	9.4	9.2	9.1	9.3	8.7	8.6	9.1	9.4	9.8	10.2	10.2	9.9	10.0	10.2	9.9	9.8
Rubber and miscellaneous plastic products	9.2	9.4	9.6	9.7	9.7	9.9	10.0	10.1	10.2	10.2	10.3	10.0	10.1	9.7	9.4	9.5	9.7	9.7	9.9	9.7
Other nondurable goods ²	33.0	33.3	33.4	34.1	34.0	34.3	34.3	34.4	34.7	34.1	34.0	33.3	33.9	34.0	33.4	33.1	33.4	33.0	33.4	34.0
Merchant wholesalers	106.0	108.1	111.5	114.5	119.9	122.8	123.6	127.2	130.9	132.0	133.6	133.8	135.0	137.0	132.9	140.1	142.4	141.3	141.6	143.5
Durable goods	70.8	72.2	74.1	76.2	79.9	82.1	83.1	85.6	87.6	88.0	89.8	89.8	90.8	92.5	92.6	94.6	95.8	97.1	96.5	97.6
Nondurable goods	35.1	35.7	37.3	38.2	39.8	40.5	40.4	41.4	43.2	43.8	43.7	43.9	44.1	44.4	46.3	45.5	46.5	44.2	45.1	45.9
Groceries and farm products	14.1	14.3	15.0	15.8	16.5	16.4	15.6	15.4	15.9	16.6	16.4	16.3	16.0	16.2	16.9	16.0	16.1	14.9	15.0	15.4
Other nondurable goods	20.6	20.9	21.7	21.7	22.7	23.6	24.4	25.7	27.2	26.9	27.0	27.4	27.9	28.1	29.3	30.3	29.3	30.3	30.2	30.6
Retail trade	137.8	139.5	141.8	143.7	147.4	149.5	150.2	153.1	153.4	156.7	154.2	153.1	151.4	150.4	149.6	148.9	149.5	153.0	155.7	157.2
Durable goods	73.3	74.4	76.3	77.7	80.0	80.3	80.3	83.1	84.4	87.2	84.5	82.8	80.4	77.8	75.9	75.5	74.7	77.5	77.9	78.2
Motor vehicle dealers ³	39.1	40.1	41.5	43.1	44.4	43.5	43.1	46.1	47.7	50.6	47.7	46.2	43.6	40.8	39.3	39.2	38.2	35.5	35.5	35.2
Other durable goods ³	34.5	34.6	35.1	35.1	36.1	37.1	37.4	37.5	37.4	37.4	37.4	37.1	37.1	37.1	36.7	36.4	41.8	42.0	42.4	43.0
Nondurable goods	64.7	65.4	65.8	66.3	67.7	69.5	70.2	70.3	69.3	69.9	70.0	70.7	71.3	72.8	73.8	73.6	75.0	75.7	77.9	79.2
Food stores	14.5	14.7	14.6	14.7	14.8	14.9	15.0	14.9	15.0	14.9	15.5	15.7	15.8	16.4	16.1	16.3	17.1	17.1	17.7	17.8
Other nondurable goods	50.2	50.7	51.2	51.5	53.0	54.7	55.3	55.5	54.3	55.1	54.6	55.0	55.4	56.4	57.8	57.3	57.9	58.6	60.3	61.4
	1982				1983				1984				1985				1986			
	I	II	III	IV	I	II	III	IV	I	II	III	IV	I	II	III	IV	I	II	III	IV
Manufacturing and trade	639.1	638.2	638.2	628.1	619.2	621.1	628.8	639.5	657.3	674.2	691.5	703.0	705.3	709.3	712.8	718.7	728.5	731.8	728.4	724.6
Manufacturing	340.3	336.6	335.0	329.5	321.7	323.1	325.2	329.5	335.9	346.4	356.5	358.4	356.7	356.9	355.8	353.9	354.3	355.1	350.6	349.7
Durable goods	222.9	222.1	220.1	215.0	208.0	209.0	209.3	213.4	218.0	225.4	233.3	236.9	236.2	236.7	236.1	233.2	232.3	231.3	229.2	228.3
Primary metal industries	28.3	26.8	26.1	24.7	23.3	23.2	22.8	23.0	23.7	24.1	23.3	22.3	21.7	21.4	20.8	20.2	20.0	19.1	19.4	19.4
Fabricated metal products	23.9	23.8	23.5	21.9	21.6	21.8	22.2	22.3	22.6	23.1	23.2	23.6	23.3	22.8	22.8	23.3	23.2	23.6	23.5	23.3
Industrial machinery and equipment	45.7	45.6	44.7	43.3	41.9	41.6	41.4	41.5	41.8	43.0	44.4	45.3	45.5	45.5	44.9	44.0	43.6	42.8	42.5	42.0
Electronic and other electric equipment	29.7	29.6	29.3	29.0	28.2	28.8	29.0	30.3	30.8	31.9	33.3	34.0	33.9	34.0	33.3	32.4	31.9	32.0	31.9	31.3
Transportation equipment	50.0	51.0	51.5	52.8	50.3	50.4	50.2	51.7	53.8	56.2	59.0	59.8	59.6	60.6	61.4	60.8	61.3	60.4	59.5	58.8
Motor vehicles and equipment	11.5	11.4	11.1	10.6	10.6	11.0	11.3	12.2	12.6	12.8	13.3	13.4	13.2	13.3	13.4	13.2	12.9	12.7	12.3	12.5
Other transportation equipment	38.4	39.5	40.4	42.1	39.6	39.3	38.7	39.3	41.1	43.1	45.5	46.3	46.3	47.1	47.8	47.5	48.3	47.6	47.0	46.1
Other durable goods ¹	42.5	42.6	42.5	41.4	40.7	41.3	42.1	43.1	44.4	46.2	48.0	49.4	50.3	51.0	51.3	51.2	51.4	51.7	52.2	52.9
Nondurable goods	117.3	114.5	114.9	114.4	113.6	114.0	115.8	116.0	117.8	121.0	123.1	121.5	120.5	120.2	119.7	120.7	122.0	123.9	121.4	121.5
Food and kindred products	25.7	25.1	26.0	26.3	26.0	25.3	25.6	25.5	25.6	25.6	25.6	25.6	25.6	25.8	26.2	26.1	25.6	25.6	25.5	25.9
Paper and allied products	9.9	9.8	9.8	9.7	9.7	9.8	9.9	10.1	10.2	10.5	10.9	11.1	11.3	11.1	11.0	11.1	11.2	11.3	11.5	11.4
Chemicals and allied products	26.9	26.2	25.7	25.1	25.0	25.1	25.5	25.9	26.6	27.9	28.9	28.1	27.7	28.2	28.4	28.1	28.0	28.5	28.1	28.8
Petroleum and coal products	10.8	9.8	10.2	10.4	10.7	10.4	10.5	10.0	10.2	10.5	10.6	10.2	10.1	9.8	8.8	9.7	11.1	12.5	11.0	9.9
Rubber and miscellaneous plastic products	9.5	9.4	9.2	9.1	8.9	9.2	9.4	9.5	9.8	10.2	10.3	10.1	10.1	10.2	10.3	10.4	10.5	10.5	10.3	10.5
Other nondurable goods ²	33.7	33.9	33.5	33.2	32.5	33.6	34.3	34.7	35.3	36.0	36.7	36.3	35.6	35.1	35.2	35.4	35.6	35.4	35.1	35.3
Merchant wholesalers	142.0	144.8	143.7	142.1	140.5	136.9	139.0	141.9	145.2	147.6	153.8	156.2	158.5	159.9	161.4	162.5	165.8	168.1	172.8	169.7
Durable goods	97.7	98.9	97.9	95.5	92.5	90.2	91.7	93.9	96.6	98.5	102.5	104.5	105.2	105.4	105.1	105.6	107.2	109.1	111.2	109.1
Nondurable goods	44.3	45.8	45.7	46.5	4															

Table 1.—Real Manufacturing and Trade Inventories, Seasonally Adjusted, End of Period—Continued

[Billions of chained (1992) dollars]

	1987				1988				1989				1990				1991			
	I	II	III	IV	I	II	III	IV	I	II	III	IV	I	II	III	IV	I	II	III	IV
	Manufacturing and trade	733.5	740.3	741.7	755.9	760.4	765.7	772.9	780.8	790.8	801.8	808.8	817.6	818.2	827.5	832.3	830.1	827.4	821.2	824.3
Manufacturing	348.8	349.4	351.5	354.8	356.4	357.3	358.3	364.3	369.0	376.0	382.1	383.5	386.9	389.2	391.1	390.1	390.4	386.1	384.5	384.0
Durable goods	227.3	228.0	229.0	230.7	231.2	231.9	232.6	237.3	242.5	246.8	249.8	251.2	253.0	253.5	254.5	254.1	251.7	248.1	246.8	245.0
Primary metal industries	18.8	18.8	19.1	19.3	19.8	19.6	20.1	20.3	20.5	21.0	21.0	20.9	20.9	20.9	21.1	21.1	21.3	21.1	20.9	20.5
Fabricated metal products	23.6	23.3	23.4	23.2	23.1	23.0	23.4	23.4	23.8	23.7	24.2	23.9	24.3	23.9	23.9	23.8	23.7	23.2	23.2	23.4
Industrial machinery and equipment	41.2	41.3	40.6	40.9	41.0	41.5	42.3	42.9	44.1	45.4	46.2	46.8	47.1	47.1	46.7	46.5	46.8	46.4	46.2	45.8
Electronic and other electric equipment	31.8	32.1	32.1	32.3	31.6	31.1	30.6	30.7	30.7	30.7	31.2	31.7	31.7	31.6	31.6	31.1	30.5	30.1	29.8	29.7
Transportation equipment	58.8	59.0	60.4	61.3	62.3	64.2	63.4	65.4	67.9	69.7	70.8	72.8	73.1	74.6	75.6	77.1	76.2	74.5	73.9	72.5
Motor vehicles and equipment	12.5	12.6	12.7	12.8	12.9	12.9	12.5	13.0	13.1	13.1	13.1	12.7	12.6	12.8	12.9	13.2	13.1	13.0	12.9	12.9
Other transportation equipment	46.2	46.4	47.6	48.3	49.3	51.2	50.8	52.4	54.7	56.5	57.6	60.1	60.6	61.8	62.7	63.9	63.1	61.5	61.0	59.6
Other durable goods ¹	52.7	53.1	53.1	53.4	53.0	52.3	52.3	54.2	55.3	56.1	56.3	55.0	55.7	55.4	55.5	54.5	53.1	52.6	52.7	53.1
Nondurable goods	121.7	121.4	122.5	124.1	125.3	125.5	125.8	127.1	126.6	129.2	132.4	132.3	134.0	135.7	136.7	136.0	138.7	138.0	137.7	139.0
Food and kindred products	26.3	26.7	26.9	26.6	26.6	26.6	25.9	26.9	26.8	27.1	28.1	28.5	28.3	28.6	29.4	29.5	29.6	29.4	30.1	30.5
Paper and allied products	11.8	11.8	11.8	11.9	11.6	11.6	11.9	12.1	11.9	12.3	12.7	12.7	12.8	13.0	13.0	13.0	13.3	13.3	13.2	13.6
Chemicals and allied products	28.1	27.7	28.2	28.8	29.5	29.4	29.9	30.4	31.0	31.8	32.3	32.0	32.1	32.8	33.0	33.2	33.8	33.8	33.7	34.0
Petroleum and coal products	9.0	8.6	9.0	10.0	10.8	10.4	10.4	9.9	9.5	10.0	10.3	10.1	11.2	11.7	11.4	10.9	12.7	12.5	11.6	11.1
Rubber and miscellaneous plastic products	10.6	10.5	10.7	10.7	10.7	10.9	11.1	11.2	11.5	11.5	11.7	11.6	11.6	11.8	12.0	12.1	12.0	12.2	12.0	12.0
Other nondurable goods ²	36.1	36.2	36.0	36.3	36.2	36.8	36.9	36.6	36.0	36.7	37.4	37.5	37.9	37.6	37.8	37.2	37.2	36.9	37.0	37.7
Merchant wholesalers	170.5	172.6	172.5	177.0	181.5	183.5	187.0	185.2	184.2	187.7	188.2	189.2	190.6	194.1	196.1	196.3	198.4	197.0	198.1	201.9
Durable goods	109.8	111.8	110.3	113.2	116.8	116.2	120.3	118.8	118.7	121.8	121.3	121.3	122.7	124.2	125.8	125.0	126.5	124.1	123.6	126.2
Nondurable goods	60.6	60.7	62.2	63.8	64.8	67.3	66.7	66.4	65.5	65.9	66.9	67.9	68.0	70.0	70.4	71.4	71.9	72.8	74.5	75.7
Groceries and farm products	22.1	22.2	22.9	22.9	24.2	24.8	24.7	23.6	22.5	22.1	22.2	23.7	23.4	23.5	24.1	25.2	25.2	25.5	27.0	28.9
Other nondurable goods	38.5	38.4	39.3	40.8	41.5	42.4	41.9	42.8	43.0	43.9	44.7	44.2	44.6	46.5	46.3	46.2	46.7	47.3	47.4	48.8
Retail trade	213.7	218.0	217.3	223.9	222.3	224.8	227.5	231.3	237.6	238.1	238.4	245.0	240.5	245.1	245.0	243.5	238.4	238.0	241.7	243.3
Durable goods	111.8	114.9	113.5	119.0	115.8	118.6	120.8	124.5	129.4	127.5	128.4	131.4	127.3	130.2	131.6	130.0	124.2	124.1	126.4	125.2
Motor vehicle dealers ³	57.8	58.8	56.9	60.7	56.5	58.7	59.6	62.7	67.5	65.0	62.1	67.1	62.2	64.3	66.2	65.6	60.9	61.2	62.7	61.9
Other durable goods ³	54.0	56.1	56.5	58.3	59.3	59.9	61.3	61.9	62.0	62.7	64.0	64.3	65.1	65.9	65.4	64.5	63.4	63.0	63.7	63.3
Nondurable goods	102.1	103.2	104.0	104.9	106.5	106.3	106.7	106.8	108.3	110.6	112.4	113.7	113.2	113.9	113.4	113.5	114.2	113.9	115.3	118.1
Food stores	22.6	22.6	22.4	22.3	23.3	23.2	23.1	23.4	23.4	23.6	24.3	24.8	24.3	24.8	25.2	25.6	25.9	25.4	25.7	26.1
Other nondurable goods	79.5	80.6	81.6	82.6	83.3	83.2	83.7	83.4	84.9	87.0	88.1	88.9	88.9	89.1	88.2	87.9	88.3	88.5	89.6	92.0
	1992				1993				1994				1995				1996			
	I	II	III	IV	I	II	III	IV	I	II	III	IV	I	II	III	IV	Mar.	Apr.	May	June
Manufacturing and trade	824.9	826.7	829.9	831.6	840.7	846.2	852.7	855.5	860.6	872.9	884.3	895.0	906.1	913.6	921.4	923.4	860.6	862.6	869.8	872.9
Manufacturing	380.6	377.5	378.5	374.7	375.0	377.7	379.6	380.2	382.8	383.9	386.9	388.5	390.7	393.5	397.6	400.4	382.8	382.7	383.8	383.9
Durable goods	240.7	237.9	236.7	232.2	232.2	233.7	235.2	236.4	237.9	240.0	242.1	244.1	246.1	248.6	252.3	255.3	237.9	238.1	239.4	240.0
Primary metal industries	20.2	20.2	20.2	20.0	19.9	20.1	20.3	20.4	20.3	20.4	20.4	20.6	20.8	21.3	21.3	21.5	20.3	20.2	20.4	20.4
Fabricated metal products	23.5	23.6	23.9	23.5	23.5	23.2	23.5	23.2	23.0	23.1	23.5	23.7	23.7	23.7	23.4	23.1	23.0	23.0	23.1	23.1
Industrial machinery and equipment	45.3	45.2	45.8	45.9	45.2	46.4	47.5	49.0	50.6	51.5	52.3	52.9	54.1	54.9	55.5	56.9	50.6	50.9	51.0	51.5
Electronic and other electric equipment	29.8	29.7	29.9	29.8	30.0	30.4	30.6	31.1	32.3	33.8	35.4	37.0	38.7	39.8	42.1	43.6	32.3	32.8	33.4	33.8
Transportation equipment	69.5	66.3	64.4	61.2	61.8	62.0	61.4	60.7	59.4	59.1	58.2	57.6	57.2	56.8	56.9	56.4	59.4	59.3	59.4	59.1
Motor vehicles and equipment	12.9	13.0	13.2	12.8	13.1	13.4	13.1	13.4	13.4	13.7	13.8	13.8	13.9	13.7	13.3	13.2	13.4	13.4	13.6	13.7
Other transportation equipment	56.6	53.3	51.1	48.4	48.7	48.6	48.3	47.3	46.0	45.4	44.4	43.8	43.3	43.0	43.6	43.2	46.0	45.9	45.8	45.4
Other durable goods ¹	52.4	52.8	52.5	51.8	51.7	51.6	52.0	52.2	52.5	52.3	52.7	52.8	52.3	52.7	53.7	54.5	52.5	52.2	52.4	52.3
Nondurable goods	139.9	139.6	141.8	142.5	142.8	144.0	144.4	143.8	144.9	143.9	144.8	144.5	144.6	144.9	145.4	145.2	144.9	144.6	144.4	143.9
Food and kindred products	30.6	31.1	31.6	31.4	31.6	32.1	31.7	31.4	31.5	31.7	32.5	32.1	32.3	31.8	31.7	31.3	31.5	31.7	31.8	31.7
Paper and allied products	13.7	13.7	13.9	13.8	13.8	13.6	13.8	13.8	13.8	13.8	13.8	13.4	13.4	13.6	13.9	14.2	13.8	13.8	13.9	13.8
Chemicals and allied products	34.3	34.3	35.0	35.3	35.3	35.4	35.8	35.4	35.7	35.5	35.0	34.9	34.3	34.9	35.1	35.0	35.7	35.7	35.6	35.5
Petroleum and coal products	11.7	10.7	10.7	11.1	10.8	10.5	10.4	10.8	11.4	10.1	10.4	11.2	11.2	11.0	11.2	11.4	11.4	10.9	10.4	10.1
Rubber and miscellaneous plastic products	11.8	11.9	12.1	12.4	12.3	12.6	12.7	12.8	13.1	13.1	13.5	13.5	13.6	13.7	13.6	13.1	13.0	13.0	13.1	13.1
Other nondurable goods ²	37.8	37.8	38.5	38.5	38.9	39.6	39.9	39.5	39.6	39.5	39.4	39.4	39.8	39.9	39.9	39.6	39.6	39.5	39.5	39.5
Merchant wholesalers	202.3	205.1	206.3	209.8	210.4	212.3	215.4	215.4	215.2	220.7	225.1	229.9	235.7	239.0	241.9	242.9	215.2	217.2	221.0	220.7
Durable goods	125.0	127.9	128.8	130.0																

Table 1.—Real Manufacturing and Trade Inventories, Seasonally Adjusted, End of Period—Continued

[Billions of chained (1992) dollars]

	1994						1995												1996	
	July	Aug.	Sep.	Oct.	Nov.	Dec.	Jan.	Feb.	Mar.	Apr.	May	June	July	Aug.	Sep.	Oct.	Nov.	Dec.	Jan. [/]	Feb. [/]
Manufacturing and trade	877.0	882.5	884.3	890.4	893.4	895.0	901.2	903.8	906.1	909.9	911.0	913.6	917.0	918.6	921.4	926.7	927.0	923.4	925.9	927.1
Manufacturing	387.1	387.8	386.9	387.3	388.2	388.5	390.1	390.8	390.7	391.5	392.8	393.5	395.2	395.2	397.6	399.2	399.5	400.4	402.8	404.0
Durable goods	241.9	242.8	242.1	242.7	243.8	244.1	245.5	246.0	246.1	247.2	248.4	248.6	250.4	250.8	252.3	254.3	254.7	255.3	257.4	258.3
Primary metal industries	20.5	20.5	20.4	20.5	20.6	20.6	20.6	20.6	20.8	21.0	21.1	21.3	21.3	21.3	21.4	21.4	21.4	21.5	21.6	21.6
Fabricated metal products	23.7	23.7	23.5	23.5	23.5	23.7	23.6	23.5	23.7	23.7	23.8	23.7	23.7	23.6	23.4	23.3	23.3	23.1	23.1	23.3
Industrial machinery and equipment	51.8	52.4	52.3	52.6	53.2	52.9	54.0	54.3	54.1	54.3	54.9	54.9	55.1	55.3	55.5	55.9	56.7	56.9	57.9	58.4
Electronic and other electric equipment	34.4	34.9	35.4	36.1	36.6	37.0	37.8	38.5	38.7	39.1	39.3	39.8	40.7	41.2	42.1	43.1	43.0	43.6	44.1	43.8
Transportation equipment	59.3	58.9	58.2	57.8	57.6	57.6	57.4	56.9	57.2	57.0	57.5	56.8	57.0	56.8	56.9	57.2	56.7	56.4	56.7	57.2
Motor vehicles and equipment	13.9	13.7	13.8	13.6	13.7	13.8	13.8	13.8	13.9	13.9	14.0	13.7	13.9	13.5	13.3	13.4	13.3	13.2	13.5	13.4
Other transportation equipment	45.4	45.2	44.4	44.3	44.0	43.8	43.6	43.2	43.3	43.1	43.5	43.0	43.1	43.3	43.6	43.8	43.4	43.2	43.3	43.8
Other durable goods ¹	52.5	52.8	52.7	52.6	52.8	52.8	52.7	52.6	52.3	52.6	52.5	52.7	53.1	53.3	53.7	54.2	54.5	54.5	54.8	54.8
Nondurable goods	145.2	145.1	144.8	144.7	144.5	144.5	144.7	144.8	144.6	144.4	144.4	144.9	144.9	144.5	145.4	145.0	144.9	145.2	145.5	145.8
Food and kindred products	32.2	32.4	32.5	32.6	32.4	32.1	32.3	32.3	32.3	32.0	31.8	31.8	31.6	31.3	31.7	31.6	31.4	31.3	31.1	31.2
Paper and allied products	13.9	13.9	13.8	13.6	13.5	13.4	13.5	13.4	13.4	13.4	13.4	13.6	13.7	13.7	13.9	14.0	14.1	14.2	14.3	14.5
Chemicals and allied products	35.7	35.4	35.0	34.7	34.7	34.9	34.6	34.5	34.3	34.4	34.7	34.9	34.9	34.9	35.1	34.8	34.7	35.0	35.0	35.1
Petroleum and coal products	10.3	10.5	10.4	10.7	11.0	11.2	11.5	11.4	11.2	11.0	10.9	11.0	11.1	11.1	11.2	11.1	11.2	11.4	11.4	11.2
Rubber and miscellaneous plastic products	13.3	13.3	13.5	13.5	13.2	13.5	13.5	13.7	13.6	13.8	13.7	13.7	13.7	13.6	13.6	13.6	13.6	13.6	13.7	13.7
Other nondurable goods ²	39.7	39.5	39.4	39.3	39.6	39.4	39.3	39.5	39.8	39.8	39.9	39.9	39.9	39.9	39.9	39.8	39.8	39.6	39.9	39.8
Merchant wholesalers	223.2	223.7	225.1	227.9	229.3	229.9	232.4	233.6	235.7	237.8	237.8	239.0	241.4	241.3	241.9	243.4	243.3	242.9	244.3	243.8
Durable goods	139.9	139.9	140.6	142.3	143.0	143.4	145.3	146.9	148.4	149.4	150.0	150.9	151.7	151.7	152.1	153.4	154.5	154.9	156.2	156.0
Nondurable goods	83.3	83.8	84.6	85.6	86.4	86.6	87.2	86.7	87.3	88.4	87.8	88.2	89.8	89.7	89.9	90.1	88.8	88.0	88.1	87.8
Groceries and farm products	26.7	27.0	28.1	28.2	28.6	29.1	28.9	28.3	28.5	28.1	28.0	28.6	29.7	29.9	30.1	30.0	29.2	28.6	28.5	28.1
Other nondurable goods	56.6	56.8	56.6	57.4	57.7	57.5	58.3	58.5	58.9	60.3	59.8	59.6	60.1	59.8	59.8	60.1	59.7	59.5	59.6	59.7
Retail trade	266.3	270.6	271.8	274.7	275.3	276.1	278.2	279.0	279.3	280.2	280.0	280.7	279.9	281.6	281.4	283.7	283.8	279.7	278.4	279.0
Durable goods	137.6	140.8	140.8	142.6	143.1	143.8	145.6	145.8	146.9	148.2	147.5	147.8	147.3	148.1	148.2	149.6	149.9	147.3	145.8	146.2
Motor vehicle dealers ³	66.6	68.6	68.2	68.8	68.9	70.3	71.5	71.7	72.7	73.0	72.4	72.6	72.3	71.5	71.0	72.1	72.0	71.1	69.8	69.5
Other durable goods ³	71.2	72.3	72.8	73.9	74.4	73.6	74.2	74.1	74.2	75.3	75.2	75.3	75.1	76.8	77.4	77.7	78.1	76.4	76.2	76.9
Nondurable goods	128.6	129.6	130.9	132.0	132.2	132.2	132.5	133.1	132.2	131.8	132.3	132.7	132.4	133.4	133.0	133.8	133.7	132.1	132.4	132.6
Food stores	26.7	26.8	27.1	27.1	27.0	26.9	26.9	26.9	26.8	26.7	26.8	27.0	27.3	27.5	27.3	27.1	27.1	27.1	27.0	27.0
Other nondurable goods	102.0	102.8	103.8	105.0	105.2	105.2	105.6	106.2	105.5	105.1	105.5	105.8	105.2	105.9	105.7	106.7	106.7	105.0	105.5	105.6

[/] Preliminary.

1. Includes lumber and wood products; furniture and fixtures; stone, clay, and glass products; instruments and related products; and miscellaneous manufacturing industries.

2. Includes tobacco manufacturers; textile mill products; apparel products; printing and publishing; and leather and leather products.

3. Prior to 1981, inventories and sales of auto and home supply stores are included in motor vehicle dealers.

Beginning with 1981, these inventories are included in "other durable goods".

NOTES.—Manufacturing inventories are classified by the type of product produced by the establishment holding the inventory. Trade inventories are classified by the type of product sold by the establishment holding the inventory.

Chained (1992) dollar series are calculated as the product of the chain-type quantity index and the 1992 current-dollar value of the corresponding series, divided by 100. Because the formula for the chain-type quantity indexes uses weights of more than one period, the corresponding chained-dollar estimates are usually not additive.

Table 2.—Real Manufacturing and Trade Sales, Seasonally Adjusted at Monthly Rate

[Billions of chained (1992) dollars]

	1977				1978				1979				1980				1981			
	I	II	III	IV	I	II	III	IV	I	II	III	IV	I	II	III	IV	I	II	III	IV
Manufacturing and trade	403.6	409.4	414.0	421.3	420.5	440.0	441.5	448.7	449.0	449.6	448.5	445.4	442.2	420.9	428.6	445.4	446.0	440.3	437.1	424.5
Manufacturing	195.8	197.5	200.2	204.0	201.3	210.3	210.3	213.8	215.2	213.1	210.8	207.5	206.3	193.3	194.8	204.2	204.9	204.4	201.5	193.7
Durable goods	96.9	97.8	99.4	101.7	100.4	106.0	106.0	109.3	109.8	107.7	106.6	104.0	103.5	95.0	96.7	102.6	101.9	104.0	101.2	95.2
Primary metal industries	12.0	12.4	12.3	12.8	12.6	13.7	14.0	14.3	13.9	13.7	13.6	12.7	12.6	11.4	11.3	12.7	13.0	13.3	13.2	11.7
Fabricated metal products	12.8	12.9	12.8	13.4	12.9	13.6	13.5	13.9	13.8	13.3	13.3	12.9	12.5	11.7	11.9	13.0	12.9	13.0	12.5	11.7
Industrial machinery and equipment	11.4	11.6	12.0	12.3	12.4	13.2	13.3	13.7	14.1	14.3	14.6	14.2	14.6	14.1	14.3	14.7	15.1	15.0	15.0	14.6
Electronic and other electric equipment	11.1	11.2	11.5	11.7	11.7	12.0	12.3	12.6	12.9	13.1	13.0	13.1	13.3	12.4	12.5	13.0	12.6	12.9	12.8	12.4
Transportation equipment	28.3	27.9	28.4	28.3	28.2	29.7	29.3	31.4	32.4	29.5	27.9	27.2	26.6	23.0	23.6	25.2	23.9	25.5	23.9	22.1
Motor vehicles and equipment	19.1	18.8	19.2	19.0	18.8	19.8	19.5	21.2	21.4	18.8	16.7	15.9	14.9	11.6	12.3	14.1	12.9	14.3	13.2	11.7
Other transportation equipment	8.8	8.8	8.9	9.0	9.1	9.6	9.5	9.9	10.7	10.4	11.2	11.3	11.7	11.6	11.4	11.1	11.1	11.2	10.8	10.5
Other durable goods ¹	22.7	22.9	23.2	23.7	23.4	24.9	25.0	25.9	26.2	25.5	25.1	24.4	24.3	22.3	22.6	24.1	23.9	24.5	23.9	22.4
Nondurable goods	97.6	98.1	99.1	100.6	98.9	102.2	102.9	102.8	104.9	104.7	103.0	101.8	101.0	96.5	96.6	100.3	102.1	98.6	98.5	97.1
Food and kindred products	26.3	26.6	27.2	27.2	26.8	27.1	27.3	26.8	26.9	26.6	26.3	26.7	27.0	27.0	26.6	26.4	27.3	27.9	27.5	27.3
Paper and allied products	8.5	8.4	8.1	8.3	8.5	8.7	8.8	8.8	8.8	9.0	9.1	8.8	8.8	8.5	8.7	8.9	8.9	8.9	8.7	8.7
Chemicals and allied products	19.4	19.7	19.9	20.3	20.2	21.6	21.2	21.2	22.1	22.5	22.0	21.5	21.3	20.0	20.5	21.9	21.6	21.3	21.1	20.0
Petroleum and coal products	13.1	12.8	13.0	13.2	12.5	12.8	13.4	13.8	14.3	14.1	13.9	13.5	13.0	11.9	11.8	12.6	13.1	11.1	11.5	11.7
Rubber and miscellaneous plastic products	5.5	5.6	5.7	5.9	5.8	6.1	6.1	6.1	6.3	6.1	5.7	5.5	5.6	5.0	5.2	5.5	5.4	5.8	5.8	5.5
Other nondurable goods ²	25.2	25.6	26.0	26.4	26.2	27.1	26.4	26.4	25.7	25.9	26.2	26.5	26.3	25.5	25.1	25.7	25.6	25.9	25.9	25.1
Merchant wholesalers	91.7	94.3	95.5	97.0	99.2	104.9	106.5	107.7	107.0	110.4	111.2	111.4	111.2	108.2	112.3	117.7	116.4	113.2	112.3	110.2
Durable goods	41.2	42.7	43.6	45.1	46.2	49.4	50.2	50.9	50.8	52.7	53.5	53.4	53.9	51.3	52.2	54.3	54.8	54.7	53.7	51.2
Nondurable goods	50.6	51.7	52.0	52.0	53.1	55.6	56.3	56.9	56.3	57.8	57.9	58.2	57.6	57.0	60.0	63.2	61.6	58.7	58.8	58.9
Groceries and farm products	22.6	24.0	24.1	23.7	24.0	25.0	25.1	24.1	24.4	25.2	25.4	25.2	25.6	26.2	25.9	26.4	26.7	25.5	26.5	26.4
Other nondurable goods	29.9	30.5	30.7	30.7	31.3	32.8	33.3	33.6	33.2	34.1	34.2	34.3	34.0	33.6	35.4	37.3	36.4	34.7	34.7	34.8
Retail trade	116.3	117.8	118.4	120.4	119.9	124.6	124.4	127.0	126.6	125.6	126.1	126.1	124.3	118.8	120.8	122.2	123.7	121.8	121.8	122.6
Durable goods	36.6	37.7	37.6	38.5	37.5	40.9	40.3	42.0	41.5	40.9	41.1	40.3	39.1	34.8	36.4	37.2	38.7	36.5	37.5	35.3
Motor vehicle dealers ³	23.1	23.9	23.8	24.4	23.8	26.1	25.0	26.3	26.2	25.0	24.6	24.0	23.1	19.6	21.1	21.3	20.7	19.0	20.2	18.6
Other durable goods ³	13.6	14.0	14.0	14.2	13.9	15.0	15.4	15.9	15.5	16.0	16.5	16.2	15.9	15.0	15.2	15.7	17.9	17.3	17.2	16.6
Nondurable goods	80.2	80.5	81.3	82.3	83.0	84.0	84.5	85.3	85.5	85.1	85.4	86.3	85.6	84.6	84.9	85.6	85.5	85.8	85.6	85.3
Food stores	28.1	28.2	28.3	28.6	28.9	28.6	28.6	29.0	29.2	29.3	29.4	30.0	30.3	30.1	29.9	29.6	29.6	29.8	29.7	29.9
Other nondurable goods	52.3	52.5	53.1	53.9	54.2	55.5	55.9	56.4	56.4	55.9	56.0	56.4	55.5	54.7	55.2	56.1	56.0	56.1	56.0	55.5

See footnotes at end of table.

Table 2.—Real Manufacturing and Trade Sales, Seasonally Adjusted at Monthly Rate—Continued

[Billions of chained (1992) dollars]

	1994						1995												1996	
	July	Aug.	Sep.	Oct.	Nov.	Dec.	Jan.	Feb.	Mar.	Apr.	May	June	July	Aug.	Sep.	Oct.	Nov.	Dec.	Jan. [/]	Feb. [/]
Manufacturing and trade	628.8	643.6	641.1	644.3	649.8	653.9	654.5	652.7	650.9	645.6	649.9	655.5	647.7	659.4	660.5	660.6	665.9	671.4	671.6	672.5
Manufacturing	273.3	281.8	279.1	277.2	282.9	286.1	285.9	284.7	284.3	280.0	281.5	283.3	277.3	286.3	287.6	286.6	288.1	290.7	290.5	291.3
Durable goods	143.2	149.8	147.7	146.7	150.7	151.3	152.7	152.0	152.7	149.5	151.5	153.0	147.7	155.4	157.1	155.9	156.7	158.4	158.9	159.4
Primary metal industries	12.7	13.1	13.1	13.1	13.2	13.8	13.5	13.2	13.3	13.0	13.3	13.2	13.0	13.2	13.3	13.4	13.3	13.4	13.3	13.2
Fabricated metal products	15.3	15.6	15.4	15.2	15.6	15.1	16.0	15.5	15.3	15.3	15.4	15.2	15.3	15.6	15.5	15.6	15.4	15.5	15.3	15.5
Industrial machinery and equipment	27.2	28.1	27.9	28.5	28.6	28.9	29.2	30.0	30.2	30.9	31.0	30.2	31.7	32.2	32.1	32.2	32.1	32.2	33.0	33.9
Electronic and other electric equipment	22.7	23.1	23.2	23.5	24.2	24.3	24.4	24.2	25.0	24.6	25.4	26.3	25.7	27.0	27.4	27.3	27.7	28.3	28.2	28.0
Transportation equipment	33.2	37.6	36.0	34.6	37.0	36.5	36.7	36.4	36.4	34.9	34.3	35.0	32.0	35.3	36.3	35.3	35.6	35.7	35.5	35.8
Motor vehicles and equipment	22.6	26.3	25.1	23.9	25.6	26.0	25.6	25.3	25.3	23.8	23.5	23.9	21.5	24.9	25.7	25.3	24.6	24.7	24.8	25.0
Other transportation equipment	10.6	11.3	10.9	10.6	11.3	10.5	11.1	11.1	11.0	11.1	10.8	11.1	10.5	10.4	10.6	10.1	11.0	11.0	10.1	10.2
Other durable goods ¹	34.1	36.1	35.4	35.2	36.3	36.4	36.7	36.6	36.9	36.1	36.5	37.0	35.5	37.6	38.2	37.9	38.0	38.5	38.3	38.3
Nondurable goods	129.2	131.1	130.7	130.1	132.2	135.0	132.7	132.3	130.9	129.5	129.1	129.3	128.8	130.3	130.1	130.4	131.2	132.2	131.6	131.8
Food and kindred products	35.3	35.8	35.8	36.0	36.4	37.5	36.2	35.8	35.5	36.0	35.7	35.9	35.7	36.1	36.3	36.2	36.2	36.2	35.1	35.3
Paper and allied products	11.6	11.9	11.8	11.7	11.8	11.7	11.8	11.8	11.6	11.5	11.5	11.5	11.1	11.2	11.2	11.2	11.2	11.3	11.2	11.4
Chemicals and allied products	27.5	28.1	28.2	27.5	28.1	28.1	27.7	27.4	27.3	26.4	26.7	27.1	27.3	27.3	26.9	27.4	27.2	27.5	27.8	27.8
Petroleum and coal products	12.5	12.3	12.1	12.1	12.6	13.6	13.5	14.2	13.6	13.3	12.8	12.5	12.9	13.0	13.0	12.9	13.8	14.1	14.2	14.0
Rubber and miscellaneous plastic products	10.9	11.3	11.2	11.2	11.3	11.5	11.4	11.3	11.3	11.1	11.1	10.9	10.6	11.1	11.2	11.1	11.1	11.2	11.3	11.3
Other nondurable goods ²	32.1	32.5	32.3	31.8	31.9	32.3	32.5	32.2	32.2	32.2	31.9	32.1	31.8	32.0	31.7	31.7	31.8	31.9	31.7	31.7
Merchant wholesalers	168.9	172.8	171.9	174.7	174.1	175.1	175.5	176.8	174.4	174.1	175.2	177.2	176.0	177.4	177.3	179.2	181.1	183.2	181.9	181.5
Durable goods	86.9	89.7	89.2	90.1	90.4	91.6	91.3	92.0	91.3	90.2	91.9	92.4	91.0	92.0	93.3	93.9	95.6	97.9	96.5	96.4
Nondurable goods	82.0	83.0	82.6	84.6	83.7	83.5	84.2	84.8	83.1	83.9	83.2	84.8	85.0	85.3	84.0	85.2	85.5	85.2	85.1	84.8
Groceries and farm products	31.2	32.1	31.7	33.0	32.7	31.7	32.3	32.1	31.4	31.6	31.5	32.2	31.6	32.5	32.2	32.8	31.9	31.6	28.9	28.5
Other nondurable goods	48.4	49.0	48.7	50.0	49.4	49.3	49.7	50.1	49.0	49.5	49.1	50.0	50.2	50.4	49.6	50.3	50.5	50.3	50.3	50.4
Retail trade	186.6	189.0	192.4	192.8	192.7	193.0	193.0	192.2	191.5	193.3	195.0	194.4	195.7	195.6	194.9	196.6	197.6	199.2	199.6	199.6
Durable goods	71.3	73.2	73.9	75.7	75.8	75.5	74.8	73.8	74.3	73.7	74.7	76.0	75.7	77.1	76.3	76.7	77.7	78.3	79.9	80.1
Motor vehicle dealers ³	37.8	38.9	39.3	40.7	40.6	40.5	39.8	39.2	39.5	39.0	39.8	41.0	40.6	41.7	40.8	41.0	41.3	42.0	3.7	3.9
Other durable goods ³	33.5	34.3	34.6	34.9	35.2	35.0	34.9	34.6	34.8	34.7	34.9	35.0	35.1	35.4	35.5	35.7	36.4	36.3	36.1	36.4
Nondurable goods	115.3	115.7	116.2	116.6	116.9	117.1	118.2	117.4	117.8	117.7	118.5	118.9	118.6	118.4	119.2	118.0	118.8	119.2	119.5	119.7
Food stores	32.8	32.9	33.1	33.1	33.3	33.1	33.8	33.3	33.1	33.1	33.1	33.0	33.1	33.0	33.1	33.1	33.2	33.4	33.6	33.6
Other nondurable goods	82.5	82.8	83.2	83.5	83.6	84.1	84.4	84.1	84.7	84.6	85.4	85.9	85.5	86.1	84.9	85.7	85.8	85.8	85.9	86.0

[/] Preliminary.

1. Includes lumber and wood products; furniture and fixtures; stone, clay, and glass products; instruments and related products; and miscellaneous manufacturing industries.

2. Includes tobacco manufacturers; textile mill products; apparel products; printing and publishing; and leather and leather products.

3. Prior to 1981, inventories and sales of auto and home supply stores are included in motor vehicle dealers.

Beginning with 1981, these inventories are included in "other durable goods".

NOTES.—Manufacturing inventories are classified by the type of product produced by the establishment holding the inventory. Trade inventories are classified by the type of product sold by the establishment holding the inventory.

Chained (1992) dollar series are calculated as the product of the chain-type quantity index and the 1992 current-dollar value of the corresponding series, divided by 100. Because the formula for the chain-type quantity indexes uses weights of more than one period, the corresponding chained-dollar estimates are usually not additive.

Table 3.—Real Inventory-Sales Ratios for Manufacturing and Trade, Seasonally Adjusted—Continued

[Ratio, based on chained (1992) dollars]

	1987				1988				1989				1990				1991				
	I	II	III	IV	I	II	III	IV	I	II	III	IV	I	II	III	IV	I	II	III	IV	
Manufacturing and trade	1.41	1.41	1.40	1.41	1.40	1.39	1.40	1.39	1.41	1.43	1.44	1.46	1.45	1.46	1.47	1.50	1.53	1.48	1.47	1.48	
Manufacturing	1.51	1.51	1.50	1.49	1.48	1.46	1.46	1.47	1.47	1.52	1.56	1.57	1.57	1.57	1.57	1.61	1.66	1.60	1.56	1.57	
Durable goods	1.94	1.94	1.92	1.89	1.88	1.84	1.83	1.83	1.87	1.94	1.98	2.01	2.01	1.98	1.99	2.07	2.15	2.03	1.96	1.97	
Primary metal industries	1.85	1.76	1.72	1.64	1.73	1.63	1.66	1.66	1.68	1.75	1.77	1.84	1.79	1.80	1.79	1.82	1.96	1.91	1.82	1.81	
Fabricated metal products	1.68	1.67	1.68	1.68	1.63	1.59	1.66	1.62	1.64	1.69	1.75	1.74	1.76	1.69	1.71	1.76	1.83	1.76	1.73	1.70	
Industrial machinery and equipment	2.41	2.37	2.21	2.18	2.14	2.09	2.07	2.12	2.16	2.18	2.25	2.28	2.24	2.28	2.25	2.23	2.36	2.31	2.29	2.25	
Electronic and other electric equipment	2.15	2.13	2.08	2.06	1.97	1.91	1.83	1.85	1.82	1.83	1.88	1.94	1.90	1.90	1.91	1.91	1.88	1.82	1.78	1.74	
Transportation equipment	1.81	1.89	1.98	1.93	1.91	1.95	1.92	1.87	1.95	2.09	2.11	2.22	2.30	2.17	2.21	2.52	2.68	2.37	2.18	2.24	
Motor vehicles and equipment61	.66	.70	.66	.65	.63	.61	.59	.59	.62	.64	.63	.68	.61	.63	.78	.86	.73	.65	.69	
Other transportation equipment	3.86	3.85	3.89	3.94	3.84	4.09	4.03	4.07	4.44	4.60	4.41	4.84	4.57	4.59	4.52	4.69	4.78	4.51	4.37	4.38	
Other durable goods ¹	1.94	1.96	1.94	1.90	1.85	1.78	1.77	1.80	1.83	1.88	1.90	1.89	1.91	1.85	1.86	1.91	1.96	1.86	1.79	1.83	
Nondurable goods	1.08	1.08	1.09	1.09	1.08	1.08	1.08	1.08	1.06	1.09	1.12	1.12	1.12	1.15	1.13	1.15	1.18	1.15	1.14	1.15	
Food and kindred products83	.85	.86	.84	.83	.83	.81	.84	.81	.82	.86	.87	.86	.88	.90	.89	.90	.88	.90	.91	
Paper and allied products	1.16	1.15	1.12	1.11	1.09	1.08	1.10	1.11	1.07	1.12	1.18	1.19	1.18	1.20	1.19	1.20	1.26	1.23	1.20	1.24	
Chemicals and allied products	1.25	1.19	1.21	1.22	1.24	1.24	1.26	1.25	1.28	1.30	1.32	1.30	1.30	1.32	1.30	1.31	1.38	1.35	1.34	1.35	
Petroleum and coal products72	.70	.73	.83	.82	.80	.81	.77	.71	.79	.81	.79	.85	.93	.87	.92	.99	.94	.91	.89	
Rubber and miscellaneous plastic products	1.29	1.29	1.34	1.28	1.29	1.30	1.31	1.28	1.31	1.30	1.35	1.36	1.32	1.33	1.29	1.35	1.41	1.39	1.32	1.32	
Other nondurable goods ²	1.23	1.21	1.19	1.21	1.22	1.22	1.23	1.22	1.20	1.23	1.27	1.28	1.28	1.26	1.28	1.29	1.31	1.31	1.29	1.28	
Merchant wholesalers	1.26	1.27	1.26	1.29	1.30	1.30	1.30	1.26	1.26	1.29	1.28	1.27	1.28	1.28	1.29	1.32	1.36	1.38	1.34	1.32	1.35
Durable goods	1.73	1.73	1.68	1.73	1.77	1.70	1.73	1.66	1.66	1.70	1.69	1.66	1.63	1.65	1.71	1.75	1.80	1.74	1.69	1.73	
Nondurable goods85	.85	.87	.88	.87	.92	.90	.89	.88	.88	.89	.92	.93	.93	.98	.98	.96	.97	.98	.95	
Groceries and farm products73	.75	.75	.75	.75	.82	.83	.76	.74	.73	.76	.78	.77	.79	.82	.83	.86	.85	.86	.85	
Other nondurable goods91	.91	.93	.96	.95	.98	.96	.97	.98	1.00	1.01	.98	1.02	1.04	1.04	1.07	1.07	1.05	1.05	1.07	
Retail trade	1.39	1.38	1.36	1.41	1.37	1.38	1.39	1.39	1.43	1.43	1.41	1.46	1.41	1.45	1.45	1.47	1.46	1.44	1.46	1.48	
Durable goods	2.10	2.06	1.96	2.10	1.95	1.99	2.06	2.05	2.16	2.10	2.02	2.18	2.04	2.14	2.17	2.20	2.16	2.14	2.18	2.17	
Motor vehicle dealers ³	2.02	1.90	1.74	1.95	1.72	1.80	1.88	1.89	2.07	1.97	1.81	2.09	1.85	1.98	2.02	2.07	2.04	2.00	2.04	2.02	
Other durable goods ³	2.19	2.27	2.24	2.27	2.25	2.22	2.27	2.25	2.28	2.27	2.29	2.29	2.29	2.25	2.33	2.34	2.34	2.29	2.34	2.34	
Nondurable goods	1.01	1.01	1.02	1.03	1.04	1.02	1.02	1.01	1.02	1.04	1.05	1.05	1.05	1.05	1.06	1.07	1.06	1.07	1.11	1.11	
Food stores70	.69	.68	.68	.71	.70	.69	.71	.70	.71	.73	.74	.72	.74	.75	.77	.79	.77	.78	.80	
Other nondurable goods	1.17	1.17	1.18	1.19	1.19	1.18	1.17	1.14	1.16	1.19	1.19	1.19	1.19	1.20	1.18	1.20	1.20	1.19	1.20	1.25	

	1992				1993				1994				1995				1996			
	I	II	III	IV	I	II	III	IV	I	II	III	IV	I	II	III	IV	Mar.	Apr.	May	June
Manufacturing and trade	1.46	1.45	1.44	1.43	1.43	1.43	1.43	1.41	1.39	1.39	1.39	1.38	1.39	1.41	1.41	1.39	1.37	1.38	1.39	1.38
Manufacturing	1.55	1.51	1.51	1.48	1.46	1.48	1.49	1.44	1.43	1.40	1.39	1.38	1.37	1.40	1.40	1.39	1.41	1.41	1.40	1.39
Durable goods	1.92	1.85	1.83	1.77	1.76	1.77	1.78	1.71	1.69	1.67	1.65	1.63	1.61	1.64	1.65	1.63	1.67	1.67	1.67	1.65
Primary metal industries	1.77	1.74	1.76	1.73	1.68	1.69	1.71	1.67	1.66	1.62	1.58	1.54	1.56	1.62	1.62	1.61	1.65	1.63	1.61	1.61
Fabricated metal products	1.74	1.71	1.70	1.66	1.64	1.61	1.64	1.57	1.52	1.52	1.53	1.55	1.52	1.55	1.52	1.49	1.50	1.51	1.51	1.52
Industrial machinery and equipment	2.19	2.10	2.11	2.07	1.98	2.03	2.01	1.96	1.98	1.94	1.89	1.85	1.81	1.79	1.77	1.75	1.94	1.95	1.92	1.92
Electronic and other electric equipment	1.72	1.68	1.63	1.60	1.63	1.61	1.56	1.55	1.53	1.53	1.54	1.55	1.58	1.57	1.58	1.57	1.52	1.50	1.52	1.51
Transportation equipment	2.14	1.98	1.95	1.79	1.80	1.82	1.93	1.74	1.67	1.67	1.63	1.60	1.57	1.63	1.65	1.59	1.66	1.69	1.71	1.64
Motor vehicles and equipment69	.65	.66	.61	.60	.62	.65	.58	.56	.56	.56	.55	.55	.58	.56	.53	.57	.55	.56	.56
Other transportation equipment	4.12	3.96	3.94	3.64	3.87	3.92	4.23	4.09	4.03	4.18	4.06	4.05	3.91	3.91	4.15	4.04	3.82	4.25	4.36	4.03
Other durable goods ¹	1.79	1.75	1.73	1.67	1.65	1.65	1.68	1.59	1.56	1.53	1.50	1.47	1.42	1.44	1.45	1.43	1.55	1.54	1.53	1.51
Nondurable goods	1.15	1.15	1.17	1.17	1.14	1.16	1.16	1.15	1.14	1.11	1.11	1.09	1.10	1.12	1.12	1.11	1.12	1.13	1.12	1.11
Food and kindred products91	.91	.93	.92	.92	.93	.91	.90	.89	.91	.91	.88	.90	.89	.88	.87	.88	.92	.91	.89
Paper and allied products	1.24	1.25	1.25	1.24	1.23	1.22	1.22	1.22	1.22	1.20	1.17	1.14	1.14	1.19	1.24	1.26	1.21	1.21	1.20	1.20
Chemicals and allied products	1.36	1.34	1.37	1.39	1.36	1.39	1.35	1.33	1.28	1.25	1.25	1.25	1.25	1.30	1.29	1.28	1.29	1.28	1.28	1.28
Petroleum and coal products90	.86	.88	.90	.82	.86	.85	.89	.88	.79	.85	.88	.81	.86	.87	.84	.88	.85	.83	.79
Rubber and miscellaneous plastic products	1.27	1.27	1.26	1.29	1.23	1.26	1.26	1.24	1.24	1.19	1.21	1.19	1.21	1.24	1.24	1.22	1.21	1.20	1.18	1.19
Other nondurable goods ²	1.32	1.29	1.30	1.29	1.30	1.36	1.35	1.32	1.28	1.25	1.22	1.23	1.23	1.24	1.25	1.25	1.28	1.26	1.23	1.25
Merchant wholesalers	1.33	1.35	1.33	1.35	1.33	1.33	1.33	1.34	1.30	1.32	1.32	1.32	1.34	1.36	1.37	1.34	1.28	1.30	1.32	1.31
Durable goods	1.70	1.72	1.69	1.67	1.64	1.63	1.61	1.61	1.58	1.61	1.59	1.58	1.62	1.65	1.65	1.62	1.56	1.58	1.61	1.59
Nondurable goods99	1.00	.98	1.02	1.03	1.04	1.04	1.02	1.02	1.03	1.03	1.03	1.04	1.05	1.06	1.03	1.00	1.01	1.03	1.01
Groceries and farm products85	.86	.82	.86	.87	.90	.89	.92	.92	.90	.89	.90	.89	.90	.94	.89	.91	.90	.90	.89
Other nondurable goods	1.09	1.11	1.08	1.13	1.12															

Table 3.—Real Inventory-Sales Ratios for Manufacturing and Trade, Seasonally Adjusted—Continued

[Ratio, based on chained (1992) dollars]

	1994						1995												1996		
	July	Aug.	Sep.	Oct.	Nov.	Dec.	Jan.	Feb.	Mar.	Apr.	May	June	July	Aug.	Sep.	Oct.	Nov.	Dec.	Jan. [/]	Feb. [/]	
Manufacturing and trade	1.40	1.37	1.38	1.38	1.38	1.37	1.38	1.39	1.39	1.41	1.40	1.39	1.42	1.39	1.40	1.40	1.39	1.38	1.38	1.38	1.38
Manufacturing	1.42	1.38	1.39	1.40	1.37	1.36	1.36	1.37	1.37	1.40	1.40	1.39	1.43	1.38	1.38	1.39	1.39	1.38	1.39	1.38	1.39
Durable goods	1.69	1.62	1.64	1.65	1.62	1.61	1.61	1.62	1.61	1.65	1.64	1.63	1.70	1.61	1.61	1.63	1.63	1.61	1.61	1.62	1.62
Primary metal industries	1.62	1.56	1.56	1.57	1.56	1.49	1.53	1.57	1.56	1.62	1.59	1.61	1.65	1.61	1.60	1.59	1.61	1.62	1.64	1.64	1.64
Fabricated metal products	1.55	1.52	1.53	1.55	1.51	1.57	1.47	1.52	1.55	1.55	1.56	1.55	1.51	1.51	1.50	1.51	1.50	1.51	1.50	1.51	1.51
Industrial machinery and equipment	1.90	1.86	1.88	1.84	1.86	1.83	1.85	1.81	1.79	1.80	1.78	1.77	1.83	1.75	1.72	1.74	1.76	1.72	1.72	1.72	1.72
Electronic and other electric equipment	1.51	1.51	1.53	1.54	1.51	1.53	1.55	1.59	1.55	1.59	1.55	1.51	1.59	1.53	1.54	1.58	1.55	1.54	1.57	1.57	1.57
Transportation equipment	1.78	1.57	1.62	1.67	1.56	1.58	1.57	1.56	1.57	1.63	1.67	1.62	1.78	1.61	1.57	1.62	1.59	1.58	1.60	1.60	1.60
Motor vehicles and equipment62	.52	.55	.57	.53	.53	.54	.54	.55	.59	.59	.58	.65	.54	.52	.53	.54	.54	.54	.54	.54
Other transportation equipment	4.27	4.00	4.07	4.16	3.89	4.18	3.92	3.91	3.92	3.88	4.02	3.89	4.11	4.11	4.36	3.94	3.93	4.30	4.30	4.30	4.30
Other durable goods ¹	1.54	1.46	1.49	1.50	1.45	1.45	1.43	1.44	1.42	1.46	1.44	1.43	1.50	1.42	1.41	1.43	1.43	1.42	1.43	1.43	1.43
Nondurable goods	1.12	1.11	1.11	1.11	1.09	1.07	1.09	1.09	1.10	1.12	1.12	1.12	1.13	1.11	1.12	1.11	1.10	1.10	1.11	1.11	1.11
Food and kindred products91	.91	.91	.91	.89	.86	.89	.90	.91	.89	.89	.89	.87	.87	.87	.87	.87	.87	.87	.89	.89
Paper and allied products	1.19	1.17	1.17	1.16	1.15	1.15	1.14	1.14	1.16	1.17	1.17	1.19	1.23	1.22	1.24	1.25	1.25	1.25	1.28	1.28	1.28
Chemicals and allied products	1.30	1.26	1.24	1.26	1.24	1.24	1.25	1.26	1.26	1.30	1.30	1.29	1.28	1.28	1.30	1.27	1.28	1.27	1.26	1.26	1.26
Petroleum and coal products82	.85	.87	.88	.87	.82	.85	.81	.82	.83	.85	.88	.86	.85	.86	.86	.81	.81	.81	.80	.80
Rubber and miscellaneous plastic products	1.21	1.18	1.20	1.21	1.17	1.17	1.19	1.22	1.21	1.24	1.23	1.25	1.28	1.22	1.22	1.23	1.23	1.22	1.21	1.21	1.21
Other nondurable goods ²	1.24	1.21	1.22	1.24	1.24	1.22	1.21	1.23	1.24	1.23	1.25	1.24	1.25	1.25	1.26	1.26	1.25	1.24	1.26	1.26	1.26
Merchant wholesalers	1.32	1.30	1.31	1.30	1.32	1.31	1.32	1.32	1.35	1.37	1.36	1.35	1.37	1.36	1.36	1.36	1.36	1.34	1.33	1.34	1.34
Durable goods	1.61	1.56	1.58	1.58	1.58	1.57	1.59	1.60	1.63	1.66	1.63	1.63	1.67	1.65	1.63	1.63	1.62	1.58	1.62	1.62	1.62
Nondurable goods	1.02	1.01	1.02	1.01	1.03	1.04	1.04	1.02	1.05	1.05	1.06	1.04	1.06	1.05	1.07	1.06	1.04	1.03	1.04	1.04	1.04
Groceries and farm products86	.84	.89	.86	.88	.92	.90	.88	.91	.89	.89	.89	.94	.92	.94	.92	.91	.90	.99	.99	.99
Other nondurable goods	1.17	1.16	1.16	1.15	1.17	1.17	1.17	1.17	1.20	1.22	1.22	1.19	1.20	1.19	1.21	1.19	1.18	1.18	1.19	1.19	1.19
Retail trade	1.43	1.43	1.43	1.43	1.43	1.43	1.44	1.46	1.45	1.46	1.45	1.44	1.44	1.44	1.44	1.46	1.44	1.42	1.40	1.40	1.40
Durable goods	1.93	1.92	1.91	1.88	1.89	1.91	1.95	1.98	1.98	2.01	1.98	1.94	1.95	1.92	1.94	1.95	1.93	1.88	1.83	1.83	1.83
Motor vehicle dealers ³	1.76	1.76	1.74	1.69	1.70	1.74	1.79	1.83	1.84	1.87	1.82	1.77	1.78	1.71	1.74	1.76	1.74	1.70	1.82	1.82	1.82
Other durable goods ³	2.13	2.11	2.10	2.12	2.11	2.10	2.12	2.14	2.13	2.17	2.15	2.15	2.14	2.17	2.18	2.18	2.14	2.10	2.11	2.11	2.11
Nondurable goods	1.12	1.12	1.13	1.13	1.13	1.13	1.12	1.13	1.12	1.12	1.12	1.12	1.12	1.13	1.12	1.13	1.12	1.11	1.11	1.11	1.11
Food stores81	.81	.82	.82	.81	.82	.80	.81	.81	.81	.81	.82	.82	.83	.83	.82	.82	.81	.81	.81	.81
Other nondurable goods	1.24	1.24	1.25	1.26	1.26	1.25	1.25	1.26	1.25	1.24	1.24	1.23	1.23	1.24	1.23	1.26	1.25	1.23	1.23	1.23	1.23

[/] Preliminary.

1. Includes lumber and wood products; furniture and fixtures; stone, clay, and glass products; instruments and related products; and miscellaneous manufacturing industries.

2. Includes tobacco manufacturers; textile mill products; apparel products; printing and publishing; and leather and leather products.

3. Prior to 1981, inventories and sales of auto and home supply stores are included in motor vehicle dealers. Beginning with 1981, these inventories are included in "other durable goods".

NOTE.—Manufacturing inventories are classified by the type of product produced by the establishment holding the inventory. Trade inventories are classified by the type of product sold by the establishment holding the inventory.

Table 4.—Real Manufacturing Inventories by Stage of Fabrication, Seasonally Adjusted, End of Period
 [Billions of chained (1992) dollars]

	1977				1978				1979				1980				1981				
	I	II	III	IV	I	II	III	IV	I	II	III	IV	I	II	III	IV	I	II	III	IV	
Materials and supplies																					
Manufacturing	109.1	112.0	112.6	111.1	110.5	112.3	114.6	115.2	116.9	116.9	118.1	119.4	121.3	121.4	118.8	118.7	119.7	119.2	120.2	119.3	
Durable goods	63.6	65.4	65.4	64.7	64.2	65.6	67.9	68.1	69.6	70.2	70.9	72.4	73.2	72.9	71.3	71.3	72.2	71.8	72.6	71.6	
Primary metal industries	11.8	11.8	11.6	11.1	10.3	10.4	10.5	10.5	10.3	10.3	10.5	10.7	10.9	11.1	10.6	10.3	10.7	10.3	10.6	10.8	
Fabricated metal products	9.7	10.2	10.1	9.8	9.8	10.0	10.2	10.3	10.5	10.6	10.6	10.5	10.5	10.2	9.7	9.8	9.8	9.6	9.8	9.5	
Metal machinery and equipment	9.4	9.4	9.5	9.7	9.8	10.2	10.5	10.6	10.8	11.0	11.2	11.7	12.0	12.1	12.2	12.1	11.9	12.2	12.4	12.5	
Electronic and other electric equipment	8.0	8.1	8.3	8.3	8.4	8.8	9.2	9.3	9.7	10.1	9.9	10.3	10.5	10.5	10.6	10.6	10.7	10.9	11.0	10.8	
Motor vehicles and equipment	7.1	7.3	7.7	7.6	7.4	7.6	8.2	7.8	8.8	8.3	8.7	8.1	7.6	6.9	6.0	6.5	6.7	6.3	6.1	5.6	
Other transportation equipment	3.3	4.1	3.9	3.7	3.9	3.8	4.2	4.4	4.3	4.4	4.6	5.3	5.7	6.0	6.1	6.2	6.5	6.5	6.4	6.4	
Other durable goods ¹	14.1	14.4	14.2	14.4	14.4	14.6	15.0	15.0	15.2	15.4	15.3	15.5	15.7	15.7	15.6	15.7	15.8	15.8	15.8	15.5	
Nondurable goods	45.7	46.8	47.4	46.6	46.5	46.8	46.8	47.2	47.4	46.8	47.2	47.0	48.2	48.5	47.6	47.5	47.6	47.4	47.6	47.7	
Food and kindred products	9.9	10.3	10.5	9.4	9.3	9.3	9.2	9.2	9.2	9.0	9.1	9.5	9.5	9.6	9.4	9.4	9.2	9.2	9.5	9.3	
Paper and allied products	4.4	4.5	4.5	4.5	4.5	4.5	4.6	4.6	4.7	4.8	4.8	4.9	5.0	5.3	5.1	5.0	5.1	5.1	5.2	5.1	
Chemicals and allied products	8.2	8.4	8.7	8.9	8.9	9.2	9.4	9.5	9.6	9.6	9.5	9.5	10.2	9.9	9.6	9.9	9.7	9.7	9.7	9.6	
Petroleum and coal products	3.0	3.0	3.0	3.1	3.2	3.2	3.2	3.2	3.2	3.0	3.2	3.0	2.9	3.0	3.2	3.1	3.2	3.2	3.0	3.2	
Rubber and miscellaneous plastic products	3.4	3.4	3.4	3.5	3.5	3.5	3.7	3.7	3.8	3.8	3.9	3.7	3.8	3.7	3.5	3.6	3.7	3.7	3.7	3.7	
Other nondurable goods ²	14.1	14.4	14.2	14.4	14.4	14.6	15.0	15.0	15.2	15.4	15.3	15.5	15.7	15.7	15.6	15.6	15.7	15.8	15.8	15.5	
Work-in-process																					
Manufacturing	102.9	101.6	104.2	105.8	107.6	109.6	110.6	113.3	114.2	117.3	119.0	120.9	122.0	122.0	120.9	121.0	122.1	120.9	120.9	119.3	
Durable goods	85.4	84.0	86.2	87.5	89.4	91.3	92.1	94.5	95.4	98.1	99.4	101.7	102.2	102.4	101.5	101.3	102.4	101.6	101.8	100.2	
Primary metals	8.8	8.7	8.8	8.7	8.6	8.8	9.2	9.5	9.0	9.3	9.5	9.5	9.1	8.7	8.9	9.1	9.7	9.5	9.7	9.7	
Fabricated metals	7.8	7.7	8.3	8.4	9.1	9.1	9.0	8.9	8.9	9.2	8.9	8.9	8.9	8.7	8.6	8.8	8.5	8.3	8.1	8.0	
Machinery, except electrical	16.4	16.3	16.4	16.7	17.1	17.4	17.7	18.2	18.5	18.8	19.2	19.7	20.1	20.2	20.3	20.2	20.3	19.9	20.2	19.9	
Electrical machinery	8.2	8.6	8.9	9.3	9.7	9.9	10.2	10.5	11.1	11.5	12.2	12.6	12.6	12.4	12.4	12.5	12.8	13.1	13.3	13.0	
Motor vehicles	6.2	6.5	6.4	6.6	6.7	6.8	6.8	7.0	7.1	7.0	6.5	6.1	5.8	5.4	5.7	5.2	4.9	4.8	4.7	4.4	
Other transportation equipment	24.5	22.4	23.3	23.3	23.5	24.3	23.9	24.8	24.9	26.4	27.2	28.8	29.5	29.6	29.4	29.2	29.7	29.7	29.2	28.5	
Other durable goods ¹	12.8	12.7	13.2	13.4	13.6	13.7	13.9	14.1	14.3	14.3	14.1	14.2	14.5	14.5	14.3	14.3	14.5	14.4	14.5	14.4	
Nondurable goods	17.6	17.7	18.1	18.4	18.3	18.4	18.5	18.8	18.9	19.2	19.5	19.2	19.8	19.6	19.4	19.7	19.6	19.3	19.1	19.1	
Food and kindred products	3.1	3.1	3.1	3.1	3.0	3.1	3.2	3.4	3.3	3.5	3.7	3.6	3.7	3.6	3.5	3.4	3.5	3.5	3.4	3.4	
Paper and allied products9	.9	.9	.9	.8	.9	.9	.9	.9	.9	.9	.9	1.0	1.0	1.0	1.0	1.0	1.0	1.0	1.0	
Chemicals and allied products	3.9	3.9	3.9	4.0	4.0	4.0	4.1	4.3	4.3	4.2	4.4	4.1	4.4	4.4	4.4	4.5	4.7	4.5	4.4	4.3	
Petroleum and coal products	1.6	1.8	1.9	2.0	1.9	1.8	1.7	1.8	1.9	2.0	2.0	2.1	2.1	2.2	2.2	2.3	2.1	2.0	1.9	2.0	
Rubber and plastic products	1.5	1.5	1.5	1.6	1.6	1.6	1.6	1.6	1.6	1.7	1.6	1.6	1.6	1.5	1.5	1.6	1.6	1.6	1.6	1.6	
Other nondurable goods ²	6.5	6.5	6.7	6.9	7.0	7.1	7.0	6.9	6.9	6.9	6.9	6.8	6.8	6.7	6.6	6.8	6.7	6.7	6.8	6.7	
Finished goods																					
Manufacturing	92.2	93.1	93.7	94.9	95.0	95.7	96.1	97.3	97.6	98.2	97.9	98.0	100.0	101.4	99.6	98.9	100.5	102.1	103.8	104.7	
Durable goods	46.4	46.5	46.2	46.9	47.4	47.8	47.9	48.9	50.4	51.0	50.9	50.8	51.5	52.2	51.7	52.2	52.4	52.8	54.2	54.9	
Primary metals	7.2	7.4	7.4	7.4	7.2	7.4	7.3	7.2	6.9	7.1	7.0	7.1	7.1	6.9	6.8	7.0	7.2	7.4	7.9	8.1	
Fabricated metals	6.0	5.7	5.9	6.1	6.0	6.1	6.1	6.3	6.6	6.5	6.6	6.6	6.8	6.6	6.6	6.6	6.6	6.7	6.9	6.8	
Machinery, except electrical	10.8	10.9	10.6	10.9	11.0	11.1	11.1	11.6	12.0	12.3	12.5	12.3	12.4	13.1	13.1	13.1	13.3	13.3	13.5	13.8	
Electrical machinery	5.2	5.3	5.2	5.4	5.5	5.8	5.9	5.7	5.6	5.3	5.5	6.0	6.3	6.4	6.1	6.0	6.2	6.2	6.5	6.5	
Motor vehicles	2.1	2.3	2.4	2.3	2.4	2.2	2.1	2.2	2.7	2.8	2.6	2.4	2.3	2.3	2.1	2.1	2.0	1.9	1.9	1.9	
Other transportation equipment	2.8	2.8	2.8	2.8	2.9	2.8	2.9	2.9	3.4	3.6	3.6	3.4	3.5	3.6	3.9	3.9	3.9	3.9	4.0	4.3	
Other durable goods ¹	12.2	12.3	12.1	12.2	12.6	12.5	12.5	12.9	13.3	13.5	13.1	13.0	13.1	13.1	12.9	13.2	13.1	13.2	13.5	13.3	
Nondurable goods	46.0	46.8	47.8	48.3	47.8	48.1	48.4	48.6	47.3	47.2	47.0	47.3	48.5	49.2	47.9	46.7	48.1	49.3	49.5	49.8	
Food and kindred products	13.1	13.2	13.4	13.4	13.2	13.2	13.3	13.5	13.8	14.1	13.8	13.4	13.5	13.4	13.5	13.2	13.6	14.0	13.9	13.8	
Paper and allied products	3.0	3.0	3.1	3.2	3.2	3.3	3.3	3.2	3.1	3.1	3.0	3.1	3.2	3.3	3.3	3.3	3.3	3.3	3.3	3.5	
Chemicals and allied products	11.5	11.7	12.2	12.4	12.6	12.5	12.5	12.5	11.5	11.2	11.4	11.8	11.9	12.5	11.7	11.6	11.8	12.4	12.7	13.0	
Petroleum and coal products	4.3	4.7	4.7	4.8	4.3	4.2	4.2	4.3	3.7	3.6	3.9	4.3	4.7	5.0	4.8	4.4	4.8	5.0	4.9	4.6	
Rubber and plastic products	4.4	4.5	4.6	4.6	4.6	4.7	4.7	4.8	4.8	4.8	4.9	4.7	4.7	4.5	4.4	4.3	4.4	4.4	4.6	4.5	
Other nondurable goods ²	9.7	9.7	9.7	10.0	9.9	10.2	10.5	10.4	10.7	10.6	10.2	9.9	10.1	10.1	9.9	9.8	9.9	9.8	9.9	10.3	

See footnotes at end of table.

Table 4.—Real Manufacturing Inventories by Stage of Fabrication, Seasonally Adjusted, End of Period—Continued

[Billions of chained (1992) dollars]

	1982				1983				1984				1985				1986			
	I	II	III	IV	I	II	III	IV	I	II	III	IV	I	II	III	IV	I	II	III	IV
Materials and supplies																				
Manufacturing	117.8	116.9	115.2	113.6	110.5	111.5	112.5	114.5	116.3	118.6	122.2	121.3	120.0	119.8	118.2	118.5	117.0	117.8	116.9	117.3
Durable goods	69.9	68.7	67.3	65.9	63.2	63.8	64.7	66.4	67.8	69.6	72.4	72.3	71.4	71.1	70.5	70.5	68.9	69.2	68.8	69.1
Primary metal industries	10.8	10.4	9.7	9.2	8.6	8.4	8.1	8.4	8.3	8.4	8.8	8.3	7.7	7.6	7.5	7.1	6.8	6.8	6.5	6.6
Fabricated metal products	9.1	8.8	8.7	8.4	8.2	8.3	8.5	8.5	8.7	8.9	9.0	9.0	8.8	8.6	8.6	8.7	8.8	9.0	8.6	8.6
Industrial machinery and equipment	12.4	12.3	12.0	11.9	11.6	11.7	11.5	11.6	11.8	12.0	12.9	12.6	12.6	12.7	12.3	12.1	11.5	11.8	11.7	11.6
Electronic and other electric equipment	10.4	10.2	10.0	10.0	9.8	9.9	10.1	10.5	10.7	11.2	11.7	12.0	12.1	11.8	11.6	11.5	11.4	11.5	11.4	11.1
Motor vehicles and electric equipment	5.1	5.0	4.8	4.8	4.6	4.8	5.0	5.4	5.8	5.9	6.1	6.3	6.2	6.3	6.3	6.5	6.1	6.0	6.0	5.8
Other transportation equipment	6.2	6.4	6.6	6.6	5.8	6.2	6.3	6.5	7.1	7.0	7.1	7.3	6.9	7.2	7.4	7.8	7.8	8.0	8.4	8.8
Other durable goods ¹	15.3	15.2	15.0	14.6	14.1	14.2	14.8	15.1	15.2	16.0	16.6	16.6	16.9	16.7	16.6	16.7	16.5	16.4	16.3	16.6
Nondurable goods	48.0	48.2	47.9	47.7	47.2	47.6	47.8	48.1	48.5	49.0	49.8	49.0	48.6	48.7	47.7	48.0	48.1	48.5	48.1	48.3
Food and kindred products	9.1	9.3	9.2	9.3	9.4	9.0	9.4	9.2	9.1	8.9	8.9	9.1	9.1	9.3	9.3	9.3	9.0	9.2	9.3	9.4
Paper and allied products	5.1	5.0	5.0	5.1	5.0	5.1	5.2	5.3	5.5	5.7	5.8	5.8	5.7	5.7	5.5	5.7	6.0	5.9	6.0	6.0
Chemicals and allied products	9.4	9.3	9.3	8.9	8.9	8.8	9.0	9.3	9.5	9.7	9.7	9.6	9.7	9.8	9.6	9.6	9.3	9.9	10.1	10.1
Petroleum and coal products	3.6	3.6	3.6	3.6	3.8	3.9	3.4	3.3	3.4	3.4	3.6	3.3	3.3	3.2	2.9	3.1	3.7	3.8	3.5	3.1
Rubber and miscellaneous plastic products	3.4	3.3	3.3	3.3	3.3	3.5	3.5	3.7	3.9	3.9	4.0	3.9	3.8	3.9	3.8	3.9	4.0	3.9	4.0	3.9
Other nondurable goods ²	15.3	15.2	15.0	14.6	14.1	14.2	14.8	15.1	15.2	16.0	16.6	16.6	16.9	16.7	16.6	16.7	16.5	16.4	16.3	16.6
Work-in-process																				
Manufacturing	116.9	116.8	115.5	114.0	111.7	111.9	112.1	113.9	117.0	121.6	124.7	127.0	126.6	126.8	128.2	126.6	127.3	126.8	124.7	123.4
Durable goods	97.8	97.6	96.4	95.5	92.8	92.8	92.6	94.6	97.2	101.4	104.6	107.0	107.0	107.5	108.7	106.7	107.5	106.3	104.8	103.3
Primary metals	9.4	8.9	8.8	8.3	7.8	7.7	7.8	8.0	8.1	8.6	8.4	8.2	8.1	7.7	7.4	7.2	7.1	7.0	6.9	7.0
Fabricated metals	8.0	7.8	7.6	7.0	6.9	7.1	7.2	7.1	7.3	7.5	7.6	7.6	7.5	7.3	7.4	7.7	7.5	7.7	7.8	7.7
Machinery, except electrical	19.0	18.9	18.3	17.6	17.2	17.0	16.8	17.0	17.4	18.2	18.2	18.9	18.9	18.6	19.1	18.9	18.9	18.5	18.1	17.8
Electrical machinery	12.8	12.9	12.6	12.6	12.4	12.7	12.6	13.3	13.4	13.7	14.3	14.4	14.2	14.3	14.1	13.5	13.3	13.1	12.9	12.5
Motor vehicles	4.6	4.6	4.4	4.0	4.2	4.3	4.5	4.7	4.7	4.7	4.8	4.8	4.6	4.7	4.5	4.3	4.5	4.4	4.1	4.3
Other transportation equipment	27.7	28.6	29.2	31.1	29.4	28.8	28.3	28.6	30.0	31.9	34.0	34.8	34.9	35.6	36.1	35.4	36.4	35.6	34.6	33.2
Other durable goods ¹	14.2	14.1	14.1	13.8	13.7	14.1	14.1	14.6	15.1	15.6	16.3	17.3	17.9	18.6	19.2	18.9	19.2	19.3	19.9	20.1
Nondurable goods	19.1	19.2	19.0	18.5	18.9	19.0	19.4	19.3	19.7	20.2	20.1	20.0	19.5	19.3	19.5	19.9	19.8	20.5	20.0	20.1
Food and kindred products	3.2	3.2	3.3	3.4	3.4	3.3	3.2	3.3	3.2	3.3	3.4	3.4	3.3	3.2	3.2	3.2	3.2	3.2	3.2	3.2
Paper and allied products	1.0	1.0	1.1	1.0	1.0	1.1	1.0	1.1	1.1	1.1	1.2	1.2	1.3	1.2	1.2	1.2	1.2	1.2	1.3	1.3
Chemicals and allied products	4.3	4.4	4.3	4.1	4.2	4.1	4.2	4.3	4.3	4.8	4.9	4.6	4.7	4.7	4.8	4.7	4.5	4.6	4.6	4.7
Petroleum and coal products	2.4	2.2	2.3	2.1	2.3	2.2	2.3	2.1	2.1	2.1	2.0	2.0	1.8	1.8	1.7	2.0	2.2	2.7	2.3	2.1
Rubber and plastic products	1.6	1.7	1.6	1.5	1.4	1.5	1.6	1.6	1.7	1.9	1.7	1.7	1.7	1.7	1.7	1.7	1.7	1.6	1.6	1.7
Other nondurable goods ²	6.3	6.4	6.4	6.2	6.4	6.6	6.9	6.9	7.2	7.0	7.0	7.1	6.9	6.7	7.0	7.1	7.0	7.2	6.9	7.2
Finished goods																				
Manufacturing	105.4	102.7	104.1	101.8	99.4	99.6	100.5	100.9	102.4	106.2	109.4	110.0	110.1	110.2	109.3	108.7	109.8	110.5	108.9	109.0
Durable goods	55.2	55.6	56.2	53.6	51.9	52.2	51.9	52.3	52.8	54.4	56.2	57.5	57.7	58.0	56.8	56.0	55.8	55.7	55.5	55.9
Primary metals	8.0	7.6	7.5	7.2	6.8	7.1	6.7	6.4	6.6	6.7	6.8	6.9	6.5	6.5	6.5	6.5	6.3	6.3	5.7	5.8
Fabricated metals	6.8	7.1	7.2	6.6	6.4	6.5	6.5	6.6	6.7	6.6	6.7	7.0	7.0	6.9	6.8	6.9	6.9	6.8	7.0	7.0
Machinery, except electrical	14.4	14.6	14.6	13.9	13.2	13.1	13.1	12.9	12.6	12.9	13.3	13.8	14.0	14.2	13.4	12.9	13.3	12.7	12.8	12.6
Electrical machinery	6.5	6.5	6.7	6.4	6.1	6.2	6.3	6.6	6.7	7.0	7.4	7.7	7.7	7.9	7.6	7.4	7.2	7.5	7.7	7.6
Motor vehicles	1.8	1.8	1.9	1.9	1.8	1.8	1.8	2.0	2.0	2.2	2.4	2.3	2.4	2.4	2.5	2.4	2.3	2.3	2.3	2.4
Other transportation equipment	4.5	4.5	4.6	4.5	4.5	4.3	4.0	4.2	4.0	4.3	4.4	4.2	4.5	4.3	4.4	4.2	4.1	4.0	4.1	4.2
Other durable goods ¹	12.9	13.3	13.4	12.9	12.9	13.0	13.2	13.4	14.2	14.6	15.1	15.5	15.6	15.6	15.4	15.6	15.6	16.0	16.0	16.2
Nondurable goods	50.2	47.1	47.9	48.2	47.5	47.4	48.5	48.5	49.6	51.8	53.2	52.5	52.3	52.1	52.4	52.8	54.0	54.8	53.4	53.1
Food and kindred products	13.4	12.6	13.5	13.5	13.2	13.1	12.9	13.0	13.2	13.5	13.3	13.2	13.3	13.2	13.6	13.6	13.3	13.2	13.0	13.3
Paper and allied products	3.7	3.8	3.8	3.7	3.7	3.7	3.6	3.6	3.7	3.9	4.0	4.3	4.2	4.2	4.2	4.2	4.2	4.2	4.2	4.2
Chemicals and allied products	13.2	12.5	12.1	12.0	11.9	12.2	12.4	12.3	12.9	13.4	14.3	13.9	13.3	13.7	14.1	13.8	14.2	14.0	13.4	14.0
Petroleum and coal products	4.9	4.0	4.3	4.7	4.6	4.2	4.8	4.6	4.7	4.9	5.0	4.9	5.0	4.8	4.2	4.5	5.2	6.0	5.3	4.7
Rubber and plastic products	4.5	4.5	4.3	4.3	4.3	4.2	4.3	4.2	4.2	4.5	4.5	4.6	4.7	4.6	4.8	4.8	4.8	4.8	4.9	4.7
Other nondurable goods ²	10.3	10.0	9.9	9.8	9.7	10.1	10.3	10.7	10.9	11.7	12.0	11.9	11.6	11.6	12.0	12.5	12.4	12.8	12.2	12.2

See footnotes at end of table.

Table 4.—Real Manufacturing Inventories by Stage of Fabrication, Seasonally Adjusted, End of Period—Continued

[Billions of chained (1992) dollars]

	1987				1988				1989				1990				1991			
	I	II	III	IV	I	II	III	IV	I	II	III	IV	I	II	III	IV	I	II	III	IV
Materials and supplies																				
Manufacturing	117.0	118.4	118.2	118.4	119.5	120.2	121.3	120.7	121.9	122.4	123.9	124.4	124.7	124.8	124.8	126.0	126.7	124.4	124.4	124.8
Durable goods	68.8	69.6	68.8	68.9	69.3	69.9	70.9	70.5	72.3	72.4	73.1	73.2	72.8	72.8	72.3	73.7	73.5	71.3	71.3	71.1
Primary metal industries	6.5	6.3	6.3	6.4	6.8	6.8	6.8	6.9	6.8	7.0	7.1	7.0	7.0	6.9	6.8	6.9	6.9	6.8	6.8	6.7
Fabricated metal products	8.5	8.6	8.6	8.7	8.7	8.8	8.8	8.8	9.1	8.9	9.1	8.8	8.9	8.8	8.8	8.7	8.8	8.4	8.4	8.3
Industrial machinery and equipment	11.5	11.8	11.6	11.9	12.0	12.2	12.8	12.6	13.3	13.3	13.6	13.5	13.6	13.7	13.6	13.8	13.9	13.6	13.4	13.2
Electronic and other electric equipment	11.1	11.2	11.0	10.9	10.6	10.5	10.4	10.3	10.4	10.4	10.7	10.9	10.9	10.8	10.7	10.6	10.4	10.4	10.4	10.4
Motor vehicles and equipment	5.9	5.8	5.8	5.8	5.7	5.7	5.7	5.6	5.6	5.6	5.5	5.4	5.5	5.6	5.5	5.7	5.7	5.7	5.7	5.8
Other transportation equipment	8.9	8.8	8.6	8.2	8.3	8.9	9.2	8.7	9.1	9.1	8.9	9.5	8.8	9.0	8.9	10.2	9.9	9.1	9.0	8.9
Other durable goods ¹	16.6	17.1	16.9	17.0	17.1	17.0	17.1	17.5	17.9	18.1	18.2	18.0	18.1	18.0	17.9	17.9	17.9	17.4	17.5	17.8
Nondurable goods	48.1	48.8	49.5	49.5	50.2	50.3	50.5	50.2	49.6	50.0	50.9	51.3	51.9	52.0	52.5	52.3	53.3	53.1	53.1	53.6
Food and kindred products	9.5	9.7	10.0	9.7	9.8	9.9	9.7	9.6	9.5	9.3	9.5	9.7	9.7	9.7	10.0	10.1	10.2	10.4	10.6	10.5
Paper and allied products	6.2	6.2	6.3	6.3	6.2	6.3	6.4	6.4	6.2	6.3	6.5	6.6	6.6	6.6	6.7	6.6	6.7	6.7	6.7	7.0
Chemicals and allied products	9.9	9.7	10.0	10.1	10.4	10.5	10.4	10.5	10.6	10.8	11.0	11.1	11.1	11.1	11.4	11.4	11.5	11.6	11.5	11.5
Petroleum and coal products	2.7	2.7	2.9	3.1	3.4	3.2	3.3	3.1	2.9	3.0	3.0	3.1	3.4	3.5	3.3	3.3	3.3	3.7	3.6	3.5
Rubber and miscellaneous plastic products	4.0	4.1	4.1	4.2	4.2	4.3	4.4	4.4	4.5	4.5	4.6	4.6	4.6	4.6	4.6	4.8	4.7	4.7	4.7	4.7
Other nondurable goods ²	16.6	17.1	16.9	17.0	17.1	17.0	17.1	17.5	17.9	18.1	18.2	18.0	18.1	18.0	17.9	17.9	17.8	17.4	17.5	17.8
Work-in-process																				
Manufacturing	123.0	123.4	125.3	126.6	126.6	127.1	125.8	129.6	132.2	135.6	136.8	138.4	139.6	140.0	142.1	139.9	138.6	138.1	136.5	134.3
Durable goods	102.6	102.9	105.0	106.0	105.9	106.4	105.2	108.7	111.3	114.5	115.3	116.9	118.0	118.3	120.1	118.2	116.9	115.8	114.1	112.1
Primary metals	6.9	7.1	7.2	7.4	7.4	7.4	7.6	7.7	7.7	8.0	7.8	7.8	7.6	7.6	7.8	7.8	7.9	8.0	7.8	7.5
Fabricated metals	8.0	7.8	7.8	7.7	7.6	7.5	7.7	7.7	7.7	7.7	7.8	7.9	8.0	7.7	7.6	7.8	7.4	7.5	7.6	7.5
Machinery, except electrical	17.4	17.6	17.5	17.0	17.0	17.2	17.1	17.3	17.8	18.8	18.8	19.3	19.0	18.6	18.9	18.7	18.8	19.0	18.2	18.5
Electrical machinery	12.7	12.9	13.0	13.2	12.9	12.6	12.4	12.4	12.5	12.6	12.6	12.6	12.6	12.5	12.5	12.4	12.2	12.1	11.7	11.6
Motor vehicles	4.2	4.2	4.3	4.4	4.3	4.4	4.1	4.5	4.4	4.4	4.4	4.2	4.1	4.2	4.4	4.4	4.3	4.2	4.2	4.0
Other transportation equipment	33.0	33.0	34.5	35.5	36.2	37.4	36.7	38.8	40.2	42.1	43.3	45.4	47.0	48.1	49.3	48.2	48.1	47.0	46.7	45.3
Other durable goods ¹	19.9	19.7	20.1	20.5	20.2	19.6	19.1	20.1	20.4	20.6	20.4	19.6	19.8	19.6	19.5	18.9	18.1	18.1	17.9	17.6
Nondurable goods	20.4	20.5	20.3	20.6	20.7	20.7	20.6	20.9	20.9	21.1	21.5	21.5	21.6	21.8	22.0	21.7	21.7	22.3	22.4	22.2
Food and kindred products	3.2	3.4	3.4	3.4	3.3	3.5	3.6	3.5	3.5	3.5	3.6	3.7	3.7	3.7	3.7	3.8	3.8	3.8	4.0	4.0
Paper and allied products	1.3	1.3	1.3	1.2	1.2	1.2	1.3	1.3	1.3	1.3	1.3	1.3	1.3	1.3	1.3	1.3	1.3	1.3	1.3	1.3
Chemicals and allied products	4.7	4.8	4.7	4.7	5.0	4.8	4.8	4.9	4.9	4.9	5.1	5.1	5.1	5.2	5.1	5.2	5.2	5.3	5.3	5.4
Petroleum and coal products	1.9	1.8	1.8	2.1	2.1	2.0	2.1	2.1	2.0	2.2	2.2	2.3	2.4	2.5	2.8	2.5	2.8	3.0	2.8	2.5
Rubber and plastic products	1.7	1.6	1.6	1.7	1.7	1.8	1.7	1.7	1.8	1.8	1.8	1.7	1.7	1.7	1.8	1.8	1.7	1.7	1.8	1.8
Other nondurable goods ²	7.6	7.6	7.5	7.4	7.3	7.5	7.2	7.4	7.4	7.5	7.6	7.5	7.3	7.3	7.2	7.2	7.0	7.1	7.2	7.3
Finished goods																				
Manufacturing	108.8	107.5	107.9	109.7	110.2	110.0	111.1	113.9	114.9	118.0	121.4	120.7	122.7	124.4	124.3	124.2	125.0	123.6	123.5	124.9
Durable goods	55.7	55.4	55.3	55.8	55.9	55.6	56.5	58.0	58.9	59.9	61.5	61.2	62.1	62.4	62.1	62.2	61.3	60.9	61.3	61.8
Primary metals	5.4	5.4	5.7	5.5	5.7	5.4	5.6	5.7	5.8	6.1	6.1	6.2	6.3	6.4	6.4	6.5	6.4	6.3	6.2	6.3
Fabricated metals	7.1	6.9	7.0	6.8	6.8	6.7	6.9	6.8	6.9	7.1	7.3	7.2	7.5	7.4	7.5	7.3	7.5	7.3	7.2	7.6
Machinery, except electrical	12.3	11.8	11.4	12.0	11.9	12.2	12.4	13.0	13.0	13.3	13.8	14.0	14.5	14.8	14.2	14.0	14.1	13.9	14.6	14.1
Electrical machinery	8.1	7.9	8.1	8.2	8.2	8.0	7.8	8.0	7.8	7.7	7.9	8.2	8.2	8.3	8.4	8.1	7.9	7.7	7.7	7.7
Motor vehicles	2.4	2.5	2.6	2.6	2.8	2.8	2.7	2.9	3.0	3.1	3.3	3.0	3.0	3.1	3.0	3.1	3.1	3.1	3.0	3.0
Other transportation equipment	4.3	4.6	4.5	4.7	4.9	5.0	5.0	4.9	5.4	5.3	5.5	5.2	4.8	4.7	4.5	5.6	5.2	5.4	5.3	5.4
Other durable goods ¹	16.1	16.2	16.1	15.9	15.7	15.6	16.1	16.7	16.9	17.4	17.6	17.3	17.8	17.8	18.1	17.7	17.2	17.2	17.3	17.7
Nondurable goods	53.1	52.1	52.6	54.0	54.3	54.4	54.6	55.9	56.1	58.1	59.9	59.5	60.6	61.9	62.2	62.0	63.7	62.7	62.2	63.1
Food and kindred products	13.5	13.6	13.4	13.4	13.5	13.3	12.7	13.7	13.7	14.3	15.0	15.1	15.0	15.2	15.7	15.6	15.7	15.2	15.6	16.1
Paper and allied products	4.3	4.3	4.3	4.3	4.1	4.1	4.2	4.4	4.4	4.6	4.8	4.8	4.9	5.0	5.1	5.1	5.3	5.3	5.2	5.3
Chemicals and allied products	13.5	13.2	13.5	14.0	14.1	14.1	14.6	15.0	15.5	16.1	16.3	15.8	15.9	16.4	16.5	16.7	17.2	16.9	16.9	17.2
Petroleum and coal products	4.3	4.1	4.3	4.9	5.2	5.1	5.0	4.7	4.6	4.9	5.1	4.6	5.4	5.7	5.2	5.2	6.1	5.8	5.2	5.1
Rubber and plastic products	4.9	4.8	4.9	4.8	4.8	4.8	4.8	5.0	5.1	5.3	5.3	5.4	5.3	5.4	5.5	5.5	5.5	5.6	5.5	5.5
Other nondurable goods ²	12.6	12.2	12.2	12.6	12.7	13.2	13.3	13.0	12.7	12.9	13.3	13.7	14.1	14.2	14.3	13.9	13.9	13.9	13.7	14.0

See footnotes at end of table.

Table 4.—Real Manufacturing Inventories by Stage of Fabrication, Seasonally Adjusted, End of Period—Continued

[Billions of chained (1992) dollars]

	1992				1993				1994				1995				1996			
	I	II	III	IV	I	II	III	IV	I	II	III	IV	I	II	III	IV	Mar.	Apr.	May	June
Materials and supplies																				
Manufacturing	124.2	124.7	125.2	124.0	124.3	125.5	126.1	126.6	127.0	128.3	130.3	131.2	131.6	132.7	133.8	134.3	127.0	127.3	127.9	128.3
Durable goods	70.3	70.8	70.8	69.5	69.9	70.3	71.2	71.9	72.1	73.8	75.3	76.6	76.8	77.9	79.3	80.2	72.1	72.7	73.2	73.8
Primary metal industries	6.5	6.5	6.4	6.6	6.7	6.8	6.7	6.8	6.6	6.8	6.8	6.8	7.0	7.1	7.1	7.1	6.6	6.7	6.8	6.8
Fabricated metal products	8.3	8.5	8.5	8.4	8.4	8.2	8.3	8.5	8.1	8.3	8.5	8.6	8.5	8.6	8.3	8.1	8.1	8.1	8.2	8.3
Industrial machinery and equipment	13.0	13.0	13.4	13.5	13.7	14.2	14.1	14.5	14.8	15.8	16.4	16.9	17.2	17.2	17.8	18.2	14.8	15.2	15.4	15.8
Electronic and other electric equipment	10.4	10.4	10.4	10.5	10.6	10.7	11.0	11.0	11.7	12.2	12.7	13.4	14.2	15.0	16.1	16.2	11.7	11.8	12.0	12.2
Motor vehicles and equipment	5.8	5.9	5.9	5.9	6.0	6.1	6.3	6.3	6.3	6.4	6.5	6.5	6.2	6.1	5.9	6.0	6.3	6.4	6.6	6.4
Other transportation equipment	8.7	8.4	8.2	8.8	7.3	6.8	6.9	6.8	6.4	6.3	6.3	6.1	5.8	5.8	5.6	5.6	6.4	6.4	6.2	6.3
Other durable goods ¹	17.7	18.1	18.0	17.7	17.3	17.5	17.9	18.1	18.2	18.0	18.2	18.4	18.0	18.3	18.8	19.2	18.2	18.1	18.1	18.0
Nondurable goods	53.9	54.0	54.4	54.5	54.5	55.2	54.9	54.7	54.8	54.5	55.0	54.5	54.8	54.8	54.6	54.1	54.8	54.6	54.6	54.5
Food and kindred products	10.7	10.7	10.7	10.7	10.7	11.0	10.7	10.5	10.3	10.4	10.6	10.3	10.4	10.4	10.5	10.3	10.3	10.3	10.4	10.4
Paper and allied products	7.0	7.0	7.0	7.0	7.0	6.9	7.0	6.9	6.9	6.8	6.9	6.8	6.8	6.9	6.8	6.9	6.8	6.9	6.8	6.8
Chemicals and allied products	11.6	11.8	11.8	11.9	11.8	11.8	11.9	11.8	11.9	11.8	11.7	11.7	11.4	11.4	11.3	11.3	11.1	11.9	11.9	11.7
Petroleum and coal products	3.5	3.2	3.3	3.5	3.4	3.3	3.2	3.6	3.7	3.4	3.5	3.6	3.9	3.7	3.9	4.0	3.7	3.6	3.4	3.4
Rubber and miscellaneous plastic products	4.7	4.8	4.9	4.9	4.9	5.0	5.0	5.1	5.3	5.2	5.4	5.4	5.5	5.5	5.4	5.2	5.3	5.2	5.2	5.2
Other nondurable goods ²	17.7	18.1	18.0	17.7	17.3	17.5	17.9	18.1	18.2	18.0	18.2	18.4	18.0	18.3	18.8	19.2	18.2	18.1	18.1	18.0
Work-in-process																				
Manufacturing	131.6	127.8	125.5	124.3	123.9	124.6	125.6	125.8	125.6	126.2	125.5	124.7	125.0	125.4	126.7	128.0	125.6	124.9	125.3	126.2
Durable goods	108.9	105.2	102.7	101.4	100.9	101.8	102.5	102.5	101.9	102.7	101.8	101.2	101.8	102.3	103.6	105.0	101.9	101.5	101.8	102.7
Primary metals	7.4	7.5	7.2	7.2	7.2	7.0	7.3	7.2	7.2	7.2	7.1	7.2	7.2	7.5	7.6	7.7	7.2	7.1	7.2	7.2
Fabricated metals	7.6	7.5	7.6	7.4	7.3	7.3	7.3	7.1	7.1	7.1	7.1	7.2	7.2	7.2	7.1	7.0	7.1	7.0	7.1	7.1
Machinery, except electrical	18.4	18.1	18.2	18.1	17.7	18.3	19.3	19.9	20.3	20.7	20.4	19.8	20.3	20.8	20.6	21.2	20.3	20.1	19.8	20.7
Electrical machinery	11.4	11.1	11.4	11.6	11.7	11.3	11.6	11.6	12.0	12.7	13.1	13.6	13.8	13.6	14.1	15.1	12.0	12.1	12.5	12.7
Motor vehicles	4.2	4.3	4.2	4.1	4.3	4.5	4.2	4.4	4.3	4.2	4.2	4.2	4.5	4.5	4.4	4.3	4.2	4.2	4.2	4.2
Other transportation equipment	42.7	39.9	37.6	36.9	36.6	36.9	36.7	36.4	35.1	35.0	34.0	33.4	33.0	33.0	33.9	33.6	35.1	35.2	35.2	35.0
Other durable goods ¹	17.2	16.8	16.5	16.3	16.2	16.2	16.1	16.0	16.0	15.9	16.0	16.0	16.0	15.9	16.0	16.3	16.0	15.9	15.9	15.9
Nondurable goods	22.7	22.6	22.8	22.9	22.9	22.9	23.2	23.3	23.7	23.5	23.7	23.5	23.2	23.1	23.2	23.1	23.7	23.5	23.5	23.5
Food and kindred products	3.9	4.0	4.1	4.1	4.1	4.2	4.2	4.3	4.3	4.3	4.4	4.4	4.4	4.3	4.4	4.3	4.3	4.3	4.3	4.3
Paper and allied products	1.3	1.2	1.3	1.3	1.3	1.3	1.3	1.3	1.3	1.4	1.3	1.3	1.3	1.4	1.4	1.5	1.3	1.3	1.4	1.4
Chemicals and allied products	5.4	5.6	5.6	5.8	5.8	5.8	5.9	6.0	5.9	5.7	5.7	5.5	5.4	5.4	5.5	5.6	5.9	5.7	5.7	5.7
Petroleum and coal products	2.9	2.5	2.5	2.6	2.5	2.4	2.4	2.3	2.7	2.3	2.3	2.6	2.4	2.3	2.4	2.4	2.7	2.5	2.4	2.3
Rubber and plastic products	1.8	1.8	1.7	1.8	1.8	1.8	1.8	1.8	1.8	1.9	1.9	1.9	2.0	1.9	1.9	1.9	1.8	1.8	1.8	1.9
Other nondurable goods ²	7.4	7.5	7.5	7.4	7.4	7.4	7.5	7.6	7.7	7.9	8.0	7.8	7.8	7.7	7.6	7.3	7.7	7.8	7.8	7.9
Finished goods																				
Manufacturing	124.9	124.9	127.8	126.5	126.8	127.5	127.9	127.7	130.3	129.5	131.1	132.7	134.0	135.3	137.0	138.1	130.3	130.5	130.7	129.5
Durable goods	61.6	61.9	63.2	61.4	61.4	61.6	61.6	62.0	63.9	63.6	65.0	66.3	67.5	68.4	69.4	70.0	63.9	64.0	64.4	63.6
Primary metals	6.4	6.2	6.5	6.2	6.1	6.3	6.3	6.4	6.5	6.4	6.4	6.5	6.6	6.8	6.7	6.7	6.5	6.4	6.4	6.4
Fabricated metals	7.6	7.6	7.9	7.7	7.7	7.8	7.9	7.7	7.8	7.8	7.9	7.8	8.0	8.0	8.0	8.0	7.8	7.9	7.8	7.8
Machinery, except electrical	13.9	14.1	14.2	14.3	13.8	13.8	14.1	14.7	15.4	15.0	15.5	16.2	16.5	16.8	17.0	17.4	15.4	15.6	15.8	15.0
Electrical machinery	8.0	8.2	8.1	7.8	7.8	8.0	7.9	8.4	8.6	9.0	9.6	10.0	10.7	11.2	11.9	12.3	8.6	8.8	8.9	9.0
Motor vehicles	2.9	2.9	3.1	2.9	2.9	2.7	2.7	2.7	2.8	3.0	3.1	3.1	3.2	3.2	3.0	2.9	2.8	2.8	2.9	3.0
Other transportation equipment	5.2	4.9	5.4	4.7	4.8	5.0	4.7	4.1	4.4	4.1	4.2	4.3	4.5	4.2	4.1	4.0	4.4	4.3	4.3	4.1
Other durable goods ¹	17.6	17.9	18.0	17.9	18.3	18.0	18.0	18.1	18.4	18.3	18.4	18.4	18.2	18.5	18.9	19.0	18.4	18.3	18.3	18.3
Nondurable goods	63.3	63.0	64.6	65.1	65.4	65.9	66.3	65.7	66.4	65.9	66.1	66.4	66.6	67.0	67.7	68.1	66.4	66.5	66.3	65.9
Food and kindred products	16.0	16.4	16.7	16.7	16.8	17.0	16.8	16.6	16.9	17.0	17.5	17.4	17.5	17.1	16.8	16.7	16.9	17.0	17.2	17.0
Paper and allied products	5.4	5.5	5.6	5.5	5.5	5.4	5.5	5.6	5.6	5.7	5.5	5.3	5.3	5.4	5.7	6.0	5.6	5.7	5.7	5.7
Chemicals and allied products	17.3	16.9	17.6	17.7	17.7	17.7	18.0	17.7	17.9	18.0	17.7	17.7	17.5	18.0	18.3	18.1	17.9	18.1	18.0	18.0
Petroleum and coal products	5.3	5.0	4.9	5.0	5.0	4.8	4.7	4.9	5.0	4.4	4.6	5.0	4.9	5.0	5.0	5.0	4.8	4.6	4.4	4.4
Rubber and plastic products	5.3	5.4	5.5	5.7	5.7	5.8	5.9	5.9	6.0	6.0	6.1	6.1	6.2	6.3	6.4	6.5	6.0	6.0	6.0	6.0
Other nondurable goods ²	14.1	13.9	14.4	14.5	14.8	15.1	15.3	15.0	15.0	14.7	14.6	14.9	15.2	15.3	15.4	15.7	15.0	14.9	14.8	14.7

See footnotes at end of table.

Table 4.—Real Manufacturing Inventories by Stage of Fabrication, Seasonally Adjusted, End of Period—Continued

[Billions of chained (1992) dollars]

	1994						1995												1996	
	July	Aug.	Sep.	Oct.	Nov.	Dec.	Jan.	Feb.	Mar.	Apr.	May	June	July	Aug.	Sep.	Oct.	Nov.	Dec.	Jan. [/]	Feb. [/]
Materials and supplies																				
Manufacturing	129.2	129.4	130.3	130.4	130.9	131.2	131.2	131.7	131.6	131.9	132.2	132.7	133.1	133.6	133.8	134.7	134.8	134.3	135.1	135.6
Durable goods	74.6	74.8	75.3	75.7	76.5	76.6	76.6	77.1	76.8	77.3	77.6	77.9	78.5	79.1	79.3	80.4	80.3	80.2	80.8	81.2
Primary metal industries	6.8	6.8	6.8	6.9	6.9	6.8	6.9	7.1	7.0	6.9	7.0	7.1	7.1	7.1	7.1	7.1	7.1	7.1	7.1	7.2
Fabricated metal products	8.4	8.3	8.5	8.6	8.6	8.6	8.6	8.5	8.5	8.7	8.7	8.6	8.6	8.5	8.3	8.3	8.2	8.1	8.3	8.5
Industrial machinery and equipment	16.1	16.6	16.4	16.5	17.0	16.9	16.8	17.3	17.2	17.3	17.5	17.2	17.4	17.6	17.8	18.2	18.2	18.2	18.3	18.4
Electronic and other electric equipment	12.5	12.5	12.7	13.0	13.2	13.4	13.8	14.0	14.2	14.5	14.5	15.0	15.3	15.8	16.1	16.4	16.2	16.2	16.1	16.1
Motor vehicles and equipment	6.4	6.4	6.5	6.4	6.5	6.5	6.4	6.3	6.2	6.2	6.1	6.1	6.2	6.0	5.9	5.9	5.8	6.0	6.3	6.5
Other transportation equipment	6.4	6.2	6.3	6.2	6.2	6.1	6.0	5.9	5.8	5.7	5.8	5.8	5.6	5.6	5.6	5.6	5.7	5.6	5.6	5.4
Other durable goods ¹	18.1	18.1	18.2	18.3	18.3	18.4	18.2	18.2	18.0	18.2	18.2	18.3	18.5	18.7	18.8	19.0	19.3	19.2	19.3	19.4
Nondurable goods	54.6	54.6	55.0	54.7	54.4	54.5	54.5	54.6	54.8	54.6	54.6	54.8	54.6	54.5	54.6	54.3	54.4	54.1	54.3	54.3
Food and kindred products	10.3	10.5	10.6	10.7	10.6	10.3	10.4	10.5	10.4	10.3	10.3	10.4	10.4	10.4	10.5	10.4	10.3	10.3	10.2	10.3
Paper and allied products	6.9	6.9	6.9	6.9	6.8	6.8	6.8	6.8	6.8	6.8	6.8	6.9	6.8	6.8	6.8	6.8	6.8	6.8	6.7	6.8
Chemicals and allied products	11.8	11.7	11.7	11.6	11.6	11.7	11.5	11.4	11.4	11.3	11.3	11.4	11.4	11.3	11.3	11.3	11.4	11.3	11.4	11.4
Petroleum and coal products	3.3	3.3	3.5	3.5	3.5	3.6	3.6	3.5	3.9	3.6	3.6	3.7	3.8	3.8	3.9	3.8	4.0	4.0	4.0	3.9
Rubber and miscellaneous plastic products	5.3	5.3	5.4	5.4	5.3	5.4	5.5	5.6	5.5	5.5	5.5	5.5	5.5	5.4	5.4	5.3	5.3	5.2	5.3	5.3
Other nondurable goods ²	18.1	18.1	18.2	18.3	18.3	18.4	18.2	18.2	18.0	18.2	18.2	18.3	18.5	18.7	18.8	19.0	19.3	19.2	19.3	19.4
Work-in-process																				
Manufacturing	126.5	126.3	125.5	125.2	125.3	124.7	125.8	125.6	125.0	125.3	126.0	125.4	126.3	126.0	126.7	126.8	127.5	128.0	129.6	129.8
Durable goods	102.8	102.7	101.8	101.5	101.4	101.2	102.4	102.3	101.8	102.3	103.0	102.3	103.1	103.0	103.6	103.8	104.5	105.0	106.4	106.6
Primary metals	7.4	7.3	7.1	7.1	7.2	7.2	7.1	7.1	7.2	7.3	7.4	7.5	7.5	7.5	7.6	7.6	7.7	7.7	7.8	7.8
Fabricated metals	7.3	7.3	7.1	7.1	7.1	7.3	7.1	7.1	7.2	7.1	7.2	7.1	7.1	7.1	7.1	7.1	7.1	7.0	6.8	6.8
Machinery, except electrical	20.2	20.3	20.4	20.1	20.3	19.8	21.0	20.7	20.9	20.6	20.8	20.8	20.9	20.9	20.6	20.6	20.9	21.2	21.6	22.0
Electrical machinery	12.8	12.9	13.1	13.3	13.4	13.6	13.6	14.0	13.8	13.8	13.7	13.6	13.9	13.7	14.1	14.3	14.6	15.1	15.6	15.2
Motor vehicles	4.4	4.3	4.2	4.3	4.3	4.2	4.4	4.4	4.5	4.8	4.5	4.5	4.6	4.5	4.7	4.7	4.7	4.4	4.3	4.2
Other transportation equipment	34.9	34.8	34.0	33.8	33.4	33.4	33.3	33.1	33.0	33.1	33.4	33.0	33.4	33.4	33.9	33.6	33.4	33.6	34.0	34.5
Other durable goods ¹	16.0	16.0	16.0	16.0	16.0	16.0	16.1	16.1	16.0	16.1	16.0	15.9	16.0	15.9	16.0	16.1	16.3	16.3	16.4	16.4
Nondurable goods	23.7	23.6	23.7	23.7	23.9	23.5	23.4	23.4	23.2	23.0	23.1	23.2	23.2	23.1	23.2	23.1	23.1	23.1	23.3	23.2
Food and kindred products	4.4	4.3	4.4	4.5	4.4	4.4	4.3	4.2	4.3	4.3	4.3	4.3	4.3	4.3	4.4	4.4	4.3	4.3	4.4	4.4
Paper and allied products	1.3	1.3	1.3	1.3	1.3	1.3	1.4	1.3	1.3	1.3	1.3	1.4	1.4	1.4	1.4	1.4	1.5	1.5	1.5	1.5
Chemicals and allied products	5.7	5.7	5.7	5.5	5.6	5.5	5.4	5.4	5.4	5.3	5.4	5.4	5.5	5.4	5.5	5.5	5.5	5.6	5.6	5.7
Petroleum and coal products	2.3	2.4	2.3	2.4	2.6	2.6	2.6	2.7	2.4	2.3	2.4	2.3	2.3	2.3	2.4	2.3	2.3	2.4	2.5	2.3
Rubber and plastic products	1.9	1.9	1.9	1.9	1.9	1.9	1.9	2.0	2.0	1.9	2.0	1.9	1.9	1.9	1.9	1.9	1.9	1.9	1.9	1.9
Other nondurable goods ²	8.0	8.0	8.0	8.0	8.2	7.8	7.8	7.8	7.8	7.7	7.7	7.7	7.8	7.7	7.6	7.5	7.5	7.3	7.4	7.3
Finished goods																				
Manufacturing	131.5	132.1	131.1	131.7	132.1	132.7	133.1	133.5	134.0	134.3	134.6	135.3	135.8	135.6	137.0	137.7	137.2	138.1	138.1	138.6
Durable goods	64.5	65.2	65.0	65.5	65.9	66.3	66.5	66.6	67.5	67.5	67.8	68.4	68.7	68.7	69.4	70.1	69.9	70.0	70.1	70.4
Primary metals	6.4	6.4	6.4	6.5	6.6	6.5	6.6	6.5	6.6	6.7	6.7	6.8	6.8	6.7	6.7	6.7	6.6	6.7	6.7	6.7
Fabricated metals	8.0	8.1	7.9	7.8	7.8	7.8	7.9	7.9	8.0	7.9	8.0	8.0	8.0	8.0	8.0	8.0	8.0	8.0	8.0	8.1
Machinery, except electrical	15.5	15.5	15.5	16.0	15.8	16.2	16.2	16.3	16.5	16.4	16.6	16.8	16.8	16.8	17.0	17.0	17.5	17.4	17.9	17.9
Electrical machinery	9.1	9.4	9.6	9.7	10.0	10.0	10.4	10.5	10.7	10.9	11.1	11.2	11.5	11.7	11.9	12.3	12.1	12.3	12.4	12.5
Motor vehicles	3.1	3.0	3.1	2.9	2.9	3.1	3.1	3.0	3.2	3.2	3.1	3.2	3.1	2.9	3.0	2.9	2.8	2.9	2.8	2.8
Other transportation equipment	4.1	4.2	4.2	4.3	4.4	4.3	4.2	4.3	4.5	4.2	4.3	4.2	4.2	4.1	4.1	4.6	4.3	4.0	3.6	3.9
Other durable goods ¹	18.4	18.6	18.4	18.4	18.5	18.4	18.3	18.2	18.2	18.3	18.3	18.5	18.5	18.6	18.9	19.0	18.9	19.0	19.0	19.0
Nondurable goods	67.0	66.9	66.1	66.2	66.2	66.4	66.7	66.9	66.6	66.8	66.8	67.0	67.1	66.9	67.7	67.7	67.4	68.1	68.0	68.3
Food and kindred products	17.6	17.6	17.5	17.5	17.5	17.4	17.6	17.6	17.5	17.4	17.3	17.1	16.9	16.6	16.8	16.8	16.8	16.7	16.5	16.6
Paper and allied products	5.7	5.6	5.5	5.4	5.3	5.3	5.2	5.3	5.3	5.3	5.3	5.4	5.5	5.5	5.7	5.8	5.8	6.0	6.1	6.2
Chemicals and allied products	18.2	17.9	17.7	17.6	17.6	17.7	17.7	17.8	17.5	17.8	18.0	18.0	18.1	18.1	18.3	18.1	17.8	18.1	18.0	18.0
Petroleum and coal products	4.7	4.8	4.6	4.8	5.0	5.0	5.2	5.2	4.9	4.9	4.9	5.0	5.0	5.0	5.0	4.9	4.9	5.0	5.0	5.0
Rubber and plastic products	6.1	6.1	6.1	6.2	6.0	6.1	6.1	6.2	6.2	6.3	6.2	6.3	6.3	6.3	6.4	6.4	6.4	6.5	6.5	6.5
Other nondurable goods ²	14.8	14.8	14.6	14.7	14.8	14.9	14.8	14.9	15.2	15.1	15.2	15.3	15.3	15.4	15.4	15.5	15.6	15.7	15.8	15.8

[/] Preliminary.

1. Includes lumber and wood products; furniture and fixtures; stone, clay, and glass products; instruments and related products; and miscellaneous manufacturing industries.

2. Includes tobacco manufacturers; textile mill products; apparel products; printing and publishing; and leather and leather products.

NOTES.—Manufacturing inventories are classified by the type of product produced by the establishment holding the inventory. Trade inventories are classified by the type of product sold by the establishment holding the inventory.

Chained (1992) dollar series are calculated as the product of the chain-type quantity index and the 1992 current-dollar value of the corresponding series, divided by 100. Because the formula for the chain-type quantity indexes uses weights of more than one period, the corresponding chained-dollar estimates are usually not additive.