

CONTENTS

10.A. OFFICER EVALUATION SYSTEM	1
10.A.1. GENERAL	1
10.A.1.a. Purpose	1
10.A.1.b. Policy	1
10.A.1.c. Definitions	1
10.A.1.d. System Goals	3
10.A.2. RESPONSIBILITIES	4
10.A.2.a. The Rating Chain	4
10.A.2.b. Commanding Officers	4
10.A.2.c. Reported-on Officer	6
10.A.2.d. Supervisor	7
10.A.2.e. Reporting Officer	9
10.A.2.f. Reviewer	11
10.A.2.g. Rating Chain Exceptions	13
10.A.2.h. OER Administrator	14
10.A.2.i. Commander, Coast Guard Personnel Command	15
10.A.3. SUBMISSION SCHEDULE	16
10.A.3.a. Regular OERs	16
10.A.3.b. OER Waivers	30
10.A.3.c. Exception OERs	30
10.A.3.d. Evaluation of Performance while Recalled to Active Duty from Retired Status	32
10.A.3.e. Reserve Specific OERs	33
10.A.4. PREPARATION AND PROCESSING OF EVALUATION REPORTS	37
10.A.4.a. General	37
10.A.4.b. Forms	38
10.A.4.c. Preparation	38
10.A.4.d. Format for Reviewer Comments	47
10.A.4.e. OER Administrator	47
10.A.4.f. Restrictions	48
10.A.4.g. Reported-on Officer Reply	49
10.A.4.h. Derogatory Reports	51
10.A.4.i. Format for Addendum	52
10.A.4.j. Review of OERs at Coast Guard Personnel Command	52
10.A.4.k. Correction of OERs	53
10.A.5. PREPARATION AND USE OF THE DUTY UNDER INSTRUCTION (DUINS) OER	53
10.A.5.a. General	53
10.A.5.b. Designation of Rating Chain Members	54
10.A.5.c. Preparation	56
10.A.6. PREPARATION AND USE OF THE OSF WORKSHEET	57
10.A.6.a. General	57
10.A.6.b. Functions of the OSF	58
10.A.6.c. The Form	58
10.A.6.d. Preparation	59
10.A.6.e. Disposition of the OSF	61
10.A.7. CORRECTION OF MILITARY RECORDS	62

10.A.8. OES CHANGES	62
10.A.8.a. General	62
10.A.8.b. Participation	63

10.A. Officer Evaluation System

10.A.1. General

This chapter applies to both active duty (ADPL) and reserve (IDPL) officers. Expanded reserve-specific guidance is provided as necessary. Commander, Coast Guard Personnel Command manages the officer evaluations system for all Coast Guard officers.

10.A.1.a. Purpose

The Coast Guard Officer Evaluation System (OES) has been designed to:

1. Provide information for important personnel management decisions. Especially significant among these decisions are promotions, assignments, and career development.
2. Set performance and character standards to evaluate each officer.
3. Prescribe organizational values by which each Coast Guard officer can be described.
4. Provide a means of feedback to determine how well an officer is measuring up to the standards.

10.A.1.b. Policy

1. Commanding officers must ensure accurate, fair, and objective evaluations are provided to all officers under their command. To that end, performance evaluation forms have been made as objective as possible, within the scope of jobs and tasks performed by officers. In using the Officer Evaluation Form, CG-5310 (series), strict and conscientious adherence to specific wording of the standards is essential to realizing the purpose of the evaluation system.
2. Individual officers are responsible for managing their performance. This responsibility entails determining job expectations, obtaining sufficient performance feedback, and using that information to meet or exceed standards.

10.A.1.c. Definitions

The following terms apply to the officer evaluation system:

1. Officer Evaluation System (OES). The Coast Guard system which addresses performance appraisal of its officers.
2. Officer Evaluation Reports (OER). Form CG-5310 (series), used to document Coast Guard officers' performance and potential. Key elements of the form are as follows:

COAST GUARD PERSONNEL MANUAL CHAPTER 10.A.

- a. Performance Dimensions. The items on which the Coast Guard evaluates its officers (e.g. writing, judgment, etc.).
- b. Evaluation Areas. The four major performance categories into which all performance dimensions are grouped (e.g. Performance of Duties, Leadership Skills, etc.).
- c. Performance Standards. The prescribed expectation levels within each performance dimension. The standards are written to provide a common frame of reference among rating officials to which an officer's observed performance and qualities may be compared. Each dimension has three separate written standards of performance:

Below standard	Describes performance not measuring up to the levels expected
Standard	Describes the high level of performance expected of all Coast Guard officers
Above standard	Describes superlative performance

3. Officer Support Form (OSF) CG-5308. The worksheet used to describe duties, establish goals, document accomplishments, and facilitate performance feedback.
4. Rating Chain. The succession of individuals who are responsible for preparing, completing, and reviewing an officer's OER as defined by the following roles:
 - a. Reported-on Officer. The subject of the OER. All commissioned officers of the Coast Guard are evaluated periodically. Flag officers are evaluated under a separate system.
 - b. Supervisor. Normally, the individual to whom the Reported-on Officer answers on a daily or frequent basis and from whom the Reported-on Officer receives the majority of direction and requirements.
 - c. Reporting Officer. Normally the Supervisor's supervisor.
 - d. Reviewer. Normally the Reporting Officer's supervisor.
5. Performance Feedback. No specific form or forum is prescribed for performance feedback. Performance feedback occurs whenever a subordinate receives advice or observations related to their performance in any evaluation area. Performance feedback can take place formally (e.g., during a conference) or informally (e.g., through on-the-spot comments). Regardless of the forum, each officer should receive timely counseling and be clear about the feedback received. If the

feedback is not fully understood, it is the Reported-on Officer's responsibility to immediately seek clarification and the rating chain's responsibility to provide it.

10.A.1.d. System Goals

1. Personnel Management. The OES is an important part of the Coast Guard officer personnel management system. It supplies information to Commander, (CGPC-opm) and Commander (CGPC-rpm) for personnel management decisions in a variety of areas.
 - a. Promotion. Throughout their careers, Coast Guard officers are selected for promotion to the next grade by boards of officers. Except for promotion to the grade of lieutenant (junior grade), more officers are eligible for promotion than are authorized under budget and statutory constraints. The cumulative file of officer performance evaluations provides one of the bases for selection of the best qualified officers from among those eligible.
 - b. Assignment. Prior performance, personal qualities, and potential for increased responsibilities, as documented in each officer's OER file, are important considerations in decisions made by assignment managers and panels. While a number of other factors such as billet requirements, experience, personal desires, and availability are also considered, the high level of competition for many assignments places even greater emphasis on performance.
 - c. Career Development. Career development is a cooperative process that seeks to meet immediate and future Coast Guard needs while satisfying the personal and professional aspirations of individual officers. The OES is a vehicle for performance feedback and career counseling by the rating chain and assignment managers.
 - d. Performance Feedback. Performance feedback is an essential part of every officer's career development. Performance feedback by use of the OSF is the prescribed format for ensigns and lieutenants (junior grade). However, rating chains are strongly encouraged to provide timely performance feedback during and at the end of each reporting period for all officers. Rating chains are strongly encouraged to provide a copy of the completed OERs to reported-on-officers prior to submission of the OERs to OER administrators.
2. Command and Control. The OES reinforces command authority by providing a clear delineation of the span of control and responsibility. While missions and resources primarily dictate organization, the OES can assist commanding officers in delineating lines of authority and responsibility, and ensuring common understanding of responsibilities.

3. Maintenance of Coast Guard Values and Standards. Each officer is evaluated in the OES, not only regarding job achievements, but also on common professional values and Service standards. These values are not only customs, but conditions of employment in the Coast Guard. They are defined by the performance dimensions and standards listed on the OER.

10.A.2. Responsibilities

10.A.2.a. The Rating Chain

The rating chain provides the assessment of an officer's performance and value to the Coast Guard through a system of multiple evaluators and reviewers who present independent views and ensure accuracy and timeliness of reporting. It reinforces decentralization by placing responsibilities for development and performance evaluation at the lowest levels within the command structure. The rating chain consists of the following members:

1. The Reported-on Officer
2. The Supervisor
3. The Reporting Officer
4. The Reviewer

10.A.2.b. Commanding Officers

1. Designation. Commanding officers are responsible to ensure members of the rating chain carry out their OES responsibilities. For the purpose of these instructions, commanding officers include area and district commanders, commanders of maintenance and logistics commands, commanding officers of Headquarters units and subordinate units or organizations and cutters.
2. Responsibilities. Commanding officers:
 - a. Implement the OES within their commands.
 - b. Designate and publish the command's rating chains.
 - c. Provide copies of rating chains to OER Administrators.
 - d. Assist and encourage the professional growth and knowledge of assigned officers by **publishing the contents of Schedule of Active Duty Promotion List (ADPL) and Inactive Duty Promotion List (IDPL) Officer Personnel Boards and Panels, COMDTINST 1401.5 (series).**
 - e. Establish procedures that ensure timely submission of reports. Ensure that OERs for officers eligible for promotion or panel action are not delayed.

COAST GUARD PERSONNEL MANUAL CHAPTER 10.A.

- f. Provide local oversight and accountability for the proper preparation of OERs. Commanding officers are encouraged to monitor OERs submitted by the designated rating chain within their commands as a means of ensuring consistency.
- g. Encourage supervisors and reporting officers to properly counsel subordinates by providing them timely feedback at the end of each reporting period and providing copies of completed OERs to them prior to submission to the OER administrator.
- h. Encourage recurring training, for all officers within their commands, on the intent and procedures of the OES.
- i. Obtain formal training from Commander (CGPC-opm) or Commander (CGPC-rpm) for civilian employees of the Coast Guard who must perform the duties of either Supervisor or Reporting Officer. Civilians shall not be assigned to a rating chain before receiving OES training certification from Commander (CGPC-opm) or Commander (CGPC-rpm) and having incorporated the OES rating chain responsibilities in their Core Competencies.
- j. Apply the following guidelines to officers who are unable to fully perform due to illness, injury, pregnancy, etc.
 - (1) Periodically, officers may experience circumstances due to a temporary condition which result in a limited opportunity to perform. These circumstances may involve specific performance restrictions (e.g., those imposed by a medical authority), which require restructuring or reassignment of duties. While no preferential treatment shall be given, commanding officers shall ensure that these individuals do not receive below standard evaluations strictly as a consequence of these circumstances.
 - (2) Commanding officers, in consultation with the health care providers, must establish a “reasonable expectation of performance” given the individual’s current circumstances. In particular, commanding officers must determine whether or not an individual requires reassignment to a different work environment and/or restrictions on performing specific types of tasks. Additionally, reduced work hours may be necessary. When considering reassignment or restructuring of duties, commanding officers should strive to identify service needs which complement the temporarily limited abilities of the officer.
- k. Ensure performance in meeting requirements of the Coast Guard occupational health and safety program are documented appropriately and consistently with the Reported-on Officer’s assigned responsibilities and authority (This paragraph complies with Article 1960.11 of 29 CFR XVII.).

10.A.2.c. Reported-on Officer

1. Designation. The subject of the OES. All Coast Guard commissioned officers, except flag officers, are evaluated periodically.
2. Responsibilities. The Reported-on Officer:
 - a. Learns the intent and procedures of the OES and identifies the members of the rating chain from the published list.
 - b. Requests an appointment with the Supervisor, to occur not later than 21 days before the beginning of each reporting period, if clarification of duties and areas of emphasis is needed. This information may be delineated on the optional OSF worksheet or other format as specified by the Supervisor. A meeting shall be requested not later than seven days after reporting aboard a new unit.
 - c. As necessary, seeks performance feedback from the Supervisor during the period.
 - d. Prepares OER Section 1, Administrative Data, and Section 13, Return Address (found on page 4 of the OER form), and forwards the OER with proposed OER attachments to the Supervisor not later than 21 days before the end of the reporting period.
 - e. May submit to the Supervisor not later than 21 days before the end of the reporting period a listing of significant achievements or aspects of performance which occurred during the period. Submission is at the discretion of the Reported-on Officer, unless directed by the Supervisor. The optional OSF worksheet may be used. Supplemental information may be submitted through the end of the reporting period.
 - f. Notifies the Supervisor not later than 21 days before the end of the reporting period if the Reported-on Officer desires an end-of period conference.
 - g. Informs Commander (CGPC-rpm) or Commander (CGPC-opm-3) directly by written communication (e.g. e-mail) if the **original validated** OER has not been received 90 days after the end of the reporting period. The correspondence shall include a return address, phone number, period of report, and rating chain names with phone numbers.
 - h. Ensures that all days of commissioned service are covered by OERs. If an OER is missing or a gap in coverage exists, informs the appropriate rating chain. The rating chain shall take necessary action to correct the discrepancy.
 - i. Ensures that other than Coast Guard rating officials are provided a copy of these instructions, appropriate forms, and other literature provided by

COAST GUARD PERSONNEL MANUAL CHAPTER 10.A.

Commander (CGPC-opm) or Commander (CGPC-rpm).

- j. Reviews COMDTINST 1401.5 (series) and COMDTINST M1500.10 (series) and manages performance to ensure that OERs are not delayed when eligible for promotion or applying for advanced training.
 - k. Assumes ultimate responsibility for managing own performance, notwithstanding the responsibilities assigned to others in the rating chain. This includes ensuring performance feedback is thorough, and that OERs and associated documentation are timely and accurate.
3. Mandatory meetings and use of the OSF for ensigns and lieutenants (junior grade). All Reported-on Officers in these grades must request initial and end-of-period meetings with their Supervisors and must submit a summary of achievements and other aspects of performance prescribed in subparagraphs b., e., and f. above. In cases of geographic separation, telephone or written exchange of information may suffice.

10.A.2.d. Supervisor

1. Designation.

- a. Normally the individual to whom the Reported-on Officer answers on a daily or frequent basis and from whom the Reported-on Officer receives the majority of direction and requirements.
- b. Coast Guard officers, officers of other U.S. Armed Forces, officers of Foreign Armed Services (who serve in a supervisory capacity for the Reported-on Officer), U.S. Public Health Service officers, and U.S. government civilian employees may serve as Supervisors. The supervisor of a reserve officer may be either an active duty or reserve officer or individual stated above. If the Supervisor is not a Coast Guard employee, specify which branch of service (i.e., USN, USA, USAF, DOD) in section 6a. of the OER Form.
- c. The Supervisor will normally be senior to the Reported-on Officer. However, in appropriate situations, the Supervisor may be designated, regardless of grade relative to the Reported-on Officer.
- d. When an officer responds to more than a single individual for different functions, the commanding officer shall appoint one individual to the position of Supervisor (to whom all secondary supervisors will provide evaluation input).
- e. When a situation exists which requires concurrent reports, dual supervision may also exist. In such instances, different Supervisors may be appointed for each rating chain.

2. Responsibilities. The Supervisor:
- a. Evaluates the performance of the Reported-on Officer in the execution of duties.
 - b. Provides direction and guidance to the Reported-on Officer regarding specific duties and responsibilities.
 - c. Discusses at the beginning of the period, upon request, or when deemed necessary, the Reported-on Officer's duties and areas of emphasis. The optional or **required** OSF worksheet, or other format specified by the Supervisor, may be used as an aid.
 - d. Encourages the use of the optional/**required** OSF worksheet, or other convenient means, to note important aspects of the Reported-on Officer's performance during the reporting period. Significant events, problems, achievements, failures, or personal qualities should be noted.
 - e. Provides timely performance feedback to the Reported-on Officer upon that officer's request during the period, at the end of each reporting period and at such other times as the Supervisor deems appropriate.
 - f. Counsels the Reported-on Officer at the end of the reporting period if requested, or when deemed appropriate, regarding observed performance. Discusses duties and responsibilities for the subsequent reporting period and makes suggestions for improvement and development.
 - g. Finalizes the optional or **required** OSF worksheet, if used; Articles 10.A.6.d. and e.
 - h. Prepares the Supervisor's sections (2-6) of the OER; Article 10.A.4.c
 - i. Initiates an OER if the Reported-on Officer is unavailable, unable, or unwilling to perform in a timely manner. Forwards the OER, the OSF worksheet (if used or **required**), OER attachments, and any other relevant performance information to the Reporting Officer not later than 10 days after the end of the reporting period.
 - j. Provides the new Supervisor with a draft of OER sections (3-6) when the Supervisor changes during a reporting period. The draft may be handwritten and shall include marks and comments (bullet statements are acceptable) for the period of observation. It shall be prepared and signed by the departing Supervisor prior to departure.

10.A.2.e. Reporting Officer

1. Designation.

- a. The Reporting Officer is normally the supervisor of the Supervisor.
- b. Coast Guard officers, officers of other U.S. Armed Forces, officers of Foreign Armed Services, U.S. Public Health Service officers, and U.S. government civilian employees may serve as Reporting Officers. The reporting officer of a reserve officer may be either an active duty or reserve officer or individual stated above. If Reporting Officer is not a Coast Guard employee, specify which branch of service (i.e., USN, USA, USAF, DOD) in section 11a. of the OER Form.
- c. The Reporting Officer will normally be senior to the Reported-on Officer. Except for commanding officers, at least two year groups should normally separate these rating chain positions if they are of the same grade. Commander (CGPC-opm) or Commander (CGPC-rpm) will handle exceptions to this policy on a case-by-case basis.
- d. The Reporting Officer for an officer other than the commanding officer, will normally be designated no higher than the unit's commanding officer.
- e. The following officers in the grade of LT or above, or civilian members of the Coast Guard Senior Executive Service (SES), can be both Supervisor and Reporting Officer for their immediate subordinates:
 - (1) Commanding Officers.
 - (2) Headquarters: Assistant Commandants, Directors, Deputy Directors, Office and Division Chiefs.
 - (3) **Deputy Commanders, Executive Officers, Chiefs of Staff, Division and Branch Chiefs and Staff Chiefs (result of vertical alignment with Sectors) at:**
 - (a) **Area Commands (LANTAREA, PACAREA – not Area sub units).**
 - (b) **Maintenance and Logistics Commands (MLCLANT, MLCPAC – not MLC sub units).**
 - (c) Districts.
 - (d) Headquarters units.

COAST GUARD PERSONNEL MANUAL CHAPTER 10.A.

Any exceptions not specifically cited herein must be authorized by Commander (CGPC-opm) or Commander (CGPC-rpm). See j. below on Reporting Officers for captain evaluations.

- f. The Headquarters program manager having technical responsibility for the unit will be the Reporting Officer for commanding officers of Headquarters units.
- g. The Reporting Officer for an officer assigned to another Service's staff or mission will be the commanding officer or senior staff officer to whom the Reported-on Officer is assigned.
- h. The Reporting Officer of officers under direct supervision of civilian employees outside the Coast Guard but within the Department of Homeland Security (DHS) shall be designated by appropriate DHS directive.
- i. The Headquarters program manager who exercises technical responsibility for the program will be the Reporting Officer for officers assigned to duty in civilian agencies other than DHS or in liaison service with other governments.
- j. The Reporting Officer for all captains must be a flag officer or a civilian member of the Coast Guard Senior Executive Service (SES). This requirement is not mandatory for assignments outside the Coast Guard.

2. Responsibilities. The Reporting Officer:

- a. Bases evaluation on direct observation, the OSF or other information provided by the Supervisor, and other reliable reports and records.
- b. Describes the demonstrated leadership ability and the overall potential of the Reported-on Officer for promotion and special assignment such as command. Prepares Reporting Officer sections of the OER; Article 10.A.4.c.
- c. Ensures the Supervisor fully meets responsibilities for administration of the OES. Reporting Officers are expected to hold designated Supervisors accountable for timely and accurate evaluations. The Reporting Officer shall return a report for correction or reconsideration, if the Supervisor's submission is found inconsistent with actual performance or unsubstantiated by narrative comments. The Reporting Officer **shall not direct** that an evaluation mark or comment be changed (unless the comment is prohibited under Article 10.A.4.f.).
- d. Forwards the completed OER to the Reviewer; returns the OSF, if used/**required** to the Reported-on Officer.

- e. Initiates an OER if the Supervisor does not perform in a timely manner. Ensures the OER is forwarded to the Reviewer not later than 30 days after the end of the reporting period.
- f. Provides timely performance feedback to the Reported-on Officer at the end of each reporting period and at such other times as the reporting officer deems appropriate.
- g. If the Reporting Officer changes and a complete OER is not submitted, the departing Reporting Officer shall provide the new Reporting Officer a draft of the applicable OER sections. The draft may be handwritten and shall include marks and comments (bullet statements are acceptable) for the period of observation, prepared and signed by the departing Reporting Officer; Article 10.A.3.a.
- h. An outgoing Reporting Officer shall provide a written report to the new Reporting Officer listing those officers for whom the outgoing Reporting Officer is preparing complete OERs and for whom signed OER drafts have been provided.

10.A.2.f. Reviewer

1. Designation.

- a. The Reviewer is normally the Supervisor of the Reporting Officer. While the Supervisor and Reporting Officer are specific individuals, the Reviewer is a position designated by competent authority, which in certain circumstances may be junior to the Reporting Officer. The officer occupying that position has a definite OES administrative function and may perform an evaluative function.
- b. Only Coast Guard commissioned officers, the USPHS flag officer serving as Director of Health and Safety, Commandant (CG-11), or Coast Guard SES member, may serve as Reviewer.
- c. A commanding officer may serve as Reviewer for a Reported-on Officer if that commanding officer is not otherwise in the Reported-on Officer's rating chain. (For any officer at a major command whose position is lower than the department head level, the rating chain should be structured so that the Reviewer is no higher than the commanding officer.) In certain situations (e.g., CO on extended TAD), Executive Officers and Deputy Commanders serving in an "Acting" capacity may sign as reviewer if not otherwise in the rating chain. "For" signatures are not authorized under any circumstances.
- d. Flag officers shall serve as Reviewers on those reports for which they are Reporting Officers. Civilian members of the Senior Executive Service (SES)

COAST GUARD PERSONNEL MANUAL CHAPTER 10.A.

may serve as Reviewers on those reports for which they are Reporting Officers. Only flag officers or SES members may serve as Reviewers on OERs for which they have also been Reporting Officers. When a flag officer or SES member serves as both Supervisor and Reporting Officer on the same OER, the following will serve as Reviewer:

SUPERVISOR/REPORTING OFFICER	REVIEWER
Headquarters Assistant Commandant	Chief of Staff
Area Commander	Vice Commandant
MLC Commander	Area Commander
District Commander	Area Commander
All Others	Vice Commandant

- e. No one may serve as Supervisor, Reporting Officer, and Reviewer on the same OER except for the Commandant (G-C); and Commandant (G-L); the latter may sign as Supervisor, Reporting Officer, and Reviewer for the OER of the Coast Guard’s Chief Trial Judge.
 - f. The responsible Headquarters **or Area** program manager will be the Reviewer for reports of officers assigned to other Services or agencies as liaison officers. If no appropriate program manager is obvious, Commander (CGPC-opm) or Commander (CGPC-rpm) will identify, or act, as a Reviewer.
 - g. The Reviewer of a Captain’s OER must be a flag officer or Coast Guard SES member except in the case of captains assigned to Senior Service Schools, in which case the Reviewer is the appropriate program manager.
2. Responsibilities. The Reviewer:
- a. Ensures the OER reflects a reasonably consistent picture of the Reported-on Officer’s performance and potential.
 - b. Adds comments as necessary, using form CG-5315 (series), that further address the performance and/or potential of the Reported-on Officer not otherwise provided by the Supervisor or Reporting Officer. For any officer whose Reporting Officer is not a Coast Guard commissioned officer, member of the Coast Guard Senior Executive Service (SES), or a USPHS flag officer serving with the Coast Guard, Commandant (CG-11), the Reviewer shall describe the officer’s “Potential” and include an additional “Comparison Scale” or “Rating Scale” mark. The comparison scale is not to be completed unless the Reviewer comments are mandatory. Local reproductions of form CG-5315 may be used; see Article 10.A.4.d. for the format for Reviewer comments and Article 10.A.4.c.11.g. for circumstances when Reviewer comments are mandatory.

- c. Ensures the Supervisor and the Reporting Officer have adequately executed their responsibilities under the OES. The Reviewer shall return an OER to the Reporting Officer to correct errors, omissions, or inconsistencies between the numerical evaluation and written comments. However, the Reviewer shall not direct in what manner an evaluation mark or comment be changed (unless the comment is prohibited under Article 10.A.4.f.).
- d. Counsels Reporting Officers whose evaluation habits deviate significantly from the prescribed procedures. Deficiencies in OES performance on the part of Reporting Officers and Supervisors should be noted for performance feedback and considered in the respective officers' OERs.
- e. Expedites the reviewed report in a reasonable time to permit the OER Administrator to ensure the OER is received by Commander (CGPC-opm-3) or Commander (CGPC-rpm) 45 days after the end of the reporting period.
- f. Ensures an OER returned by Commander (CGPC-opm-3) or Commander (CGPC-rpm) is forwarded to the responsible Reporting Officer for timely correction.

10.A.2.g. Rating Chain Exceptions

- 1. In instances where a Supervisor, Reporting Officer, or Reviewer is unavailable or disqualified to carry out their rating chain responsibilities, the commanding officer or the next senior officer in the chain of command shall designate an appropriate substitute who is capable of evaluating the Reported-on Officer. Other members in the rating chain may be adjusted and designated, as appropriate. Commander (CGPC-opm-3) or Commander (CGPC-rpm) shall be advised in writing of the designation(s). The timing of the substitution may preclude full use of the OSF; however, that fact alone does not invalidate the OER.
- 2. As used within this subparagraph:
 - a. "Unavailable" includes illness, injury, death, prolonged absence, transfer, separation from the Service, retirement, or any other situation which prevents or substantially hinders the Supervisor, Reporting Officer, or Reviewer from properly carrying out their rating chain responsibilities.
 - b. "Disqualified" includes relief for cause due to misconduct or unsatisfactory performance, being an interested party to an investigation or court of inquiry, or any other situation in which a personal interest or conflict on the part of the Supervisor, Reporting Officer, or Reviewer raises a substantial question as to whether the Reported-on Officer will receive a fair, accurate evaluation.
 - c. If not already determined by the commanding officer, it is incumbent on the Reported-on Officer to identify to the next senior officer in the chain-of-

command that an exception to the designated rating chain may exist. This issue should be raised by the Reported-on Officer during the reporting period or within 30 days after the end of the reporting period.

10.A.2.h. OER Administrator

1. Designation:

STAFF/UNIT TYPE	OER ADMINISTRATOR
Headquarters	Headquarters Support Command
Atlantic Area Staff and Units	Chief, Administration Staff
Pacific Area Staff	Chief, Administration Staff
Pacific Area Units, if P or Pcs in rating chain	Chief, Administration Staff
Pacific Area Units, if P or Pcs <u>not</u> in rating chain	Chief, MLC Personnel Division
MLC Staff and Units	Chief, MLC Personnel Division
District Staff and Units	Chief, Administration Division
Headquarters Units	Unit Administrative Division Officer
Administratively Assigned (ADASGN)	Reporting Officer's OER Administrator

- a. For all OERs that must be forwarded to Headquarters for Reviewer action, the Reporting Officer's OER Administrator will perform the duties of OER Administrator.
- b. For officers assigned to other Armed Forces, the OER Administrator will be the staff or unit having ADASGN authority.

2. Responsibilities. The OER Administrator:

- a. Ensures timely OER submission for those officers under their administrative jurisdiction for any part of a reporting period. A tracking system is encouraged. The OER Administrator shall ensure that reserve OERs (original and two copies) are received by Commander (CGPC-rpm) and active duty OERs (original and one copy) are received by Commander (CGPC-opm-3) not later than 45 days after the end of reporting periods.
- b. **Ensures the rating chain is cognizant of Schedule of Active Duty Promotion List (ADPL) and Inactive Duty Promotion List (IDPL) Officer Personnel Boards and Panels, COMDTINST 1401.5 (series).** The OER Administrator shall establish a system to ensure that OERs for officers eligible for promotion and panel action are not delayed, and arrive at Commander (CGPC-opm-3) or Commander (CGPC-rpm) in time to accomplish a thorough quality review.
- c. Ensures completeness and accuracy of OERs. OER Administrators shall maintain a system which verifies that OERs have accounted for all days.

COAST GUARD PERSONNEL MANUAL CHAPTER 10.A.

Ensures that the first report from a new duty station accounts for all days, including departure from a previous unit.

- d. Makes minor administrative corrections without returning an OER to the rating chain.
- e. Conducts an administrative review of the OER. However, the OER Administrator may return an OER to the Reviewer when it contains substantive error; Article 10.A.4.f.

10.A.2.i. Commander, Coast Guard Personnel Command

1. Designation. Commander, Coast Guard Personnel Command has overall responsibilities for the OES. Administrative servicing of OERs is accomplished by Commander (CGPC-rpm) or Commander (CGPC-opm-3). Servicing of an officer's performance record is accomplished by Commander (CGPC-adm-3).
2. Responsibilities. Reserve Personnel Management Division (CGPC-rpm) or Officer Evaluations Branch (CGPC-opm-3):
 - a. Processes OERs into **Direct Access**, an automated tracking system. Ensures that all OERs go through a quality review.
 - b. Corrects OERs containing minor administrative errors.
 - c. Provides final quality control review of OERs containing substantive errors, including "restricted" remarks as outlined in Article 10.A.4.f. Normally, the appropriate member of the original rating chain will return these OERs to the Reviewer for correction or redaction. However, in certain situations, returning an OER through the rating chain could lead to unacceptable delays and prejudice a Reported-on Officer who is being considered by a board or panel. In order to achieve a balance between accuracy and timeliness, certain corrective measures may be taken to expedite validation of OERs, Reviewer comments, OER Replies, and Addenda.
 - d. **Submits validated original OER to CGPC-adm-3 for scanning into the CGPC Military Personnel Data Record (PDR) system.**
 - e. Develops and implements system changes as necessary to maintain a healthy system.
 - f. Maintains all applicable instructions and forms and recommends policy governing the OES.
 - g. Responds to individual and command requests related to OES policy.
 - h. Provides training on the OES, subject to resource availability.

- i. Conducts the required training for civilian employees assigned rating chain responsibilities.
3. Responsibilities. Records Branch (CGPC-adm-3):
- a. Maintains officer records system.
 - b. Responds to individual inquiries and requests related to those records, including missing copies of OERs.
 - c. **Mails original, validated OER to the Reported-on Officer after scanning into the PDR.**

10.A.3. SUBMISSION SCHEDULE

The intent of the submission schedule is for officers with a biennial, annual or semiannual reporting period to be evaluated as closely to those frequencies as possible. While every effort has been made to accommodate possible deviations to the schedule, unusual circumstances may dictate the submission of reports, or not allow their submission, which may be contrary to the intent of the OES.

10.A.3.a. Regular OERs

1. Biennial (on even numbered years), annual or semiannual (Figure 10.A.1.) as of the last day of the month as follows:

GRADE	ADPL	IDPL
Captain	April	April (Annual)
Commander	March	March (Biennial)
Lieutenant Commander	April	April (Biennial)
Lieutenant	May	May (Biennial)
Lieutenant (Junior Grade)	January and July (In zone/above zone promotion board eligible candidates due 30 Jun)	July (Annual)
Ensign	March and September	March (Annual)
Chief Warrant Officer (W4)	April	April (Biennial)
Chief Warrant Officer (W3)	July	July (Biennial)
Chief Warrant Officer (W2)	June	June (Biennial)

- a. A reporting period shall never extend beyond 30 months for biennial reports, 18 months for annual reports or 12 months for semiannual reports.
- b. Annual or semiannual OER submission is optional (waivers not required) if:
 - (1) A regular OER (or a special OER that counts for continuity) was

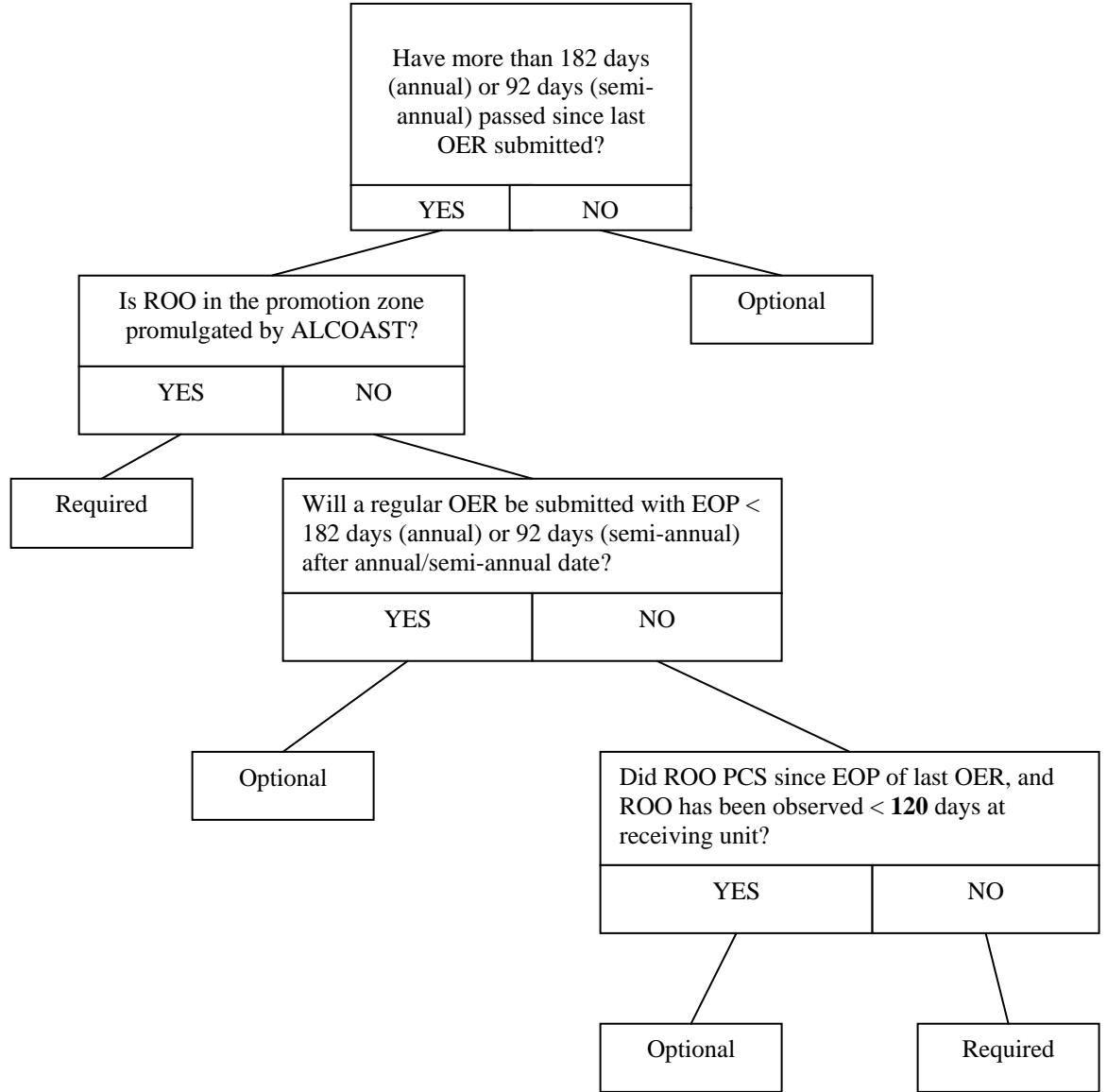
COAST GUARD PERSONNEL MANUAL CHAPTER 10.A.

submitted within 182 days prior to the scheduled submission date for annual reports or 92 days for semiannual reports.

- (2) A regular OER will be submitted within the 182 days following the scheduled due date for annual reports or 92 days for semiannual reports. Exception: Those officers above zone, and in zone, for promotion as specified by ALCGOFF promulgated by Commander (CGPC-opm) shall not delay their regular annual or semiannual OER past the scheduled due date, unless the Reported-on Officer has an approved retirement letter or voluntary resignation on file, and is planning on submitting an OER for continuity purposes only **in accordance with Article 10.A.3.a.5.b.** For officers who meet this criteria, a waiver must be obtained as provided in Article 10.A.3.b.
 - (3) The Reported-on Officer is under Permanent Change of Station (PCS) orders and has been observed at the new unit for less than 120 days. The observations shall be recorded in the next regular OER. (NOTE: The term “observed,” for the purpose of this paragraph only, means on-the-job time, excluding travel, temporary duty not performed in the execution of the officer’s normal duties, leave, rating chain transitions, and hospitalization.)
- c. Reserve biennial or annual OER submission is optional (waivers not required) if:
- (1) A regular OER (or a special or ADSW OER which counts for continuity) was submitted within 6 months prior to the scheduled submission date.
 - (2) A regular OER will be submitted within the following 6 months of the scheduled due date. Exception: Those officers above and in zone for promotion as specified by **ALCGPERSCOM** promulgated by Commander (CGPC-rpm) shall not delay their biennial or annual OER past the scheduled due date, unless the Reported-on Officer has an approved retirement letter or voluntary resignation on file, and is planning on submitting an OER for continuity purposes only in accordance with Article 10.A.3.a.5.b. For those officers who meet this criteria, a waiver must be obtained as provided in Article 10.A.3.b.
 - (3) The Reported-on Officer under PCS orders has been observed at the new unit for less than 6 months. The observations shall be recorded in the next regular OER.

OER FOR ANNUAL/SEMIANNUAL SUBMISSION

10.A.3.a(1)

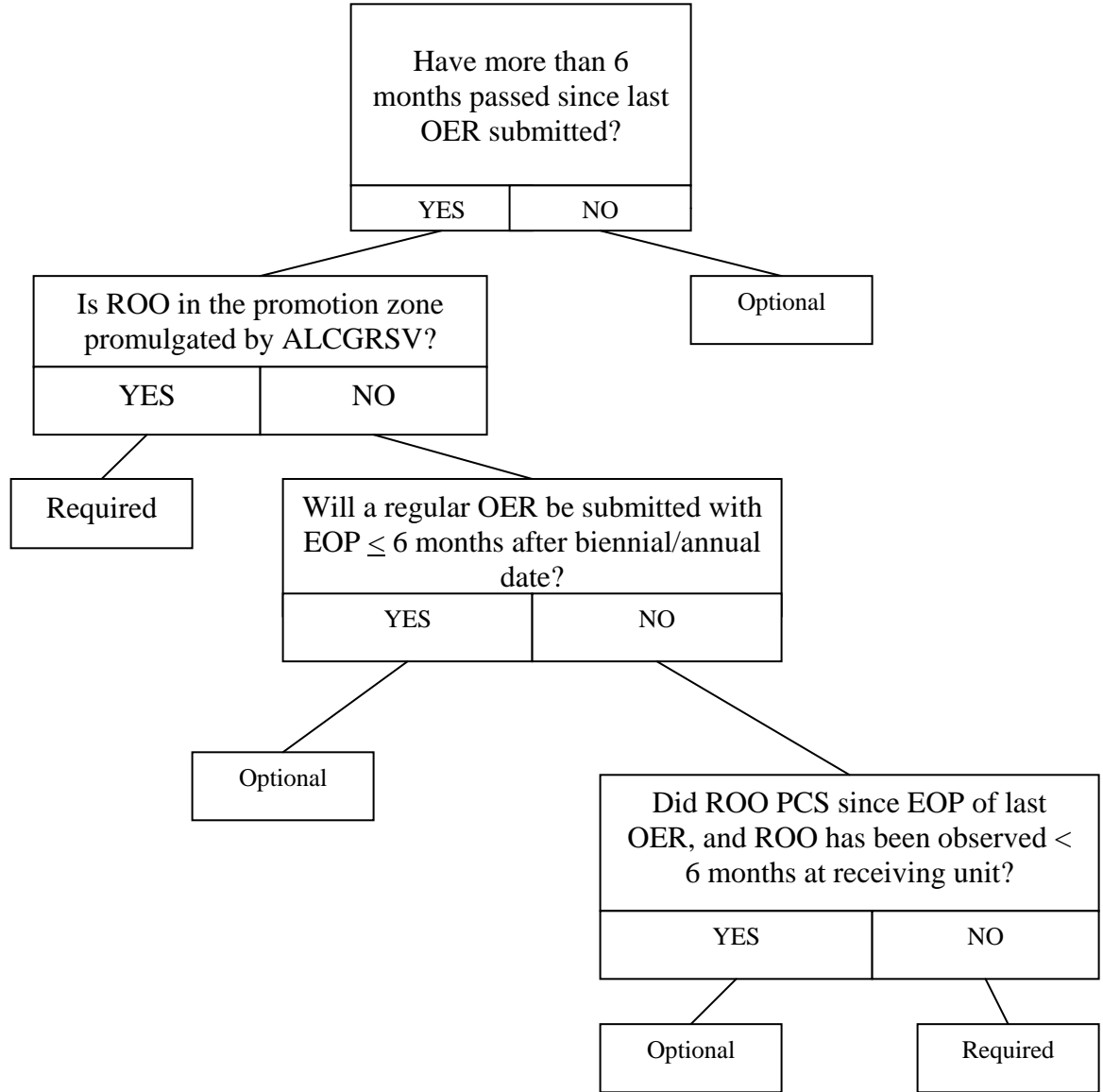


Key:
 ROO = Reported-on Officer
 EOP = End of period

FIGURE 10.A.1

RESERVE OER FOR BIENNIAL/ANNUAL SUBMISSION

10.A.3.a.(1)



Key:
 ROO = Reported-on Officer
 EOP = End of period

FIGURE 10.A.1 Reserve

2. Detachment or change of the Reporting Officer (Figure 10.A.2):

- a. OERs for officers on a biennial submission schedule are required if more than 12 months have elapsed since the ending date of the last regular OER or the date reported present unit, whichever is later.
- b. OERs for officers on an annual submission schedule are required if more than six months (i.e., 182 days) have elapsed since the ending date of the last regular OER or the date reported present unit, whichever is later.
- c. OERs for officers on a semiannual submission schedule are required if more than three months (i.e., 92 days) have elapsed since the ending date of the last regular OER.
- d. OER submission is optional in other situations.

**OER FOR DETACHMENT OR CHANGE OF
REPORTING OFFICER
10.A.3.a(2)**

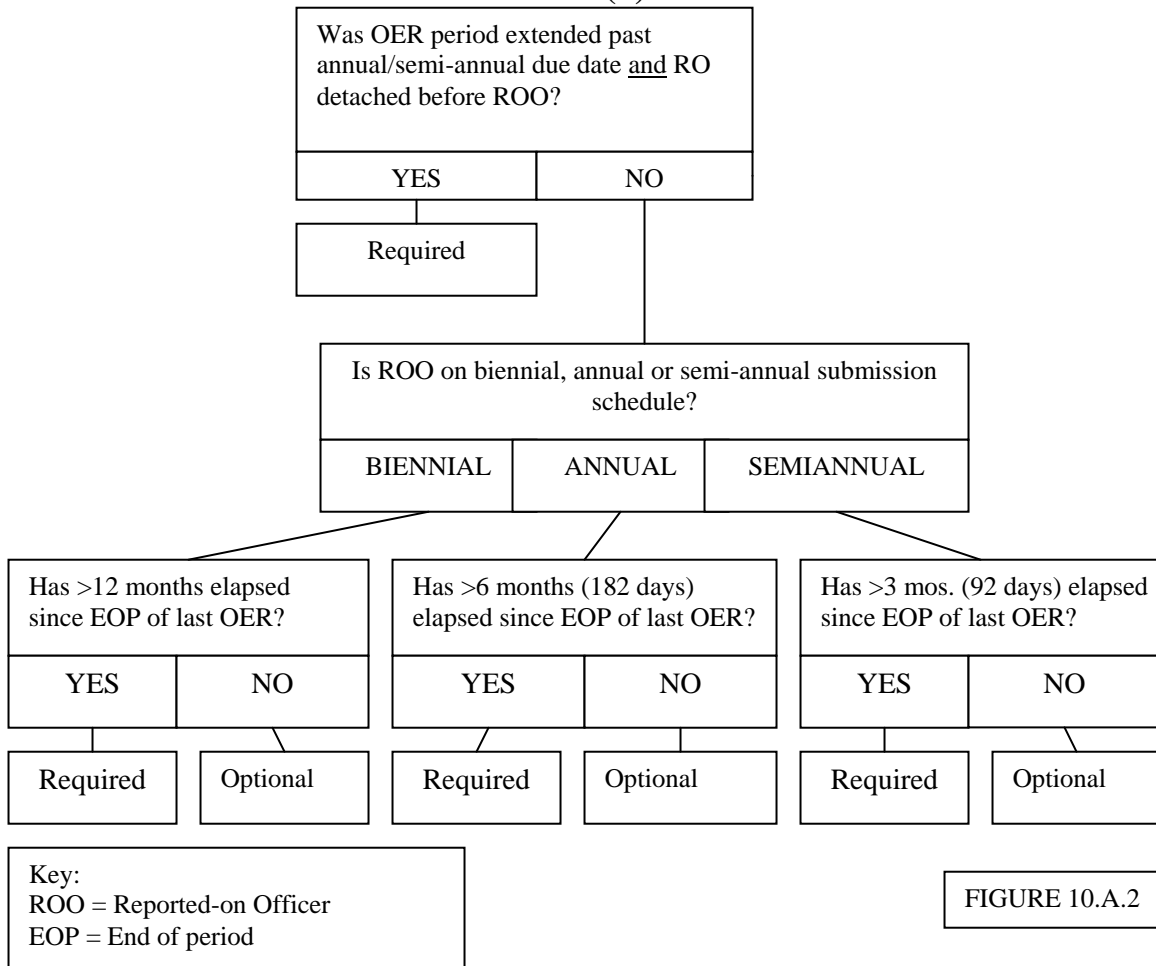
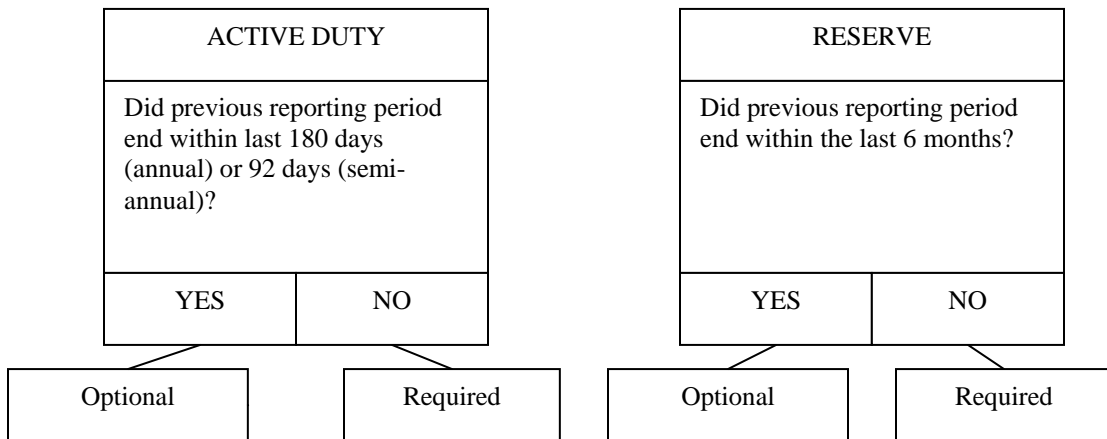


FIGURE 10.A.2

3. Detachment on PCS orders, or separation from the Service of the Reported-on Officer (Figure 10.A.3.):
 - a. OER submission is optional for PCS detachment if the previous regular reporting period ended, or the officer was commissioned, within the last 92 days for officers with semiannual submission schedules, 182 days for officers with annual submission schedules, or the last 6 months for reserve officers. The days between the end of the previous regular OER and the detachment date (or from the date of commissioning through the detachment date) may be reflected as “Days Not Observed, Other” on the first OER from the next unit, with a short explanation in Section 2 (e.g., Detached USCGC DAUNTLESS on 97 01 15).
 - b. For officers separating from the Service, the period of the report shall end on the final day of active service, including days on terminal leave.

**OER FOR DETACHMENT OF REPORTED-ON OFFICER
10.A.3.a(3)**



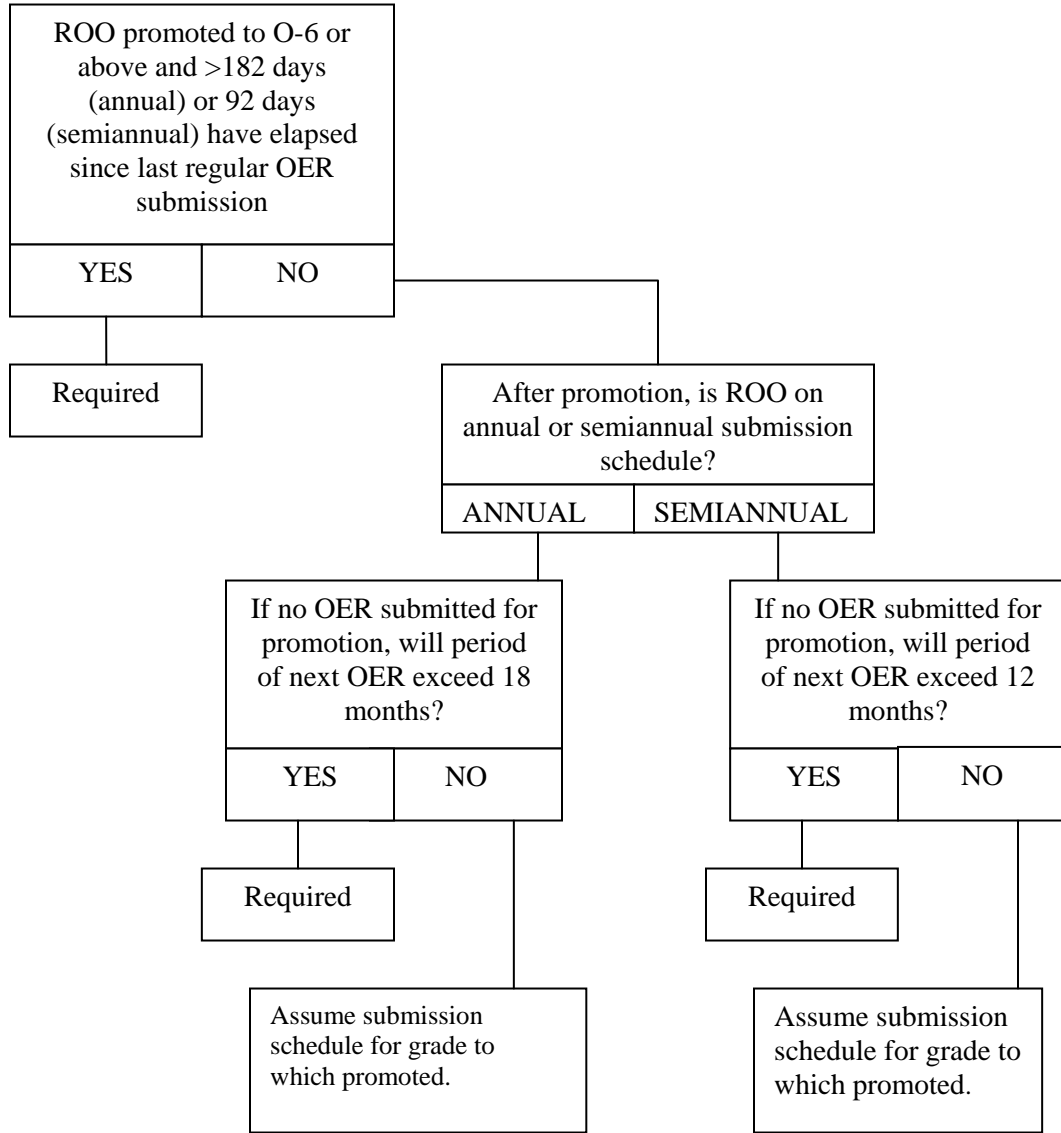
Note: For officers separating from the service, the reporting period shall end on the final day of active service, including days on terminal leave.

FIGURE 10.A.3.

4. Promotion of Officers (Figure 10.A.4.):

- a. Captains selected for promotion to flag grade shall, with the concurrence of their rating chain, submit an OER for continuity purposes only to coincide with their promotion.
- b. Promotion OERs are only required for promotion to captain and for CWO to LT. However, if an OER was completed within 182 days of the promotion date for regular officers or within 6 months for reserve officers, the Reported-on Officer need not submit a promotion OER or a waiver request.
- c. Officers promoted to commander, or below, during a reporting period shall apply the submission criteria for the grade to which promoted to determine when their next OER is due (e.g., O-1 promoted to O-2 on 20 January shall do a 31 January O-2 semiannual OER). Promotion OERs are authorized only if this results in a period of greater than 30 months (biennial cycle), greater than 18 months (annual cycle) or greater than 12 months (semiannual cycle). Example: An O-4 promoted to O-5 during April (11 months since the last O-4 OER) who would not otherwise receive an OER until the following March, providing there are no other anticipated intervening occasions, should do a promotion OER. If the intervening occasion will occur more than 92 days after the promotion date, then Article 10.A.3.b. applies. The Reported-on Officer's grade on the occasion of the "promotion of officer" OER is the grade prior to promotion.
- d. Officers promoted under the CWO to Lieutenant program shall submit a promotion OER. The annual CWO report may be extended up to 182 days to coincide with the LT appointment without Commander (CGPC-opm-3) approval.
- e. Officers who have been frocked shall follow the schedule and exceptions described above for their actual pay grade, not for the grade to which they have been frocked.

**OER FOR PROMOTION OF REPORT-ON OFFICER
10.A.3.a(4)**

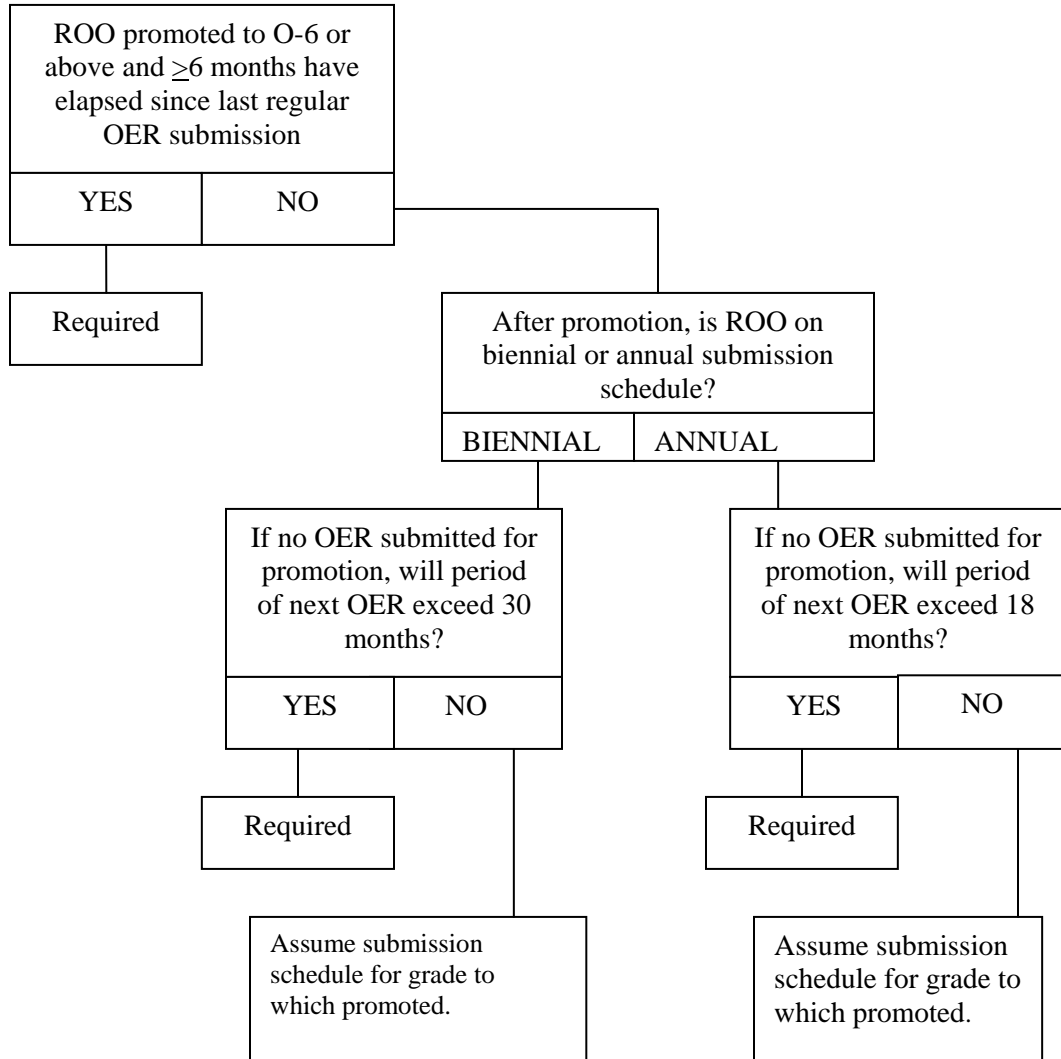


Key:
ROO = Reported-on Officer

Note: Where an OER is required
1) The reporting period ends on the day before the effective date of promotion
2) The Officer's grade is the grade prior to promotion

RESERVE OER FOR PROMOTION OF IDPL REPORTED-ON OFFICER

10.A.3.a.(4)



Key:
ROO = Reported-on Officer

Note: Where an OER is required
1) The reporting period ends on the day before the effective date of promotion
2) The Officer's grade is the grade prior to promotion

Figure 10.A.4. Reserve

5. Reports for Continuity Purposes (Figure 10.A.5) (may be referred to as a Continuity OER). Such reports may be submitted in cases where an OER is required by these instructions, but full documentation is impractical, impossible to obtain, or does not meet officer evaluation system goals.
 - a. **Commander (CGPC-rpm) shall complete a continuity OER for officers assigned to the Individual Ready Reserve (IRR), or the Standby Reserve (Active Status).** The OER shall encompass the entire period the officer was in the IRR. Exception: For officers being considered for promotion during a particular year (even if Reported-on Officer is still in the IRR) a continuity OER shall be submitted and shall not be delayed past the scheduled submission date.
 - (1) **Commander (CGPC-rpm) shall complete or delegate the completion of OER Sections 1, 2, 13, and prepare Section 11, “Reporting Officer Authentication,” for Commander (CGPC-rpm) signature. Commander (CGPC-rpm) may delegate the Reporting Officer signature authority to competently trained staff.** Section 6 (Supervisor Authentication) and Section 12 (Reviewer Authentication) are not used for IRR OERs.
 - (2) Section 2, “Description of Duties,” should read “Submitted for continuity purposes only IAW Article 10.A.3.a.5.a. ROO is in IRR.” The “Not Observed” circle should be filled for all marks assigned with Section 9 (Comparison Scale) left blank.

There is no requirement for officers on the Inactive Status List (ISL) to submit an OER since personnel management goals (promotion, assignment, career development, etc.) of the OES do not apply.

- b. A continuity OER may be submitted under the following conditions:
 - (1) The reporting period is 92 days or fewer or for reserve, is 6 months or fewer and the Supervisor and Reporting Officer have little or no information regarding the Reported-on Officer’s performance or qualities, e.g., separating from the service; Article 10.A.3.a.
 - (2) An officer on a semiannual schedule has an approved retirement or separation (voluntary resignations and discharges only) date within 12 months of the last regular OER submission and has met the expected high standard of performance during the period. Reviewer comments are not required for these reports. Officers requesting reserve commissions or being released from active duty (RELAD) may not apply these criteria.

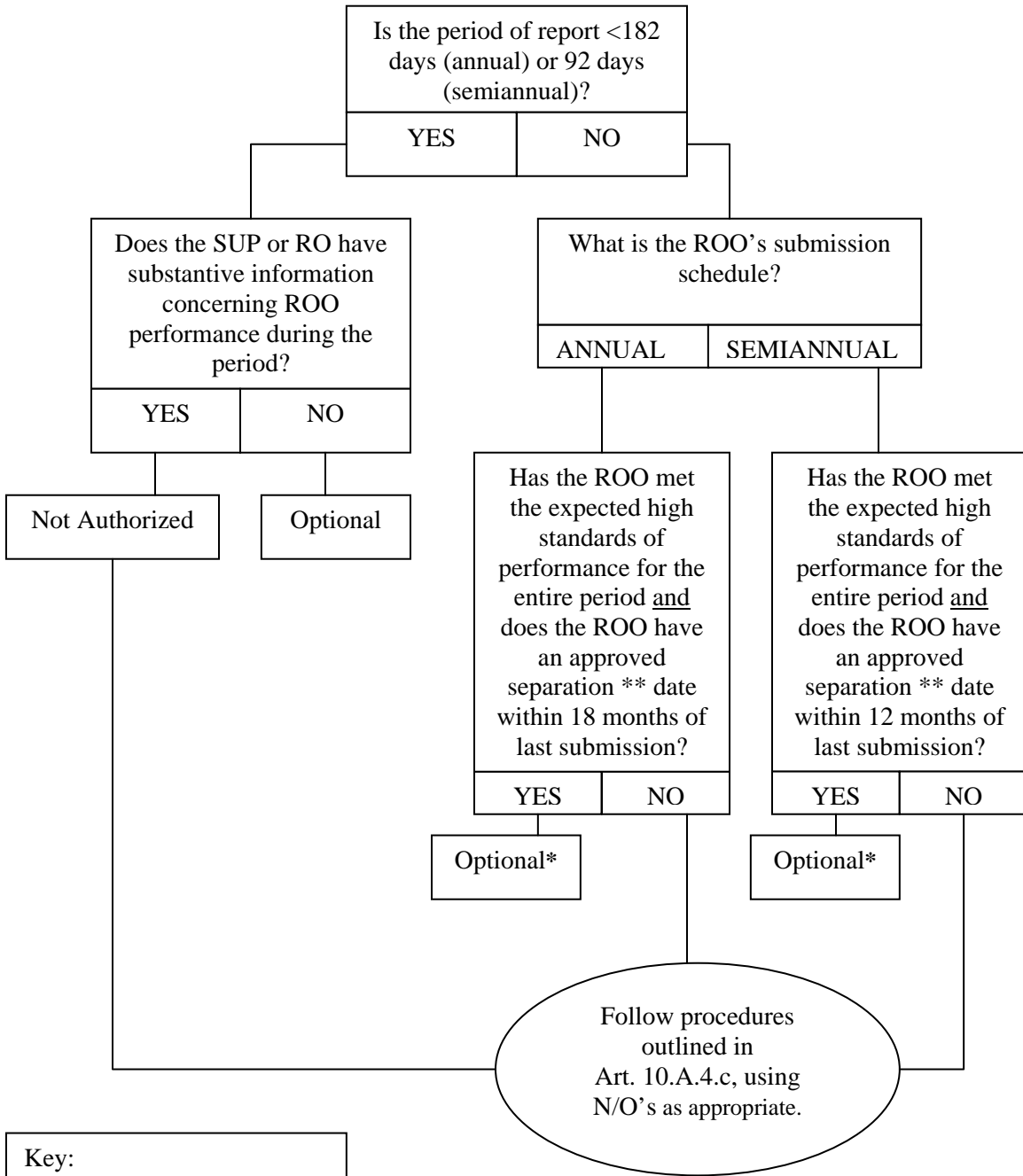
COAST GUARD PERSONNEL MANUAL CHAPTER 10.A.

- (3) An officer on an annual schedule has an approved retirement or separation (voluntary resignations and discharges only) date within 18 months of the last regular OER submission and has met the expected high standard of performance during the period. Reviewer comments are not required for these reports. Officers requesting reserve commissions or being released from active duty (RELAD) may not apply these criteria.
 - (4) An officer on a biennial schedule has an approved retirement or separation date within 30 months of the last regular OER submission and has met the expected high standard of performance during the period.
 - (5) Reserve CWO4 Only. Reserve CWO4s who have at least one fully documented OER, validated and in the Headquarters personnel record, at the CWO4 grade and continue to meet the expected high standard of performance may submit continuity OERs thereafter. In addition to procedures outlined in Article 10.A.3.a.5.d. below, Section 2 of the OER shall include the following statements, "OER is submitted under Article 10.A.3.a.5.b.(5). ROO concurs with decision to submit this continuity OER." Account for IDT Drills and ADT and ADSW days in Section 2 of the OER. Exception: CWO4's considering a direct commission or OCS candidacy may not apply this OER option. CWO4s who do not meet above criteria shall submit fully documented OERs as occasion for report dictates.
 - (6) A waiver shall be obtained from Commander (CGPC-rpm) or Commander (CGPC-opm-3) to extend a continuity only OER upon retirement or separation (voluntary resignations and discharges only) beyond an intervening submission occasion (e.g., detachment of Reporting Officer).
- c. An OER for continuity purposes may be required by Commander (CGPC-opm) or Commander (CGPC-rpm) to implement judicial and administrative adjudications, and when directed by Commander (CGPC).
 - d. When submitting a continuity OER, the Reported-on Officer shall complete Sections 1 and 13. The designated Supervisor shall briefly describe the Reported-on Officer's responsibilities in Section 2 and state the reason the OER is submitted for continuity purposes, e.g., Submitted IAW Article 10.A.3.a.5., member separating on 01 July 2000. All other evaluation areas, including section 9, shall be left blank with "NOT OBSERVED" marked for each dimension. In determining whether a "continuity purposes only" OER is appropriate for officers being separated, consideration should be given to the Reported-on-Officer's opportunity to request a reserve commission at some future date. Lack of a fully documented OER upon separation may adversely affect the Reported-on Officer's ability to later obtain a reserve commission and compete at future reserve officer selection boards. Thus, for officers departing the service for reasons other than retirement, the Supervisor shall

ensure that the Reported-on Officer acknowledges reviewing this paragraph. The Supervisor shall also include the following language in Section 2 of the report: "Officer states that he/ she has reviewed the provisions of Article 10.A.3.a.5., and concurs with the decision to submit this 'continuity purposes only' OER." Where any member of the rating chain, including the Reported-on Officer, has information deemed significant enough to report for the period the OER covers, Article 10.A.4.c. procedures apply.

- e. Requests for waivers of the time restrictions of this article should be addressed to Commander (CGPC-rpm) or Commander (CGPC-opm-3). These waivers may be appropriate if intervening occasions, e.g., change of Reporting Officer, would otherwise necessitate successive continuity reports.
- f. Eligible officers who transition directly to a retired recall status following retirement are required to submit a regular OER rather than an OER for continuity purposes incident to leaving active duty status.**

OER FOR CONTINUITY PURPOSES
10.A.3.a.(5)

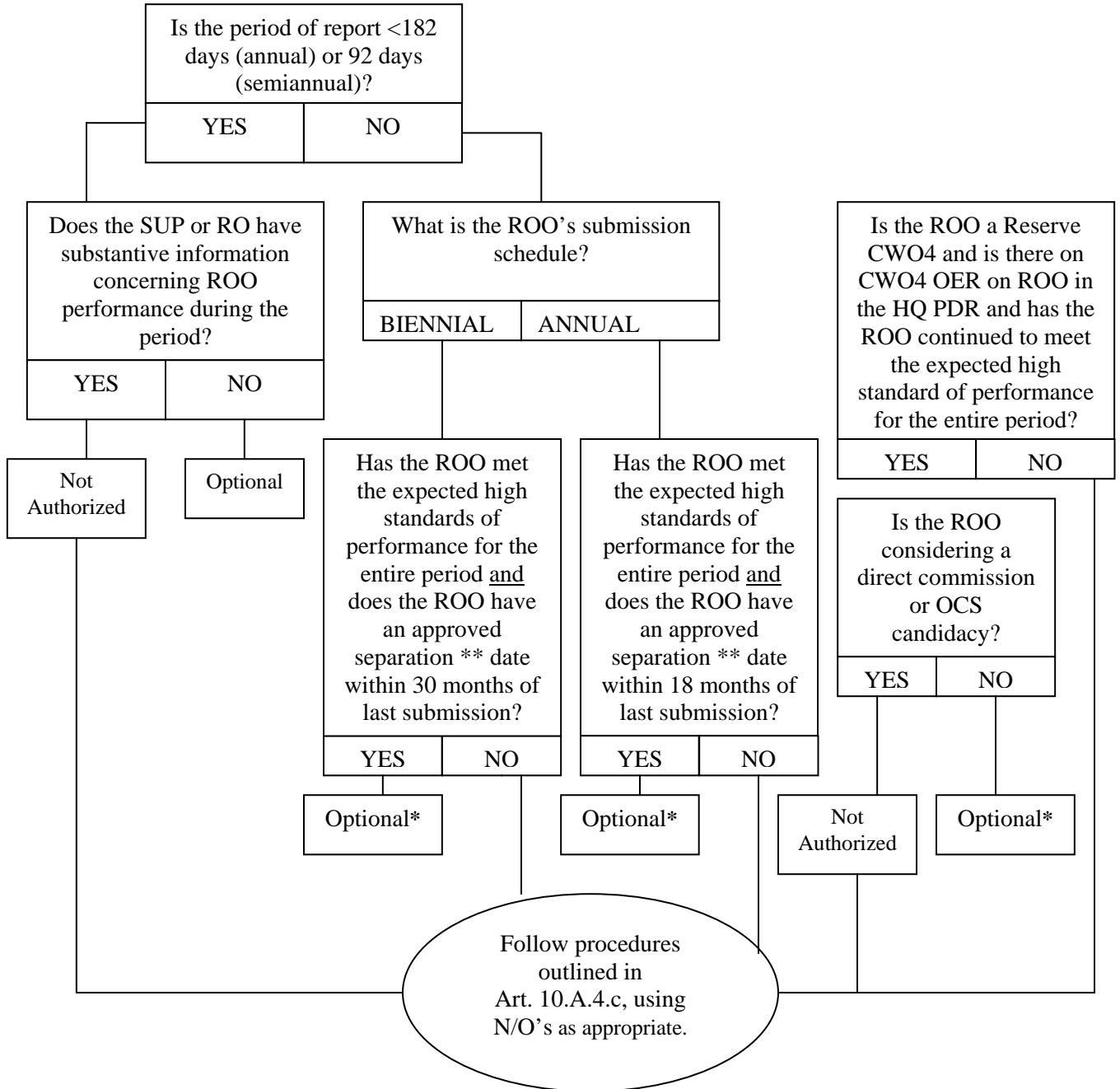


Key:
ROO = Reported-on Officer

* In this instance, a regular OER must be completed if a continuity OER is not.
** Separations include retirement, discharge, and voluntary separations.

Figure 10.A.5

RESERVE OER FOR CONTINUITY PURPOSES
10.A.3.a.(5)



Key:
 ROO = Reported-on Officer
 SUP = Supervisor
 RO = Reporting Officer
 N/O = Not Observed

* In this instance, a regular OER must be completed if a continuity OER is not.
 ** Separations include retirement, discharge, and voluntary separations.

Figure 10.A.5

10.A.3.b. OER Waivers

1. Written requests for waivers to the submission **schedule, including deadlines for derogatory OER addenda and OER replies, shall be submitted by the Reported-on-Officer no later than 45 days prior to the scheduled end of period** to Commander (CGPC-rpm) or Commander (CGPC-opm-3) via the rating chain. Waivers to the normal submission schedule will not be granted without indicating extraordinary circumstances.
2. The Reported-on Officer should identify his or her social security number, phone number, requested period of report, and specific reason(s) for waiver request. If they are in or above zone for promotion, and their intent is to submit a continuity OER upon their retirement or separation, a statement that they understand their record will be incomplete before the board must be included. The welfare of the Reported-on Officer should be considered along with system goals when determining the appropriate time to submit an OER.

10.A.3.c. Exception OERs

1. Special OERs. The Commandant, commanding officers, higher authority within the chain of command and Reporting Officers may direct these reports. The circumstances for the Special OER **must** relate to one of the situations described in subsections a. through e. The authorizing article listed below should be cited in Section 2 of the OER along with a brief description of the circumstances which prompted the OER's submission. [Example: "This OER is submitted under Article 10.A.3.c.(1)(--) due to ..."]. Special OERs present unique preparation problems for members of the rating chain. Therefore, preparers are strongly encouraged to contact Commander (CGPC-rpm) or Commander (CGPC-opm-3) for guidance prior to submitting these exception reports. IAW regular OER submission schedules, Special OERs should be completed by the rating chain and received by CGPC no later than 45 days after the end of the period.
 - a. **A special OER may be completed to document performance notably different from the previous reporting period if deferring the report of performance until the next regular report would preclude documentation to support adequate personnel management decisions, such as selection or reassignment. This report should not normally reflect performance reportable under Article 10.A.3.c.1.b. Notably changed performance is that which results in marks and comments substantially different from the previous reporting period and results in a change in the comparison or rating scale. If an individual has been removed from primary duties (other than relief for cause as prescribed by Article 4.F.6) and early transfer from unit is required, a special OER is required before the Reported-on Officer receives consideration for reassignment. An OER documenting removal from primary duties is derogatory and must be submitted in accordance with Article 10.A.4.h. In both cases, the OER counts for continuity.**
 - b. A special OER is required after an officer is found guilty of a criminal offense and the conduct relates to the Reported-on Officer's performance or any other matter

on which an officer may be evaluated, Article 8.B.4.b. A special OER is also required when an officer receives non-judicial punishment which is not subject to appeal or when the final reviewing authority's action on an investigation includes direction that a Special OER shall be prepared because the evidence established that the officer was criminally culpable. In court-martial cases, the special OER shall be initiated once the convening authority has taken action and the finding of guilty has not been disapproved. **This OER does not count for continuity.**

- (1) The reporting period for this special report will be the time frame during which the officer's conduct prompting the report occurred. The report shall clearly state: (1) the nature of the proceeding prompting the report and the result of the proceeding, e.g. criminal conviction, non-judicial punishment, or final reviewing authority's action directing a special OER due to criminal culpability; (2) any punishment imposed as a result of criminal conviction or non-judicial punishment; and (3) other information as necessary to accurately reflect the performance being evaluated. Information about the proceeding may be included in the report even if the proceeding took place outside of the reporting period. The evaluation shall be limited to those areas affected by such conduct, since all other dimensions will be evaluated in the regular OER. Any dimension which is not evaluated shall be marked "not observed." A Section 9 comparison or rating scale mark and Section 10 comments on the officer's potential are required.
 - (2) If the conduct resulting in the court-martial, non-judicial punishment, or investigation occurs during the current reporting period, a special report is not required if the process is completed, i.e., not subject to further review, by the time that the regular report is due to be submitted for the current period. The basis for the court-martial, non-judicial punishment, or investigation shall be reported in the regular report.
- c. Special OERs may be submitted for officers being considered by selection panels or selection boards for promotion, extension, or continuation if the period of report is at least six months and the OER will arrive at CGPC not later than 45 days before the board/panel convening date. For officers applying to postgraduate school, the period of report shall end on 31 March or 45 days before the application deadline. Reported-on Officers (reserve only) who are on a biennial schedule and are in zone for promotion on the IDPL during an odd numbered year shall complete a Special OER for that year to document all performance since the last regular OER for board consideration. These OERs should not be delayed past the normal submission month (e.g. March for CDRs, April for LCDRs). Extensions will not be granted. **This OER counts for continuity.**
 - d. **Special OERs may be submitted to document significant historical performance or behavior of substance and consequence which was**

unknown when the regular OER was prepared and submitted. This report should not normally reflect performance reportable under Article 10.A.3.c.1.b. The OER should address only the performance dimensions relevant to the special OER since all other performance dimensions will have been addressed in the regular OER. The special OER should be initiated by the original rating chain unless they are unavailable or disqualified. Article 10.A.2.g. applies. The Reviewer must be a flag officer. This OER does not count for continuity.

- e. When specifically directed by another article in this manual, e.g., Article 4.F.6., Relief for Cause. This OER may count for continuity, depending upon the circumstances which prompt its submission.
2. Concurrent OERs. A concurrent OER is an OER submitted in addition to a regular or special OER. The permanent unit's OER is never considered a concurrent report and should not be so identified. A concurrent report is always in addition to a regular or special OER, and thus does not count for continuity. The unit to which the Reported-on Officer is permanently attached is always responsible for ensuring that continuity is maintained with either regular or special OERs. Concurrent reports may be submitted only when the officer is:
 - a. Filling separate or distinct billets or command functions under different commanding officers.
 - b. Filling a billet for which technical control and administrative control are separated, such as senior contracting officers.
 - c. Commanding a unit for which operational control and administrative control are separated, e.g., units assigned to International Ice Patrol, Deep Freeze Operations, etc.
 - d. Commanding a unit with divided operational control.
 - e. Performing temporary assigned duty (TAD) away from a permanent station for a period of at least 60 consecutive days while being observed by a senior other than the regular Reporting Officer, e.g., senior aviator deployed aboard a Coast Guard icebreaker. In this case, the concurrent report normally will be written upon the detachment of the TAD officer and cover only the period of temporary additional duty.

10.A.3.d. Evaluation of Performance while Recalled to Active Duty from Retired Status

1. Because the personnel management goals (promotion, assignment, career development) of the OES don't apply to officers who are recalled to active duty from retired status, there is no mandatory requirement to submit an OER for these officers.

2. Where any member of the rating chain, including the Reported-on Officer, has information deemed significant enough to report for the retired recall period, a regular OER may be submitted and the procedures outlined in Article 10.A.4.c. apply. Such information may be useful for future retired recall decisions regarding the officer. If the decision is made to submit a regular OER for the retired recall period, the following annotation should be made in Section 2 of the OER: "Submitted IAW PERSMAN Article 10.A.3.d."
3. **If service need requires that a retired recall promotion board be convened, eligible officers who declined to submit an optional OER for a previous retired recall period are not permitted to resurrect that exercised option to retroactively submit OERs for consideration by the board.**
4. If circumstances during the retired recall period warrant, a special OER may be submitted if the criteria of Article 10.A.3.c.1. are met.

10.A.3.e. Reserve Specific OERs

1. **Active Duty for Special Work:** This section describes Reserve-specific OER submission rules for officers who are on Active duty for Special Work (ADSW) in support of the Active Component (-AC) or Reserve Component (-RC).
 - a. **Short-Term ADSW (Periods of 180 Days or less).** If the ADSW orders are for 180 days or less, the ADSW performance shall be included in the Reported-On Officer's regular IDPL OER(s) if the ADSW is performed at the Reported-On Officer's permanent IDT/ADT unit. If the Reported-On Officer performs the ADSW at a unit other than the permanent IDT/ADT unit, then Article 10.A.3.c.2.e. concerning temporary assigned duty (TAD) applies and a concurrent OER shall be submitted if the ADSW is for a period of at least 60 consecutive days. If the Reported-On Officer is in the Individual Ready Reserve (IRR) in a non-drilling status prior to reporting to the ADSW assignment, then in all cases (for short-term ADSW periods of any length), a concurrent OER shall be completed by the ADSW rating chain for the period of ADSW only.
 - b. **Long-Term ADSW (Periods of 181 Days or Greater).** If the ADSW orders are for 181 days or greater, a Reserve Officer is removed from his or her SELRES (or IRR) assignment for the duration of the active duty and ADPL submission schedules shall apply; see Chapter 3.B.4. of the Reserve Policy manual, COMDTINST M1001.28 (series) for a description of long-term active duty. If the Reported-On Officer performs the long-term ADSW at a unit other than the previous SELRES/IRR unit (or previous ADSW unit if there is no break in service), then the submission criteria for a PCS transfer shall apply. If

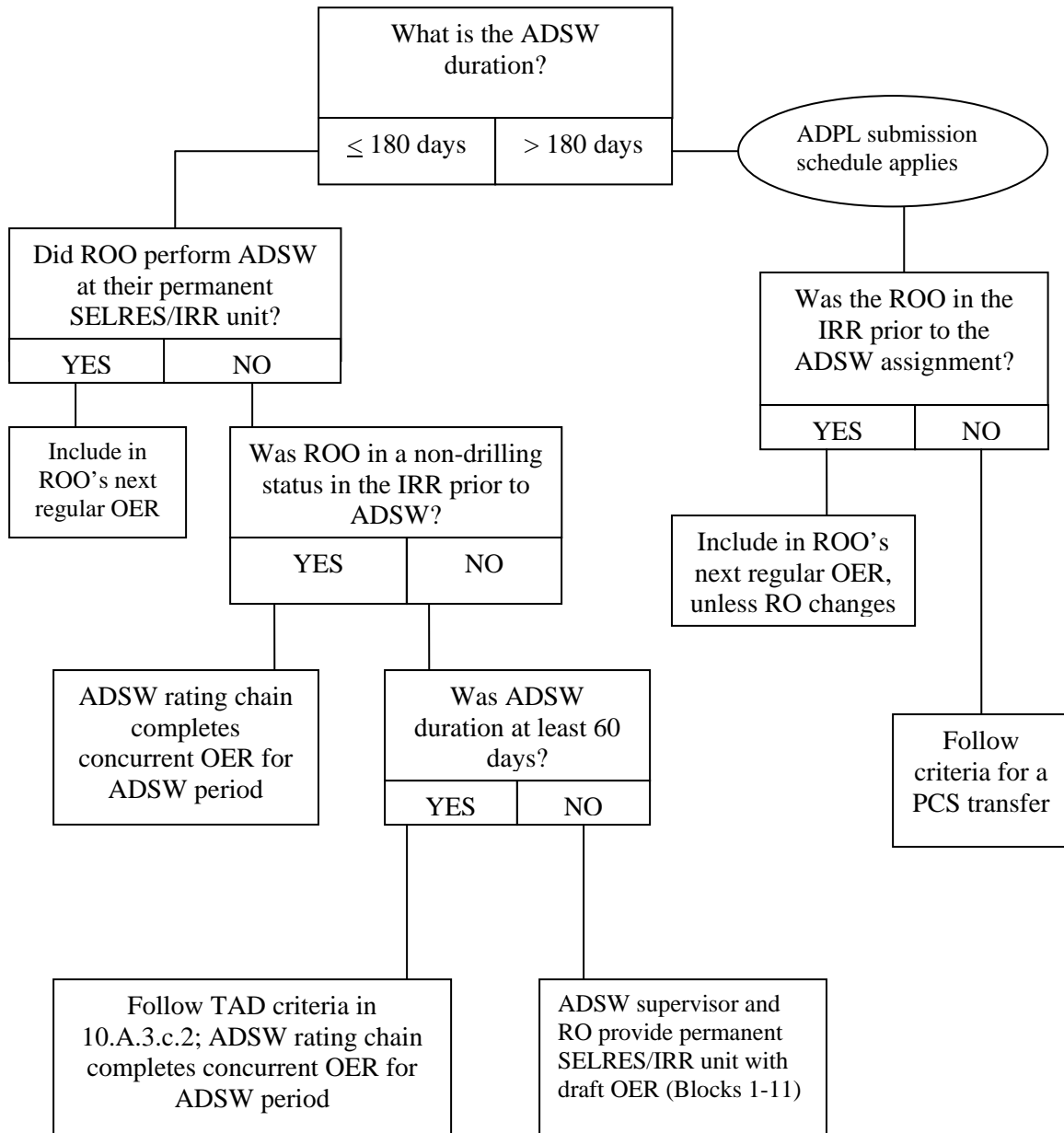
the ADSW is performed at the same unit as the Reported-On Officer's previous SELRES/IRR unit (or previous ADSW unit if there is no break in service), the ADSW performance shall be included in the Reported-On Officer's next regular OER(s), as long as there is no change in the description of duties and reporting officer.

- c. **ADSW With Subsequent EAD Contract.** Reported-On Officers who are on ADSW assignment and are immediately brought on an Extended Active Duty (EAD) contract in the same assignment may defer submitting an OER until their next regular ADPL OER submission date, as long as there is no break in service and no change in the description of duties and reporting officer.
2. **Active Duty Due to Mobilization.** This section describes Reserve-specific OER submission rules for officers who are involuntarily recalled to active duty in support of a contingency. Involuntary recalled reservists on long-term orders are not removed from their SELRES or IRR assignments as are their counterparts on long-term ADSW.
 - a. **Involuntary Recall to AD at Reported-On Officer's SELRES/IRR Unit.** If the Reported-On Officer is involuntarily mobilized to perform active duty of any duration at his or her permanent IDT/ADT unit (or previous ADSW unit if there is no break in service), performance of the mobilization duty shall be included in the officer's regular OER(s). If the Reported-On Officer is in the Individual Ready Reserve (IRR) in a non-drilling status prior to reporting to the mobilization assignment, then in all cases (for involuntary recall of any length), a concurrent OER shall be completed by the mobilization unit's rating chain only for the period of recall to active duty. ADPL submission schedules begin to apply after six months of continuous active duty; IDPL submission schedules commence again upon demobilization.
 - b. **Involuntary Recall to AD at another Unit for Less than 92 Days.** If the Reported-On Officer is mobilized to perform active duty for a period of less than 92 days at a unit other than the SELRES/drilling IRR unit, the supervisor and reporting officer of the mobilization unit is responsible for providing the SELRES/drilling IRR unit with a draft OER Form CG-5310(series) Sections 1-11. The draft may be handwritten and shall include marks and comments (bullet statements may be used) for the period of observation. The mobilization supervisor and reporting officer shall sign the draft OER (no reviewer authentication is required) and forward it to the SELRES/drilling IRR unit supervisors. A copy of the draft OER may be provided to the Reported-On Officer.
 - c. **Involuntary Recall to AD at Another Unit for 92 Days or More.** If the Reported-On Officer is involuntarily mobilized to a unit other than the

permanent IDT/ADT unit, then OER submission criteria for a PCS transfer shall apply; the permanent SELRES unit shall prepare a PCS departure OER if required, and the mobilization OER counts for continuity, even though the member is not removed from his or her SELRES assignment. ADPL submission schedules apply.

RESERVE OER FOR ACTIVE DUTY FOR SPECIAL WORK (ADSW)-IN SUPPORT OF THE ACTIVE COMPONENT (AC) OR RESERVE COMPONENT (RC)

10.A.3.e.1



Key:
 RO = Reporting Officer
 ROO = Reported-On Officer

Figure 10.A.6

10.A.4. Preparation and Processing of Evaluation Reports

10.A.4.a. General

This section describes the procedures for preparing and processing Officer Evaluation Reports (OERs). Members of the rating chain should prepare reports with care. They should ensure that comments are clear, concise, and accurate.

1. The OER is a series of forms, CG-5310, used to document Coast Guard officers' performance and potential.
2. Forward OERs to arrive at Commander, (CGPC-rpm) or Commander (CGPC-opm-3) not later than 45 days following the end of the reporting period.
3. OER form software will default to the desired font type and size. Commands should not try to adjust the default settings. For units that must complete OERs on non-standard terminals, only two fonts shall be used: *Courier* or *Times New Roman*. When using *Courier*, the size of type shall be no smaller than 10 point/12 pitch with not more than six lines per inch. When using *Times New Roman*, the size of type shall be 12 point with not more than five lines per inch.
4. Reporting Officers and Supervisors shall use the same type font throughout their respective sections. Particular care must be taken when adding comments after initial typing to ensure this requirement is met. Reports in all capital letters are prohibited. OER pages shall be one sided only; two-sided OERs are prohibited.
5. **Text** enhancements, (e.g., underlining, boldface, all capital letters) are not allowed.
6. Assign marks in ink. Line out and initial changed marks in ink. Reprint the OER if more than two marks are changed.
7. Acronyms which are uncommon or are specific to a particular Coast Guard program must be clearly defined. This may be effectively accomplished in Section 2 of the OER.
8. Use abbreviations in moderation and only to improve readability and efficiency of the comments. They should also be commonly understood by all Coast Guard officers, e.g., "msg" and "ltr" are common abbreviations; however, "abrvtns" is difficult to interpret.

10.A.4.b. Forms

The following forms shall be used:

GRADE	FORM
Captain	CG-5310D
Commander	CG-5310C
Lieutenant Commander	CG-5310B
Lieutenant	CG-5310B
Lieutenant (jg)	CG-5310A
Ensign	CG-5310A
Warrant Officer	CG-5310A

10.A.4.c. Preparation

1. Section 1—Administrative Data. The Reported-on Officer shall complete all items in this Section, and Section 13 (Return Address), no later than 21 days before the end of the reporting period. The Reported-on Officer is responsible for the accuracy of the information and the appropriate form for the grade.

Items:

- a. NAME—Last and initials only. First names shall not be used.
- b. SOCIAL SECURITY NUMBER—Ensure correct.
- c. GRADE—Two-character pay grade, e.g., W2, O5, as of the end of period date. Frocked officers shall use the report form appropriate to their pay grade, not their frocked grade.
- d. DATE OF RANK—Date of rank in all numerals, e.g., 1997/01/23, for the rank of the officer associated with the period of report.
- e. UNIT—Identification of the unit to which permanently attached, e.g., Commandant (G-LMJ) or USCGC DECISIVE (WMEC-629). For concurrent OERs, use the TAD unit name. For “ADSW” OERs use the ADSW unit name.
- f. ATU-OPFAC.
 - (1) Administrative Target Unit (ATU)—The two-digit numeric designation of the district, area, and headquarters unit to which administratively assigned, e.g., 01 for First District, 98 for Headquarters, 71 for Institute.
 - (2) Operating Facility (OPFAC)—The five-digit numeric designation of the unit to which permanently attached.

COAST GUARD PERSONNEL MANUAL CHAPTER 10.A.

- g. **DAYS NOT OBSERVED**—Enter a two-digit number in all categories representing the days the Reported-on Officer was not present for duty during the evaluation period. Enter as follows:

LV—The number of days leave taken during the evaluation period (i.e., sick leave, regular leave).

Other—TAD not performed in the execution of the officer's normal duties. Hospitalization, PCS, including travel, TEMDU, and proceed time, etc.; Article 10.A.3.a.

- h. **DATE REPORTED**—Indicate the actual date of reporting to the unit specified in f. as shown **in Direct Access**. Enter date in the same format as e. above. **NOTE:** Intra-unit PCS transfers constitute a change in Date Reported Present Unit.

- i. **PERIOD OF REPORT**—The regular reporting period commences the day after the ending date of the previous regular OER or the day of commissioning (for the first OER for newly commissioned officers) and ends on the date of the occasion for the current report. (Note: The period for a promotion OER ends on the day prior to promotion.) Elapsed time between permanent or temporary duty stations (in transit, on leave, hospitalized, etc.) shall be accounted for in the next period of report and noted in section 1.h., Days Not Observed. Enter dates in the same format as e. above. "ADSW" OERs shall include only dates while on ADSW.

- j. **OCCASION FOR REGULAR REPORT**—Article 10.A.3.a. Mark only one box for the occasion which has prompted the OER submission. The occasion is dictated by the end-of-period date in Block 1.j. Leave blank if the report is a Special, Concurrent or ADSW OER.

- k. **EXCEPTION REPORT**—Article 10.A.3.c. Mark special or concurrent, but not both, if the report is not a regular OER.

- l. **DATE SUBMITTED**—The date the Reported-on Officer submits the OER form to the Supervisor. Enter dates in the same format as e. above.

2. Section 2, Description of Duties.

- a. The Supervisor shall write a summary of the most important aspects of Reported-on Officer's job. Primary duties, collateral duties, special projects, key processes, and customer and supplier identities should be included. Use a common sense approach to describe the most important duties in a manner that will be understandable to a reader unfamiliar with the officer's job.
- b. Discuss all major duties assigned to the Reported-on Officer during the

reporting period. **Provide** the officer's primary duty title **in the primary duty block**. If a Reported-on Officer serves at any time during the reporting period under the direction of an officer not his or her primary Supervisor, the Supervisor should attempt to obtain from the secondary supervisor a description of the Reported-on Officer's duties while working for the secondary supervisor (e.g., TAD for less than 60 days; ADSW for 6 months or less). A concurrent OER should normally be completed for TAD greater than 60 days. An "ADSW" OER should normally be completed for ADSW greater than 6 months. The primary Supervisor should note these duties, citing the unit and inclusive dates.

- c. Describe duties and responsibilities to provide an overall understanding of the job. Also note conditions peculiar to the assignment. Include number of people supervised, funds controlled, unit operations or organizational relationships as appropriate. Define highly technical terms. Comments must be clear and concise and confined solely to the space allotted on the form.
- d. Describe the duties and responsibilities for officers with limited opportunity to perform in accordance with Article 10.A.2.b.
- e. Provide a brief reason for submission of Special OERs and Regular OERs submitted for continuity purposes only.
- f. **Provide Reserve time if applicable. The following information should be entered (as shown) in Block 2 as the last part of the "Description of Duties": IDT Drills Scheduled/Attended: XX/XX; ADT: XX Days; ADSW: XX Days. Enter number of drills and days even if zero. The drills/days should reflect the number completed within the period of report, NOT the number completed during the anniversary year.**

3. Section 2, Attachments.

- a. The following paragraphs address items that may or shall be listed as attachments to an OER:
 - (1) Personal military decorations issued in accordance with **Chapter 2** of the Medals and Awards Manual, **COMDTINST M1650.25 (series)**, or other U.S. Armed Services equivalent may be attached to an OER for the period in which received even if the performance cited does not relate to the period. Attach a copy of the award's certificate and citation and list the description (e.g., CG Achievement Medal dated 31 January 2005) in the attachment line in section 2 of the OER.
 - (2) Copies of punitive letters of censure and copies of Court Memorandums shall be referred to and appended to the OER once the proceedings, including reviews and appeal, are completed; Articles 10.A.3.c. and

COAST GUARD PERSONNEL MANUAL CHAPTER 10.A.

10.A.4.f. A written non-punitive censure or copy thereof may not be referred to or appended to the OER (Article 8.E.4.) However, the performance which resulted in the non-punitive censure may be discussed in the OER.

- b. The Reported-on Officer, and other officers or officials outside the Reported-on Officer's normal rating chain, may submit to the Supervisor or Reporting Officer letters, certificates, citations, comments or other reliable documentation pertaining to performance of duty. Supervisors and Reporting Officers may use or cite such reports in the OER "comments" blocks, but shall not attach them to the OER.

4. Sections 3, 4, and 5.

- a. These sections are designed to measure an officer's demonstrated performance and qualities exhibited in three major evaluation areas:

- Performance of Duties
- Communication Skills
- Leadership Skills

Two or more performance dimensions (rating scales) define each evaluation area. Each performance dimension is defined in terms of three performance standards: below standard, standard, or above standard. Supervisors must read each standard carefully. A space for supporting comments follows each set of dimensions.

- b. For each evaluation area, the Supervisor shall review the Reported-on Officer's performance and qualities observed and noted during the reporting period. Then, for each of the performance dimensions, the Supervisor shall carefully read the standards and compare the Reported-on Officer's performance to the level of performance described by the standards. The Supervisor shall take care to compare the officer's performance and qualities against the standards—not to other officers and not to the same officer in a previous reporting period. After determining which block best describes the Reported-on Officer's performance and qualities during the marking period, the Supervisor fills in the appropriate circle on the form in ink.
- c. Where the Supervisor has insufficient information to provide a mark or if observations are believed inadequate to render a judgment, the "not observed" circle shall be used. The reason for the "not observed" must be briefly stated in the "comments" blocks or Section 2.
- d. In the "comments" block following each evaluation area, the Supervisor shall include comments citing specific aspects of the Reported-on Officer's performance and behavior for each mark that deviates from a four. The

Supervisor shall draw on his or her observations, those of any secondary supervisors, and other information accumulated during the reporting period.

- e. Comments should amplify and be consistent with the numerical evaluations. They should identify specific strengths and weaknesses in performance. Comments must be sufficiently specific to paint a succinct picture of the officer's performance and qualities which compares reasonably with the picture defined by the standards marked on the performance dimensions in the evaluation area. Mere repetition or paraphrasing of the standards is not sufficient narrative justification for below or above standard marks.
 - f. When appropriate, specifically address the officer's acquisition (O1 through O4) and demonstration (all officers) of seamanship or airmanship expertise (expert skill or knowledge). The following factors should be considered: easy application of the rules of the road and Federal Aviation Regulations (FARs); understanding of, and facility with relative motion concepts; good "sea sense" and a feel for the forces acting on ships or aircraft; and the ability to translate environmental inputs and mission requirements into consistently correct control applications and leadership decisions. These are some of the factors which indicate potential for future successful operational assignments including operations officer, executive officer, and command. In short, compare and discuss the officer's critical competency requirements with regard to seamanship or airmanship.
 - g. A mark of four represents the expected standard of performance. Additional specific performance observations must be included when an officer has been assigned a mark of five or six to show how they exceeded this high level of performance. Those assigned the superlative mark of seven should have specific comments demonstrating how they exceeded the six standard block.
 - h. Citing weaknesses does not make the OER derogatory unless the OER contains a derogatory mark in accordance with Article 10.A.4.h.
 - i. All comments shall be confined to the space allotted to the Supervisor. No comments shall be continued from one comment block to another.
5. **Section 6, Supervisor Authentication.**
- a. Block a. SIGNATURE—The Supervisor's signature verifies completion of their OES responsibilities and that comments and evaluations are correct. A typed or stamped name is required to clearly identify the Supervisor. Include Service abbreviation if other than Coast Guard.
 - b. Block b. GRADE—Two-character military pay grade, or civilian equivalent (e.g., O6, GS12).

- c. **Block c. EMPLID —Enter Employee ID Number in this block. Non-Coast Guard Supervisor shall enter last four digits of Social Security Number.**
 - d. Block d. TITLE OF POSITION (e.g., Chief, Administration Division; Commanding Officer; Chief, Officer Assignments Branch).
 - e. Block e. DATE—The date the Supervisor submitted the evaluation to the Reporting Officer. Enter in all numerals (e.g., 2000/04/25).
 - f. After signing the OER, the Supervisor gives it to the Reporting Officer, together with the OSF (if used), and any other authorized documentation or information.
6. **Section 7, Reporting Officer Comments.**
- a. This section provides an opportunity for the Reporting Officer to comment on the Supervisor’s evaluation. Although **this section is** not mandatory, Reporting Officers are encouraged to cite other information and observations they may have which would confirm or provide another perspective of the Reported-on Officer’s performance and qualities demonstrated during the reporting period. By doing so, the Reporting Officer gives a more complete picture of the Reported-on Officer's capabilities.
 - b. Section 7 shall not include continuing comments from any other comment block.
7. **Section 8, Personal and Professional Qualities.**
- a. This section measures an officer’s personal and professional qualities. Each performance dimension is defined in terms of three performance standards: below standard, standard, or above standard. The standards are not the same for all forms. Reporting Officers must read each standard carefully. A space for supporting comments follows each set of dimensions.
 - b. For this evaluation area, the Reporting Officer shall review the Reported-on Officer’s performance and qualities observed and noted during the reporting period. Then, for each performance dimension, the Reporting Officer shall carefully read the standards and compare the Reported-on Officer’s performance to the level of performance described by the standards. The Reporting Officer shall take care to compare the officer’s performance and qualities against the standards - not to other officers and not to the same officer in a previous reporting period. After determining which standard best describes the Reported-on Officer’s performance and qualities during the marking period, the Reporting Officer fills in the appropriate circle on the form in ink.
 - c. Where the Reporting Officer has insufficient information to provide a mark or if observations are believed inadequate to render a judgment, the “not

observed” circle shall be used. The reason for the “not observed” must be briefly stated in the “comments” block.

- d. In the “comments” block following this evaluation area, the Reporting Officer shall include comments citing specific aspects of the Reported-on Officer’s performance and behavior for each mark that deviates from a four. The Reporting Officer shall draw on his or her own observations, information provided by the Supervisor, and other information accumulated during the reporting period.
- e. Comments should amplify and be consistent with the numerical evaluations. They should identify specific strengths and weaknesses in performance. Well-written comments must be sufficiently specific to paint a succinct picture of the officer’s performance and qualities which compares reasonably with the picture defined by the standards marked on the performance dimensions in the evaluation area. Mere repetition or paraphrasing of the standards is not sufficient narrative justification for marks.
- f. Citing weaknesses does not make the OER derogatory unless the OER contains a derogatory mark in accordance with Article 10.A.4.h.
- g. All comments shall be confined to the space allotted to the Reporting Officer. No comments shall be continued from one comment block to another.

8. Section 9, Comparison and Rating Scales.

- a. **COMPARISON SCALE (W2 to O2 and O3 to O5 forms):** The Reporting Officer shall fill in the circle that most closely reflects the Reporting Officer’s ranking of the Reported-on Officer relative to all other officers of the same grade the Reporting Officer has known. NOTE: This section represents a relative ranking of the Reported-on Officer, not necessarily a trend of performance. Thus, from period to period, an officer could improve in performance but drop a category.
- b. **RATING SCALE (O5 form):** The Reporting Officer is required to fill in one Comparison Scale mark and one Promotion Scale mark. For the Promotion Scale, the Reporting Officer must select “Recently promoted to O5” or “Already selected to O6”, if either one applies. The Reporting Officer is required to provide the Reviewer with a copy of their most recent rating scale history. Non Coast Guard Reporting Officers are not required to provide a rating scale history. The rating scale history is found in Direct Access as follows: HOME> SELF SERVICE> EMPLOYEE>VIEW>OFF COMPARISON SCALE SUMMARY.

COAST GUARD PERSONNEL MANUAL CHAPTER 10.A.

- c. **RATING SCALE (O6 form):** The Reporting Officer shall fill in the circle that most closely reflects the Reported-on Officer's performance in consideration of information contained in the OER.
- d. No specific comments are required to support the Reporting Officer's judgment in this section. However, a mark other than in the center three circles is strengthened considerably if there are comments in the report from which one could reasonably draw a conclusion why this particular officer has been identified as different from the majority of officers of this grade. A mark of "unsatisfactory" requires compliance with Article 10.A.4.h.
- e. No mark need be entered if there were insufficient opportunities to make a judgment. In this case the Reporting Officer should indicate so with a short statement in Section 10.

9. Section 10, Potential.

- a. The Reporting Officer shall comment on the Reported-on Officer's potential for greater leadership roles and responsibilities in the Coast Guard. These comments shall be limited to performance or conduct demonstrated during the reporting period.
- b. Comments in this section reflect the judgment of the Reporting Officer and may include, but are not limited to, the following:
 - Qualification to assume the duties of the next grade.
 - Specialties or types of assignment, such as command, for which the Reported-on Officer is qualified or shows aptitude.
 - Recommendations for selection to a senior service school.
 - Special talents or skills (or lack of) such as military readiness and warfare skills, seamanship or airmanship, etc., as applicable.
- c. Comments shall be confined to the allotted space on the form.

10. Section 11, Reporting Officer Authentication.

- a. Block a. SIGNATURE—The Reporting Officer's signature verifies completion of OES responsibilities and that comments and assigned marks are correct. A typed or stamped name is required to clearly identify the Reporting Officer. Include Service abbreviation if other than Coast Guard.
- b. Block b. GRADE—Two-character military pay grade, or civilian equivalent (e.g., O6, GS14).

- c. **Block c. EMPLID—Enter Employee ID Number. Non-Coast Guard Reporting Officer shall enter last four digits of Social Security Number.**
- d. Block d. TITLE OF POSITION (e.g., Chief, Administration Division; Commanding Officer; Chief, Officer Management Branch).
- e. Block e. DATE—The date the Reporting Officer submitted the evaluation to the Reviewing Officer. Because this date indicates when OES responsibilities were completed, a date preceding the end-of-the-period is prohibited. Enter date using a numeric format (e.g., 2000/11/22).

11. Section 12, Reviewer Authentication.

- a. When adding comments, the Reviewer checks the “Comments Attached” box in Block a.
- b. Block b. SIGNATURE—The Reviewer’s signature verifies that the OER has been completed properly and in accordance with these instructions. A typed or stamped name is required to clearly identify the Reviewer.
- c. Block c. GRADE—Two-character military pay grade or civilian equivalent (e.g., O6, SES1).
- d. **Block d. EMPLID—Enter Employee ID Number.**
- e. Block e. TITLE OF POSITION (e.g., Chief, Administration Division; Commanding Officer; Chief, Officer Personnel Management Division).
- f. Block f. DATE—The date the Reviewer completed the review and forwarded the OER to the OER Administrator. Because this date indicates when OES responsibilities were completed, a date preceding the end-of-period is prohibited. Enter date using a numeric format (e.g., 2000/11/22).
- g. On form CG-5315 (series), the Reviewer may comment on the Reported-on Officer’s performance, qualities, potential, or value to the Coast Guard if these areas need to be expanded or explained further. Comments and a comparison/rating scale mark are required if the Reporting Officer is not a Coast Guard Officer, Coast Guard Senior Executive Service (SES) member, or the USPHS flag officer serving as **Director of Health and Safety (CG-11)**; Article 10.A.2.f.2.b. The Reviewer may explain or reconcile discrepancies or conflicts reflected in the completed report, if these inconsistencies cannot be resolved by returning the report to the concerned rating chain members or through personal discussions. Additionally, the Reviewer shall limit comments to performance or behavior observed during the reporting period and/or discussion of the Reported-on Officer’s potential.

COAST GUARD PERSONNEL MANUAL CHAPTER 10.A.

- h. The Reviewer shall forward the completed report, together with any authorized attachments, to the appropriate OER Administrator.
- 12. Section 13, Return Address. The Reported-on Officer provides the home address to which the official copy of the OER will be returned when the original is filed in the officer's record. Use of this page is mandatory for return address purposes; however, the checklist is optional. If Reported-on Officer is in the process of a PCS move, the new home address may be used or the address of a relative/friend.
- 13. Section 14, OER Administrator Review. Use of this block by OER Administrators is optional.
- 14. Validation. **The validated, original OER will be mailed to the Reported-on Officer by CGPC-adm-3.**

10.A.4.d. Format for Reviewer Comments

- 1. Reviewers desiring to attach comments to the OER shall restrict their comments to a maximum of one page of form CG-5315 (series) or one single-spaced page (8½" x 11") typed on one side with no enclosures. The comparison scale is not to be completed unless the Reviewer comments are mandatory Article 10.A.4.c.11.g.
- 2. When form CG-5315 is not used, Reviewer comments shall be formatted as follows:
 - a. NAME/RANK/SSN OF REPORTED-ON OFFICER.
 - b. PERIOD OF REPORT.
 - c. REVIEWER COMMENTS:
 - d. Add comparison or rating scale if required by Article 10.A.2.f.
 - e. Following the last line of comments the Reviewer shall sign as below:

Signature/Date
Name: Rank: (typed)
Reviewer

- 3. Reviewer comments should be stapled to the back of the OER.

10.A.4.e. OER Administrator

- 1. After the OER Administrator has processed the OER, the original and two photocopies and any authorized attachments will be mailed directly to Commander (CGPC-rpm) for reserve OERs or the original and one photocopy of the OER and any authorized attachments will be mailed directly to Commander

(CGPC-opm-3) for active duty OERs to arrive not later than 45 days after the end of the reporting period; Article 10.A.2.f.

2. Mail OERs in double envelopes with the inner envelope marked "Officer Evaluation Reports - For Official Use Only," unless mailed directly to either a rating chain member, Commander (CGPC-rpm) or Commander (CGPC-opm-3). A double envelope is required if the OER is mailed through any chain of command or via any addressee.

10.A.4.f. Restrictions

Members of the rating chain shall not:

1. Mention the officer's conduct is the subject of a judicial, administrative, or investigative proceeding, including criminal and non-judicial punishment proceedings under the Uniform Code of Military Justice, civilian criminal proceedings, PRRB, CGBCMR, or any other investigation (including discrimination investigations) except as provided in Article 10.A.3.c. Referring to the fact conduct was the subject of a proceeding of a type described above is also permissible when necessary to respond to issues regarding that proceeding first raised by an officer in a reply under Article 10.A.4.g. These restrictions do not preclude comments on the conduct that is the subject of the proceeding. They only prohibit reference to the proceeding itself.
2. Consider or evaluate the performance of any officer as a member of court-martial, or give a less favorable evaluation to any defense counsel because of the zeal with which they represented an accused. Such evaluations are prohibited by the Manual for Courts-Martial, M.C.M. 104 (b) (1). This is not intended to preclude the accurate evaluation of, and comment on, counsels' advocacy skills (e.g., trial preparation, organization, logical analysis, writing ability, oral advocacy, direct or cross examination, handling of evidence, use of expert witnesses or demonstrative evidence, etc.) displayed in a court-martial setting. However, in commenting on such performance, whether favorable or unfavorable, no reference will be made to the name, case number, or final result (acquittal, conviction, or sentence).
3. Mention or allude to the fact that the Reported-on Officer was not selected by a board or panel (e.g., references to non-voluntary retirement or separation).
4. Mention any PRRB or CG BCMR application or decision.
5. Mention any medical or psychological conditions, whether factual or speculative. Restriction applies to Reported-on Officer and family members. The mention of NFFD status is prohibited.
6. Mention pregnancy. Restriction applies to Reported-on Officer and family members.

7. Expressly evaluate, compare, or emphasize gender, religion, color, race or ethnic background.
8. Place emphasis upon a third party by gender, religion, color, race, or ethnic background (e.g., Catholic lay minister wrote award recommendation for African-American civilian). Although there is no restriction on naming third parties, rating chains should realize it is much easier to reconcile titles with positions of authority rather than correlating performance with proper names.
9. Refer to the Reported-on Officer by first name.
10. Refer to Reported-on Officer's marital or family status.
11. Discuss Reported-on Officer's performance or conduct which occurred outside the reporting period.
12. Provide comments, attachments or citations which include information subject to a security classification. Evaluations of officers in billets dealing with classified national security issues should characterize performance in a manner which captures the essence of actions and their impact as specifically as possible without raising the classification above the UNCLAS level.

10.A.4.g. Reported-on Officer Reply

1. The Reported-on Officer may reply to any OER regardless of its content and have this reply filed with the OER. Replies provide an opportunity for the Reported-on Officer to express a view of performance which may differ from that of a rating official.
2. Comments should be performance-oriented, either addressing performance not contained in the OER or amplifying the reported performance. Restrictions outlined in Article 10.A.4.f. apply. Comments pertaining strictly to interpersonal relations or a personal opinion of the abilities or qualities of a rating chain member are not permitted.
3. Reported-on Officer replies must be submitted to Commander (CGPC-rpm) or Commander (CGPC-opm-3) via the original rating chain. Replies shall not be forwarded through the OER Administrator. If the whereabouts of the original rating chain members are unknown, submit the original and one copy directly to Commander (CGPC-rpm) or Commander (CGPC-opm-3) who will forward the reply to the Supervisor, Reporting Officer, and Reviewer.
4. Replies must be submitted to the Supervisor within **21** days from receipt of the **original, validated OER** from Commander (CGPC-opm) or Commander (CGPC-rpm). Replies based upon receipt of local copies will not be accepted.
5. The OER Reply should be processed by the rating chain to arrive at Commander (CGPC-rpm) or Commander (CGPC-opm-3) not later than 30 days after the date

the Reply was submitted to the Supervisor.

6. The Reported-on Officer shall inform Commander (CGPC-rpm) or Commander (CGPC-opm-3) directly by written communication (E-mail is acceptable) if the **original, validated OER** Reply has not been received 60 days from the date the Reply was submitted to the Supervisor.
7. Reported-on Officer replies do not constitute a request to correct a record. An officer who believes his or her OER contains a major administrative or substantive error should follow the procedures to correct military records as outlined in Article 10.A.7. This includes requests to have the OER, or a part thereof, removed from the record. Members of the rating chain who, in their review of a Reported-on Officer's reply, concur with the Reported-on Officer that an error may be present in the OER, shall return the reply to the Reported-on Officer and assist that officer in following Article 10.A.7. procedures.
8. Format for replies:

Date: (Submitted to Supervisor)

Signature

From: (RANK, NAME, USCG/USCGR)

To: Commander, Coast Guard Personnel Command (opm-3)

Thru: (1) (Original Supervisor by name)

(2) (Original Reporting Officer by name)

(3) (Original Reviewer by name)

Subj: OER REPLY

Ref: (a) Personnel Manual, COMDTINST M1000.6 (series)

1. As authorized by reference (a), I request the below reply be filed with my evaluation report for the period (Year/Month/Day) to (Year/Month/Day).

#

9. Reported-on Officers shall limit their replies to a maximum of two single-spaced pages (8½" x 11") typed on one side with no enclosures. Each rating chain member responding to the reply shall limit that response to a maximum of one single-spaced page (8½" x 11") typed on one side with no enclosures. If a rating chain member elects not to respond to the reply, he or she shall initial and date in the thru block of the Reply, and forward through the rating chain.
10. Any rating chain member who, upon reviewing a Reported-on Officer's reply, finds reason to concur that an error of fact may be present in the OER shall comment in their response and assist the officer in following the records correction procedures in Article 10.A.7.

10.A.4.h. Derogatory Reports

1. Definition. Derogatory reports are OERs that indicate the Reported-on Officer has failed in the accomplishment of assigned duties. Derogatory reports are only those OERs which:
 - a. Contain a numerical mark of one in any performance dimension, or
 - b. Contain an “unsatisfactory” mark by the Reporting Officer in section 9.
 - c. Documents adverse performance or conduct which results in the removal of a member from his or her primary duty or position.
2. Processing. Derogatory OERs are processed as follows:
 - a. The Reporting Officer shall provide a copy (authenticated through Section 11) to the Reported-on Officer requesting that an addendum be prepared. The Reported-on Officer is not required to prepare an addendum. The Reported-on Officer’s addendum does not constitute an official request for correction of a record but provides the Reported-on Officer an opportunity to explain the failure or provide their views of the performance in question. Commenting or declining comment does not preclude the Reported-on Officer from an official request for correction of the record under Article 10.A.7. or submitting an OER Reply under Article 10.A.4.g.
 - b. After completing the addendum, the Reported-on-Officer shall forward the OER along with the addendum to the Reporting Officer. The Supervisor and the Reporting Officer shall be afforded the opportunity to address the Reported-on Officer’s addendum. In all cases, the rating officials shall each endorse the addendum by signature. The Reporting Officer will then forward the OER and attachments to the Reviewer.
 - c. If the Reported-on Officer declines to make an addendum they shall so indicate by attaching the following statement: “I am aware of the contents of the performance report and decline comment.” An addendum by the Reported-on Officer must be made within 14 days of receipt of the OER unless an extension is specifically requested from Commander (CGPC-rpm) or Commander (CGPC-opm-3). If the Reported-on Officer fails to provide either an addendum or the above statement within 14 days, the Reporting Officer shall forward the OER to the Reviewer noting that an addendum was solicited and not received. In such cases, the Reviewer shall prepare a Reviewer Attachment specifically stating that an addendum was solicited but not received.
 - d. The Reviewer shall ensure that the evaluation of the Reported-on Officer is consistent and that the derogatory information is substantiated. If the Reviewer finds otherwise, he or she shall return the report to the Reporting Officer for additional information and/or clarifying comments. Any

substantive changes to the OER require its return to the Reported-on Officer to provide another 14-day opportunity for the Reported-on Officer to revise the addendum.

- e. Since the above procedure does not constitute a request for correction of the record, the Reported-on Officer shall limit the addendum to a maximum of two single-spaced pages (8½” x 11”) typed on one side with no enclosures. Rating chain members, addressing the Reported-on officer’s addendum, shall each limit their comments to a maximum of one single-spaced page (8½” x 11”) typed on one side with no enclosures.

10.A.4.i. Format for Addendum

1. Reported-on Officers and members of the rating chain shall each identify their attachments in the format below:
 - a. NAME/RANK/SSN OF REPORTED-ON OFFICER.
 - b. PERIOD OF REPORT.
 - c. REPORTED-ON OFFICER/SUPERVISOR/REPORTING OFFICER/REVIEWER COMMENTS:
 - d. Following the last line of comments the rating chain shall sign as below:

Signature/Date
Name: Rank: (typed)
Rating chain designation

2. The addendum and attachments should be stapled to the back of the OER before submission to the OER Administrator.

10.A.4.j. Review of OERs at Coast Guard Personnel Command

1. OERs sent to Coast Guard Personnel Command by OER Administrators are received by Commander (CGPC-rpm), Reserve Personnel Management Division or Commander (CGPC-opm-3), Officer Evaluations Branch.
2. Commander (CGPC-rpm) or Commander (CGPC-opm) reviews OERs for substantive errors. Particular attention is given to inconsistencies between the numerical evaluations and written comments. The review is not intended to question a rating official’s judgment about a subordinate’s performance, but to ensure OERs have been prepared in accordance with OES guidelines.
3. Reports found unacceptable are returned to the Reporting Officer, via the Reviewer, with a letter identifying areas for correction. When corrected by the appropriate member(s) of the rating chain, OERs are returned to Commander (CGPC-rpm) or Commander (CGPC-opm-3) via the rating chain within 30 days.

4. **After an OER has been validated, Commander (CGPC-rpm) or Commander (CGPC-opm-3) will forward the original, stamped OER to CGPC-adm-3 for scanning into the Military Personnel Data Record (PDR) system. CGPC-adm-3 will then mail the original, validated OER to the Reported-on Officer.**

10.A.4.k. Correction of OERs

1. Comments in the OER must be sufficiently specific to present a complete picture of the Reported-on Officer's performance and qualities during the period. They should be both reasonably consistent with the numerical marks assigned and justify those marks which deviate from a four. On those marks indicated by Commander (CGPC-rpm) or Commander (CGPC-opm-3) as not being supported, the Rating chain should either provide additional narrative support reflecting specific performance observations or adjust the marks to the information already provided.
2. Administrative Remarks:
 - a. Marks and comments may be changed only by the original Supervisor and Reporting Officer.
 - b. Comments must be confined to the allotted space on the form. The Supervisor's comments must be confined to Sections 2-5 and the Reporting Officer's to Sections 7-8 and Section 10. Only the Reviewer may add a comment sheet in compliance with Article 10.A.4.d.
 - c. All changes to the original OER should be initialed.
 - d. The dates in Blocks 6.e., 11.e., and 12.f. should be adjusted to reflect the date that the necessary changes and reviews were actually made.
 - e. A new OER form should be used if the corrections are extensive. A new form is required if more than two marks are changed or a different size or style of type is used for additional comments. The date submitted (Block 1.1.) should not be changed.
 - f. The revised OER should be returned via the Reviewer, not the OER Administrator.

10.A.5. Preparation and Use of the Duty under Instruction (DUINS) OER

10.A.5.a. General

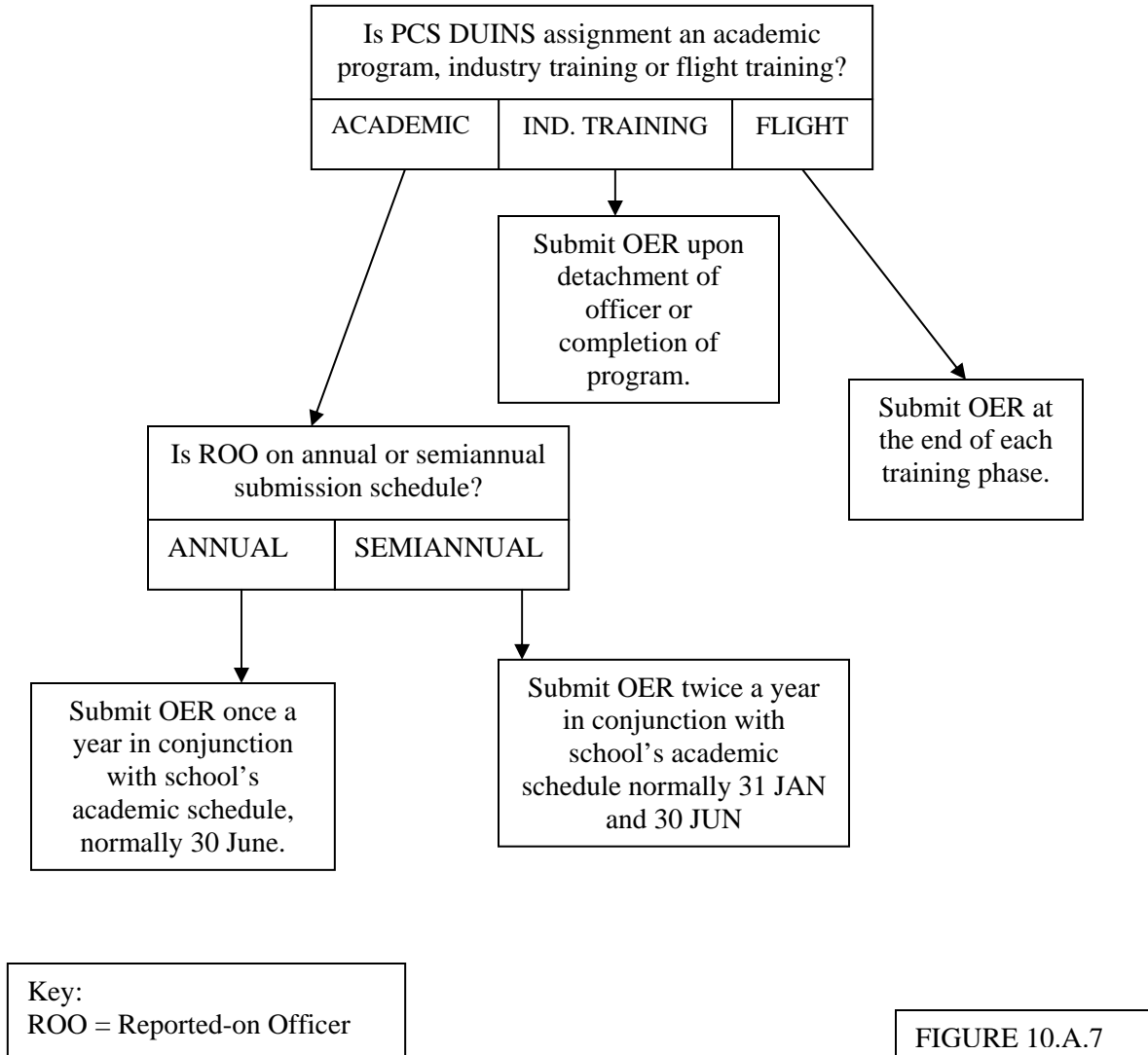
This section describes the procedures for preparing and processing Duty Under Instruction (DUINS) Officer Evaluation Reports (OERs).

1. The OER (CG-5310 (series)) submission schedule for officers assigned to DUINS shall be as follows:
 - a. When a Reported-on Officer is assigned PCS duty under instruction to a civilian institution, Naval Post Graduate School (NPS) Monterey, or an Armed Forces School (Service or senior Service), OER submission will be coordinated with routine breaks in the school's academic schedule. For lieutenants (junior grade) and below, at a minimum OERs shall be submitted twice a year. For lieutenants and above, at a minimum OERs shall be submitted once a year.
 - b. When a Reported-on Officer is assigned PCS duty under instruction to industry training, OERs shall be submitted upon detachment of the officer or completion of the program.
 - c. When a Reported-on Officer is assigned PCS duty under instruction to Flight Training, OERs shall be submitted at the end of each training phase.
 - d. When a Reported-on Officer is assigned PCS duty under instruction and performing duty as an intern or trainee at a Coast Guard unit (e.g., Law student, legal staff intern), a concurrent OER may be submitted for a period of greater than 14 days. This concurrent OER provides an opportunity for DUINS students to document performance and is an exception to the guidelines provided in Article 10.A.3.c.2.
2. Use the DUINS flowchart (Figure 10.A.7.) for general guidance when submitting a DUINS OER.

10.A.5.b. Designation of Rating Chain Members

1. For Reported-on Officers assigned PCS duty under instruction to a civilian institution, industry training, or to NPS Monterey, rating officials will be individuals within the appropriate program managing office.
2. For Reported-on Officers assigned PCS to duty under instruction to Service schools such as flight training, Naval War College (command and staff), AFSC, etc., the host Service's chain of command will function as the Supervisor and Reporting Officer. The Reviewer will be either the Coast Guard liaison officer (if any) or an individual within the appropriate program managing office.
3. For officers assigned PCS to duty under instruction to **Senior** Service Schools, e.g., Air War College, Naval War College, National War College, or **Brookings Institute**, etc., the host Command's chain of command will function as the Supervisor and Reporting Officer. The Reviewer shall be a Coast Guard officer in the grade of captain or above from the appropriate program managing office.

**OER FOR DUTY UNDER INSTRUCTION (DUINS)
10.A.5.a(1)**



10.A.5.c. Preparation

1. Section 1—Administrative Data. The Reported-on Officer will complete all items in this Section and Section 13 (Return Address). The Reported-on Officer is responsible for the accuracy of the information and the appropriate form for the grade.

Items:

- a. NAME—Last and initials only.
- b. SOCIAL SECURITY NUMBER—Ensure correct.
- c. GRADE—Two-character pay grade (e.g., W2, O5) as of the end of period date. Froked officers shall use the report form appropriate to their pay grade, not their froked grade.
- d. DATE OF RANK—Date of rank in all numerals (e.g., 1997/01/23) for the rank of the officer associated with the period of report.
- e. UNIT—The name of school, college, or university being attended or designation of industry training.
- f. ADMINISTRATIVE TARGET UNIT (ATU)—OPERATING FACILITY (OPFAC).
 - (1) ATU—Use the two-digit numeric designation of personnel servicing unit to which administratively assigned (e.g., 01 for First District, 98 for Headquarters).
 - (2) OPFAC—Use the OPFAC number assigned to the institution.
- g. DAYS NOT OBSERVED—Enter a two-digit number in all categories representing the days not observed during the evaluation period.
- h. DATE REPORTED—Indicate the actual date of reporting to the school specified in f. as shown by endorsement on orders. Enter date in the same format as e. above.
- i. PERIOD OF REPORT—The regular reporting period commences the day after the ending date of the previous regular OER and ends on the date of the occasion for the report. Dates shall be entered in the same format as e. above.
- j. OCCASION FOR REGULAR REPORT—Mark "Annual," "Semiannual" or "Detachment of Officer" as the occasion for the report.

- k. EXCEPTION REPORT - Leave unmarked.
 - l. DATE SUBMITTED—The date the Reported-on Officer submits the OER form to the Supervisor. Dates will be entered in the same format as (d) above.
2. Section 2, Description of Duties and Attachments.
- a. Identify the institution or school attended and its location, the program or degree sought or earned, and the expected duration or completion of the program (e.g., **Primary Duty: DUINS – UNIVERSITY OF SAN DIEGO**).
 - b. List documents attached to the OER. Letter reports signed by school officials are required at the completion of a DUINS assignment at the Naval War College (senior college), Army War College, Air War College, ICAF, National War College, Harvard National Security Fellowship, National Defense University (NDU) Research Fellowship, and Sloan Fellowship.
 - c. Do not attach transcripts or diplomas.
3. Sections 3 through 10.
- a. The "Not Observed" circle shall be used for all marks. Leave section 9 (comparison or rating scale) blank.
 - b. As applicable to the program being attended, course titles, grades, and grade point average for each semester covered by the OER shall be listed in Block 3f.
 - c. No other comments are authorized in these sections.
4. Reviewer Comments. Reviewer comments shall follow the format specified in Article 10.A.4.d.

10.A.6. Preparation and use of the OSF Worksheet

10.A.6.a. General

This section suggests procedures for preparing and using the optional OSF worksheet. This form may be used by either the Reported-on Officer, the Supervisor, or both, as an aid to establishing a clear understanding of job expectations and assist the Supervisor in providing constructive performance feedback and in preparing proper evaluations. Use of the OSF or similar format is mandatory for Supervisors of all Reported-on Officers in the grades of ensign and lieutenant (junior grade). The form may be handwritten or typed. If a documentation format other than the OSF is used, general adherence to the major sections of the OSF are encouraged.

10.A.6.b. Functions of the OSF

1. Serves as a vehicle for clarifying the Reported-on Officer's job responsibilities and areas of the job which either the Reported-on Officer and/or Supervisor feel should receive emphasis during the reporting period.
2. Serves as a means for the Reported-on Officer to inform the Supervisor if beginning or end-of-period performance feedback or counseling is desired.
3. Provides the Reported-on Officer a means of bringing to the Supervisor's attention significant accomplishments or aspects of performance which occurred during the period.
4. Provides a convenient place for the Supervisor to note significant accomplishments, shortcomings, behavior, or qualities observed during the period.
5. Serves as a vehicle for giving specific, constructive performance feedback.
6. Assists the Supervisor and Reporting Officer in preparing well-substantiated performance evaluations.
7. Serves as a vehicle for the supervisor of a TAD officer, assigned temporarily for periods of less than 60 days, or an ADSW officer, assigned temporarily for periods of 6 months or less, to relay information to the Reported-on Officer's OES Supervisor. The OSF is normally submitted to the Supervisor upon detachment of the officer from TAD.
8. Serves as a means for district commanders to report on commanding officers of Headquarters units located within their districts. This is an optional avenue to address community relations and those aspects of performance relating to the support services defined in Memoranda of Understanding (MOUs), host-tenant agreements, intra-service support agreements, or similar contracts. If used, OSFs will be submitted directly to the Reported-on Officer's regular Supervisor approximately 21 days before the end of the reporting period.

10.A.6.c. The Form

Form CG-5308 (12/97) may be used for all grades of officers. It consists of four pages with six major sections:

1. Administrative Data
2. Description of Duties
3. During Period Adjustments

4. Accomplishments and Shortcomings for the Reporting Period
5. Supervisor Comments on Reported-on Officer Accomplishments and Shortcomings
6. Performance Observations

10.A.6.d. Preparation

1. Section 1, Administrative Data.
 - a. NAME/RANK OF REPORTED-ON OFFICER.
 - b. NAME/RANK OF SUPERVISOR—Normally, this will be the primary Supervisor as published in the rating chain.
 - c. PERIOD COVERED—The period of time covered by the information noted in the form. Normally the same as the OER reporting period.
2. Section 2a, Description of Duties.
 - a. This space provides opportunity for the Reported-on Officer or Supervisor to make a “common sense” outline of the Reported-on Officer’s normal duty requirements for the specific billet or duty position.
 - b. Entries should show the type of work required rather than frequently changing tasks.
 - c. Descriptions should be clear, concise, and specific; explain what the Reported-on Officer’s job is; and not merely list primary and collateral duty titles.
 - d. Entries should include a description of primary duties and significant collateral duties. Specific requirements, key activities, and available resources (such as amount of money controlled and number of people supervised) should also be described.
3. Section 2b, Areas of Emphasis.
 - a. This section provides an opportunity for the Reported-on Officer or Supervisor to record specific projects to be completed, problems anticipated, progress sought, and specific results expected during the reporting period.
 - b. Particular goals for the Reported-on Officer’s professional development during the period may be listed as well (such as completion of professional qualifications or exams, attendance at particular training courses, or completion of correspondence courses, etc.).

4. Section 2c, Initial Meeting Desired.

- a. This section shall be used by the Reported-on Officer to notify the Supervisor if a meeting is desired at the beginning of the reporting period to discuss what is expected for the coming period. If the Reported-on Officer desires a meeting, they shall submit the OSF to the Supervisor no later than 21 days before the beginning of the reporting period.
- b. When the conference has been held, the Supervisor should date and initial the OSF in the space indicated.

5. Section 3, During Period Adjustments.

- a. This section is useful when circumstances affecting the Reported-on Officer's duties, projects, and areas of emphasis change to any significant degree.
- b. The Reported-on Officer or Supervisor may note new tasks, altered responsibilities, changes of resources, or special problems emerging during the reporting period that impact upon the Reported-on Officer's ability to attain the expected results.

6. Section 4a, Accomplishments for the Period.

- a. In this section, the Reported-on Officer may list accomplishments and progress toward completing projects or achieving expected results entered in Section 2b. Educational or professional accomplishments achieved may be entered as well.
- b. If the Reported-on Officer intends to apprise the Supervisor of accomplishments or progress for the period using the OSF, the Reported-on Officer shall submit the OSF no later than 21 days before the end of the reporting period.

7. Section 4b, End of Period Meeting Desired.

- a. The Reported-on Officer shall use this section to notify the Supervisor an end-of-period meeting is desired.
- b. When the conference has been held, the Supervisor should date and initial the OSF in the space indicated.

8. Section 5, Supervisor's Comments on the Reported-on Officer's Accomplishments and Shortcomings for Period.

- a. The Supervisor may affirm, supplement, expand, or otherwise comment upon

the Reported-on Officer's accomplishments during the reporting period. The Supervisor should draw from the information generated by conferences and other performance.

- b. Comments here may become a subject for discussion during the end-of-period conference.

9. Section 6, a-f, Performance Observations.

- a. This section of the OSF is used by the Supervisor to note specific examples of the Reported-on Officer's performance or qualities observed or brought to the Supervisor's attention in each of the major evaluation areas of the OER.
- b. The most significant incidents or aspects of performance should be noted for recall to assist in providing constructive performance feedback and substantiating evaluations on the OER. Entries are best noted chronologically as they occur in the appropriate evaluation area.
- c. For convenience, the Supervisor may use the OSF as a file folder to keep notations of observed performance and to append copies of correspondence, messages, or other documentation related to the Reported-on Officer's performance during the reporting period.
- d. Supervisors are encouraged to exercise imagination in utilizing section 6 of the OSF as an aid in obtaining information related to the Reported-on Officer's performance. For example, practices such as circulating a copy of the OSF to other staff members who may have knowledge of the Reported-on Officer's performance or the performance of their organizational unit are acceptable and may be helpful.

10.A.6.e. Disposition of the OSF

1. When the OSF has been used by the Reported-on Officer and the Supervisor, the Supervisor should transfer any pertinent information or notes from his or her copy to the original, which has been held by the Reported-on Officer during the period. Having used the OSF as an aid in evaluating the Reported-on Officer's performance, the Supervisor then forwards the original OSF, the OER, and any other information available to the Reporting Officer. The Supervisor then destroys the copy of the OSF, if different from the original. A photocopy of the original may be retained.
2. The step in paragraph 1. above (describing the transfer of information from a working copy to the original OSF) represents one recommended way and is not intended to restrict the Supervisor in finding a flexible or more convenient way to finalize the OSF. There are a variety of approaches by which information may be obtained or transferred from one form to another subject to the Supervisor's preference. The goal is for the Reported-on Officer to be aware of what his or

her evaluation will be based on and to provide the Supervisor and Reporting Officer with objective data for consideration in writing the OER.

3. Supervisors and Reported-on Officers are encouraged to be flexible in using the OSF as an aid in carrying out their duties within the spirit of these instructions. Filing copies of correspondence, messages, work lists, trip reports, and even paper notes in the OSF is a sound means of spontaneously documenting the Reported-on Officer's performance. These documents can greatly assist in giving performance feedback and writing an evaluation.
4. Assisted by the OSF, personal observations, and other information available, the Reporting Officer evaluates the Reported-on Officer's performance of duties, personal qualities, and potential for increased responsibilities. After completion of the appropriate OER sections, the Reporting Officer returns the OSF to the Reported-on Officer.

10.A.7. Correction of Military Records

Coast Guard officers are encouraged to review their record periodically. While Commander, (CGPC-opm) and Commander (CGPC-rpm) attempt to ensure that OERs accurately reflect officers' performance, the possibility of administrative or substantive error still exists. Accordingly, officers may seek correction of any OER, or any portion thereof, if in their opinion the report is in error. Those officers wishing to exercise this right should follow the procedures to correct military records contained in Article 14.B. for forwarding the application to the Personnel Records Review Board (PRRB) or Board for Correction of Military Records (BCMR), as appropriate. The application may be forwarded through the original rating chain at an officer's option. If the whereabouts of the original members of the rating chain are unknown, officers should submit the application directly to the PRRB or BCMR. Additionally, an officer may forward his or her application via the officer's current chain of command but is not required to do so and may send the application directly to the PRRB or BCMR.

10.A.8. OES Changes

10.A.8.a. General

Commander (CGPC) will report annually on the health of the Officer Evaluation System (OES). Statistical trends and conclusions will be included in the report, plus recommended changes for the current year and identification of issues and/or changes under consideration.

10.A.8.b. Participation

Anyone is encouraged to recommend improvement or change. Address formal or informal correspondence to Commander (CGPC-rpm) or Commander (CGPC-opm-3). Communication by telephone is also encouraged to discuss issues or areas of personal concern.

