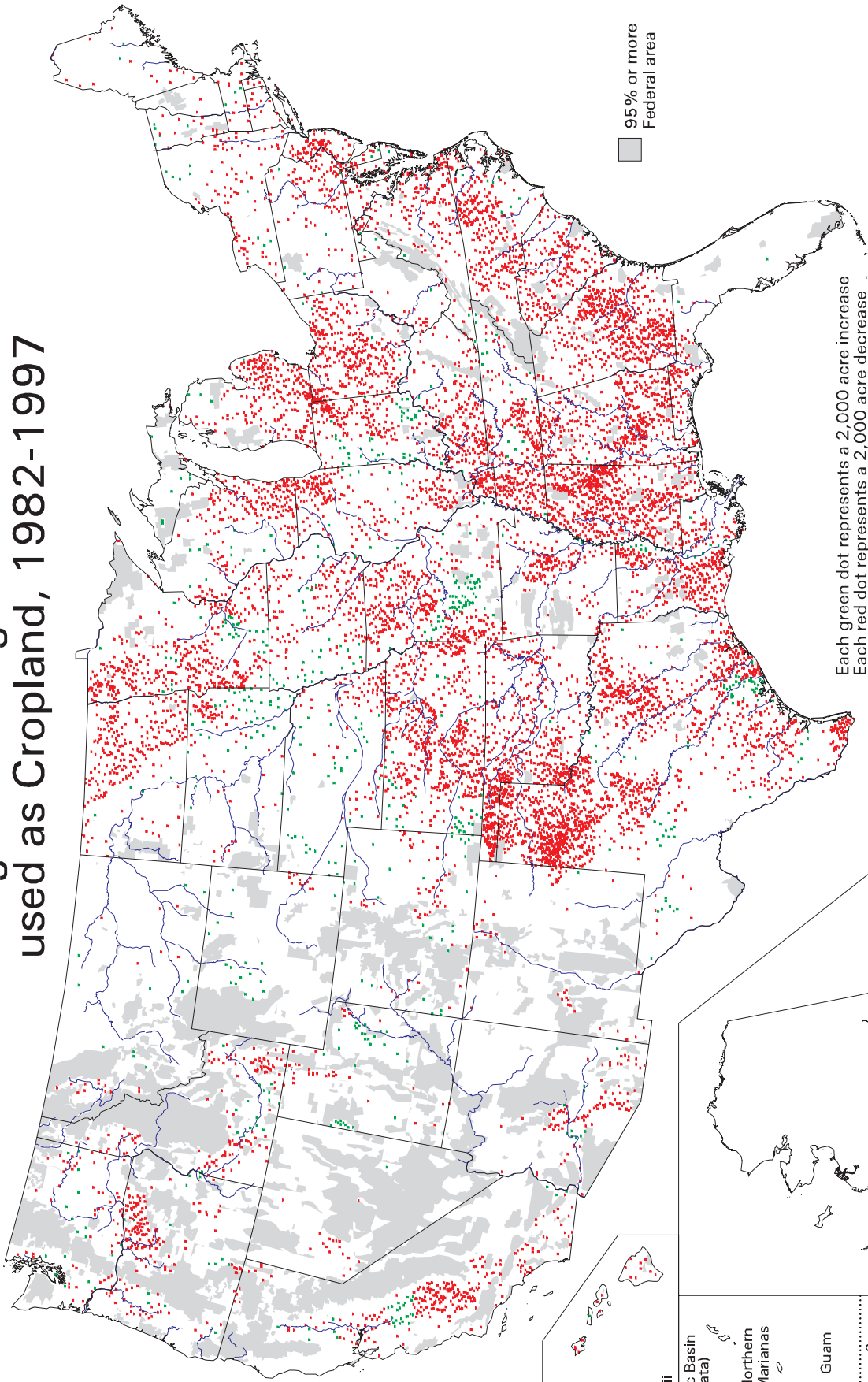


# Net Change in Acreage of Prime Farmland used as Cropland, 1982-1997



Each green dot represents a 2,000 acre increase  
 Each red dot represents a 2,000 acre decrease  
 National net decrease: 18,580,500 acres

95% or more  
Federal area

Hawaii  
Pacific Basin  
(No Data)  
Northern  
Marianas  
Guam  
American Samoa

Alaska (No Data)

Puerto Rico / U.S. Virgin Islands



U.S. Department of Agriculture  
Natural Resources Conservation Service  
Resource Assessment Division  
Washington DC March 2001

Map ID: m6001  
For proper interpretation, see Explanation  
of Analysis for this map at our web site. Search  
for "USDASOTL" to locate our map index.

Data Source: 1997 National Resources Inventory  
Revised December 2000