

# Local Health Department Perspectives

*Dorothy Gonzales, REHS/RS*

Food Safety Program Manager

Genesee County Health Department

Michigan

# Genesee County, Michigan

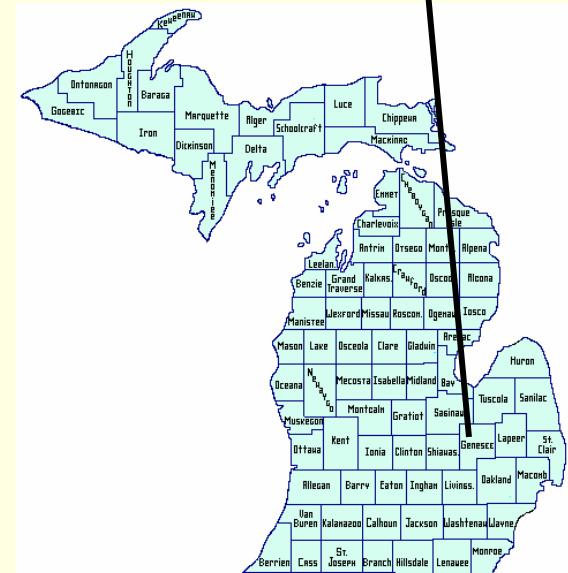
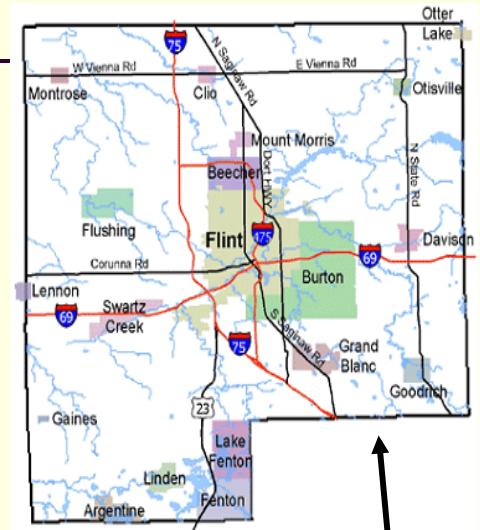
Location: Mid-State, Lower Peninsula

Population of Genesee County: 439,000\*

Health Department: 160 staff, 3 locations

Food Safety Program: 1500 facilities. We do not inspect retail/grocery stores

Staff size: 10 inspectors, 2 plan reviewers, 1 coordinator, 2 clerical

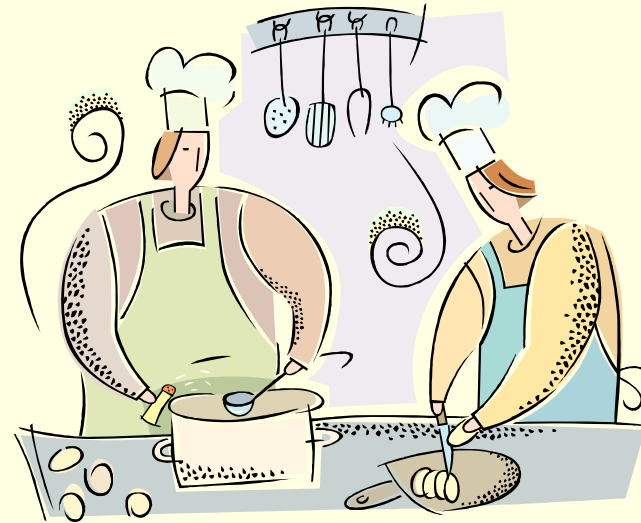


\*U.S. Census Bureau, 2004 American Community Survey)

# LHD Challenges

---

- Outbreak Collaboration
- Communication
- Federal Protocols
- Recall Steps



# Local Collaboration

---

- 1 LHD has many ill residents – they ate at facility in another LHD jurisdiction.
- People ill in several local jurisdictions and 1 county refuses to coordinate with others. They want to be in charge of their jurisdiction.

.....Is mostly non-existent

# Local Experience

---

- How do you accurately and in a timely manner identify the appropriate people from each agency that need to be involved?
- Chain FSE's have their own quality assurance protocol and sometimes attempt to investigate internally and not notify the LHD at all.

# Local Experience

---

- Dickinson-Iron District Health Department
  - Honduran Cantaloupes
  - Michigan NOT in original recall notice
  
- Slow Communication to locals

# Local Experience

---

- Saginaw & Oakland Counties participated in Food Defense Surveillance Assignment 2007
  - Conduct routine inspection, discuss alert, & collect trace back/trace forward info.
  - 1<sup>st</sup> Issue: accurately and confidently reading labels on packaging.
  - 2<sup>nd</sup> Issue: locals do not have proper forms.

# Local Experience

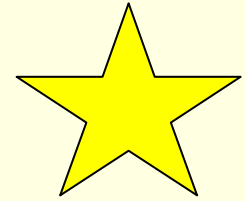
---

- Genesee County participation in Recall Effectiveness Checks
  - Davis Creek Meats & Seafood
    - Site visit required
    - 7 of 10 facilities had not heard of recall and had product to be discarded.
    - How many more facilities had product in our county?

**Voluntary ≠ Good Public Health**



# Local Collaboration



- Metro Atlanta area
  - “Infectious Disease Case Management Across Jurisdictions” Protocol
    - 5 health districts, GDPH

[Ill person in one district, FSE located in another.  
Other ill people in 2 or 3 other districts.]

Protocol designates who is the lead, which districts investigate at establishment & which administer questionnaires.

# Local Needs

---

- Training on recall trace back of product; reading packaging; forms
- Knowledge of federal protocols
- Communication strategies
- Collaboration protocol