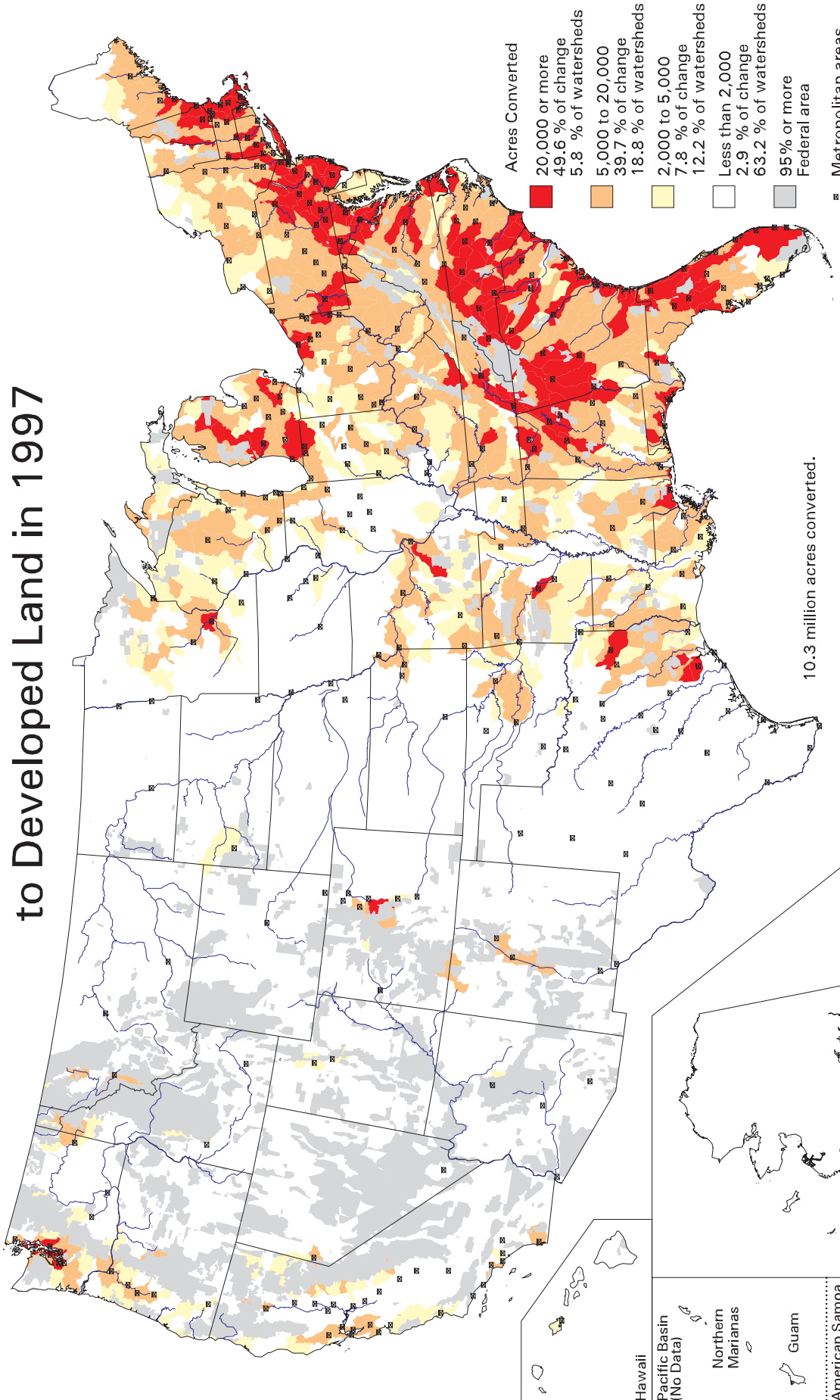


Acres of 1982 Forest Land Converted to Developed Land in 1997



Acres Converted	
[Red]	20,000 or more
[Dark Orange]	49.6 % of change
[Orange]	5.8 % of watersheds
[Light Orange]	5,000 to 20,000
[Yellow]	39.7 % of change
[Light Yellow]	18.8 % of watersheds
[White]	2,000 to 5,000
[Lightest Yellow]	7.8 % of change
[White]	12.2 % of watersheds
[White]	Less than 2,000
[White]	2.9 % of change
[White]	63.2 % of watersheds
[Grey]	95% or more
[Grey]	Federal area
[Square]	Metropolitan areas

10.3 million acres converted.

Watersheds are defined as U.S. Geological Survey Hydrologic Cataloging Units (8-digit).

