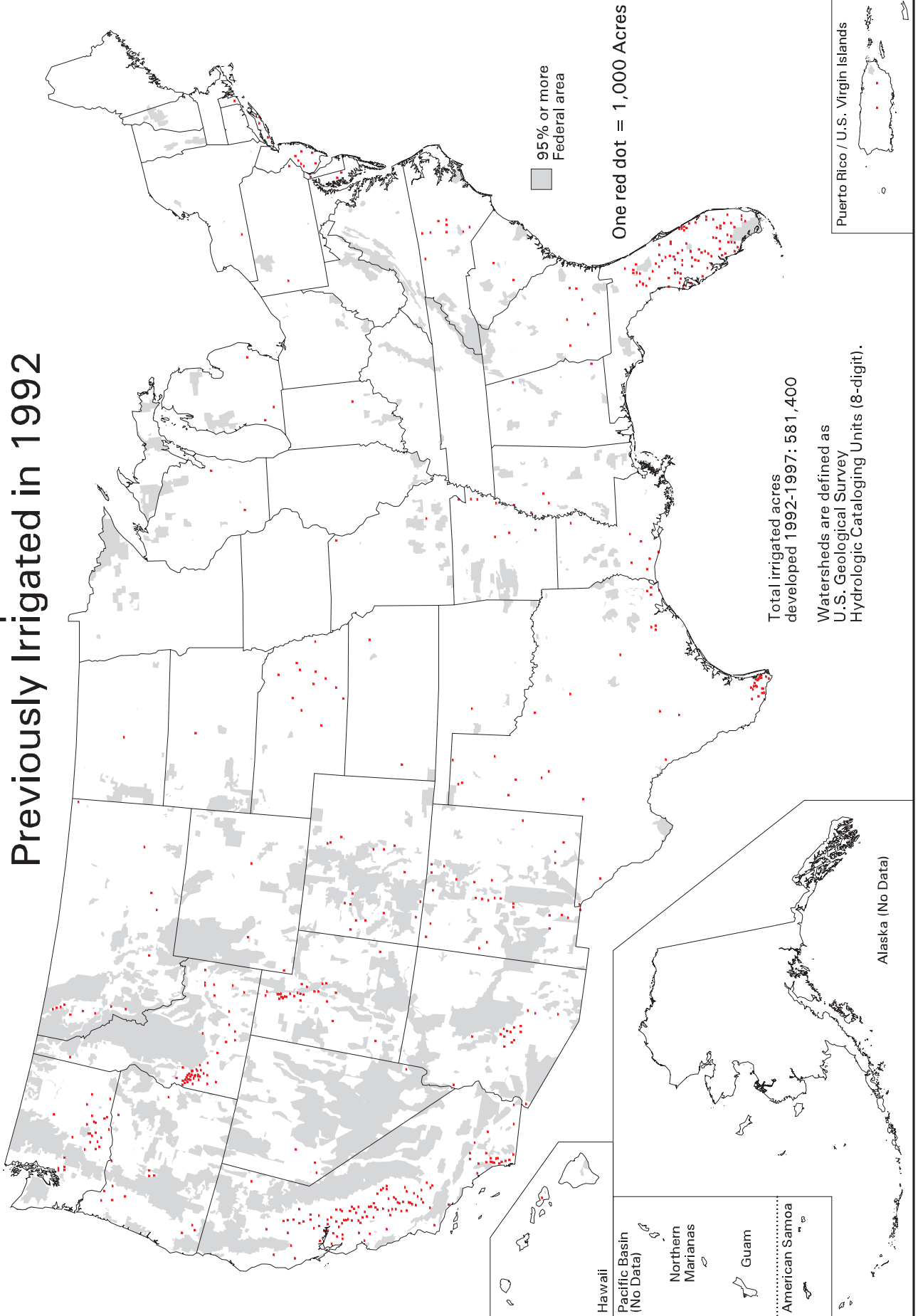


Acres of Developed Land in 1997 Previously Irrigated in 1992



Data Source: 1997 National Resources Inventory
Revised December 2000

Map ID: m5347
For proper interpretation, see Explanation of Analysis for this map at our web site. Search for "USDASOTL" to locate our map index.

U.S. Department of Agriculture
Natural Resources Conservation Service
Resource Assessment Division
Washington DC January 2001

