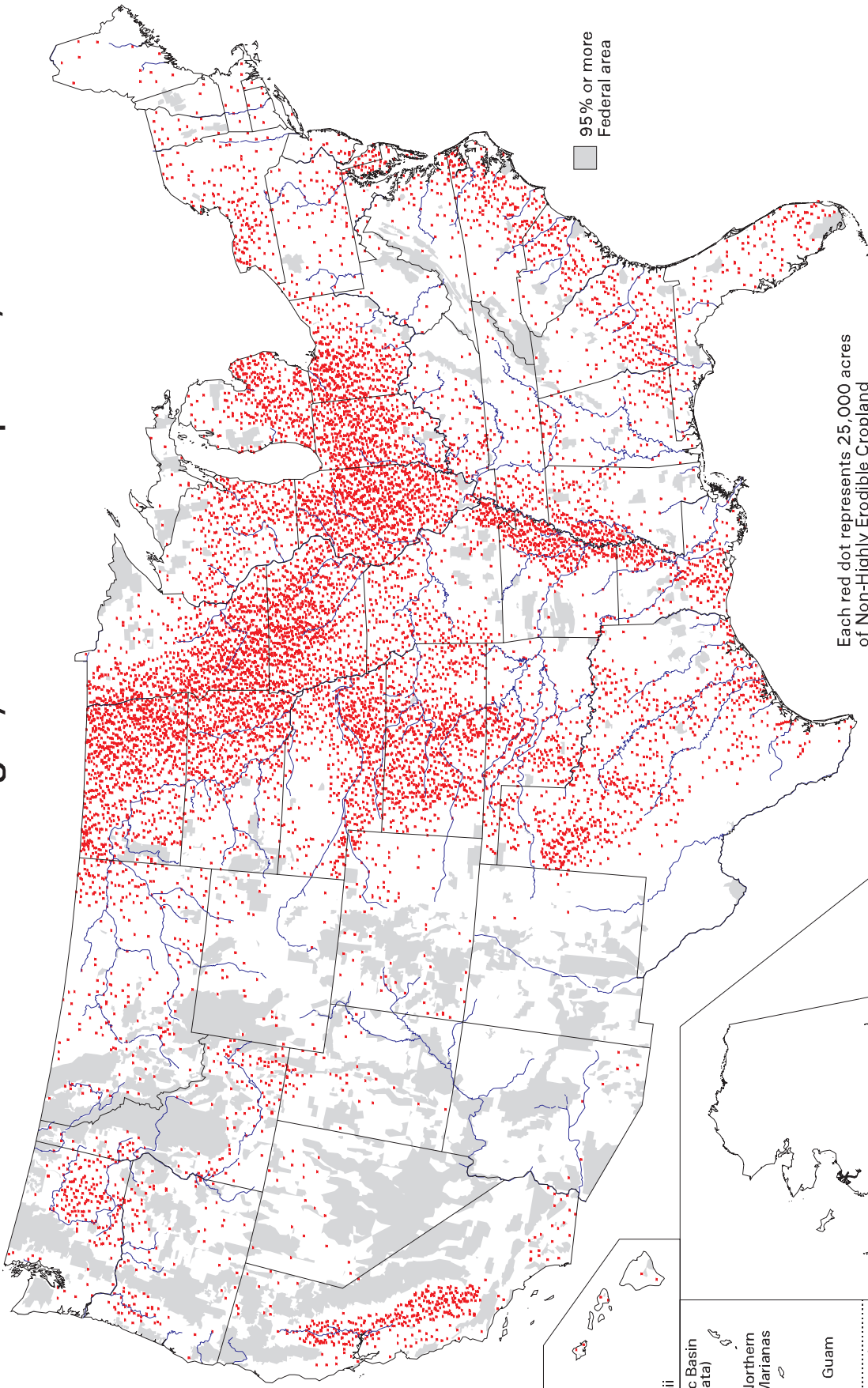


Acres of Non-Highly Erodible Cropland, 1987



Puerto Rico / U.S. Virgin Islands

Hawaii
 Pacific Basin (No Data)
 Northern Marianas
 Guam
 American Samoa

Alaska (No Data)

Each red dot represents 25,000 acres of Non-Highly Erodible Cropland
 Total Non-Highly Erodible Acres: 289,809,300



U.S. Department of Agriculture
 Natural Resources Conservation Service
 Resource Assessment Division
 Washington DC March 2001

Map ID: m5995
 For proper interpretation, see Explanation of Analysis for this map at our web site. Search for "USDASOTL" to locate our map index.

Data Source: 1997 National Resources Inventory
 Revised December 2000