

SOUTH DAKOTA

ALL WHEAT STOCKS - ALL POSITIONS

Year	Sep. 1/	Dec. 1/	March	June
----- 1,000 Bushels -----				
1980	83,945	73,839	58,028	51,988
1990	90,967	74,917	52,093	25,812
2000	133,583	88,854	73,172	40,144
2004	105,081	66,847	51,073	29,923
2005	116,827	78,286	58,446	22,588
2006	112,838	71,234	48,279	23,970

ALL WHEAT STOCKS - ON FARMS

Year	Sep. 1/	Dec. 1/	March	June
----- 1,000 Bushels -----				
1980	63,664	60,060	48,048	39,640
1990	68,000	55,000	38,000	19,000
2000	100,000	70,000	54,000	28,000
2004	64,000	42,000	26,000	14,500
2005	75,000	52,000	35,000	15,000
2006	72,000	48,000	26,000	11,000

ALL WHEAT STOCKS - OFF FARMS

Year	Sep. 1/	Dec. 1/	March	June
----- 1,000 Bushels -----				
1980	20,281	13,779	9,980	12,348
1990	22,967	19,917	14,093	6,812
2000	33,583	18,854	19,172	12,144
2004	41,081	24,847	25,073	15,423
2005	41,827	26,286	23,446	7,588
2006	40,838	23,234	22,279	12,970

1/ Previous year.

Wheat Facts

THESE FACTS ARE MADE POSSIBLE
THROUGH THE VARIOUS
SURVEYS COMPLETED
BY PRODUCERS.

A SPECIAL THANKS
TO ALL PRODUCERS
WHO FURNISH
INFORMATION ON OUR
SURVEYS SO WE
CAN PROVIDE THESE
FACTS.

USDA-NASS
SOUTH DAKOTA FIELD OFFICE
Carter Anderson, Director
Steve Noyes, Deputy Director

5020 S. Broadband Lane
P.O. Box 5068
Sioux Falls, SD 57117-5068
Telephone: (605) 323-6500
E-mail: nass-sd@nass.usda.gov
State reports: www.nass.usda.gov/sd/
National reports: www.nass.usda.gov/



United States Department of Agriculture
National Agricultural Statistics Service
South Dakota Field Office

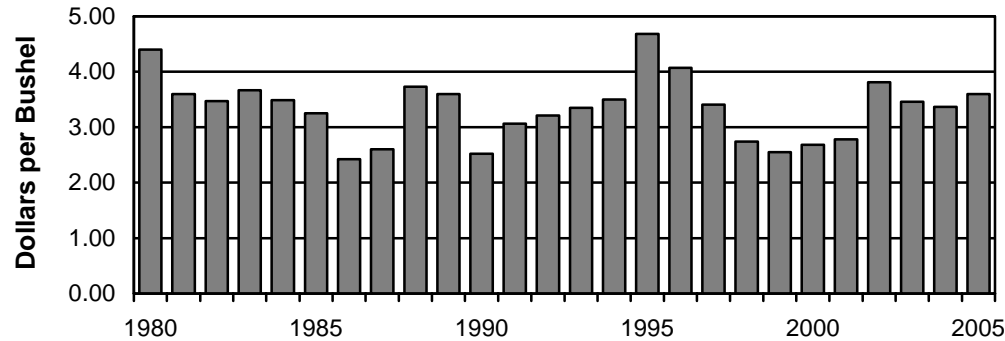


October 2006



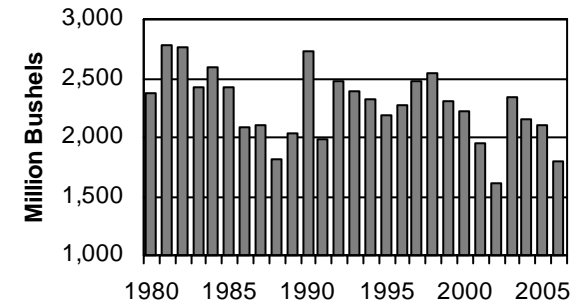
SOUTH DAKOTA

ALL WHEAT MARKETING YEAR AVERAGE PRICE, 1980-2005



UNITED STATES

ALL WHEAT PRODUCTION, 1980-2006



SOUTH DAKOTA

PRICES RECEIVED-WINTER WHEAT

Month	2003	2004	2005
----- Dollars per Bushel -----			
Jan	3.76	3.54	3.29
Feb	3.62	3.64	3.19
Mar	3.49	3.60	3.24
Apr	3.37	3.65	3.12
May	3.30	3.67	3.16
Jun	3.14	3.60	3.20
Jul	2.88	3.22	3.06
Aug	3.08	3.10	2.99
Sep	3.22	3.15	3.26
Oct	3.31	3.12	3.45
Nov	3.35	3.23	3.39
Dec	3.51	3.17	3.56

SOUTH DAKOTA

PRICES RECEIVED-ALL WHEAT

Month	2003	2004	2005
----- Dollars per Bushel -----			
Jan	3.87	3.65	3.42
Feb	3.82	3.81	3.47
Mar	3.60	3.79	3.44
Apr	3.42	3.79	3.30
May	3.47	3.86	3.29
Jun	3.42	3.74	3.64
Jul	3.05	3.25	3.25
Aug	3.24	3.14	3.40
Sep	3.24	3.36	3.58
Oct	3.42	3.45	3.72
Nov	3.44	3.52	3.79
Dec	3.62	3.40	3.72

PRICES RECEIVED-OTHER SPRING WHEAT

Month	2003	2004	2005
----- Dollars per Bushel -----			
Jan	3.96	3.73	3.54
Feb	3.91	3.86	3.67
Mar	3.71	3.90	3.59
Apr	3.45	3.93	3.41
May	3.61	4.01	3.37
Jun	3.50	3.85	3.78
Jul	3.33	3.37	3.57
Aug	3.29	3.17	3.56
Sep	3.25	3.45	3.77
Oct	3.46	3.60	3.92
Nov	3.64	3.70	3.94
Dec	3.76	3.64	3.92

CASH RECEIPTS-ALL WHEAT

Year	Total All Commodities	All Wheat	% of Total
-- Million Dollars -- Percent			
1980	2,721	274	10
1990	2,963	258	9
2000	3,731	309	8
2003	4,180	318	8
2004	4,579	383	8
2005	4,863	446	9

LEADING PRODUCTION STATES-2006

Rank	Winter Wheat	Durum Wheat	Oth. Spg. Wheat
1	KS	ND	ND
2	WA	AZ	MN
3	MT	MT	MT
4	OK	CA	SD
5	OH	ID	ID
6	NE	SD	
11	SD		

WHEAT PRODUCTION

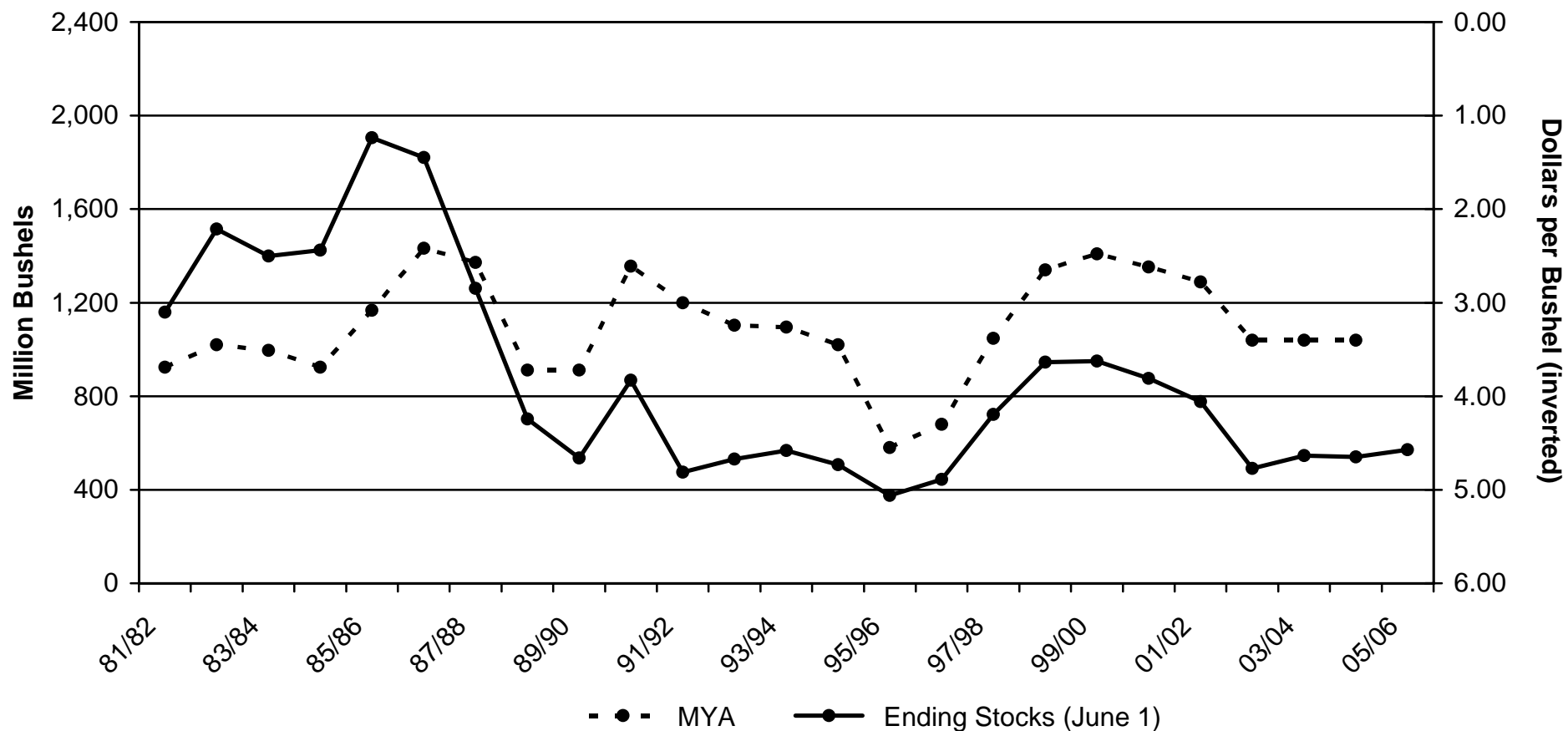
Year	Winter Wheat	Durum Wheat	Oth. Spg. Wheat	All Wheat
----- Million Bushels -----				
1980	1,902	108	371	2,381
1990	2,024	122	583	2,730
2000	1,562	110	557	2,228
2005	1,499	101	504	2,105
2006	1,298	53	460	1,812

ALL WHEAT ENDING STOCKS AND MARKETING YEAR AVERAGE PRICE

Year	June Stocks 1/	Winter Wheat	Oth. Spg. Wheat	All Wheat
Mil. Bu.		--- Dollars per Bushel ---		
1980	989	3.88	4.10	3.99
1990	868	2.62	2.58	2.61
2000	876	2.51	2.85	2.62
2004	540	3.32	3.51	3.40
2005	571	3.32	3.65	3.42

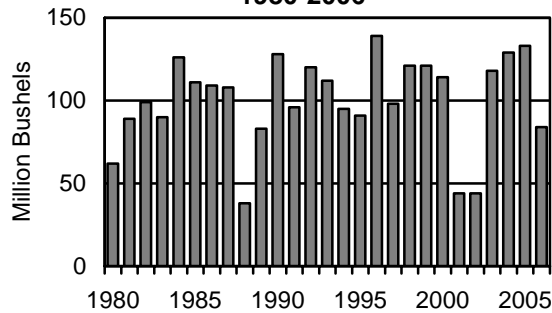
1/ Following year.

ALL WHEAT - U.S. ENDING STOCKS VS. PRICE PER BUSHEL



SOUTH DAKOTA

ALL WHEAT PRODUCTION, 1980-2006



WINTER WHEAT

Year	Plt.	Harv.	Yield	Prod.
	-- 1,000 Acres --		Bu.	1,000 Bu.
1980	1,200	950	22.0	20,900
1990	1,850	1,600	36.0	57,600
2000	1,350	1,280	42.0	53,760
2004	1,650	1,250	45.0	56,250
2005	1,550	1,490	44.0	65,560
2006	1,450	1,150	36.0	41,400

OTHER SPRING WHEAT

Year	Plt.	Harv.	Yield	Prod.
	-- 1,000 Acres --		Bu.	1,000 Bu.
1980	2,600	2,080	18.0	37,440
1990	2,200	2,100	32.0	67,200
2000	1,650	1,580	38.0	60,040
2004	1,600	1,530	47.0	71,910
2005	1,750	1,690	40.0	67,600
2006	1,850	1,420	30.0	42,600

DURUM WHEAT

Year	Plt.	Harv.	Yield	Prod.
	-- 1,000 Acres --		Bu.	1,000 Bu.
1980	250	215	19.0	4,085
1990	90	89	36.0	3,204
2000	20	18	26.0	468
2004	20	18	25.0	450
2005	15	13	20.0	260
2006	10	6	15.0	90

SOUTH DAKOTA

ALL WHEAT

Year	Plt.	Harv.	Yield	Prod.
	-- 1,000 Acres --		Bu.	1,000 Bu.
1980	4,050	3,245	19.2	62,425
1990	4,140	3,789	33.8	128,004
2000	3,020	2,878	39.7	114,268
2004	3,270	2,798	46.0	128,610
2005	3,315	3,193	41.8	133,420
2006	3,310	2,576	32.6	84,090

MARKETING YEAR AVERAGE PRICE

Year	Winter Wheat	Durum Wheat	Oth. Spg. Wheat	All Wheat
	----- Dollars per Bushel -----			
1980	3.98	6.30	4.30	4.40
1990	2.39	2.65	2.60	2.52
2000	2.52	2.97	2.81	2.68
2003	3.32	4.12	3.58	3.46
2004	3.19	3.80	3.49	3.37
2005	3.44	3.60	3.82	3.65

LEADING PRODUCTION COUNTIES - 2005

Rank	All Wheat	Winter Wheat	Oth. Spg. Wheat
1	Sully	Sully	Spink
2	Spink	Haakon	Edmunds
3	Potter	Lyman	Sully
4	Hand	Charles Mix	Day
5	Haakon	Tripp	Brown
6	Lyman	Stanley	Roberts
7	Edmunds	Hughes	Hand
8	Charles Mix	Potter	Faulk
9	Hughes	Hand	Potter
10	Tripp	Pennington	Walworth

ACREAGE, YIELD AND PRODUCTION:

 = Record Low

 = Record High

SOUTH DAKOTA

WINTER WHEAT VARIETIES SEEDED, 1999, 2002 & 2005

Variety	1999	2002	2005	
	Per-cent	Per-cent	Per-cent	Acres Seeded
Wesley	---	10.6	33.6	520.6
Nekota	25.0	23.5	12.1	187.5
Arapahoe	38.0	28.1	10.2	158.3
Jagalene	---	---	6.0	93.1
Expedition	---	---	3.6	55.1
Wahoo	---	---	2.4	37.4
Alliance	6.3	4.9	2.3	36.4
Harding	---	2.9	1.8	27.4
Rose	3.8	3.3	1.5	23.6
Crimson	1.5	4.2	1.4	21.9
Jagger	---	---	1.3	20.6
Scout/Scout 66	---	---	1.2	18.5
Tandem	0.9	2.1	1.0	16.0
Other Varieties 1/	21.9	19.3	21.5	333.6
Total 2/	100.0	100.0	100.0	1,550.0

1/ Includes varieties with less than 1% of the acreage in 2005 and unknown varieties. 2/ Percentages may not add due to rounding.

SPRING WHEAT VARIETIES SEEDED, 1999, 2002 & 2005

Variety	1999	2002	2005	
	Per-cent	Per-cent	Per-cent	Acres Seeded
Briggs	---	---	29.5	515.5
Oxen	28.6	23.3	12.8	224.1
Forge	11.6	16.8	9.7	169.4
Russ	26.8	18.4	8.4	147.1
Reeder	---	2.4	6.2	109.1
Walworth	---	4.1	4.7	82.0
Granger	---	---	3.3	58.6
Norpro	---	1.1	2.4	42.7
Ingot	0.8	12.0	2.1	37.2
Butte 86/Butte	12.8	4.1	2.1	36.1
Knudson	---	---	2.1	35.9
Mercury	---	---	1.5	27.1
Other Varieties 1/	19.4	17.8	15.2	265.2
Total 2/	100.0	100.0	100.0	1,750.0

1/ Includes varieties with less than 1% of the acreage in 2005 and unknown varieties. 2/ Percentages may not add due to rounding.