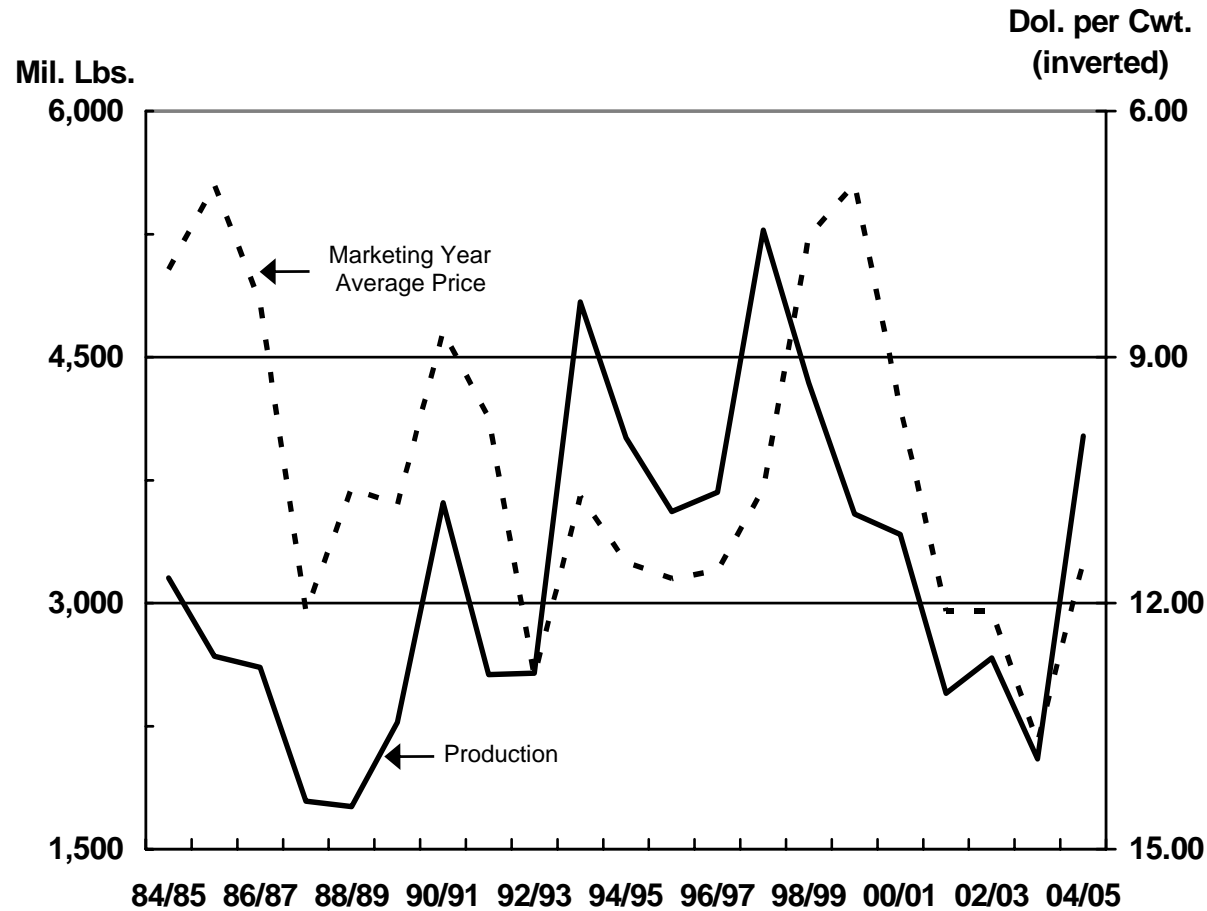


SOUTH DAKOTA

**ALL SUNFLOWER---
U.S. PRODUCTION VS. PRICE/CWT. 1/**



1/ Includes 4 states (MN, ND, SD, TX) prior to 1988, 5 states (KS, MN, ND, SD, TX) from 1988-1990, all states (except AK & HI) beginning in 1991.

SUNFLOWER LEADING COUNTIES - 2005

Rank	County	Prod. (pounds)
1	Sully	175,043,000
2	Potter	89,912,000
3	Hand	74,755,000
4	Walworth	51,276,000
5	Hughes	48,036,000
6	Hyde	47,653,000
7	Lyman	43,018,000
8	McPherson	38,838,000
9	Edmunds	32,032,000
10	Campbell	NA

NA = Not Available

**THESE FACTS ARE MADE
POSSIBLE THROUGH THE
VARIOUS SURVEYS
COMPLETED BY PRODUCERS.**

**A SPECIAL THANKS TO ALL
PRODUCERS WHO FURNISH
INFORMATION ON OUR SURVEYS
SO WE CAN PROVIDE
THESE FACTS.**

USDA-National Agricultural Statistics
Service
South Dakota Field Office
Carter Anderson, Director
Steve Noyes, Deputy Director

5020 S. Broadband Lane
P.O. Box 5068
Sioux Falls, SD 57717-5068
Telephone: (605) 323-6500

E-mail: nass-sd@nass.usda.gov

State reports: <http://www.nass.usda.gov/sd>
National reports: <http://www.usda.gov/nass>

Sunflower Facts



United States Department of Agriculture
National Agricultural Statistics Service
South Dakota Field Office

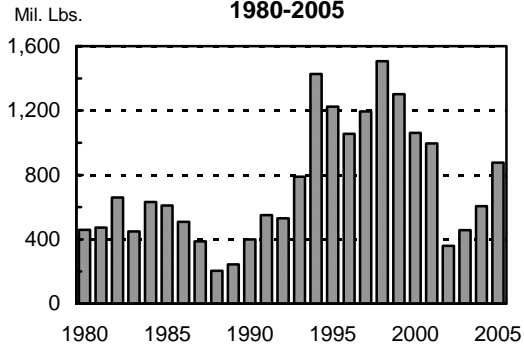


August 2006



SOUTH DAKOTA

ALL SUNFLOWER PRODUCTION, 1980-2005



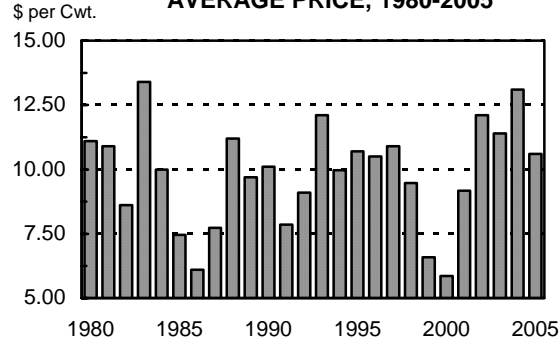
ALL SUNFLOWER				
Year	Plt.	Harv.	Yield	Prod
	-- 1,000 Acres --		Lbs.	Mil. Lbs.
1980	525	550	920	460.0
1990	300	295	1,355	399.8
2000	720	699	1,519	1,061.7
2003	505	455	1,005	457.5
2004	435	415	1,462	606.7
2005	550	530	1,655	877.0

OIL SUNFLOWER				
Year	Plt.	Harv.	Yield	Prod
	-- 1,000 Acres --		Lbs.	Mil. Lbs.
1980	524	499	920	459.1
1990	285	280	1,350	378.0
2000	680	660	1,520	1,003.2
2003	475	430	1,000	430.0
2004	410	394	1,460	575.2
2005	500	481	1,650	793.7

NON-OIL SUNFLOWER				
Year	Plt.	Harv.	Yield	Prod
	-- 1,000 Acres --		Lbs.	Mil. Lbs.
1980	1	1	930	0.9
1990	15	15	1,450	21.8
2000	40	39	1,500	58.5
2003	30	25	1,100	27.5
2004	25	21	1,500	31.5
2005	50	49	1,700	83.3

SOUTH DAKOTA

ALL SUNFLOWER MARKETING YEAR, AVERAGE PRICE, 1980-2005



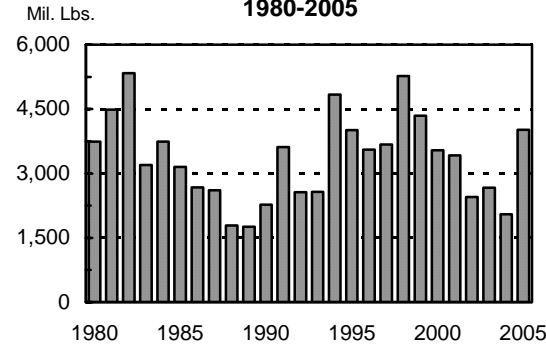
ALL SUNFLOWER		
Year	Marketing Year Ave. Price	Value of Production
	- Dol. Per Cwt. -	-- 1,000 Dollars --
1980	11.10	460,010
1990	10.10	399,750
2000	5.86	1,061,700
2003	11.40	457,500
2004	13.10	606,740
2005	10.60	876,950

OIL SUNFLOWER		
Year	Marketing Year Ave. Price	Value of Production
	- Dol. Per Cwt. -	-- 1,000 Dollars --
1980	11.10	50,958
1990	10.00	37,800
2000	5.73	57,483
2003	11.00	47,300
2004	12.80	73,631
2005	10.30	81,746

NON-OIL SUNFLOWER		
Year	Marketing Year Ave. Price	Value of Production
	- Dol. Per Cwt. -	-- 1,000 Dollars --
1980	10.80	123
1990	16.00	2,719
2000	10.60	6,201
2003	13.20	3,630
2004	14.70	4,631
2005	11.70	9,746

UNITED STATES

ALL SUNFLOWER PRODUCTION, 1980-2005



SUNFLOWER PRODUCTION RANKING- 2005		
Rank	State	Prod. (1,000 Lbs.)
1	North Dakota	1,752,650
2	South Dakota	876,950
3	Kansas	452,100
4	Minnesota	262,250
5	Colorado	196,400

1/ Includes 4 states (MN, ND, SD, TX) prior to 1988; 5 states (KS, MN, ND, SD, TX) from 1988-1990; all states (except AK & HI) beginning in 1991.

ACREAGE, YIELD, AND PRODUCTION:

 = Record Low
 = Record High

UNITED STATES

ALL SUNFLOWER

State	Plt.	Harv.	Yield	Prod
	-- 1,000 Acres --		Lbs.	Mil. Lbs.
CO	215	205	1,279	262.3
KS	300	289	1,564	452.1
MN	135	127	1,448	184.0
NE	99	96	1,479	142.0
ND	1,140	1,105	1,586	1,752.7
SD	550	530	1,655	877.0
TX	145	140	1,403	196.4
Other States	125	118	1,289	152.1
U.S.	2,709	2,610	1,540	4,018.4

OIL SUNFLOWER

State	Plt.	Harv.	Yield	Prod
	-- 1,000 Acres --		Lbs.	Mil. Lbs.
CO	150	145	1,250	181.3
KS	255	245	1,540	377.3
MN	75	72	1,600	115.2
NE	60	58	1,400	81.2
ND	910	885	1,610	1,424.9
SD	500	481	1,650	796.7
TX	50	48	1,600	76.8
Other States	104	98	1,300	127.4
U.S.	2,104	2,032	1,564	3,177.6

NON-OIL SUNFLOWER

State	Plt.	Harv.	Yield	Prod
	-- 1,000 Acres --		Lbs.	Mil. Lbs.
CO	65	60	1,350	81.0
KS	45	44	1,700	74.8
MN	60	55	1,250	68.8
NE	39	38	1,600	60.8
ND	230	220	1,490	327.8
SD	50	49	1,700	83.3
TX	95	92	1,300	119.6
Other States	21	20	1,234	24.7
U.S.	605	578	1,455	840.7

U.S. PRODUCTION AND MARKETING YEAR AVERAGE PRICE 1/

Year	Production	Price
	Million Lbs.	\$ per Cwt.
1980	3,741.6	11.10
1990	2,274.4	10.80
2000	3,544.4	6.89
2003	2,665.2	12.10
2004	2,049.6	13.70
2005	4,018.4	11.50