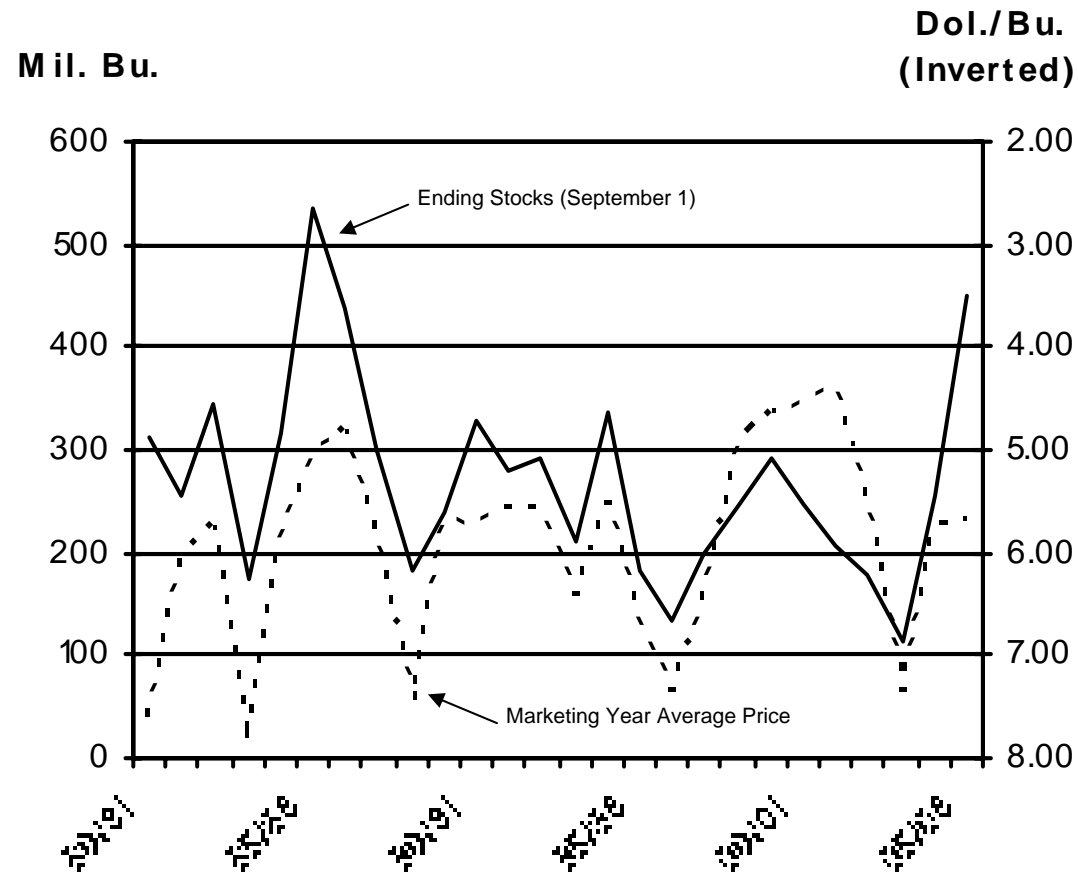


# Soybean Facts

## SOYBEANS --- U.S. ENDING STOCKS VS. PRICE PER BUSHEL



THESE FACTS ARE MADE  
POSSIBLE THROUGH THE  
VARIOUS SURVEYS  
COMPLETED BY PRODUCERS.

A SPECIAL THANKS TO ALL  
PRODUCERS WHO FURNISH  
INFORMATION ON OUR SURVEYS  
SO WE CAN PROVIDE  
THESE FACTS.

USDA-NASS  
SOUTH DAKOTA FIELD OFFICE  
Carter Anderson, Director  
Steve Noyes, Deputy Director

5020 S. Broadband Lane  
P.O. Box 5068  
Sioux Falls, SD 57117-5068  
Telephone: (605) 323-6500  
E-mail: [nass-sd@nass.usda.gov](mailto:nass-sd@nass.usda.gov)  
State Reports: [www.nass.usda.gov/sd/](http://www.nass.usda.gov/sd/)  
National reports: [www.nass.usda.gov/](http://www.nass.usda.gov/)



United States Department of Agriculture  
National Agricultural Statistics Service  
South Dakota Field Office

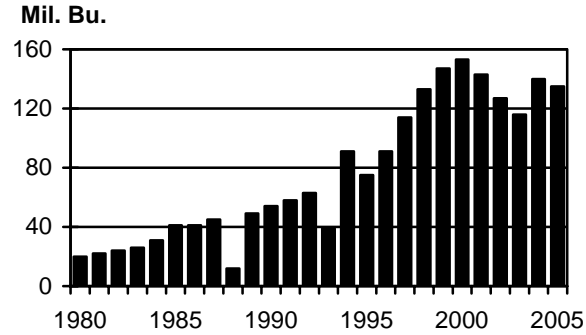


November 2006



**SOUTH DAKOTA**

**SOYBEAN PRODUCTION, 1980-2005**



**SOYBEANS**

Year	Plt. - 1,000 Acres -	Harv.	Yield Bu.	Prod. 1,000 Bu.
1980	780	770	26.0	20,020
1990	1,950	1,920	28.0	53,760
2000	4,400	4,370	35.0	152,950
2003	4,250	4,200	27.5	115,500
2004	4,150	4,120	34.0	140,080
2005	3,900	3,850	35.0	134,750

**SOYBEAN LEADING COUNTIES - 2005**

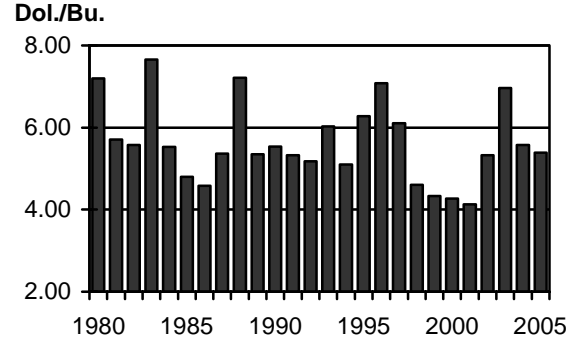
Rank	County	Production (Bu.)
1	Brown	12,033,000
2	Spink	8,788,000
3	Minnehaha	6,423,000
4	Roberts	5,889,000
5	Lincoln	5,113,000
6	Beadle	5,106,000
7	Kingsbury	5,084,000
8	Brookings	4,935,000
9	Edmunds	4,832,000
10	Union	4,539,000

**ACREAGE, YIELD & PRODUCTION:**

= Record High

**SOUTH DAKOTA**

**MARKETING YEAR AVERAGE PRICE.1980-2005**



**SOYBEAN MARKETING YEAR AVERAGE PRICE, VALUE, & RECEIPTS**

Year	Price per Bushel Dollars	Value of Production -- 1,000 Dollars --	Cash Receipts
1980	7.20	144,144	113,869
1990	5.54	297,830	267,879
2000	4.27	653,097	626,634
2003	6.96	803,880	824,083
2004	5.58	781,646	609,541
2005	5.39	726,303	735,812

**MONTHLY PRICES RECEIVED**

Month	2003	2004	2005
----- Dollars per Bushel -----			
Jan	5.33	7.37	5.34
Feb	5.41	8.08	5.44
Mar	5.48	9.14	5.83
Apr	5.66	9.54	6.00
May	5.92	9.61	6.11
Jun	5.95	9.12	6.47
Jul	5.63	8.04	6.36
Aug	5.40	6.35	5.87
Sep	5.83	5.73	5.51
Oct	6.47	5.32	5.45
Nov	6.95	5.21	5.40
Dec	7.04	5.28	5.51

**SOUTH DAKOTA**

**STOCKS OF SOYBEANS - ALL POSITIONS**

Year	Dec. 1/	March	June	Sept.
----- 1,000 Bushels -----				
1980	17,201	12,083	8,780	3,955
1990	28,250	17,490	11,716	4,863
2000	97,731	59,523	27,780	16,888
2003	87,984	50,282	25,311	5,120
2004	66,365	33,506	18,624	4,081
2005	94,607	58,961	28,992	9,523

1/ Previous year.

**STOCKS OF SOYBEANS - ON FARMS**

Year	Dec. 1/	March	June	Sept.
----- 1,000 Bushels -----				
1980	14,241	9,946	7,234	3,165
1990	21,000	14,000	10,000	4,000
2000	70,000	44,000	20,000	10,000
2003	62,000	35,000	17,000	2,500
2004	35,000	17,000	7,800	1,600
2005	65,000	42,000	20,500	5,800

1/ Previous year.

**STOCKS OF SOYBEANS - OFF FARMS**

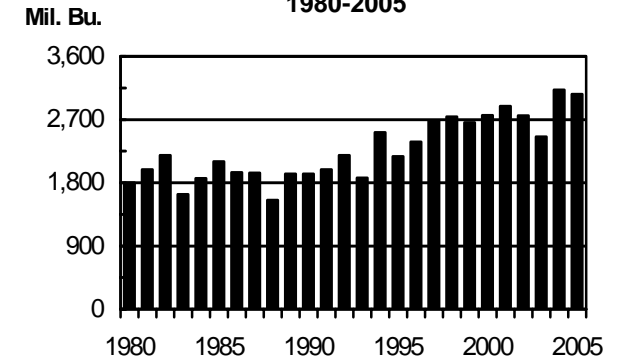
Year	Dec. 1/	March	June	Sept.
----- 1,000 Bushels -----				
1980	2,960	2,137	1,546	790
1990	7,250	3,490	1,716	863
2000	27,731	15,523	7,780	6,888
2003	25,984	15,282	8,311	2,620
2004	31,365	16,506	10,824	2,481
2005	29,607	16,961	8,492	3,723

1/ Previous year.



**UNITED STATES**

**SOYBEAN PRODUCTION, 1980-2005**



**UNITED STATES**

**PRODUCTION, ENDING STOCKS, AND MARKETING YEAR AVERAGE PRICE**

Year	Prod. -- Million Bushels --	September Stocks 1/	Price Dol. per Bu.
1980	1,798	313	7.60
1990	1,926	329	5.74
2000	2,578	248	4.54
2003	2,454	112	7.34
2004	3,124	256	5.74
2005	3,063	449	5.66

1/ Following year.

**SOYBEAN PRODUCTION RANKING - 2005**

Rank	State	Prod. (1,000 Bu.)
1	Iowa	525,000
2	Illinois	439,425
3	Minnesota	306,000
4	Indiana	263,620
5	Nebraska	235,330
6	Ohio	201,600
7	Missouri	181,670
8	South Dakota	134,750
9	Kansas	105,450
10	North Dakota	104,400