

## SOUTH DAKOTA

### TOTAL CHEESE PRODUCTION, EXCLUDING COTTAGE CHEESE

Year	Plants		Production
	Number		1,000 Lbs.
1980	16		78,836
1990	12		156,458
1999	7		136,433
2000	7		147,641
2001	6		146,897
2002	6		155,664
2003	6		151,635
2004	7		159,278

### AMERICAN & ITALIAN CHEESE PRODUCTION

Year	American		Italian	
	Plants	Production	Plants	Production
	Number	1,000 Lbs.	Number	1,000 Lbs.
1980	14	55,683	NA	NA
1990	10	49,991	5	105,132
1999	6	64,070	4	66,851
2000	6	73,572	4	71,103
2001	5	81,182	NA	NA
2002	5	77,151	3	73,444
2003	5	81,362	3	70,169
2004	NA	NA	NA	NA

NA = Not Available

### CHEDDAR CHEESE AND OTHER AMERICAN CHEESE PRODUCTION

Year	Cheddar		Other	
	Plants	Production	Plants	Production
	Number	1,000 Lbs.	Number	1,000 Lbs.
1980	14	31,454	6	24,229
1990	8	32,414	7	16,577
1999	5	43,244	4	20,826
2000	5	52,646	4	20,926
2001	5	60,307	3	20,875
2002	5	49,473	3	27,678
2003	5	52,739	3	28,623
2004	NA	NA	NA	NA

## UNITED STATES

### MILK PRODUCTION, RANKING OF TOP TEN STATES

Rank	State	2005 Milk Prod.
		Million Lbs.
1	CA	37,564
2	WI	22,866
3	NY	12,078
4	PA	10,503
5	ID	10,161
6	MN	8,195
7	NM	6,951
8	MI	6,735
9	TX	6,442
10	WA	5,608
<b>24</b>	<b>SD</b>	<b>1,437</b>

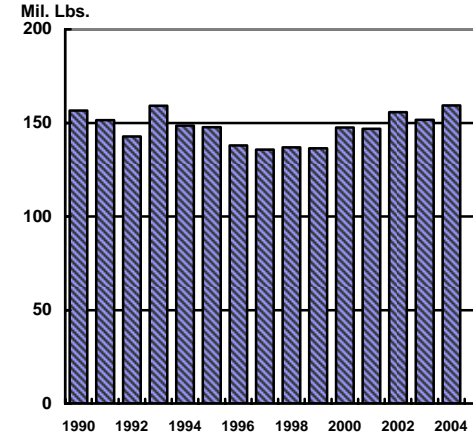
### CHEESE PRODUCTION, RANKING OF TOP TEN STATES

Rank	State	2004 Cheese Production 1/
		Million Lbs.
1	WI	2,357
2	CA	1,996
3	ID	718
4	NY	700
5	MN	624
6	PA	377
7	OH	182
<b>8</b>	<b>SD</b>	<b>159</b>
9	IA	155
10	MO	100

1/ Excluding cottage cheese

NOTE: Other dairy products are manufactured in South Dakota but are not shown to avoid disclosing individual information.

## SOUTH DAKOTA, CHEESE PRODUCTION



# DAIRY FACTS



USDA/NASS  
SOUTH DAKOTA FIELD OFFICE  
Carter Anderson, Director  
Steve Noyes, Deputy Director

5020 S. Broadband Lane  
P.O. Box 5068  
Sioux Falls, South Dakota 57117-5068

Telephone: (605) 323-6500  
E-mail: [nass-sd@nass.usda.gov](mailto:nass-sd@nass.usda.gov)  
State reports: <http://www.nass.usda.gov/sd/>  
National reports: <http://www.usda.gov/nass/>



USDA/NASS  
South Dakota Field Office

March 2006



**SOUTH DAKOTA  
CATTLE NUMBERS - JAN.1**

Year	All Cattle	All Cows That Have Calved	Milk Cows	Milk Cow Replacements
----- 1,000 Head -----				
1950	2,454	1,189	379	96
1960	3,262	1,531	281	55
1970	4,237	1,871	186	49
1980	4,010	1,685	158	48
1990	3,350	1,630	140	37
2000	3,900	1,830	96	40
2003	3,700	1,780	84	30
2004	3,650	1,790	79	35
2005	3,700	1,790	80	40
2006	3,750	1,800	81	45

----- = Record Low

**FARM NUMBERS**

Year	Total Farms	Cattle Farms	Dairy Farms
----- 1,000 -----			
1950	67.1	NA	NA
1960	58.4	48.0	30.5
1970	47.0	39.0	13.0
1980	38.5	29.0	6.8
1990	35.0	23.0	3.6
2000	32.4	20.0	1.5
2003	31.6	18.0	1.1
2004	31.6	17.5	1.0
2005	31.4	17.0	0.8

**MILK PRODUCTION**

Year	Annual Average Cows	Milk Produced Per Cow	Total Milk Production	Total Value
	Number	Lbs.	Mil. Lbs.	\$1,000
1950	333	4,210	1,402	52,996
1960	248	5,900	1,463	48,572
1970	183	8,623	1,578	75,902
1980	159	10,497	1,669	206,956
1990	140	12,257	1,716	233,080
2000	95	15,516	1,474	188,672
2003	82	16,220	1,330	178,220
2004	80	16,838	1,347	222,255
2005	81	17,741	1,437	NA

NA = NOT AVAILABLE

**SOUTH DAKOTA**

County And District	Milk Cows, Jan. 1 <sup>1/</sup>		2006 County Rank	# of Licensed Grade A & Grade B Milk Operations <sup>2/</sup> Jan. 2006
	2005	2006		
Butte	1,800			8
Dewey	300			*
Combined	200	1,500		
Northwest	2,300	1,500		
Brown	2,200	1,800	14	13
Campbell	1,000	700	24	13
Edmunds	1,600	1,400	15	11
Faulk	400			5
McPherson	800	700	24	12
Spink	500	500	29	*
Combined	400	500		
North Central	6,900	5,600		
Codington	4,800	4,300	6	42
Day	2,800	2,500	8	33
Deuel	4,900	4,900	4	27
Grant	8,500	8,900	2	45
Hamlin	2,300	2,600	7	23
Roberts	2,200	1,900	11	15
Combined	3,400	4,200		
Northeast	28,900	29,300		
Lawrence	400			*
Meade	600			*
Pennington	400	600	27	7
Combined		400		
West Central	1,400	1,000		
Aurora	200	200	34	*
Beadle	2,200	2,100	9	11
Brule	400			*
Hand	900	1,200	19	9
Hughes	200	200	34	*
Combined		200		
Central	3,900	3,900		
Brookings	7,300	12,100	1	34
Davison	800	900	21	12
Hanson	1,200	1,100	20	16
Kingsbury	300	500	29	5
Lake	500			6
McCook	1,800	1,400	15	19
Miner	500	700	24	7
Minnehaha	4,900	4,800	5	27
Moody	1,200	1,900	11	13
Sanborn	200			*
Combined		1,200		
East Central	18,700	24,600		
Bennett	200			--
Custer	300	300	33	*
Southwest	500	300		
Gregory	2,200	1,900	11	25
Tripp	700	400	31	9
South Central	2,900	2,300		
Bon Homme	1,200	800	22	14
Charles Mix	1,500	1,300	18	11
Douglas	1,500	1,400	15	22
Hutchinson	2,300	2,100	9	29
Lincoln	700	600	27	5
Turner	5,500	5,000	3	36
Union		800	22	8
Yankton	700	400	31	6
Combined	1,100	100		
Southeast	14,500	12,500		
State	80,000	81,000		618

SOURCE: <sup>1/</sup> USDA/NASS South Dakota Field Office, and <sup>2/</sup> South Dakota Department of Agriculture \* Denotes four or fewer licensed dairy operations

**SOUTH DAKOTA  
MILK PRODUCTION, BY QUARTER**

Year	Jan-Mar	Apr-Jun	Jul-Sep	Oct-Dec
----- Million Lbs. -----				
1950	289	448	402	263
1960	374	453	344	292
1970	390	453	395	340
1980	399	455	425	390
1990	420	451	428	417
2000	365	378	369	362
2003	333	339	332	326
2004	333	343	333	338
2005	350	371	358	358

**PRODUCTION PER COW, BY QUARTER<sup>1/</sup>**

Year	Jan-Mar	Apr-Jun	Jul-Sep	Oct-Dec
----- Thousand Lbs. -----				
1950	862	1,345	1,297	797
1960	1,485	1,810	1,395	1,190
1970	2,110	2,465	2,160	1,870
1980	NA	NA	NA	NA
1990	3,000	3,221	3,057	3,000
2000	3,910	4,010	4,050	4,050
2003	3,960	4,080	4,050	4,080
2004	4,160	4,230	4,160	4,230
2005	4,320	4,580	4,420	4,420

NA = Not Available <sup>1/</sup> Derived quarterly averages

**SOUTH DAKOTA  
ALL MILK SOLD TO PLANTS AND DEALERS**

Year	Quantity Sold	Price/Cwt.	Wholesale Cash
Mil. Lbs.		\$	\$1,000
1950	118	3.78	4,460
1960	680	3.32	22,576
1970	1,410	4.81	67,821
1980	1,635	12.40	202,740
1990	1,701	13.00	221,130
2000	1,461	12.80	187,008
2002	1,278	12.80	163,584
2003	1,319	13.40	176,746
2004	1,336	16.50	220,440

**CASH RECEIPTS**

Year	Total All Commodities	Milk, Wholesale	
		Total	% of Total
----- Million Dollars -----			
		-	%
1950	508	30	6
1960	597	37	6
1970	1,017	71	7
1980	2,721	204	7
1990	2,963	221	7
2000	3,731	187	5
2002	3,784	164	4
2003	4,228	177	4
2004	4,877	220	5

**MILK COWS AND MILK PRODUCTION, SOUTH DAKOTA, 1955-2005**

