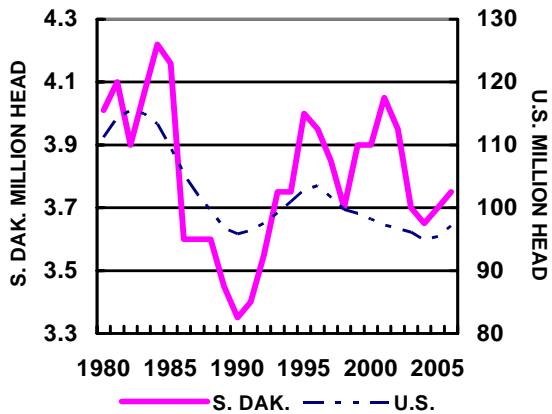
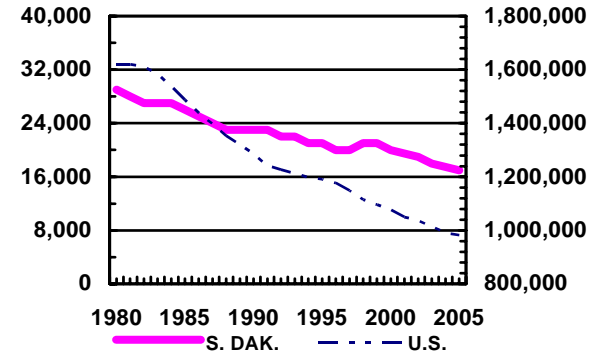


CATTLE INVENTORY, JAN. 1, 1980-2006



S.DAK. CATTLE OPERATIONS, 1980-2005 U.S.



SOUTH DAKOTA

CATTLE - JANUARY 1

Year	All Cattle	Value Per Head	Total Value
	1,000 Hd.	Dollars	1,000 Dol.
1980	4,010	500.00	2,005,000
1990	3,350	650.00	2,177,500
2000	3,900	790.00	3,081,000
2004	3,650	910.00	3,321,500
2005	3,700	1,020.00	3,774,000
2006	3,750	1,160.00	4,350,000

SOUTH DAKOTA

STEERS, BULLS, CALVES - JANUARY 1

Year	500# and Over		All Calves Under 500#
	Steers	Bulls	
----- 1,000 Head -----			
1980	377	80	1,403
1990	520	74	466
2000	710	95	405
2004	670	90	305
2005	710	85	260
2006	700	90	320

SOUTH DAKOTA

FARM NUMBERS

Year	All Farms	Cattle Operations	Number Of Feed-lots	1,000+ Capacity Feed-lots
----- Number -----				
1980	38,500	29,000	6,000	49
1990	35,000	23,000	4,200	63
2000	32,400	20,000	3,420	120
2003	31,600	18,000	3,252	152
2004	31,600	17,500	3,253	153
2005	31,400	17,000	3,164	164

COWS - JANUARY 1, AND CALVES BORN

Year	Beef Cows	Milk Cows	All Cows	Calves Born
----- 1,000 Head -----				
1980	1,527	158	1,685	1,750
1990	1,490	140	1,630	1,610
2000	1,734	96	1,830	1,850
2004	1,711	79	1,790	1,720
2005	1,710	80	1,790	1,720
2006	1,719	81	1,800	

CATTLE ON FEED, 1,000+ CAPACITY FEEDLOTS, 2005

Month	On Feed	Place-ments	Market-ings	Other Disappearance
Jan	192	41	26	2
Feb	205	32	26	1
Mar	210	31	34	2
Apr	205	27	31	1
May	200	28	38	4
Jun	186	26	48	3
Jul	161	15	30	3
Aug	143	24	34	1
Sep	132	40	40	2
Oct	130	68	35	2
Nov	161	63	33	1
Dec	190	46	28	3

CATTLE AND CALVES - INSHIPMENTS, FARM SLAUGHTER, DEATHS

Year	Inship-ments	Farm Slaughter	Deaths	
			Cattle	Calves
----- 1,000 Head -----				
1980	475	5	40	110
1990	442	3	50	100
2000	541	2	60	100
2003	519	2	55	95
2004	512	2	53	85
2005	565	2	53	85

HEIFERS - JANUARY 1

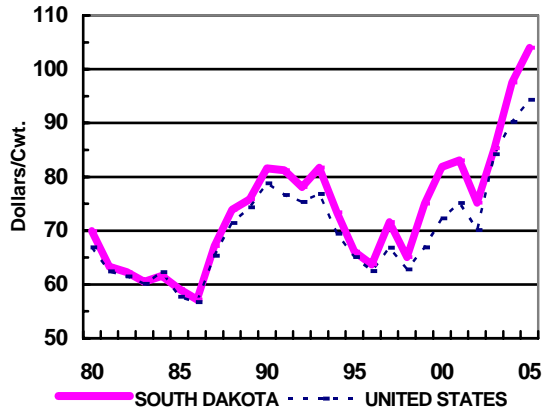
Year	Heifers 500# and Over		
	Beef	Milk	Other
----- 1,000 Head -----			
1980	208	48	209
1990	207	37	416
2000	280	40	540
2004	290	35	470
2005	295	40	520
2006	295	45	500

CATTLE AND CALVES - MARKETINGS

Year	Cattle	Calves
----- 1,000 Head -----		
1980	1,685	295
1990	1,439	410
2000	1,610	469
2003	1,665	482
2004	1,602	440
2005	1,645	450

[- - -] = Record Low

STEERS & HEIFERS AVERAGE PRICE, 1980-2005



SOUTH DAKOTA

ANNUAL AVERAGE PRICES RECEIVED

Year	Beef Cattle	Steers & Heifers	Calves
----- Dollars/Cwt. -----			
1980	66.00	69.90	82.90
1990	76.60	81.60	101.00
2000	75.50	81.80	108.00
2003	78.70	85.30	107.00
2004	89.30	97.50	125.00
2005	95.90	104.00	137.00

CASH RECEIPTS

Year	All Commodities	Cattle & Calves	Cattle & Calves - % of Total
----- Million Dollars -----		Percent	
1980	2,721	1,274	47
1990	2,963	1,261	43
2000	3,731	1,411	38
2003	4,180	1,509	36
2004	4,579	1,669	36
2005	4,863	1,845	38

SOUTH DAKOTA

MONTHLY PRICES RECEIVED

Month	Beef Cattle		Calves	
	2004	2005	2004	2005
----- Dollars/Cwt. -----				
Jan	84.40	95.90	114.00	131.00
Feb	80.00	95.60	111.00	132.00
Mar	85.80	98.50	118.00	137.00
Apr	86.10	99.30	116.00	138.00
May	89.30	93.90	122.00	135.00
Jun	89.60	90.50	134.00	139.00
Jul	85.50	80.30	125.00	129.00
Aug	90.90	87.70	143.00	132.00
Sep	97.20	97.90	134.00	139.00
Oct	103.00	110.00	130.00	141.00
Nov	94.20	104.00	129.00	143.00
Dec	86.00	94.90	127.00	143.00

CATTLE FACTS



**USDA - NASS
SOUTH DAKOTA FIELD OFFICE
Carter Anderson, Director
Steve Noyes, Deputy Director**

**5020 S. Broadband Lane
P.O.Box 5068
Sioux Falls, South Dakota 57117-5068**

**Telephone: (605) 323-6500
E-Mail: nass-sd@nass.usda.gov
State Reports: <http://www.nass.usda.gov/sd/>
National Reports: <http://www.nass.usda.gov/>**

United States Department of Agriculture
National Agricultural Statistics Service
South Dakota Field Office



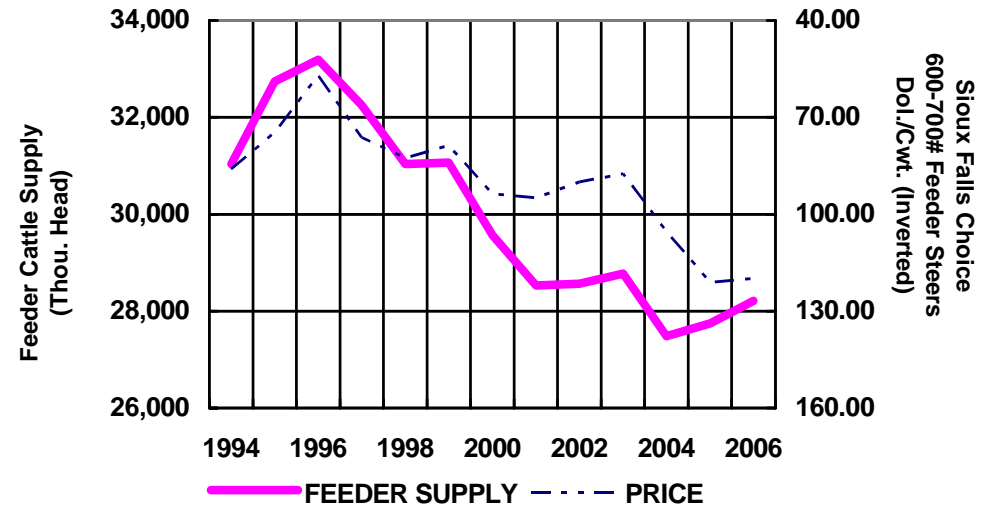
September 2006



**U.S. FEEDER CATTLE SUPPLY AND
SIOUX FALLS CHOICE FEEDER STEER PRICES**

Year	January 1 Inventory			S.F. Choice 600-700# Feeder Steers Jan. - June Average
	Steers & Other Heifers Over 500# Plus Calves	Cattle On Feed - U.S.	Feeder Cattle Supply Outside Feedlots	
	----- 1,000 Head -----			Dol./Cwt.
1994	44,063	13,024	31,039	86.06
1995	45,156	12,420	32,736	74.74
1996	46,147	12,958	33,189	57.05
1997	45,430	13,181	32,249	76.33
1998	44,641	13,608	31,033	82.53
1999	44,351	13,284	31,067	78.70
2000	43,645	14,073	29,572	93.63
2001	42,808	14,276	28,532	94.96
2002	42,614	14,050	28,564	89.95
2003	41,990	13,220	28,770	87.49
2004	41,293	13,813	27,480	105.33
2005	41,489	13,745	27,744	121.03
2006	42,345	14,132	28,213	119.87

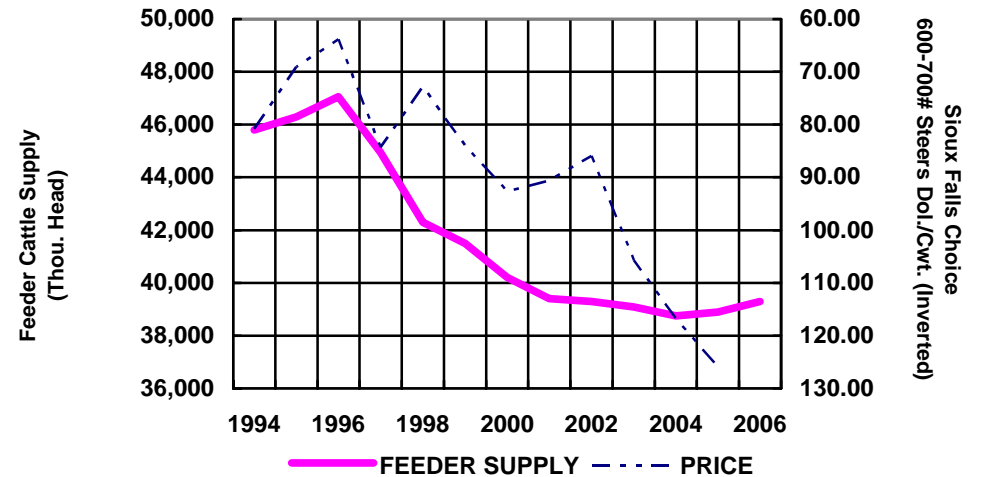
**JANUARY FEEDER SUPPLY VS.
JANUARY - JUNE AVERAGE PRICE**



**U.S. FEEDER CATTLE SUPPLY AND
SIOUX FALLS CHOICE FEEDER STEER PRICES**

Year	July 1 Inventory			S.F. Choice 600-700# Feeder Steers July - Dec. Average
	Steers & Other Heifers Over 500# Plus Calves	Cattle On Feed - U.S.	Feeder Cattle Supply Outside Feedlots	
	----- 1,000 Head -----			Dol./Cwt.
1994	54,000	10,500	43,500	80.86
1995	55,400	11,200	44,200	69.06
1996	54,900	9,800	45,100	63.87
1997	53,900	10,900	43,000	84.33
1998	53,300	11,000	42,300	72.81
1999	53,000	11,500	41,500	84.02
2000	52,600	12,400	40,200	92.64
2001	52,500	13,100	39,400	90.60
2002	51,800	12,500	39,300	85.99
2003	50,900	11,810	39,090	105.71
2004	50,550	11,800	38,750	116.72
2005	50,900	12,000	38,900	125.92
2006	51,800	12,500	39,300	

**JULY FEEDER SUPPLY VS.
JULY - DECEMBER AVERAGE PRICE**

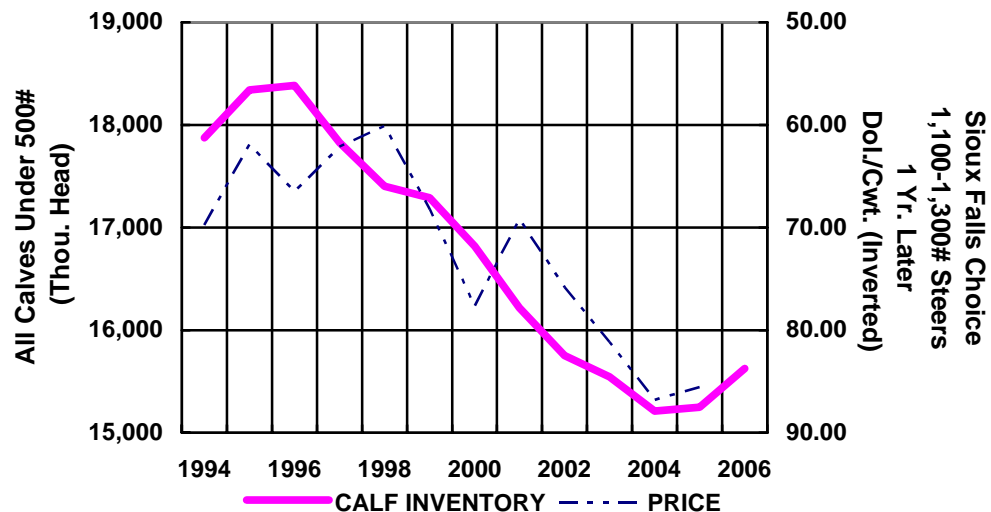


**U.S. CALVES UNDER 500 POUNDS
& SIOUX FALLS PRICE OF CHOICE STEERS, 1,100 - 1,300 POUNDS**

Year	Quarter	Jan. 1 or July 1 Inventory of Calves Under 500 Pounds	Steers 1,100-1,300# 1 Yr. Later 1/	
			Price	Actual Period
1994	J-M	1,000 Head	Dol./Cwt.	J-M 1995
	A-J	17,873	69.75	A-J
	J-S	--	63.85	J-S
	O-D	31,300	61.29	O-D
1995	J-M	18,341	64.38	J-M 1996
	A-J	--	61.92	A-J
	J-S	32,000	58.89	J-S
	O-D	--	65.49	O-D
1996	J-M	18,384	69.99	J-M 1997
	A-J	--	66.50	A-J
	J-S	31,700	65.95	J-S
	O-D	--	64.86	O-D
1997	J-M	17,826	65.65	J-M 1998
	A-J	--	62.12	A-J
	J-S	30,900	53.35	J-S
	O-D	--	58.53	O-D
1998	J-M	17,401	58.98	J-M 1999
	A-J	--	60.15	A-J
	J-S	30,600	64.45	J-S
	O-D	--	64.10	O-D
1999	J-M	17,290	68.93	J-M 2000
	A-J	--	68.23	A-J
	J-S	30,500	72.19	J-S
	O-D	--	64.83	O-D
2000	J-M	16,816	70.92	J-M 2001
	A-J	--	77.67	A-J
	J-S	30,200	76.42	J-S
	O-D	--	69.75	O-D
2001	J-M	16,216	64.71	J-M 2002
	A-J	--	69.19	A-J
	J-S	29,700	67.38	J-S
	O-D	--	62.54	O-D
2002	J-M	15,753	66.95	J-M 2003
	A-J	--	75.83	A-J
	J-S	29,400	77.75	J-S
	O-D	--	80.92	O-D
2003	J-M	15,545	100.84	J-M 2004
	A-J	--	81.17	A-J
	J-S	29,000	87.76	J-S
	O-D	--	82.23	O-D
2004	J-M	15,210	81.73	J-M 2005
	A-J	--	86.79	A-J
	J-S	28,800	88.22	J-S
	O-D	--	80.23	O-D
2005	J-M	15,250	88.86	J-M 2006
	A-J	--	84.20	A-J
	J-S	29,000	77.07	J-S
	O-D	--	--	--
2006	J-M	15,626	--	--
	A-J	--	--	--
	J-S	29,200	--	--

1/ Beginning in 2006, steers are 1,000+ pounds.

**JANUARY 1 INVENTORY VS.
PRICE ONE YEAR LATER**



**JULY 1 INVENTORY VS.
PRICE ONE YEAR LATER**

