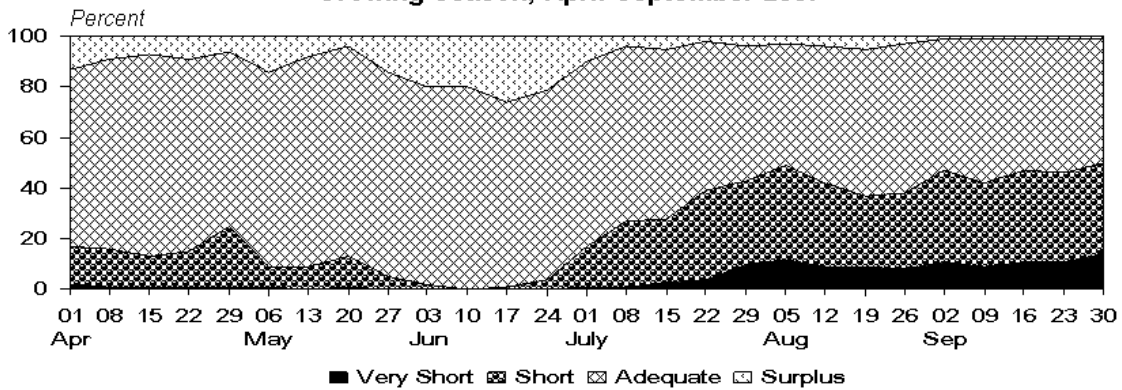


## Crop & Weather Data, 2007

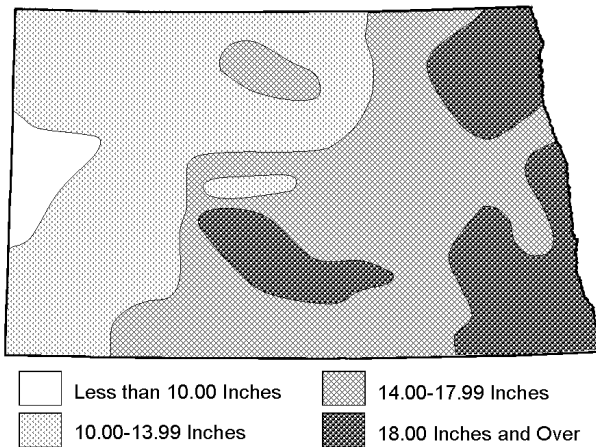
### Growing Season Highlights

- Planting began behind the five-year (2002-2006) average for all crops except for dry edible beans, soybeans and sunflowers. The statewide average starting date for fieldwork was April 21. Rain and thunderstorms slowed planting progress. Planting for most crops was nearly complete by the second week of June.
- All crops were rated mostly good to excellent through early June. In all areas of the state, moisture was very beneficial for pasture and ranges, especially in last year's drought stricken areas. During late June and into July, above normal temperatures and only scattered precipitation produced heat stress in crops. On August 26, multiple tornados and hail were reported in storm affected areas.
- Small grain harvest began on July 22, near the average pace. As of September 2, barley and oats were virtually complete while spring wheat and durum wheat were both behind last year but ahead of average.
- The 2007 crop year saw above average rainfall through mid-June as all weather stations, except Dickinson, received greater than normal precipitation. Above normal temperatures and dry conditions were dominant during the summer months depleting soil moisture supplies.
- Above average temperatures during the first two weeks of October allowed producers to make excellent progress harvesting late season crops. A statewide killing frost finally occurred the week ending October 28 which aided the dry down process of corn and sunflowers. Harvest of corn and sunflowers was virtually complete by November 18.

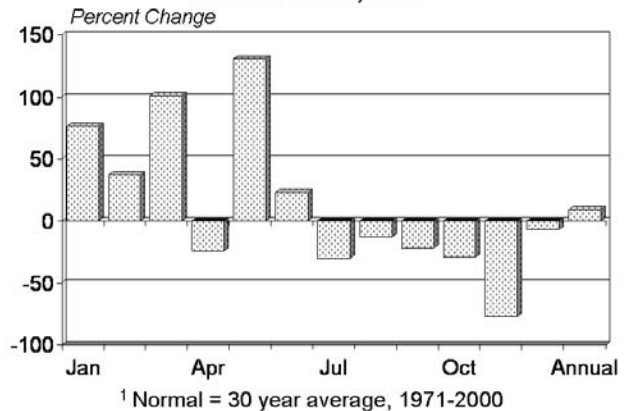
**Topsoil Moisture Supplies  
Growing Season, April-September 2007**



**Growing Season Precipitation  
April-September, 2007**



**Precipitation: Departure from Normal <sup>1</sup>  
North Dakota, 2007**



## Monthly Precipitation: North Dakota, 2007

Districts and Stations	Jan	Feb	Mar	Apr	May	June	July	Aug	Sept	Oct	Nov	Dec	Annual
	<i>Inches</i>	<i>Inches</i>	<i>Inches</i>	<i>Inches</i>	<i>Inches</i>	<i>Inches</i>	<i>Inches</i>	<i>Inches</i>	<i>Inches</i>	<i>Inches</i>	<i>Inches</i>	<i>Inches</i>	<i>Inches</i>
Crosby	0.14	0.54	0.63	0.26	5.64	2.54	0.92	1.22	1.27	2.09	0.33	0.14	15.72
Kenmare 1 WSW	0.19*	1.11	1.74*	0.68	5.94 *	3.57 *	1.25	M	0.67	0.85	0.02*	0.31*	16.33*
Minot Exp Station	0.17	0.52	2.03	0.67	8.65	4.69	0.98	0.72	0.70	0.53	0.23	0.29	20.18
Stanley 3 NNW	0.26	0.55	1.44	1.11	4.29	3.40	1.36	0.78	0.87	1.03	0.34	0.26	15.69
Wildrose 3 NW	0.28	0.56	1.08	0.27	5.08	3.47	1.34	0.79	0.64	1.70	0.27	0.26	15.74
Williston Exp Farm	0.08	0.54	0.75	0.26	4.95	2.64	1.13	0.45	0.85	1.18	0.18	0.04	13.05
<b>NORTHWEST</b>	0.14	0.69	1.06	0.46	5.30	3.49	1.23	0.74	0.71	1.05	0.21	0.15	15.23
Bottineau	0.22	0.21	2.02	0.08	3.49	4.10	1.40	1.06	0.41	0.40	0.50	0.54	14.43
Rugby	0.25	0.55	0.12*	0.27 *	7.87	3.49	2.59*	1.81	0.84	0.26	0.11	0.16	18.32*
Towner 2 NE	0.12	0.18	0.92*	0.20	6.56	3.26	1.05	2.69 *	0.72	0.03	0.34	0.28	16.35*
Upham 3 N	0.24	0.23	1.45	0.41	4.20	5.68	2.09	1.64	0.42	0.27	0.52*	0.38	17.53*
Velva 3 NE	0.12*	0.42	1.72	0.40	5.90	2.84	0.76*	0.86 *	1.04*	0.30*	0.40*	0.20	14.96*
Westhope	0.21	0.48	1.64	0.29	5.21	4.43	1.40	0.59	0.56	0.43	0.41	0.23	15.88
<b>NORTH CENTRAL</b>	0.19	0.35	1.47	0.24	5.35	3.73	1.97	1.29	0.61	0.28	0.26	0.36	16.10
Cavalier 7 NW	0.04	M	2.14	0.59	5.64	6.26	4.53	1.04	0.69	2.44	0.38	0.48	24.23*
Devils Lake KDLR	0.12	M	1.27	0.23	6.11	2.55	4.56	1.96	M	0.71	0.43	0.74*	18.68*
Grand Forks Intl AP	0.22	0.60	2.30	0.47	5.12	4.19	1.50	1.79	0.80	3.09	0.26	0.75	21.09
Hansboro 4 NNE	0.02	M	2.40	0.09	5.04	6.88	3.22	0.81	0.71	0.39	0.00*	0.85	20.41*
Langdon Exp Farm	0.09	M	1.83	0.70	5.81	4.46	4.78	0.95	0.93	1.44	0.37	0.74	22.10*
Petersburg 2 N	0.13*	M	0.86*	0.61 *	5.71	3.37	4.78	3.56	0.71	1.72	0.74	1.02	23.21*
<b>NORTHEAST</b>	0.13	0.69	2.06	0.52	5.70	4.89	3.60	1.86	0.81	1.96	0.41	0.84	23.47
Center 4 SE	0.03*	0.41*	0.92*	1.02 *	9.67	3.57	0.47	2.37 *	1.39	0.14	0.06	0.20*	20.25*
Dickinson Ranch HQ	0.12	1.21	1.70	1.58	4.64	1.80	1.05	0.78	0.76	0.26	0.01	0.03	13.94
Killdeer	0.09	0.75	0.97	1.66	3.69	1.87	1.62	1.45	1.02	0.54	0.09	0.05	13.80
Turtle Lake	0.25	0.45	1.27	1.13	6.83 *	3.91	1.02	1.86	0.96	0.31	0.10	0.12	18.21*
Washburn	0.03*	0.64	0.99	1.04	7.31	2.66	0.64	2.59 *	1.12	M	0.37*	0.16	17.55*
Watford City	0.22	0.79	1.12	1.07	4.07	1.39	0.83	1.18	0.56	1.37	0.24	0.08	12.92
<b>WEST CENTRAL</b>	0.17	0.70	1.21	1.22	5.46	2.46	1.02	1.46	0.84	0.56	0.11	0.11	15.32
Harvey 4NE	0.10*	0.64	0.73*	0.23	5.13	4.80	1.73*	2.22	0.76	0.15	T	0.15	16.64*
Jamestown Municipal AP	0.02	0.47	1.69	0.46	4.17	6.65	1.37	0.54	2.28	2.13	0.08	0.25	20.11
McClusky	0.18	0.38	0.94	0.84	5.82	3.84	1.16	0.93	1.21	0.17	0.19*	0.25	15.91*
McHenry 3 W	0.25	0.67*	2.28	0.46	5.74 *	3.87	3.94	2.64	1.27	1.15	0.11	0.66	23.04*
Steele 3 N	0.08*	1.04*	2.35	0.70	6.04	3.90	1.08	1.47	1.86	0.58	0.19	0.31	19.60*
<b>CENTRAL</b>	0.11	0.57	1.96	0.61	5.29	4.32	2.34	1.88	1.59	0.83	0.09	0.29	19.88
Casseltown Agronomy Frm	0.02	M	2.04	2.57	4.30	4.13	1.13	1.63	3.82	2.06	0.10	M	21.80*
Cooperstown	0.03	M	1.90	0.85	4.97	5.41	1.86	1.10	1.93	2.15	0.14	0.85	21.19*
Fargo Hector Intl AP	0.10	0.73	2.18	3.16	3.87	5.78	1.20	2.39	3.39	1.76	0.09	1.59	26.24
Mayville	0.13	M	1.91	1.54	5.86	5.05	1.96	1.71	2.44	2.14	0.21	0.99	23.94*
<b>EAST CENTRAL</b>	0.05	0.73	2.03	1.89	4.81	5.58	1.92	1.61	2.82	1.92	0.14	1.05	24.55
Bowman	0.11	0.96	1.57	1.74	3.47	5.39	1.09	1.19	1.04	0.38	0.17	0.17	17.28
Dickinson Exp Station	0.10*	0.54*	0.56	1.41 *	4.16	1.64	1.11	1.64	1.40	0.43	0.02	0.13	13.14*
Hettinger Exp Station	T	0.64	1.54	1.09	5.97	3.04	1.62	3.65	0.48	0.35	0.17	0.26*	18.81*
Mott	0.03	0.77*	1.24*	1.32	3.36	4.09	0.67	6.79	1.23	0.41	T	0.29	20.20*
New England	0.06	0.53	1.96	1.45	4.04	2.98	0.67	1.75	1.31	0.36	0.16	0.04*	15.31*
Richardton Abbey	0.11	0.42*	1.27	1.04	3.57	2.22	0.44	1.57	1.29	0.62	T	0.13*	12.68*
<b>SOUTHWEST</b>	0.05	0.62	1.27	1.29	4.24	2.43	1.67	2.05	1.03	0.49	0.08	0.12	15.34
Bismarck Municipal AP	0.13	0.75	1.18	0.80	5.42	3.32	1.25	3.26	1.77	0.83	0.13	0.23	19.07
Hazleton 4 NW	0.15	0.74	1.90	1.40	6.17	3.28	1.56	4.16	1.87	1.24	0.04	0.27	22.78
Mandan Exp Station	0.13	0.62	1.06	0.67	5.19	4.67	1.42	4.45	1.61	0.50	0.07	0.16	20.55
New Salem 5 NW	0.12	0.52	0.78	0.75	5.78	2.92	1.21	1.73	1.32	0.12	0.04	0.18	15.47
Pretty Rock	0.02	0.64	1.27	1.17	5.34	4.96	0.73	4.27	1.16	0.37	0.03	0.23	20.19
Wilton	0.48*	0.62*	M	0.96	7.88	4.73	1.20	2.31	1.58	0.22	0.31	0.33*	20.62*
<b>SOUTH CENTRAL</b>	0.10	0.64	1.44	1.04	5.59	3.90	1.21	3.28	1.57	0.60	0.13	0.26	19.76
Ashley	0.20	0.66	1.82*	1.47	6.20	4.07 *	2.70	3.80	M	1.77	0.10	0.48*	23.27*
Fullerton 1 ESE	0.10	1.13	2.21	1.97	6.69	3.75	1.72	2.88	2.40	1.19	0.32	0.47	24.83
Lidgerwood	0.14	M	1.99	3.57	4.50	6.38	2.76	2.25	2.00	1.43	0.06	0.95	26.03*
Lisbon	0.05*	M	1.96	2.49	6.05	5.34 *	2.57	1.42	2.57	1.48	0.00*	0.63*	24.56*
Napoleon	0.19	0.62	1.99	0.72	6.56	2.90	1.33	3.49	2.39	1.02	0.18	0.21	21.60
Oakes 2 SR	0.09	1.10	1.52*	2.26	7.07 *	5.17 *	3.51	2.65 *	1.73	1.08	0.15	M	26.33*
<b>SOUTHEAST</b>	0.13	0.66	2.15	2.38	6.49	4.85	2.52	2.55	2.31	1.46	0.10	0.48	26.08
<b>STATE</b>	0.12	0.63	1.63	1.07	5.36	3.96	1.94	1.86	1.37	1.02	0.17	0.41	19.54

Source: National Climatic Data Center. \* = Partially estimated. T = Trace. M = Missing.

# 16 Temperature

## Monthly Temperature: North Dakota, 2007

Districts and Stations	Jan	Feb	Mar	Apr	May	June	July	Aug	Sept	Oct	Nov	Dec	Annual
	°F	°F	°F	°F	°F	°F	°F	°F	°F	°F	°F	°F	°F
Crosby	15.9	7.6	34.7	42.5	56.3	65.3	73.9	66.9	57.5	46.4	28.4	11.7	42.3
Kenmare 1 WSW	14.4*	6.8	31.3	40.4	54.2	63.8	73.2	M	56.9	44.4	27.5	12.7	35.5*
Minot Exp Station	13.6	6.7	32.1	41.3	54.9	65.4	73.8	65.8	58.7	46.0	28.7	12.7	41.6
Stanley 3 NNW	11.4	4.6	30.1	39.2	52.9	61.7	71.6	64.6	56.0	43.6	27.4	11.7	39.6
Wildrose 3 NW	11.4	4.7	30.9	39.4	53.0	62.7	71.4	64.6	55.1	43.1	26.8	11.5	39.6
Williston Exp Farm	20.0	13.0	39.9	44.6	58.9	67.6	77.3	71.7	62.0	49.4	33.2	18.4	46.3
<b>NORTHWEST</b>	14.0	7.1	32.5	41.0	54.8	64.4	73.6	66.6	57.7	45.4	28.7	13.1	41.6
Bottineau	7.7	2.3	28.3*	41.3	54.1	64.1	72.1	64.8	56.6	45.0	24.9	7.9	39.1*
Rugby	8.1	2.8	28.0	40.8	53.8	65.1	71.5	63.6	56.0	44.2	26.2	8.1	39.0
Towner 2 NE	8.7	3.6	29.1	41.2	54.1	64.6	72.5	63.9	56.8	44.6	26.9	8.4	39.5
Upham 3 N	8.9	2.8	28.8	41.6	55.2	64.6	72.1	64.1	56.6	44.2	25.6	8.2	39.4
Velva 3 NE	12.7*	4.6	31.4*	39.6	54.7	62.3	71.6	63.0	57.4	43.1*	28.8	11.9	40.1*
Westhope	10.1	4.2	31.5	43.2	57.5	66.2	73.0	67.0	59.6	46.2	27.7	9.9	41.3
<b>NORTH CENTRAL</b>	9.0	2.6	28.0	40.2	54.2	63.6	71.2	63.9	56.7	44.3	26.2	8.2	39.0
Cavalier 7 NW	8.5	M	24.3	39.7	54.4	64.4	69.8	63.3	56.1	46.1	27.5	5.2	38.3*
Devils Lake KDLR	11.4	M	28.6	42.0	55.7	66.8	72.9	65.0	M	46.8	27.6	9.5	35.5*
Grand Forks Intl AP	10.3	3.2	26.5	40.9	56.6	66.6	71.4	65.4	58.1	47.0	28.4	7.2	40.1
Hansboro 4 NNE	7.0	M	26.6*	39.2	50.5	64.2	70.4	62.2	57.1	45.1	25.9	9.2	38.1*
Langdon Exp Farm	6.0	M	22.4	39.1	52.3	63.3	69.3	62.9	54.7	43.7	24.8	5.7	37.0*
Petersburg 2 N	7.9	M	24.6	39.9	54.8	65.3	70.3	64.2	56.3	45.5	26.5	6.4	38.5*
<b>NORTHEAST</b>	7.7	4.0	25.2	39.8	54.4	65.2	70.5	63.9	56.4	45.6	26.7	6.7	38.8
Center 4 SE	18.0	10.8*	37.0	42.5	57.1	66.2	75.1	67.3	59.5	47.9*	32.1*	17.6	44.3*
Dickinson Ranch HQ	19.5	12.6	35.7	39.5	54.0	64.8	76.1	67.7	58.0	45.5	31.3	18.5	43.6
Killdeer	19.0*	13.6	36.9	41.4	55.5	64.4	75.7	68.8	59.0	46.2	31.9	19.0	44.3*
Turtle Lake	12.1	6.6	31.9	40.6	55.5	65.5	74.2	66.6	58.8	45.9	28.2	13.0	41.6
Washburn	14.6	8.4	34.4	41.0	55.9	65.7	74.8	66.4	60.0	47.0	31.0	16.1	42.9
Watford City	17.2	11.6	35.8*	41.5	54.6	65.1	76.0	68.1	58.5	46.9	31.3	18.6	43.8*
<b>WEST CENTRAL</b>	16.4	10.0	35.2	41.2	55.2	64.8	75.0	67.4	58.9	46.5	30.4	16.1	43.1
Harvey 4NE	10.0	4.0	29.7	41.0	55.9	65.0	72.4	64.9	56.6	45.1	26.8	9.9	40.1
Jamestown Municipal AP	11.8*	5.9	31.4	40.4	57.2	66.9	72.4	65.0	58.4	47.0	29.6	11.3	41.4*
McClusky	15.7	9.4	34.9	42.6	57.6	67.3	75.1	68.2	62.2	47.5	30.8	14.9	43.9
McHenry 3 W	9.8	4.2	28.8	41.1	57.3	66.4	72.3	65.1	58.7	46.8	29.0	9.6	40.8
Steele 3 N	11.6	6.3	33.4	40.7	57.3	65.8	73.0	66.2	60.3	46.7	29.6*	13.9	42.1*
<b>CENTRAL</b>	11.4	6.0	31.5	40.7	56.6	66.0	72.7	65.5	58.9	46.7	29.7	11.7	41.5
Casselon Agronomy Frm	10.8	M	30.0	40.9	59.2	68.7	72.9	66.2	59.5	49.5	30.7	M	40.7*
Cooperstown	8.8	M	28.5	40.2	56.1	65.6	69.9	63.7	56.9	46.2	28.4	8.7	39.4*
Fargo Hector Intl AP	13.1	6.5	31.6	42.9	60.4	69.9*	74.0	67.2	60.6	50.0	31.2	10.3	43.1*
Mayville	10.0	M	27.8	40.9	57.5	67.9	71.2	64.7	58.1	47.8	29.3	7.5	40.2*
<b>EAST CENTRAL</b>	10.4	6.5	29.4	41.1	58.1	67.9	72.2	65.6	58.7	48.3	29.8	9.4	41.5
Bowman	20.7	15.2	37.5	40.4	55.8	64.8	75.9	69.3	59.2	46.8	32.1	19.9	44.8
Dickinson Exp Station	18.5	14.0	36.0	39.7	54.4	64.1	75.0	68.2	58.5	45.6	31.1	18.3	43.6
Hettinger Exp Station	20.9	16.1	38.1	40.2	56.2	64.7	75.0*	69.0	60.6	47.3	32.6	20.2	45.1*
Mott	19.5	14.3	37.4	40.3	56.5	64.5	75.5	68.1	58.7	46.3	30.6	18.2	44.2
New England	21.5	15.5	38.6	40.8	57.2	65.2	75.0	68.8	59.4	46.3	32.1	19.8	45.0
Richardton Abbey	21.2	13.3	38.5*	41.6	57.2	66.7	76.4	70.0	61.4	48.9	32.5	19.7	45.6*
<b>SOUTHWEST</b>	20.4	14.8	38.1	40.5	56.0	65.0	75.5	69.0	59.3	46.9	32.1	19.3	44.7
Bismarck Municipal AP	14.7	9.0	36.6	42.1	57.4	67.0	75.5	67.2	59.5	47.0	31.1	15.1	43.5
Hazleton 4 NW	12.6	6.8	33.2	39.3	55.4	64.2	72.3	65.5	58.2	45.9	29.7	15.2	41.5
Mandan Exp Station	15.5	9.4	35.2	41.3	56.8	66.2	74.7	66.9	59.5	46.4	31.2	14.6	43.1
New Salem 5 NW	15.2	9.2	34.2	39.8	55.4	64.3	74.2	66.9	59.4	46.4	30.2	15.5	42.6
Pretty Rock	21.7	13.8	39.3	41.0	58.0	65.9	75.4	69.6	60.4	47.9	31.7	19.4	45.3
Wilton	13.5*	6.7	M	40.2	54.8	64.4	72.3	65.2	58.0	45.8	29.4*	14.0*	38.7*
<b>SOUTH CENTRAL</b>	16.5	10.2	36.0	40.5	56.4	65.3	74.5	67.2	59.3	47.1	31.1	16.1	43.4
Ashley	12.9	8.0	33.7*	39.6	58.6	66.7	74.1	67.6	60.5	47.9	31.3	15.5	43.0*
Fullerton 1 ESE	12.4	10.2	34.8	41.1	60.9*	68.5	73.1	67.4	61.3	49.2	31.5	12.5	43.6*
Lidgerwood	14.1*	M	31.6	41.0	59.9	69.0	74.1	67.5	61.3	50.1	32.2	12.0	42.7*
Lisbon	11.0	M	32.4*	40.4	59.0	69.3	73.2	66.6	59.7*	48.4	30.1*	10.4	41.7*
Napoleon	11.0	5.7	32.8*	39.6	57.1	65.3*	73.8	66.4	59.3	47.4	29.7	14.7	41.9*
Oakes 2 SR	8.8	5.0	M	39.3	58.6	68.2	72.5	66.2	59.0	48.6	30.0	M	38.0*
<b>SOUTHEAST</b>	11.7	7.3	32.8	40.6	59.0	68.0	73.5	67.0	60.2	48.3	30.5	12.2	42.6
<b>STATE</b>	13.1	7.6	32.1	40.6	56.1	65.6	73.2	66.2	58.5	46.6	29.5	12.5	41.8

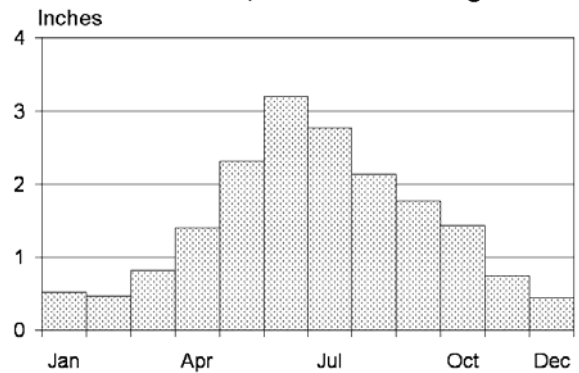
Source: National Climatic Data Center \* = Partially estimated. M = Missing.

### Growing Season Average

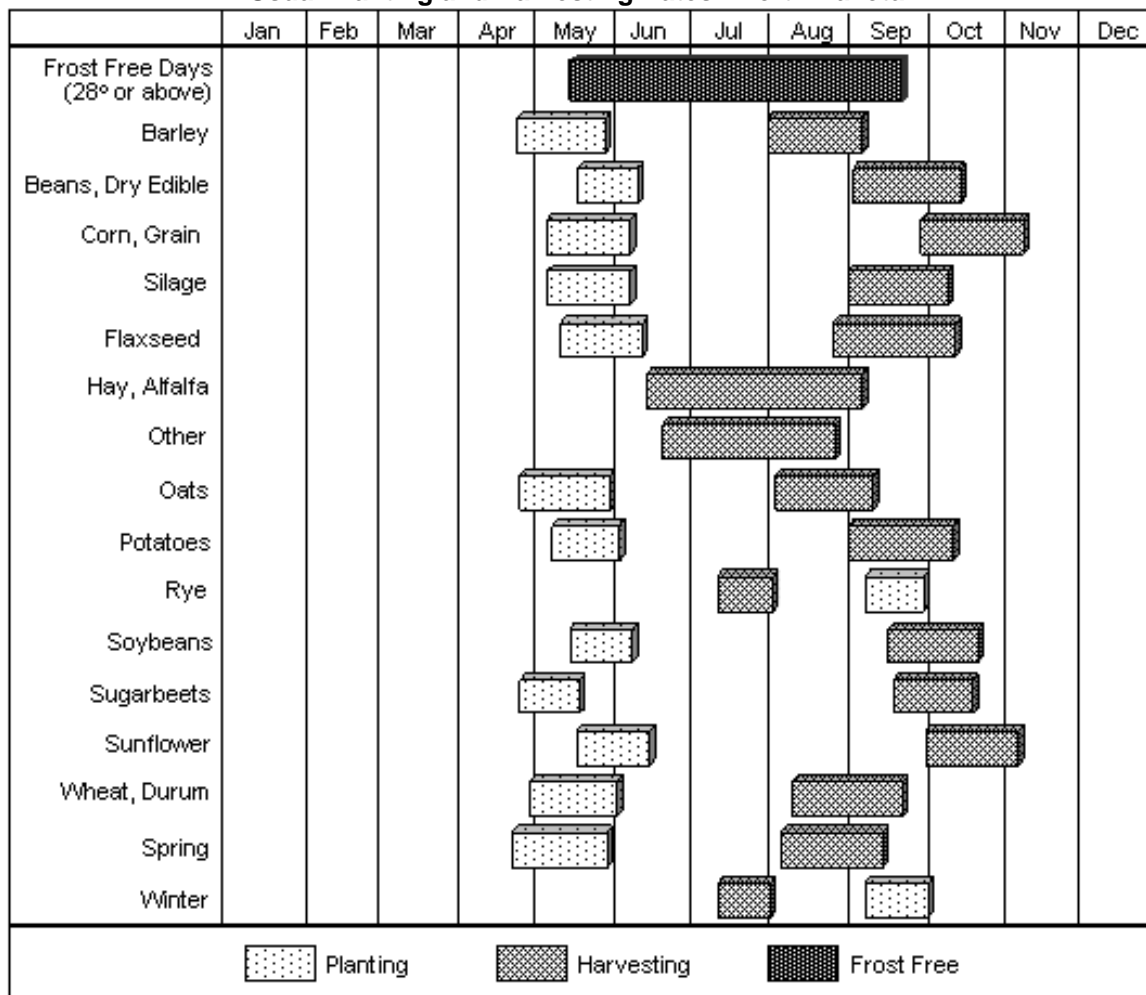
**Growing Season Precipitation  
April-September, 1971-2000 Average**



**Monthly Precipitation  
North Dakota, 1971-2000 Average**



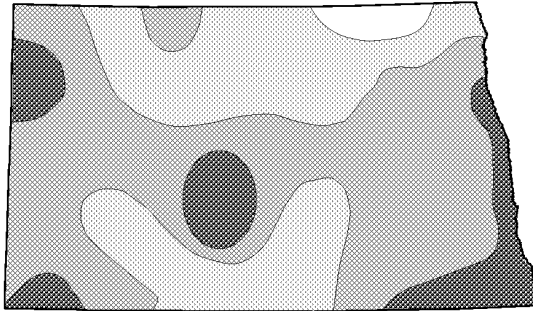
**Usual Planting and Harvesting Dates: North Dakota**



Source: Usual Planting and Harvesting Dates for US Field Crops, USDA/NASS, December 1997.

### Growing Season Average

Number of Days Above 32°F  
Long Term Average <sup>1</sup>



Number of Days Above 28°F  
Long Term Average <sup>1</sup>



### Length of Growing Season at Temperatures of 28°F and 32°F or above: North Dakota <sup>1</sup>

Station	County	Average Date of Last Spring Frost		Average Date of First Frost in Fall		Average Number of Days in Growing Season		Number of Years in Average
		28° Date	32° Date	32° Date	28° Date	32° Days	28° Days	
<b>NORTHWEST</b>								
Crosby	Divide	May 10	May 18	Sept 16	Sept 23	120	137	63
Minot Exp.	Ward	May 12	May 20	Sept 17	Sept 26	119	137	69
Mohall	Renville	May 11	May 18	Sept 16	Sept 23	122	135	44
Parshall	Mountrail	May 15	May 21	Sept 12	Sept 18	114	126	59
Powers Lake	Burke	May 15	May 23	Sept 11	Sept 23	111	133	41
Williston	Williams	May 4	May 13	Sept 22	Sept 28	132	146	78
<b>NORTH CENTRAL</b>								
Bottineau	Bottineau	May 15	May 21	Sept 15	Sept 23	116	130	70
Granville	McHenry	May 13	May 19	Sept 15	Sept 25	119	134	65
Maddock	Benson	May 15	May 23	Sept 13	Sept 21	113	129	53
Towner	McHenry	May 14	May 21	Sept 12	Sept 21	114	129	54
<b>NORTHEAST</b>								
Grafton	Walsh	May 9	May 18	Sept 19	Sept 25	123	139	70
Grand Forks	Grand Forks	May 6	May 16	Sept 23	Sept 29	130	146	66
Hansboro	Towner	May 17	May 27	Sept 11	Sept 18	106	124	65
Langdon Exp.	Cavalier	May 17	May 28	Sept 13	Sept 21	109	126	69
Pembina	Pembina	May 12	May 21	Sept 17	Sept 25	119	135	70
<b>WEST CENTRAL</b>								
Dunn Center	Dunn	May 12	May 17	Sept 18	Sept 27	122	137	50
Garrison	McLean	May 8	May 18	Sept 19	Sept 25	124	139	62
Washburn	McLean	May 6	May 13	Sept 24	Oct 1	137	148	26
Watford City	McKenzie	May 7	May 13	Sept 19	Sept 27	127	141	34
<b>CENTRAL</b>								
Fessenden	Wells	May 8	May 17	Sept 18	Sept 26	123	140	40
Jamestown	Stutsman	May 5	May 15	Sept 20	Sept 29	128	146	73
McClusky	Sheridan	May 11	May 20	Sept 18	Sept 26	120	137	54
Pettibone	Kidder	May 13	May 22	Sept 12	Sept 17	111	124	46
<b>EAST CENTRAL</b>								
Amenia	Cass	May 6	May 15	Sept 23	Sept 28	130	144	73
Cooperstown	Griggs	May 11	May 21	Sept 19	Sept 26	121	138	49
Fargo	Cass	May 4	May 12	Sept 26	Oct 2	137	151	66
Mayville	Trail	May 8	May 17	Sept 24	Oct 2	129	147	57
<b>SOUTHWEST</b>								
Beach	Golden Valley	May 12	May 20	Sept 18	Sept 27	121	138	58
Bowman	Bowman	May 6	May 14	Sept 21	Sept 30	130	146	52
Dickinson Exp.	Stark	May 12	May 19	Sept 14	Sept 22	117	132	72
Hettinger	Adams	May 11	May 18	Sept 20	Sept 27	124	137	36
Marmarth	Slope	May 11	May 16	Sept 15	Sept 23	122	136	43
<b>SOUTH CENTRAL</b>								
Carson #2	Grant	May 11	May 19	Sept 15	Sept 24	119	135	59
Mandan Exp.	Morton	May 7	May 12	Sept 23	Sept 28	133	144	59
<b>SOUTHEAST</b>								
Edgeley Exp.	LaMoure	May 11	May 18	Sept 19	Sept 28	123	139	66
Lisbon	Ransom	May 10	May 19	Sept 20	Sept 27	123	139	64
McLeod	Ransom	May 9	May 15	Sept 22	Sept 29	129	143	62
Napoleon	Logan	May 14	May 21	Sept 16	Sept 23	118	132	72
Oakes	Dickey	May 5	May 13	Sept 23	Oct 1	133	149	46
Wahpeton	Richland	May 4	May 13	Sept 25	Oct 3	136	151	65

Source: National Climatic Data Center. <sup>1</sup> Based on data for selected stations. Number of years used in average ranges by station from 26-78 years.



