



2007 North Dakota Custom Rates

Part II – Late Season Operations

December 2007

Introduction

This publication is the result of an October 2007 survey conducted by the USDA's National Agricultural Statistics Service. Approximately 2,900 reports from farmers and ranchers, elevators, custom harvesters, and other custom operators were tabulated. The survey is designed to provide state and regional averages of custom work rates. The late season survey has been conducted every three years since 1962, except during the early 1980's when it was conducted every other year.

Appreciation is expressed to all survey participants who provided the data for this report and also to North Dakota State University Extension Service personnel for their assistance on this project. Funding was provided by the North Dakota State University Experiment Station and Extension Service.

The Data

This report contains state and regional level custom work rates for harvesting, drying and hauling crops, seed preparation, hauling hay and livestock, and other custom work for fall operations.

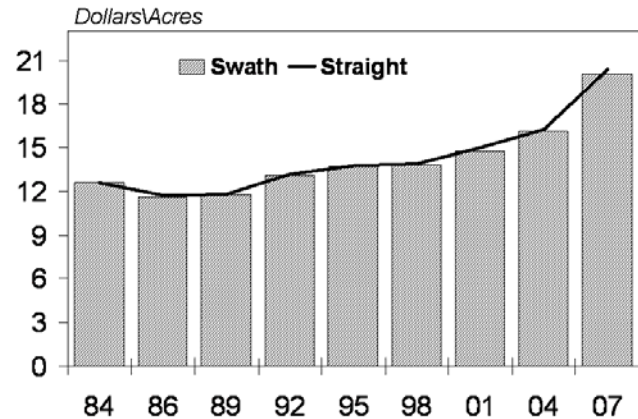
Included for each operation are the number of reports, the range in rates, the most frequently reported rate, and the average rate. Also included are state level 2004 average rates, 2007 rates as a percent of 2004 and historical comparisons back to 1984 for selected operations. Regional averages are reported where there were a sufficient number of reports. We advise the reader to exercise discretion when using rates where less than fifteen reports were tabulated. The abbreviation "D" represents not published to avoid disclosing individual data.

The ranges show the minimum and maximum for each custom operation. The range is affected by the locality of the reporter and the size of the custom operator. A farmer/rancher who does a small amount of custom work for their neighbors may charge less than a large scale operator. No adjustments are made for this or any other special circumstances.

Several new questions were added to this year's survey. Respondents were given the opportunity to report the price per gallon for their most recent diesel fuel purchase. Reports were also collected for annual rental rates for grain storage and machinery storage facilities.

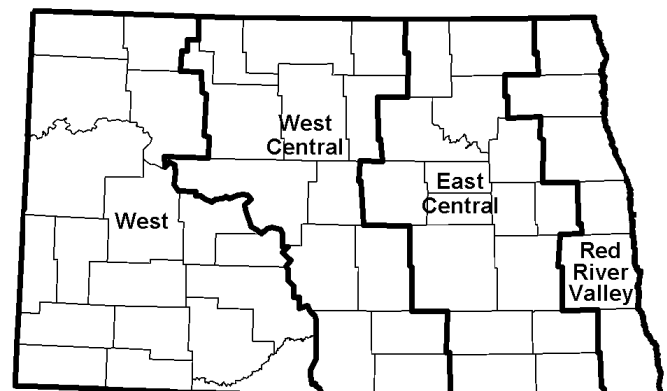
The rates in this report are averages, not estimates. They include the charges for equipment, power, fuel, and the operator. Exchange work was not considered custom work for this survey.

Small Grain & Flaxseed Combining 1/ North Dakota



1/ Averages for years 1984 -1998 do not include flaxseed.

Farming Regions North Dakota



~ Not Copyright Protected - Compiled and Published by ~

USDA, National Agricultural Statistics Service, North Dakota Field Office ■ P.O. Box 3166 ■ Fargo, ND 58108-3166
701-239-5306 ■ E-mail: nass-nd@nass.usda.gov ■ To access NASS reports - <http://www.nass.usda.gov>

HARVESTING CROPS, SEED PREPARATION AND MACHINE RENTAL

STATEWIDE AVERAGES, NORTH DAKOTA, 2007

Operation	Unit	2007				2004 Average Rate	2007 as Percent of 2004
		Number of Reports	Range in Rates	Most Frequent Rate Reported	Average Rate		
Diesel Fuel		<i>Number</i> 1,752	<i>\$/Gallon</i> 1.70-3.89	<i>\$/Gallon</i> 3.00	<i>\$/Gallon</i> 2.87	<i>\$/Gallon</i> NA	<i>Percent</i> NA
		<i>Number</i>	<i>\$/Unit</i>	<i>\$/Unit</i>	<i>\$/Unit</i>	<i>\$/Unit</i>	<i>Percent</i>
Harvesting Grain Crops							
Swathing Grain							
Self-Propelled	Acre	175	3.00-23.00	7.00	7.79	6.21	125
	Hour	5	8.00-75.00	50.00	38.60	D	NA
Pull-Type	Acre	92	3.00-25.00	7.00	7.63	5.75	133
Swathing Canola							
Self-Propelled	Acre	104	3.00-25.00	7.00	7.92	7.05	112
	Hour	5	8.00-100.00	NA	47.60	D	NA
Pull-Type	Acre	46	4.50-13.00	6.00	7.77	6.98	111
Combining From Swaths							
Small Grains & Flaxseed	Acre	258	10.00-38.00	20.00	20.04	16.12	124
	Hour	13	40.00-135.00	100.00	97.54	108.36	90
Dry Edible Beans	Acre	62	14.00-30.00	25.00	23.11	21.02	110
	Hour	4	95.00-200.00	NA	153.75	141.67	109
Canola	Acre	164	7.00-29.00	25.00	20.55	17.25	119
	Hour	4	95.00-120.00	NA	107.50	116.25	92
Straight Combining							
Small Grains & Flaxseed	Acre	564	12.00-41.00	20.00	20.41	16.27	125
	Hour	24	40.00-170.00	100.00	113.25	108.91	104
Corn	Acre	205	13.00-40.00	25.00	22.81	18.43	124
	Hour	8	95.00-150.00	95.00	123.75	110.00	113
Sunflower	Acre	171	10.00-32.00	20.00	20.32	16.31	125
	Hour	6	12.00-135.00	NA	86.17	124.38	69
Soybeans	Acre	221	14.00-30.00	20.00	21.31	18.22	117
	Hour	13	82.00-180.00	100.00	117.08	120.75	97
Dry Edible Beans	Acre	82	14.00-35.00	25.00	23.27	19.64	118
	Hour	3	D	D	D	D	D
Dry Bean Harvesting							
Cutting Only (Knifing)	Acre	28	5.00-20.00	8.00	12.93	11.11	116
Windrowing (After Knifing)	Acre	11	4.00-25.00	5.00	8.95	8.64	104
Cutting & Windrowing (One Operation)	Acre	24	7.50-50.00	20.00	20.96	14.79	142
Sugarbeet Harvesting							
Topping	Acre	4	6.00-20.00	15.00	14.00	13.00	108
Lifting	Acre	3	D	D	D	D	D
Making Corn Silage							
Field Chopping Only	Acre	56	9.12-100.00	35.00	35.45	26.75	133
	Hour	32	35.00-550.00	300.00	296.45	170.73	174
Field Chopping and Hauling	Acre	92	15.00-100.00	40.00	43.83	37.55	117
	Hour	73	44.00-700.00	500.00	401.16	305.50	131
Shredding Corn Stalks	Acre	31	3.00-15.00	8.00	8.04	6.92	116
Seed Preparation							
Seed Grain							
Cleaning Only	Gross Bu	544	0.05-1.50	0.50	0.436	0.380	115
Treating Only	Gross Bu	74	0.05-3.00	1.00	0.801	0.543	148
Cleaning and Treating	Gross Bu	66	0.08-3.35	1.00	1.169	0.915	128
Flaxseed							
Cleaning Only	Gross Bu	135	0.08-2.00	1.00	0.784	0.680	115
Treating Only	Gross Bu	11	0.10-3.00	0.30	0.673	0.360	187
Cleaning and Treating	Gross Bu	10	0.35-3.35	0.60	1.115	0.779	143
Machine Rental							
Tractor							
Under 100 Horsepower	Hour ¹	120	8.00-100.00	20.00	31.67	27.63	115
100-200 Horsepower	Hour ¹	180	10.00-180.00	30.00	47.03	38.88	121
Over 200 Horsepower	Hour ¹	154	10.00-200.00	50.00	59.16	55.56	106
Combine							
Acre		18	6.00-25.00	12.00	14.44	12.07	120
Hour ¹		226	15.00-220.00	100.00	108.51	100.61	108
Grain Cart Rental							
Acre		8	1.00-7.50	2.00	3.38	2.10	161
Hour ¹		6	10.00-50.00	20.00	22.08	13.25	167
Swather							
Self-Propelled	Acre	23	3.00-15.00	3.00	6.17	5.45	113
	Hour ¹	11	5.00-75.00	50.00	41.36	39.73	104
Pull-Type	Acre	15	2.00-10.00	5.00	5.18	3.83	135
	Hour ¹	3	D	D	D	D	D
Field Roller							
Acre		235	1.00-10.00	2.00	3.05	2.78	110
Hour ¹		4	2.50-12.00	NA	5.88	7.25	81

¹ Rates for machine rentals are in tachometer hours. NA=Not Available D=Insufficient Reports

DRYING AND HAULING CROPS, HAY AND CATTLE

STATEWIDE AVERAGES, NORTH DAKOTA, 2007

Operation	Unit	Basic Charge - 2007					2004 Average Rate	2007 as % of 2004	Extra Charge-2007	
		Number of Reports	Range In Rates	Most Frequent Rate Reported	Average Maximum Moisture Content	Average Rate			No. Rpts	For Each Additional 1% Moisture Removed
		Number	\$/Unit	\$/Unit	Percent	\$/Unit	\$/Unit	Percent	Number	\$/Unit
Drying Grain										
Small Grains	Bu	128	0.02-0.50	0.10	15.51	0.128	0.145	88	64	0.045
Corn	Bu	87	0.01-0.50	0.04	17.27	0.141	0.179	79	46	0.039
Sunflower	Cwt	23	0.07-0.50	0.10	13.26	0.187	0.168	111	15	0.052
Flaxseed	Bu	6	0.10-0.20	0.10	14.67	0.132	0.168	79	5	0.040
Soybeans	Bu	21	0.04-0.20	0.12	14.81	0.105	0.147	71	15	0.047

STATEWIDE AVERAGES, NORTH DAKOTA, 2007

Operation	Unit	Basic Charge - 2007					2004 Average Rate	2007 as % of 2004	Extra Charge-2007	
		Number of Reports	Range In Rates	Most Frequent Rate Reported	Average Base Mileage	Average Rate			No. Rpts	Per 10 Miles Over Base Mileage
		Number	\$/Unit	\$/Unit	Miles	\$/Unit	\$/Unit	Percent	Number	\$/Unit
Hauling Crops										
Wheat, All	Bu	417	0.01-0.80	0.15	27.03	0.157	0.123	128	117	0.081
Barley	Bu	197	0.05-0.45	0.15	29.70	0.154	0.119	129	67	0.068
Oats	Bu	159	0.04-0.45	0.15	27.22	0.146	0.107	136	55	0.090
Sunflower	Cwt	69	0.04-1.30	0.15	61.22	0.376	0.413	91	17	0.095
Canola	Cwt	53	0.06-1.25	0.15	53.19	0.284	0.211	135	12	0.068
Flaxseed	Bu	59	0.06-0.26	0.15	22.56	0.139	0.139	100	19	0.056
Corn	Bu	85	0.05-0.45	0.10	31.76	0.151	0.110	137	36	0.070
Hauling Silage	Ton	10	0.07-4.00	0.10	11.67	0.551	1.272	43	3	D
Sugarbeets	Ton	16	0.10-5.00	5.00	14.33	3.338	3.760	89	5	0.250

D=Insufficient Reports

STATEWIDE AVERAGES, NORTH DAKOTA, 2007

Operation	Unit	Basic Charge - 2007				2004 Average Rate	2007 as % of 2004	Loading Charge-2007	
		Number of Reports	Range In Rates	Most Frequent Rate Reported	Average Rate			No. Rpts	Charge
		Number	\$/Unit	\$/Unit	\$/Unit	\$/Unit	Percent	Number	\$/Load
Hauling Hay									
By the Load (Loose & Bales)									
Less than 10 tons	Mile ¹	62	0.20-5.00	4.00	3.26	2.55	128	38	19.60
10-20 tons	Mile ¹	113	0.20-10.00	4.00	3.53	3.00	118	70	24.43
Over 20 tons	Mile ¹	118	0.20-20.00	4.00	3.84	2.94	131	63	27.12
By the Bale									
Large Sq Bales ²	Bale	7	0.75-7.00	3.00	3.32	2.34	142	7	{ Included in basic charges
Large Rd Bales ²	Bale	72	0.50-18.00	3.00	3.43	3.06	112	72	
Hauling Cattle								No Rpts	Average Cwt/Load
Gooseneck Trailer	Mile ³	199	0.75-7.00	3.00	2.86	2.23	128	111	113.00
Semi Trailer	Mile ³	288	0.44-10.00	4.00	3.60	3.08	117	146	452.84

¹ Loaded mile, excludes loading. ² Average rate based on an average of 52.0 miles for large square bales and 20.5 miles for large round bales. Extra charges apply for hauls exceeding this base mileage were \$2.40 per 10 miles for large round bales. ³ Loaded mile.

OTHER CUSTOM WORK AND HISTORICAL DATA

OTHER CUSTOM WORK, STATEWIDE AVERAGES, NORTH DAKOTA, 2007

Operation	2007					2004 Average Rate	2007 as Percent of 2004
	Unit	Number of Reports	Range in Rates	Most Frequent Rate Reported	Average Rate		
		Number	\$/Unit	\$/Unit	\$/Unit	\$/Unit	Percent
Custom Farming ¹							
Small Grains	Acre	134	8.00-165.00	50.00	36.62	40.17	91
Row Crops	Acre	63	10.00-200.00	50.00	42.51	49.26	86
Miscellaneous							
Mowing/Clipping CRP	Acre	240	0.50-20.00	7.00	7.73	6.48	119
	Hour	49	4.00-125.00	50.00	58.37	51.28	114
On Farm Grain Bin Storage	Cents/Bu/Month	306	0.01-0.50	0.03	0.03	0.03	100
On Farm Grain Bin Storage	Cents/Bu/Year	146	0.01-0.95	0.10	0.12	NA	NA
Machine Shed Rental	Cents/Sq Ft/Month	5	0.01-0.35	NA	0.11	0.13	85
Machine Shed Rental	Cents/Sq Ft/Year	18	0.01-2.00	0.05	0.47	NA	NA
Farm Drainage/Ditching	Hour	61	8.00-250.00	100.00	101.67	86.03	118
Land Leveling	Hour	26	4.00-200.00	100.00	87.12	72.21	121
Rock Picking	Hour	56	2.00-125.00	50.00	42.24	42.99	98
Snow Removal							
Front End Loader	Hour	199	6.00-125.00	50.00	56.11	50.87	110
Tractor Blower	Hour	192	5.00-100.00	50.00	51.80	47.39	109

¹ Includes all necessary farming operations from field preparation through harvesting. NA=Not Available

HISTORICAL DATA, STATEWIDE AVERAGES, NORTH DAKOTA, 1984 - 2007

Operation	Unit	1984	1986	1989	1992	1995	1998	2001	2004	2007
		\$/Unit	\$/Unit	\$/Unit	\$/Unit	\$/Unit	\$/Unit	\$/Unit	\$/Unit	\$/Unit
Swathing Grain										
Self Propelled	Acre	3.73	3.67	3.94	4.22	4.46	5.04	5.47	6.21	7.79
PTO Unit	Acre	3.36	3.39	3.68	4.03	4.23	4.58	5.23	5.75	7.63
Combining From Swaths										
Small Grains & Flaxseed ¹	Acre	12.61	11.59	11.82	13.13	13.70	13.82	14.72	16.12	20.04
Dry Beans	Acre	15.04	14.65	16.27	18.20	18.18	19.06	19.06	21.02	23.11
Straight Combining										
Small Grains & Flaxseed ¹	Acre	12.57	11.71	11.80	13.15	13.74	13.88	15.03	16.27	20.41
Corn	Acre	14.83	14.46	14.05	15.23	16.33	16.26	17.33	18.43	22.81
Sunflower	Acre	13.26	12.54	12.40	13.54	14.14	14.49	15.29	16.31	20.32
Soybeans	Acre	14.68	14.08	14.20	15.70	15.57	16.10	16.72	18.22	21.31
Dry Beans	Acre	15.31	15.46	16.46	18.39	17.96	19.10	18.29	19.64	23.27
Making Corn Silage										
Chopping Only	Acre	16.41	16.06	16.83	17.65	18.51	18.69	20.78	26.75	35.45
Chopping and Hauling	Acre	21.22	19.54	20.02	21.65	22.62	23.62	26.26	37.55	43.83
Drying										
Small Grains	Bushel	0.152	0.131	0.118	0.108	0.111	0.123	0.113	0.145	0.128
Flaxseed	Bushel	0.172	0.153	0.124	0.110	0.134	0.134	0.109	0.168	0.132
Corn	Bushel	0.176	0.164	0.126	0.115	0.123	0.146	0.132	0.179	0.141
Sunflower	Cwt	0.309	0.204	0.200	0.157	0.152	0.171	0.165	0.168	0.187
Soybeans	Bushel	NA	NA	NA	0.093	0.085	0.115	0.125	0.147	0.105
Hauling										
Wheat	Bushel	0.095	0.096	0.092	0.090	0.098	0.109	0.116	0.123	0.157
Barley	Bushel	0.091	0.093	0.089	0.088	0.094	0.101	0.117	0.119	0.154
Oats	Bushel	0.089	0.087	0.088	0.087	0.094	0.100	0.107	0.107	0.146
Flaxseed	Bushel	0.096	0.088	0.094	0.091	0.097	0.124	0.107	0.139	0.139
Corn	Bushel	0.091	0.086	0.085	0.087	0.097	0.101	0.114	0.110	0.151
Sunflower	Cwt	0.165	0.168	0.202	0.196	0.189	0.339	0.378	0.413	0.376
Seed Grain Preparation										
Cleaning Only	Gross Bu	0.275	0.277	0.291	0.299	0.321	0.340	0.361	0.380	0.436
Treating Only	Gross Bu	0.404	0.393	0.437	0.504	0.552	0.519	0.514	0.542	0.801
Cleaning & Treating	Gross Bu	0.678	0.643	0.718	0.784	0.800	0.726	0.846	0.915	1.169
Farm Drainage/Ditching	Hour	56.80	54.48	50.34	58.66	63.49	76.25	84.80	86.03	101.67
Land Leveling	Hour	55.21	51.17	48.03	58.31	60.61	63.26	64.31	72.21	87.12
Rock Picking	Hour	35.69	35.34	37.55	40.20	39.26	52.29	42.72	42.99	42.24

¹ Averages for years 1984-1998 do not include flaxseed. NA=Not Available

FARMING REGION AVERAGES, NORTH DAKOTA, 2007

Region	Swathing Grain Self-Propelled				Swathing Grain PTO Unit				Swathing Canola Self-Propelled			
	No. Rpts	Range	Most Frequent	Average Rate	No. Rpts	Range	Most Frequent	Average Rate	No. Rpts	Range	Most Frequent	Average Rate
		\$/Acre	\$/Acre	\$/Acre		\$/Acre	\$/Acre	\$/Acre		\$/Acre	\$/Acre	\$/Acre
W	58	4.50-23.00	6.00	8.27	24	4.50-25.00	6.00	8.52	25	5.00-25.00	6.00	8.98
WC	57	3.50-15.00	8.00	7.21	27	4.00-10.00	8.00	7.20	31	5.00-12.00	7.00	7.04
EC	50	3.00-21.00	7.00	7.92	33	3.00-14.00	5.00	7.32	44	3.00-13.00	8.00	7.89
RRV	10	4.50-15.00	6.00	7.65	8	3.50-20.00	5.00	7.69	4	8.00-9.00	8.00	8.50
STATE	175	3.00-23.00	7.00	7.79	92	3.00-25.00	7.00	7.63	104	3.00-25.00	7.00	7.92
Region	Swathing Canola PTO Unit				Combining Small Grains & Flaxseed from Swath				Combining Dry Beans from Swath			
	No. Rpts	Range	Most Frequent	Average Rate	No. Rpts	Range	Most Frequent	Average Rate	No. Rpts	Range	Most Frequent	Average Rate
		\$/Acre	\$/Acre	\$/Acre		\$/Acre	\$/Acre	\$/Acre		\$/Acre	\$/Acre	\$/Acre
W	8	4.50-10.00	6.00	7.19	62	10.00-29.00	18.00	19.67	5	16.00-25.00	20.00	20.80
WC	14	5.00-12.00	7.00	7.52	86	12.00-38.00	18.00	19.90	13	16.00-28.00	20.00	22.88
EC	21	5.00-13.00	8.00	8.26	87	13.00-28.00	20.00	20.85	29	14.00-30.00	25.00	23.48
RRV	3	D	D	D	23	14.00-24.00	15.00	18.52	15	20.00-30.00	25.00	23.37
STATE	46	4.50-13.00	6.00	7.77	258	10.00-38.00	20.00	20.04	62	14.00-30.00	25.00	23.11
Region	Combining Canola from Swath				Straight Combining Small Grains & Flaxseed				Combining Corn			
	No. Rpts	Range	Most Frequent	Average Rate	No. Rpts	Range	Most Frequent	Average Rate	No. Rpts	Range	Most Frequent	Average Rate
		\$/Acre	\$/Acre	\$/Acre		\$/Acre	\$/Acre	\$/Acre		\$/Acre	\$/Acre	\$/Acre
W	33	10.00-25.00	20.00	20.62	199	12.00-41.00	20.00	20.43	42	13.00-30.00	20.00	20.61
WC	58	7.00-29.00	18.00	20.19	166	12.00-32.00	22.00	20.13	48	15.00-30.00	25.00	21.97
EC	61	7.50-27.00	25.00	20.99	153	12.00-28.00	20.00	20.92	75	15.00-36.00	25.00	23.53
RRV	12	9.00-28.00	16.00	19.88	46	15.00-28.00	16.00	19.68	40	17.50-40.00	20.00	24.76
STATE	164	7.00-29.00	25.00	20.55	564	12.00-41.00	20.00	20.41	205	13.00-40.00	25.00	22.81
Region	Combining Sunflower				Straight Combining Soybeans				Straight Combining Dry Beans			
	No. Rpts	Range	Most Frequent	Average Rate	No. Rpts	Range	Most Frequent	Average Rate	No. Rpts	Range	Most Frequent	Average Rate
		\$/Acre	\$/Acre	\$/Acre		\$/Acre	\$/Acre	\$/Acre		\$/Acre	\$/Acre	\$/Acre
W	36	13.00-27.00	17.00	19.88	11	16.00-25.00	20.00	22.00	9	16.00-27.00	23.00	22.89
WC	55	10.00-28.00	18.00	20.51	45	15.00-29.00	22.00	21.39	16	20.00-25.00	20.00	22.69
EC	62	12.00-27.00	20.00	20.54	112	14.00-28.00	20.00	21.14	39	14.00-35.00	25.00	23.49
RRV	18	13.00-32.00	16.00	19.89	53	15.00-30.00	20.00	21.43	18	18.00-30.00	24.00	23.49
STATE	171	10.00-32.00	20.00	20.32	221	14.00-30.00	20.00	21.31	82	14.00-35.00	25.00	23.27
Region	Chopping Corn Silage				Chopping and Hauling Corn Silage				Cleaning Seed Grain			
	No. Rpts	Range	Most Frequent	Average Rate	No. Rpts	Range	Most Frequent	Average Rate	No. Rpts	Range	Most Frequent	Average Rate
		\$/Acre	\$/Acre	\$/Acre		\$/Acre	\$/Acre	\$/Acre		\$/Gross Bu	\$/Gross Bu	\$/Gross Bu
W	18	12.00-100.00	25.00	33.67	31	15.00-85.00	50.00	43.06	182	0.07-1.35	0.50	0.441
WC	20	20.00-100.00	25.00	41.10	30	15.00-91.50	30.00	40.45	170	0.05-0.75	0.35	0.392
EC	16	9.12-50.00	35.00	31.07	28	18.00-100.00	35.00	48.54	135	0.05-1.50	0.50	0.467
RRV	2	D	D	D	3	D	D	D	57	0.10-0.75	0.50	0.476
STATE	56	9.12-100.00	35.00	35.45	92	15.00-100.00	40.00	43.83	544	0.05-1.50	0.50	0.436
Region	Cleaning Flaxseed				Treating Seed Grain				Cleaning and Treating Seed Grain			
	No. Rpts	Range	Most Frequent	Average Rate	No. Rpts	Range	Most Frequent	Average Rate	No. Rpts	Range	Most Frequent	Average Rate
		\$/Gross Bu	\$/Gross Bu	\$/Gross Bu		\$/Gross Bu	\$/Gross Bu	\$/Gross Bu		\$/Gross Bu	\$/Gross Bu	\$/Gross Bu
W	38	0.08-1.50	0.50	0.747	17	0.06-2.00	1.00	0.659	13	0.32-2.50	1.35	1.202
WC	68	0.30-2.00	1.00	0.861	17	0.07-3.00	1.00	0.825	13	0.35-3.35	1.45	1.075
EC	22	0.35-1.25	0.50	0.707	24	0.05-2.00	1.00	0.865	25	0.08-2.45	1.00	1.177
RRV	7	0.25-1.00	0.30	0.486	16	0.07-2.00	2.00	0.829	15	0.45-2.75	0.50	1.209
STATE	135	0.08-2.00	1.00	0.784	74	0.05-3.00	1.00	0.801	66	0.08-3.35	1.00	1.169

D=Insufficient Reports

FARMING REGION AVERAGES, NORTH DAKOTA, 2007

Region	Drying Small Grains					Drying Corn				
	No. Rpts	Range	Most Frequent	Average Rate	Avg. Maximum Moisture Content	No. Rpts	Range	Most Frequent	Average Rate	Avg. Maximum Moisture Content
		<i>\$/Bushel</i>	<i>\$/Bushel</i>	<i>\$/Bushel</i>	<i>Percent</i>		<i>\$/Bushel</i>	<i>\$/Bushel</i>	<i>\$/Bushel</i>	<i>Percent</i>
W	7	0.02-0.30	0.30	0.170	15.43	2	D	D	D	D
WC	34	0.02-0.50	0.10	0.142	15.37	9	0.01-0.50	0.20	0.246	17.33
EC	59	0.02-0.30	0.04	0.118	15.72	42	0.02-0.40	0.04	0.140	17.70
RRV	28	0.04-0.23	0.10	0.122	15.27	34	0.04-0.25	0.10	0.112	16.96
STATE	128	0.02-0.50	0.10	0.128	15.51	87	0.01-0.50	0.04	0.141	17.27

Region	Drying Sunflower					Drying Flaxseed				
	No. Rpts	Range	Most Frequent	Average Rate	Avg. Maximum Moisture Content	No. Rpts	Range	Most Frequent	Average Rate	Avg. Maximum Moisture Content
		<i>\$/Cwt</i>	<i>\$/Cwt</i>	<i>\$/Cwt</i>	<i>Percent</i>		<i>\$/Bushel</i>	<i>\$/Bushel</i>	<i>\$/Bushel</i>	<i>Percent</i>
W	1	D	D	D	D	NA	D	D	D	D
WC	9	0.08-0.50	0.10	0.198	12.67	NA	D	D	D	D
EC	8	0.07-0.30	0.10	0.156	14.25	4	0.10-0.20	0.10	0.138	14.75
RRV	5	0.12-0.35	0.12	0.198	12.80	2	D	D	D	D
STATE	23	0.07-0.50	0.10	0.187	13.26	6	0.10-0.20	0.10	0.132	14.67

Region	Hauling Wheat					Hauling Oats				
	No. Rpts	Range	Most Frequent	Average Rate	Average Base Mileage	No. Rpts	Range	Most Frequent	Average Rate	Average Base Mileage
		<i>\$/Bushel</i>	<i>\$/Bushel</i>	<i>\$/Bushel</i>	<i>Miles</i>		<i>\$/Bushel</i>	<i>\$/Bushel</i>	<i>\$/Bushel</i>	<i>Miles</i>
W	138	0.07-0.60	0.15	0.180	30.66	48	0.05-0.35	0.15	0.168	31.81
WC	119	0.03-0.45	0.15	0.156	22.95	49	0.05-0.45	0.15	0.158	25.58
EC	117	0.01-0.80	0.10	0.149	28.94	47	0.04-0.28	0.10	0.124	27.10
RRV	43	0.02-0.25	0.10	0.102	21.58	15	0.05-0.15	0.10	0.103	17.08
STATE	417	0.01-0.80	0.15	0.157	27.03	159	0.04-0.45	0.15	0.146	27.22

Region	Hauling Barley					Hauling Sunflower				
	No. Rpts	Range	Most Frequent	Average Rate	Average Base Mileage	No. Rpts	Range	Most Frequent	Average Rate	Average Base Mileage
		<i>\$/Bushel</i>	<i>\$/Bushel</i>	<i>\$/Bushel</i>	<i>Miles</i>		<i>\$/Cwt</i>	<i>\$/Cwt</i>	<i>\$/Cwt</i>	<i>Miles</i>
W	55	0.08-0.35	0.15	0.175	31.89	16	0.04-1.25	0.13	0.448	77.73
WC	60	0.05-0.45	0.15	0.159	26.47	18	0.10-1.20	0.16	0.374	55.94
EC	65	0.05-0.45	0.10	0.146	33.72	25	0.07-1.30	0.10	0.408	71.50
RRV	17	0.05-0.25	0.10	0.102	18.93	10	0.06-0.80	0.15	0.189	26.63
STATE	197	0.05-0.45	0.15	0.154	29.70	69	0.04-1.30	0.15	0.376	61.22

Region	Hauling Flaxseed					Hauling Corn				
	No. Rpts	Range	Most Frequent	Average Rate	Average Base Mileage	No. Rpts	Range	Most Frequent	Average Rate	Average Base Mileage
		<i>\$/Bushel</i>	<i>\$/Bushel</i>	<i>\$/Bushel</i>	<i>Miles</i>		<i>\$/Bushel</i>	<i>\$/Bushel</i>	<i>\$/Bushel</i>	<i>Miles</i>
W	13	0.12-0.25	0.15	0.162	24.50	13	0.13-0.30	0.20	0.208	39.09
WC	24	0.07-0.25	0.15	0.145	20.09	23	0.10-0.45	0.15	0.170	31.19
EC	16	0.06-0.26	0.15	0.124	25.25	26	0.06-0.40	0.10	0.148	31.95
RRV	6	0.06-0.15	0.15	0.103	23.25	23	0.05-0.24	0.10	0.102	27.95
STATE	59	0.06-0.26	0.15	0.139	22.56	85	0.05-0.45	0.10	0.151	31.76

Region	Custom Farming Small Grain ¹				Custom Farming Row Crops ¹				Rock Picking			
	No. Rpts	Range	Most Frequent	Average Rate	No. Rpts	Range	Most Frequent	Average Rate	No. Rpts	Range	Most Frequent	Average Rate
		<i>\$/Acre</i>	<i>\$/Acre</i>	<i>\$/Acre</i>		<i>\$/Acre</i>	<i>\$/Acre</i>	<i>\$/Acre</i>		<i>\$/Hour</i>	<i>\$/Hour</i>	<i>\$/Hour</i>
W	54	10.00-130.00	50.00	30.83	12	10.00-75.00	12.00	27.83	17	2.00-95.00	50.00	33.88
WC	35	8.00-75.00	12.00	30.44	19	15.00-85.00	16.00	35.79	21	2.00-125.00	75.00	57.29
EC	34	9.00-165.00	40.00	45.56	22	12.00-200.00	50.00	50.86	16	6.00-60.00	20.00	28.22
RRV	11	16.00-150.00	50.00	57.09	10	18.00-75.00	75.00	54.50	2	D	D	D
STATE	134	8.00-165.00	50.00	36.62	63	10.00-200.00	50.00	42.51	56	2.00-125.00	50.00	42.24

¹ Includes all necessary farming operations from field preparation through harvesting. NA=Not Available D=Insufficient Reports