



ARIZONA LIVESTOCK

FEBRUARY 2004

Released March 1, 2004 by the Arizona Agricultural Statistics Service and University of Arizona, College of Agriculture, 3003 N Central Avenue, Suite 950, Phoenix, Arizona 85012-2994, (602) 280-8850, Fax: (602) 280-8897, www.nass.usda.gov/az/.

CATTLE ON FEED

On February 1, 2004, Arizona had 296,000 head of cattle on feed for the slaughter market, up 2 percent from a year ago and up 3,000 head from last month. Placements totaled 32,000 head, 10 percent above January 2003. During January, 26,000 head were marketed, up 8 percent from last January.

On February 1, 2004, California had 500,000 head of cattle on feed for the slaughter market, up 4 percent from last February, but down 10,000 head from last month. Placements totaled 55,000 head, 5 percent below last year. During January, 60,000 head were marketed, a decrease of 10 percent from January 2003.

Cattle and calves on feed for slaughter market in the United States for feedlots with capacity of 1,000 or more head totaled 11.1 million head on February 1, 2004. The inventory was 4 percent above February 1, 2003, but 4 percent below February 1, 2002. Placements in feedlots during January totaled 1.75 million, 16 percent below 2003 and 20 percent below 2002. Net placements were 1.65 million. During January, placements of cattle and calves weighing less than 600 pounds were 362,000, 600-699 pounds were 466,000, 700-799 pounds were 576,000, and 800 pounds and greater were 342,000. Marketings of fed cattle during January totaled 1.78 million, down 10 percent from 2003 and down 14 percent from 2002. Other disappearance totaled 94,000 during January, 25 percent above 2003 and 6 percent above 2002.

Cattle and calves on feed for slaughter market in the United States for feedlots with capacity of 1,000 or more head represented 81.5 percent of all cattle and calves on feed in the United States on January 1, 2004, up from 80.6 percent on January 1, 2003. Marketings of fed cattle for feedlots with capacity of 1,000 or more head during 2003 represented 85.1 percent all cattle marketed from feedlots in the United States, down from 85.3 percent during 2002.

CATTLE ON FEED: NUMBER ON FEED, NUMBER PLACED ON FEED, NUMBER MARKETED, AND OTHER DISAPPEARANCE, 1,000+ CAPACITY FEEDLOTS, BY MONTH, STATE, AND UNITED STATES 2003-2004

STATE	Number on Feed 1/					Placements During January			Marketings During January			Other Disappearance During January 2/		
	Feb 1, 2003	Jan 1, 2004	Feb 1, 2004			2003	2004	2004 as % of 2003	2003	2004	2004 as % of 2003	2003	2004	2004 as % of 2003
			Number	as % of 2003	as % of Jan									
			1,000 Head	Percent		1,000 Head	Percent		1,000 Head	Percent	1,000 Head	Percent		
AZ	291	293	296	102	101	29	32	110	24	26	108	3	3	100
CA	*480	510	500	104	98	58	55	95	67	60	90	6	5	83
CO	1,030	1,040	1,040	101	100	225	165	73	205	160	78	10	5	50
ID	*290	300	275	95	92	56	41	73	65	64	98	1	2	200
IA	*390	370	380	97	103	69	59	86	*72	47	65	2	2	100
KS	2,220	2,430	2,420	109	100	540	455	84	500	440	88	20	25	125
NE	2,220	2,280	2,280	103	100	480	380	79	390	360	92	10	20	200
NM	114	115	117	103	102	9	17	189	13	13	100	1	2	200
OK	330	355	350	106	99	*46	50	109	49	53	108	2	2	100
SD	215	200	200	93	100	*46	30	65	*45	29	64	1	1	100
TX	2,600	2,830	2,770	107	98	420	390	93	435	430	99	15	20	133
WA	180	*200	185	103	93	36	26	72	39	40	103	2	1	50
Other														
Sts	340	330	310	91	94	75	46	61	68	60	88	2	6	300
US	*10,700	*11,253	11,123	104	99	*2,089	1,746	84	*1,972	1,782	90	75	94	125

* Revised

1/ Cattle and calves on feed are animals for slaughter market being fed a ration of grain or other concentrates and are expected to produce a carcass that will grade select or better.

2/ Includes death losses, movement from feedlots to pasture, and shipments to other feedlots for further feeding.

PUBLISHED MONTHLY

Subscription to "Arizona Livestock" is free to reporters upon request and available for \$10 per year to non-reporters. Send request for order forms or address changes to Arizona Agricultural Statistics Service, 3003 N Central Ave., Suite 950, Phoenix, Arizona 85012-2994. Releases are also available through our web site @ www.usda.gov/nass/az

Steven Manheimer, State Statistician
 Maria Bautista, Agricultural Statistician
 Clare Jervis, Agricultural Statistician
 Dennis Koong, Agricultural Statistician
 Tenopra Sheppard, Agricultural Statistician

RELEASE DATES FOR UPCOMING NATIONAL REPORTS

March 5 Annual Livestock Slaughter
 March 16 Milk Production
 March 19 Cattle on Feed
 March 19 Livestock Slaughter
 March 30 Agricultural Prices

JANUARY MILK PRODUCTION DOWN 0.9 PERCENT

Milk production in the 20 major States during January totaled 12.5 billion pounds, down 0.9 percent from January 2003. December revised production, at 12.3 billion pounds, was down 0.2 percent from December 2002. The December revision represented an increase of 0.5 percent or 62 million pounds from last month's preliminary production estimate.

Production per cow in the 20 major States averaged 1,620 pounds for January, 5 pounds above January 2003.

The number of cows on farms in the 20 major States was 7.72 million head, 92,000 head less than January 2003, but 5,000 head more than December 2003.

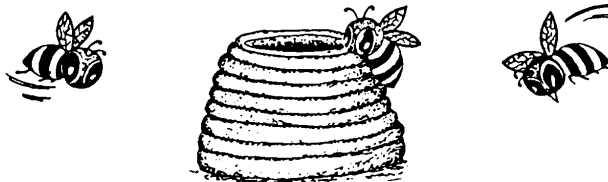
MILK COWS AND PRODUCTION: BY STATE, JANUARY 2003-2004

State	Milk Cows 1/		Milk Per Cow 2/		Milk Production 2/		2004 as % of 2003
	2003	2004	2003	2004	2003	2004	
	1,000 Head		Lbs		Million Lbs		Percent
AZ	155	155	1,970	2,015	305	312	2.3
CA	1,672	1,702	1,790	1,755	2,993	2,987	-0.2
FL	147	140	1,360	1,395	200	195	-2.5
ID	392	412	1,800	1,800	706	742	5.1
IL	114	108	1,580	1,610	180	174	-3.3
IN	146	145	1,710	1,715	250	249	-0.4
IA	207	196	1,595	1,600	330	314	-4.8
KY	120	112	1,115	1,090	134	122	-9.0
MI	302	301	1,765	1,780	533	536	0.6
MN	480	465	1,520	1,515	730	704	-3.6
MO	134	125	1,240	1,265	166	158	-4.8
NM	314	325	1,720	1,760	540	572	5.9
NY	675	658	1,515	1,495	1,023	984	-3.8
OH	260	258	1,445	1,450	376	374	-0.5
PA	590	563	1,540	1,500	909	845	-7.0
TX	320	317	1,505	1,660	482	526	9.1
VT	153	146	1,495	1,530	229	223	-2.6
VA	116	105	1,365	1,380	158	145	-8.2
WA	248	240	1,910	1,915	474	460	-3.0
WI	1,265	1,245	1,500	1,510	1,898	1,880	-0.9
20-State Total	7,810	7,718	1,615	1,620	12,616	12,502	-0.9

1/ Includes dry cows; excludes heifers not yet fresh.

2/ Excludes milk sucked by calves.

BEES AND HONEY



UNITED STATES HONEY PRODUCTION UP 5 PERCENT

Honey production in 2003 from producers with five or more colonies totaled 181 million pounds, up 5 percent from 2002. There were 2.59 million colonies producing honey in 2003, up 1 percent from 2002. Yield per colony averaged 69.9 pounds, up 5 percent from the 66.7 pounds in 2002. Colonies which produced honey in more than one State were counted in each State and yields per colony may therefore be understated. Colonies were not included if honey was not harvested. Producer honey stocks were 40.7 million pounds on December 15, 2003, up 3 percent from a year earlier. Stocks held by producers exclude stocks held under the commodity loan program.

Arizona honey production totaled 2.88 million pounds, 20 percent more than 2002. Honey producing colonies, at 40,000, is up 2,000 from a year ago. Yield per colony was 72 pounds, compared to 63 pounds in 2002.

HONEY PRICES RECORD HIGH

Honey prices increased to a record high during 2003 to 140.4 cents, up 6 percent from 132.7 cents in 2002. Prices are based on retail sales by producers and sales to private processors and cooperatives. State level honey prices reflect the portions of honey sold through retail, co-op and private channels. U.S. honey prices for each color class are derived by weighing quantities sold for each marketing channel at the U.S. level. Honey prices for 2003 were higher than the previous year for all color classes. Some 2002 crop honey was sold at the higher prices in 2003, which caused some revisions to the 2002 crop price.

Arizona's average price per pound was \$1.38, compared to \$1.08 in 2002. Value of production, at 4.0 million dollars, was up 54 percent from a year earlier.

PORK PRODUCTION AT RECORD MONTHLY HIGH FOR JANUARY

Commercial red meat production for the United States totaled 3.71 billion pounds in January, down 9 percent from the 4.07 billion pounds produced in January 2003. January 2003 contained 23 weekdays (including two holidays) and 4 Saturdays. January 2004 contained 22 weekdays (including two holidays) and 5 Saturdays.

Beef production, at 1.92 billion pounds, was 16 percent below the previous year. Cattle slaughter totaled 2.57 million head, down 14 percent from January 2003. The average live weight was 1,249 pounds, down 19 pounds from January a year ago.

Veal production totaled 16.0 million pounds, 10 percent below January a year ago. Calf slaughter totaled 79,000 head, down 16 percent from January 2003. The average live weight was 336 pounds, up 18 pounds from January a year ago.

Pork production totaled 1.76 billion pounds, up 1 percent from the previous year. Hog kill totaled 8.79 million head, slightly above January 2003. The average live weight was 269 pounds, up 1 pound from January a year ago.

Lamb and mutton production, at 15.4 million pounds, was down 3 percent from January 2003. Sheep slaughter totaled 219,200 head, 8 percent below last year. The average live weight was 141 pounds, up 8 pounds from January a year ago.

COMMERCIAL RED MEAT PRODUCTION: ARIZONA AND U.S. 1/

Class	January 2003	December 2003	January 2004	January 2004 as % of	
				January 2003	December 2003
	1,000 Lbs			Percent	
ARIZONA 2/					
Total Red Meat	37,300	31,300	29,700	80	95
	Million Lbs			Percent	
UNITED STATES					
Beef	2,290	1,973	1,921	84	97
Veal	18	19	16	90	84
Pork	1,749	1,866	1,761	101	94
Lamb and Mutton	16	18	15	97	85
Total Red Meat	4,073	3,876	3,713	91	96

1/ Based on packers' dressed weights and excludes farm slaughter.

2/ Breakdown by class not available, includes total beef, veal, pork, lamb, and mutton.

COMMERCIAL LIVESTOCK SLAUGHTER: ARIZONA, JANUARY 2004 AND U.S., JANUARY 2004 1/

SPECIES	ARIZONA			UNITED STATES		
	January			January		
	Number Slaughtered	Total Live Weight	Average Live Weight 2/	Number Slaughtered	Total Dressed Weight 3/	Average Live Weight 2/
	1,000 Head	1,000 Lbs	Lbs	1,000 Head	Million Lbs	Lbs
ARIZONA						
Cattle	38.1	50,536	1,326	2,571.0	1,921	1,249
Calves 4/				79.0	16	336
Hogs 4/				8,785.7	1,761	269
Sheep 4/				219.2	15	141

1/ Includes slaughter under federal inspection and other commercial slaughter, excludes farm slaughter.

2/ Average liveweights based on unrounded data.

3/ Based on packers' dressed weights and excludes farm slaughter.

4/ Not published to avoid disclosing individual operations but included in U.S. total.

OFFICIAL BUSINESS
 Penalty For Private Use \$300

ADDRESS SERVICE REQUESTED
 www.usda.gov/nass/

FEBRUARY FARM PRICES RECEIVED INDEX UP 2 POINTS FROM LAST MONTH

The preliminary All Farm Products Index of Prices Received by Farmers in February at 113, based on 1990-92=100, is 2 points (1.8 percent) above the January Index. The Livestock Products Index increased 1 point (0.9 percent) from January while the All Crops Index increased 2 points (1.8 percent). Producers received higher commodity prices for soybeans, broilers, corn, and hogs. Lower prices were received for cattle, lettuce, eggs, and broccoli. The seasonal change in the mix of commodities farmers sell, based on the past 3-year average, also affects the overall index. Increased average marketings of milk, cattle, broilers, and eggs offset decreased marketings of soybeans, corn, tobacco, and wheat.

This preliminary All Farm Products Index is up 14 points (14 percent) from February 2003. The Food Commodities Index increased 2 points (1.8 percent) from last month to 114, and is 18 points (19 percent) above February 2003.

PRICES PAID INDEX UNCHANGED

The February Index of Prices Paid for Commodities and Services, Interest, Taxes, and Farm Wage Rates (PPITW) is 130 percent of the 1990-92 average. The index is unchanged from January but 2 points (1.6 percent) above February 2003. Lower prices in February for feeder cattle, feed concentrates, herbicides, and insecticides offset higher prices for complete feeds, nitrogen fertilizers, feed grains, and LP gas.

PRICES RECEIVED BY FARMERS: ARIZONA AND U.S., FEBRUARY 2003 AND 2004 AND JANUARY 2004

Commodity	Unit	ARIZONA			UNITED STATES		
		February 2003 Entire Month	January 2004 Entire Month	February 2004 Mid-Month	February 2003 Entire Month	January 2004 Entire Month	February 2004 Mid-Month
Upland Cotton 1/	¢ Lb	2/	64.7	61.9	45.2	62.5	61.6
Cottonseed	\$ Ton	128.00	148.00	2/	111.00	127.00	140.00
All Wheat 3/	\$ Cwt	---	---	---	3.68	3.68	3.68
Durum Wheat 3/	\$ Cwt	---	---	---	4.24	3.97	4.03
Winter Wheat 3/	\$ Cwt	---	---	---	3.52	3.66	3.60
All Hay Baled 4/	\$ Ton	100.00	85.00	85.00	91.80	79.30	79.90
Alfalfa Hay Baled 4/	\$ Ton	100.00	85.00	85.00	96.40	83.60	84.70
Other Hay Baled 4/	\$ Ton	93.00	80.00	80.00	79.40	71.40	69.90
Grapefruit 5/	\$ Box	13.40	15.50	15.80	14.50	15.10	15.30
Oranges 5/	\$ Box	15.10	16.80	15.10	14.10	17.30	17.80
Lemons 5/	\$ Box	20.30	22.30	23.10	20.90	22.40	23.70
Tangerines 5/	\$ Box	25.10	27.80	22.10	23.20	28.40	23.10
Cows 6/	\$ Cwt	40.60	46.30	44.50	38.90	46.10	46.20
Steers and Heifers	\$ Cwt	79.90	91.00	90.00	78.10	85.40	81.60
Beef Cattle 7/	\$ Cwt	79.50	90.60	89.50	74.00	80.90	77.80
Calves	\$ Cwt	96.20	109.00	110.00	97.30	110.00	110.00
All Milk 8/	\$ Cwt	10.80	12.60	12.90	11.40	13.20	13.30

1/ Includes both spot and contract sales.

2/ Price not published to avoid disclosure of individual operations.

3/ Not available for Arizona.

4/ Mid-month.

5/ F.O.B. packed fresh Arizona box weights: Grapefruit 67 lbs., Oranges 75 lbs., Lemons 76 lbs., Tangerines 75 lbs.

6/ Beef cows and cull dairy cows sold for slaughter.

7/ "Cows" and "steers and heifers" combined.

8/ Before deductions for hauling. Includes quality, quantity, and other premiums. Excludes hauling subsidies.

U.S. PRICE INDEX SUMMARY TABLE

INDEX 1990-92 = 100	2003		2004	
	January	February	January	February
Prices Received	100	99	111	113
Prices Paid	126	128	130	130
Ratio 1/	79	77	85	87

1/ Ratio of index of prices received by farmers to index of prices paid.