



# California Poultry Report

Cooperating with the California Department of Food and Agriculture

California Field Office · P.O. Box 1258 · Sacramento, CA 95812 · (916) 498-5161 · (916) 498-5186 Fax · www.nass.usda.gov/ca

Released: July 29, 2008 · Frequency: Monthly · (USPS 598-310) VOL. 29 NO. 7

### HIGHLIGHTS IN THIS ISSUE:

Layer and Egg Production .....	1
Chick Hatch — Eggs in Incubators .....	2
Turkey Poults Hatched and Placed.....	3
Poultry and Egg Prices .....	3
Cold Storage Holdings .....	4

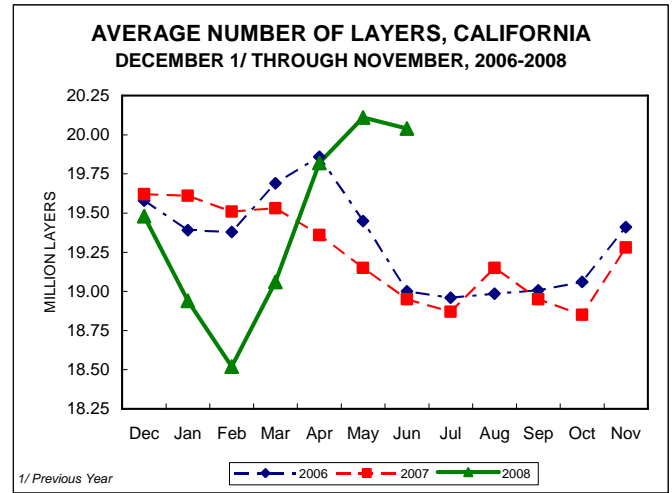
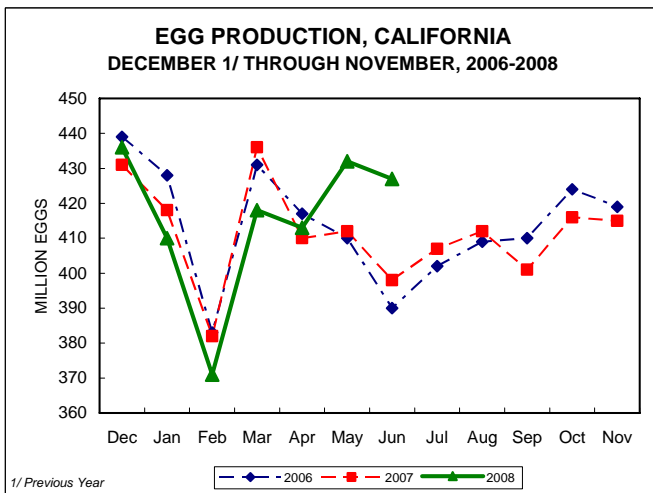
### U.S. JUNE EGG PRODUCTION

U.S. egg production totaled 7.37 billion during June 2008, down slightly from last year. Production included 6.27 billion table eggs, and 1.10 billion hatching eggs, of which 1.03 billion were broiler-type and 64 million were egg-type. The total number of layers during June 2008 averaged 339 million, down slightly from last year. June egg production per 100 layers was 2,176 eggs, up slightly from June 2007.

### CALIFORNIA EGG PRODUCTION

California's egg production during June totaled 427 million, a decrease of 5.00 million from May's production, but 29.0 million above June 2007. The average number of layers during the month totaled 20.0 million, fractionally below last month, but 6 percent above June 2007. Eggs per 100 layers during the month were 2,131 compared to 2,148 a month earlier and 2,101 in June 2007.

All layers in the U.S. on July 1, 2008 totaled 337 million, down 1 percent from last year. The 337 million layers consisted of 278 million layers producing table or market type eggs, 56.1 million layers producing broiler-type hatching eggs, and 2.69 million layers producing egg-type hatching eggs. Rate of lay per day on July 1, 2008, averaged 73.3 eggs per 100 layers, up 2 percent from July 1, 2007.



### LAYER NUMBERS AND EGG PRODUCTION DURING JUNE, FORCED MOLTING AS OF JULY 1

State	Average Number of Layers on Hand		Eggs Per 100 Layers		Total Egg Production		Layers Being Molted		Layers With Molt Completed	
	2007	2008	2007	2008	2007	2008	2007	2008	2007	2008
	Thousands		Number		Millions		Percent			
Alabama	9,203	9,353	1,847	1,882	170	176	1.5	0.5	5.5	4.5
Arkansas	14,081	13,855	1,917	1,920	270	266	4.5	2.0	12.0	10.0
California	18,946	20,035	2,101	2,131	398	427	5.5	8.0	31.5	31.5
Georgia	19,099	18,651	2,005	1,989	383	371	4.5	3.5	16.5	10.0
Indiana	24,866	24,230	2,220	2,245	552	544	4.0	1.5	31.0	35.0
Iowa	52,170	53,485	2,222	2,253	1,159	1,205	5.0	3.0	37.5	31.0
North Carolina	12,173	12,465	2,029	1,990	247	248	1.5	1.5	8.0	6.5
Ohio	25,704	26,579	2,233	2,197	574	584	4.5	4.0	20.0	16.0
Pennsylvania	22,283	21,829	2,320	2,359	517	515	2.0	2.0	16.0	12.0
Texas	18,361	18,241	2,217	2,176	407	397	1.5	2.5	25.5	22.5
<b>UNITED STATES</b>	<b>340,237</b>	<b>338,538</b>	<b>2,169</b>	<b>2,176</b>	<b>7,380</b>	<b>7,366</b>	<b>4.0</b>	<b>3.2</b>	<b>24.2</b>	<b>20.6</b>

**U.S. BROILER HATCH**

Broiler-type chicks hatched during June 2008 totaled 806 million, down slightly from June 2007. Eggs in incubators totaled 658 million on July 1, 2008, down 1 percent from a year earlier.

Leading breeders placed 7.77 million broiler-type pullet chicks for future domestic hatchery supply flocks during June 2008, down slightly from June 2007.

**BROILER-TYPE CHICKS HATCHED, JUNE**

State	2007	2008	<u>2008</u> <u>2007</u>
	Thousands		Percent
Alabama	112,284	116,961	104
Arkansas	103,828	98,033	94
Delaware	15,002	13,458	90
Florida	4,834	4,832	100
Georgia	125,317	122,423	98
Kentucky	28,039	29,008	103
Louisiana	14,146	13,425	95
Maryland	31,596	31,527	100
Mississippi	68,823	69,187	101
North Carolina	70,701	69,216	98
Oklahoma	25,271	25,728	102
Pennsylvania	14,026	15,565	111
South Carolina	19,906	19,739	99
Texas	55,483	56,565	102
Virginia	23,305	22,766	98
California, Missouri, Tennessee and West Virginia	72,058	72,259	100
Other States 1/	23,710	25,510	108
<b>UNITED STATES</b>	<b>808,329</b>	<b>806,202</b>	<b>100</b>

1/ Not published separately to avoid disclosing data for individual operations.

**U.S. EGG-TYPE CHICKS HATCHED**

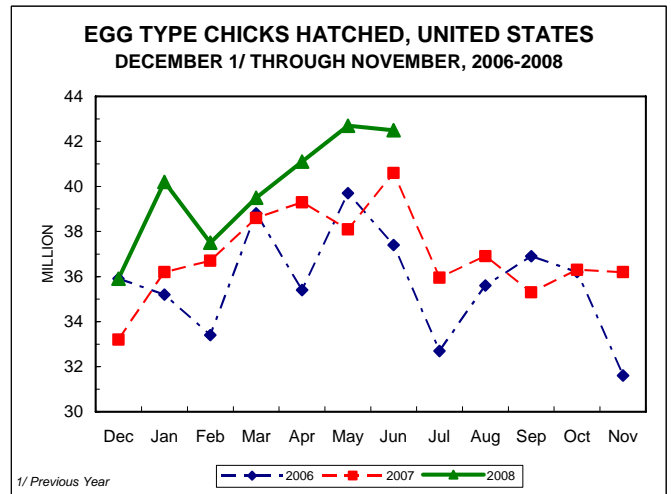
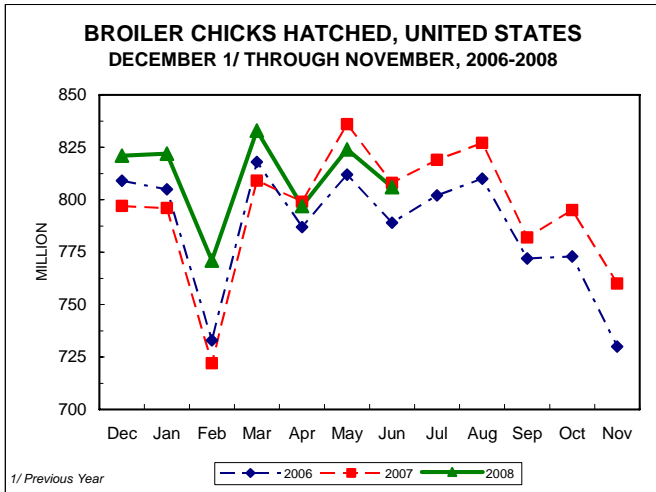
Egg-type chicks hatched during June 2008 totaled 42.5 million, up 5 percent from June 2007. Eggs in incubators totaled 35.9 million on July 1, 2008, up 9 percent from a year ago.

Domestic placements of egg-type pullet chicks for future hatchery supply flocks by leading breeders totaled 231 thousand during June 2008, down 23 percent from June 2007.

**EGG-TYPE CHICKS HATCHED, JUNE**

State	2007	2008	<u>2008</u> <u>2007</u>
	Thousands		Percent
Georgia	2,163	2,092	97
Indiana	4,960	5,831	118
Iowa	8,226	8,239	100
Minnesota	1,161	1,102	95
Pennsylvania	4,646	5,087	109
Other States 1/	19,485	20,187	104
<b>UNITED STATES</b>	<b>40,641</b>	<b>42,538</b>	<b>105</b>

1/ Not published separately to avoid disclosing data for individual operations.



**EGGS IN INCUBATORS, JULY 1**

Geographic Division	Broiler-Type			Egg-Type		
	2007	2008	<u>2008</u> <u>2007</u>	2007	2008	<u>2008</u> <u>2007</u>
	Thousands		Percent	Thousands		Percent
North Atlantic	12,360	13,533	109	5,928	5,350	90
East North Central	11,335	12,842	113	7,088	7,107	100
West North Central	29,198	28,929	99	8,216	9,171	112
South Atlantic	246,454	240,748	98	4,182	3,942	94
South Central	341,467	336,656	99	2,970	5,524	186
West	25,144	25,235	100	4,520	4,828	107
<b>UNITED STATES</b>	<b>665,958</b>	<b>657,943</b>	<b>99</b>	<b>32,904</b>	<b>35,922</b>	<b>109</b>

**POULTRY AND EGG PRICES**

California mid-month market egg price for June 2008 was 96.0 cents per dozen, 23.0 cents above the May mid-month price and up 46.0 cents from June 2007.

Nationally, the June market egg price, at 92.7 cents per dozen, increased 22.9 cents from May and is 42.8 cents above June 2007. The June broiler price, at 48.0 cents per pound, is unchanged from May, but 1.0 cent above a year ago. The June turkey price, at 59.9 cents per pound, is up 1.9 cents from the previous month and up 7.9 cents from a year earlier.

**POULTRY AND EGG AVERAGE PRICES RECEIVED 1/**

Commodity	Unit	June 2007	May 2008	June 2008
		Cents		
<b>CALIFORNIA</b>				
Market Eggs 2/ 3/	Doz.	50.0	73.0	96.0
<b>UNITED STATES</b>				
Chickens-Broilers	Lbs.	47.0	48.0	48.0
Market Eggs 2/ 3/	Doz.	49.9	69.8	92.7
Turkeys 2/	Lbs.	52.0	58.0	59.9

- 1/ The estimated prices shown in the table represent composite average prices received by producers. They are averages for all grades, classes, and methods of sale of each commodity for the State and U.S. as a whole.
- 2/ Mid-month prices.
- 3/ Also referred to as table eggs.

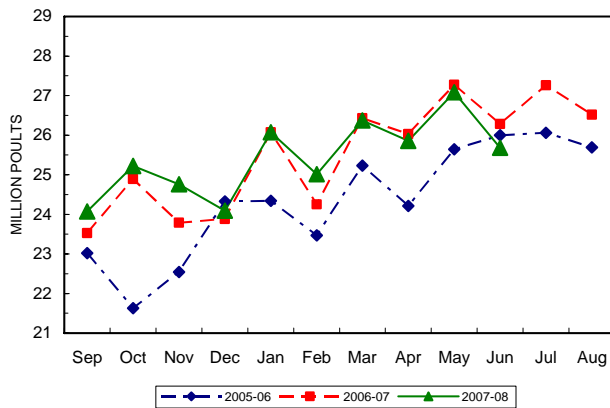
The 25.7 million net poult placements during June 2008 in the United States were down 2 percent from the number placed during the same month a year earlier. Net placements were down 5 percent from the May 2008 total of 27.1 million.

**ALL TURKEYS 1/**

Geographic Division	Eggs In Incubators July 1		2008	Eggs Hatched During June		2008
	2007	2008	2007	2007	2008	2007
	Thousands		Percent	Thousands		Percent
E N Central	4,891	4,777	98	4,380	3,915	89
W N Central	12,541	12,279	98	10,079	9,871	98
N & S Atlantic	10,817	10,678	99	8,259	8,870	107
S Central & West	5,009	5,081	101	3,939	3,542	90
U.S.	33,258	32,815	99	26,657	26,198	98

1/ Regions (No. & So. Atlantic and So. Central & West) combined to avoid disclosure of individual operations.

**NET TURKEY POULT PLACEMENTS, U.S. SEPTEMBER THROUGH AUGUST, 2005-2008**

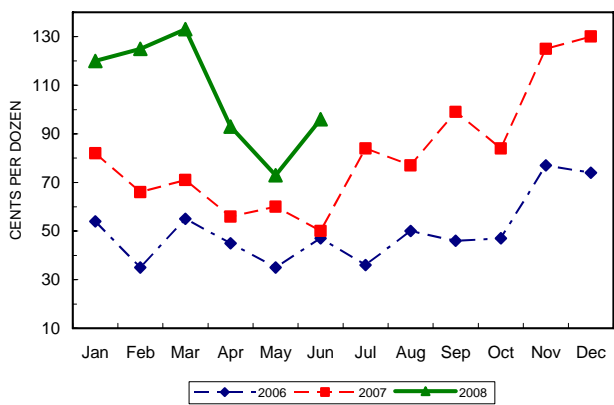


**NET U.S. TURKEY POULT PLACEMENTS 1/**

Month	Total All Breeds		2007-08	Cumulative Total		2007-08
	2006-07	2007-08	2006-07	2006-07	2007-08	2006-07
	Thousands		Percent	Thousands		Percent
Sept.	23,534	24,073	102	23,534	24,073	102
Oct.	24,891	25,222	101	48,425	49,295	102
Nov.	23,792	24,755	104	72,217	74,050	103
Dec.	23,879	24,091	101	96,096	98,141	102
Jan.	26,068	26,067	100	122,164	124,208	102
Feb.	24,249	25,011	103	146,413	149,219	102
Mar.	26,433	26,369	100	172,846	175,588	102
Apr.	26,034	25,863	99	198,880	201,451	101
May 2/	27,266	27,084	99	226,146	228,535	101
June	26,282	25,681	98	252,428	254,216	101
July	27,258			279,686		
Aug.	26,523			306,209		

- 1/ Includes imports, but excludes exports.
- 2/ Revised 2008 data.

**MARKET EGG PRICE, CALIFORNIA JANUARY THROUGH DECEMBER, 2006-2008**



**U.S. TURKEY HATCHERY PRODUCTION**

Turkey eggs in incubators on July 1, 2008, in the United States totaled 32.8 million, down 1 percent from July 1, 2007. Eggs in incubators were up 3 percent from the June 1, 2008 total of 31.9 million eggs. Regional changes from the previous year were: East North Central down 2 percent, West North Central down 2 percent, North and South Atlantic down 1 percent, and South Central and West up 1 percent.

Turkey poults hatched during June 2008, in the United States totaled 26.2 million, down 2 percent from June 2007. Poults hatched were down 4 percent from May 2008 total of 27.3 million poults. Regional changes from the previous year were: East North Central down 11 percent, West North Central down 2 percent, North and South Atlantic up 7 percent, and South Central and West down 10 percent.

**PACIFIC COAST AND UNITED STATES COLD STORAGE**

Commodity	Unit	June 30, 2007	May 31, 2008	June 30, 2008	<u>Jun. 2008</u> <u>Jun. 2007</u>	<u>Jun. 2008</u> <u>May. 2008</u>
		<i>Thousands</i>			<i>Percent</i>	
<b>PACIFIC COAST</b>						
Turkeys	Lbs.	35,444	30,332	34,368	97	113
Chickens	Lbs.	25,715	37,605	34,075	133	91
Ducks	Lbs.	54	144	161	298	112
Total Frozen Poultry Supplies	Lbs.	61,213	68,081	68,604	112	101
<b>UNITED STATES</b>						
Turkeys	Lbs.	448,410	522,421	562,697	125	108
Chickens	Lbs.	643,985	755,134	768,718	119	102
Ducks	Lbs.	7,752	2,432	1,713	22	70
Total Frozen Poultry Supplies	Lbs.	1,100,147	1,279,987	1,333,128	121	104
Eggs, Frozen	Lbs.	17,411	12,443	16,236	93	130