



California Poultry Report

Cooperating with the California Department of Food and Agriculture

California Field Office · P.O. Box 1258 · Sacramento, CA 95812 · (916) 498-5161 · (916) 498-5186 Fax · www.nass.usda.gov/ca

Released: June 27, 2008 · Frequency: Monthly · (USPS 598-310) VOL. 29 NO. 6

HIGHLIGHTS IN THIS ISSUE:

Layer and Egg Production	1
Chick Hatch and Eggs in Incubators.....	2
Turkey Poults Hatched and Placed.....	3
Poultry and Egg Prices	3
Cold Storage Holdings.....	4

U.S. APRIL MARCH EGG PRODUCTION

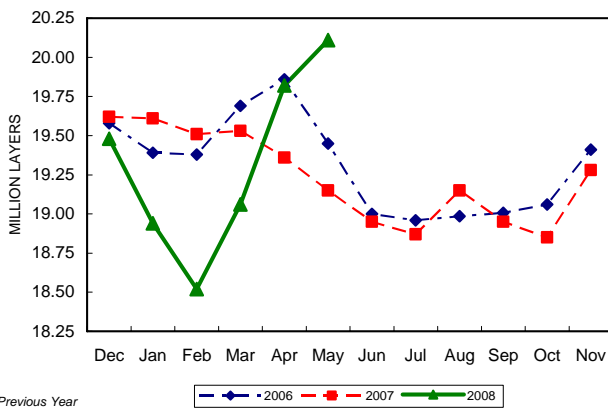
U.S. egg production totaled 7.57 billion during May 2008, down 1 percent from last year. Production included 6.43 billion table eggs, and 1.15 billion hatching eggs, of which 1.08 billion were broiler-type and 68 million were egg-type. The total number of layers during May 2008 averaged 340 million, down 1 percent from last year. May egg production per 100 layers was 2,226 eggs, unchanged from May 2007.

CALIFORNIA EGG PRODUCTION

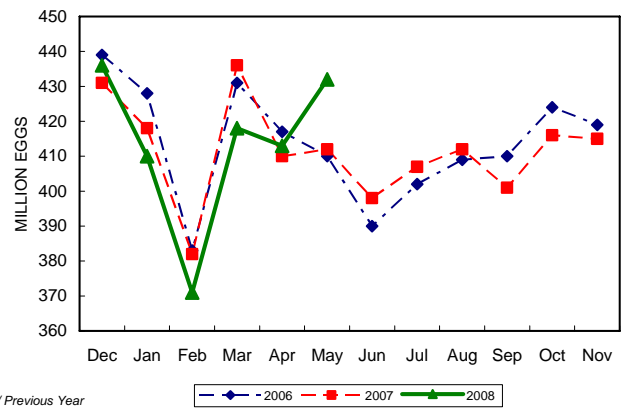
California's egg production during May totaled 432 million, an increase of 19.0 million from April's production and 20.0 million above May 2007. The average number of layers during the month totaled 20.1 million, up 1 percent from last month and 5 percent above May 2007. Eggs per 100 layers during the month were 2,148 compared to 2,084 a month earlier and 2,152 in May 2007.

All layers in the U.S. on June 1, 2008 totaled 340 million, down slightly from last year. The 340 million layers consisted of 280 million layers producing table or market type eggs, 57.0 million layers producing broiler-type hatching eggs, and 2.79 million layers producing egg-type hatching eggs. Rate of lay per day on June 1, 2008, averaged 71.7 eggs per 100 layers, down 1 percent from June 1, 2007.

AVERAGE NUMBER OF LAYERS, CALIFORNIA
DECEMBER 1/ THROUGH NOVEMBER, 2006-2008



EGG PRODUCTION, CALIFORNIA
DECEMBER 1/ THROUGH NOVEMBER, 2006-2008



LAYER NUMBERS AND EGG PRODUCTION DURING MAY, FORCED MOLTING AS OF JUNE 1

State	Average Number of Layers on Hand		Eggs Per 100 Layers		Total Egg Production		Layers Being Molted		Layers With Molt Completed	
	2007	2008	2007	2008	2007	2008	2007	2008	2007	2008
	Thousands		Number		Millions		Percent			
Alabama	9,183	9,502	1,906	1,926	175	183	2.0	1.5	5.5	3.5
Arkansas	14,363	14,036	1,991	1,952	286	274	2.5	1.0	12.0	9.0
California	19,148	20,114	2,152	2,148	412	432	5.0	7.5	32.5	28.0
Georgia	19,246	18,685	2,058	2,050	396	383	3.0	2.5	14.0	10.0
Indiana	24,856	24,251	2,265	2,284	563	554	4.0	3.5	32.5	35.5
Iowa	52,035	53,681	2,289	2,291	1,191	1,230	3.5	3.0	37.5	32.0
North Carolina	12,255	12,587	2,089	2,089	256	263	0.0	1.0	8.0	8.5
Ohio	26,174	26,092	2,266	2,250	593	587	2.0	8.0	23.0	14.0
Pennsylvania	22,348	21,525	2,398	2,420	536	521	2.0	2.0	15.0	11.0
Texas	18,495	18,413	2,260	2,200	418	405	5.5	2.0	23.5	24.5
United States	342,469	340,319	2,226	2,226	7,622	7,574	3.6	3.5	24.1	20.7

U.S. BROILER HATCH

Broiler-type chicks hatched during May 2008 totaled 824 million, down 1 percent from May 2007. Eggs in incubators totaled 674 million on June 1, 2008, down 1 percent from a year earlier.

Leading breeders placed 7.96 million broiler-type pullet chicks for future domestic hatchery supply flocks during May 2008, down 1 percent from May 2007.

BROILER-TYPE CHICKS HATCHED, MAY

State	2007	2008	<u>2008</u> <u>2007</u>
	Thousands		Percent
Alabama	115,972	119,047	103
Arkansas	106,622	100,720	94
Delaware	15,386	14,180	92
Florida	5,108	4,949	97
Georgia	129,205	125,611	97
Kentucky	28,775	28,710	100
Louisiana	14,523	13,751	95
Maryland	32,545	32,681	100
Mississippi	70,629	70,642	100
North Carolina	73,185	71,786	98
Oklahoma	26,018	26,202	101
Pennsylvania	14,528	15,468	106
South Carolina	20,299	19,933	98
Texas	56,440	56,330	100
Virginia	24,236	22,332	92
California, Missouri, Tennessee and West Virginia	75,344	73,955	98
Other States 1/	26,958	27,421	102
UNITED STATES	835,773	823,718	99

1/ Not published separately to avoid disclosing data for individual operations.

U.S. EGG-TYPE CHICKS HATCHED

Egg-type chicks hatched during May 2008 totaled 42.7 million, up 12 percent from May 2007. Eggs in incubators totaled 37.6 million on June 1, 2008, down 2 percent from a year ago.

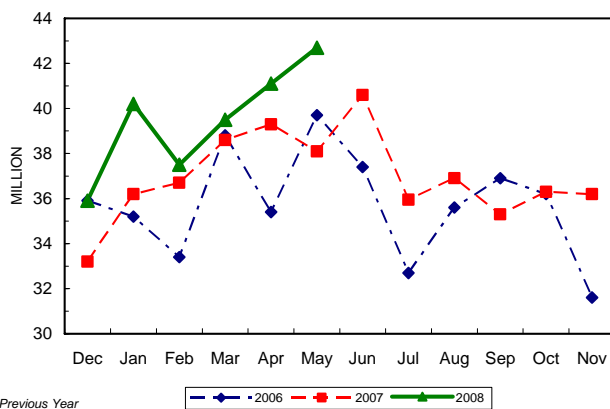
Domestic placements of egg-type pullet chicks for future hatchery supply flocks by leading breeders totaled 233 thousand during May 2008, up 22 percent from May 2007.

EGG-TYPE CHICKS HATCHED, MAY

State	2007	2008	<u>2008</u> <u>2007</u>
	Thousands		
Georgia	2,265	2,362	104
Indiana	5,761	5,420	94
Iowa	7,857	7,658	97
Minnesota	1,065	888	83
Pennsylvania	4,499	5,463	121
Other States 1/	16,633	20,933	126
UNITED STATES	38,080	42,724	112

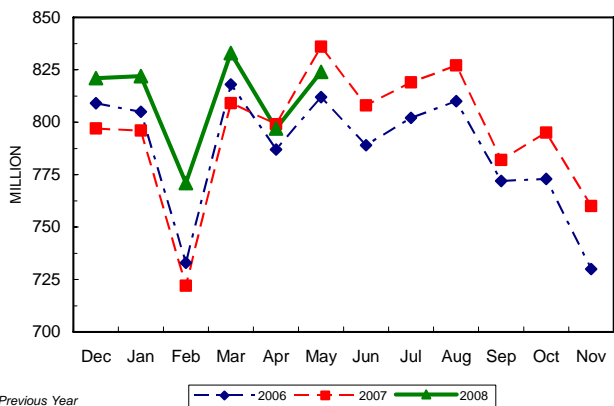
1/ Not published separately to avoid disclosing data for individual operations.

**EGG TYPE CHICKS HATCHED, UNITED STATES
DECEMBER 1/ THROUGH NOVEMBER, 2006-2008**



1/ Previous Year

**BROILER CHICKS HATCHED, UNITED STATES
DECEMBER 1/ THROUGH NOVEMBER, 2006-2008**



1/ Previous Year

EGGS IN INCUBATORS, JUNE 1

Geographic Division	Broiler-Type			Egg-Type		
	2007	2008	<u>2008</u> <u>2007</u>	2007	2008	<u>2008</u> <u>2007</u>
	Thousands		Percent	Thousands		Percent
North Atlantic	12,147	13,493	111	6,027	5,102	85
East No. Central	11,237	12,094	108	7,061	8,136	115
West No. Central	30,467	29,922	98	10,001	9,759	98
South Atlantic	251,449	244,831	97	5,061	5,121	101
South Central	349,327	348,060	100	4,636	4,917	106
West	25,472	25,813	101	5,764	4,560	79
UNITED STATES	680,099	674,213	99	38,550	37,595	98

POULTRY AND EGG PRICES

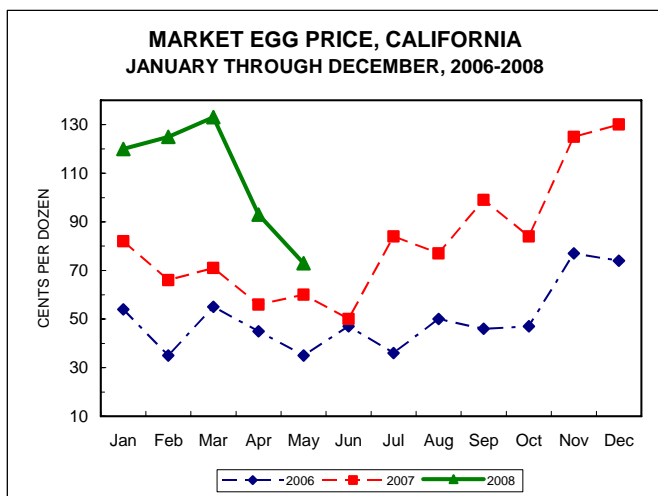
California mid-month market egg price for May 2008 was \$0.73 per dozen, 20.0 cents below the April mid-month price but 13.0 cents above from May 2007.

Nationally, the May market egg price, at 69.8 cents per dozen, decreased 18.6 cents from April but is 8.0 cents above May 2007. The May broiler price, at 48.0 cents per pound, is up 2.0 cents from April and 1.0 cent above a year ago. The May turkey price, at 58.0 cents per pound, is up 2.9 cents from the previous month and 9.7 cents from a year earlier.

POULTRY AND EGG AVERAGE PRICES RECEIVED 1/

Commodity	Unit	May 2007	April 2008	May 2008
		Cents		
CALIFORNIA				
Market Eggs 2/ 3/	Doz.	60.0	93.0	73.0
UNITED STATES				
Chickens-Broilers	Lbs.	47.0	46.0	48.0
Market Eggs 2/ 3/	Doz.	61.8	88.4	69.8
Turkeys 2/	Lbs.	48.3	55.1	58.0

- 1/ The estimated prices shown in the table represent composite average prices received by producers. They are averages for all grades, classes, and methods of sale of each commodity for the State and U.S. as a whole.
- 2/ Mid-month prices.
- 3/ Also referred to as table eggs.



U.S. TURKEY HATCHERY PRODUCTION

Turkey eggs in incubators on June 1, 2008, in the United States totaled 31.9 million, down 4 percent from June 1, 2007. Eggs in incubators were down 4 percent from the May 1, 2008 total of 33.1 million eggs. Regional changes from the previous year were: East North Central down 13 percent, West North Central down 3 percent, North and South Atlantic up 4 percent, and South Central and West down 14 percent.

Turkey poults hatched during May 2008, in the United States totaled 27.3 million, down slightly from May 2007. Poults hatched were up 3 percent from April 2008 total of 26.5 million poults. Regional changes from the previous year were: East North Central up 3 percent, West North Central down 5 percent, North and South Atlantic up 3 percent, and South Central and West up 2 percent.

The 26.6 million net poults placed during May 2008 in the United States were down 3 percent from the number placed during the same month a year earlier. Net placements were up 3 percent from the April 2008 total of 25.9 million.

ALL TURKEYS 1/

Geographic Division	Eggs In Incubators June 1		Eggs Hatched During May		2008 2007	
	2007	2008	2007	2008		
	Thousands		Percent	Thousands		Percent
E N Central	5,225	4,549	87	3,974	4,081	103
W N Central	12,202	11,856	97	10,795	10,264	95
N & S Atlantic	10,677	11,153	104	8,943	9,186	103
S Central & West	5,051	4,343	86	3,693	3,755	102
U.S.	33,155	31,901	96	27,405	27,286	100

1/ Regions (No. & So. Atlantic and So. Central & West) combined to avoid disclosure of individual operations.

NET U.S. TURKEY POULT PLACEMENTS 1/

Month	Total All Breeds		Cumulative Total		2007-08 2006-07	
	2006-07	2007-08	2006-07	2007-08		
	Thousands		Percent	Thousands		Percent
Sept.	23,534	24,073	102	23,534	24,073	102
Oct.	24,891	25,222	101	48,425	49,295	102
Nov.	23,792	24,755	104	72,217	74,050	103
Dec.	23,879	24,091	101	96,096	98,141	102
Jan.	26,068	26,067	100	122,164	124,208	102
Feb.	24,249	25,011	103	146,413	149,219	102
Mar.	26,433	26,369	100	172,846	175,588	102
Apr. 2/	26,034	25,863	99	198,880	201,451	101
May	27,266	26,574	97	226,146	228,025	101
June	26,282			252,428		
July	27,258			279,686		
Aug.	26,523			306,209		

- 1/ Includes imports, but excludes exports.
- 2/ Revised 2008 data.



PACIFIC COAST AND UNITED STATES COLD STORAGE

Commodity	Unit	May 31, 2007	April 30, 2008	May 31, 2008	<u>May. 2008</u> May. 2007	<u>May. 2008</u> Apr. 2008
		<i>Thousands</i>			<i>Percent</i>	
PACIFIC COAST						
Turkeys	Lbs.	24,993	25,506	29,451	118	115
Chickens	Lbs.	26,615	36,718	37,630	141	102
Ducks	Lbs.	50	207	144	288	70
Total Frozen Poultry Supplies	Lbs.	51,658	62,431	67,225	130	108
UNITED STATES						
Turkeys	Lbs.	397,984	491,283	516,401	130	105
Chickens	Lbs.	612,267	752,875	754,535	123	100
Ducks	Lbs.	7,536	3,347	2,391	32	71
Total Frozen Poultry Supplies	Lbs.	1,017,787	1,247,505	1,273,327	125	102
Eggs, Frozen	Lbs.	15,165	16,034	12,244	81	76