

Office of State Fire Marshal 2007 fire season briefing



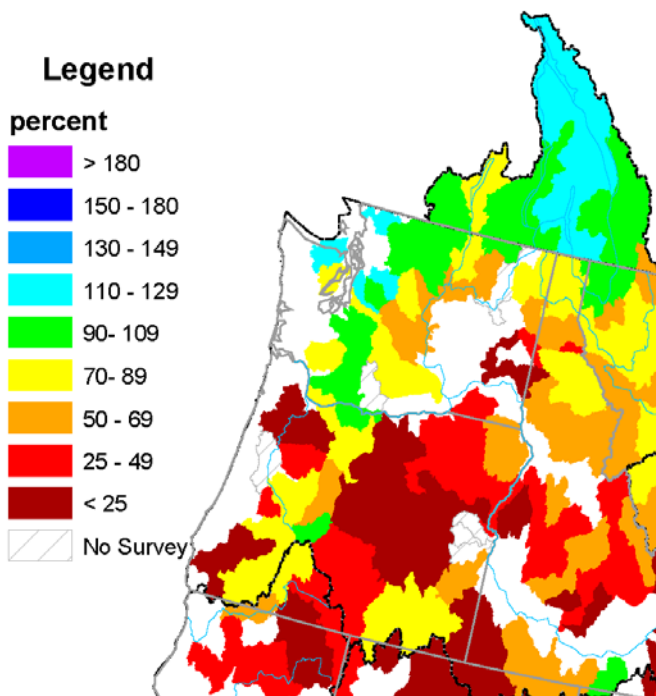
June 2007 · State Fire Marshal Nancy Orr · 4760 Portland Road NE · Salem, Oregon 97305-1760

2007 Seasonal outlook

According to the Northwest Interagency Coordination Center, most of the state should experience an **AVERAGE** 2007 fire season. The exception is the mountain area in north-eastern Oregon where winter and spring precipitation and snowpack have been below average.

The Oregon Office of State Fire Marshal (OSFM) maintains a strong partnership with the Oregon Department of Forestry and other natural resource agencies and we rely on these partners to provide ongoing monitoring of seasonal fire severity conditions.

Mountain Snowpack as of May 1, 2007



OSFM readiness & coordination

The role of the OSFM in responding to wild-fires is to manage the state's structural protection response and resources during a declared conflagration.

The Oregon Fire Service Mobilization Plan provides the structure, operating guidelines and direction for deployment of Oregon fire service resources during conflagrations and other emergencies.

Emergency Response Center (ERC)

OSFM staff, working from the ERC in the Anderson Readiness Center, alert, dispatch and track the response and return of mobilized resources during a conflagration. Staff facilitate communications with incident resources and provide incident status information to agency managers.

The ERC has been updated and retrofitted with improved computers, workstations and communication equipment providing a more effective working environment during emergencies.

Incident Management Teams (IMTs)

During a conflagration or other state emergency, an OSFM IMT accompanies mobilized structural firefighting resources to provide support and ensure safe, efficient and effective operations.

Communications

The State Fire Net provides a common communications channel for fire service use during a conflagration or other multiple agency responder incidents. During 2006-07 the State Fire Net underwent extensive improvements including the upgrade of 23 mountain-top

antenna sites and base stations to improve system reliability and meet federal standards. The upgrades enhance:

- statewide two-way communication on a mutual radio frequency
- communication directly to the ERC allowing incident commanders to provide rapid incident updates or requests for additional resources

The OSFM also maintains a mobile emergency communications vehicle and three communications caches, further improving emergency communications. Two of the three caches are stationed in central Oregon and another is located on the southern Oregon coast.

The communications vehicle is equipped with:

- An on-board generator
- Satellite dish for high speed internet access
- Roof-mounted antenna system for base radios
- VHF, UHF and 800MHz radio base stations
- Red Cross Lo-Band base station
- Amateur radio HF base station
- VHF/UHF cross-band radio repeater
- Satellite and cellular phones
- Two 2.4 GHz wireless phone sets
- Three laptop computers
- 60 - VHF, 5 watt hand-held radios
- 25 - UHF 5 watt hand-held radios
- Three portable multi-frequency repeaters

The communications vehicle is also equipped with geographic computer modeling capability enabling identification of terrain that may impede communications or that may be used to improve communications in the affected area. The computer system can be used to design temporary communication systems to overcome problems in these affected areas. Six self-contained portable repeaters are available to be programmed and deployed to improve communication links to state communication sites.

The emergency communications vehicle enables field personnel to provide:

- Interoperability on scene
- Satellite internet access via wired or wireless hotspot
- Cellular phone communications
- Satellite phone communications
- Voice over internet protocol (VoIP) communications
- programmed, hand-held radios to emergency personnel
- Communications via high frequency radio with local, county, state and federal organizations



Fire service communication readiness

Oregon fire departments have programmed the State Fire Net frequency into their communications equipment making them interoperable on that channel. This enhances local structural fire service communications and enables them to deploy, ready to communicate to assist other communities.