



# PHIN Messaging System

## JOIN US LIVE for Monthly PHINMS User Group Calls

Since January 2007 over one hundred PHINMS users have enthusiastically joined monthly live user sessions, sharing ideas for making the product better. “The response has been tremendous,” Tom Brinks, PHINMS Project Manager, said. “We have over forty customers during every call from over twenty-five US public health organizations. Our customers are enthusiastic, and they give us great ideas for enhancing and using the product.”

The goals of the PHINMS User’s group are to grow the product’s use among the public health community and to provide direction for future releases that meet real business needs. The live webinar meetings occur on the fourth Thursday of each month, from 1PM to 2PM ET. Using Microsoft’s Live Meeting software, you can click on a link and go straight to a live presentation.

Live Meeting is one of the ways that Tim Morris, the CDC/National Center for Public Health Informatics/Division of Informatics Shared Services director, is using to “reach out” and receive input for PHINMS product direction from those who use it the most. The next PHINMS release (2.8) will be based on features prioritized during one of these monthly User Group live sessions.

The 2007 PHIN Conference will include a PHINMS workshop on Thursday, August 30th to meet with technical users and perform a “requirements discovery” for the next generation of PHINMS (3.0) due out in late 2008. Release 3.0 will be Web services interoperable and (based on user inputs) needs to significantly improve scalability while reducing certification maintenance overhead. A new approach to security token authentication will be discussed during the workshop.

To request to join a live user session, email [TBrinks@cdc.gov](mailto:TBrinks@cdc.gov).

### A Forum for Your Ideas for Enhancements and Improvements

Have you been to the PHINMS forum? You now have another way to quickly communicate your ideas for enhancing and improving PHINMS. Log on and speak up. Your peers and the PHINMS development team want to hear you. Go to <https://team.cdc.gov/team/cdc/dispatch.cgi>. Need a user account ? Send an email to [MBowman@cdc.gov](mailto:MBowman@cdc.gov).

The screenshot shows the PHINMS forum interface. At the top, there is a header for "CDC Team" and navigation links like "Web files", "Site map", and "Bookmarks". Below this, there are tabs for "Workspace", "My summary", "Discussions", "Calendars", "To-do lists", and "Meetings". The main content area shows a list of discussions under the heading "Enhancing PHINMS: Ideas and Suggestions".

Unseen	Number	Type	Task	Title	Replies	Author	Activity date
	7.			<a href="#">Documentation Improvements</a>	(2)	Bryan Siebuhr	05/09/07 04:24 PM
	5.			<a href="#">What do you want PHINMS to do for you?</a>	(9)	Michele Bowman	05/10/07 02:34 PM

At the bottom of the screenshot, there is a "View entry number" field with an "OK" button.



# Smoother Set Up and More Choices

## Coming Soon to PHINMS

**New Digital Certificate Management.** Whether you are brand new to PHINMS or are a seasoned PHINMS pro, you'll feel the smoother set up process using PHINMS version 2.8.00. You can import your digital certificate, which verifies your identity, using the PHINMS console instead of going through your Web browser, which means less configurations and less time – and moving that digital certificate to the next PHINMS installation is easier, too.

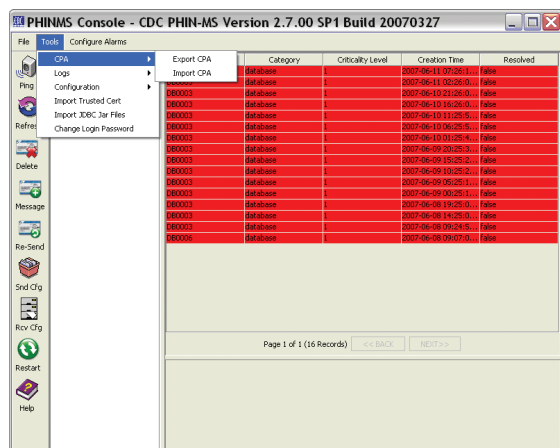
**Better Installation Wizards.** We've put more custom choices into the installation wizards – so you can get exactly what you want during the initial set up, instead of having to customize the software later. Things you've wanted such as setting up an Oracle database and selecting different ports.

**Web Services Adapter.** We're adding a Web services adapter, too. Use PHINMS through a Web application instead of installing and administering software on your systems.

## Send Your CPA to Your Messaging Partner

Exchanging messages is easier in 2.7.00 SP1. If you want to send messages to a partner, you need to get your partner's collaboration protocol agreement (CPA).

Use the PHINMS console to export the CPA so you can send it to your partner. If you need to get your partner's CPA, use the console to import it.



## Key PHIN Contact Information

Email: PHINtech@cdc.gov Help Desk: 800-532-9929 Website: <http://www.cdc.gov/phin>