



Jill Ryan

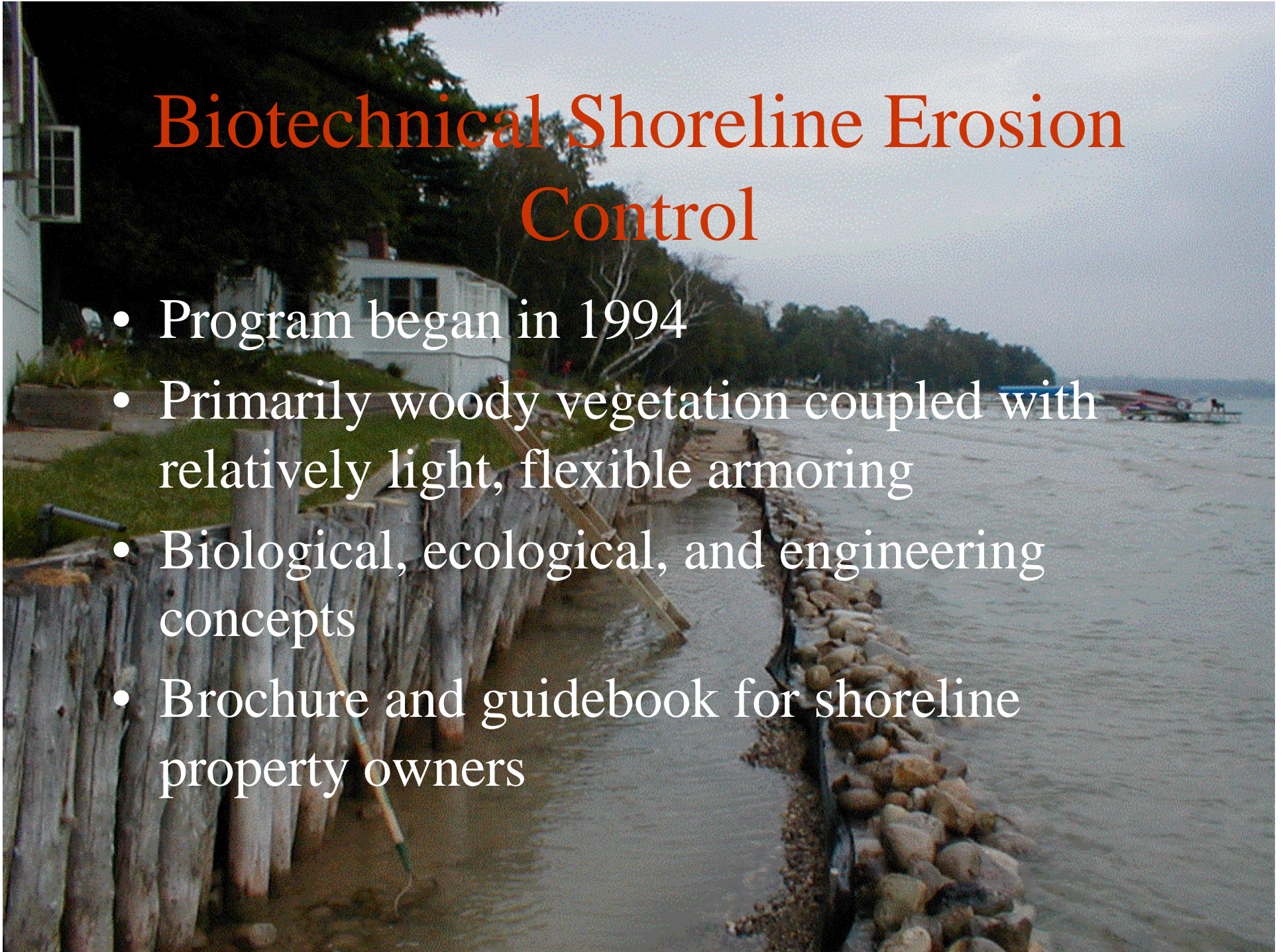


Organizational Background

- Formed in 1979
- Nonprofit corporation
- Methods
- Principal stakeholders
- Expanded successes to the entire Great Lakes basin

Biotechnical Shoreline Erosion Control

- Program began in 1994
- Primarily woody vegetation coupled with relatively light, flexible armoring
- Biological, ecological, and engineering concepts
- Brochure and guidebook for shoreline property owners



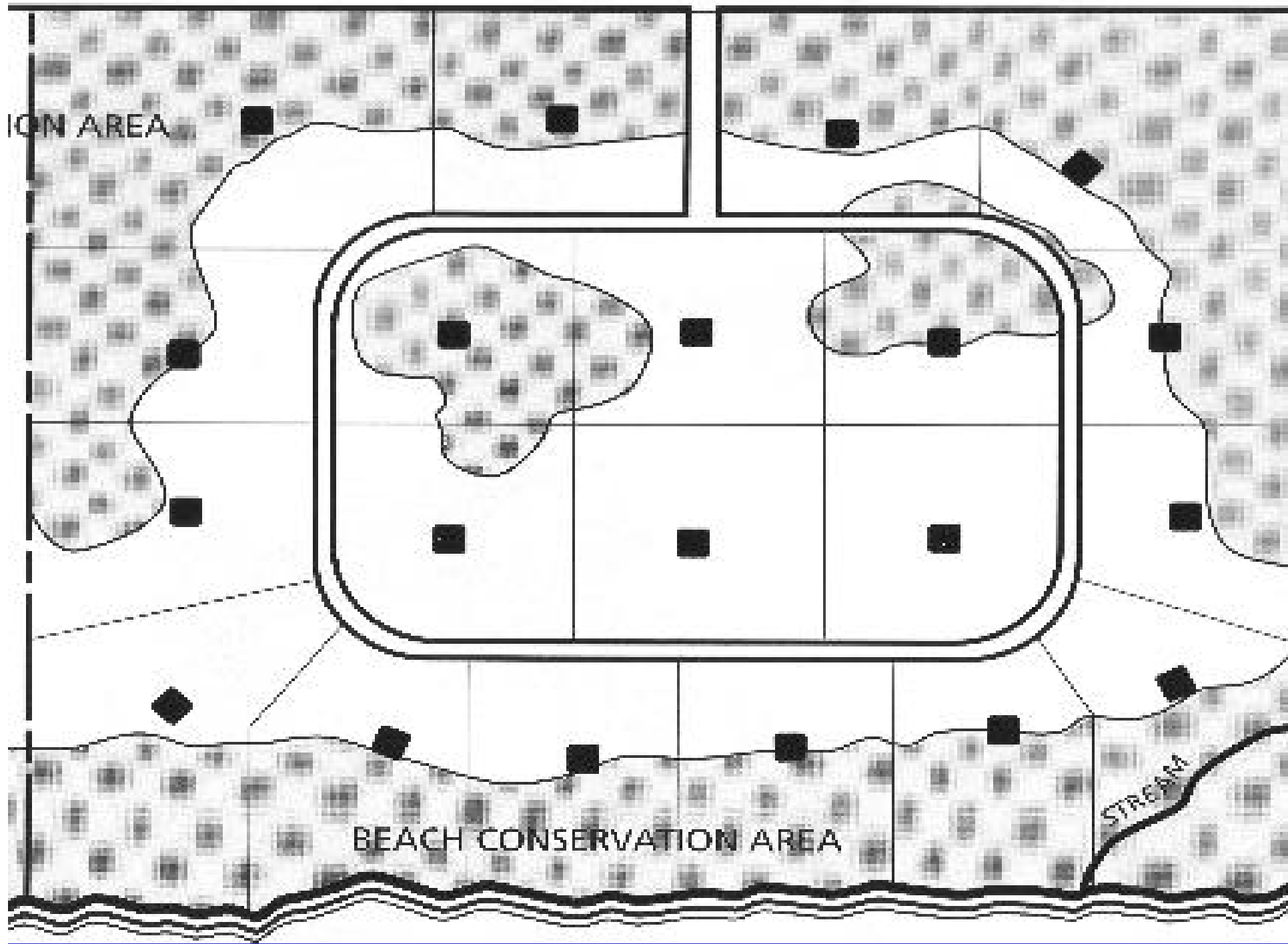
Biotechnical Shoreline Erosion Control

- Projects at about 10 sites per year
- Protects both water quality and the investments of property owners
- Prevented an estimated 270 tons of sediments to date
- Restores wildlife habitat, improves appearance, helps prevent overland runoff, and takes up nutrients
- Shoreline erosion assessments and recommendations



Conservation Planning and Design

- Project Goal
- Developed a conservation planning implementation manual
- Attempts to preserve a minimum of 50% of the property in open space,
- Follow-up projects
- Demonstration sites





LAKE QUALITY



Watershed Planning and Implementation Projects

- Promoted and modeled watershed management as the best method to protect water quality and aquatic habitats
- Implementation activities
- Managing water resources from a watershed perspective provides:
 - Long-term protection
 - Greater understanding of our spectacular water resources

The background of the slide is a photograph of a natural landscape. In the foreground, there is a dense thicket of bare, brownish-red branches, likely from a shrub or small tree. In the middle ground, a calm body of water is visible, reflecting the overcast sky. The background shows a line of trees, some evergreen and some bare, under a grey, cloudy sky. The overall scene is a typical wetland or riparian area in a dormant season.

Realtor and Developer Wetland Education Program

- Primary Goal
- Gathered information to determine the most successful ways to balance the protection of natural areas with the development of home sites
- “A Landscape of Homes and Wetlands”
- Training programs

The Great Lakes Aquatic Habitat Network and Fund

- Invests in the ability of citizens to get involved at the community level
- Provides consultation and financial resources, shares information, and fosters
- More than 180 grants totaling nearly \$350,000 to support citizen initiatives
- Network Hubs in each Great Lake state and Ontario