

# Development of Native Grass and Forb Seed for Shallow Soil Sites – Superior National Forest

## FY 2007 Accomplishments



*Canada goldenrod producing seed*

Year Awarded: 2005

Project completion: 2008

Report number: 3 of 4

Expenditures:

- FY05 funding \$30,000; expend. \$7,872; obligated \$19,300

Contractors:

Prairie Restorations/Boreal Natives  
3943 Munger Shaw Rd  
Cloquet, MN 55720

Jubilee Nursery  
N12025 1010<sup>th</sup> St.  
Bloomer, WI 54724

Leaning Pine Native Landscape  
3130 S. Camp Amnicon Rd.  
South Range, WI 54874

Contact Person & phone number:

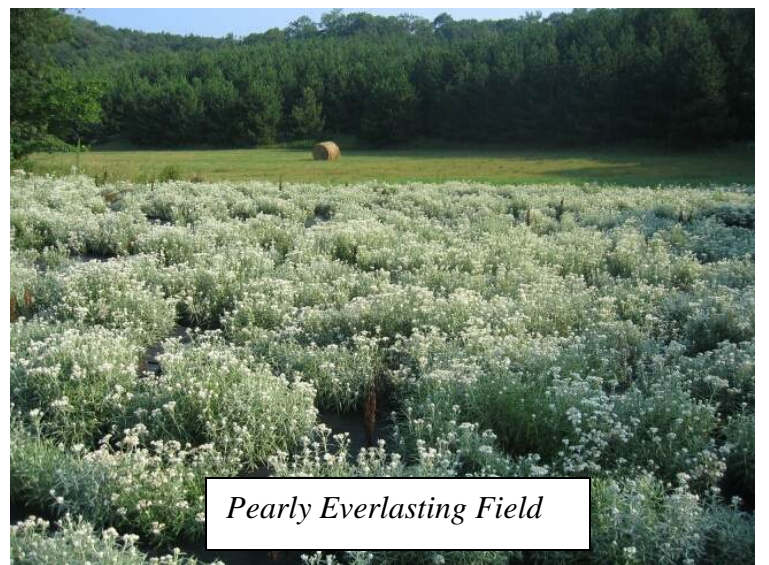
Jack Greenlee, (218) 229-8817

### Background

- Collected seed from 6 grass & wildflower species:
  - Grasses: false melic grass, slimleaf panic grass, mountain rice grass
  - Forbs: Canada goldenrod, yarrow, pearly everlasting
- Awarded Contracts for Seed Production to 3 Local Nurseries
- By end of 2008 growing season, nurseries will produce 55 pounds of local native seed for revegetating disturbed areas on shallow and droughty soil sites
- In future, nurseries will have local seed source for the Superior NF on hand and ready for production to meet our revegetation needs.

### 2007 Accomplishments

- For Canada goldenrod, yarrow, pearly everlasting, and false melic grass, planted fields are growing well and some seed has been collected for Canada goldenrod and pearly everlasting
- Shade structure for false melic grass collapsed - nursery had to replace some plants but should be on track to harvest target amount of seed in fall of 2008.
- Pearly everlasting attacked by worms this year but infestation caught early and controlled.
- Are learning that slimleaf panic grass and mountain ricegrass not suited to cultivation – low seed yields and poor germination. Will not get target amount of seed from these two species.



*Pearly Everlasting Field*



**Superior National Forest**  
8901 Grand Ave Place  
Duluth, MN 55808