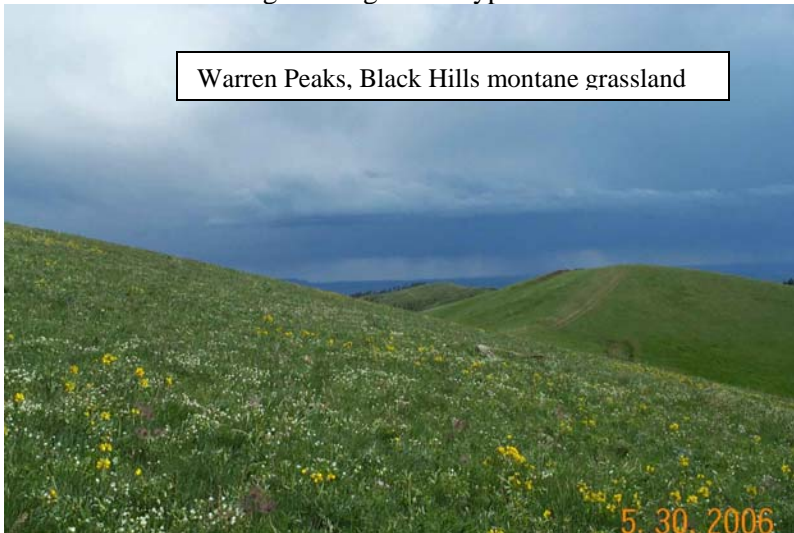


Restoration of Black Hills Montane Grassland Sites

2007 Accomplishments

The montane grasslands endemic to the Black Hills are wildflower-rich. Their extent has been severely decreased with Euro-American settlement since the late 1800s. Recent surveys confirm they are one of the most endangered vegetation types in the Black Hills.



Black Hills National Forest partnered with Rocky Mountain Research Station (RMRS) – Rapid City to restore montane grasslands and develop native plant materials for the Black Hills region.

- Seeds of 5 Black Hills montane grassland species and 45 species from other zones of the Forest were collected.
- Seeds of select species were sent to the Bessey Nursery for growing plugs.
- Additional funding will be sought in 2008 for planting plugs in a montane grassland restoration site with volunteers from the Great Plains Native Plant Society.
- Balance of the seed was cleaned at RMRS lab.
- A graduate student was funded by RMRS to work on seed collecting/processing, with the intent to determine the best species for different revegetation purposes.
- Preparation of a demonstration plot was started for educating the public, commercial growers, and others regarding possible partner involvement; experimental transplanting of plugs from Black Hills National Forest was begun.

Both the Black Hills montane grassland restoration project and RMRS native plant project made good starts with the funding received in 2007. The projects will make a joint funding proposal for 2008 to continue the montane grassland restoration project and establish a permanent native plant material program for revegetation projects on public and private lands in the Black Hills.

Year Awarded: 2007

Project completion: 2008

Report number: 1

Funding: FY07 \$16,000

Expenditures:

- | | |
|----------------------------|---------|
| • Seed collecting/cleaning | \$8,000 |
| • Supervisory time | \$2,000 |
| • Demo plot fencing | \$1,000 |
| • Grow seed for plugs | \$5,000 |

Partners:

- Rocky Mountain Research Station
- USFS Bessey Nursery
- Great Plains Native Plant Society

Contact:

Beth Burkhart
Black Hills NF Forest Botanist
(605) 673-9343



Prairie dropseed (*Sporobolus heterolepis*) ripe for seed collecting. This native grass is a signature species in Black Hills montane grasslands.

Black Hills National Forest
1019 N. 5th St.
Custer, SD 57730

