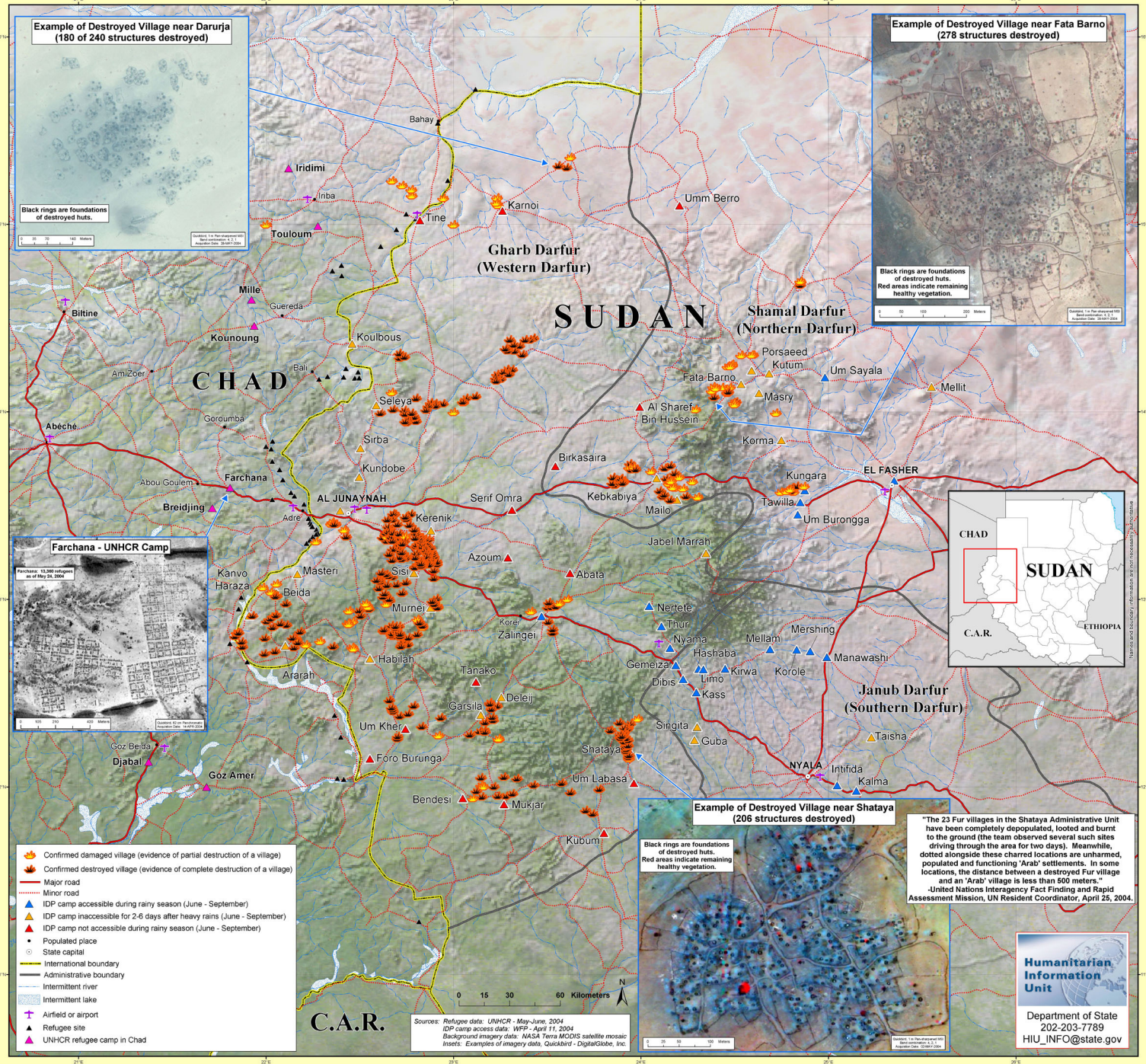


# Sudan (Darfur) - Chad Border Region Confirmed Damaged and Destroyed Villages

UNCLASSIFIED

© COPYRIGHT 2004 DigitalGlobe, Inc. (All Rights Reserved.)  
DigitalGlobe and the DigitalGlobe logos are trademarks of DigitalGlobe, Inc. The use and/or dissemination of this data and/or any product in any way derived therefrom are restricted. Unauthorized use and/or dissemination is prohibited.  
License Type: USCG Clearwater License Agreement with NSA  
Source: Quickbird, 62 cm Panchromatic



**Example of Destroyed Village near Darurja  
(180 of 240 structures destroyed)**

**Example of Destroyed Village near Fata Barno  
(278 structures destroyed)**

Black rings are foundations of destroyed huts.

Black rings are foundations of destroyed huts. Red areas indicate remaining healthy vegetation.



**Farchana - UNHCR Camp**



CHAD  
SUDAN  
ETHIOPIA  
C.A.R.

- Confirmed damaged village (evidence of partial destruction of a village)
- Confirmed destroyed village (evidence of complete destruction of a village)
- Major road
- Minor road
- IDP camp accessible during rainy season (June - September)
- IDP camp inaccessible for 2-6 days after heavy rains (June - September)
- IDP camp not accessible during rainy season (June - September)
- Populated place
- State capital
- International boundary
- Administrative boundary
- Intermittent river
- Intermittent lake
- Airfield or airport
- Refugee site
- UNHCR refugee camp in Chad

**Example of Destroyed Village near Shataya  
(206 structures destroyed)**

Black rings are foundations of destroyed huts. Red areas indicate remaining healthy vegetation.

"The 23 Fur villages in the Shataya Administrative Unit have been completely depopulated, looted and burnt to the ground (the team observed several such sites driving through the area for two days). Meanwhile, dotted alongside these charred locations are unharmed, populated and functioning 'Arab' settlements. In some locations, the distance between a destroyed Fur village and an 'Arab' village is less than 500 meters."  
-United Nations Interagency Fact Finding and Rapid Assessment Mission, UN Resident Coordinator, April 25, 2004.

Sources: Refugee data: UNHCR - May-June 2004  
IDP camp access data: WFP - April 11, 2004  
Background imagery data: NASA Terra MODIS satellite mosaic  
Insets: Examples of imagery data, Quickbird - DigitalGlobe, Inc.

**Humanitarian Information Unit**

Department of State  
202-203-7789  
HIU\_INFO@state.gov