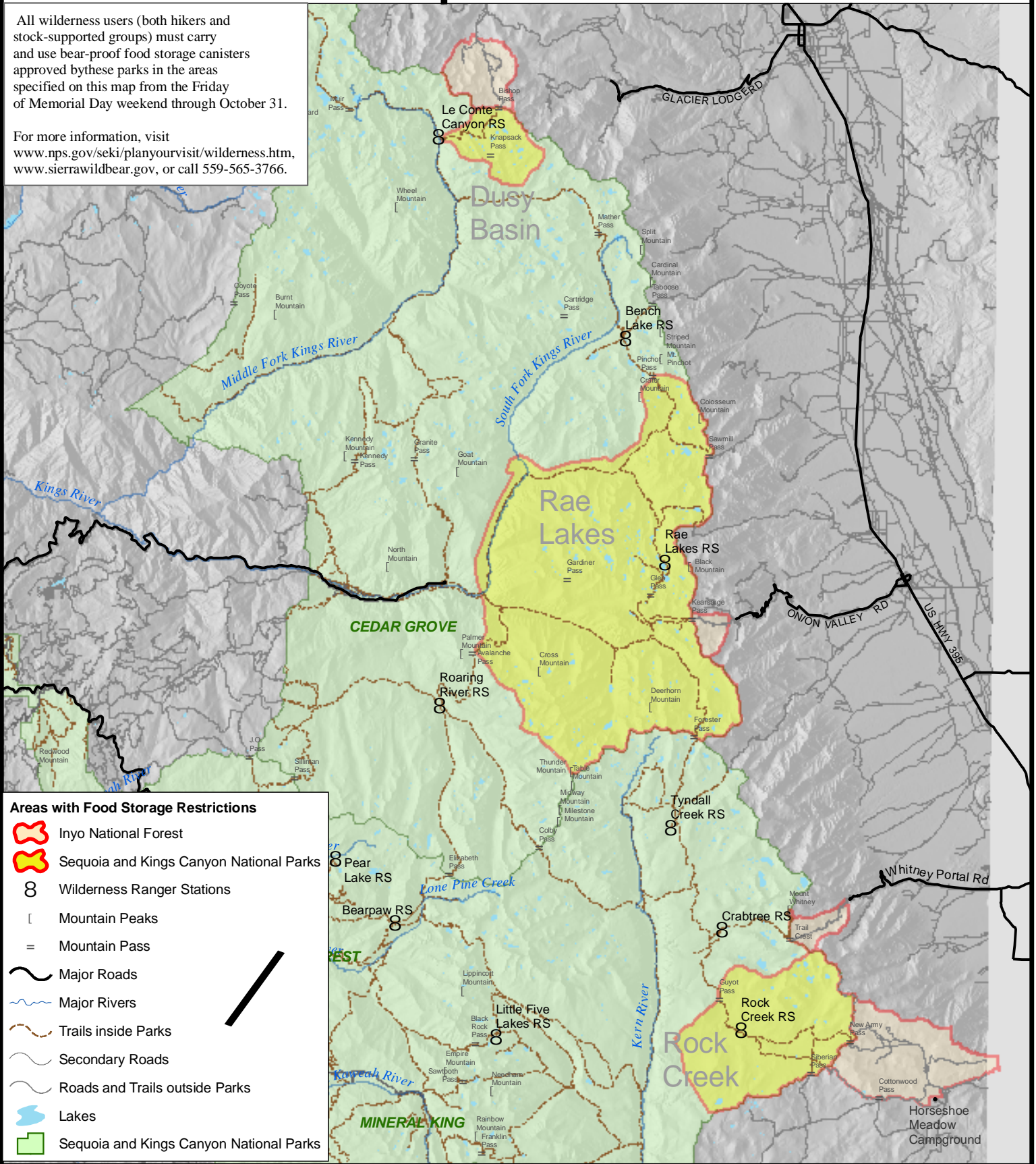




Canister Requirement Areas

All wilderness users (both hikers and stock-supported groups) must carry and use bear-proof food storage canisters approved by these parks in the areas specified on this map from the Friday of Memorial Day weekend through October 31.

For more information, visit www.nps.gov/seki/planyourvisit/wilderness.htm, www.sierrawildbear.gov, or call 559-565-3766.



Areas with Food Storage Restrictions

- Inyo National Forest
- Sequoia and Kings Canyon National Parks
- Wilderness Ranger Stations
- Mountain Peaks
- Mountain Pass
- Major Roads
- Major Rivers
- Trails inside Parks
- Secondary Roads
- Roads and Trails outside Parks
- Lakes
- Sequoia and Kings Canyon National Parks

