



PREVENT

The ODA and USDA animal health regulatory programs closely monitor and regulate the movement of livestock across state lines.

Approximately 129,000 livestock and other animals enter Oregon each year. Viruses, bacteria and unusual ticks, maggots or parasites do not respect state borders and are capable of “hitching a ride” into Oregon on imported animals. *Therefore, you should enforce...*

BIOSECURITY on the farm or ranch to prevent disease in your herd.

- ❖ Observe your animals daily for signs of disease.
- ❖ Be aware of events and unusual behaviors of people near your animals.
- ❖ Minimize your animals’ contact with other producers’ animals.
- ❖ Know the health status and disease control programs of any herd from which you buy animals.
- ❖ Be aware that visitors can bring disease to your herd. Only essential visitors should come in contact with your animals. Provide protective boots, gloves, and disinfectant for their use.
- ❖ Use feed and medicine from known and trusted sources.

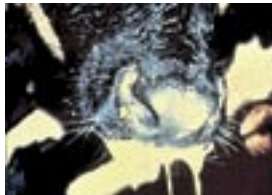


RECOGNIZE



Courtesy of Gordon Cleveland

SUDDEN UNEXPLAINED DEATH, HIGH FEVERS, OR ABORTIONS.



Courtesy of USDA, APHIS

BLISTERS OR SORES IN THE MOUTH OR ON THE TONGUE, NOSE, TEATS, AND FEET; SLOBBERING AND LAMENESS.



Courtesy of USDA, APHIS

STAGGERING, FALLING, CIRCLING OR OTHER BRAIN-DISORDER TYPE BEHAVIORS.



Courtesy of USDA, APHIS

UNUSUAL TICKS, MAGGOTS, OR PARASITES.



Courtesy of USDA, APHIS



REPORT

If you recognize signs of a possible emergency animal disease, report them immediately!



CALL YOUR VETERINARIAN!



RESPOND

YOU, the animal owner, are the first line of defense against emergency animal disease. Immediate response is crucial. The first 24 hours are the most important in stopping the spread of a disease.

IN CASE OF AN EMERGENCY ANIMAL DISEASE

- ❖ Move livestock to the center of the property, out of contact with other animals.
- ❖ Isolate animals showing illness.
- ❖ Stop visitors from entering your property.
- ❖ Stay on your property. Don't expose others.
- ❖ Wash and disinfect clothes, footwear, and equipment that comes in contact with animals.
- ❖ Use the phone—don't visit friends with livestock.
- ❖ Cooperate with the Emergency Animal Disease Eradication Program.

IS OREGON READY?

Is Oregon ready for a livestock foreign animal disease or pest outbreak?

YES! WITH YOUR HELP.

The Oregon Department of Agriculture, Oregon State University Veterinary Diagnostic Laboratory, and the US Department of Agriculture are preparing, in advance, to prevent or respond to the introduction of an emergency animal disease or the invasion of a dangerous tick or pest.

YOUR help is needed to protect Oregon from an emergency animal disease outbreak. As a livestock producer, livestock market owner, or feedlot operator, YOU are the front line defense for spotting and reporting possible signs of disease! You are a very important component in Oregon's Emergency Disease Surveillance Program.

THE KEYS TO PROTECTING OREGON'S LIVESTOCK INDUSTRY

-  **Prevent**
-  **Recognize**
-  **Report**
-  **Respond**

WHAT'S AT STAKE?

The health and well-being of Oregon's livestock and state's economy are at stake!

IN 2004

- ❖ Livestock production totaled over \$949 million.
- ❖ Oregon's #2 commodity was cattle and calves which generated \$503 million.
- ❖ The dairy industry produced over \$363 million in milk sales.
- ❖ Horses and mules bring in over \$26 million.
- ❖ The poultry industry generated over \$47 million in egg sales.
- ❖ The sheep industry generated \$10 million.

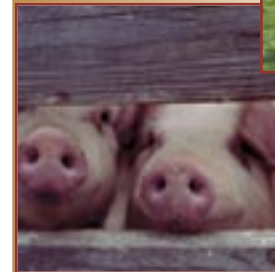
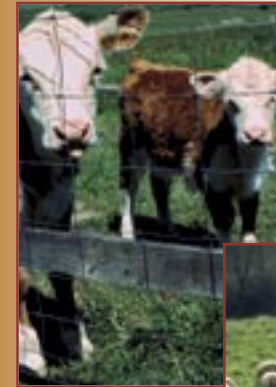
Disease outbreaks could bring the Oregon livestock industry to a halt. Other states and countries would restrict livestock movement and millions of dollars could be lost overnight.

Prevention or elimination of emergency animal disease outbreaks requires a unified effort between the Oregon Department of Agriculture, US Department of Agriculture, industry professionals, and allied livestock industries.

EVERYONE PLAYS A ROLE IN PROTECTING OREGON LIVESTOCK HEALTH!

In compliance with the Americans with Disabilities Act, this publication will be made available in alternate formats upon request. • TTY: 503-986-4762

PROTECTING OREGON'S LIVESTOCK



ODA STATE VETERINARIAN
503-986-4680

USDA AREA VETERINARIAN IN CHARGE
503-399-5871



Oregon
Department of Agriculture

Web: oregon.gov/ODA/AHID

DEC 2005