



US Army Corps
of Engineers
Jacksonville District

DRAFT REPORT RELEASED



Number 2

C&SF RESTUDY UPDATE

October 1998

A much anticipated report outlining plans to protect the greater Everglades ecosystem and south Florida's regional water supplies was released October 15. The nine-volume draft report recommends a Comprehensive Plan which includes projects extending from the Kissimmee River Basin to Florida Bay. Specific projects will be designed and constructed over the next 15 to 20 years.

The effort centers on an update of the region's water management system known as the Central & Southern Florida (C&SF) Project. This network of more than 1,000 miles of canals, 720 miles of levees, and several hundred water control structures and pump stations has provided water supply, flood control, and other water management benefits to our region for 50 years. The C&SF Project has allowed south Florida to become one of the fastest growing areas in the nation, and has enabled extensive agricultural development. But this has come at a price to the natural environment, causing unintended negative consequences to the greater Everglades ecosystem. It is time to update the project to serve the region for the next 50 years.

In 1992, Congress authorized the U.S. Army Corps of Engineers — which built the project — to look at the existing project and the problems and opportunities associated with it. These were described in a reconnaissance report released in 1994.

Then, beginning in 1995, the Corps of Engineers and the C&SF Project's local sponsor — the South Florida Water Management District — began a detailed feasibility study outlining specifics to update the water management infrastructure. The report, released October 15, was developed with input from more than 30 agencies and professional disciplines, and extensive public participation. It is a work-in-progress and is not cast in stone. Public comment will be sought at 12 public meetings in November and early December, and there will be many other opportunities for input throughout the process.

Plan Takes Systemwide Approach

The Comprehensive Plan will benefit almost everyone living in south Florida, whether through continued flood protection, increased water supplies, or the many rewards associated with environmental protection. It is the only plan that takes a systemwide look at the southern Florida region. No other plan is this comprehensive, with so many different, connected elements. The draft Feasibility Study and integrated Programmatic Environmental Impact Statement is 500 pages. The appendices total more than 3,000 pages. It is also available on the Internet at www.restudy.org.

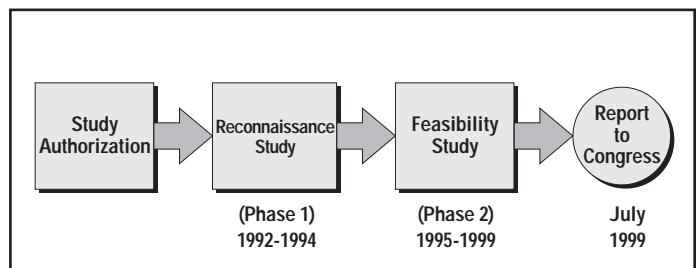
Reports Are Available to Public

Despite its breadth, every effort is being made to share the report with the public. Copies of the nine-volume report have been delivered to county libraries for each of Florida's 16 counties in the study area. A separate 30-page overview provides a summary of the plan and its objectives. Copies of the overview are available by contacting the South Florida Water Management District Office of Government and Public Affairs, Post Office Box 24680, West Palm Beach, Florida, 33416-4680, or call tollfree in Florida 1-877-RESTUDY.

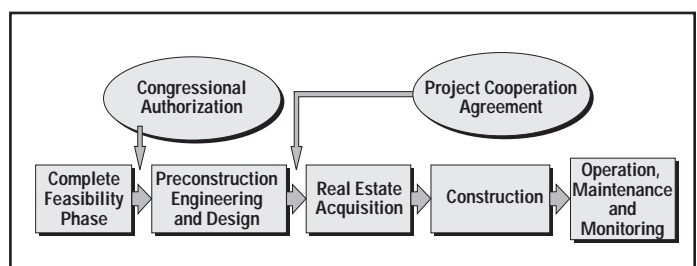
What's the Next Step?

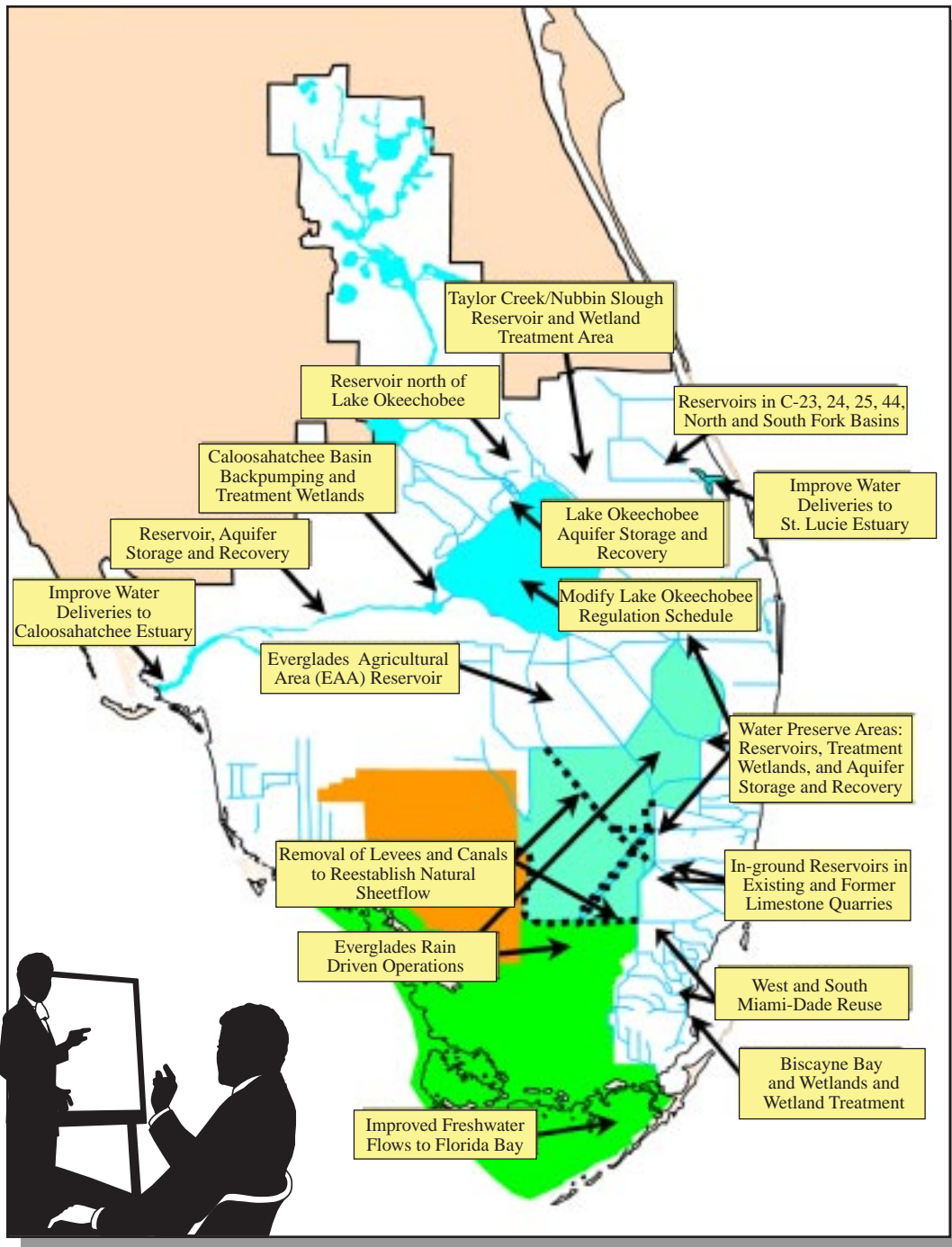
The Corps of Engineers and South Florida Water Management District are jointly holding public meetings in November and early December to take comments on the plan and draft report. The public comment period will conclude December 31. In April, the Corps of Engineers will release the final plan. On July 1, 1999, the Corps — with the support of the District as local sponsor — will transmit the plan to Congress for authorization. Preliminary estimates are that it will cost \$7.8 billion, with \$175 million needed each year for maintenance, operation and monitoring. The cost will be shared equally between the federal government and citizens of Florida, and will be funded over many years.

Two Phase Study Process



Implementation Process





Comprehensive Plan Components

Restudy Increases Water Storage, Provides Many Other Regional Benefits

The single most important element of the Comprehensive Plan is water storage. The plan proposes capturing most of the 1.7 billion gallons of excess water a day that is wastefully discharged to the Ocean or Gulf. This water will be retained in above-ground reservoirs, or injected more than 1,000 feet underground for retrieval later.

Other plan components include changing Lake Okeechobee's regulation schedule to benefit its ecology, improving water deliveries to the estuaries, developing manmade wetlands to cleanse water, sending water to the Everglades in a more natural fashion, removing manmade barriers to overland sheetflow in the Everglades, re-using wastewater, and sending more fresh water to Florida Bay.

MEETINGS PROVIDE OPPORTUNITY FOR INPUT/COMMENT

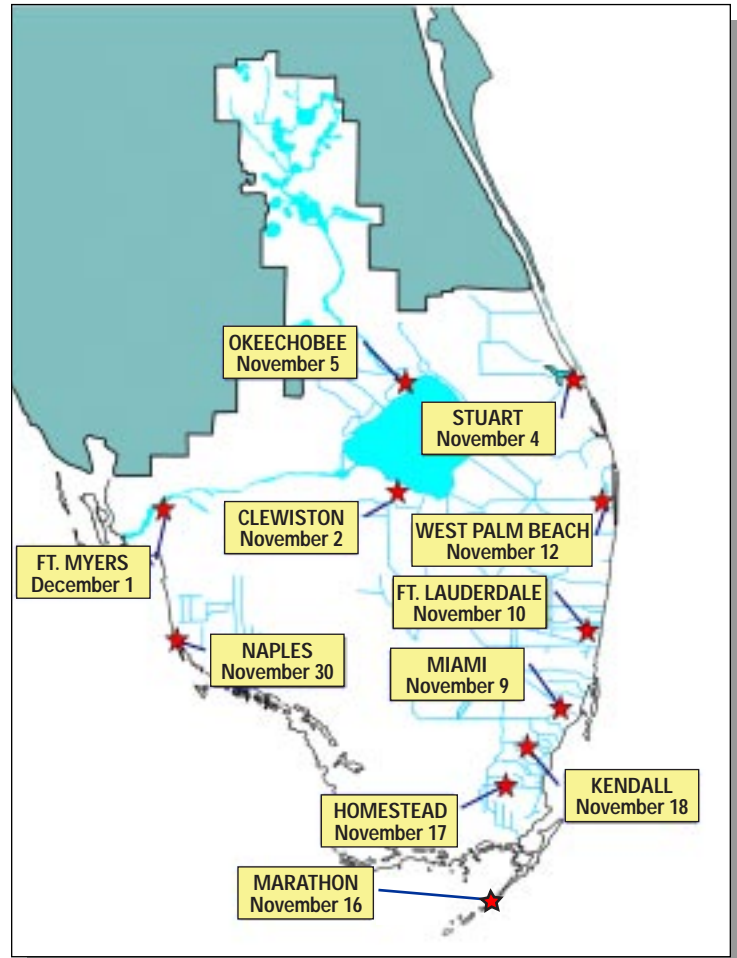
Twelve meetings are planned in south Florida cities and Washington, D.C. from Nov. 2 to Dec. 8 to take comments on the draft report. Most are being held at high schools to provide a convenient, community-oriented location. The public is encouraged to attend to learn about the Restudy and comment on the Comprehensive Plan and the draft report.

Open House from 5 p.m. to 7 p.m.

An open house will be held from 5 p.m. to 7 p.m. for visitors to see exhibits on the Restudy, and talk individually with Restudy Team members. The open house will offer an opportunity for the public to informally ask team members questions about the plan.

Public Meeting at 7 p.m.

The formal public meeting will begin at 7 p.m. to take comments on the plan. A short presentation will be made on the study's findings, then comments will be taken from the public. Elected officials will have the opportunity to speak first. Following that, random drawing will determine the order of speakers. Some materials also will be available in Spanish. Col. Joe Miller, the Jacksonville district engineer for the Corps of Engineers, and Sam Poole, executive director for the South Florida Water Management District, will attend the meetings.



Public meetings are held throughout south Florida in November and early December.



PUBLIC MEETINGS

<u>Date</u>	<u>City</u>	<u>Location</u>	<u>Date</u>	<u>City</u>	<u>Location</u>
11/02/98	Clewiston	John Boy Auditorium South W. C. Owen Avenue	11/16/98	Marathon	Marathon High School 350 Sombrero Beach Road (East at MM 50)
11/04/98	Stuart	Martin County High School 2801 S. Kanner Highway	11/17/98	Homestead	Homestead Sr. High School 2351 SE 12th Avenue
11/05/98	Okeechobee	Okeechobee High School 2800 Highway 441 North	11/18/98	Kendall	Miami Sunset Sr. High School 13125 SW 72nd Street
11/09/98	Miami (North)	Miami-Dade Community College (North Campus) 11380 NW 27th Avenue	11/30/98	Naples	Naples High School 1100 Golden Eagle Circle
11/10/98	Fort Lauderdale	South Plantation High School 1300 SW 54th Avenue	12/01/98	Fort Myers	Fort Myers High School 2635 Cortez Boulevard
11/12/98	West Palm Beach	Palm Beach Lakes High School 3505 Shiloh Drive	12/08/98	Washington, D.C.	National Guard Association of the United States 1 Massachusetts Avenue N.W. Washington, D.C. 20001

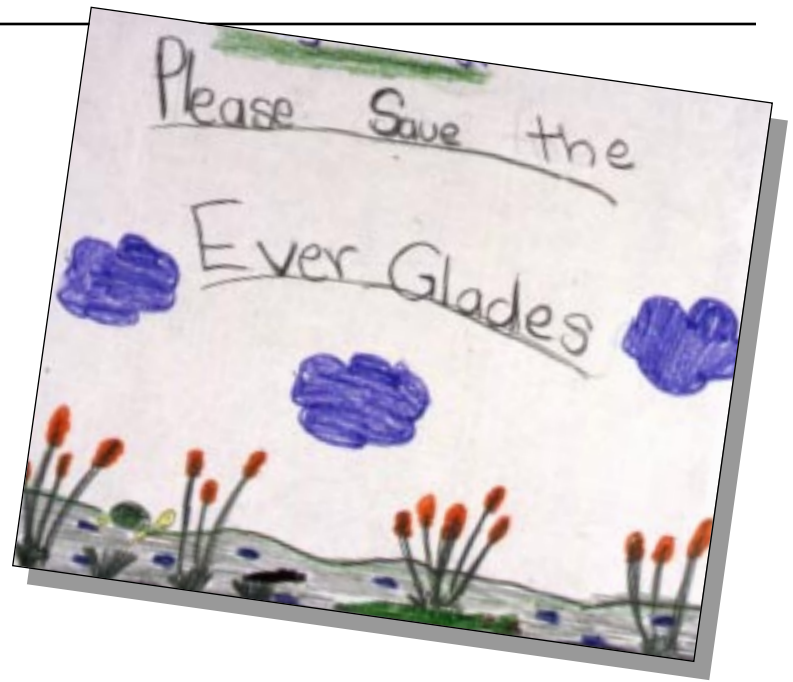


ENVIRONMENTAL EDUCATION PILOT PROGRAM LAUNCHED

The Corps of Engineers has launched a youth education pilot project in conjunction with the November meetings and release of the draft plan.

An important objective of the public meetings is to obtain broad-based understanding and participation from the local community. In an effort to accomplish wide-ranging outreach to the community, and communicate with as many people as possible, a program involving school age children began in October.

The Corps, working with an experienced water resource education specialist, has contacted some 2,000 elementary, middle and high school teachers who have completed District-sponsored water resource education training to participate in the program. Elementary teachers are being asked to promote a schoolwide poster contest, with winning posters to be exhibited at the public meetings. Posters will encourage children to draw "their vision" of the state when they grow up. Middle or high school teachers will create one or more lesson plans for use in schools where meetings are being held. A discussion of public participation and civic or governmental processes will be incorporated into the lesson plan.



Teachers who attended "water workshops" sponsored by the District received materials in the mail about the program. Each participating teacher is asked to return an evaluation form to the Corps. The pilot program then will be assessed next year for possible refinements. Other educators interested in obtaining copies of the material can call the Water Management District at (561) 687-6001.

Have questions about the
Restudy? Call us at:
1-877-RESTUDY



South Florida
Water Management District
MSC 0400
P.O. Box 24680
West Palm Beach, FL 33416-4680