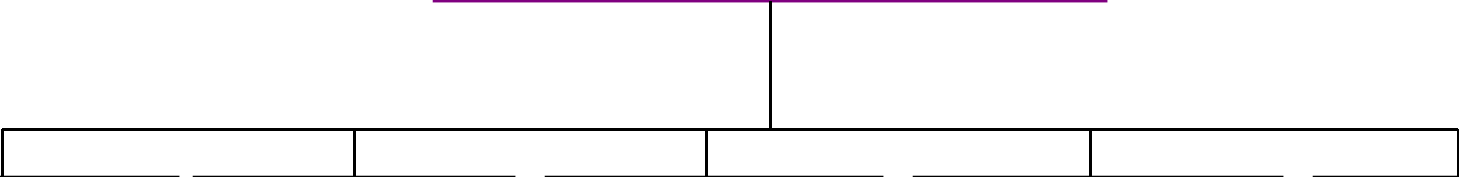


USDA Office of Security Services Organizational Chart

W.R. Ashworth, Director
Mary Bale, Deputy Director
(202)720-0272



Continuity of Operations Planning
Leslie Pozanek, Chief
(202) 690-3493

Emergency Programs
Jim Redington, Director
(202)690-3191

Personnel & Document Security
Susan Gulbranson, Chief
(202)720-7373

Physical Security
Richard Holman, Chief
(202)720-3901

Protective Operations
Ken Lescallett, Director
(202)720-6270