

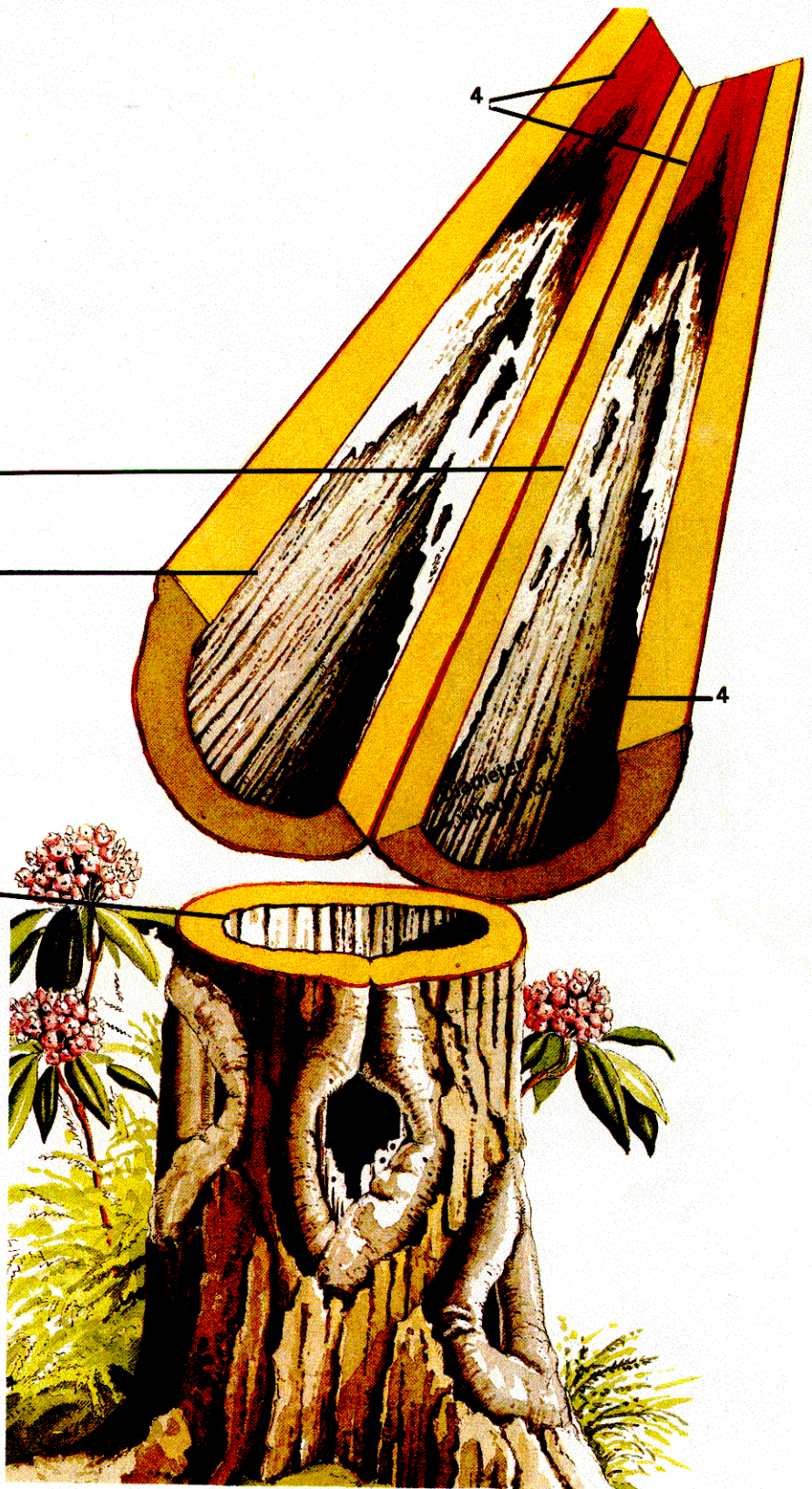
Three severe basal wounds.  
All inner compartment walls have  
fallen and only the barrier zone  
remains. This is how hollows  
develop.

Barrier zone Wall 4

4

4

4



A basal wound of moderate severity. The entire "group of trees" present at the time of wounding was altered slightly, and were confined by the barrier zone. The side walls, or rays, held here and the column was wedge-shaped in cross-section. The jagged vertical edge was due to variation in confining ability of compartment tops and bottoms in different growth rings.

