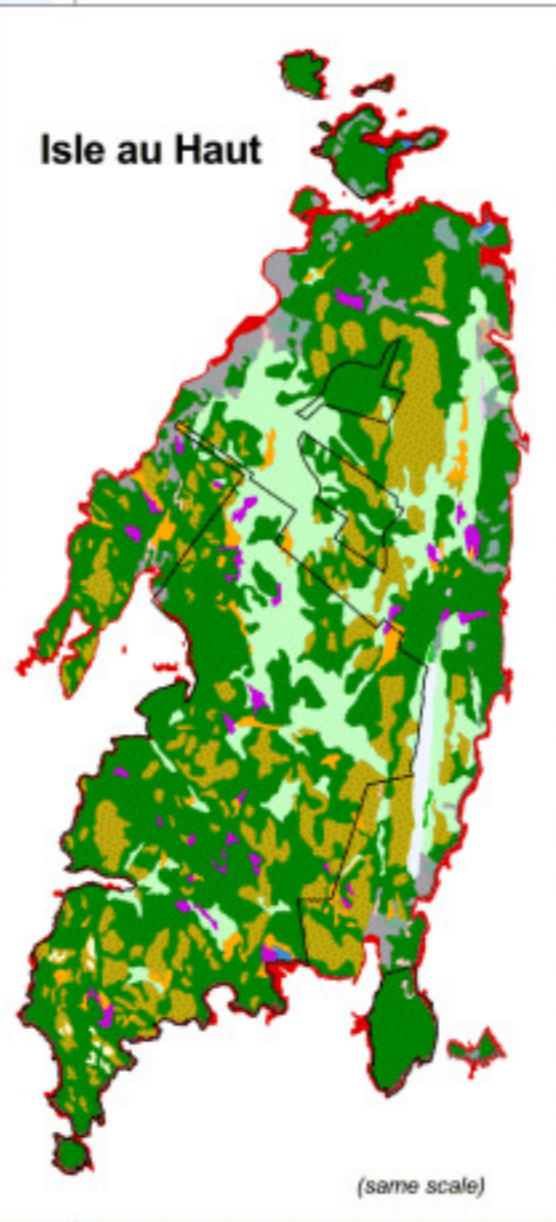
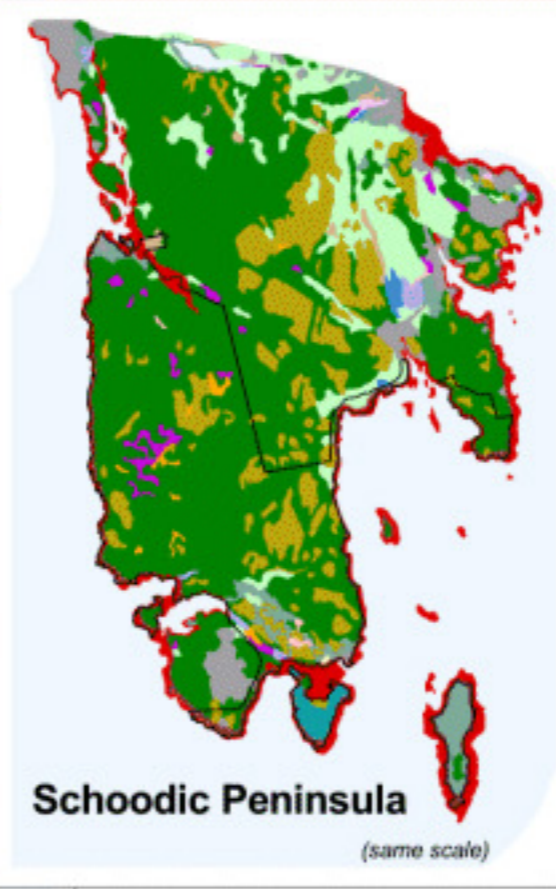
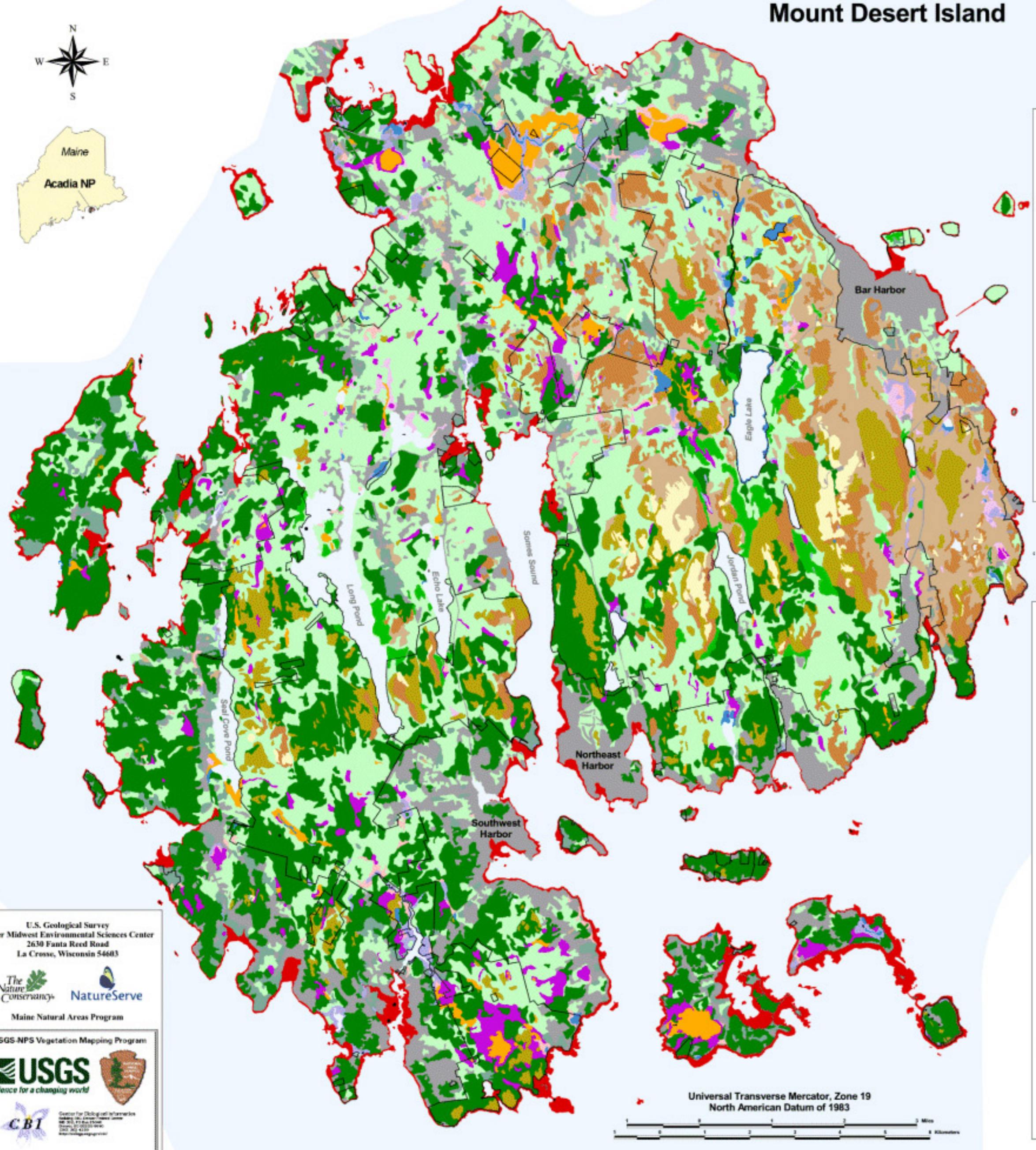
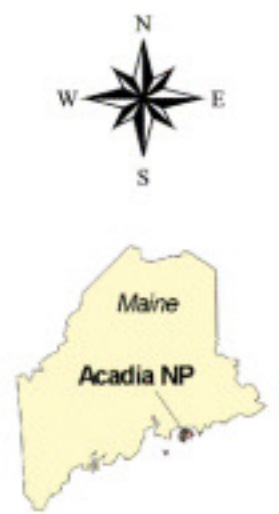


# Mount Desert Island

# Vegetation of Acadia National Park



The spatial database used to create this map was prepared by the USGS Upper Midwest Environmental Sciences Center for the USGS-NPS Vegetation Mapping Program, which is managed by the USGS Center for Biological Informatics.

NatureServe, Maine Natural Areas Program, and The Nature Conservancy provided vegetation field sampling, analysis, and classification development based on the National Vegetation Classification System (NVCS).

The spatial database was produced by the stereo interpretation of spring 1997 color infrared aerial photographs (1:15,840-scale). Prior to delineating polygons, field reconnaissance was performed to learn photographic appearances of vegetation types and to link map classes to vegetation communities. The interpreted data were transferred to base maps plotted from USGS 3.75-minute digital orthophoto quadrangles. The referenced data were digitized using the ArcScan tool in ArcInfo. Standard minimum mapping unit is 0.5 hectares.

The Vegetation Map Classes represent NVCS vegetation associations or groups of associations. For display purposes, the Vegetation Map Classes are organized by physiognomic - hydrologic groups. The Other Map Classes are combined into general categories. The spatial database offers finer details for each map class (e.g. relationship to vegetation communities, physiognomic features of vegetation, crosswalk to other classification systems).

The spatial database reflects conditions that existed at the time of aerial photography collection. A margin of error is inherent with interpreting aerial photographs. Based on results of a thematic accuracy assessment, the estimated overall accuracy for Vegetation Map Classes is 80%. Those using the database should determine for themselves the fitness of the data prior to use.

The spatial database, along with supporting information, is located on the internet at <http://biology.usgs.gov/npsveg>.

## Acadia NP Boundary

### Vegetation Map Classes by Physiognomic - Hydrologic Groups

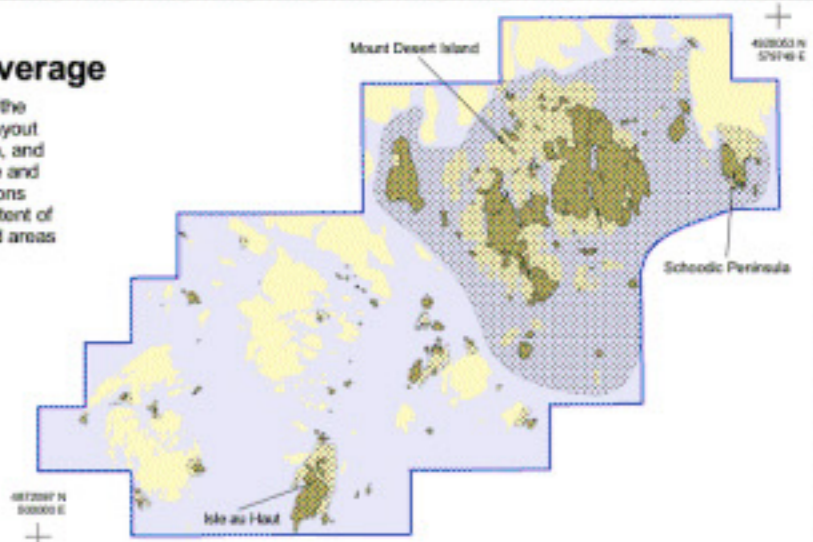
- **Forest - Conifer - Upland**  
Spruce - Fir Forest (conifer phase)  
White Pine - Mixed Conifer Forest  
Red Pine - White Pine Forest
- **Forest - Deciduous - Upland**  
Beech - Birch - Maple Forest
- **Forest - Mixed - Upland**  
Oak - Pine Forest  
Spruce - Fir Forest (mixed phase)  
White Pine - Hardwood Forest
- **Woodland - Conifer - Upland**  
Mixed Conifer Woodland  
White Cedar Woodland  
Jack Pine Woodland  
Pitch Pine - Heath Barren  
Pitch Pine - Corema Woodland  
Pitch Pine Woodland
- **Woodland - Deciduous - Upland**  
Aspen Birch Woodland/Forest Complex (forest phase)  
Aspen Birch Woodland/Forest Complex (woodland phase)  
Aspen Birch Woodland/Forest Complex (shrubland phase)  
Red Oak Woodland
- **Woodland - Mixed - Upland**  
Mixed Conifer - Deciduous Woodland
- **Forest - Deciduous - Wetland**  
Red Maple - Hardwood Swamp
- **Woodland - Conifer - Wetland**  
Conifer Swamp Woodland (spruce-mixed phase)  
Conifer Swamp Woodland (white cedar phase)
- **Dwarf Shrubland - Evergreen - Upland**  
Crowberry - Bayberry Headland
- **Dwarf Shrubland - Deciduous - Upland**  
Blueberry Bald - Summit Shrubland Complex
- **Graminoid - Upland**  
Dune Grassland
- **Sparse Vascular - Upland**  
Open Headland - Beach Strand  
Sparsely Vegetated Talus
- **Shrubland - Deciduous - Wetland**  
Alder Shrubland  
Sweetgale Mixed Shrub Fen
- **Dwarf Shrubland - Evergreen - Wetland**  
Dwarf Shrub Bog  
Fen Complex
- **Graminoid - Wetland**  
Tidal Marsh  
Graminoid Shallow Marsh
- **Forb - Wetland**  
Open Water - Deep Marsh Complex
- **Tidal Zone**  
Tidal Algal Zone  
Tidal Beach  
Tidal Mud Flat
- **Small Island with Vegetation\***  
Small Island with Trees  
Small Island with Shrubs  
Small Island with Grass  
Small Island with Rock
- **Cultural Vegetation**  
Evergreen Plantation  
Mixed Deciduous Shrubland  
Mixed Grass - Forb  
Perennial Grass Crops  
Perennial Grass Crops with Sparse Shrubs
- **Non-vegetated Water**  
Beaver Pond (non-vegetated)  
Natural Pond (non-vegetated)  
Stream (non-vegetated)  
Lake (non-vegetated)  
Ocean, Bay, and Estuary (non-vegetated)
- **Land Use**  
Residential  
Commercial and Services  
Transportation and Roads  
Mixed Urban or Built-up Land  
Other Urban or Built-up Land  
Other Agricultural Land  
Strip Mines, Quarries, and Gravel Pits

\* Small Island 0.1 > 0.5 hectares

### Full Extent of Map Coverage

The extent of map data goes well beyond the three main park lands presented on this layout (Mount Desert Island, Schoodic Peninsula, and Isle au Haut). All Acadia National Park fee and easement lands along with selected environs are provided in the map coverage. The extent of the map coverage is shown by the shaded areas in the graphic to the right.

- Map Data Extent Boundary
- Map Data
- National Park Lands
- Land
- Water



U.S. Geological Survey  
Upper Midwest Environmental Sciences Center  
2630 Fanta Reed Road  
La Crosse, Wisconsin 54603

The Nature Conservancy NatureServe  
Maine Natural Areas Program

USGS-NPS Vegetation Mapping Program

**USGS**  
science for a changing world

**CBI**  
Center for Biological Informatics

Composition Date: October 2003

