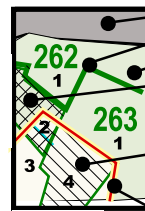


King County, Washington

Low / Moderate Household Income
by Census Blockgroup

Map Features



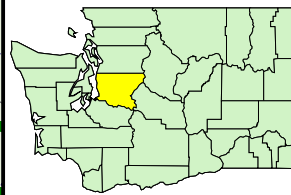
- Non-participating Cities
- Census tract boundary
- Unincorporated Area
- Double cross-hatch indicates Low / Moderate Income Households >69.9% of Total Households by Census Blockgroup
- Single cross-hatch indicates Low / Moderate Income Households from 45.2% to 69.9% of Total Households by Census Blockgroup
- Incorporation Boundary

* Census area boundaries often do not align with incorporated area boundaries

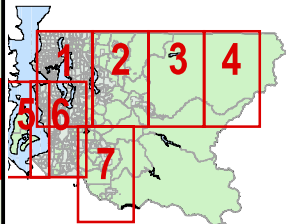


Date: 1/08/05
File: lmkc8x14_2.apr
Map 2 of 7 in set

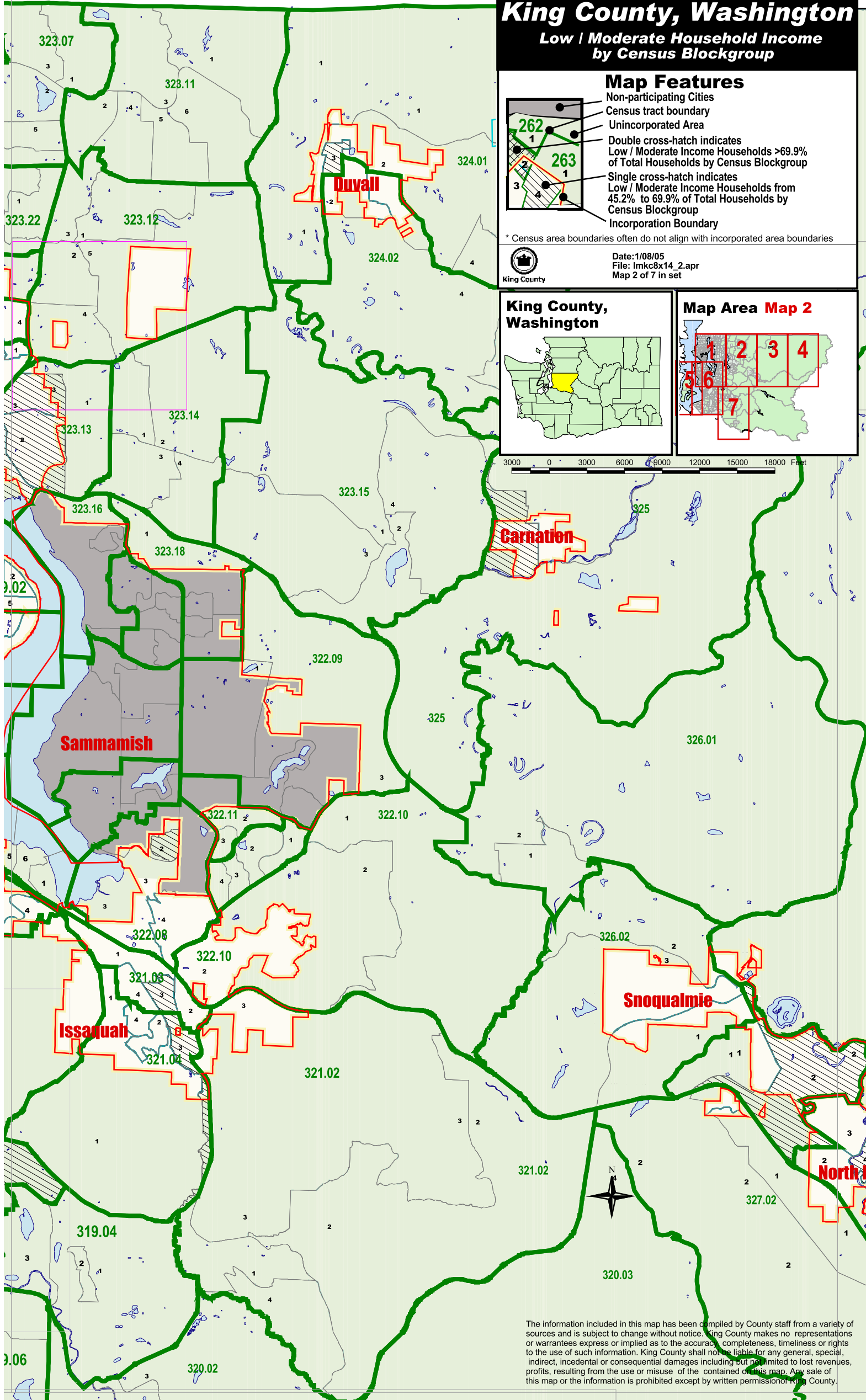
King County, Washington



Map Area Map 2



3000 0 3000 6000 9000 12000 15000 18000 Feet



The information included in this map has been compiled by County staff from a variety of sources and is subject to change without notice. King County makes no representations or warranties express or implied as to the accuracy, completeness, timeliness or rights to the use of such information. King County shall not be liable for any general, special, indirect, incidental or consequential damages including but not limited to lost revenues, profits, resulting from the use or misuse of the contained information on this map. Any sale of this map or the information is prohibited except by written permission of King County.