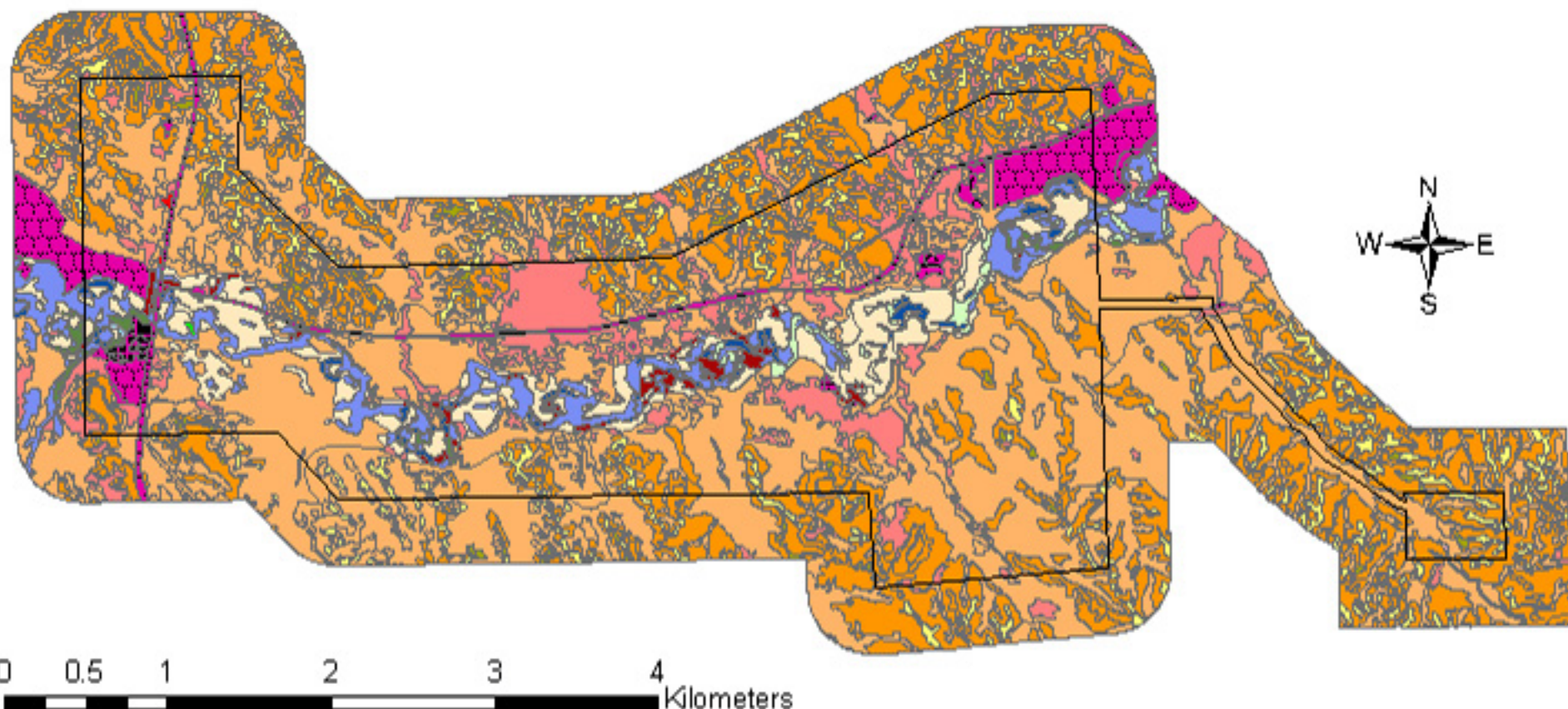


# Agate Fossil Beds National Monument Vegetation / Land Use



## VEGETATION COMMUNITY

	Cottonwood - (Peach Leaved Willow) / Sandbar Willow Woodland
	Western Snowberry Shrubland
	Narrow-Leaf Willow Shrubland
	Western Wheatgrass Mixedgrass Prairie
	Prairie Sandreed - Sand Bluestem Prairie
	Needle-And-Thread - Blue Grama Mixedgrass Prairie
	Needle-And-Thread - Blue Grama Mixedgrass Prairie / Northern Great Plains Little Bluestem Prairie Mosaic
	Northern Great Plains Little Bluestem Prairie
	Needle-and-thread Grass - Blue Grama Gravel Herbaceous Vegetation
	Upland Disturbance Herbaceous Vegetation
	Seeded Grassland Herbaceous Vegetation
	Annual-dominated Floodplain Disturbance Herbaceous Vegetation
	Baltic Rush Wet Meadow
	Broad-Leaved Cattail Marsh
	Water
	National Monument Boundary

## LANDUSE

	Agriculture
	Dam
	Ditch, Water, Maintained Area, Cut and Fill
	Exotic Tree Planting
	Mining (Borrow Pit)
	Paved Roads and Associated Disturbance, Cut and Fill Embankments (Highway 29 and River Road)
	Daemonelix Trail Parking Area
	Niobrara River Fishing Parking Area
	Visitor Center
	Visitor Picnic Parking Area and Driveway
	Ranger Residence Area
	Maintenance Yard
	Bone House
	Ranger Residence by Bone House
	Trees planted near Ranger Residence by Bone House
	Cook Homestead