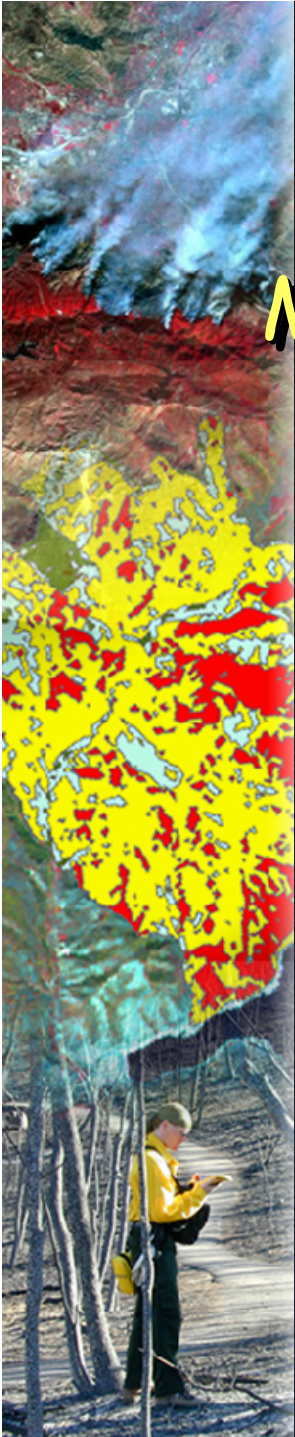


Map & Image Plots for BAER Team Use

Good and bad examples



Creating Map Plots for Field Use

- RSAC does not typically create map plots for BAER team field use
- To make a good map plot for field use, remember the following 'rules':
 - ◆ Show DRG (digital raster graphic) draped over a hillshade and the BARC data
 - ◆ ALWAYS explicitly state what you are showing on the map (Soil Burn Severity; vegetation mortality; BARC; watershed response, etc.)

Creating Map Plots for Field Use

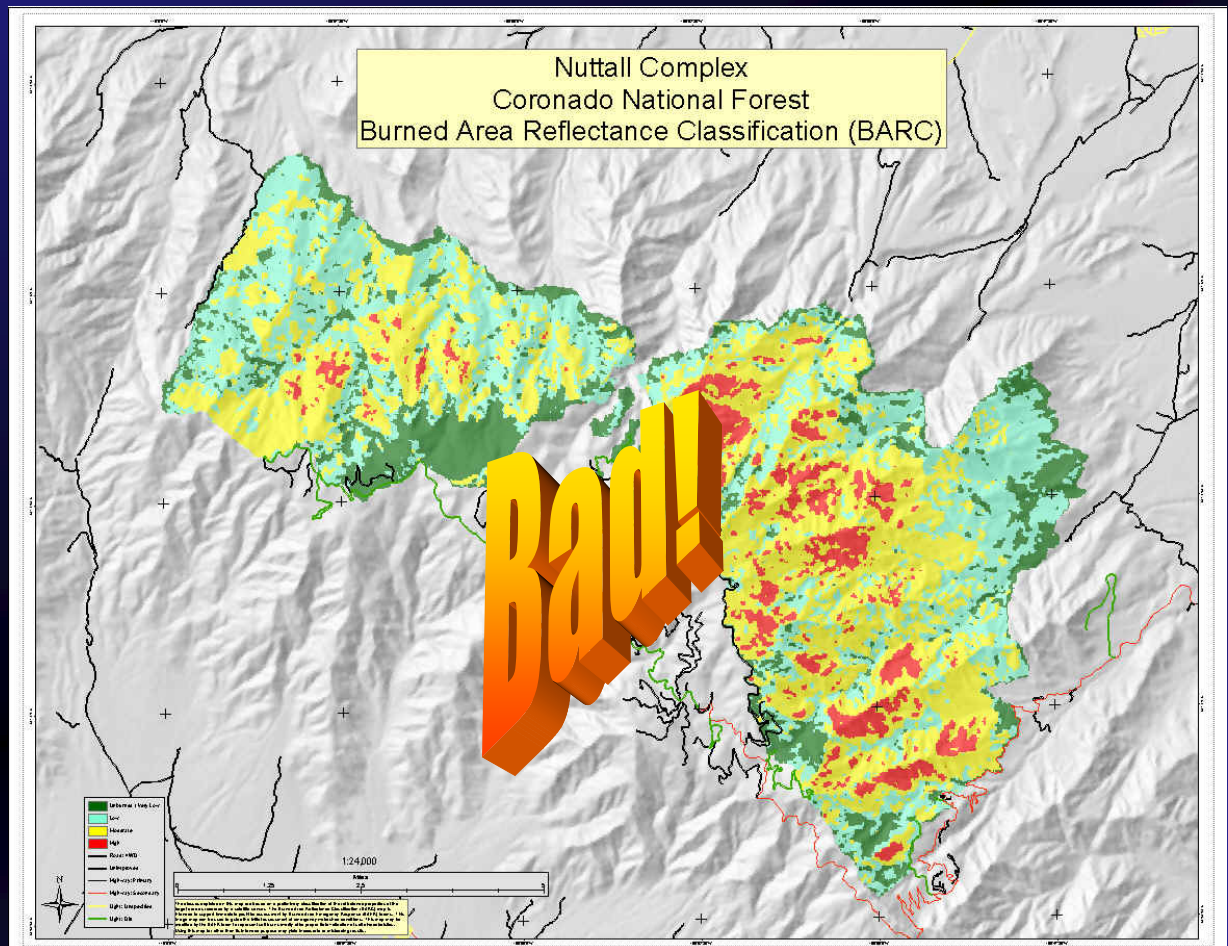
- To make a good map plot for field use, remember the following 2 'rules':
 - ◆ 1. Assume someone besides a BAER team member will see the map
 - ◆ 2. Remember Rule #1
- All the others:
 - ◆ Include the word "BAER" on the poster
 - ◆ Include scale bars, north arrows, scale text, and disclaimers

Creating Map Plots for Field Use

- To make a good map plot for field use, remember the following 'rules':
 - ◆ Print the map at a scale appropriate to fire size and available data layers
 - Don't print a 1:24k DRG at 1:48k
 - You'll typically need to print a 1:24k DRG at high quality to sufficiently see the detail contained in the raster image
 - ◆ Plot size can vary from 11" x 17" to ANSI E (34" x 44"), depending on need
 - ◆ Make the BARC data semi-transparent when draped over a hillshade
 - ◆ Grids and graticules are very useful for field visits

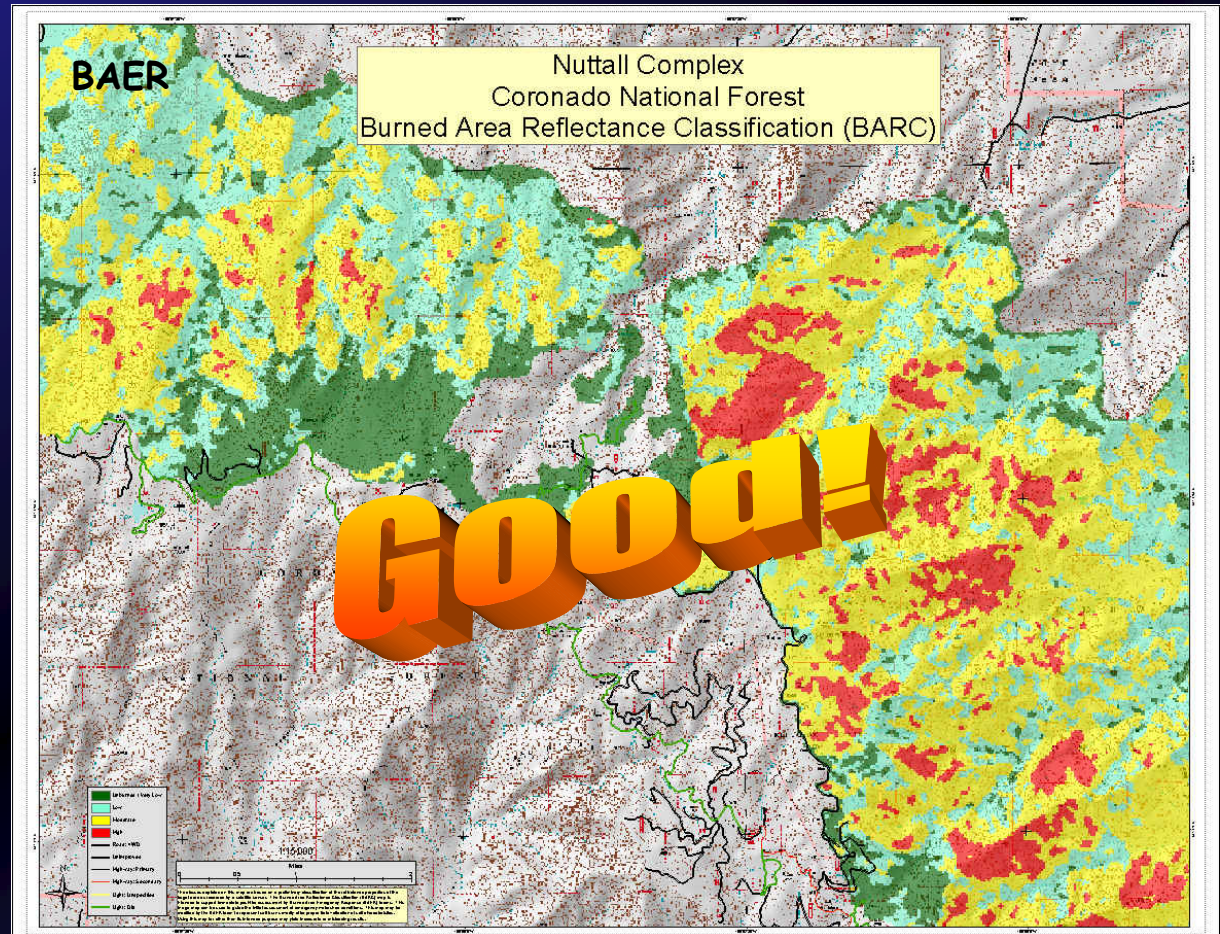
Map Plot Examples

- Roads not labeled
- No locator diagram
- Not identified as a BAER Map



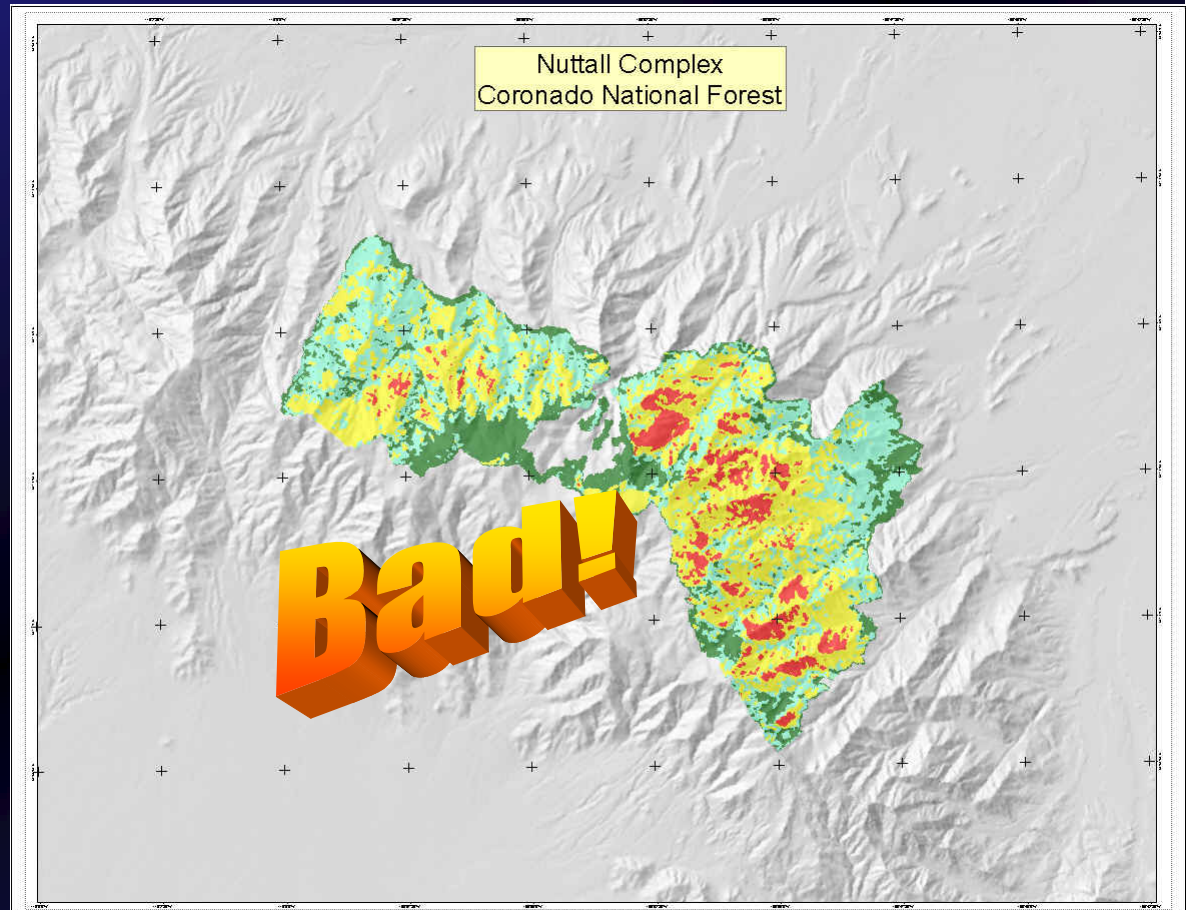
Map Plot Examples

- Includes a DRG—road labels & locator diagram
- Identified as a BAER Map



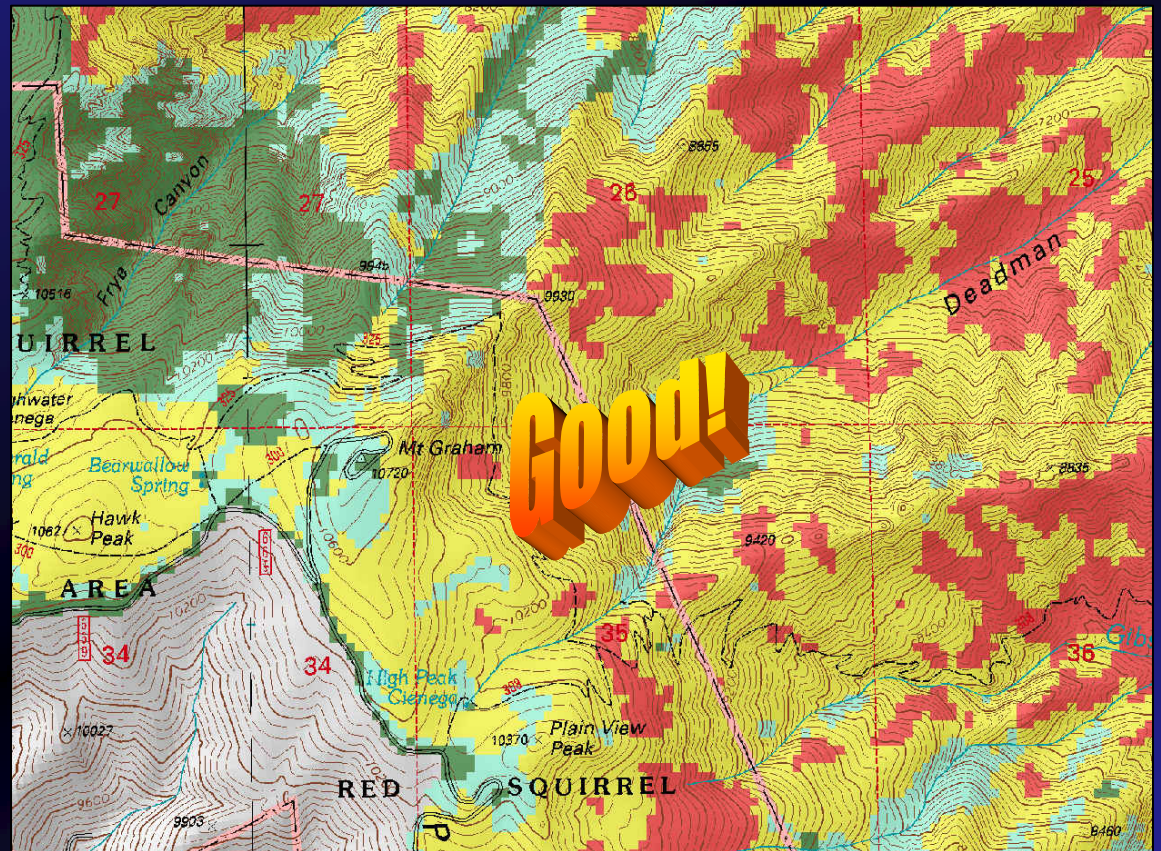
Map Plot Examples

- No legend
- No scale bar
- Not properly identified as a BAER Map, or BARC layer



Map Plot Examples

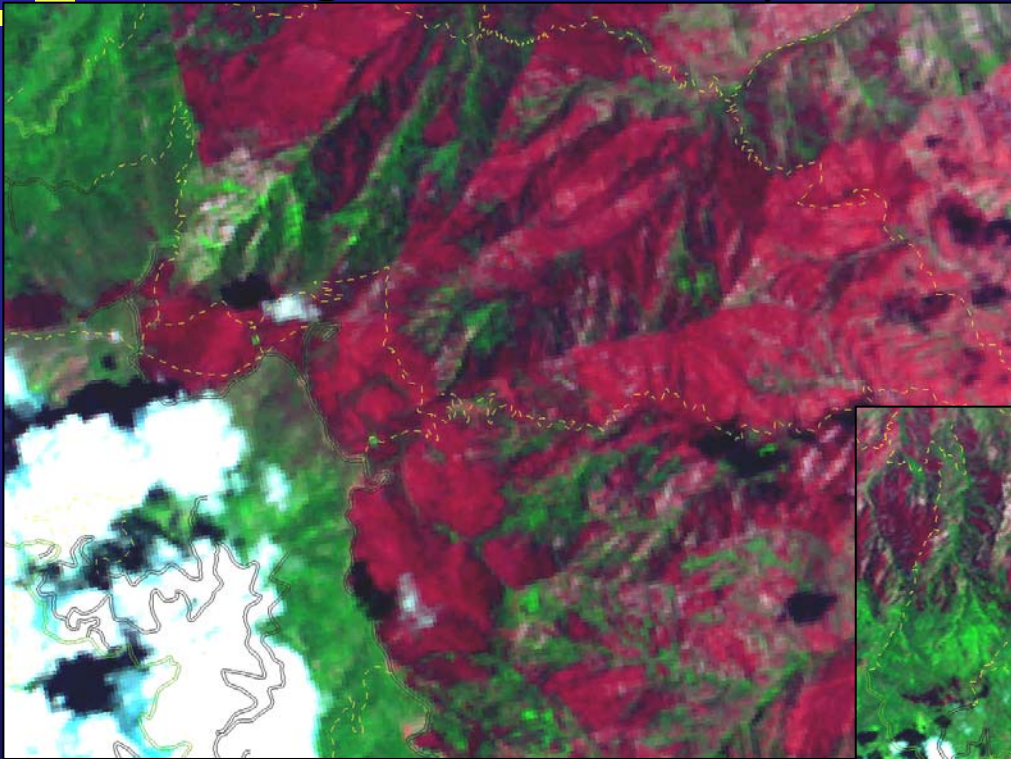
- Good example of DRG included with a properly made BAER Map—this is a subset of the map...



Creating Image Plots for Field Use

- It can also be useful to create a plot showing the post-fire satellite image
- The biggest thing to remember is scale, scale, scale
- Printing Landsat imagery at a large scale (such as 1:12k) may be inappropriate
- Other data layers may not display well with the imagery (DRGs get lost in the image)

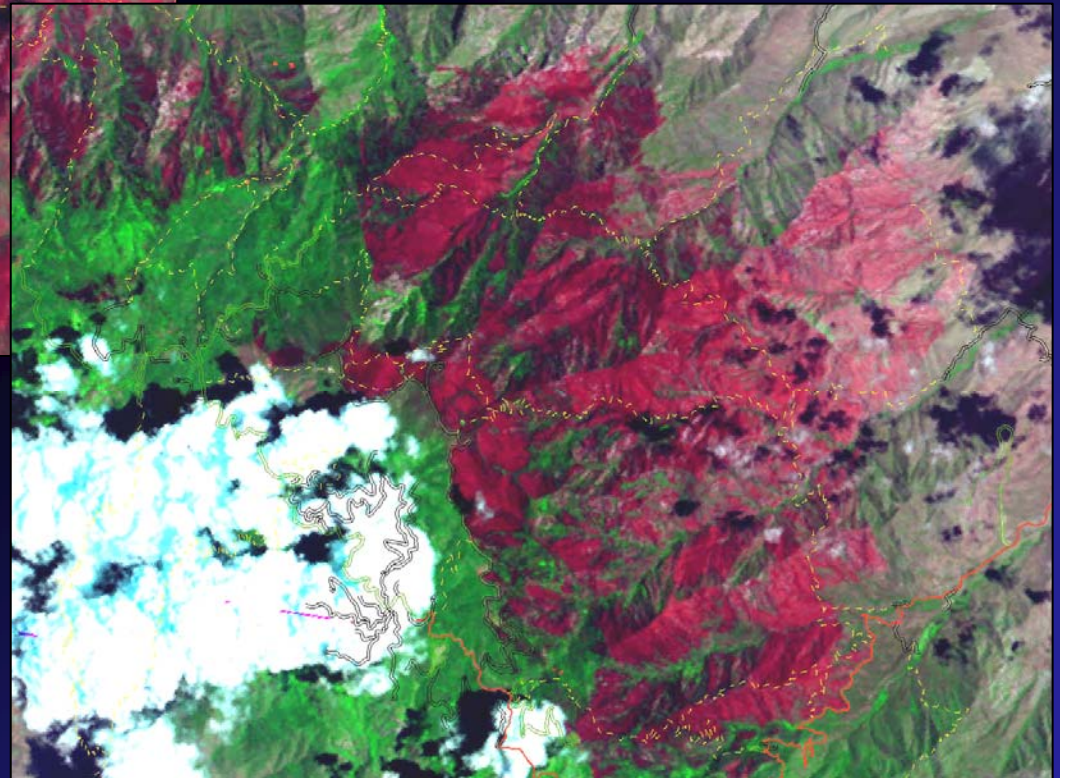
Image Plot Examples



Landsat 5 TM
imagery displayed
(RGB = 7,4,3) with
roads and trails

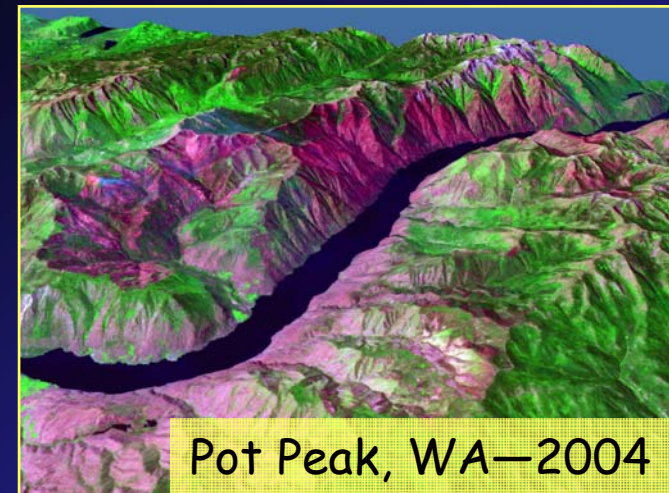
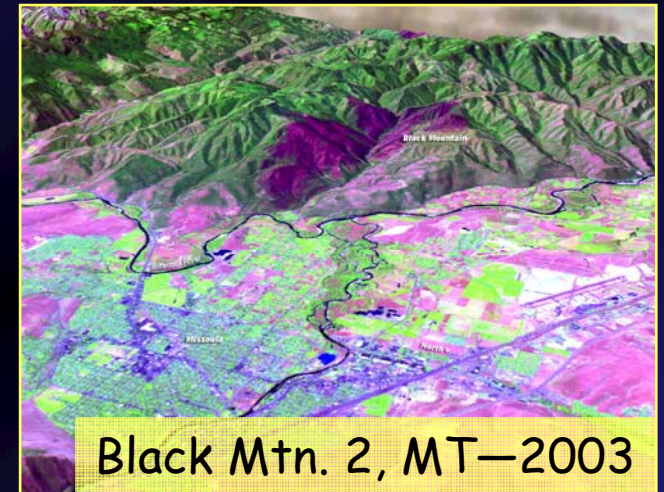
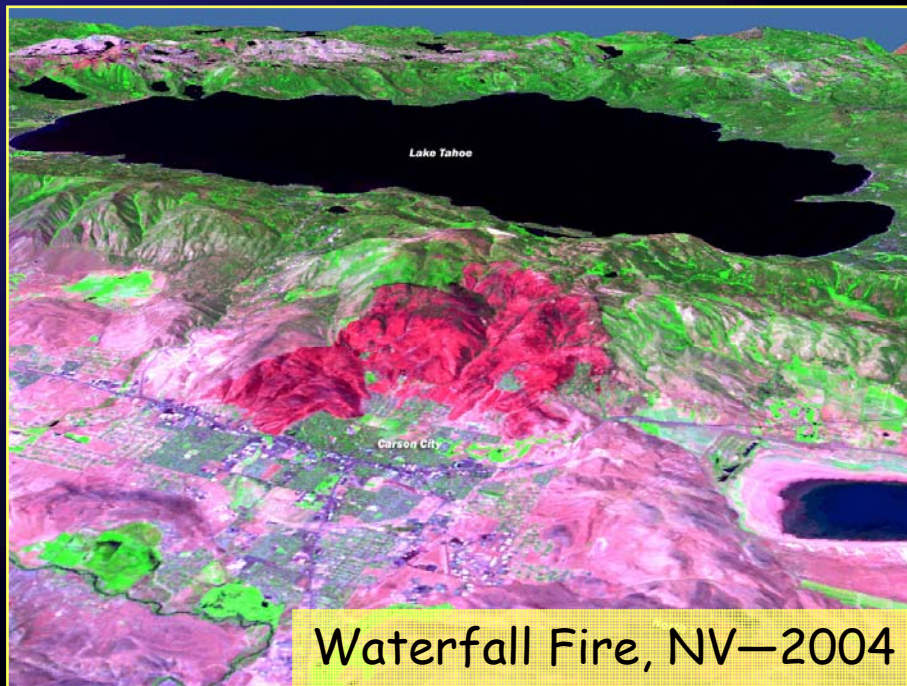
Good or Bad?

Depends on user's needs...



3D Visualizations

- Often used for public meetings, education, and awareness sessions...





The End