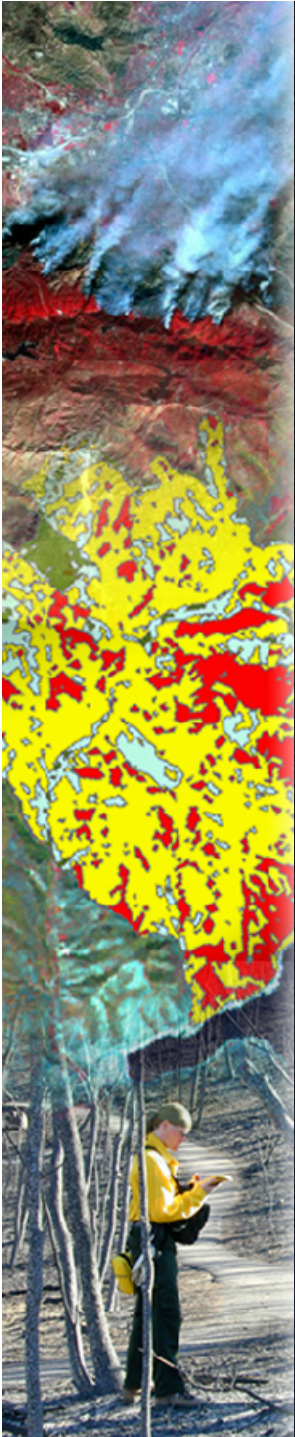


Using the BARC for BAER Support

Workshop Overview



Objectives of this workshop

1. Learn about RSAC's role in BAER Team support
2. Learn a little about remote sensing and image processing
3. Learn how RSAC makes the Burned Area Reflectance Classification (BARC)
4. Learn how to edit the BARC and perform some simple GIS analyses
5. Learn where to find help and additional resources

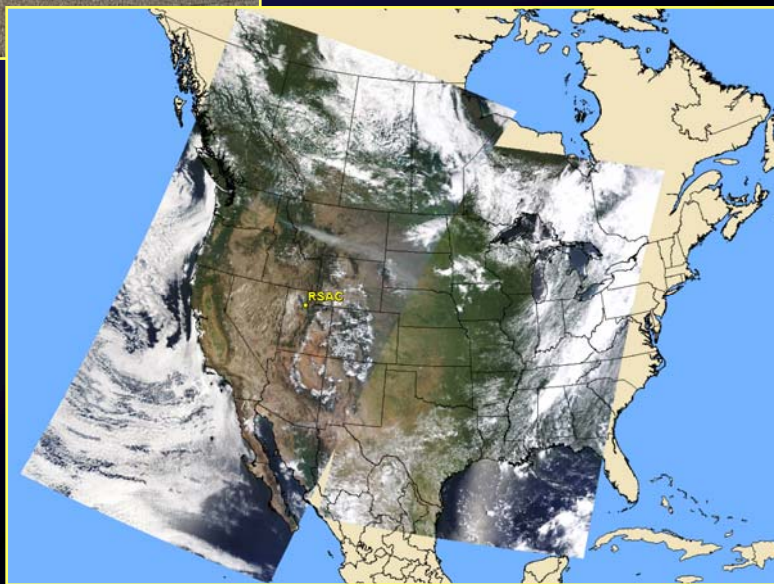
Topics

- RSAC and BAER Burn Severity Mapping Support
- Digital Remote Sensing and Sensor Properties
- Deriving the BARC from Satellite Imagery
- Systematic and Locational Editing of the BARC
- Using Imagery and the BARC
- Getting Help and Additional Resources

Workshop Format

- Lectures and discussions
- Demonstrations
- Computer-based exercises

RSAC and Fire Support



USDA FOREST SERVICE REMOTE SENSING APPLICATIONS CENTER Canadian Fire Maps

MODIS Active Fire Mapping Program

Search:

Regional Maps | ArcIMS Maps | Imagery | GIS Data | Fire Detections | Other Products

Fire locations are based on data provided by the National Interagency Fire Center and are subject to change.

Large Incidents - January 28, 2005

● Wildland Fire
● WFLU Fire

View Printable Map Definition of Map Terms Select a Fire Go

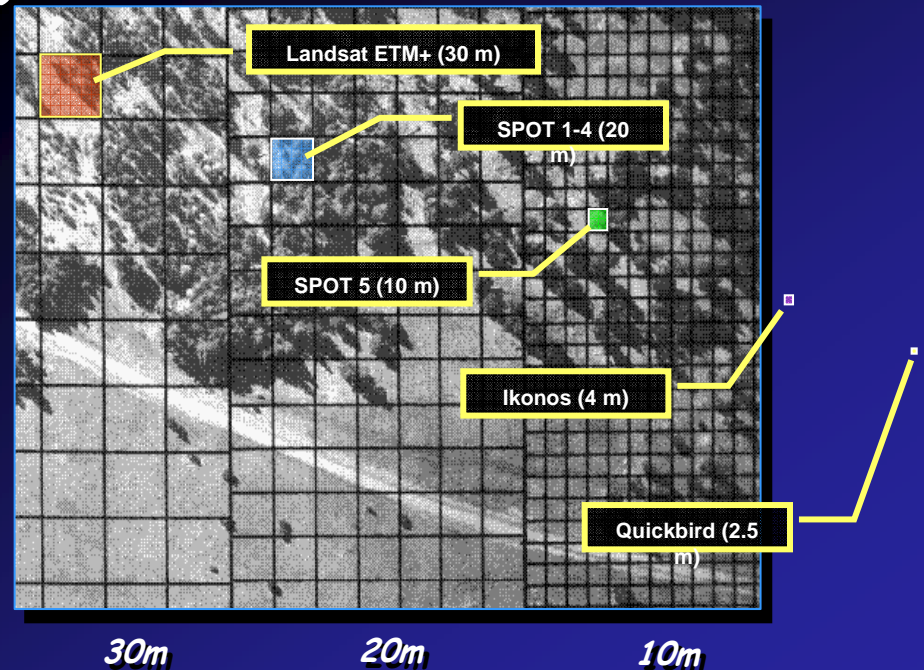
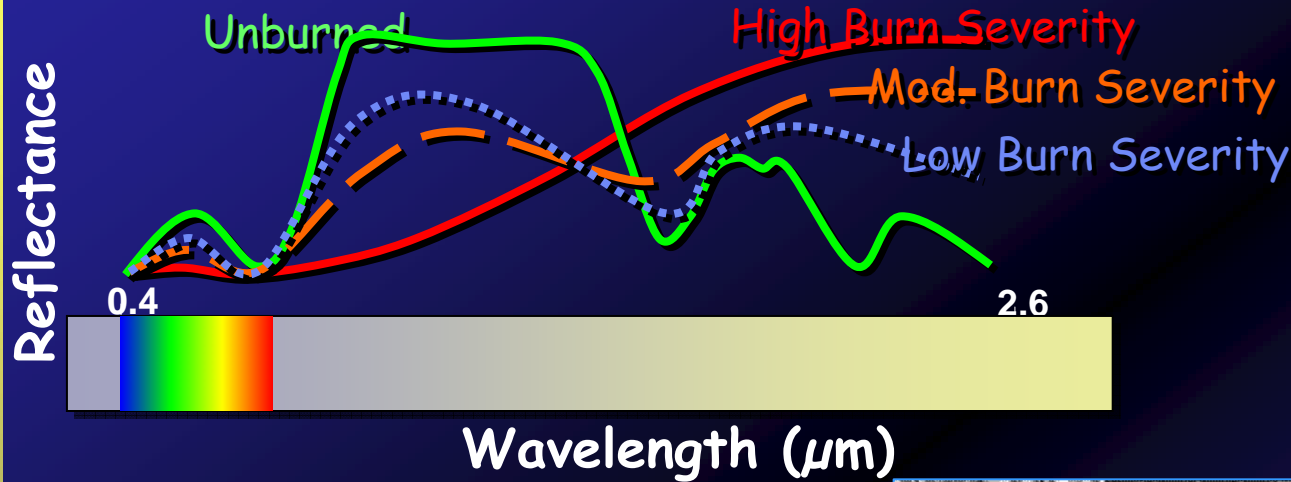
News

Posted November 2, 2004

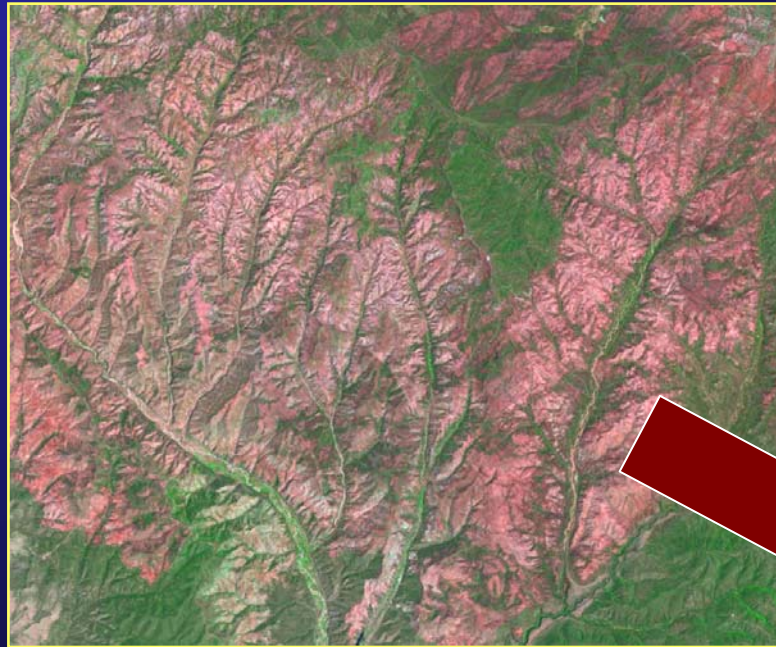
Please see the MODIS fire detection animation of the Alaskan wildfires compiled by the Remote Sensing Applications Center available under the [Customize](#) link. The animation displays the progression of fire activity in the Alaskan interior from June 10 to September 6, 2004.

These fire information products were compiled at the USDA Forest Service (USFS) Remote Sensing Applications Center in cooperation with NASA Goddard Space Flight Center, the University of Maryland, the National Interagency Fire Center, and the USFS Missoula Fire Sciences Lab.

Remote Sensing & Sensor Properties

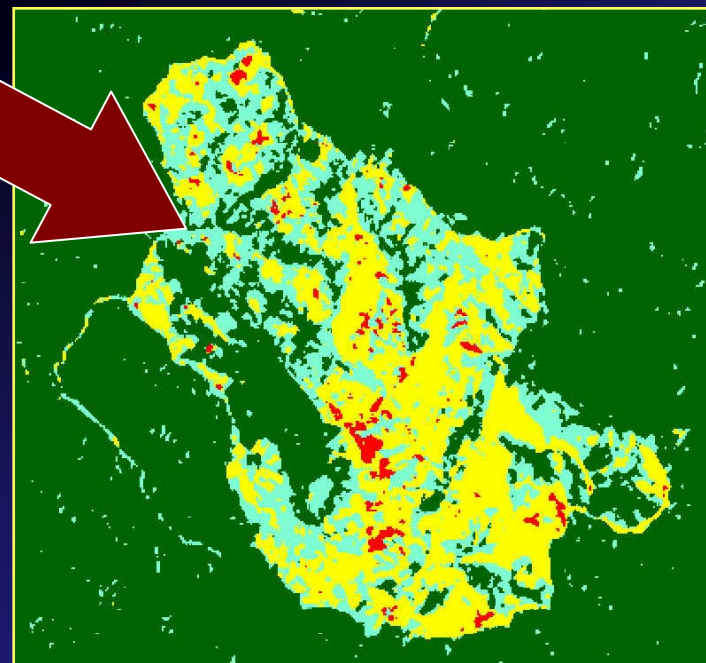


Deriving the BARC from Satellite Imagery



Rodeo – Chediski Fire 2002 Landsat 7
ETM+ Imagery

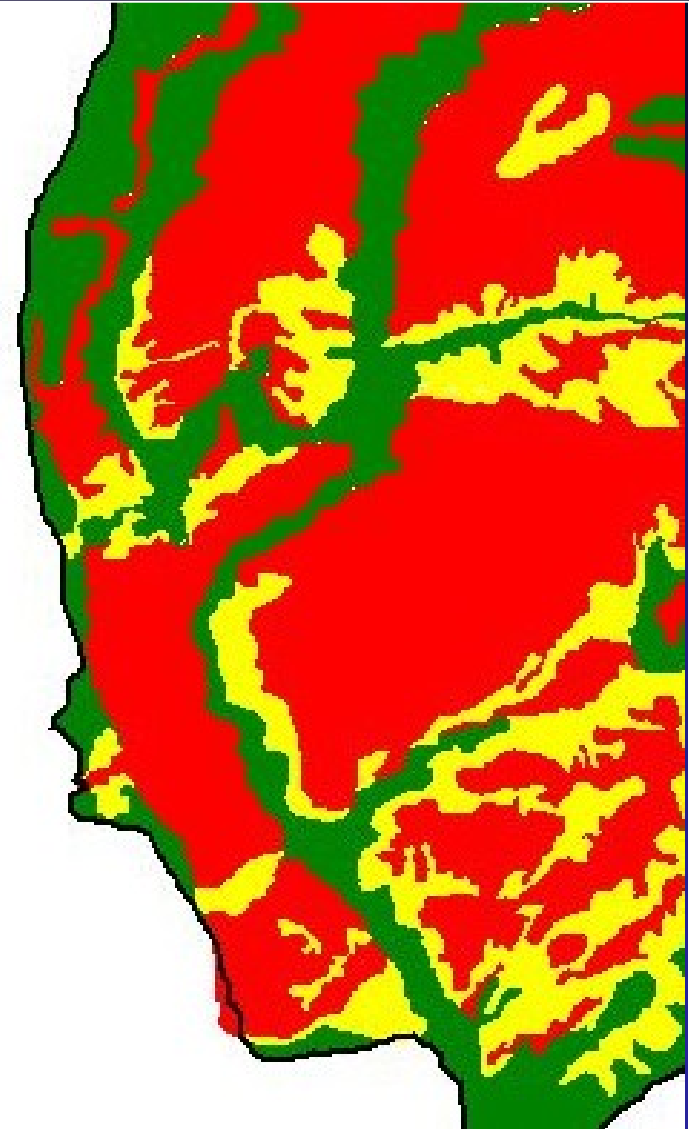
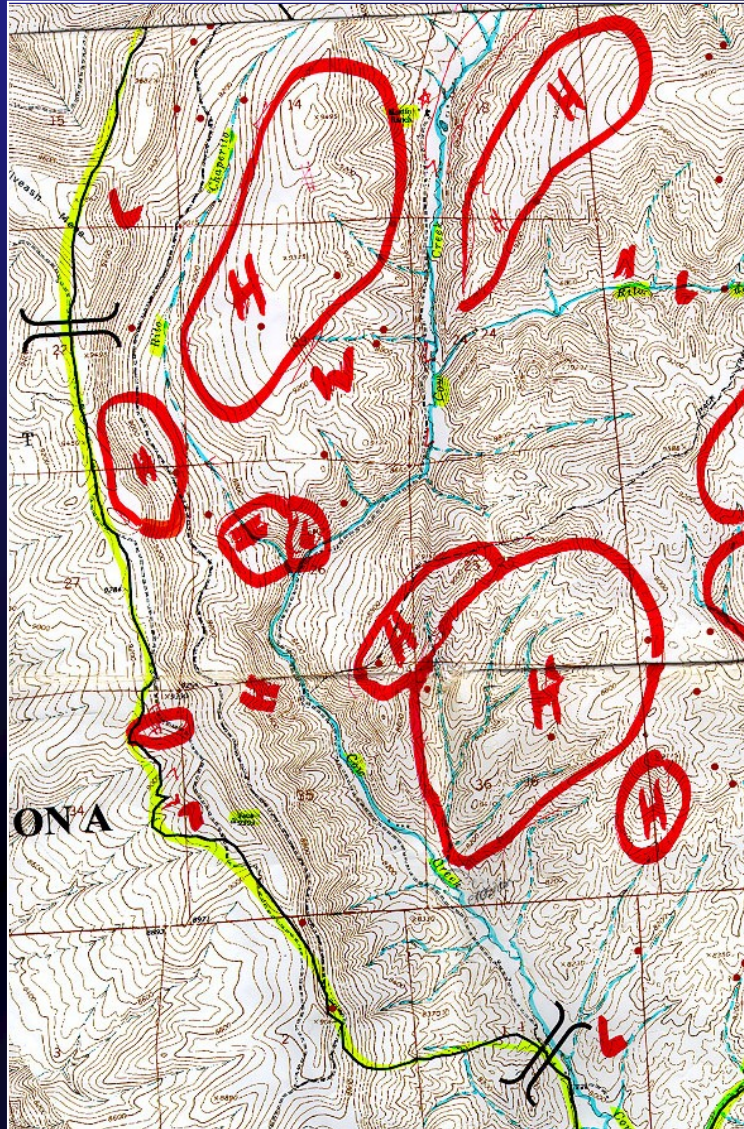
French Fire 2004 BARC Dataset



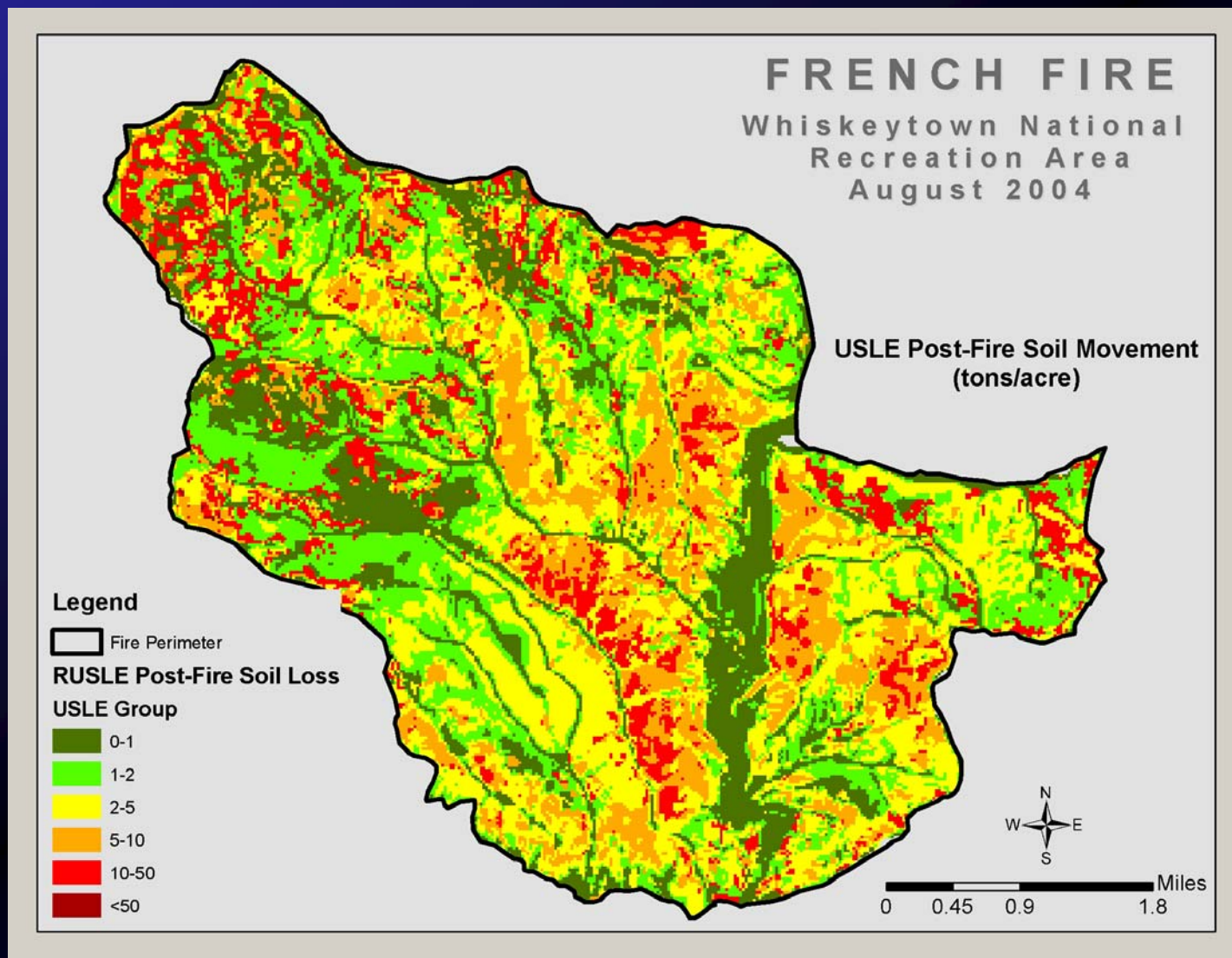
Editing the BARC for Burn Severity

Viveash Fire

Santa Fe NF
2000



Using Imagery & the BARC



Help & Additional Resources

The screenshot shows a Mozilla Firefox browser window displaying the USDA NRCS Geospatial Data Gateway website. The browser's address bar shows the URL <http://datagateway.nrcs.usda.gov/>. The website features a navigation menu with links for "Get Data", "Login", "Check Order", "Status Maps", "News", "FAQ", "About", "Contact", and "Administration". A central graphic depicts a globe with a satellite and a stack of data layers, with the text "the one stop source of natural resources data" and "Geospatial Data Gateway". Logos for APFO and the USDA National Resources Conservation Service National Cartography & Geospatial Center are visible. A "Minimum Requirements" section specifies: "Microsoft Internet Explorer 5.5 or Netscape Communicator 4.76 with Java enabled." A "NOTICE" at the bottom states: "You are entering an Official United States Government System, which may be used only for authorized purposes. Unauthorized modification of any information stored on this system may result in criminal prosecution. The Government may monitor and audit usage of this system, and all persons are hereby notified that use of this system constitutes consent to such monitoring and auditing." The browser's status bar at the bottom shows the URL <http://datagateway.nrcs.usda.gov/NextPage.asp>.

Schedule

- We'll start each morning at 9am MDT
 - ◆ Lectures followed by exercises
 - ◆ Schedule will be discussed in detail right now...
 - Challenges of a webcast format
 - Breaks & lunch
 - Closeout for each day

OUR MUGS



Tony Guay

RS Specialist, GIS Analyst, Instructor

tguay@fs.fed.us

801-975-3763



Jess Clark

RS Specialist, GIS Analyst

jtclark@fs.fed.us

801-975-3769



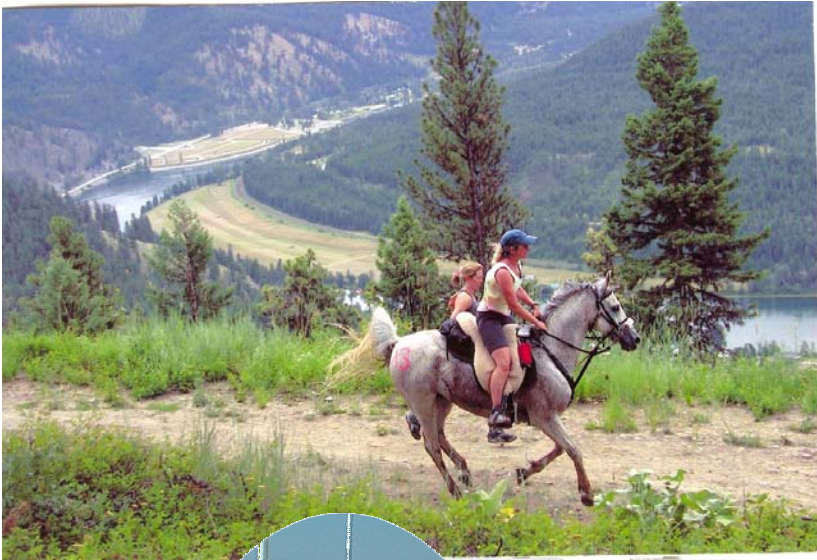
Annette Parsons

GIS/RS Specialist--BAER Liaison

aparsons@fs.fed.us

541-618-2341







Introductions from class participants

Please tell us:

1. Your name
2. Your job title
3. Your home office / duty station
4. Your favorite hobby
5. Any previous experience with the BARC?

Questions?
Comments?