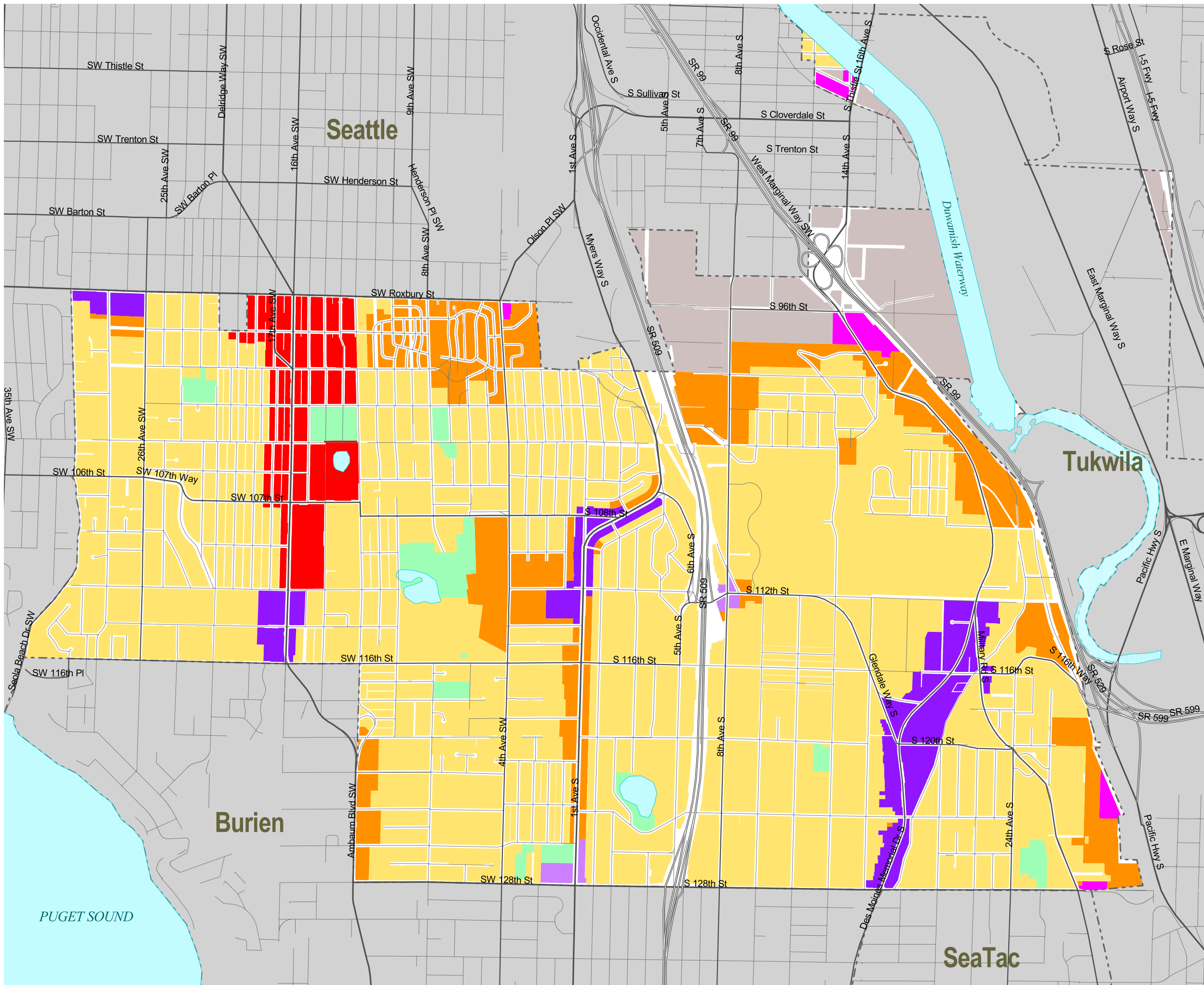


North Highline Comprehensive Plan Land Use

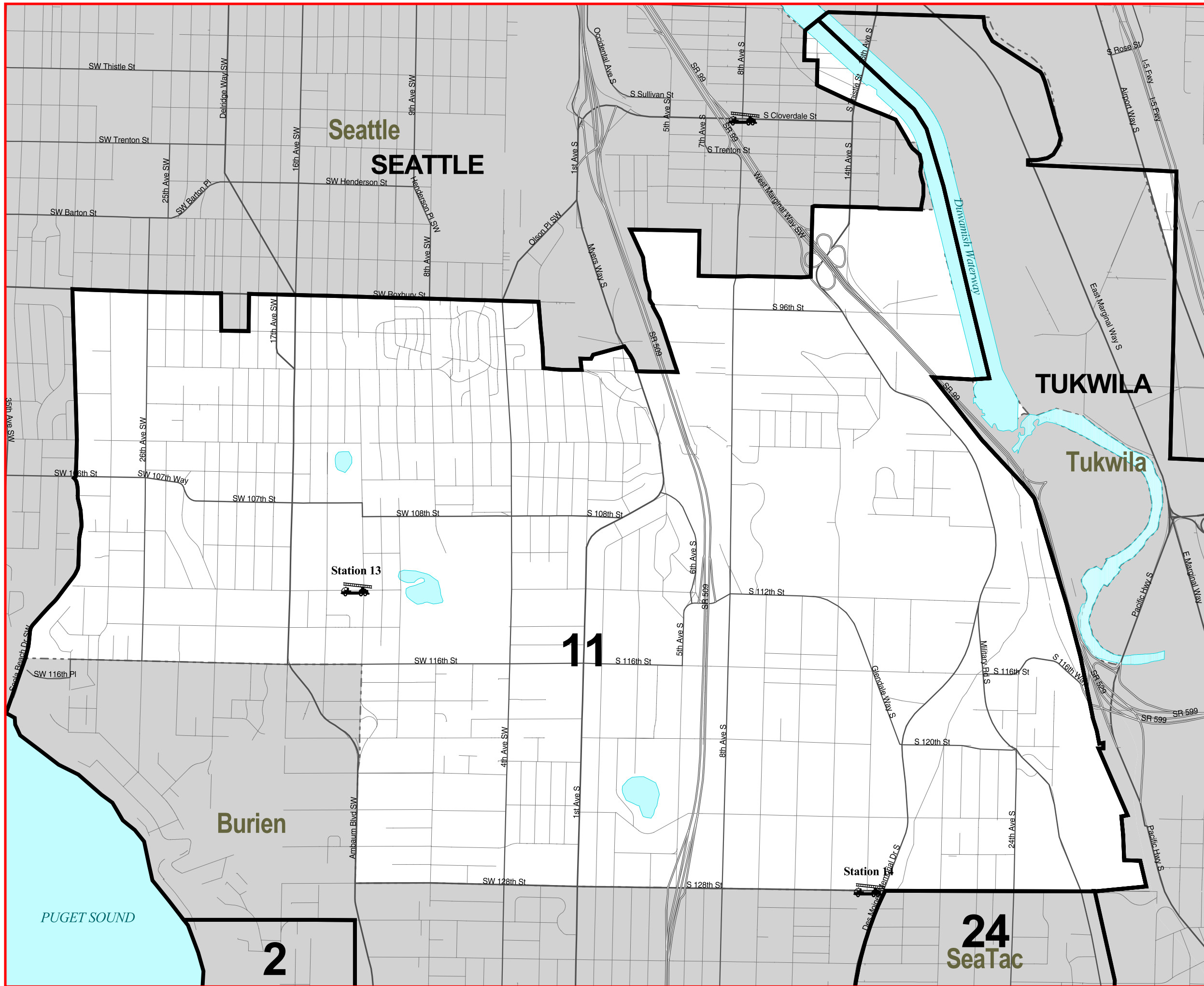
- Activity Center
- Community Business
- Commercial Outside of Centers
- Urban Residential > 12du/ac
- Urban Residential 4-12 du/ac
- Industrial
- King County Owned Open Space/Recreation



King County
DDES Department of Development and Environmental Services
 Geographic Information System

This map is intended for planning purposes only and is not guaranteed to show accurate measurements.

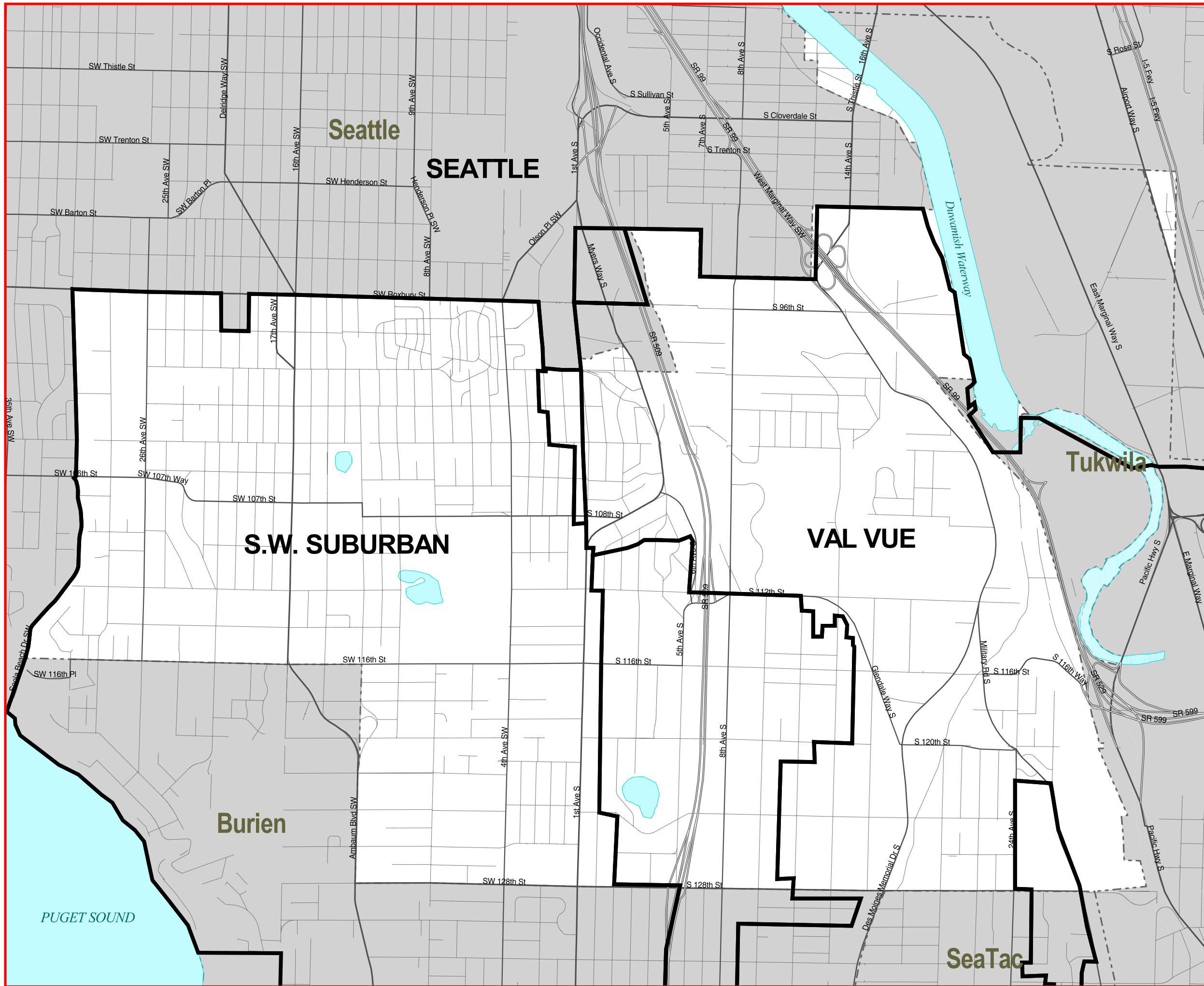
North Highline Fire Districts and Fire Stations



King County
Department of Development and Environmental Services
DDES Geographic Information System

This map is intended for planning purposes only and is not guaranteed to show accurate measurements.

North Highline Water and Sewer Agencies

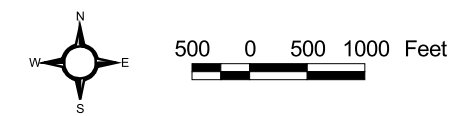
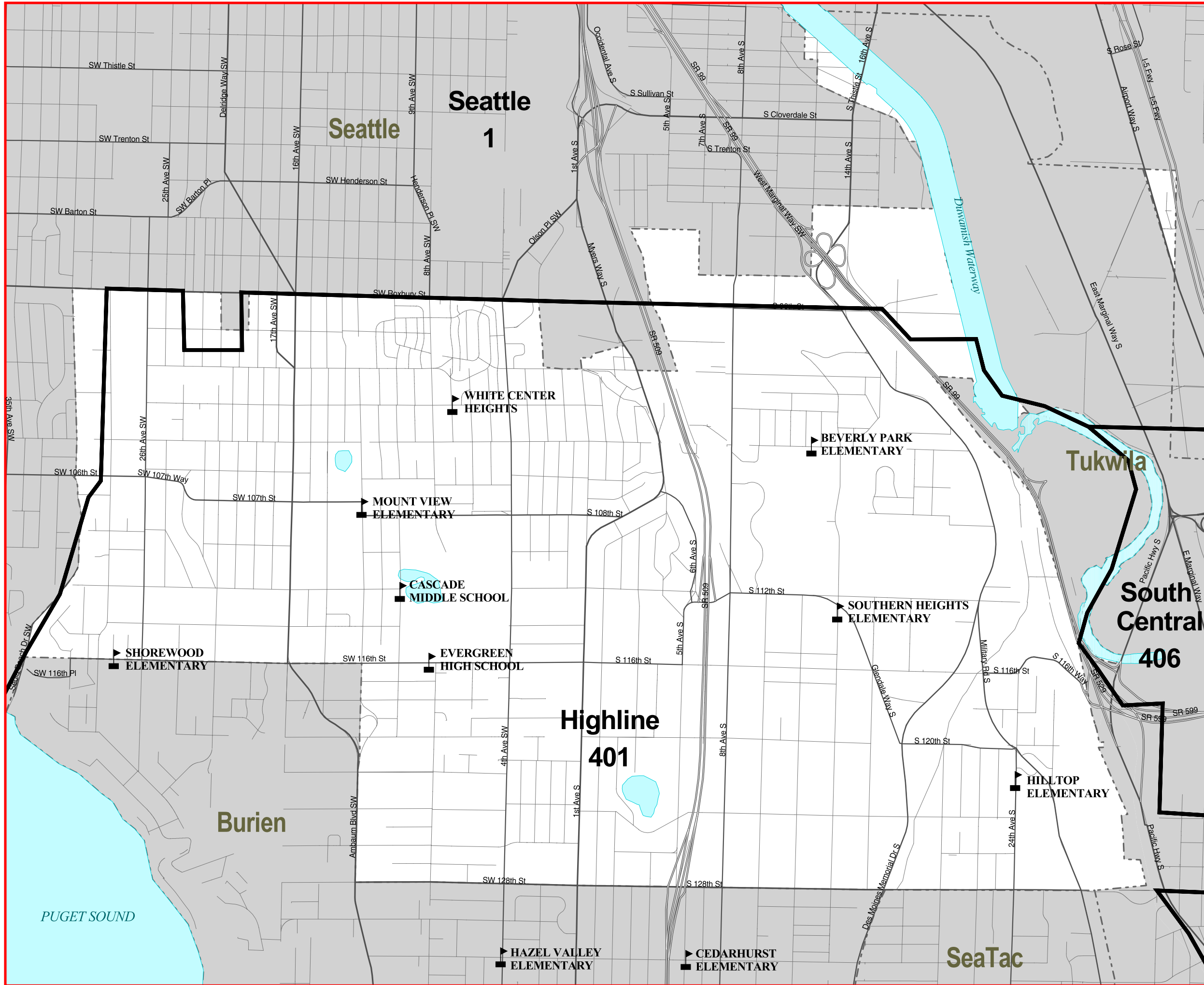


 **King County**
Department of Development and Environmental Services
Geographic Information System

This map is intended for planning purposes only and is not guaranteed to show accurate measurements.

Cartography: Debbie Bull
May 26, 1999 File: m:\debbielarview31nhtlswagcy.apr

North Highline School Districts and School Sites



King County
DDES Department of Development and Environmental Services
 Geographic Information System

This map is intended for planning purposes only and is not guaranteed to show accurate measurements.

Cartography: Debbie Bull
 May 26, 1999 File: m:\debbielarview31nhschool.apr