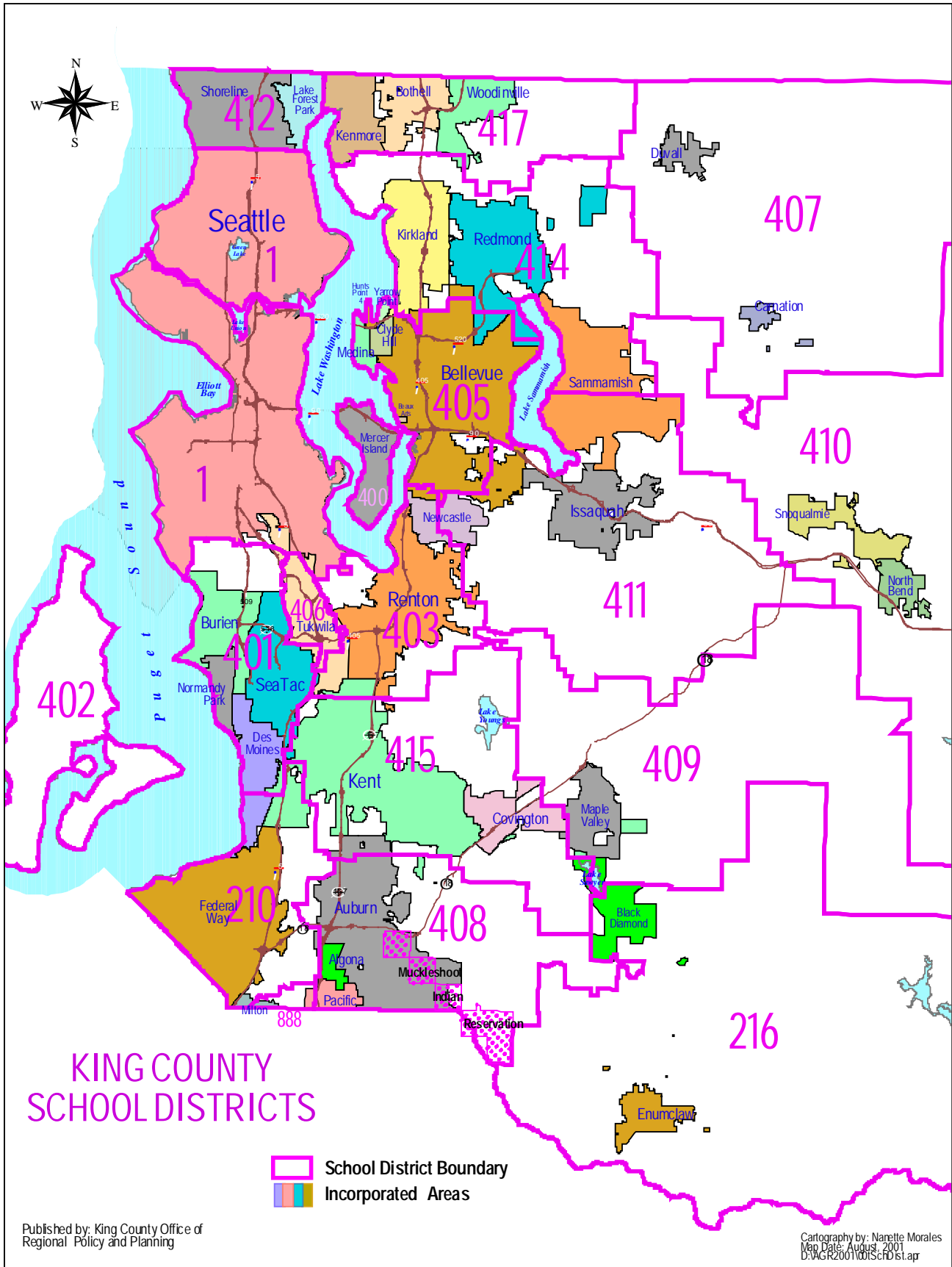


## **VIII. Special Districts**

King County has a complex system of utility and service districts for fire, water, sewers, and schools. This year's Annual Growth Report includes maps of school districts and King County Council Districts.

The following section reports the population and residential building permit activity in unincorporated King County by these special districts. A table called "Estimate of school age poverty population by school districts" is also found in this chapter.



## Population by School District 1990 - 2000

School District	1990 POPULATION	2000 POPULATION	1990-2000 Change	
			#	%
Auburn 408	54,650	67,700	13,050	24%
Bellevue 405	107,700	114,600	6,900	6%
Enumclaw 216	19,700	25,500	5,800	29%
Federal Way 210	103,200	123,000	19,800	19%
Highline 401	111,100	122,500	11,400	10%
Issaquah 411	49,500	73,200	23,700	48%
Kent 415	109,900	137,600	27,700	25%
Lk. Washington 414	131,100	153,500	22,400	17%
Mercer Island	20,800	22,000	1,200	6%
Northshore 417	59,800	72,000	12,200	20%
Renton 403	81,200	95,500	14,300	18%
Riverview 407	11,850	15,800	3,950	33%
Seattle	517,500	564,200	46,700	9%
Shoreline 412	64,800	66,000	1,200	2%
Skykomish 404	600	600	0	0%
Snoqualmie 410	19,300	25,900	6,600	34%
South Central	13,900	16,000	2,100	15%
Tahoma 409	19,000	28,800	9,800	52%
Vashon Island 402	9,300	10,100	800	9%
Fife 800 (KC Portion)	2,400	2,500	100	4%
<b>TOTAL:</b>	<b>1,507,300</b>	<b>1,737,000</b>	<b>229,700</b>	<b>15%</b>

Note: \*Northshore and Fife school districts are each in parts of two counties. Estimated King County portions of the districts are presented here.

Source: US Census 2000 and Washington State Office of Financial Management, April 2001.

# Estimate of School-Age Poverty Population, 1995

## Persons age 5- 17 below poverty level in 1995

### King County School Districts

School District	TOTAL POPULATION	Population Age 5 - 17	Age 5 - 17 Below Poverty Number	Percent
Auburn 408	58,488	11,866	1,397	11.8%
Bellevue 405	115,332	18,258	1,427	7.8%
Enumclaw 216	21,049	4,552	389	8.5%
Federal Way 210	110,319	21,170	1,679	7.9%
Highline 401	119,010	19,181	2,960	15.4%
Issaquah 411	53,254	10,538	208	2.0%
Kent 415	117,711	24,752	2,311	9.3%
Lk. Washington 414	140,220	26,934	1,481	5.5%
Mercer Island	22,282	4,195	149	3.6%
Northshore 417	98,623	21,556	771	3.6%
Renton 403	86,691	14,342	1,116	7.8%
Riverview 407	12,651	2,885	191	6.6%
Seattle	553,934	61,261	11,320	18.5%
Shoreline 412	69,407	11,706	927	7.9%
Skykomish 404	650	116	17	14.7%
Snoqualmie 410	20,721	4,550	261	5.7%
South Central	14,747	1,955	313	16.0%
Tahoma 409	20,427	4,377	182	4.2%
Vashon Island 402	9,965	2,030	127	6.3%
<b>King County Total:</b>	<b>1,645,481</b>	<b>266,224</b>	<b>27,226</b>	<b>10.2%</b>
<b>Balance of WA State:</b>	<b>3,876,068</b>	<b>780,861</b>	<b>106,370</b>	<b>13.6%</b>
<b>WA State Total:</b>	<b>5,521,549</b>	<b>1,047,085</b>	<b>133,596</b>	<b>12.8%</b>

Source: US Census Bureau 1999.

## New Residential Units by School District

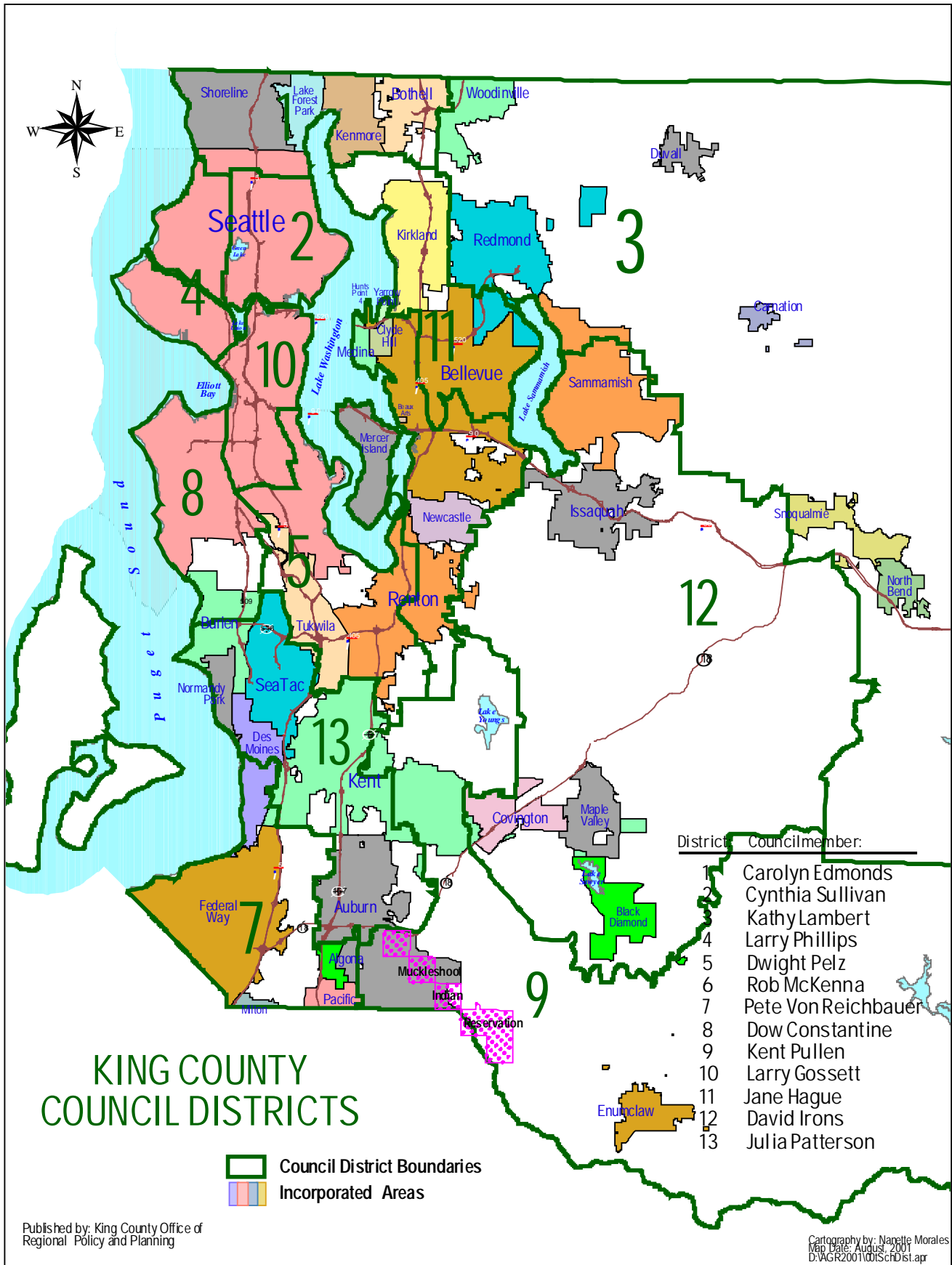
### Unincorporated King County, 1994 - 2001

School District	<u>1994</u>	<u>1995</u>	<u>1996</u>	<u>1997</u>	<u>1998</u>	<u>1999</u>	<u>2000</u>	<u>2001</u>
<b>Auburn 408</b>	187	149	248	129	189	265	241	236
<b>Bellevue 405</b>	7	5	5	5	23	92	23	10
<b>Enumclaw 216</b>	82	62	70	63	71	62	55	50
<b>Federal Way 210</b>	87	152	328	40	57	132	117	181
<b>Highline 401</b>	50	33	35	31	119	28	53	71
<b>Issaquah 411</b>	339	517	765	699	530	647	735	290
<b>Kent 415</b>	499	338	597	470	180	279	138	295
<b>Lk. Washington 414</b>	346	211	280	489	1,062	1,020	762	315
<b>Northshore 417</b>	408	167	234	558	472	445	80	46
<b>Renton 403</b>	249	80	101	202	587	133	203	89
<b>Riverview 407</b>	100	95	103	179	131	104	67	55
<b>Shoreline 412</b>	88	115	12	3	21	1	0	0
<b>Skykomish 404</b>	4	3	6	7	7	3	4	4
<b>Snoqualmie 410</b>	201	188	179	189	125	122	98	105
<b>Tahoma 409</b>	458	367	485	195	83	74	76	60
<b>Vashon Island 402</b>	93	72	87	83	103	86	72	120
<b>Fife 800 (KC Portion)</b>	69	16	17	25	21	7	86	47
<b>TOTAL:</b>	<b>3,267</b>	<b>2,554</b>	<b>3,552</b>	<b>3,367</b>	<b>3,781</b>	<b>3,500</b>	<b>2,810</b>	<b>1,974</b>

*See map of school districts at back of report.*

Note: This information includes only the portions of school districts in unincorporated King County.

Source: King County Department of Development and Environmental Services, residential building permits issued.



## Population by King County Council Districts 1990 and 2000

Council District	<u>1990</u> POPULATION	<u>2000</u> POPULATION	<u>2000 POPULATION IN:</u>		
			Seattle	Other Cities	Unincorporated King County
District 1	115,200	133,500	24,100	100,950	8,450
District 2	116,400	133,600	133,600	0	0
District 3	114,550	133,650	0	64,700	68,950
District 4	116,450	133,500	133,500	0	0
District 5	117,000	133,600	55,950	42,550	35,100
District 6	114,500	133,500	0	117,250	16,250
District 7	116,500	134,000	0	107,000	27,000
District 8	117,250	133,700	82,500	15,000	36,200
District 9	115,150	133,800	0	71,400	62,400
District 10	116,300	133,750	133,750	0	0
District 11	116,500	133,800	0	111,700	22,100
District 12	115,400	133,400	0	70,700	62,700
District 13	116,100	133,200	0	124,000	9,200
<b>TOTAL:</b>	<b>1,507,300</b>	<b>1,737,000</b>	563,400	825,250	348,350

Note: Council district boundaries were redrawn in 2001; 2000 population is for new districts, which are not comparable to 1990.

Source: US Census 1990 and 2000 and Washington State Office of Financial Management, April 2001.

**New Residential Units by King County Council Districts  
(Unincorporated) King County  
1999 through 2001**

<b>District</b>	<b><u>1999</u></b>	<b><u>2000</u></b>	<b><u>2001</u></b>
District 1	209	36	19
District 2	-	-	-
District 3	-	790	411
District 4	-	-	-
District 5	45	58	57
District 6	-	163	78
District 7	124	207	235
District 8	104	97	184
District 9	-	395	508
District 10	-	-	-
District 11	93	104	94
District 12	-	956	366
District 13	-	4	23
<b>TOTAL:</b>	<b>575</b>	<b>2,810</b>	<b>1,975</b>

Note: This information includes only the portions of council districts in unincorporated King County.

Source: King County Department of Development and Environmental Services, residential building permits issued.