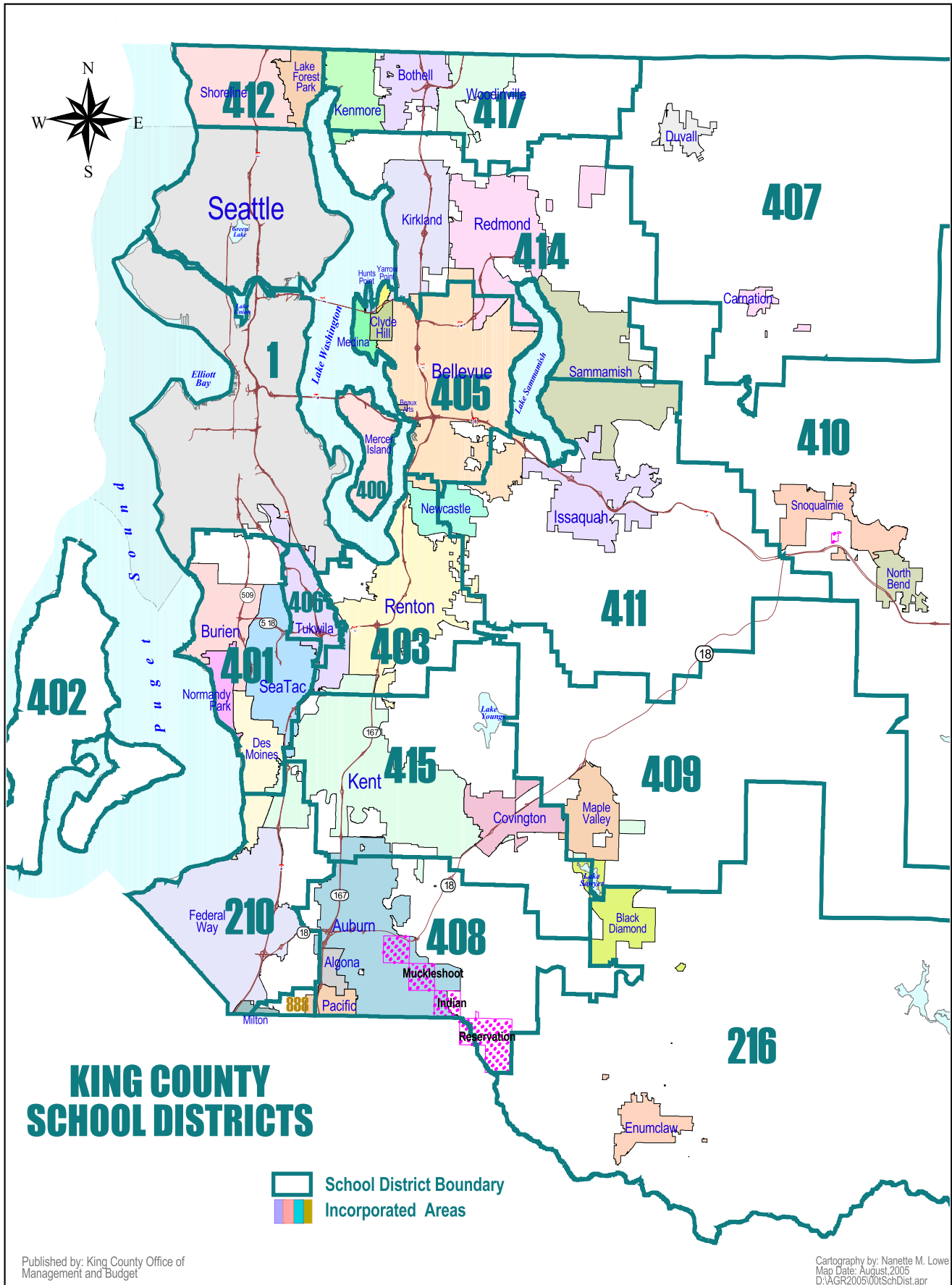


VIII. District Data

King County has a complex system of utility and service districts for fire, water, sewers, and schools. Like in the previous years, this chapter of the report includes maps of school districts and King County Council Districts.

The following section reports the population and residential building permit activity in unincorporated King County by these special districts. A table called “Estimate of school age poverty population by school districts” is also found in this chapter.



Population by School District 1990 - 2000

School District	1990 POPULATION	2000 POPULATION	1990-2000 Change	
			#	%
Auburn 408	54,650	67,700	13,050	24%
Bellevue 405	107,700	114,600	6,900	6%
Enumclaw 216	19,700	25,500	5,800	29%
Federal Way 210	103,200	123,000	19,800	19%
Highline 401	111,100	122,500	11,400	10%
Issaquah 411	49,500	73,200	23,700	48%
Kent 415	109,900	137,600	27,700	25%
Lk. Washington 414	131,100	153,500	22,400	17%
Mercer Island	20,800	22,000	1,200	6%
Northshore 417	59,800	72,000	12,200	20%
Renton 403	81,200	95,500	14,300	18%
Riverview 407	11,850	15,800	3,950	33%
Seattle	517,500	564,200	46,700	9%
Shoreline 412	64,800	66,000	1,200	2%
Skykomish 404	600	600	0	0%
Snoqualmie 410	19,300	25,900	6,600	34%
South Central	13,900	16,000	2,100	15%
Tahoma 409	19,000	28,800	9,800	52%
Vashon Island 402	9,300	10,100	800	9%
Fife 800 (KC Portion)	2,400	2,500	100	4%
TOTAL:	1,507,300	1,737,000	229,700	15%

Note: *Northshore and Fife school districts are each in parts of two counties. Estimated King County portions of the districts are presented here.

Source: US Census 2000 and Washington State Office of Financial Management, April 2001.

Estimate of Persons Below Poverty Level, 1999

School age and total population

King County School Districts, 2000 Census

School District	TOTAL POPULATION*	Persons below poverty		Population Age 5 - 17	Age 5 - 17 below poverty	
		Number	Percent		Number	Percent
Auburn 408	66,710	6,900	10.3%	13,365	1,555	11.6%
Bellevue 405	113,725	6,300	5.5%	17,585	1,125	6.4%
Enumclaw 216	25,420	1,435	5.6%	5,654	279	4.9%
Federal Way 210	122,585	10,565	8.6%	24,710	2,745	11.1%
Highline 401	119,525	12,495	10.5%	21,405	2,880	13.5%
Issaquah 411	72,850	2,600	3.6%	15,345	585	3.8%
Kent 415	137,030	10,340	7.5%	29,285	2,855	9.7%
Lk. Washington 414	151,240	6,640	4.4%	26,585	1,240	4.7%
Mercer Island	21,845	695	3.2%	4,669	189	4.0%
Northshore 417 **	72,000	3,200	4.4%	14,900	770	5.2%
Renton 403	95,005	7,565	8.0%	14,970	1,850	12.4%
Riverview 407	15,670	580	3.7%	3,500	185	5.3%
Seattle	543,970	64,145	11.8%	59,905	9,020	15.1%
Shoreline 412	65,565	4,125	6.3%	11,330	610	5.4%
Skykomish 404	645	85	13.2%	114	30	26.3%
Snoqualmie 410	25,585	1,120	4.4%	5,055	285	5.6%
Tahoma 409	28,610	860	3.0%	6,499	159	2.4%
Tukwila 406	15,875	2,105	13.3%	2,720	525	19.3%
Vashon Island 402	10,065	600	6.0%	1,819	124	6.8%
Fife **	2,400	200	8.3%	500	50	10.0%
King County Total:	1,706,320	142,555	8.4%	279,915	27,061	9.7%
Balance of WA State:	4,058,880	469,815	11.6%	816,485	114,639	14.0%
WA State Total:	5,765,200	612,370	10.6%	1,096,400	141,700	12.9%

Notes: * Total indicates non-institutional population for which poverty data are tabulated. All data are rounded.

** Portion of Northshore and Fife school districts in King County is estimated.

Source: 2000 US Census, US Census Bureau, and National Center for Education Statistics, 2004.

New Residential Units by School District

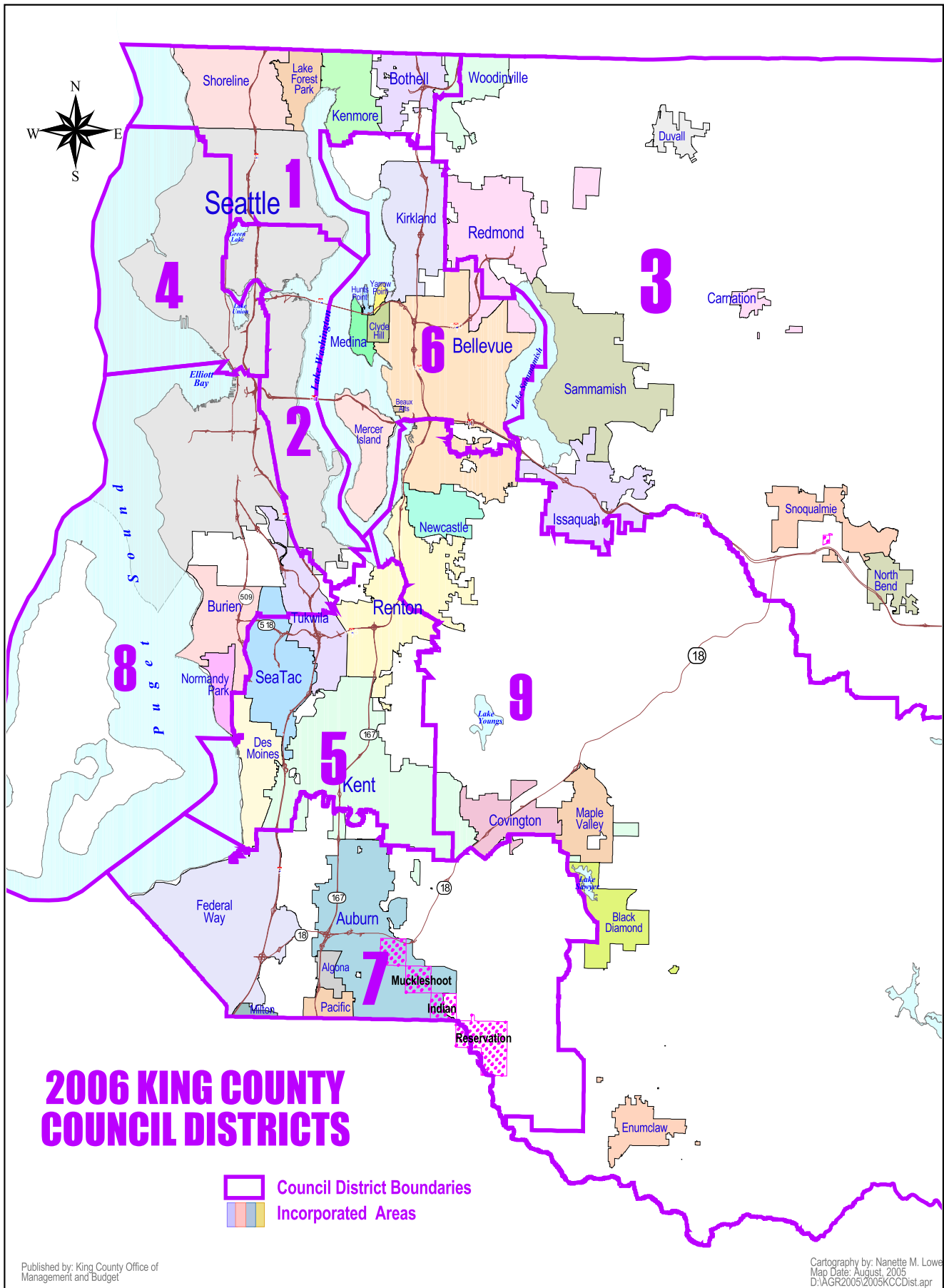
Unincorporated King County, 1994 - 2004

School District	<u>1994</u>	<u>1995</u>	<u>1996</u>	<u>1997</u>	<u>1998</u>	<u>1999</u>	<u>2000</u>	<u>2001</u>	<u>2002</u>	<u>2003</u>	<u>2004</u>
Auburn 408	187	149	248	129	189	265	241	236	279	298	171
Bellevue 405	7	5	5	5	23	92	23	10	2	0	0
Enumclaw 216	82	62	70	63	71	62	55	50	62	47	61
Federal Way 210	87	152	328	40	57	132	117	181	302	470	291
Highline 401	50	33	35	31	119	28	53	71	74	68	100
Issaquah 411	339	517	765	699	530	647	735	290	117	73	98
Kent 415	499	338	597	470	180	279	138	295	252	401	431
Lk. Washington 414	346	211	280	489	1,062	1,020	762	315	618	638	434
Northshore 417	408	167	234	558	472	445	80	46	98	81	105
Renton 403	249	80	101	202	587	133	203	89	79	719	464
Riverview 407	100	95	103	179	131	104	67	55	54	63	140
Shoreline 412	88	115	12	3	21	1	0	0	0	0	0
Skykomish 404	4	3	6	7	7	3	4	4	9	6	4
Snoqualmie 410	201	188	179	189	125	122	98	105	115	95	169
Tahoma 409	458	367	485	195	83	74	76	60	247	148	126
Vashon Island 402	93	72	87	83	103	86	72	120	60	34	55
Fife 800 (KC Portion)	69	16	17	25	21	7	86	47	77	13	20
TOTAL:	3,267	2,554	3,552	3,367	3,781	3,500	2,810	1,974	2,445	3,154	2,669

See map of school districts at back of report.

Note: This information includes only the portions of school districts in unincorporated King County.

Source: King County Department of Development and Environmental Services, residential building permits issued.



Population by King County Council District 1990 and 2000

Council District	<u>1990</u> POPULATION	<u>2000</u> POPULATION	<u>2000 POPULATION IN:</u>		
			Seattle	Other Cities	Unincorporated King County
District 1	115,200	133,500	24,100	100,950	8,450
District 2	116,400	133,600	133,600	0	0
District 3	114,550	133,650	0	64,700	68,950
District 4	116,450	133,500	133,500	0	0
District 5	117,000	133,600	55,950	42,550	35,100
District 6	114,500	133,500	0	117,250	16,250
District 7	116,500	134,000	0	107,000	27,000
District 8	117,250	133,700	82,500	15,000	36,200
District 9	115,150	133,800	0	71,400	62,400
District 10	116,300	133,750	133,750	0	0
District 11	116,500	133,800	0	111,700	22,100
District 12	115,400	133,400	0	70,700	62,700
District 13	116,100	133,200	0	124,000	9,200
TOTAL:	1,507,300	1,737,000	563,400	825,250	348,350

Note: Council district boundaries were redrawn in 2001; 2000 population is for new districts, which are not comparable to 1990.

Source: US Census 1990 and 2000 and Washington State Office of Financial Management, April 2001.

**New Residential Units by King County Council District
Unincorporated King County
1999 through 2003**

District	<u>1999</u>	<u>2000</u>	<u>2001</u>	<u>2002</u>	<u>2003</u>
District 1	209	36	19	76	52
District 2	-	-	-	-	-
District 3	-	790	411	730	765
District 4	-	-	-	-	-
District 5	45	58	57	120	557
District 6	-	163	78	12	12
District 7	124	207	235	417	518
District 8	104	97	184	88	99
District 9	-	395	508	388	663
District 10	-	-	-	-	-
District 11	93	104	94	79	64
District 12	-	956	366	404	300
District 13	-	4	23	131	124
TOTAL:	575	2,810	1,975	2,445	3,154

**New Residential Units by
The "NEW" King County Council District
Unincorporated King County
2004**

District	<u>2004</u>
District 1	81
District 2	5
District 3	787
District 4	
District 5	311
District 6	52
District 7	514
District 8	160
District 9	759
TOTAL:	2,669

Note: This information includes only the portions of council districts in unincorporated King County.

Source: King County Department of Development and Environmental Services, residential building permits issued.