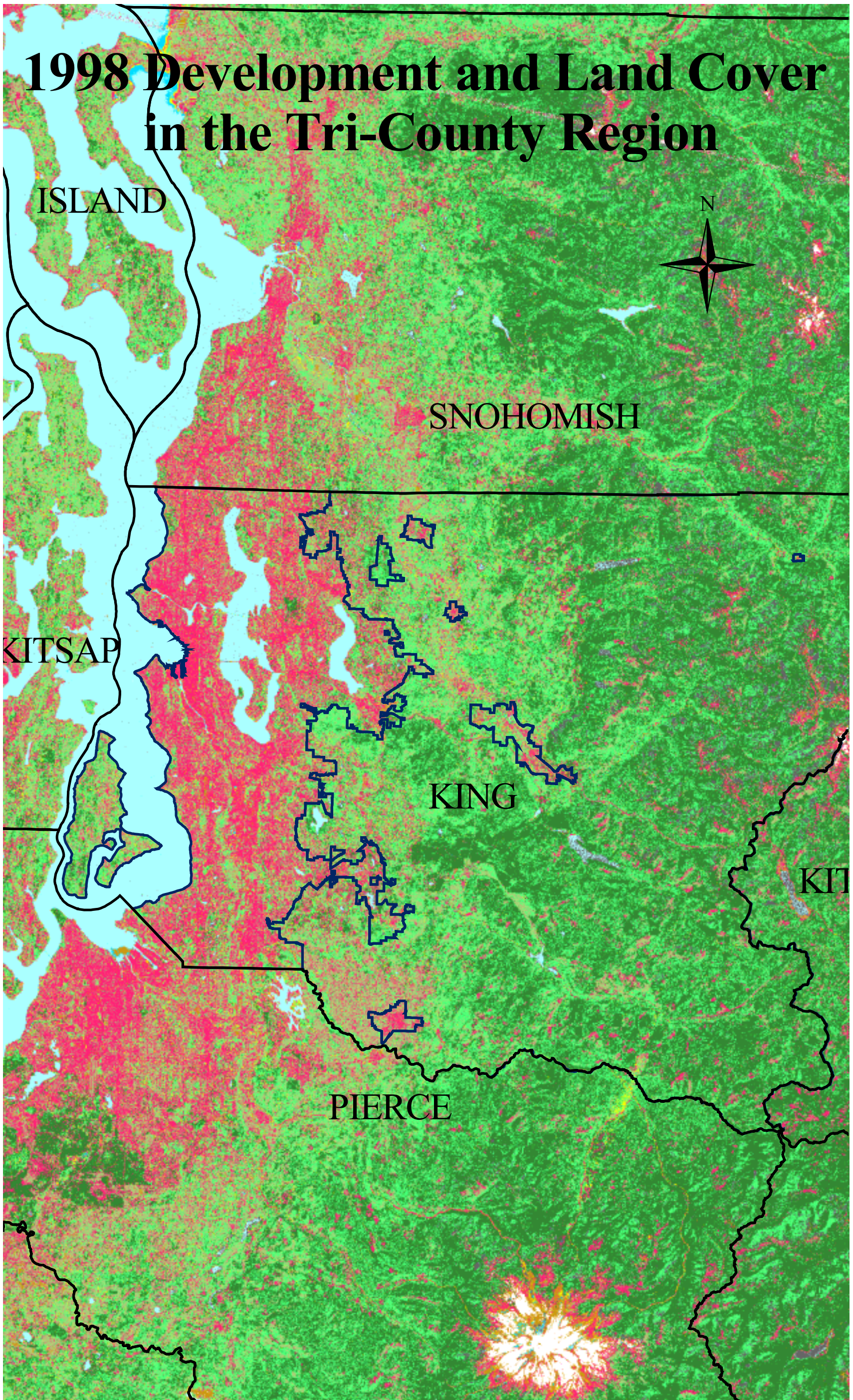


# 1998 Development and Land Cover in the Tri-County Region



ISLAND



SNOHOMISH

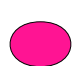


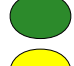

KITSAP

KING

KIT

PIERCE

-  County Boundaries
-  Urban Growth Boundary

- Land Cover Type
-  Developed
  -  Grass, Shrub, Cultivated
  -  Deciduous or Mixed Forest
  -  Evergreen Forest
  -  Wetlands, Shoreline Vegetation

-  Water
-  Dirt and Cut Fields
-  Bare Grass/Low Density
-  Snow
-  Shadow

Note: Red areas ("developed") in the eastern portion of the County, such as those around Mt. Rainier, are actually rock surface rather than developed areas. Landsat analysis cannot distinguish natural rock from the paved or concrete surfaces typical of developed areas.