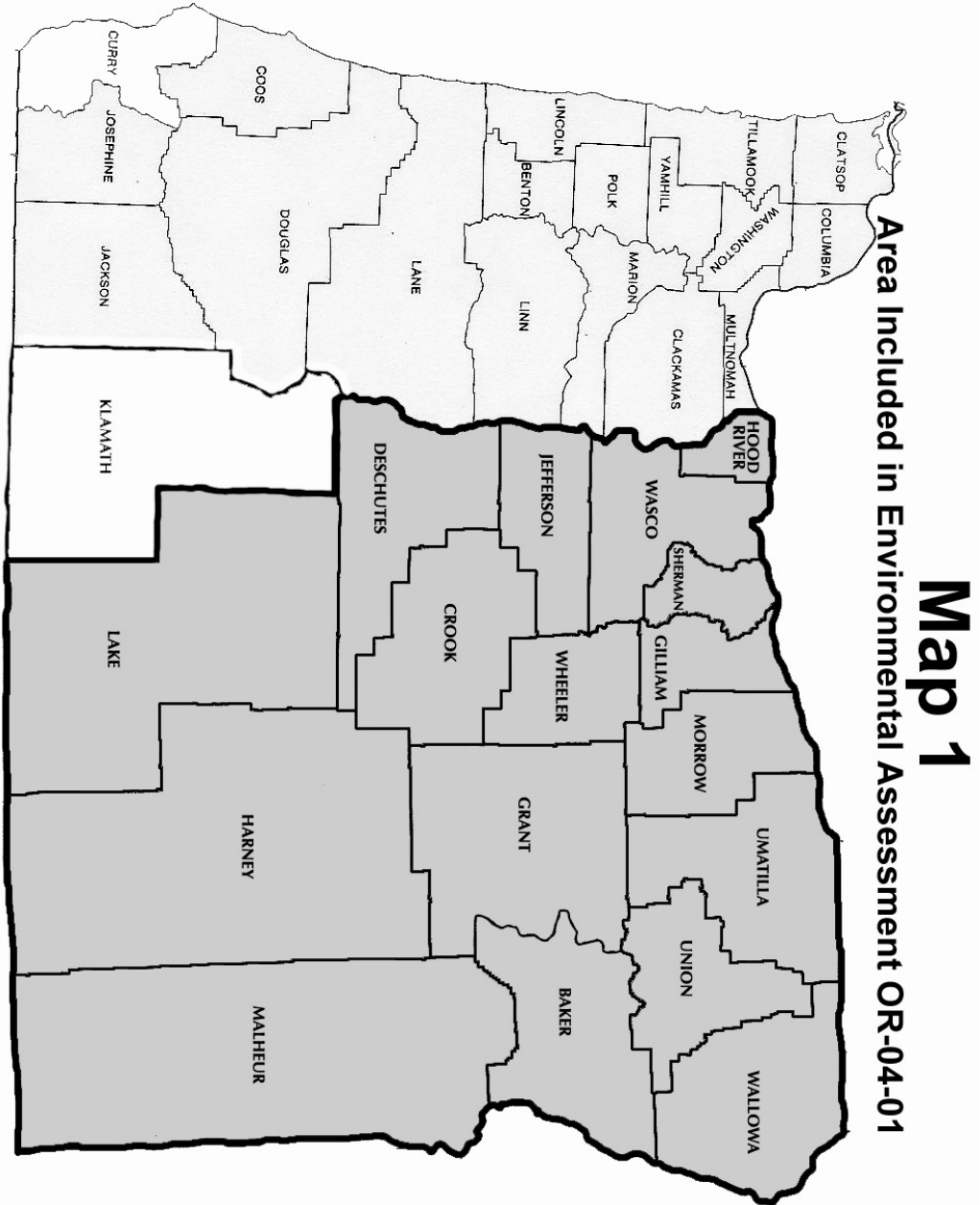


APPENDIX 2: Maps of Affected Environment





2007 Oregon Grasshopper and Mormon Cricket Survey Map

Oregon Department of Agriculture (ODA) in Cooperation with USDA-APHIS-PPQ

Prepared by: 2007-2008
 Project: Oregon Grasshopper and Mormon Cricket Survey
 Date: 10/2008
 Author: [Name obscured]
 This map was prepared by the Oregon Department of Agriculture in cooperation with the United States Department of Agriculture, Animal and Plant Health Inspection Service, Plant Protection and Quarantine. The map is a product of the Oregon Department of Agriculture and the United States Department of Agriculture, Animal and Plant Health Inspection Service, Plant Protection and Quarantine. The map is a product of the Oregon Department of Agriculture and the United States Department of Agriculture, Animal and Plant Health Inspection Service, Plant Protection and Quarantine.



MAP 2

Legend

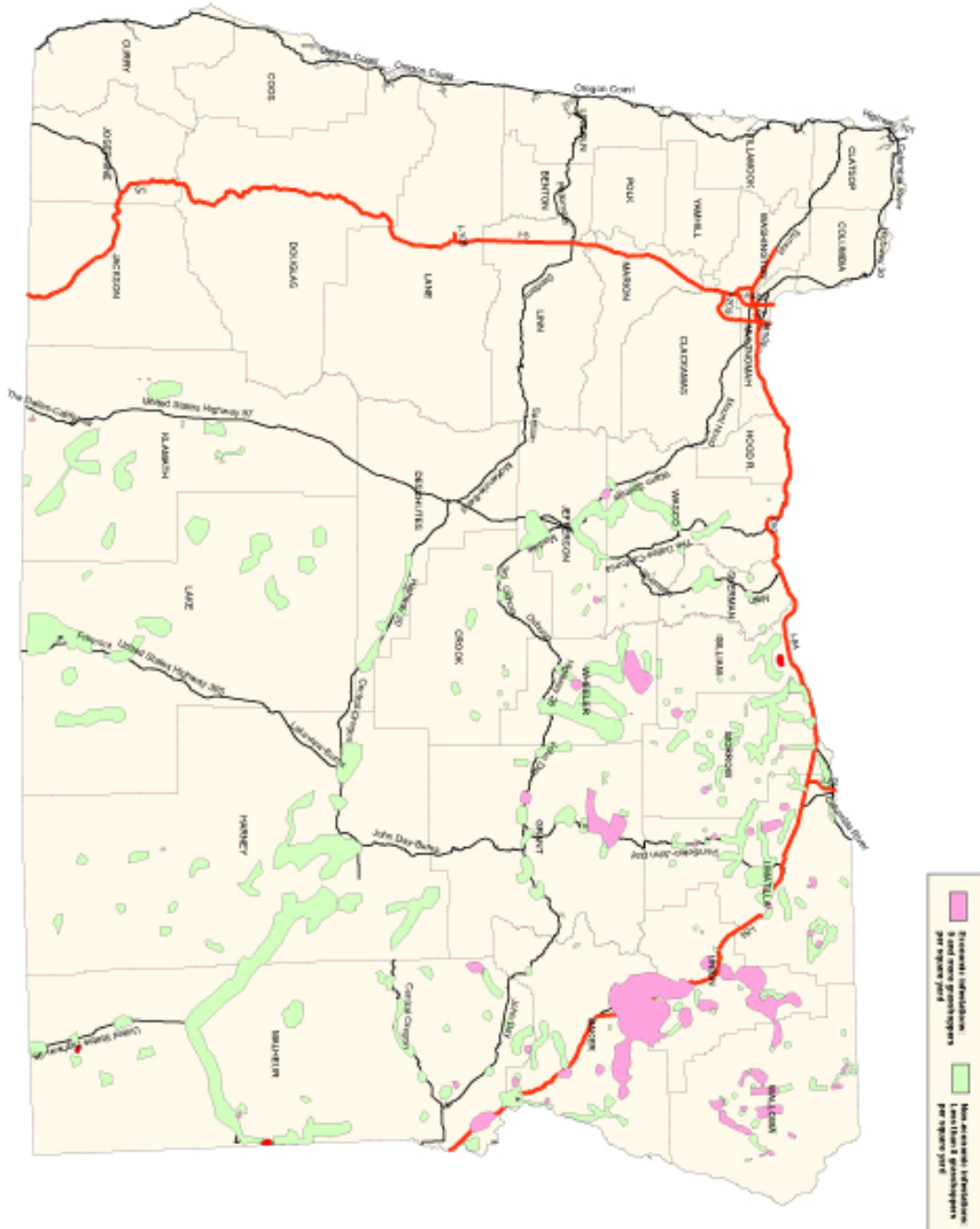
- OH Infestation areas
- OH Non-economic areas
- MC economic areas

OH Infestation per County:

Baker	335,580 acres
Cook	378 acres
Gilliam	5,188 acres
Grant	76,087 acres
Harney	642 acres
Jefferson	7,185 acres
Johnson	3,128 acres
Morrow	4,810 acres
Union	31,324 acres
Wallowa	83,603 acres
Wheeler	55,142 acres
Malheur	40,726 acres
TOTAL:	798,298 acres

MC Infestation per County:

Gilliam	5,369 acres
Malheur	5,202 acres
TOTAL:	11,571 acres

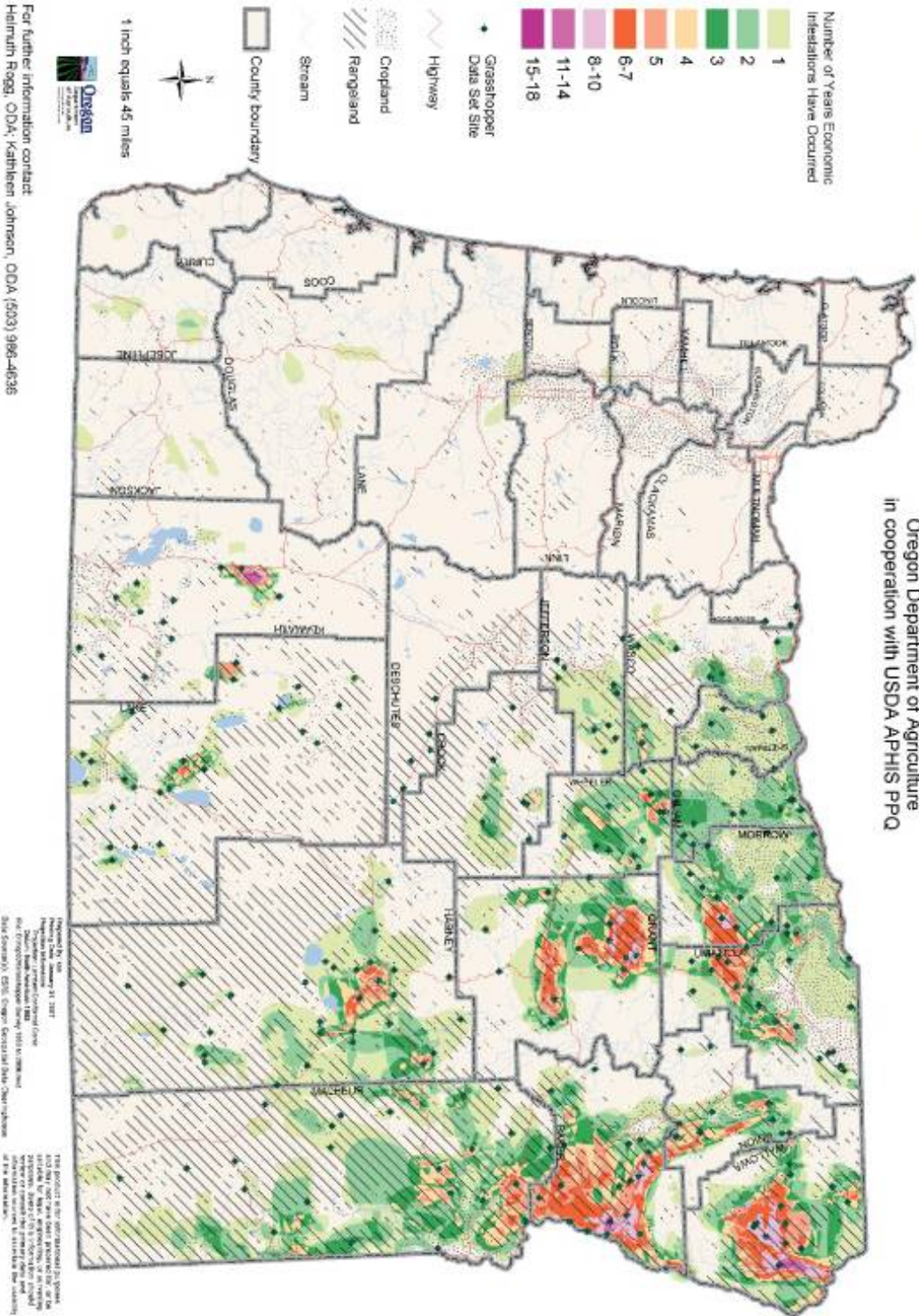


Potential infestations of Mormon crickets per square yard

Non-economic infestations of grasshoppers per square yard

MAP 3

Economic Infestations of Grasshoppers in Oregon 1953 through 2006 Oregon Department of Agriculture in cooperation with USDA APHIS PPQ



Map 4 Ecoregions Of Eastern Oregon

- Columbia Plateau
- Blue Mountains
- Snake River Plain
- Northern Basin & Range
- Central Basin & Range
- Eastern Cascades Slopes & Foothills

