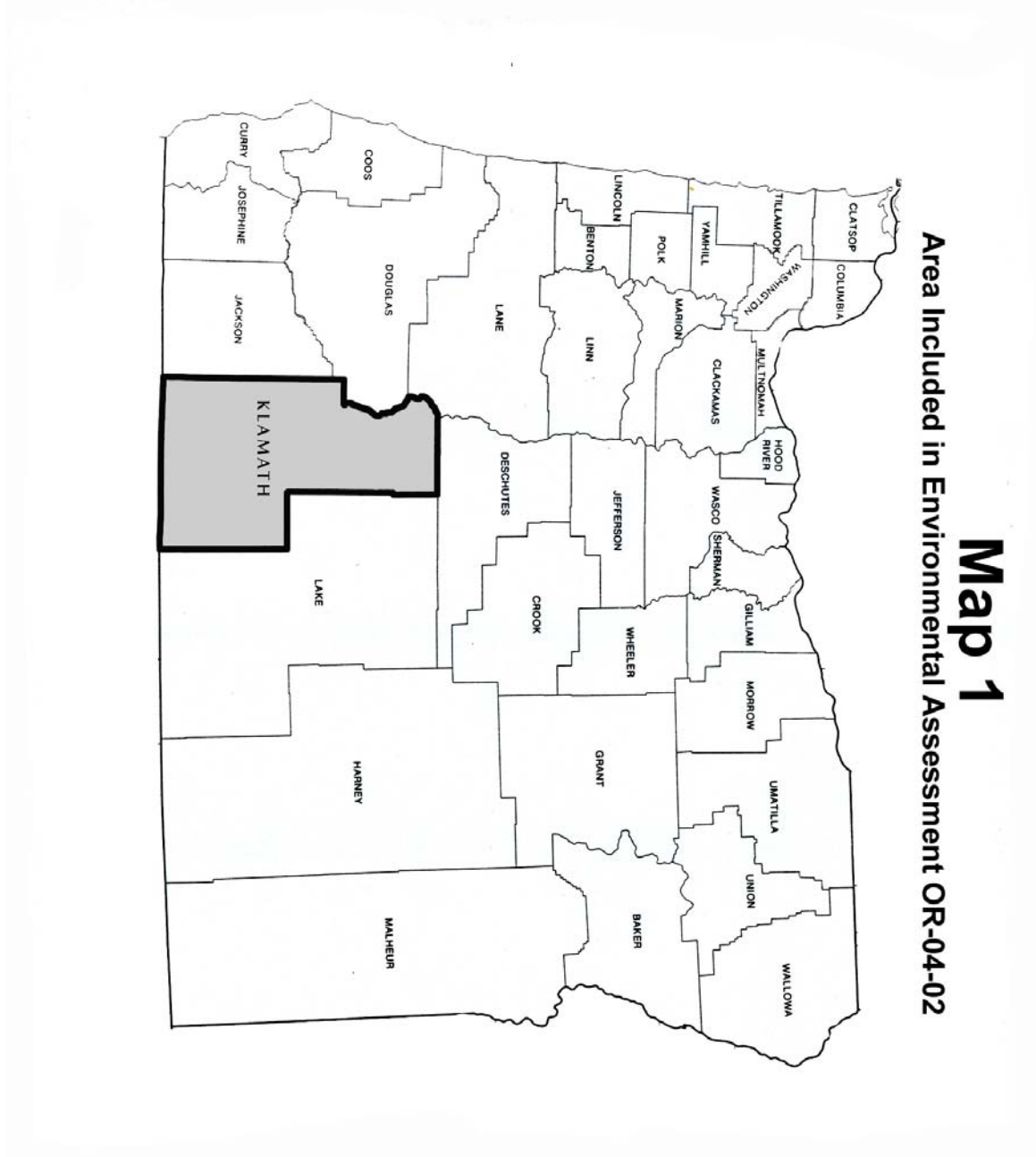


APPENDIX 2: Maps of Affected Environment





2007 Oregon Grasshopper and Mormon Cricket Survey Map

Oregon Department of Agriculture (ODA) in Cooperation with USDA-APHIS-PPQ

Prepared by: 2007-2008
 Project: Oregon Grasshopper and Mormon Cricket Survey
 Date: 10/2008
 Author: [Name obscured]
 This map was prepared by the Oregon Department of Agriculture in cooperation with the United States Department of Agriculture, Animal and Plant Health Inspection, Plant Protection and Quarantine. The map is for informational purposes only and does not constitute a warranty of any kind. The Oregon Department of Agriculture is not responsible for any errors or omissions on this map.



MAP 2

Legend

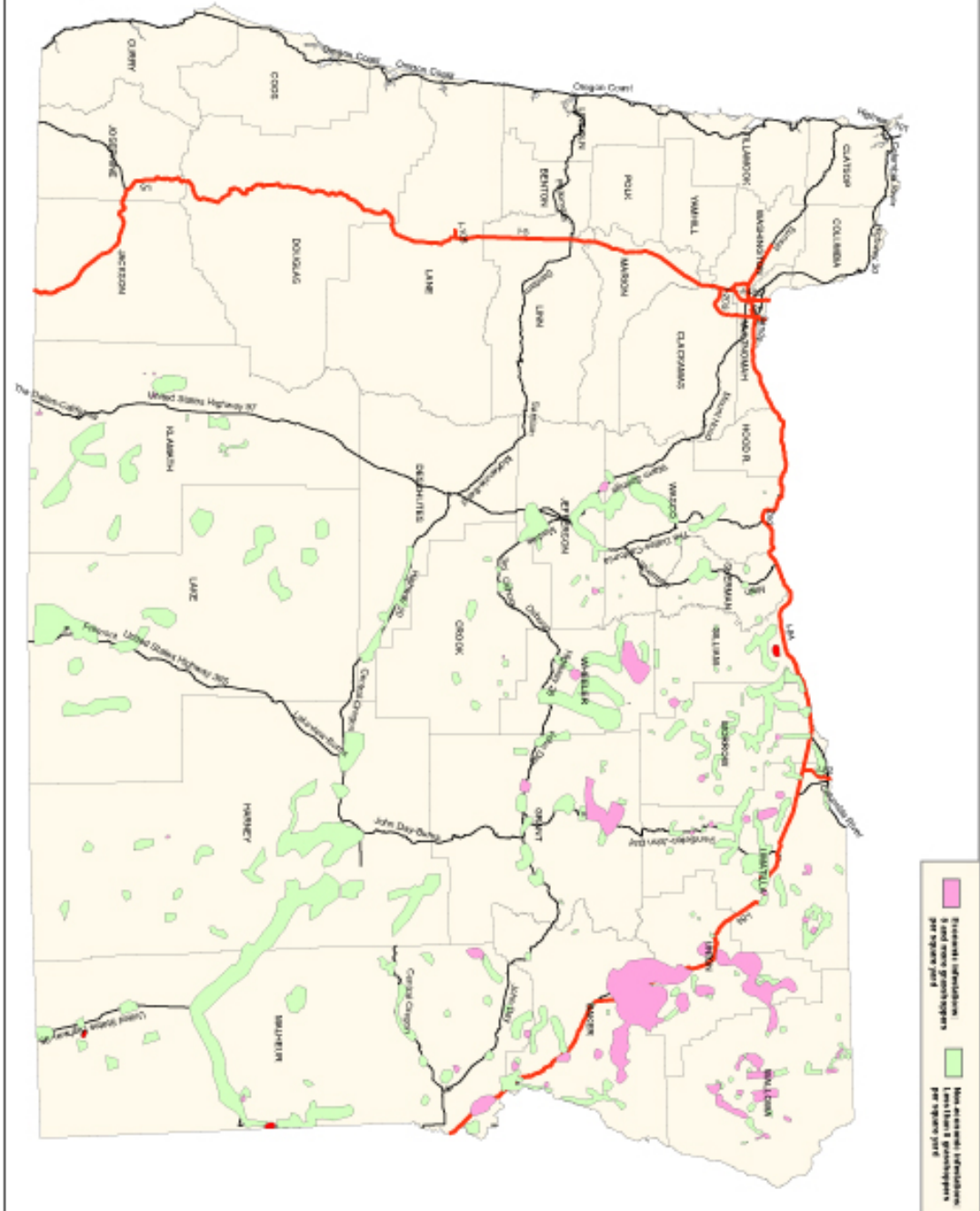
- OH Infestation areas
- OH Non-economic areas
- MC economic areas

OH Infestation per County:

Baker	335,580 acres
Cook	378 acres
Gilliam	5,188 acres
Grant	76,087 acres
Harris	642 acres
Jefferson	7,185 acres
Johnson	3,128 acres
Morrow	4,810 acres
Union	31,324 acres
Wallowa	83,603 acres
Wheeler	55,142 acres
Malheur	40,726 acres
TOTAL:	798,258 acres

MC Infestation per County:

Gilliam	5,369 acres
Malheur	5,202 acres
TOTAL:	11,571 acres



Infestation Legend:

- Infestation areas
- Non-economic areas
- Economic areas

Map 4 Ecoregions Of Eastern Oregon

- Columbia Plateau
- Blue Mountains
- Snake River Plain
- Northern Basin & Range
- Central Basin & Range
- Eastern Cascades Slopes & Foothills

