



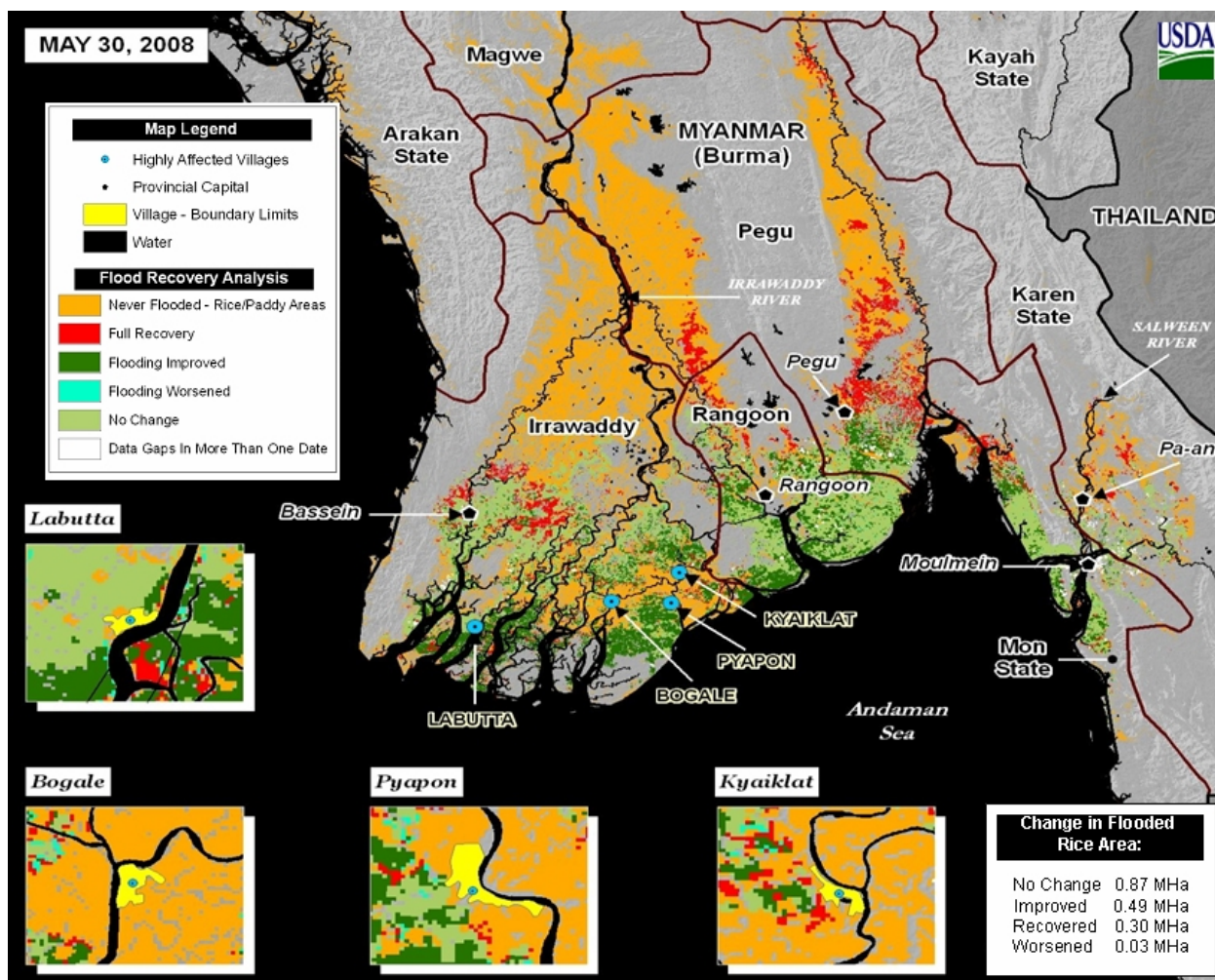
United States
Department of
Agriculture

Foreign
Agricultural
Service

Circular Series
WAP 06-08
June 2008

World Agricultural Production

Burma: Post-Flood Rice Impact Analysis - May 30, 2008



Tropical cyclone Nargis struck the heart of Burma's rice growing region in the low-lying Ayeyarwady delta on May 2nd, causing extensive damage to agricultural lands, infrastructure, livestock, and stored food grains. A 12-foot storm surge (tidal wave) accompanied the cyclone, reportedly penetrating 25 to 30 miles inland along the storm's path. Nearly 2,000 square miles of prime farmland was inundated with salt water and/or heavy rainfall. The affected region normally accounts for roughly 60 percent of the nation's rice production. The United Nations estimates that 2.4 million people were directly impacted by the storm. The outlook for the 2008/09 rice crop is very uncertain, as the planting window will close in late July. Little to no actual progress has been made to restore or rehabilitate damaged lands and infrastructure, while

Approved by the World Agricultural Outlook Board

farmers are yet to be supplied with sufficient food, viable seed, tools, livestock or replacement mechanical tillers and fuel. USDA has conducted a post-flood assessment, which indicates that as of May 30th floodwaters have receded over a sizable area (300,000 hectares total recovery; 490,000 hectares improved since May 5th). However, a month after the cyclone, approximately 1.35 million hectares or 77 percent of the original flooded area is still affected by some degree of flooding. Approximately 870,000 hectares has shown no improvement. Because of persistent flood conditions and the fast-closing planting window for rice, USDA expects that approximately 700,000 hectares will go unsown in the main monsoon season, thereby reducing overall rice area in 2008/09. USDA currently estimates 2008/09 Burma rice production at 9.4 million tons (milled basis), down 0.6 million from last month and 12 percent from last year. Harvested area is estimated at 6.4 million hectares, down 10 percent from last year. Crop yield is estimated at 2.54 tons per hectare, which is below the 5-year average of 2.63 tons/hectare. (*For more information, contact Michael Shean at 202-720-7366.*)

Afghanistan: Estimated Wheat Production in 2008/09 Declines Owing to Drought

Winter grain growing conditions in much of Afghanistan are significantly worse than last year, owing to prolonged drought and low winter snowfall. The Famine Early Warning System (FEWS NET) reported in March 2008 that much of Afghanistan received 50 to 90 percent less precipitation and that both rainfed and irrigated crops would be seriously affected. Field surveys in late spring indicate that about 80 percent of the nation's rainfed wheat crop and 30 percent of its irrigated crop have been lost due to severe dryness. The irrigated wheat crop relies extensively on snowmelt for irrigation supply, and in normal years accounts for roughly 80 percent of total wheat production. Winter wheat planting normally occurs between mid-September and mid-November, while harvest typically occurs from June to September. USDA estimates Afghanistan 2008/09 wheat production at 2.5 million tons, down 1.3 million or 34 percent from last year. Wheat yields are estimated at 1.15 tons per hectare, 18 percent below average. (*For more information, contact Michael Shean at 202-720-7366.*)

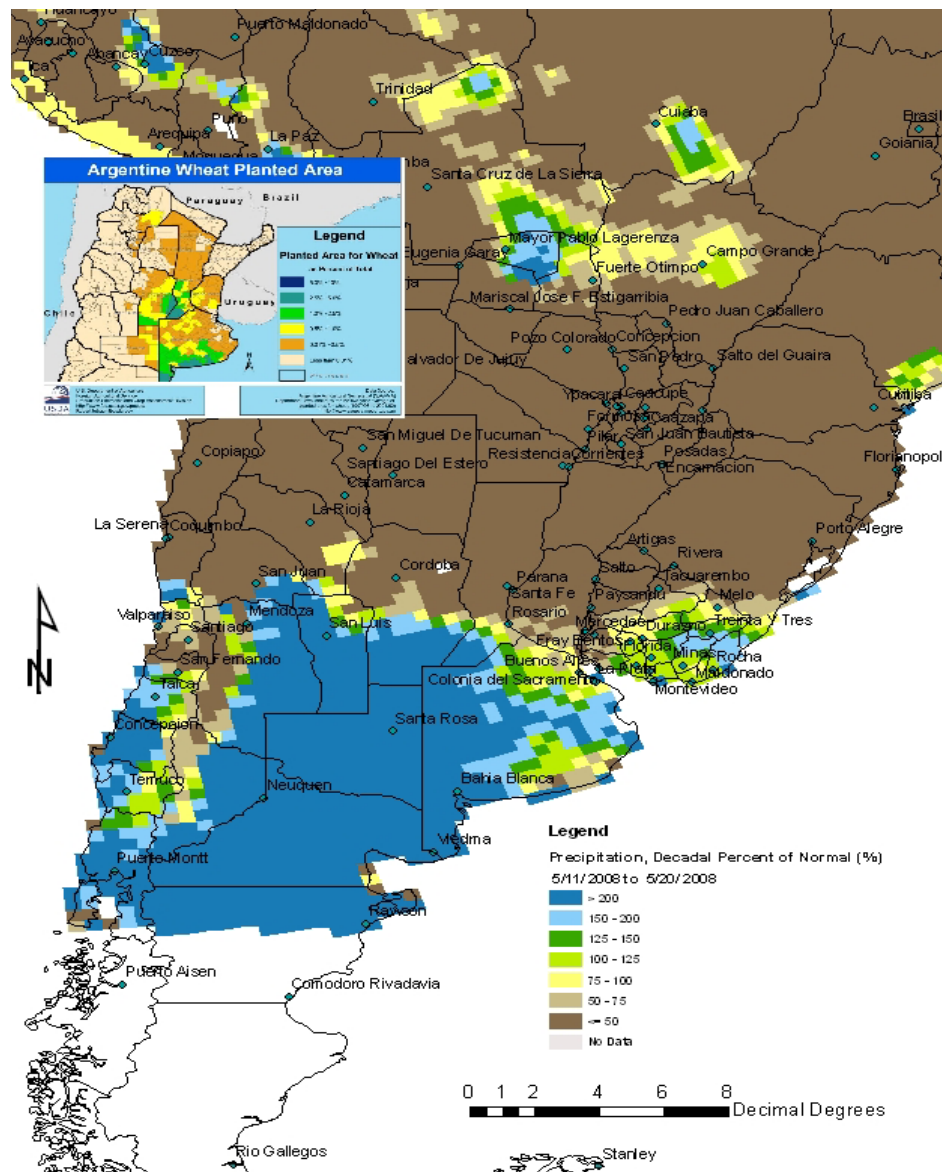
European Union: Rapeseed Record Production Expected From Increased Yield

The European Union (EU-27), the world's largest rapeseed producer, is forecast to harvest a record 19.0 million tons in 2008/09. This represents a 0.7 million ton increase from last year, due to yield recovery. The 2007/08 harvest was reduced by heavy rainfall at harvest. Still, the low 2007/08 yield (2.79 tons per hectare) resulted in a record 18.3 million tons from 6.6 million hectares. USDA forecasts the biggest producers for 2008/09 to be Germany at 5.3 million tons (5.3 million last year), France at 4.7 (4.6) million, the United Kingdom at 2.2 (2.1) million, Poland at 2.2 (2.1) million, and the Czech Republic at 1.0 (1.0) million. In 2008/09, area is forecast to drop by 0.2 million hectares to 6.4 million. The dip in area represents the first lowering of rapeseed area since 2003/04. A combination of factors have contributed to the reduction, including increased grain prices, increased taxes on biodiesel in Germany, and the elimination of 2008/09 set-aside area, which allowed crops other than just industrial oilseeds to be planted on this reserved area. Weather has been very favorable for plant growth, including a mild winter with practically no winterkill damage to the predominantly autumn-planted crop. Recently, however, developing dryness in western Poland and eastern Germany (prime rapeseed areas) could prove unfavorable to the crop if precipitation does not return in the next few weeks.

The crop is typically harvested in July. (For more information, contact Bryan Purcell at 202-690-0138.)

Argentina: Rains Arrive But Wheat Planting Still Behind

Argentina's 2008/09 wheat production is forecast 14.5 million tons, down 0.5 million from last month and down 1.5 million from last year. Area harvest data is forecast at 5.1 million hectares, down 0.2 million from last month. With very limited rain in much of Argentina through April and May, wheat planting for this year is significantly delayed as of the end of May. In the province of Buenos Aires, the lack of soil moisture has set Bahia Blanca behind in planting with

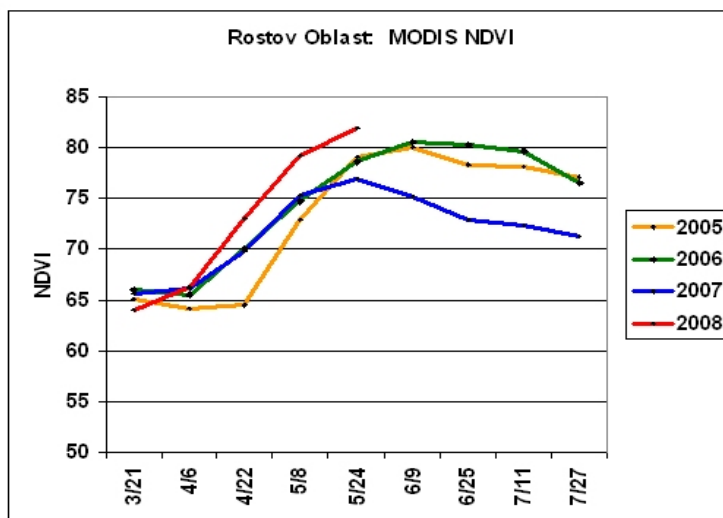


only 18 percent (53,500 hectares) of the expected area seeded. In Cordoba, planting is running very late with moisture insufficient even for seed emergence in many locations. In Entre Rios, only three percent of the intended area is currently planted and La Pampa, which did receive some rain during the third week of May, has soils that are just now in shape for land preparation prior to planting. Santa Fe is showing slow emergence of wheat seedlings with only six percent of fields currently emerging. Wheat planting is lagging this year according to the Secretary of Agriculture and confirmed by the grain exchange, Bolsa

de Cereales de Buenos Aires (BCBA) with crop planting now totaling only 568,000 hectares or 10.4 percent of the useful area, 5 percent behind last year. (For more information, contact Denise McWilliams at 202-720-0107.)

Russia: Bumper Wheat Crop Forecast for 208/09

The USDA estimates Russia wheat production for 2008/09 at 54.0 million tons, up 2.0 million or 4 percent from last month and up 4.6 million or 9 percent from last year. The month-to-month increase in estimated production is based on analysis of satellite-derived vegetative indices that indicate outstanding winter-crop conditions in the Southern District. Winter wheat typically comprises about 60 percent of Russia's total wheat production, and the Southern District accounts for roughly two-thirds of the winter wheat output. Weather has been favorable in the remainder of the winter-wheat zone as well. Virtually all of the country's winter wheat is grown in European Russia. Total wheat area is estimated at 25.5 million hectares, down 0.5 million from last month and up 1.0 million from last year.



Total-wheat yield is forecast at a record 2.12 tons per hectare. Although the USDA does not estimate individual winter- and spring-wheat yields, data from the State Statistical Committee of Russia indicate that winter-wheat yields have been generally improving over the past ten years. (Yields plunged between 1990 and 1998 following the breakup of the Soviet Union and the loss of massive State subsidies for agriculture.) Furthermore, yields in recent years have rivaled or exceeded yields achieved during the peak “intensive technology” years of the Soviet era, when fertilizer and pesticide use was high. Although fertilizer application rates are substantially lower now than during Soviet times, yields have benefited from steady improvement in other areas of agricultural technology including improved wheat varieties, the increased use of certified planting seed, and increased efficiency of agricultural machinery.

Spring wheat sowing is typically nearing completion by early June, and area for 2008/09 is expected to remain fairly stable from last year. Although sub-surface moisture reserves are below normal in parts of the spring-wheat region (chiefly the Volga, Ural, and Siberian Districts), yields for spring wheat hinge chiefly on subsequent summer precipitation (*For more information, contact Mark Lindeman at 202-690-0143.*)

Ukraine: Wheat Output Forecast to Increase Over 50 Percent from Last Year

The USDA estimates Ukraine wheat production for 2008/09 at 21.0 million tons, up 1.0 million or 5 percent from last month and up 7.1 million or 51 percent from last year. Area is estimated at 6.8 million hectares. The sown area of winter wheat, which typically accounts for 90 to 95 percent of total wheat area, rose by about 15 percent from last season, and winter losses were extremely low. Crops have benefited from generally favorable weather, including generous and well-distributed precipitation, and analysis of satellite-derived vegetative indices indicates high potential yield for winter crops throughout central, southern, and eastern Ukraine. Wheat yield is

estimated at 3.09 tons per hectare – lower than the yields achieved during the late 1980’s with the help of heavy government subsidies, but matching some of the higher yields of recent years. The Ukraine wheat harvest typically begins around July 1 in the southern production region. *(For more information, contact Mark Lindeman at 202-690-0143.)*

China: Higher Rapeseed Area and Production for 2008/09

China’s 2008/09 rapeseed production is estimated at 11.0 million tons, up 0.6 million from last year’s revised estimate. The estimated yield of 1.83 tons per hectare is close to last year and slightly above the 5-year average. Area is estimated at 6.0 million hectares, up 0.3 million from last year. According to Chinese government and industry sources, farmers sharply increased winter rapeseed planted area in response to high prices in 2007 and government incentives after the disappointing 2007/08 crop.

The 2008/09 winter rapeseed crop was planted in October 2007. Record-breaking snowfall, heavy ice, and abnormally cold temperatures were reported in all major rapeseed growing provinces. A large number of fields were abandoned, and some crops were permanently damaged. Losses were heaviest in Guizhou, Yunnan, and Hubei provinces. However, the weather was mostly favorable during the flowering, pod fill and maturation stages, and higher than anticipated yields were reported in several provinces, offsetting the earlier losses. The winter rapeseed harvest is now complete. Clear and warm weather in May was ideal for harvesting in the Yangtze Valley, although scattered showers in Anhui and Jiangsu caused minor harvest delays and quality concerns. Spring rapeseed (about 5 percent of total output) has been planted in northern and northwest China. Growing conditions are generally favorable.

China’s National Bureau of Statistics (NBS) has lowered its rapeseed production estimates for 2006 and 2007 to 11.0 and 10.4 million tons, respectively. FAS adopted these estimates and adjusted rapeseed area to reflect NBS revisions to “total oilseed” area for both years. *(For more information, contact Paulette Sandene at 202-720-0133.)*

China: Higher Soybean Area and Yield in 2008/09

China’s 2008/09 soybean production is forecast at 16.0 million tons, up 2.5 million or 19 percent from last year. The estimated area of 9.4 million hectares is up 0.7 million or 8 percent from last year. According to Chinese government and industry sources, soybean area was expected to increase by more than 800,000 hectares in northeast China (Heilongjiang, Liaoning, and Jilin) in response to high soybean profits in 2007. The forecast yield of 1.70 tons per hectare is up almost 10 percent from last year’s drought-damaged crop and slightly above the 5-year average.

Unusually dry and warm weather in March created drought conditions in northeast China at the start of the planting season, but above-normal rainfall and mild temperatures in April and May erased the drought in most areas. Planting was completed nearly on schedule, but emergence was delayed in some areas by cool and wet conditions. The weather has been favorable on the North China Plain for both spring soybeans (planted in April) and second-crop soybeans (planted this month after the winter wheat harvest). Soil moisture is adequate to surplus in all major soybean regions as of May 31.

The National Bureau of Statistics (NBS) has lowered its 2006 and 2007 area and production estimates for “all beans” (of which soybeans make up 75 to 78 percent). FAS estimates for soybean area and production were adjusted accordingly. *(For more information, contact Paulette Sandene at 202-720-0133.)*

China: Favorable Weather Brings Record Wheat Yields

China’s 2008/09 wheat production is estimated at 114.0 million tons, up 5.0 million from last month and up 4.1 million from last year’s revised estimate. The estimated yield was raised to a record 4.87 tons per hectare due to continuing favorable weather. Area is estimated at 23.4 million hectares, up 0.2 million from last month and up 0.3 million from last year. The area revision was based on the latest provincial area data. At a recent major wheat conference in China, winter wheat production for the nine top provinces (accounting for about 85 percent of total output) was estimated at 99.35 million tons, up 5 percent (4.3 million tons) from last year. Total area was up 1.5 percent (286,000 hectares) from last year. Most provinces predicted record yields, ranging from 5.0 to 6.2 tons per hectare.

Above-normal rainfall and seasonable temperatures in April and May were reported in most of eastern China, creating very favorable conditions for flowering, filling, and maturing winter wheat. The weather from mid-May through early June was nearly ideal for harvesting, which is expected to conclude by June 20. Recent showers caused minor harvesting delays and quality concerns in Anhui, Jiangsu, and Shandong. The winter wheat crop in Sichuan and Gansu provinces was more than 90 percent harvested at the time of the May 12 earthquake, so production was not affected. However, subsequent heavy rainfall and damage to transportation, storage facilities and mills may cause higher than normal post-harvest losses this year. Spring wheat prospects are currently favorable. After a dry start to the spring wheat planting season in March, widespread rainfall in Northeast China, Inner Mongolia, and Northwest China has supported good emergence and early development.

The National Bureau of Statistics (NBS) raised its wheat production estimates for 2006 and 2007 to 108.5 million tons and 109.9 million tons, respectively. These changes were adopted by FAS. *(For more information, contact Paulette Sandene at 202-720-0133.)*

China: Record Corn Crop is Expected

China's 2008/09 corn production is forecast at a record 153.0 million tons, up 3.0 million or 2 percent from last month and up 1.2 million from last year's revised estimate. Corn area is estimated at 27.8 million hectares, unchanged from last month but down 0.2 million from last year. According to Chinese government and industry sources, farmers responded to high soybean profits in 2007 by shifting acreage from corn to soybeans. Planted area in Northeast China dropped by an estimated 500,000 to 800,000 hectares. Summer corn planting on the North China Plain has just begun, so total planted area is still uncertain. The 2008/09 forecast yield was raised to a record 5.5 tons per hectare to reflect favorable weather for planting and early crop development in May and early June.

Unusually dry and warm weather in March created drought conditions in Northeast China at the start of the planting season, but widespread rain in April and May erased the drought and raised soil moisture levels. Planting was completed by the end of May and the crop is reportedly emerging well. The weather has been favorably wet on the North China Plain for both spring corn (planted in April) and second-crop corn (planted this month after the winter wheat harvest). Soil moisture is adequate in all major corn regions as of May 31, with dryness reported only in Shanxi and northwest China. Heavy rain in southern China caused local flooding, but the impact on corn production is expected to be minor.

The National Bureau of Statistics (NBS) raised its corn production estimates for 2006 and 2007 to 151.6 million tons and 151.8 million tons, respectively. FAS adopted these changes and adjusted the 2006 corn area estimate to reflect revised NBS total grain data. *(For more information, contact Paulette Sandene at 202-720-0133.)*

Canadian: Corn Area Forecast Down in 2008/09

For 2008/09 corn area planted is forecast down 12% while soybean area planted is forecast to increase by 3%. Corn production is forecast to reach 10.0 million tons, down 14% from the previous year. Corn acres are down by almost one quarter in top corn producing provinces, Ontario and Quebec. Although crop prices are good for all crops, farmers switch from corn to other crops such as soybeans and winter wheat because of the lower input costs and crop rotation. Soybean production, Canada's second largest oilseed product, is forecast to increase to 3.06 million tons as compared to 2.7 million in 2007/08. *(For more information, contact Arnella Trent at 202-720-0881.)*

This report uses information from the Foreign Agricultural Service's (FAS) global network of agricultural attachés and counselors, official statistics of foreign governments and other foreign source materials, and the analysis of economic data and satellite imagery. Estimates of foreign area, yield, and production are from the International Production Assessment Division, FAS, and are reviewed by USDA's Inter-Agency Commodity Estimates Committee. Estimates of U.S. area, yield, and production are from USDA's National Agricultural Statistics Service. Numbers within the report may not add to totals because of rounding. This report reflects official USDA estimates released in the World Agricultural Supply and Demand Estimates (WASDE-459), June 10, 2008.

Printed copies are available from the National Technical Information Service. Download an order form at http://www.ntis.gov/products/specialty/usda/fas_a-g.asp, or call NTIS at 1-800-363-2068.

The FAS International Production Assessment Branch prepared this report. The next issue of World Agricultural Production will be released after 9:30 a.m. Eastern Time, July 11, 2008.

Conversion Table

Metric tons to bushels

Wheat, soybeans	=	MT * 36.7437
Corn, sorghum, rye	=	MT * 39.36825
Barley	=	MT * 45.929625
Oats	=	MT * 68.894438

Metric tons to 480-lb bales

Cotton	=	MT * 4.592917
--------	---	---------------

Metric tons to hundredweight

Rice	=	MT * 22.04622
------	---	---------------

Area & weight

1 hectare	=	2.471044 acres
1 kilogram	=	2.204622 pounds

For further information, contact:
U.S. Department of Agriculture
Foreign Agricultural Service
Office of Global Analysis
International Production Assessment Division
Ag Box 1045, Room 6541, South Building
Washington, DC 20250-1045
Telephone: (202) 720-0888 Fax: (202) 720-8880

GENERAL INFORMATION

Division Director (Acting)	Tom St. Clair	202-720-2974 tom.stclair@fas.usda.gov
Deputy Director	Tom St. Clair	202-720-2974 tom.stclair@fas.usda.gov
Remote Sensing Specialist	Brad Doorn	202-690-0131 doorn@fas.usda.gov
USDA Remote Sensing Advisor	Glenn Bethel	202-720-1280 bethel@fas.usda.gov
Program Analyst	Mary Jackson	202-720-0886 jacksonma@fas.usda.gov
Agricultural Economist	Paul Provance	202-720-0873 paul.provance@fas.usda.gov

COUNTRY- AND REGION-SPECIFIC INFORMATION

South America	Denise McWilliams	202-359-8286 denise.mcwilliams@fas.usda.gov
Europe and North Africa	Bryan Purcell	202-690-0138 bryan.purcell@usda.gov
FSU-12, Argentina	Mark Lindeman	202-690-0143 lindeman@fas.usda.gov
Canada, Mexico, Central America, Caribbean	Arnella Trent	202-720-0881 arnella.trent@fas.usda.gov
China, East Asia	Paulette Sandene	202-690-0133 sandene@fas.usda.gov
Other South America		
South Asia, Indonesia, Australia & New Zealand	Jim Crutchfield	202-690-0135 crutchfield@fas.usda.gov
Sub-Saharan Africa, Brazil	Curt Reynolds	202-690-0134 reynoldsc@fas.usda.gov
Middle East and South East Asia	Michael Shean	202-720-7366 shean@fas.usda.gov
Eastern United States	William Baker	202-690-0136 william.baker@fas.usda.gov
Western United States	Vacant	

Table 01 World Crop Production Summary
1000 Metric Tons

Commodity	World -	Total Foreign	North America			EU-27 -	Former Soviet		Asia (WAP)					South America		Selected Other			All Others
			United States	Canada -	Mexico -		Russia -	Ukraine -	China -	India -	Indonesia	Pakistan	Thailand	Argentina	Brazil -	Australia	South Africa	Turkey -	
---Million metric tons---																			
Wheat																			
2006/07	596.0	546.7	49.3	25.3	3.2	124.8	44.9	14.0	108.5	69.4	nr	21.3	nr	15.2	2.2	10.6	2.1	17.5	87.7
2007/08 prel.	610.8	554.5	56.2	20.1	3.5	119.5	49.4	13.9	109.9	75.8	nr	23.3	nr	16.0	3.8	13.1	1.8	15.5	88.9
2008/09 proj.																			
May	656.0	590.9	65.1	25.0	3.6	140.0	52.0	20.0	109.0	76.8	nr	21.5	nr	15.0	4.5	24.0	2.0	16.5	81.1
Jun	662.9	596.7	66.2	24.5	3.6	140.0	54.0	21.0	114.0	76.8	nr	21.5	nr	14.5	4.5	24.0	2.0	16.5	79.9
Coarse Grains																			
2006/07	988.5	708.4	280.1	23.1	29.1	138.3	30.2	19.2	159.1	32.5	6.7	3.6	3.9	27.5	53.2	6.6	7.8	10.9	156.6
2007/08 prel.	1,075.7	724.6	351.1	27.8	29.8	137.6	29.3	14.6	159.0	38.2	7.5	3.6	3.9	27.0	60.4	9.9	12.0	10.0	153.8
2008/09 proj.																			
May	1,070.6	745.5	325.2	25.0	30.0	149.4	31.6	19.7	158.5	35.4	7.8	3.6	4.0	29.9	59.9	12.2	12.0	10.6	155.8
Jun	1,067.6	752.3	315.3	25.0	30.0	149.2	33.6	22.2	160.2	35.4	7.8	3.6	4.0	30.0	59.9	12.2	12.0	10.3	156.9
Rice, Milled																			
2006/07	420.1	413.9	6.2	nr	0.2	1.7	0.4	0.1	127.2	93.4	35.3	5.2	18.3	0.7	7.7	0.1	nr	0.4	123.3
2007/08 prel.	427.7	421.3	6.3	nr	0.2	1.7	0.5	0.1	129.8	95.7	35.5	5.5	18.5	0.8	8.1	0.0	nr	0.4	124.6
2008/09 proj.																			
May	432.0	425.7	6.3	nr	0.2	1.7	0.5	0.1	130.9	96.0	36.3	5.6	18.8	0.9	8.5	0.2	nr	0.4	125.8
Jun	431.4	425.1	6.3	nr	0.2	1.6	0.5	0.1	130.6	96.0	36.3	5.6	18.8	0.9	8.5	0.2	nr	0.4	125.5
Total Grains																			
2006/07	2,004.6	1,669.0	335.7	48.4	32.6	264.8	75.5	33.2	394.8	195.2	42.0	30.1	22.1	43.4	63.1	17.3	9.9	28.9	367.6
2007/08 prel.	2,114.1	1,700.5	413.6	47.9	33.5	258.8	79.2	28.6	398.7	209.7	43.0	32.4	22.4	43.8	72.4	23.0	13.9	25.9	367.3
2008/09 proj.																			
May	2,158.7	1,762.1	396.6	50.0	33.7	291.1	84.1	39.7	398.4	208.2	44.0	30.7	22.8	45.8	72.9	36.4	14.0	27.6	362.7
Jun	2,161.9	1,774.1	387.7	49.5	33.7	290.8	88.1	43.2	404.8	208.2	44.0	30.7	22.8	45.4	72.9	36.4	14.0	27.3	362.3
Oilseeds																			
2006/07	403.3	306.7	96.6	12.6	0.6	24.3	8.1	6.8	54.3	29.9	7.9	5.3	0.6	53.2	62.0	1.0	0.6	2.3	37.2
2007/08 prel.	387.7	307.7	80.0	11.6	0.6	24.3	6.9	6.0	52.2	33.9	8.2	4.6	0.6	52.3	64.1	1.4	1.3	2.0	37.9
2008/09 proj.																			
Jun	419.3	326.3	93.0	12.6	0.6	26.7	7.9	8.1	55.8	34.7	9.0	5.2	0.6	53.6	67.0	1.8	1.3	1.9	39.3
Cotton																			
2006/07	122.1	100.5	21.6	nr	0.7	1.6	nr	nr	35.5	21.8	0.0	9.9	0.0	0.8	7.0	1.4	0.1	3.9	17.9
2007/08 prel.	120.0	100.8	19.2	nr	0.6	1.5	nr	nr	35.8	25.3	0.0	8.9	0.0	0.7	7.2	0.6	0.1	3.2	17.0
2008/09 proj.																			
Jun	116.4	101.9	14.5	nr	0.7	1.3	nr	nr	35.5	26.5	0.0	9.4	0.0	0.7	6.4	1.5	0.1	2.6	17.2

1/ Includes wheat, coarse grains, and rice (milled) shown above.

Table 02 Wheat Area, Yield, and Production
1000 Metric Tons

Country / Region	Area (Million hectares)				Yield (Metric tons per hectare)				Production (Million metric tons)				Change in Production			
	Prel. 2006/07	2007/08	2008/09 May	Proj. Jun	Prel. 2006/07	2007/08	2008/09 May	Proj. Jun	Prel. 2006/07	2007/08	2008/09 May	Proj. Jun	From last month MMT	Percent	From last year MMT	Percent
World	212.25	217.45	224.93	223.63	2.81	2.81	2.92	2.96	596.00	610.77	656.01	662.90	6.89	1.05	52.14	8.54
United States	18.94	20.64	22.77	22.77	2.60	2.72	2.86	2.91	49.32	56.25	65.10	66.18	1.08	1.67	9.94	17.67
Total Foreign	193.31	196.81	202.17	200.87	2.83	2.82	2.92	2.97	546.68	554.52	590.91	596.72	5.81	0.98	42.20	7.61
China, Peoples	22.96	23.10	23.20	23.40	4.72	4.76	4.70	4.87	108.47	109.86	109.00	114.00	5.00	4.59	4.14	3.77
South Asia																
India	26.40	28.20	27.70	27.70	2.63	2.69	2.77	2.77	69.35	75.81	76.78	76.78	0.00	0.00	0.97	1.28
Pakistan	8.36	8.40	8.20	8.20	2.55	2.77	2.62	2.62	21.28	23.30	21.50	21.50	0.00	0.00	-1.80	-7.73
Afghanistan	2.19	2.20	2.20	2.18	1.46	1.73	1.45	1.15	3.20	3.80	3.20	2.50	-0.70	-21.88	-1.30	-34.21
Former Soviet Union																
Russian Federation	23.70	24.50	26.00	25.50	1.89	2.02	2.00	2.12	44.90	49.40	52.00	54.00	2.00	3.85	4.60	9.31
Ukraine	5.50	5.95	6.80	6.80	2.55	2.34	2.94	3.09	14.00	13.90	20.00	21.00	1.00	5.00	7.10	51.08
Kazakhstan, Republic	12.40	12.75	13.00	13.00	1.09	1.30	1.08	1.08	13.50	16.60	14.00	14.00	0.00	0.00	-2.60	-15.66
Uzbekistan, Republic	1.30	1.30	1.30	1.30	4.50	4.77	4.62	4.62	5.85	6.20	6.00	6.00	0.00	0.00	-0.20	-3.23
EU-27																
France	5.25	5.23	5.46	5.48	6.74	6.27	6.96	7.03	35.36	32.83	38.00	38.50	0.50	1.32	5.67	17.27
Germany	3.12	3.01	3.19	3.19	7.20	6.96	7.49	7.49	22.43	20.93	23.90	23.90	0.00	0.00	2.97	14.21
United Kingdom	1.83	1.82	2.03	2.03	8.04	7.29	8.00	8.00	14.74	13.24	16.20	16.20	0.00	0.00	2.96	22.38
Poland	2.18	2.13	2.30	2.30	3.24	3.94	3.91	3.70	7.06	8.38	9.00	8.50	-0.50	-5.56	0.12	1.43
Spain	1.96	1.83	2.01	2.01	2.85	3.47	2.89	2.89	5.58	6.35	5.80	5.80	0.00	0.00	-0.55	-8.66
Italy	1.77	2.03	2.50	2.50	3.72	3.52	3.57	3.57	6.59	7.13	8.91	8.91	0.00	0.00	1.78	24.97
Denmark	0.65	0.68	0.67	0.67	7.23	6.63	7.16	7.16	4.70	4.49	4.80	4.80	0.00	0.00	0.31	6.90
Hungary	1.08	1.11	1.13	1.13	4.06	3.59	4.34	4.34	4.38	3.99	4.90	4.90	0.00	0.00	0.91	22.87
Romania	1.80	1.85	2.12	2.12	2.64	1.55	2.74	2.74	4.75	2.88	5.80	5.80	0.00	0.00	2.92	101.67
Bulgaria	0.92	1.04	1.03	1.03	3.45	2.17	3.41	3.41	3.18	2.26	3.50	3.50	0.00	0.00	1.24	54.87
Canada	9.68	8.64	10.00	10.00	2.61	2.32	2.50	2.45	25.27	20.05	25.00	24.50	-0.50	-2.00	4.45	22.19
Australia	11.62	12.30	13.50	13.50	0.92	1.07	1.78	1.78	10.64	13.10	24.00	24.00	0.00	0.00	10.90	83.21
Middle East																
Turkey	8.60	8.60	8.60	8.60	2.03	1.80	1.92	1.92	17.50	15.50	16.50	16.50	0.00	0.00	1.00	6.45
Iran	6.50	6.90	6.20	6.20	2.23	2.17	1.94	1.94	14.50	15.00	12.00	12.00	0.00	0.00	-3.00	-20.00
Syria	1.70	1.70	1.60	0.80	2.47	2.35	1.56	2.50	4.20	4.00	2.50	2.00	-0.50	-20.00	-2.00	-50.00
North Africa																
Egypt	1.29	1.29	1.29	1.29	6.43	6.43	6.43	6.43	8.27	8.28	8.30	8.30	0.00	0.00	0.03	0.30
Morocco	3.11	2.57	2.80	2.80	2.04	0.62	1.25	1.25	6.33	1.58	3.50	3.50	0.00	0.00	1.92	121.10
Argentina	5.29	5.60	5.30	5.10	2.88	2.86	2.83	2.84	15.20	16.00	15.00	14.50	-0.50	-3.33	-1.50	-9.38
Others	22.17	22.09	22.06	22.06	2.50	2.70	2.76	2.76	55.47	59.67	60.82	60.83	0.01	0.01	1.15	1.93

World and Selected Countries and Regions

6/10/2008 10:04:02 AM

Table 03 Total Coarse Grain Area, Yield, and Production
1000 Metric Tons

Country / Region	Area (Million hectares)				Yield (Metric tons per hectare)				Production (Million metric tons)				Change in Production			
	Prel.		2008/09 Proj.		Prel.		2008/09 Proj.		Prel.		2008/09 Proj.		From last month		From last year	
	2006/07	2007/08	May	Jun	2006/07	2007/08	May	Jun	2006/07	2007/08	May	Jun	MMT	Percent	MMT	Percent
World	305.49	316.94	312.97	313.44	3.24	3.39	3.42	3.41	988.51	1,075.6	1,070.6	1,067.56	-3.08	-0.29	-8.13	-0.76
United States	32.53	39.92	36.58	36.58	8.61	8.79	8.89	8.62	280.11	351.06	325.16	315.25	-9.91	-3.05	-35.81	-10.20
Total Foreign	272.96	277.02	276.39	276.86	2.60	2.62	2.70	2.72	708.40	724.63	745.48	752.30	6.83	0.92	27.67	3.82
China, Peoples	30.76	30.90	30.68	30.66	5.17	5.15	5.17	5.23	159.10	159.02	158.50	160.20	1.70	1.07	1.19	0.75
South America																
Brazil	15.15	15.79	16.34	16.34	3.51	3.83	3.66	3.66	53.18	60.44	59.86	59.86	0.00	0.00	-0.59	-0.97
Argentina	4.07	4.65	4.69	4.72	6.77	5.81	6.38	6.36	27.54	27.02	29.92	30.02	0.10	0.33	3.00	11.10
EU-27																
France	3.75	3.71	3.75	3.71	6.98	7.12	7.01	7.09	26.13	26.38	26.31	26.28	-0.03	-0.11	-0.10	-0.38
Germany	3.59	3.58	3.72	3.68	5.87	5.50	6.14	6.14	21.05	19.66	22.80	22.60	-0.20	-0.88	2.94	14.97
Poland	6.13	6.18	5.93	5.93	2.39	3.07	3.14	3.14	14.66	18.96	18.60	18.60	0.00	0.00	-0.36	-1.90
Spain	4.24	4.28	4.39	4.39	3.07	3.97	3.13	3.13	13.00	16.98	13.74	13.74	0.00	0.00	-3.24	-19.10
Italy	1.60	1.54	1.54	1.54	7.09	7.31	7.60	7.60	11.32	11.26	11.69	11.69	0.00	0.00	0.42	3.74
Hungary	1.75	1.67	1.77	1.77	5.66	3.38	5.54	5.54	9.87	5.64	9.79	9.79	0.00	0.00	4.14	73.40
United Kingdom	1.10	1.13	1.23	1.23	6.31	6.04	6.24	6.24	6.96	6.83	7.66	7.66	0.00	0.00	0.83	12.22
Romania	3.11	3.15	3.30	3.30	3.10	1.50	2.83	2.83	9.64	4.74	9.35	9.35	0.00	0.00	4.61	97.30
Former Soviet Union																
Russian Federation	17.10	17.40	17.30	17.70	1.77	1.69	1.83	1.90	30.20	29.33	31.60	33.60	2.00	6.33	4.28	14.58
Ukraine	7.82	6.79	7.05	7.55	2.45	2.15	2.79	2.94	19.18	14.59	19.67	22.17	2.50	12.71	7.59	52.01
Kazakhstan, Republic	2.17	2.18	2.18	2.18	1.12	1.38	1.15	1.15	2.42	3.02	2.52	2.52	0.00	0.00	-0.50	-16.58
Africa																
Nigeria	17.95	17.25	17.95	17.95	1.45	1.39	1.44	1.44	26.00	24.00	25.80	25.80	0.00	0.00	1.80	7.50
South Africa, Republic	3.78	4.08	4.28	4.28	2.05	2.94	2.80	2.80	7.76	12.01	11.98	11.98	0.00	0.00	-0.03	-0.25
Ethiopia	5.85	5.96	5.98	5.98	1.89	2.00	1.86	1.86	11.08	11.93	11.10	11.10	0.00	0.00	-0.83	-6.96
Egypt	0.93	0.93	0.94	0.94	7.78	7.78	7.74	7.74	7.21	7.23	7.24	7.24	0.00	0.00	0.00	0.01
India	27.31	28.27	27.75	27.75	1.19	1.35	1.28	1.28	32.54	38.21	35.40	35.40	0.00	0.00	-2.81	-7.35
Southeast Asia																
Indonesia	3.30	3.56	3.70	3.70	2.03	2.11	2.09	2.09	6.70	7.50	7.75	7.75	0.00	0.00	0.25	3.33
Philippines	2.61	2.65	2.65	2.70	2.39	2.74	2.49	2.70	6.23	7.25	6.60	7.30	0.70	10.61	0.05	0.69
Thailand	1.03	1.04	1.05	1.05	3.74	3.79	3.85	3.85	3.87	3.92	4.02	4.02	0.00	0.00	0.10	2.55
Mexico	9.38	9.56	9.66	9.66	3.11	3.12	3.10	3.10	29.14	29.78	29.98	29.98	0.00	0.00	0.20	0.67
Canada	6.12	7.39	6.42	6.42	3.78	3.77	3.90	3.90	23.15	27.84	25.02	25.02	0.00	0.00	-2.82	-10.13
Australia	5.83	6.19	6.34	6.34	1.13	1.60	1.92	1.92	6.58	9.91	12.21	12.21	0.00	0.00	2.30	23.23
Turkey	4.43	4.46	4.56	4.36	2.47	2.25	2.34	2.38	10.95	10.05	10.65	10.35	-0.30	-2.82	0.30	2.99
Others	82.15	82.75	81.27	81.07	1.62	1.58	1.67	1.68	132.96	131.14	135.74	136.10	0.36	0.26	4.95	3.78

World and Selected Countries and Regions

6/10/2008 10:04:25 AM

Table 04 Corn Area, Yield, and Production
1000 Metric Tons

Country / Region	Area (Million hectares)				Yield (Metric tons per hectare)				Production (Million metric tons)				Change in Production			
	2006/07	Prel. 2007/08	2008/09 May	Proj. Jun	2006/07	Prel. 2007/08	2008/09 May	Proj. Jun	2006/07	Prel. 2007/08	2008/09 May	Proj. Jun	From last month MMT	Percent	From last year MMT	Percent
World	149.29	158.68	157.35	158.33	4.78	4.98	4.94	4.90	713.13	789.81	777.56	775.26	-2.30	-0.30	-14.55	-1.84
United States	28.59	35.02	31.89	31.89	9.36	9.48	9.66	9.35	267.60	332.09	307.99	298.08	-9.91	-3.22	-34.01	-10.24
Total Foreign	120.70	123.66	125.46	126.44	3.69	3.70	3.74	3.77	445.53	457.72	469.57	477.18	7.61	1.62	19.46	4.25
China, Peoples	27.90	28.00	27.80	27.80	5.43	5.42	5.40	5.50	151.60	151.83	150.00	153.00	3.00	2.00	1.17	0.77
South America																
Brazil	14.00	14.60	15.00	15.00	3.64	3.97	3.80	3.80	51.00	58.00	57.00	57.00	0.00	0.00	-1.00	-1.72
Argentina	2.80	3.10	3.10	3.10	8.04	6.94	7.58	7.58	22.50	21.50	23.50	23.50	0.00	0.00	2.00	9.30
Mexico	7.38	7.40	7.45	7.45	3.03	3.04	3.09	3.09	22.35	22.50	23.00	23.00	0.00	0.00	0.50	2.22
EU-27																
France	1.47	1.45	1.40	1.40	8.72	9.87	8.90	8.90	12.78	14.30	12.46	12.46	0.00	0.00	-1.84	-12.87
Italy	1.06	1.01	1.06	1.06	8.87	9.41	9.43	9.43	9.40	9.50	10.00	10.00	0.00	0.00	0.50	5.26
Hungary	1.22	1.12	1.20	1.20	6.64	3.60	6.67	6.67	8.10	4.03	8.00	8.00	0.00	0.00	3.97	98.51
Romania	2.56	2.55	2.67	2.67	3.32	1.54	3.00	3.00	8.50	3.93	8.02	8.02	0.00	0.00	4.10	104.28
Poland	0.31	0.26	0.32	0.32	4.08	6.49	5.47	5.47	1.26	1.70	1.75	1.75	0.00	0.00	0.05	2.94
India	7.80	8.30	8.40	8.40	1.94	2.23	2.08	2.08	15.10	18.54	17.50	17.50	0.00	0.00	-1.04	-5.61
Canada	1.06	1.37	1.20	1.20	8.47	8.50	8.33	8.33	8.99	11.65	10.00	10.00	0.00	0.00	-1.65	-14.16
Indonesia	3.30	3.56	3.70	3.70	2.03	2.11	2.09	2.09	6.70	7.50	7.75	7.75	0.00	0.00	0.25	3.33
Ukraine	1.70	1.90	1.90	2.40	3.76	3.89	4.21	4.17	6.40	7.40	8.00	10.00	2.00	25.00	2.60	35.14
Serbia	1.17	1.21	1.30	1.30	5.48	3.36	5.00	5.00	6.42	4.05	6.50	6.50	0.00	0.00	2.45	60.34
Egypt	0.72	0.72	0.73	0.73	8.58	8.58	8.52	8.52	6.15	6.17	6.18	6.18	0.00	0.00	0.00	0.02
Philippines	2.61	2.65	2.65	2.70	2.39	2.74	2.49	2.70	6.23	7.25	6.60	7.30	0.70	10.61	0.05	0.69
Vietnam	1.07	1.15	1.20	1.20	3.96	4.00	4.17	4.17	4.25	4.60	5.00	5.00	0.00	0.00	0.40	8.70
Thailand	1.00	1.00	1.01	1.01	3.80	3.85	3.91	3.91	3.80	3.85	3.95	3.95	0.00	0.00	0.10	2.60
Russian Federation	1.00	1.30	1.40	1.80	3.60	3.04	3.79	3.78	3.60	3.95	5.30	6.80	1.50	28.30	2.85	72.15
Sub-Saharan Africa																
South Africa, Republic	2.90	3.20	3.40	3.40	2.52	3.59	3.38	3.38	7.30	11.50	11.50	11.50	0.00	0.00	0.00	0.00
Nigeria	4.70	4.00	4.70	4.70	1.66	1.63	1.66	1.66	7.80	6.50	7.80	7.80	0.00	0.00	1.30	20.00
Ethiopia	2.18	2.32	2.30	2.30	2.30	2.41	2.22	2.22	5.00	5.60	5.10	5.10	0.00	0.00	-0.50	-8.93
Zimbabwe	1.25	1.30	1.30	1.30	0.56	0.37	0.65	0.65	0.70	0.48	0.85	0.85	0.00	0.00	0.38	78.95
Turkey	0.43	0.45	0.55	0.55	6.59	6.44	6.36	6.36	2.80	2.90	3.50	3.50	0.00	0.00	0.60	20.69
Others	29.14	29.75	29.72	29.75	2.29	2.30	2.37	2.38	66.81	68.49	70.31	70.72	0.41	0.58	2.23	3.25

World and Selected Countries and Regions

6/10/2008 10:04:02 AM

Table 05 Barley Area, Yield, and Production
1000 Metric Tons

Country / Region	Area (Million hectares)				Yield (Metric tons per hectare)				Production (Million metric tons)				Change in Production			
	Prel. 2006/07	2007/08	2008/09 Proj. May	2008/09 Proj. Jun	Prel. 2006/07	2007/08	2008/09 Proj. May	2008/09 Proj. Jun	Prel. 2006/07	2007/08	2008/09 Proj. May	2008/09 Proj. Jun	From last month MMT	Percent	From last year MMT	Percent
World	57.48	57.60	55.68	55.27	2.39	2.32	2.55	2.57	137.39	133.86	141.84	142.04	0.20	0.14	8.19	6.12
United States	1.19	1.42	1.45	1.45	3.29	3.25	3.52	3.52	3.92	4.61	5.12	5.12	0.00	0.00	0.51	10.95
Total Foreign	56.28	56.18	54.22	53.81	2.37	2.30	2.52	2.54	133.46	129.24	136.73	136.93	0.20	0.15	7.68	5.94
Russian Federation	10.00	9.80	9.60	9.60	1.81	1.60	1.77	1.82	18.10	15.65	17.00	17.50	0.50	2.94	1.85	11.82
EU-27																
Germany	2.03	1.93	1.96	1.96	5.91	5.42	6.05	6.05	11.97	10.48	11.85	11.85	0.00	0.00	1.37	13.08
France	1.67	1.70	1.74	1.75	6.24	5.57	6.30	6.26	10.40	9.46	10.96	10.96	0.00	0.00	1.50	15.91
Spain	3.23	3.22	3.38	3.38	2.58	3.60	2.81	2.81	8.32	11.60	9.50	9.50	0.00	0.00	-2.10	-18.09
United Kingdom	0.88	0.90	0.99	0.99	5.95	5.66	5.86	5.86	5.24	5.08	5.80	5.80	0.00	0.00	0.72	14.20
Denmark	0.67	0.63	0.65	0.65	4.83	4.91	5.00	5.00	3.25	3.09	3.25	3.25	0.00	0.00	0.17	5.35
Poland	1.22	1.23	1.20	1.20	2.59	3.30	3.08	3.08	3.16	4.07	3.70	3.70	0.00	0.00	-0.37	-9.09
Czech Republic	0.53	0.50	0.50	0.50	3.59	3.80	4.10	4.10	1.90	1.89	2.05	2.05	0.00	0.00	0.16	8.24
Finland	0.56	0.53	0.56	0.56	3.50	3.72	3.57	3.57	1.97	1.98	2.00	2.00	0.00	0.00	0.02	0.81
Sweden	0.31	0.32	0.33	0.33	3.63	4.48	4.15	4.15	1.11	1.44	1.35	1.35	0.00	0.00	-0.09	-6.18
Italy	0.33	0.34	0.30	0.30	3.89	3.53	3.90	3.90	1.30	1.20	1.15	1.15	0.00	0.00	-0.05	-4.01
Hungary	0.29	0.32	0.33	0.33	3.68	3.21	3.45	3.45	1.08	1.04	1.13	1.13	0.00	0.00	0.09	8.55
Austria	0.21	0.19	0.19	0.19	4.43	4.20	4.29	4.29	0.91	0.81	0.82	0.82	0.00	0.00	0.00	0.49
Ukraine	5.20	4.10	4.20	4.20	2.18	1.46	2.38	2.50	11.35	6.00	10.00	10.50	0.50	5.00	4.50	75.00
Canada	3.22	4.00	3.50	3.50	2.97	2.75	3.00	3.00	9.57	11.00	10.50	10.50	0.00	0.00	-0.50	-4.55
Australia	4.10	4.35	4.50	4.50	1.02	1.36	1.89	1.89	4.18	5.90	8.50	8.50	0.00	0.00	2.60	44.07
Turkey	3.60	3.60	3.60	3.40	2.08	1.81	1.81	1.82	7.50	6.50	6.50	6.20	-0.30	-4.62	-0.30	-4.62
China, Peoples	0.92	0.95	0.98	0.96	3.61	3.35	3.78	3.33	3.30	3.19	3.70	3.20	-0.50	-13.51	0.02	0.47
Iran	1.70	1.70	1.30	1.30	1.76	1.76	1.54	1.54	3.00	3.00	2.00	2.00	0.00	0.00	-1.00	-33.33
Morocco	2.19	1.99	2.05	2.05	1.16	0.38	0.59	0.59	2.54	0.76	1.20	1.20	0.00	0.00	0.44	57.27
Kazakhstan,	1.80	1.80	1.80	1.80	1.06	1.39	1.11	1.11	1.90	2.50	2.00	2.00	0.00	0.00	-0.50	-20.00
Ethiopia	1.33	1.33	1.30	1.30	1.60	1.89	1.62	1.62	2.13	2.50	2.10	2.10	0.00	0.00	-0.40	-16.00
Belarus	0.55	0.65	0.55	0.55	2.45	2.62	2.55	2.55	1.35	1.70	1.40	1.40	0.00	0.00	-0.30	-17.65
India	0.70	0.77	0.75	0.75	1.74	1.73	1.87	1.87	1.22	1.33	1.40	1.40	0.00	0.00	0.07	5.26
Argentina	0.34	0.44	0.48	0.48	3.76	3.35	3.44	3.44	1.27	1.46	1.65	1.65	0.00	0.00	0.19	13.01
Mexico	0.35	0.35	0.35	0.35	2.57	2.57	2.57	2.57	0.90	0.90	0.90	0.90	0.00	0.00	0.00	0.00
Iraq	1.41	1.44	0.50	0.50	0.89	0.74	0.90	0.90	1.25	1.06	0.45	0.45	0.00	0.00	-0.61	-57.55
Algeria	0.70	0.70	0.70	0.70	1.00	1.00	1.00	1.00	0.70	0.70	0.70	0.70	0.00	0.00	0.00	0.00
Others	6.27	6.39	5.95	5.75	2.01	2.03	2.21	2.29	12.61	12.96	13.17	13.17	0.00	0.00	0.21	1.61

World and Selected Countries and Regions

6/10/2008 10:04:03 AM

Table 06 Oats Area, Yield, and Production
1000 Metric Tons

Country / Region	Area (Million hectares)				Yield (Metric tons per hectare)				Production (Million metric tons)				Change in Production			
	Prel.		2008/09 Proj.		Prel.		2008/09 Proj.		Prel.		2008/09 Proj.		From last month		From last year	
	2006/07	2007/08	May	Jun	2006/07	2007/08	May	Jun	2006/07	2007/08	May	Jun	MMT	Percent	MMT	Percent
World	12.99	13.29	12.70	12.71	1.78	1.93	1.97	1.98	23.15	25.64	25.00	25.10	0.10	0.40	-0.54	-2.11
United States	0.63	0.61	0.57	0.57	2.14	2.18	2.30	2.30	1.36	1.33	1.31	1.31	0.00	0.00	-0.02	-1.80
Total Foreign	12.36	12.68	12.13	12.14	1.76	1.92	1.95	1.96	21.79	24.31	23.69	23.79	0.10	0.42	-0.52	-2.13
Russian Federation	3.60	3.70	3.40	3.40	1.36	1.46	1.41	1.41	4.90	5.40	4.80	4.80	0.00	0.00	-0.60	-11.11
Canada	1.54	1.81	1.50	1.50	2.51	2.60	2.67	2.67	3.85	4.70	4.00	4.00	0.00	0.00	-0.70	-14.89
EU-27																
Poland	0.54	0.59	0.56	0.56	1.92	2.55	2.59	2.59	1.04	1.49	1.45	1.45	0.00	0.00	-0.04	-2.68
Finland	0.35	0.35	0.36	0.36	2.92	3.52	3.33	3.33	1.03	1.22	1.20	1.20	0.00	0.00	-0.02	-1.80
Spain	0.50	0.53	0.54	0.54	1.84	2.47	2.03	2.03	0.92	1.30	1.10	1.10	0.00	0.00	-0.20	-15.51
Germany	0.18	0.18	0.19	0.19	4.51	4.13	4.47	4.47	0.83	0.72	0.85	0.85	0.00	0.00	0.13	17.57
Sweden	0.20	0.20	0.23	0.23	3.18	4.37	3.91	3.91	0.64	0.89	0.90	0.90	0.00	0.00	0.01	0.90
United Kingdom	0.12	0.13	0.14	0.14	6.02	5.48	6.00	6.00	0.73	0.71	0.81	0.81	0.00	0.00	0.10	13.76
France	0.11	0.11	0.11	0.11	4.44	3.82	4.57	4.57	0.48	0.41	0.48	0.48	0.00	0.00	0.08	18.52
Italy	0.16	0.16	0.15	0.15	2.45	2.33	2.33	2.33	0.40	0.36	0.35	0.35	0.00	0.00	-0.01	-3.05
Denmark	0.07	0.06	0.07	0.07	3.97	4.73	4.69	4.69	0.27	0.30	0.31	0.31	0.00	0.00	0.01	2.35
Romania	0.20	0.21	0.21	0.21	1.71	1.19	1.64	1.64	0.35	0.25	0.35	0.35	0.00	0.00	0.10	38.34
Czech Republic	0.06	0.06	0.06	0.06	2.67	2.69	3.25	3.25	0.16	0.16	0.18	0.18	0.00	0.00	0.02	14.47
Hungary	0.06	0.06	0.06	0.06	2.56	2.07	2.42	2.42	0.15	0.12	0.15	0.15	0.00	0.00	0.02	18.85
Austria	0.04	0.03	0.03	0.03	3.74	3.00	3.50	3.50	0.13	0.09	0.11	0.11	0.00	0.00	0.01	12.90
Ireland	0.02	0.02	0.02	0.02	7.35	7.94	7.94	7.94	0.13	0.14	0.14	0.14	0.00	0.00	0.00	0.00
Lithuania	0.06	0.09	0.06	0.06	1.07	2.09	2.03	2.03	0.06	0.18	0.13	0.13	0.00	0.00	-0.05	-27.78
Australia	0.98	0.90	0.90	0.90	0.75	0.94	1.44	1.44	0.73	0.85	1.30	1.30	0.00	0.00	0.45	52.94
Ukraine	0.44	0.35	0.40	0.40	1.59	1.57	1.75	1.75	0.70	0.55	0.70	0.70	0.00	0.00	0.15	27.27
China, Peoples	0.50	0.50	0.50	0.50	1.20	1.20	1.20	1.20	0.60	0.60	0.60	0.60	0.00	0.00	0.00	0.00
Belarus	0.25	0.25	0.25	0.25	2.20	2.40	2.40	2.40	0.55	0.60	0.60	0.60	0.00	0.00	0.00	0.00
Brazil	0.35	0.35	0.35	0.35	1.36	1.36	1.36	1.36	0.48	0.48	0.48	0.48	0.00	0.00	0.00	0.00
Argentina	0.25	0.26	0.25	0.26	1.60	1.92	1.60	1.96	0.40	0.49	0.40	0.50	0.10	25.00	0.01	2.04
Chile	0.08	0.08	0.08	0.08	4.75	4.75	4.75	4.75	0.38	0.38	0.38	0.38	0.00	0.00	0.00	0.00
Norway	0.09	0.09	0.09	0.09	4.19	4.19	4.19	4.19	0.36	0.36	0.36	0.36	0.00	0.00	0.00	0.00
Turkey	0.16	0.16	0.16	0.16	1.87	1.87	1.87	1.87	0.29	0.29	0.29	0.29	0.00	0.00	0.00	0.00
Kazakhstan,	0.14	0.16	0.16	0.16	1.00	1.00	1.00	1.00	0.14	0.16	0.16	0.16	0.00	0.00	0.00	0.00
Serbia	0.07	0.07	0.07	0.07	1.85	1.85	1.85	1.85	0.12	0.12	0.12	0.12	0.00	0.00	0.00	0.00
Others	1.26	1.26	1.26	1.26	0.79	0.78	0.81	0.81	0.99	0.99	1.02	1.02	0.00	0.00	0.03	2.83

World and Selected Countries and Regions

6/10/2008 10:04:07 AM

Table 07 Rye Area, Yield, and Production
1000 Metric Tons

Country / Region	Area (Million hectares)				Yield (Metric tons per hectare)				Production (Million metric tons)				Change in Production			
	Prel. 2006/07	2007/08	2008/09 Proj. May	2008/09 Proj. Jun	Prel. 2006/07	2007/08	2008/09 Proj. May	2008/09 Proj. Jun	Prel. 2006/07	2007/08	2008/09 Proj. May	2008/09 Proj. Jun	From last month MMT	Percent	From last year MMT	Percent
World	5.69	6.23	6.63	6.59	2.18	2.31	2.45	2.43	12.38	14.38	16.22	16.02	-0.20	-1.23	1.64	11.39
United States	0.11	0.12	0.12	0.12	1.65	1.72	1.70	1.70	0.18	0.20	0.21	0.21	0.00	0.00	0.01	2.99
Total Foreign	5.58	6.11	6.51	6.47	2.19	2.32	2.46	2.44	12.20	14.18	16.01	15.81	-0.20	-1.25	1.63	11.51
EU-27																
Poland	1.32	1.32	1.35	1.35	1.99	2.42	2.59	2.59	2.62	3.20	3.50	3.50	0.00	0.00	0.30	9.38
Germany	0.54	0.67	0.75	0.71	4.91	4.02	5.51	5.51	2.64	2.71	4.13	3.93	-0.20	-4.84	1.22	44.91
Spain	0.10	0.11	0.11	0.11	1.61	2.33	1.75	1.75	0.16	0.26	0.20	0.20	0.00	0.00	-0.06	-22.78
Lithuania	0.05	0.07	0.08	0.08	1.76	2.40	2.38	2.38	0.09	0.18	0.18	0.18	0.00	0.00	0.01	3.43
Latvia	0.04	0.06	0.05	0.05	2.72	3.12	2.65	2.65	0.12	0.18	0.14	0.14	0.00	0.00	-0.04	-20.99
France	0.03	0.03	0.03	0.03	4.65	4.37	4.50	4.50	0.12	0.12	0.12	0.12	0.00	0.00	0.00	-0.85
Denmark	0.03	0.03	0.02	0.02	4.64	4.93	4.75	4.75	0.13	0.14	0.10	0.10	0.00	0.00	-0.04	-31.16
Czech Republic	0.02	0.04	0.04	0.04	3.41	4.68	3.81	3.81	0.08	0.18	0.16	0.16	0.00	0.00	-0.02	-10.11
Austria	0.03	0.05	0.05	0.05	3.48	4.00	3.96	3.96	0.09	0.19	0.20	0.20	0.00	0.00	0.01	5.32
Sweden	0.02	0.03	0.03	0.03	4.92	5.52	5.00	5.00	0.12	0.14	0.15	0.15	0.00	0.00	0.01	8.70
Hungary	0.04	0.04	0.04	0.04	2.54	1.97	2.16	2.16	0.10	0.08	0.10	0.10	0.00	0.00	0.02	23.38
Slovakia	0.01	0.02	0.02	0.02	2.38	2.67	2.81	2.81	0.03	0.06	0.05	0.05	0.00	0.00	-0.01	-19.64
Finland	0.02	0.03	0.04	0.04	2.32	2.72	2.29	2.29	0.05	0.09	0.08	0.08	0.00	0.00	-0.01	-8.05
United Kingdom	0.01	0.01	0.01	0.01	6.14	6.00	6.67	6.67	0.04	0.04	0.04	0.04	0.00	0.00	0.00	11.11
Romania	0.02	0.01	0.01	0.01	1.94	1.69	2.14	2.14	0.03	0.02	0.03	0.03	0.00	0.00	0.01	36.36
Greece	0.01	0.02	0.02	0.02	1.79	1.87	1.81	1.81	0.03	0.03	0.03	0.03	0.00	0.00	0.00	3.57
Portugal	0.02	0.02	0.02	0.02	1.04	0.91	0.95	0.95	0.02	0.02	0.02	0.02	0.00	0.00	0.00	0.00
Russian Federation	1.80	2.10	2.30	2.30	1.67	1.86	1.74	1.74	3.00	3.90	4.00	4.00	0.00	0.00	0.10	2.56
Belarus	0.55	0.60	0.57	0.57	2.18	2.17	1.93	1.93	1.20	1.30	1.10	1.10	0.00	0.00	-0.20	-15.38
Ukraine	0.36	0.35	0.45	0.45	1.67	1.57	1.89	1.89	0.60	0.55	0.85	0.85	0.00	0.00	0.30	54.55
Canada	0.16	0.11	0.12	0.12	2.34	2.09	2.17	2.17	0.38	0.23	0.26	0.26	0.00	0.00	0.03	13.04
Turkey	0.15	0.15	0.15	0.15	1.60	1.60	1.60	1.60	0.24	0.24	0.24	0.24	0.00	0.00	0.00	0.00
Argentina	0.05	0.05	0.05	0.05	1.15	1.15	1.15	1.15	0.06	0.06	0.06	0.06	0.00	0.00	0.00	0.00
Kazakhstan,	0.07	0.07	0.07	0.07	0.71	0.71	0.71	0.71	0.05	0.05	0.05	0.05	0.00	0.00	0.00	0.00
Australia	0.04	0.04	0.04	0.04	0.57	0.57	0.57	0.57	0.02	0.02	0.02	0.02	0.00	0.00	0.00	0.00
Switzerland	0.00	0.00	0.00	0.00	6.67	6.67	6.67	6.67	0.02	0.02	0.02	0.02	0.00	0.00	0.00	0.00
Others	0.08	0.09	0.10	0.10	1.87	2.18	2.08	2.08	0.16	0.20	0.20	0.20	0.00	0.00	0.00	1.01

World and Selected Countries and Regions

6/10/2008 10:04:07 AM

Table 08 Sorghum Area, Yield, and Production
1000 Metric Tons

Country / Region	Area (Million hectares)				Yield (Metric tons per hectare)				Production (Million metric tons)				Change in Production			
	Prel. 2006/07	2007/08	2008/09 May	Proj. Jun	Prel. 2006/07	2007/08	2008/09 May	Proj. Jun	Prel. 2006/07	2007/08	2008/09 May	Proj. Jun	From last month MMT	Percent	From last year MMT	Percent
World	39.44	40.39	40.13	40.11	1.45	1.59	1.56	1.54	57.04	64.14	62.57	61.89	-0.68	-1.09	-2.26	-3.52
United States	2.00	2.75	2.55	2.55	3.53	4.66	4.14	4.14	7.05	12.83	10.54	10.54	0.00	0.00	-2.29	-17.82
Total Foreign	37.44	37.63	37.58	37.56	1.34	1.36	1.38	1.37	49.99	51.32	52.03	51.35	-0.68	-1.31	0.03	0.06
Sub-Saharan Africa																
Nigeria	7.40	7.40	7.40	7.40	1.42	1.35	1.42	1.42	10.50	10.00	10.50	10.50	0.00	0.00	0.50	5.00
Sudan	6.75	6.60	6.60	6.60	0.77	0.68	0.71	0.71	5.20	4.50	4.70	4.70	0.00	0.00	0.20	4.44
Ethiopia	1.88	1.84	1.88	1.88	1.77	1.76	1.76	1.76	3.33	3.23	3.30	3.30	0.00	0.00	0.07	2.17
Burkina	1.45	1.45	1.45	1.45	1.24	1.24	1.24	1.24	1.80	1.80	1.80	1.80	0.00	0.00	0.00	0.00
Tanzania, United	0.89	0.90	0.90	0.90	0.96	1.00	1.00	1.00	0.85	0.90	0.90	0.90	0.00	0.00	0.00	0.00
Niger	1.50	1.50	1.50	1.50	0.53	0.53	0.53	0.53	0.80	0.80	0.80	0.80	0.00	0.00	0.00	0.00
Uganda	0.31	0.31	0.31	0.31	1.58	1.58	1.58	1.58	0.49	0.49	0.49	0.49	0.00	0.00	0.00	0.00
Mozambique	0.50	0.50	0.50	0.50	0.70	0.70	0.70	0.70	0.35	0.35	0.35	0.35	0.00	0.00	0.00	0.00
Ghana	0.34	0.34	0.34	0.34	1.18	1.03	1.03	1.03	0.40	0.35	0.35	0.35	0.00	0.00	0.00	0.00
South Africa, Republic	0.07	0.09	0.09	0.09	2.51	2.89	2.56	2.56	0.18	0.26	0.23	0.23	0.00	0.00	-0.03	-11.54
South Asia																
India	8.51	8.40	8.10	8.10	0.84	0.92	0.86	0.86	7.15	7.73	7.00	7.00	0.00	0.00	-0.73	-9.44
Pakistan	0.26	0.25	0.24	0.24	0.61	0.60	0.60	0.60	0.16	0.15	0.15	0.15	0.00	0.00	-0.01	-3.97
Mexico	1.60	1.75	1.80	1.80	3.64	3.60	3.33	3.33	5.81	6.30	6.00	6.00	0.00	0.00	-0.30	-4.76
China, Peoples	0.57	0.55	0.50	0.50	3.53	3.45	4.80	3.60	2.00	1.90	2.40	1.80	-0.60	-25.00	-0.10	-5.26
Australia	0.64	0.80	0.80	0.80	2.15	3.38	2.50	2.50	1.37	2.70	2.00	2.00	0.00	0.00	-0.70	-25.93
Egypt	0.16	0.16	0.16	0.16	5.63	5.63	5.63	5.63	0.90	0.90	0.90	0.90	0.00	0.00	0.00	0.00
EU-27																
France	0.06	0.05	0.06	0.05	5.56	6.10	5.50	6.38	0.31	0.31	0.33	0.30	-0.03	-9.09	-0.01	-1.64
Italy	0.04	0.03	0.03	0.03	5.67	5.74	5.83	5.83	0.22	0.20	0.18	0.18	0.00	0.00	-0.02	-10.26
Others	4.54	4.71	4.93	4.92	1.80	1.80	1.96	1.95	8.19	8.46	9.66	9.61	-0.05	-0.54	1.15	13.61

World and Selected Countries and Regions

6/10/2008 10:04:03 AM

Table 09 Rice Area, Yield, and Production
1000 Metric Tons

Country / Region	Area (Million hectares)				Yield (Metric tons per hectare)				Production (Million metric tons)				Change in Production			
	Prel. 2006/07	2007/08	2008/09 May	Proj. Jun	Prel. 2006/07	2007/08	2008/09 May	Proj. Jun	Prel. 2006/07	2007/08	2008/09 May	Proj. Jun	From last month MMT	Percent	From last year MMT	Percent
World	153.76	154.42	155.68	155.22	4.07	4.13	4.14	4.14	420.14	427.66	432.05	431.41	-0.64	-0.15	3.75	0.88
United States	1.14	1.11	1.12	1.12	7.69	8.05	8.01	8.01	6.24	6.31	6.30	6.30	0.00	0.00	-0.01	-0.22
Total Foreign	152.61	153.31	154.57	154.10	4.04	4.10	4.11	4.11	413.90	421.34	425.75	425.11	-0.64	-0.15	3.77	0.89
East Asia																
China, Peoples	29.30	29.60	29.80	29.75	6.20	6.27	6.28	6.27	127.20	129.84	130.90	130.55	-0.35	-0.27	0.71	0.55
Japan	1.69	1.67	1.65	1.65	6.34	6.51	6.58	6.58	7.79	7.93	7.90	7.90	0.00	0.00	-0.03	-0.38
Korea, Republic of	0.96	0.95	0.94	0.94	6.62	6.28	6.45	6.45	4.68	4.41	4.50	4.50	0.00	0.00	0.09	2.09
Korea, Democratic	0.60	0.60	0.59	0.59	4.89	3.94	4.62	4.62	1.90	1.53	1.77	1.77	0.00	0.00	0.24	15.91
South Asia																
India	44.00	44.00	44.50	44.50	3.18	3.26	3.24	3.24	93.35	95.68	96.00	96.00	0.00	0.00	0.32	0.33
Bangladesh	11.20	11.10	11.30	11.30	3.88	3.87	3.90	3.90	29.00	28.60	29.40	29.40	0.00	0.00	0.80	2.80
Pakistan	2.58	2.55	2.60	2.60	3.03	3.24	3.23	3.23	5.20	5.50	5.60	5.60	0.00	0.00	0.10	1.82
Southeast Asia																
Indonesia	11.90	11.90	11.90	11.90	4.60	4.63	4.72	4.72	35.30	35.50	36.25	36.25	0.00	0.00	0.75	2.11
Vietnam	7.20	7.34	7.32	7.32	4.82	4.86	4.88	4.88	22.92	23.54	23.56	23.56	0.00	0.00	0.02	0.07
Thailand	10.27	10.43	10.50	10.50	2.69	2.69	2.71	2.71	18.25	18.50	18.80	18.80	0.00	0.00	0.30	1.62
Burma, Union of	7.00	7.09	6.80	6.39	2.61	2.61	2.54	2.54	10.60	10.73	10.00	9.40	-0.60	-6.00	-1.33	-12.40
Philippines	4.19	4.25	4.30	4.30	3.70	3.84	3.86	3.94	10.09	10.60	10.80	11.00	0.20	1.85	0.40	3.77
Cambodia	2.52	2.53	2.60	2.60	2.49	2.56	2.58	2.58	3.95	4.08	4.23	4.23	0.00	0.00	0.15	3.68
Laos	0.76	0.76	0.78	0.78	3.50	3.49	3.53	3.53	1.60	1.59	1.65	1.65	0.00	0.00	0.06	3.77
Malaysia	0.65	0.66	0.68	0.68	3.30	3.45	3.46	3.46	1.39	1.48	1.52	1.52	0.00	0.00	0.04	2.70
South America																
Brazil	2.98	2.93	3.10	3.10	3.81	4.08	4.03	4.03	7.70	8.13	8.50	8.50	0.00	0.00	0.37	4.56
Peru	0.35	0.35	0.35	0.35	6.63	7.04	7.04	7.04	1.60	1.70	1.70	1.70	0.00	0.00	0.00	0.00
Sub-Saharan Africa																
Nigeria	2.05	2.20	2.30	2.30	2.36	2.27	2.25	2.25	2.90	3.00	3.10	3.10	0.00	0.00	0.10	3.33
Madagascar	1.35	1.35	1.33	1.33	2.59	2.67	2.72	2.72	2.24	2.30	2.30	2.30	0.00	0.00	0.00	0.00
EU-27																
Italy	0.23	0.23	0.23	0.23	6.28	6.28	6.28	6.28	0.87	0.87	0.87	0.87	0.00	0.00	0.00	0.00
Spain	0.11	0.10	0.10	0.09	7.04	7.23	7.12	7.22	0.52	0.52	0.52	0.46	-0.06	-11.20	-0.06	-10.85
Egypt	0.67	0.67	0.67	0.67	10.08	10.07	10.04	10.04	4.38	4.39	4.39	4.39	0.00	0.00	0.00	0.05
Iran	0.62	0.63	0.64	0.64	4.84	5.24	5.33	5.33	1.98	2.18	2.25	2.25	0.00	0.00	0.07	3.31
Others	9.47	9.43	9.60	9.61	3.01	3.06	3.08	3.11	18.51	18.76	19.24	19.41	0.17	0.88	0.65	3.49

World and Selected Countries and Regions
Yield is on a rough basis, before the milling process
Production is on a milled basis, after the milling process

6/10/2008 10:04:05 AM

**Table 10 5-Major Oilseeds; Area, Yield, and Production 1/
1000 Metric Tons**

Country / Region	Area (Million hectares)			Yield (Metric tons per hectare)			Production (Million metric tons)			Change in Production			
	Prel. 2006/07	2008/09 2007/08	Proj. Jun	Prel. 2006/07	2008/09 2007/08	Proj. Jun	Prel. 2006/07	2008/09 2007/08	Proj. Jun	From last month MMT	Percent	From last year MMT	Percent
World	198.39	193.96	203.48	1.95	1.91	1.97	387.83	370.98	401.69			30.71	8.28
United States	36.96	31.44	35.09	2.61	2.54	2.65	96.61	80.00	93.04			13.04	16.29
Total Foreign	161.43	162.53	168.39	1.80	1.79	1.83	291.22	290.98	308.65			17.68	6.07
South America													
Brazil	21.99	22.59	23.84	2.82	2.83	2.81	61.98	64.02	67.00			2.98	4.65
Argentina	19.30	20.04	20.37	2.75	2.61	2.63	53.16	52.34	53.64			1.30	2.49
Paraguay	2.75	2.98	3.15	2.41	2.44	2.46	6.61	7.28	7.74			0.46	6.32
Bolivia	1.01	0.87	0.86	1.80	1.36	2.07	1.82	1.18	1.78			0.60	50.85
Uruguay	0.41	0.49	0.59	2.11	2.00	2.00	0.86	0.99	1.19			0.20	20.61
China, Peoples	25.75	25.20	26.15	2.11	2.07	2.13	54.31	52.17	55.81			3.64	6.98
South Asia													
India	31.98	32.30	33.70	0.92	1.03	1.01	29.28	33.17	34.00			0.83	2.51
Pakistan	4.01	4.00	4.08	1.31	1.14	1.28	5.25	4.57	5.21			0.64	13.94
Former Soviet Union													
Russian Federation	7.16	6.24	6.80	1.13	1.11	1.16	8.08	6.93	7.90			0.97	13.93
Ukraine	5.00	4.93	5.75	1.36	1.21	1.41	6.79	5.95	8.10			2.15	36.13
Uzbekistan, Republic	1.43	1.45	1.42	1.61	1.66	1.62	2.30	2.40	2.30			-0.10	-4.17
Canada	6.52	7.16	7.20	1.94	1.62	1.75	12.61	11.57	12.61			1.04	8.94
EU-27													
France	2.10	2.17	2.11	2.69	2.78	2.91	5.63	6.01	6.13			0.12	2.03
Germany	1.46	1.57	1.45	3.70	3.43	3.71	5.40	5.37	5.36			-0.01	-0.20
United Kingdom	0.58	0.68	0.65	3.29	3.10	3.31	1.89	2.11	2.15			0.04	1.99
Romania	1.34	1.25	1.35	1.52	0.80	1.75	2.04	1.00	2.36			1.36	136.44
Czech Republic	0.35	0.37	0.37	2.86	2.98	2.83	1.00	1.10	1.06			-0.04	-3.74
Hungary	0.71	0.76	0.83	2.25	2.07	2.19	1.60	1.58	1.82			0.25	15.52
Poland	0.63	0.80	0.76	2.63	2.66	2.92	1.66	2.13	2.21			0.08	3.62
Italy	0.33	0.27	0.21	2.64	2.66	2.69	0.86	0.71	0.57			-0.14	-20.08
Australia	1.24	1.27	1.37	0.82	1.11	1.32	1.02	1.41	1.81			0.40	28.35
Turkey	1.16	1.05	0.99	1.95	1.85	1.88	2.26	1.95	1.86			-0.09	-4.62
Sub-Saharan Africa													
Nigeria	2.05	2.08	2.08	1.04	1.05	1.05	2.13	2.19	2.19			0.00	0.00
South Africa, Republic	0.55	0.81	0.87	1.11	1.60	1.52	0.62	1.30	1.31			0.02	1.15
Southeast Asia													
Indonesia	1.38	1.33	1.38	1.47	1.46	1.50	2.03	1.94	2.06			0.12	6.12
Others	20.26	19.88	20.08	0.99	0.99	1.02	20.02	19.62	20.49			0.87	4.45

World and Selected Countries and Regions
1/ (soybeans, sunflowerseed, rapeseed, cottonseed, and peanuts)

6/10/2008 10:04:16 AM

Table 11 Soybean Area, Yield, and Production
1000 Metric Tons

Country / Region	Area (Million hectares)			Yield (Metric tons per hectare)			Production (Million metric tons)			Change in Production			
	Prel. 2006/07	2008/09 2007/08	Proj. Jun	Prel. 2006/07	2008/09 2007/08	Proj. Jun	Prel. 2006/07	2008/09 2007/08	Proj. Jun	From last month		From last year	
										MMT	Percent	MMT	Percent
World	94.11	90.53	97.68	2.51	2.42	2.46	236.56	218.80	240.67			21.87	10.00
United States	30.19	25.42	29.87	2.87	2.77	2.83	86.77	70.36	84.50			14.15	20.11
Total Foreign	63.92	65.11	67.82	2.34	2.28	2.30	149.79	148.44	156.17			7.73	5.21
South America													
Brazil	20.70	21.30	22.50	2.85	2.86	2.84	59.00	61.00	64.00			3.00	4.92
Argentina	16.30	16.80	17.10	2.99	2.80	2.81	48.80	47.00	48.00			1.00	2.13
Paraguay	2.40	2.60	2.75	2.58	2.62	2.62	6.20	6.80	7.20			0.40	5.88
Bolivia	0.85	0.73	0.72	1.94	1.44	2.29	1.65	1.05	1.65			0.60	57.14
Uruguay	0.37	0.45	0.54	2.24	2.00	2.00	0.82	0.90	1.08			0.19	20.67
East Asia													
China, Peoples	9.10	8.70	9.40	1.67	1.55	1.70	15.20	13.50	16.00			2.50	18.52
Korea, Republic of	0.09	0.08	0.09	1.73	1.50	1.76	0.16	0.11	0.15			0.04	31.58
Korea, Democratic	0.14	0.14	0.14	1.19	1.19	1.19	0.16	0.16	0.16			0.00	0.00
Japan	0.14	0.14	0.14	1.58	1.63	1.63	0.23	0.23	0.23			0.00	0.00
India	8.12	8.80	9.10	0.95	1.06	0.96	7.69	9.30	8.70			-0.60	-6.45
Canada	1.20	1.17	1.21	2.88	2.31	2.53	3.46	2.70	3.06			0.36	13.33
Former Soviet Union													
Ukraine	0.71	0.63	0.55	1.25	1.03	1.27	0.89	0.65	0.70			0.05	7.69
Russian Federation	0.82	0.71	0.73	0.99	0.92	0.97	0.81	0.65	0.70			0.05	7.36
Southeast Asia													
Indonesia	0.62	0.60	0.62	1.31	1.30	1.29	0.82	0.78	0.80			0.02	2.56
Vietnam	0.21	0.28	0.28	1.47	1.46	1.46	0.31	0.41	0.41			0.00	0.00
Thailand	0.15	0.14	0.12	1.45	1.50	1.50	0.21	0.21	0.18			-0.03	-14.29
Burma, Union of	0.15	0.15	0.15	1.17	1.17	1.17	0.18	0.18	0.18			0.00	0.00
EU-27													
Italy	0.18	0.13	0.10	3.10	3.14	3.20	0.55	0.41	0.32			-0.09	-21.57
France	0.05	0.03	0.03	2.73	2.75	2.67	0.12	0.09	0.08			-0.01	-9.09
Sub-Saharan Africa													
South Africa, Republic	0.18	0.18	0.20	1.13	1.83	1.75	0.21	0.32	0.35			0.03	9.38
Nigeria	0.43	0.44	0.44	1.02	1.02	1.02	0.44	0.45	0.45			0.00	0.00
Uganda	0.15	0.15	0.15	1.10	1.10	1.10	0.17	0.17	0.17			0.00	0.00
Serbia	0.17	0.15	0.13	2.12	2.20	2.55	0.35	0.33	0.34			0.01	2.12
Mexico	0.05	0.05	0.07	1.48	1.43	1.54	0.08	0.08	0.10			0.02	31.58
Iran	0.10	0.10	0.11	2.40	2.40	2.36	0.24	0.24	0.26			0.02	8.33
Others	0.57	0.47	0.47	1.90	1.57	1.95	1.08	0.74	0.91			0.17	23.41

World and Selected Countries and Regions

6/10/2008 10:03:59 AM

Table 12 Cottonseed Area, Yield, and Production
1000 Metric Tons

Country / Region	Area (Million hectares)			Yield (Metric tons per hectare)			Production (Million metric tons)			Change in Production			
	Prel. 2006/07	2008/09 2007/08	Proj. Jun	Prel. 2006/07	2008/09 2007/08	Proj. Jun	Prel. 2006/07	2008/09 2007/08	Proj. Jun	From last month MMT	Percent	From last year MMT	Percent
World	33.79	32.75	31.64	1.36	1.39	1.43	45.83	45.57	45.08			-0.49	-1.07
United States	5.15	4.25	3.44	1.29	1.41	1.37	6.67	5.98	4.73			-1.25	-20.93
Total Foreign	28.64	28.50	28.20	1.37	1.39	1.43	39.16	39.60	40.36			0.76	1.92
China, Peoples	6.00	6.20	6.00	2.32	2.26	2.32	13.91	14.03	13.91			-0.12	-0.86
South Asia													
India	9.17	9.50	9.50	1.00	1.12	1.19	9.13	10.60	11.30			0.70	6.60
Pakistan	3.25	3.25	3.25	1.33	1.14	1.29	4.32	3.70	4.20			0.50	13.51
Former Soviet Union													
Uzbekistan, Republic	1.43	1.45	1.42	1.61	1.66	1.62	2.30	2.40	2.30			-0.10	-4.17
Turkmenistan	0.60	0.60	0.60	0.78	0.85	0.83	0.47	0.51	0.50			-0.01	-1.96
Tajikistan, Republic of	0.26	0.25	0.24	1.00	0.90	0.94	0.26	0.23	0.23			0.00	0.00
Kazakhstan, Republic	0.20	0.20	0.16	1.26	1.23	1.25	0.25	0.25	0.20			-0.05	-18.37
South America													
Brazil	1.09	1.10	1.15	2.38	2.43	2.30	2.61	2.67	2.65			-0.03	-0.94
Argentina	0.40	0.33	0.36	0.71	0.72	0.72	0.29	0.24	0.26			0.02	9.24
Middle East													
Turkey	0.64	0.55	0.45	2.05	2.09	2.00	1.31	1.15	0.90			-0.25	-21.74
Syria	0.21	0.20	0.18	2.10	2.76	2.78	0.45	0.55	0.50			-0.05	-9.26
Iran	0.12	0.12	0.12	1.02	0.98	0.98	0.12	0.12	0.12			0.00	0.00
Australia	0.15	0.08	0.18	2.90	2.45	2.63	0.42	0.18	0.46			0.28	150.00
EU-27													
Greece	0.33	0.32	0.25	1.37	1.36	1.42	0.45	0.43	0.36			-0.07	-17.02
Spain	0.05	0.05	0.06	1.27	1.06	0.89	0.07	0.06	0.05			-0.01	-14.04
Sub-Saharan Africa													
Burkina	0.70	0.43	0.43	0.51	0.47	0.49	0.36	0.20	0.21			0.01	3.50
Mali	0.46	0.30	0.30	0.49	0.45	0.45	0.22	0.13	0.13			0.00	0.00
Cameroon	0.20	0.14	0.20	0.91	0.80	0.69	0.18	0.11	0.14			0.03	22.32
Sudan	0.16	0.06	0.06	0.72	0.93	0.85	0.12	0.06	0.05			-0.01	-8.93
Zimbabwe	0.35	0.40	0.40	0.54	0.48	0.57	0.19	0.19	0.23			0.04	20.00
Nigeria	0.38	0.40	0.40	0.46	0.49	0.49	0.17	0.19	0.19			0.00	0.00
Benin	0.23	0.25	0.25	0.68	0.69	0.66	0.16	0.17	0.17			-0.01	-4.62
Uganda	0.27	0.27	0.27	0.31	0.19	0.24	0.08	0.05	0.07			0.01	26.92
Egypt	0.25	0.25	0.14	1.28	1.36	1.50	0.32	0.34	0.20			-0.14	-40.59
Mexico	0.12	0.12	0.12	1.89	1.85	1.85	0.22	0.23	0.23			0.00	0.00
Burma, Union of	0.30	0.30	0.30	0.53	0.53	0.53	0.16	0.16	0.16			0.00	0.00
Others	1.34	1.39	1.43	0.49	0.46	0.46	0.65	0.65	0.66			0.01	2.01

World and Selected Countries and Regions

6/10/2008 10:03:59 AM

Table 13 Peanut Area, Yield, and Production
1000 Metric Tons

Country / Region	Area (Million hectares)			Yield (Metric tons per hectare)			Production (Million metric tons)			Change in Production			
	Prel. 2006/07	2008/09 2007/08	Proj. Jun	Prel. 2006/07	2008/09 2007/08	Proj. Jun	Prel. 2006/07	2008/09 2007/08	Proj. Jun	From last month MMT	Percent	From last year MMT	Percent
World	20.27	20.82	21.33	1.51	1.55	1.56	30.53	32.25	33.23			0.98	3.04
United States	0.49	0.48	0.56	3.21	3.51	3.43	1.57	1.70	1.94			0.24	14.02
Total Foreign	19.78	20.33	20.77	1.46	1.50	1.51	28.95	30.55	31.30			0.74	2.44
China, Peoples	3.80	3.80	3.90	3.35	3.43	3.44	12.74	13.02	13.40			0.38	2.95
South Asia													
India	5.91	6.40	6.70	0.91	1.03	1.01	5.39	6.60	6.80			0.20	3.03
Pakistan	0.11	0.11	0.11	0.90	0.90	0.90	0.10	0.10	0.10			0.00	0.00
Sub-Saharan Africa													
Nigeria	1.24	1.25	1.25	1.23	1.25	1.25	1.52	1.55	1.55			0.00	0.00
Senegal	0.59	0.65	0.65	0.77	0.65	0.72	0.46	0.42	0.47			0.05	11.90
Chad	0.48	0.50	0.50	0.94	0.94	0.94	0.45	0.47	0.47			0.00	0.00
Ghana	0.47	0.47	0.47	0.94	0.94	0.94	0.44	0.44	0.44			0.00	0.00
Sudan	1.00	1.00	1.00	0.85	0.85	0.85	0.85	0.85	0.85			0.00	0.00
Congo, Democratic	0.48	0.48	0.48	0.78	0.78	0.78	0.37	0.37	0.37			0.00	0.00
Burkina	0.35	0.35	0.35	0.99	1.01	1.01	0.34	0.35	0.35			0.00	0.00
Guinea	0.21	0.21	0.21	1.24	1.24	1.24	0.26	0.26	0.26			0.00	0.00
Cameroon	0.31	0.31	0.31	0.76	0.77	0.77	0.24	0.24	0.24			0.00	0.00
Mali	0.25	0.25	0.25	1.10	1.10	1.10	0.28	0.28	0.28			0.00	0.00
Malawi	0.22	0.22	0.22	0.93	1.20	1.20	0.20	0.27	0.27			0.00	0.00
Cote d'Ivoire	0.15	0.15	0.15	1.00	1.00	1.00	0.15	0.15	0.15			0.00	0.00
Uganda	0.21	0.21	0.21	0.70	0.70	0.70	0.15	0.15	0.15			0.00	0.00
Central African	0.13	0.13	0.13	1.12	1.12	1.12	0.14	0.14	0.14			0.00	0.00
Benin	0.16	0.16	0.16	0.81	0.81	0.81	0.13	0.13	0.13			0.00	0.00
Mozambique	0.29	0.29	0.29	0.38	0.38	0.38	0.11	0.11	0.11			0.00	0.00
Niger	0.26	0.26	0.26	0.42	0.42	0.42	0.11	0.11	0.11			0.00	0.00
South Africa, Republic	0.04	0.06	0.05	1.93	2.09	2.00	0.08	0.12	0.10			-0.02	-13.04
Southeast Asia													
Indonesia	0.75	0.72	0.75	1.60	1.60	1.67	1.20	1.15	1.25			0.10	8.70
Burma, Union of	0.80	0.80	0.80	1.10	1.10	1.10	0.88	0.88	0.88			0.00	0.00
Vietnam	0.26	0.26	0.26	1.77	1.77	1.77	0.46	0.46	0.46			0.00	0.00
Thailand	0.07	0.07	0.07	1.77	1.77	1.77	0.12	0.12	0.12			0.00	0.00
South America													
Argentina	0.20	0.21	0.21	2.88	2.86	2.90	0.58	0.60	0.61			0.01	1.50
Brazil	0.12	0.12	0.12	2.17	2.17	2.17	0.25	0.25	0.25			0.00	0.00
Egypt	0.06	0.06	0.06	3.17	3.17	3.17	0.19	0.19	0.19			0.00	0.00
Mexico	0.05	0.04	0.05	1.56	1.69	1.56	0.07	0.07	0.07			0.00	6.06
Others	0.84	0.83	0.84	0.87	0.89	0.90	0.73	0.74	0.75			0.01	1.63

World and Selected Countries and Regions

6/10/2008 10:04:01 AM

Table 14 Sunflowerseed Area, Yield, and Production
1000 Metric Tons

Country / Region	Area (Million hectares)			Yield (Metric tons per hectare)			Production (Million metric tons)			Change in Production			
	Prel. 2006/07	2008/09 2007/08	Proj. Jun	Prel. 2006/07	2008/09 2007/08	Proj. Jun	Prel. 2006/07	2008/09 2007/08	Proj. Jun	From last month MMT	Percent	From last year MMT	Percent
World	23.70	21.97	23.80	1.26	1.23	1.32	29.81	27.03	31.48			4.46	16.49
United States	0.72	0.81	0.83	1.36	1.61	1.52	0.97	1.31	1.25			-0.06	-4.35
Total Foreign	22.99	21.15	22.98	1.25	1.22	1.32	28.84	25.72	30.23			4.51	17.55
Former Soviet Union													
Russian Federation	5.90	5.00	5.50	1.14	1.13	1.18	6.75	5.65	6.50			0.85	15.04
Ukraine	3.90	3.40	3.80	1.36	1.24	1.32	5.30	4.20	5.00			0.80	19.05
Moldova, Republic of	0.25	0.24	0.24	1.52	0.67	0.67	0.38	0.16	0.16			0.00	0.00
Kazakhstan, Republic	0.43	0.35	0.43	0.63	0.64	0.62	0.27	0.23	0.27			0.04	17.78
South America													
Argentina	2.40	2.70	2.70	1.46	1.67	1.77	3.50	4.50	4.77			0.27	6.04
Uruguay	0.04	0.05	0.05	1.02	2.00	2.00	0.04	0.09	0.11			0.02	20.00
Bolivia	0.16	0.14	0.14	1.06	0.93	0.93	0.17	0.13	0.13			0.00	0.00
China, Peoples	0.85	0.80	0.85	1.76	1.56	1.76	1.50	1.25	1.50			0.25	20.00
EU-27													
France	0.64	0.52	0.60	2.16	2.56	2.25	1.39	1.32	1.35			0.03	2.27
Hungary	0.54	0.51	0.55	2.20	2.04	2.15	1.18	1.04	1.18			0.14	13.14
Spain	0.63	0.60	0.70	0.96	1.16	1.14	0.61	0.70	0.80			0.10	14.29
Italy	0.15	0.13	0.10	2.12	2.21	2.25	0.31	0.28	0.23			-0.05	-19.35
Slovakia	0.11	0.07	0.08	2.12	2.05	2.11	0.23	0.13	0.18			0.04	33.08
South Asia													
India	2.15	1.90	2.20	0.60	0.64	0.64	1.28	1.22	1.40			0.18	15.13
Pakistan	0.41	0.38	0.45	1.28	1.52	1.52	0.52	0.58	0.69			0.10	17.50
Turkey	0.48	0.47	0.50	1.77	1.49	1.70	0.85	0.70	0.85			0.15	21.43
South Africa,	0.32	0.57	0.60	0.98	1.49	1.40	0.31	0.84	0.84			0.00	0.00
Burma, Union of	0.97	0.97	0.97	0.36	0.36	0.36	0.35	0.35	0.35			0.00	0.00
Serbia	0.21	0.13	0.19	1.90	2.00	2.11	0.40	0.26	0.40			0.14	53.85
Canada	0.08	0.08	0.06	2.00	1.58	1.59	0.15	0.12	0.10			-0.03	-20.49
Australia	0.02	0.05	0.05	1.06	1.11	1.11	0.02	0.05	0.05			0.00	0.00
Others	2.38	2.12	2.22	1.41	0.90	1.53	3.34	1.92	3.39			1.48	76.98

World and Selected Countries and Regions

6/10/2008 10:04:01 AM

Table 15 Rapeseed Area, Yield, and Production
1000 Metric Tons

Country / Region	Area (Million hectares)			Yield (Metric tons per hectare)			Production (Million metric tons)			Change in Production			
	Prel. 2006/07	2008/09 2007/08	Proj. Jun	Prel. 2006/07	2008/09 2007/08	Proj. Jun	Prel. 2006/07	2008/09 2007/08	Proj. Jun	From last month		From last year	
										MMT	Percent	MMT	Percent
World	26.51	27.90	29.03	1.70	1.70	1.76	45.10	47.33	51.22			3.89	8.22
United States	0.41	0.47	0.40	1.53	1.40	1.57	0.63	0.66	0.62			-0.04	-6.06
Total Foreign	26.10	27.43	28.64	1.70	1.70	1.77	44.47	46.67	50.60			3.93	8.42
EU-27													
Germany	1.43	1.55	1.43	3.73	3.44	3.72	5.34	5.32	5.30			-0.02	-0.39
France	1.41	1.62	1.48	2.93	2.84	3.18	4.12	4.60	4.70			0.10	2.17
United Kingdom	0.58	0.68	0.65	3.29	3.10	3.31	1.89	2.11	2.15			0.04	1.99
Poland	0.62	0.80	0.75	2.65	2.67	2.93	1.65	2.13	2.20			0.08	3.53
Czech Republic	0.29	0.34	0.34	3.01	3.06	2.91	0.88	1.03	0.99			-0.04	-3.98
Denmark	0.13	0.18	0.18	3.48	3.31	3.39	0.44	0.59	0.60			0.01	2.39
Hungary	0.14	0.22	0.25	2.43	2.25	2.28	0.34	0.49	0.57			0.08	15.38
Romania	0.10	0.34	0.39	1.63	1.04	1.69	0.17	0.35	0.65			0.30	84.66
Slovakia	0.12	0.15	0.16	2.11	2.08	2.16	0.26	0.32	0.35			0.03	8.10
Sweden	0.09	0.09	0.10	2.45	2.53	2.53	0.22	0.22	0.24			0.02	7.62
Lithuania	0.15	0.17	0.20	1.13	1.90	1.75	0.17	0.33	0.35			0.02	6.06
Latvia	0.08	0.10	0.10	1.45	2.14	2.20	0.12	0.21	0.22			0.01	3.77
Austria	0.04	0.05	0.04	3.26	3.00	2.84	0.14	0.14	0.13			-0.02	-13.19
Finland	0.11	0.09	0.10	1.38	1.27	1.26	0.15	0.11	0.12			0.01	5.26
Estonia	0.06	0.07	0.08	1.35	1.49	1.50	0.09	0.11	0.12			0.01	10.09
China, Peoples	6.00	5.70	6.00	1.83	1.82	1.83	10.97	10.38	11.00			0.63	6.02
South Asia													
India	6.64	5.70	6.20	0.87	0.96	0.94	5.80	5.45	5.80			0.35	6.42
Pakistan	0.25	0.26	0.27	1.30	0.75	0.83	0.32	0.19	0.23			0.04	18.42
Bangladesh	0.31	0.30	0.30	0.76	0.71	0.73	0.24	0.21	0.22			0.01	4.76
Canada	5.24	5.91	5.93	1.72	1.48	1.59	9.00	8.75	9.45			0.70	8.00
Australia	1.03	1.10	1.10	0.50	1.00	1.09	0.52	1.10	1.20			0.10	9.09
Former Soviet Union													
Ukraine	0.39	0.90	1.40	1.54	1.22	1.71	0.60	1.10	2.40			1.30	118.18
Russian Federation	0.45	0.54	0.58	1.16	1.18	1.22	0.52	0.63	0.70			0.07	10.76
Belarus	0.11	0.15	0.15	1.07	1.20	1.23	0.12	0.18	0.19			0.01	2.78
Paraguay	0.10	0.10	0.10	1.50	1.50	1.80	0.15	0.15	0.18			0.03	20.00
Others	0.23	0.34	0.38	1.19	1.36	1.48	0.27	0.47	0.56			0.09	20.17

World and Selected Countries and Regions

6/10/2008 10:04:01 AM

Table 16 Copra, Palm Kernel, and Palm Oil Production
1000 Metric Tons

Country / Region	Production (Million metric tons)			Change in Production			
	2006/07	Prel. 2007/08	2008/09 Proj. Jun	From last month MMT	Percent	From last year MMT	Percent
Oilseed, Copra							
Philippines	2.20	2.50	2.60	2.60	0.00	0.10	0.04
Indonesia	1.44	1.50	1.60	1.60	0.00	0.10	0.07
India	0.62	0.70	0.74	0.74	0.00	0.04	0.06
Vietnam	0.24	0.24	0.24	0.24	0.00	0.00	0.00
Mexico	0.23	0.23	0.23	0.22	0.00	0.00	0.00
Papua New Guinea	0.11	0.11	0.11	0.11	0.00	0.00	0.00
Thailand	0.07	0.07	0.07	0.07	0.00	0.00	0.00
Sri Lanka	0.06	0.07	0.07	0.07	0.00	0.00	0.00
Mozambique	0.05	0.05	0.05	0.05	0.00	0.00	0.00
Cote d'Ivoire	0.05	0.05	0.05	0.04	0.00	0.00	0.00
World	5.26	5.70	5.94	5.94	0.00	0.24	0.04
Oilseed, Palm Kernel							
Indonesia	4.45	4.79	5.35	5.35	0.00	0.56	0.12
Malaysia	3.94	4.47	4.47	4.47	0.00	0.00	0.00
Nigeria	0.67	0.67	0.67	0.67	0.00	0.00	0.00
Thailand	0.23	0.21	0.28	0.28	0.00	0.07	0.33
Colombia	0.17	0.17	0.17	0.17	0.00	0.00	0.00
Papua New Guinea	0.10	0.11	0.12	0.12	0.00	0.01	0.09
Cote d'Ivoire	0.08	0.08	0.08	0.08	0.00	0.00	0.00
Cameroon	0.07	0.07	0.07	0.07	0.00	0.00	0.00
Ecuador	0.06	0.06	0.06	0.06	0.00	0.00	0.00
Congo, Democratic Rep of	0.06	0.06	0.06	0.06	0.00	0.00	0.00
World	10.19	11.05	11.69	11.69	0.00	0.64	0.06
Oil, Palm							
Indonesia	16.60	18.30	19.70	19.70	0.00	1.40	0.08
Malaysia	15.29	17.40	17.40	17.40	0.00	0.00	0.00
Thailand	1.17	1.05	1.40	1.40	0.00	0.35	0.33
Colombia	0.77	0.83	0.83	0.83	0.00	0.00	0.00
Nigeria	0.81	0.82	0.82	0.82	0.00	0.00	0.00
Papua New Guinea	0.38	0.40	0.43	0.42	0.00	0.02	0.05
Ecuador	0.34	0.34	0.34	0.34	0.00	0.00	0.00
Cote d'Ivoire	0.32	0.32	0.32	0.32	0.00	0.00	0.00
Costa Rica	0.29	0.29	0.29	0.28	0.00	0.00	0.00
Congo, Democratic Rep of	0.18	0.18	0.18	0.18	0.00	0.00	0.00
World	37.34	41.12	42.90	42.90	0.00	1.78	0.04

World and Selected Countries and Regions

6/10/2008 10:49:50 AM

Table 17 Cotton Area, Yield, and Production

1000 480 lb. Bales

Country / Region	Area (Million hectares)			Yield (Kilograms per hectare)			Production (Million 480 lb. bales)			Change in Production			
	Prel. 2006/07	2008/09 2007/08	Proj. Jun	Prel. 2006/07	2008/09 2007/08	Proj. Jun	Prel. 2006/07	2008/09 2007/08	Proj. Jun	From last month MBales	Percent	From last year MBales	Percent
World	34.700	33.323	32.494	766.000	784.000	780.000	122.088	120.039	116.431			-3.608	-3.006
United States	5.152	4.245	3.395	912.000	985.000	930.000	21.588	19.207	14.500			-4.707	-24.507
Total Foreign	29.548	29.078	29.099	741.000	755.000	763.000	100.500	100.832	101.931			1.099	1.090
China, Peoples	6.000	6.200	6.000	1,288.0	1,257.0	1,288.0	35.500	35.800	35.500			-0.300	-0.838
South Asia													
India	9.166	9.530	9.650	518.000	578.000	598.000	21.800	25.300	26.500			1.200	4.743
Pakistan	3.250	3.000	3.050	663.000	646.000	671.000	9.900	8.900	9.400			0.500	5.618
Former Soviet Union													
Uzbekistan, Republic	1.430	1.450	1.420	815.000	826.000	782.000	5.350	5.500	5.100			-0.400	-7.273
Turkmenistan	0.600	0.600	0.600	435.000	472.000	472.000	1.200	1.300	1.300			0.000	0.000
Tajikistan, Republic of	0.255	0.250	0.240	551.000	523.000	499.000	0.645	0.600	0.550			-0.050	-8.333
Kazakhstan, Republic	0.195	0.200	0.160	698.000	680.000	633.000	0.625	0.625	0.465			-0.160	-25.600
Sub-Saharan Africa													
Burkina	0.700	0.400	0.520	404.000	367.000	429.000	1.300	0.675	1.025			0.350	51.852
Mali	0.460	0.284	0.350	375.000	345.000	404.000	0.792	0.450	0.650			0.200	44.444
Zimbabwe	0.350	0.400	0.400	311.000	299.000	313.000	0.500	0.550	0.575			0.025	4.545
Benin	0.231	0.234	0.300	448.000	465.000	472.000	0.475	0.500	0.650			0.150	30.000
Cote d'Ivoire	0.214	0.200	0.225	317.000	245.000	339.000	0.312	0.225	0.350			0.125	55.556
Cameroon	0.200	0.140	0.160	397.000	350.000	408.000	0.365	0.225	0.300			0.075	33.333
Nigeria	0.380	0.395	0.395	229.000	248.000	248.000	0.400	0.450	0.450			0.000	0.000
Sudan	0.160	0.060	0.160	306.000	399.000	408.000	0.225	0.110	0.300			0.190	172.727
South America													
Brazil	1.094	1.090	0.980	1,393.0	1,428.0	1,422.0	7.000	7.150	6.400			-0.750	-10.490
Argentina	0.400	0.330	0.360	435.000	445.000	438.000	0.800	0.675	0.725			0.050	7.407
Paraguay	0.125	0.060	0.090	279.000	417.000	327.000	0.160	0.115	0.135			0.020	17.391
Middle East													
Turkey	0.640	0.570	0.400	1,327.0	1,222.0	1,415.0	3.900	3.200	2.600			-0.600	-18.750
Syria	0.214	0.200	0.180	1,038.0	1,252.0	1,210.0	1.020	1.150	1.000			-0.150	-13.043
Iran	0.115	0.120	0.120	757.000	726.000	726.000	0.400	0.400	0.400			0.000	0.000
Australia	0.145	0.075	0.175	2,027.0	1,742.0	1,866.0	1.350	0.600	1.500			0.900	150.000
EU-27													
Greece	0.330	0.315	0.250	924.000	916.000	958.000	1.400	1.325	1.100			-0.225	-16.981
Spain	0.052	0.054	0.055	892.000	746.000	633.000	0.213	0.185	0.160			-0.025	-13.514
Egypt	0.246	0.250	0.135	863.000	914.000	1,008.0	0.975	1.050	0.625			-0.425	-40.476
Mexico	0.115	0.110	0.115	1,231.0	1,227.0	1,287.0	0.650	0.620	0.680			0.060	9.677
Others	2.481	2.561	2.609	285.000	268.000	291.000	3.243	3.152	3.491			0.339	10.755

World and Selected Countries and Regions

6/10/2008 10:04:01 AM

TABLE 18

The table below presents a 27-year record of the differences between the June projection and the final estimate. Using world wheat production as an example, changes between the June projection and the final estimate have averaged 15.0 million tons (2.7 percent) and ranged from -32.2 to 29.6 million tons. The June projection has been below the final 15 times and above the final 12 times.

RELIABILITY OF PRODUCTION PROJECTIONS

COMMODITY AND REGION	PROJECTION AND FINAL ESTIMATES, 1981/82 - 2005/06 1/					
	Difference		Lowest	Highest	Below	Above
	Average	Average	Difference		Final	Final
	Percent	---Million metric tons---		Number of years 2/		
WHEAT						
World	2.7	15.0	-32.2	29.6	15	12
U.S.	4.5	2.7	-7.4	8.4	14	13
Foreign	2.9	13.8	-28.8	28.2	14	13
COARSE GRAINS 3/						
World	2.8	23.4	-77.0	76.0	14	13
U.S.	9.0	19.0	-35.9	70.3	13	14
Foreign	2.2	13.5	-41.6	39.5	11	16
RICE (Milled)						
World	2.1	7.2	-21.8	15.2	19	8
U.S.	5.7	0.3	-1.1	0.5	16	11
Foreign	2.1	7.2	-21.9	15.3	18	9
SOYBEANS						
World	NA	NA	NA	NA	NA	NA
U.S.	7.5	4.5	-11.3	12.0	13	14
Foreign	NA	NA	NA	NA	NA	NA
	---Million 480-lb. bales---					
COTTON						
World	4.6	4.2	-16.4	11.4	17	9
U.S.	9.2	1.5	-5.6	3.1	14	13
Foreign	4.5	3.3	-12.4	10.5	16	11
UNITED STATES	-----Million bushels-----					
CORN	10.8	766	-3327	2379	14	13
SORGHUM	16.4	97	-228	171	11	15
BARLEY	9.6	33	-73	206	9	18
OATS	17.0	39	-77	231	6	21

1/ The final estimate for 1981/82-2006/07 is defined as the first November estimate following the marketing year.

2/ May not total 25 if projection was the same as the final.

3/ Includes corn, sorghum, barley, oats, rye, millet, and mixed grain.

June 2008

Office of Global Analysis, FAS, USDA