



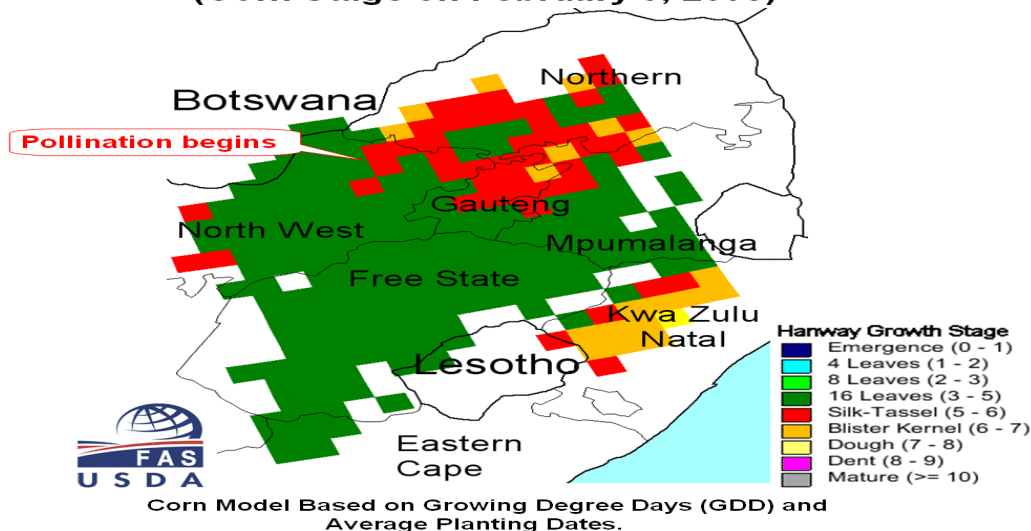
United States
Department of
Agriculture

Foreign
Agricultural
Service

Circular Series
WAP 02-08
February 2008

World Agricultural Production

Pollination Begins in South Africa's Maize Triangle (Corn Stage on February 5, 2008)



South Africa Set for Bumper 2007/08 Corn Harvest

South Africa's 2007/08 corn production is forecast at 11.0 million tons, up 1.0 million tons from last month and up 3.7 million from last year. Corn area is forecast at 3.2 million hectares, unchanged from last month and up 0.3 million or 10 percent from last year. The estimated yield of 3.44 MT/Ha is above the 5-year average yield of 3.00 MT/Ha, and above the 10-year trend of 3.32 MT/Ha.

Seasonal spring rains arrived on time and were above-average during the planting season from October through December. The abundant and well-distributed rains allowed farmers to plant at optimal planting dates, with the exception of one brief dry spell that occurred during the end of December. High corn prices and a La Niña forecast encouraged farmers to plant corn this year, as well as invest in more fertilizers than usual to boost yields. High corn prices also encouraged farmers to plant corn under irrigation, and irrigated area is forecast at a record high of approximately 220,000 hectares.

Approved by the World Agricultural Outlook Board

Current crop conditions range from good to excellent as the crop enters pollination and grain filling stages. Yields currently are forecast above the 10-year trend due to favorable weather, and high input levels. There is some danger that excessive rain could possibly reduce yields due to water-logging and excessive nitrogen leaching. Final yields will be determined from weather conditions during the next two months. *(For more information, contact Curt Reynolds at 202-690-0134.)*

Brazil Set for Record 2007/08 Cotton Output

Brazil's cotton production for 2007/08 is forecast at a record of 7.2 million bales, up 3 percent from last month and last year. Harvested area is forecast at 1.15 million hectares, up 2 percent from last month and up 5.5 percent from last year. Yield is forecast at 1363 kilograms per hectare, up 1 percent from last month but down 2 percent from last year's record yield.

Cotton area continues to shift from the traditional production regions in the south (Sao Paulo and Parana) to the higher yielding regions in the north (Mato Grosso and Bahia). Mato Grosso is the largest producing state and accounts for 52 percent of total cotton, while Bahia and Goias are the second and third largest producing states and account for 31 and 6 percent of the crop, respectively.

National yields continue to increase rapidly as production shifts to the higher yielding states in the north. Mid-season crop conditions in Mato Grosso range from good to excellent due to generally favorable weather. However, planting was delayed by two weeks in the Bahia cotton belt due to the late arrival of seasonal rains, and the same region also experienced a dry spell during early stages of crop development.

Mato Grosso farmers are currently anxious to begin planting the second "safrinha" crop, which is sown immediately after the first soybean harvest. However, heavy rains over the past several weeks have delayed the harvest of early maturing soybeans. Planting delays typically reduce the potential yield of "safrinha" cotton because the crop becomes more susceptible to dry weather at the end of the growing season. *(For more information, contact Curt Reynolds at 202-690-0134.)*

Argentina: Dryness Reduces Yield Prospects

The USDA forecasts Argentine corn production for 2007/08 at 21.5 million tons, down 1.0 million or 4 percent from last month and last year. Area is estimated at 3.1 million hectares, up 0.1 million from last month and up 0.3 million from last year based on Argentine Ministry of Agriculture planting reports. Yield is forecast at 6.94 tons per hectare, compared to the record high 8.04 tons per hectare last year and the five-year average of 6.95 tons per hectare. The U.S. attaché in Buenos Aires reports that earlier adverse dryness has lowered yields, and that although recent rain showers brought moisture to the region, some yield losses are irreversible. *(For more information, contact Denise McWilliams at 202-720-0107.)*

China: Cotton Production Revised Upward

China's cotton production estimate for 2007/08 was raised this month to 35.5 million bales (7.7 million tons), up 1.0 million bales from last month but unchanged from last year. The revision is based on the latest data from the China Cotton Association (CCA). In January, the CCA raised its 2007/08 production estimate to 35.8 million bales (7.8 million tons), citing higher than expected planted area in the latest agricultural census as the reason for the increase. The latest estimate reversed an earlier reduction made by CCA in December 2007. The National Bureau of Statistics has not yet released official area or production estimates for the 2007/08 cotton crop. *(For more information, contact Paulette Sandene at 202-690-0133.)*

India Rapeseed Revised Up

India's 2007/08 rapeseed production is estimated at 5.5 million tons, up 0.1 million or 2 percent from last month and down 0.3 million from last year. Area is forecast at 5.9 million hectares, up 0.2 million from last month and down 0.7 million from last year. According to the latest Indian government data, the rabi or winter season rapeseed planting is down from last year. The estimated decline in rapeseed area from last season is because of dry conditions and changes in support price policy announced in October 2007. Area is down this season, as rapeseed area was shifted into wheat in Haryana and Rajasthan. The change reflects the recent Minimum Support Price (MSP) or procurement price established by the Government of India favoring wheat over rapeseed this season. The wheat MSP was lifted from 750 Rupees (per 100 kilograms) to a new high of 1000 Rupees for the current season. This results in a 33 percent increase on a year-to-year basis for wheat; in contrast, the rapeseed MSP was bolstered only 6 percent year-to-year, from 1715 to 1800 Rupees. Yield was lowered from last month based on dry conditions in many growing areas since sowing began in early November. Yield is currently forecast at 932 kilograms per hectare and is similar to the five-year average. Rapeseed yield is heavily dependent on weather conditions through the flowering period, which occurs in February. *(For more information, contact Jim Crutchfield at 202-690-013.)*

Kazakhstan: Highest Wheat Output in Fifteen Years

The USDA estimates Kazakhstan wheat production for 2007/08 at 16.6 million tons, up 0.6 million from last month and up 3.1 million from last year. This is the largest wheat harvest since the 18.3-million-ton crop of 1992/93. The month-to-month increase is based on data from the Ministry of Agriculture. Area is estimated at 12.8 million hectares, the highest level in 14 years, and yield is estimated at a near-record 1.30 tons per hectare. Production benefited from favorable weather during the growing season and a continuing improvement in technology – including the increased use of elite planting seed – fueled by government subsidies to the agricultural sector. *(For more information, contact Mark Lindeman at 202-690-0143.)*

This report uses information from the Foreign Agricultural Service's (FAS) global network of agricultural attachés and counselors, official statistics of foreign governments and other foreign source materials, and the analysis of economic data and satellite imagery. Estimates of foreign area, yield, and production are from the International Production Assessment Division, FAS, and are reviewed by USDA's Inter-Agency Commodity Estimates Committee. Estimates of U.S. area, yield, and production are from USDA's National Agricultural Statistics Service. Numbers within the report may not add to totals because of rounding. This report reflects official USDA estimates released in the World Agricultural Supply and Demand Estimates (WASDE-455), February 8, 2008.

Printed copies are available from the National Technical Information Service. Download an order form at http://www.ntis.gov/products/specialty/usda/fas_a-g.asp, or call NTIS at 1-800-363-2068.

The FAS International Production Assessment Branch prepared this report. The next issue of World Agricultural Production will be released after 9:30 a.m. Eastern Time, March 11, 2008.

Conversion Table

Metric tons to bushels

Wheat, soybeans	=	MT * 36.7437
Corn, sorghum, rye	=	MT * 39.36825
Barley	=	MT * 45.929625
Oats	=	MT * 68.894438

Metric tons to 480-lb bales

Cotton	=	MT * 4.592917
--------	---	---------------

Metric tons to hundredweight

Rice	=	MT * 22.04622
------	---	---------------

Area & weight

1 hectare	=	2.471044 acres
1 kilogram	=	2.204622 pounds

For further information, contact:
U.S. Department of Agriculture
Foreign Agricultural Service
Office of Global Analysis
International Production Assessment Division
Ag Box 1045, Room 6541, South Building
Washington, DC 20250-1045
Telephone: (202) 720-0888 Fax: (202) 720-8880

GENERAL INFORMATION

Division Director (Acting)	Tom St. Clair	202-720-2974 tom.stclair@fas.usda.gov
Deputy Director	Tom St. Clair	202-720-2974 tom.stclair@fas.usda.gov
Remote Sensing Specialist	Brad Doorn	202-690-0131 doorn@fas.usda.gov
USDA Remote Sensing Advisor	Glenn Bethel	202-720-1280 bethel@fas.usda.gov
Management Analyst	Mary Jackson	202-720-0886 jacksonma@fas.usda.gov
Agricultural Economist	Paul Provance	202-720-0873 paul.provance@fas.usda.gov

COUNTRY- AND REGION-SPECIFIC INFORMATION

South America	Denise McWilliams	202-359-8286 denise.mcwilliams@fas.usda.gov
Europe and North Africa	Bryan Purcell	202-690-0138 bryan.purcell@usda.gov
FSU-12, Argentina	Mark Lindeman	202-690-0143 lindeman@fas.usda.gov
Canada, Mexico, Central America, Caribbean	Arnella Trent	202-720-0881 arnella.trent@fas.usda.gov
China, East Asia	Paulette Sandene	202-690-0133 sandene@fas.usda.gov
Other South America		
South Asia, Indonesia, Australia, & New Zealand	Jim Crutchfield	202-690-0135 crutchfield@fas.usda.gov
Sub-Saharan Africa, Brazil	Curt Reynolds	202-690-0134 reynoldsc@fas.usda.gov
Middle East and South East Asia	Michael Shean	202-720-7366 shean@fas.usda.gov
Eastern United States	William Baker	202-690-0136 william.baker@fas.usda.gov
Western United States	Vacant	

Table 01 World Crop Production Summary
1000 Metric Tons

Commodity	World -	Total Foreign	North America			EU-27 -	Former Soviet		Asia (WAP)					South America		Selected Other			All Others	
			United States	Canada -	Mexico -		Russia -	Ukraine -	China -	India -	Indonesia	Pakistan	Thailand	Argentina	Brazil -	Australia	South Africa	Turkey -		
---Million metric tons---																				
Wheat																				
2005/06	621.5	564.2	57.3	25.7	3.0	132.4	47.7	18.7	97.5	68.6	nr	21.6	nr	14.5	4.9	25.2	1.9	18.5	84.0	
2006/07 prel.	593.2	543.9	49.3	25.3	3.2	124.8	44.9	14.0	104.5	69.4	nr	21.7	nr	15.2	2.2	10.6	2.1	17.5	88.5	
2007/08 proj.																				
Jan	603.0	546.8	56.2	20.1	3.4	119.8	49.4	13.8	106.0	74.9	nr	23.0	nr	15.0	3.4	13.0	1.8	15.5	87.8	
Feb	603.6	547.3	56.2	20.1	3.4	119.5	49.4	13.9	106.0	74.9	nr	23.0	nr	15.5	3.4	13.0	1.8	15.5	88.0	
Coarse Grains																				
2005/06	977.3	678.6	298.8	25.0	25.8	146.7	27.6	18.1	147.7	34.0	6.5	1.8	4.1	19.2	44.2	13.5	7.3	11.9	145.0	
2006/07 prel.	981.8	701.7	280.1	23.1	28.7	138.3	30.2	19.2	154.0	34.2	6.7	2.0	3.9	27.5	53.2	6.6	7.8	10.9	155.4	
2007/08 proj.																				
Jan	1,051.6	700.5	351.1	27.8	30.2	136.6	28.6	15.0	153.4	35.7	7.0	2.0	3.9	27.7	52.9	9.3	10.5	10.0	150.0	
Feb	1,051.9	700.8	351.1	27.8	29.8	136.6	29.3	14.6	153.4	35.7	7.0	2.0	3.9	26.7	52.9	9.4	11.5	10.0	150.2	
Rice, Milled																				
2005/06	417.6	410.5	7.1	nr	0.2	1.7	0.4	0.1	126.4	91.8	35.0	5.5	18.2	0.8	7.9	0.7	nr	0.4	121.6	
2006/07 prel.	417.7	411.4	6.2	nr	0.2	1.7	0.4	0.1	127.8	92.8	33.3	5.2	18.3	0.7	7.7	0.1	nr	0.4	122.8	
2007/08 proj.																				
Jan	420.6	414.3	6.3	nr	0.2	1.7	0.5	0.1	129.5	92.0	34.0	5.4	18.6	0.8	8.0	0.0	nr	0.4	123.2	
Feb	420.6	414.3	6.3	nr	0.2	1.7	0.5	0.1	129.5	92.0	34.0	5.4	18.6	0.8	8.0	0.0	nr	0.4	123.2	
Total Grains																				
2005/06	2,016.4	1,653.3	363.2	50.7	29.0	280.8	75.7	36.9	371.6	194.5	41.5	29.0	22.3	34.5	56.9	39.4	9.2	30.8	350.6	
2006/07 prel.	1,992.7	1,657.0	335.7	48.4	32.2	264.8	75.5	33.2	386.3	196.3	40.0	28.9	22.1	43.4	63.1	17.3	9.9	28.9	366.6	
2007/08 proj.																				
Jan	2,075.2	1,661.6	413.6	47.9	33.8	258.0	78.4	28.8	388.9	202.6	41.0	30.4	22.5	43.5	64.2	22.3	12.2	25.9	361.0	
Feb	2,076.1	1,662.5	413.6	47.9	33.4	257.8	79.2	28.6	388.9	202.6	41.0	30.4	22.5	43.0	64.2	22.4	13.2	25.9	361.5	
Oilseeds																				
2005/06	391.6	296.1	95.5	12.9	0.7	23.5	7.4	5.6	57.2	30.6	7.7	5.1	0.5	45.0	59.1	2.5	1.1	2.0	35.2	
2006/07 prel.	406.2	309.6	96.6	12.6	0.6	24.3	8.0	6.8	59.1	29.9	7.9	5.3	0.6	51.6	62.0	1.1	0.6	2.2	37.2	
2007/08 proj.																				
Jan	389.7	309.7	80.0	11.6	0.6	24.1	6.9	5.8	55.2	33.6	8.2	4.6	0.6	52.2	63.5	1.2	1.0	1.9	38.7	
Feb	390.1	310.1	80.0	11.6	0.6	24.2	7.0	6.0	55.6	33.5	8.2	4.7	0.6	52.2	63.6	1.2	1.0	1.9	38.2	
Cotton																				
2005/06	117.7	93.8	23.9	nr	0.6	2.5	nr	nr	29.5	19.1	0.0	10.2	0.0	0.6	4.7	2.8	0.1	3.6	20.1	
2006/07 prel.	122.1	100.5	21.6	nr	0.7	1.6	nr	nr	35.5	21.8	0.0	9.9	0.0	0.8	7.0	1.4	0.1	3.9	17.9	
2007/08 proj.																				
Jan	118.3	99.2	19.0	nr	0.7	1.6	nr	nr	34.5	25.0	0.0	8.2	0.0	0.7	7.0	0.6	0.1	3.3	17.5	
Feb	119.2	100.2	19.0	nr	0.7	1.6	nr	nr	35.5	24.5	0.0	8.6	0.0	0.7	7.2	0.6	0.1	3.3	17.4	

1/ Includes wheat, coarse grains, and rice (milled) shown above.

Table 02 Wheat Area, Yield, and Production
1000 Metric Tons

Country / Region	Area (Million hectares)				Yield (Metric tons per hectare)				Production (Million metric tons)				Change in Production			
	Prel.		2007/08 Proj.		Prel.		2007/08 Proj.		Prel.		2007/08 Proj.		From last month		From last year	
	2005/06	2006/07	Jan	Feb	2005/06	2006/07	Jan	Feb	2005/06	2006/07	Jan	Feb	MMT	Percent	MMT	Percent
World	218.50	212.34	216.77	217.18	2.84	2.79	2.78	2.78	621.46	593.20	603.01	603.59	0.59	0.10	10.40	1.75
United States	20.28	18.94	20.64	20.64	2.82	2.60	2.72	2.72	57.28	49.32	56.25	56.25	0.00	0.00	6.93	14.05
Total Foreign	198.22	193.39	196.13	196.54	2.85	2.81	2.79	2.78	564.18	543.88	546.76	547.35	0.59	0.11	3.46	0.64
China, Peoples	22.79	22.96	23.10	23.10	4.28	4.55	4.59	4.59	97.45	104.47	106.00	106.00	0.00	0.00	1.53	1.46
South Asia																
India	26.50	26.40	28.00	28.00	2.59	2.63	2.67	2.67	68.64	69.35	74.89	74.89	0.00	0.00	5.54	7.99
Pakistan	8.36	8.36	8.40	8.40	2.59	2.60	2.74	2.74	21.61	21.70	23.00	23.00	0.00	0.00	1.30	5.99
Afghanistan	2.35	2.19	2.20	2.20	1.82	1.46	2.00	1.73	4.27	3.20	4.40	3.80	-0.60	-13.64	0.60	18.75
Former Soviet Union																
Russian Federation	25.40	23.70	24.50	24.50	1.88	1.89	2.02	2.02	47.70	44.90	49.40	49.40	0.00	0.00	4.50	10.02
Ukraine	6.57	5.50	6.00	6.00	2.85	2.55	2.30	2.32	18.70	14.00	13.80	13.90	0.10	0.72	-0.10	-0.71
Kazakhstan, Republic	11.80	12.40	12.75	12.75	0.93	1.09	1.25	1.30	11.00	13.50	16.00	16.60	0.60	3.75	3.10	22.96
Uzbekistan, Republic	1.45	1.30	1.30	1.30	4.00	4.50	4.62	4.62	5.80	5.85	6.00	6.00	0.00	0.00	0.15	2.56
EU-27																
France	5.29	5.26	5.27	5.27	6.98	6.74	6.25	6.25	36.90	35.47	32.90	32.90	0.00	0.00	-2.57	-7.24
Germany	3.17	3.12	3.00	3.00	7.46	7.20	6.98	6.98	23.69	22.43	20.94	20.94	0.00	0.00	-1.49	-6.66
United Kingdom	1.87	1.83	1.82	1.82	7.96	8.04	7.34	7.22	14.86	14.74	13.36	13.14	-0.22	-1.65	-1.60	-10.82
Poland	2.22	2.18	2.25	2.25	3.95	3.24	3.73	3.73	8.77	7.06	8.40	8.40	0.00	0.00	1.34	18.98
Spain	2.25	1.96	1.83	1.83	1.70	2.85	3.47	3.47	3.82	5.58	6.35	6.35	0.00	0.00	0.77	13.80
Italy	2.03	1.77	2.03	2.03	3.49	3.68	3.52	3.52	7.08	6.51	7.15	7.15	0.00	0.00	0.64	9.80
Denmark	0.68	0.68	0.69	0.69	7.15	6.95	6.57	6.57	4.83	4.76	4.50	4.50	0.00	0.00	-0.26	-5.38
Hungary	1.13	1.08	1.12	1.11	4.51	4.07	3.57	3.59	5.10	4.38	4.00	3.99	-0.01	-0.30	-0.39	-8.87
Romania	2.10	1.80	1.85	1.85	2.81	2.64	1.57	1.57	5.90	4.75	2.90	2.90	0.00	0.00	-1.85	-38.95
Bulgaria	1.10	0.92	1.00	1.00	3.13	3.45	2.10	2.10	3.44	3.18	2.10	2.10	0.00	0.00	-1.08	-33.90
Canada	9.40	9.68	8.64	8.64	2.74	2.61	2.32	2.32	25.75	25.27	20.05	20.05	0.00	0.00	-5.22	-20.64
Australia	12.46	11.62	12.20	12.20	2.02	0.92	1.07	1.07	25.17	10.64	13.00	13.00	0.00	0.00	2.36	22.17
Middle East																
Turkey	8.60	8.60	8.60	8.60	2.15	2.03	1.80	1.80	18.50	17.50	15.50	15.50	0.00	0.00	-2.00	-11.43
Iran	6.95	6.90	6.90	6.90	2.09	2.14	2.17	2.17	14.50	14.80	15.00	15.00	0.00	0.00	0.20	1.35
Syria	1.70	1.70	1.70	1.70	2.76	2.47	2.35	2.35	4.70	4.20	4.00	4.00	0.00	0.00	-0.20	-4.76
North Africa																
Egypt	1.26	1.29	1.29	1.29	6.50	6.43	6.45	6.45	8.18	8.27	8.32	8.32	0.00	0.00	0.05	0.56
Morocco	2.97	3.11	2.57	2.57	1.03	2.04	0.58	0.58	3.04	6.33	1.50	1.50	0.00	0.00	-4.83	-76.29
Argentina	5.00	5.29	5.20	5.60	2.90	2.88	2.88	2.77	14.50	15.20	15.00	15.50	0.50	3.33	0.30	1.97
Others	22.83	21.81	21.93	21.95	2.64	2.56	2.66	2.67	60.27	55.87	58.30	58.52	0.22	0.38	2.66	4.76

World and Selected Countries and Regions

2/11/2008 2:32:44 PM

Table 03 Total Coarse Grain Area, Yield, and Production
1000 Metric Tons

Country / Region	Area (Million hectares)				Yield (Metric tons per hectare)				Production (Million metric tons)				Change in Production			
	2005/06	Prel. 2006/07	2007/08 Jan	2007/08 Proj. Feb	2005/06	Prel. 2006/07	2007/08 Jan	2007/08 Proj. Feb	2005/06	Prel. 2006/07	2007/08 Jan	2007/08 Proj. Feb	From last month MMT	Percent	From last year MMT	Percent
World	300.78	304.04	314.67	314.65	3.25	3.23	3.34	3.34	977.34	981.81	1,051.5	1,051.91	0.32	0.03	70.10	7.14
United States	34.89	32.53	39.92	39.92	8.56	8.61	8.79	8.79	298.76	280.11	351.06	351.06	0.00	0.00	70.95	25.33
Total Foreign	265.89	271.51	274.75	274.73	2.55	2.58	2.55	2.55	678.57	701.70	700.52	700.85	0.32	0.05	-0.85	-0.12
China, Peoples	29.13	29.82	30.86	30.86	5.07	5.17	4.97	4.97	147.70	154.04	153.40	153.40	0.00	0.00	-0.64	-0.42
South America																
Brazil	14.14	15.15	15.34	15.34	3.12	3.51	3.45	3.45	44.17	53.17	52.86	52.86	0.00	0.00	-0.31	-0.58
Argentina	3.47	4.07	4.36	4.46	5.55	6.77	6.35	5.98	19.22	27.54	27.67	26.67	-1.00	-3.61	-0.87	-3.14
EU-27																
France	3.83	3.72	3.76	3.76	7.08	6.89	7.02	7.02	27.10	25.59	26.41	26.41	0.00	0.00	0.83	3.22
Germany	3.67	3.59	3.58	3.58	6.08	5.87	5.50	5.50	22.29	21.05	19.70	19.70	0.00	0.00	-1.35	-6.42
Poland	6.04	6.12	5.98	5.98	2.99	2.39	3.13	3.13	18.07	14.66	18.70	18.70	0.00	0.00	4.05	27.60
Spain	4.15	4.24	4.26	4.26	2.25	3.07	3.92	3.92	9.32	13.00	16.69	16.69	0.00	0.00	3.69	28.37
Italy	1.64	1.59	1.55	1.55	7.20	7.12	7.30	7.30	11.84	11.29	11.34	11.34	0.00	0.00	0.05	0.48
Hungary	1.78	1.75	1.60	1.67	6.04	5.76	3.45	3.38	10.73	10.06	5.52	5.64	0.13	2.28	-4.42	-43.90
United Kingdom	1.11	1.11	1.11	1.12	5.96	6.30	6.23	6.10	6.63	6.97	6.92	6.85	-0.07	-1.01	-0.13	-1.79
Romania	3.65	3.15	2.44	2.44	3.25	3.06	1.78	1.78	11.88	9.64	4.35	4.35	0.00	0.00	-5.29	-54.85
Former Soviet Union																
Russian Federation	16.20	17.10	17.40	17.40	1.70	1.77	1.64	1.69	27.60	30.20	28.55	29.33	0.78	2.71	-0.88	-2.90
Ukraine	7.19	7.82	7.15	7.15	2.52	2.45	2.09	2.04	18.14	19.18	14.95	14.59	-0.37	-2.44	-4.59	-23.94
Kazakhstan, Republic	1.97	2.17	2.18	2.18	1.03	1.12	1.29	1.38	2.02	2.42	2.82	3.02	0.20	7.10	0.60	24.59
Africa																
Nigeria	17.25	17.95	17.25	17.25	1.43	1.45	1.39	1.39	24.70	26.00	24.00	24.00	0.00	0.00	-2.00	-7.69
South Africa, Republic	2.88	3.78	4.08	4.08	2.54	2.05	2.57	2.81	7.31	7.76	10.48	11.48	1.00	9.54	3.72	47.98
Ethiopia	5.50	5.85	5.75	5.75	1.65	1.89	1.88	1.88	9.09	11.08	10.80	10.80	0.00	0.00	-0.28	-2.48
Egypt	0.93	0.94	0.94	0.94	7.49	7.49	7.49	7.49	6.99	7.00	7.04	7.04	0.00	0.00	0.04	0.57
India	27.86	27.60	28.37	28.37	1.22	1.24	1.26	1.26	34.04	34.16	35.71	35.71	0.00	0.00	1.55	4.54
Southeast Asia																
Indonesia	3.31	3.30	3.40	3.40	1.96	2.03	2.06	2.06	6.50	6.70	7.00	7.00	0.00	0.00	0.30	4.48
Philippines	2.56	2.64	2.65	2.65	2.30	2.36	2.30	2.30	5.88	6.23	6.10	6.10	0.00	0.00	-0.13	-2.09
Thailand	1.15	1.05	1.05	1.05	3.55	3.70	3.75	3.75	4.10	3.89	3.94	3.94	0.00	0.00	0.05	1.29
Mexico	8.58	9.36	9.76	9.51	3.01	3.07	3.09	3.13	25.83	28.73	30.18	29.78	-0.40	-1.33	1.05	3.65
Canada	6.24	6.12	7.39	7.39	4.00	3.78	3.77	3.77	24.97	23.15	27.84	27.84	0.00	0.00	4.70	20.29
Australia	6.25	5.83	6.24	6.24	2.17	1.13	1.49	1.51	13.54	6.58	9.31	9.41	0.10	1.07	2.82	42.91
Turkey	4.56	4.43	4.46	4.46	2.62	2.47	2.25	2.25	11.95	10.95	10.05	10.05	0.00	0.00	-0.90	-8.22
Others	80.87	81.32	81.84	81.88	1.57	1.61	1.57	1.57	126.98	130.70	128.21	128.17	-0.04	-0.03	-2.53	-1.93

World and Selected Countries and Regions

2/11/2008 2:32:55 PM

Table 04 Corn Area, Yield, and Production
1000 Metric Tons

Country / Region	Area (Million hectares)				Yield (Metric tons per hectare)				Production (Million metric tons)				Change in Production			
	Prel.		2007/08 Proj.		Prel.		2007/08 Proj.		Prel.		2007/08 Proj.		From last month		From last year	
	2005/06	2006/07	Jan	Feb	2005/06	2006/07	Jan	Feb	2005/06	2006/07	Jan	Feb	MMT	Percent	MMT	Percent
World	145.59	148.64	157.10	156.96	4.78	4.74	4.88	4.88	696.30	704.17	766.72	766.23	-0.48	-0.06	62.07	8.81
United States	30.40	28.59	35.02	35.02	9.29	9.36	9.48	9.48	282.31	267.60	332.09	332.09	0.00	0.00	64.49	24.10
Total Foreign	115.19	120.05	122.08	121.94	3.59	3.64	3.56	3.56	413.99	436.57	434.62	434.14	-0.48	-0.11	-2.43	-0.56
China, Peoples	26.36	26.97	28.00	28.00	5.29	5.39	5.18	5.18	139.37	145.48	145.00	145.00	0.00	0.00	-0.48	-0.33
South America																
Brazil	12.90	14.00	14.00	14.00	3.23	3.64	3.57	3.57	41.70	51.00	50.00	50.00	0.00	0.00	-1.00	-1.96
Argentina	2.44	2.80	3.00	3.10	6.48	8.04	7.50	6.94	15.80	22.50	22.50	21.50	-1.00	-4.44	-1.00	-4.44
Mexico	6.64	7.40	7.75	7.40	2.94	2.97	2.99	3.04	19.50	22.00	23.20	22.50	-0.70	-3.02	0.50	2.27
EU-27																
France	1.61	1.44	1.50	1.50	8.51	8.44	9.53	9.53	13.68	12.15	14.30	14.30	0.00	0.00	2.15	17.70
Italy	1.11	1.06	1.01	1.01	8.98	8.87	9.41	9.41	10.00	9.40	9.50	9.50	0.00	0.00	0.10	1.06
Hungary	1.20	1.22	1.05	1.12	7.25	6.82	3.71	3.60	8.70	8.28	3.90	4.03	0.13	3.23	-4.26	-51.39
Romania	2.95	2.60	1.90	1.90	3.49	3.27	1.89	1.89	10.30	8.50	3.60	3.60	0.00	0.00	-4.90	-57.65
Poland	0.34	0.30	0.32	0.32	5.74	4.16	5.31	5.31	1.95	1.26	1.70	1.70	0.00	0.00	0.44	34.81
India	7.60	8.30	8.60	8.60	1.94	1.80	1.90	1.90	14.71	14.98	16.30	16.30	0.00	0.00	1.32	8.81
Canada	1.09	1.06	1.37	1.37	8.63	8.47	8.50	8.50	9.36	8.99	11.65	11.65	0.00	0.00	2.66	29.59
Indonesia	3.31	3.30	3.40	3.40	1.96	2.03	2.06	2.06	6.50	6.70	7.00	7.00	0.00	0.00	0.30	4.48
Ukraine	1.66	1.70	1.90	1.90	4.31	3.76	3.89	3.89	7.15	6.40	7.40	7.40	0.00	0.00	1.00	15.63
Serbia	0.00	1.17	1.20	1.20	0.00	5.48	3.58	3.58	0.00	6.42	4.30	4.30	0.00	0.00	-2.12	-32.97
Egypt	0.72	0.73	0.73	0.73	8.19	8.19	8.19	8.19	5.93	5.94	5.98	5.98	0.00	0.00	0.04	0.67
Philippines	2.56	2.64	2.65	2.65	2.30	2.36	2.30	2.30	5.88	6.23	6.10	6.10	0.00	0.00	-0.13	-2.09
Vietnam	1.03	1.15	1.20	1.20	3.70	3.75	3.80	3.80	3.82	4.31	4.56	4.56	0.00	0.00	0.25	5.75
Thailand	1.10	1.00	1.00	1.00	3.64	3.80	3.85	3.85	4.00	3.80	3.85	3.85	0.00	0.00	0.05	1.32
Russian Federation	0.85	1.00	1.30	1.30	3.76	3.60	2.92	3.04	3.20	3.60	3.80	3.95	0.15	3.95	0.35	9.72
Sub-Saharan Africa																
South Africa, Republic	2.03	2.90	3.20	3.20	3.41	2.52	3.13	3.44	6.94	7.30	10.00	11.00	1.00	10.00	3.70	50.68
Nigeria	4.00	4.70	4.00	4.00	1.75	1.66	1.63	1.63	7.00	7.80	6.50	6.50	0.00	0.00	-1.30	-16.67
Ethiopia	2.05	2.18	2.05	2.05	1.95	2.30	2.34	2.34	4.00	5.00	4.80	4.80	0.00	0.00	-0.20	-4.00
Zimbabwe	1.30	1.20	1.30	1.30	0.69	0.50	0.65	0.65	0.90	0.60	0.85	0.85	0.00	0.00	0.25	41.67
Turkey	0.55	0.43	0.45	0.45	6.73	6.59	6.44	6.44	3.70	2.80	2.90	2.90	0.00	0.00	0.10	3.57
Others	29.79	28.82	29.20	29.24	2.35	2.26	2.22	2.22	69.91	65.13	64.93	64.88	-0.06	-0.09	-0.25	-0.39

World and Selected Countries and Regions

2/11/2008 2:32:43 PM

Table 05 Barley Area, Yield, and Production
1000 Metric Tons

Country / Region	Area (Million hectares)				Yield (Metric tons per hectare)				Production (Million metric tons)				Change in Production			
	Prel.		2007/08 Proj.		Prel.		2007/08 Proj.		Prel.		2007/08 Proj.		From last month		From last year	
	2005/06	2006/07	Jan	Feb	2005/06	2006/07	Jan	Feb	2005/06	2006/07	Jan	Feb	MMT	Percent	MMT	Percent
World	55.61	57.05	57.20	57.22	2.46	2.41	2.32	2.32	136.55	137.28	132.83	132.83	-0.01	0.00	-4.46	-3.25
United States	1.32	1.19	1.42	1.42	3.49	3.29	3.25	3.25	4.61	3.92	4.61	4.61	0.00	0.00	0.69	17.56
Total Foreign	54.29	55.86	55.78	55.80	2.43	2.39	2.30	2.30	131.94	133.36	128.22	128.22	-0.01	0.00	-5.15	-3.86
Russian Federation	9.15	10.00	9.80	9.80	1.73	1.81	1.59	1.60	15.80	18.10	15.60	15.65	0.05	0.32	-2.45	-13.54
EU-27																
Germany	1.95	2.03	1.94	1.94	5.97	5.91	5.42	5.42	11.61	11.97	10.48	10.48	0.00	0.00	-1.49	-12.43
France	1.60	1.66	1.67	1.67	6.44	6.31	5.68	5.68	10.32	10.49	9.48	9.48	0.00	0.00	-1.01	-9.59
Spain	3.14	3.23	3.20	3.20	1.42	2.58	3.63	3.63	4.46	8.32	11.60	11.60	0.00	0.00	3.28	39.42
United Kingdom	0.94	0.88	0.88	0.89	5.86	5.95	5.85	5.70	5.50	5.24	5.15	5.08	-0.07	-1.36	-0.16	-3.03
Denmark	0.71	0.67	0.63	0.63	5.39	4.83	4.90	4.90	3.80	3.25	3.09	3.09	0.00	0.00	-0.16	-5.01
Poland	1.11	1.22	1.20	1.20	3.22	2.59	3.33	3.33	3.58	3.16	4.00	4.00	0.00	0.00	0.84	26.54
Czech Republic	0.52	0.53	0.50	0.50	4.21	3.59	3.84	3.84	2.20	1.90	1.92	1.92	0.00	0.00	0.02	1.16
Finland	0.59	0.56	0.57	0.57	3.54	3.48	3.61	3.50	2.10	1.96	2.04	1.98	-0.06	-2.94	0.02	1.02
Sweden	0.37	0.31	0.33	0.33	4.28	3.63	4.43	4.43	1.59	1.11	1.44	1.44	0.00	0.00	0.33	29.38
Italy	0.32	0.33	0.34	0.34	3.79	3.89	3.53	3.53	1.21	1.27	1.20	1.20	0.00	0.00	-0.07	-5.59
Hungary	0.32	0.29	0.32	0.32	3.79	3.68	3.27	3.27	1.20	1.08	1.04	1.04	0.00	0.00	-0.04	-3.79
Austria	0.19	0.21	0.19	0.19	4.60	4.43	4.26	4.26	0.88	0.91	0.81	0.81	0.00	0.00	-0.10	-11.28
Ukraine	4.35	5.20	4.40	4.40	2.07	2.18	1.41	1.36	9.00	11.35	6.20	6.00	-0.20	-3.23	-5.35	-47.14
Canada	3.63	3.22	4.00	4.00	3.21	2.97	2.75	2.75	11.68	9.57	11.00	11.00	0.00	0.00	1.43	14.91
Australia	4.41	4.10	4.40	4.40	2.15	1.02	1.32	1.32	9.48	4.18	5.80	5.80	0.00	0.00	1.62	38.89
Turkey	3.60	3.60	3.60	3.60	2.11	2.08	1.81	1.81	7.60	7.50	6.50	6.50	0.00	0.00	-1.00	-13.33
China, Peoples	0.85	0.88	0.86	0.86	4.00	3.98	3.95	3.95	3.40	3.50	3.40	3.40	0.00	0.00	-0.10	-2.86
Iran	1.66	1.70	1.70	1.70	1.75	1.71	1.76	1.76	2.90	2.90	3.00	3.00	0.00	0.00	0.10	3.45
Morocco	2.18	2.19	1.99	1.99	0.51	1.16	0.27	0.27	1.10	2.54	0.54	0.54	0.00	0.00	-2.00	-78.70
Kazakhstan,	1.60	1.80	1.80	1.80	0.94	1.06	1.28	1.39	1.50	1.90	2.30	2.50	0.20	8.70	0.60	31.58
Ethiopia	1.18	1.33	1.30	1.30	1.51	1.60	1.62	1.62	1.79	2.13	2.10	2.10	0.00	0.00	-0.03	-1.18
Belarus	0.60	0.55	0.65	0.65	3.00	2.45	2.46	2.62	1.80	1.35	1.60	1.70	0.10	6.25	0.35	25.93
India	0.76	0.70	0.77	0.77	1.59	1.74	1.70	1.70	1.20	1.22	1.31	1.31	0.00	0.00	0.09	7.38
Argentina	0.27	0.34	0.35	0.35	3.02	3.76	3.43	3.43	0.80	1.27	1.20	1.20	0.00	0.00	-0.07	-5.14
Mexico	0.31	0.35	0.35	0.35	2.46	2.57	2.57	2.57	0.75	0.90	0.90	0.90	0.00	0.00	0.00	0.00
Iraq	1.14	1.03	1.00	1.00	0.66	0.90	0.80	0.80	0.75	0.92	0.80	0.80	0.00	0.00	-0.12	-13.04
Algeria	0.70	0.70	0.70	0.70	0.57	1.00	1.00	1.00	0.40	0.70	0.70	0.70	0.00	0.00	0.00	0.00
Others	6.15	6.26	6.36	6.37	2.20	2.03	2.05	2.04	13.53	12.69	13.02	13.00	-0.03	-0.20	0.31	2.44

World and Selected Countries and Regions

2/11/2008 2:32:44 PM

Table 06 Oats Area, Yield, and Production
1000 Metric Tons

Country / Region	Area (Million hectares)				Yield (Metric tons per hectare)				Production (Million metric tons)				Change in Production			
	Prel.		2007/08 Proj.		Prel.		2007/08 Proj.		Prel.		2007/08 Proj.		From last month		From last year	
	2005/06	2006/07	Jan	Feb	2005/06	2006/07	Jan	Feb	2005/06	2006/07	Jan	Feb	MMT	Percent	MMT	Percent
World	12.50	12.99	13.28	13.28	1.91	1.78	1.92	1.94	23.86	23.11	25.43	25.73	0.30	1.18	2.63	11.37
United States	0.74	0.63	0.61	0.61	2.26	2.14	2.18	2.18	1.67	1.36	1.33	1.33	0.00	0.00	-0.03	-2.13
Total Foreign	11.76	12.36	12.67	12.67	1.89	1.76	1.90	1.93	22.19	21.75	24.10	24.40	0.30	1.24	2.66	12.21
Russian Federation	3.35	3.60	3.70	3.70	1.36	1.36	1.35	1.46	4.55	4.90	5.00	5.40	0.40	8.00	0.50	10.20
Canada	1.27	1.54	1.81	1.81	2.58	2.51	2.60	2.60	3.28	3.85	4.70	4.70	0.00	0.00	0.85	22.01
EU-27																
Poland	0.54	0.54	0.56	0.56	2.46	1.92	2.68	2.68	1.32	1.04	1.50	1.50	0.00	0.00	0.47	44.93
Finland	0.35	0.35	0.36	0.36	3.11	2.92	3.50	3.50	1.07	1.03	1.26	1.26	0.00	0.00	0.23	22.45
Spain	0.45	0.50	0.53	0.53	1.18	1.83	2.42	2.42	0.53	0.92	1.27	1.27	0.00	0.00	0.35	38.04
Germany	0.21	0.18	0.18	0.18	4.59	4.51	4.14	4.14	0.96	0.83	0.73	0.73	0.00	0.00	-0.11	-12.65
Sweden	0.19	0.20	0.21	0.21	3.87	3.18	4.38	4.38	0.75	0.64	0.92	0.92	0.00	0.00	0.28	44.65
United Kingdom	0.09	0.12	0.13	0.13	5.85	6.02	5.62	5.62	0.53	0.73	0.73	0.73	0.00	0.00	0.00	0.27
France	0.11	0.11	0.11	0.11	4.56	4.34	3.81	3.81	0.51	0.46	0.40	0.40	0.00	0.00	-0.06	-13.79
Italy	0.18	0.16	0.16	0.16	2.45	2.45	2.50	2.50	0.43	0.39	0.40	0.40	0.00	0.00	0.01	3.36
Denmark	0.07	0.07	0.06	0.06	4.57	4.06	4.73	4.73	0.32	0.28	0.30	0.30	0.00	0.00	0.01	4.93
Romania	0.22	0.20	0.20	0.20	1.79	1.71	1.25	1.25	0.39	0.35	0.25	0.25	0.00	0.00	-0.10	-28.16
Czech Republic	0.05	0.06	0.06	0.06	2.90	2.67	2.83	2.83	0.15	0.16	0.17	0.17	0.00	0.00	0.02	9.68
Hungary	0.06	0.06	0.06	0.06	2.53	2.46	2.00	2.00	0.16	0.15	0.12	0.12	0.00	0.00	-0.03	-20.00
Austria	0.03	0.04	0.03	0.03	4.30	3.74	3.17	3.17	0.13	0.13	0.10	0.10	0.00	0.00	-0.04	-27.48
Ireland	0.02	0.02	0.02	0.02	7.29	7.35	7.94	7.94	0.12	0.13	0.14	0.14	0.00	0.00	0.01	8.00
Lithuania	0.06	0.06	0.06	0.06	1.90	1.07	1.83	1.83	0.11	0.06	0.11	0.11	0.00	0.00	0.05	74.60
Australia	0.93	0.98	0.90	0.90	1.82	0.75	1.11	1.11	1.69	0.73	1.00	1.00	0.00	0.00	0.27	36.43
Ukraine	0.45	0.44	0.40	0.40	1.78	1.59	1.63	1.38	0.80	0.70	0.65	0.55	-0.10	-15.38	-0.15	-21.43
China, Peoples	0.50	0.50	0.50	0.50	1.20	1.20	1.20	1.20	0.60	0.60	0.60	0.60	0.00	0.00	0.00	0.00
Belarus	0.25	0.25	0.25	0.25	2.40	2.20	2.40	2.40	0.60	0.55	0.60	0.60	0.00	0.00	0.05	9.09
Brazil	0.36	0.35	0.35	0.35	1.45	1.36	1.36	1.36	0.52	0.48	0.48	0.48	0.00	0.00	0.00	0.00
Argentina	0.23	0.25	0.25	0.25	1.52	1.60	1.60	1.60	0.35	0.40	0.40	0.40	0.00	0.00	0.00	0.00
Chile	0.09	0.08	0.08	0.08	4.67	4.75	4.75	4.75	0.42	0.38	0.38	0.38	0.00	0.00	0.00	0.00
Norway	0.09	0.09	0.09	0.09	4.19	4.19	4.19	4.19	0.36	0.36	0.36	0.36	0.00	0.00	0.00	0.00
Turkey	0.16	0.16	0.16	0.16	1.87	1.87	1.87	1.87	0.29	0.29	0.29	0.29	0.00	0.00	0.00	0.00
Kazakhstan,	0.14	0.14	0.16	0.16	1.00	1.00	1.00	1.00	0.14	0.14	0.16	0.16	0.00	0.00	0.02	14.29
Serbia	0.00	0.07	0.07	0.07	0.00	1.85	1.85	1.85	0.00	0.12	0.12	0.12	0.00	0.00	0.00	0.00
Others	1.33	1.26	1.25	1.25	0.83	0.76	0.79	0.79	1.11	0.96	0.98	0.98	0.00	0.00	0.02	2.39

World and Selected Countries and Regions

2/11/2008 2:32:47 PM

Table 07 Rye Area, Yield, and Production
1000 Metric Tons

Country / Region	Area (Million hectares)				Yield (Metric tons per hectare)				Production (Million metric tons)				Change in Production			
	Prel.		2007/08 Proj.		Prel.		2007/08 Proj.		Prel.		2007/08 Proj.		From last month		From last year	
	2005/06	2006/07	Jan	Feb	2005/06	2006/07	Jan	Feb	2005/06	2006/07	Jan	Feb	MMT	Percent	MMT	Percent
World	6.77	5.68	6.31	6.31	2.14	2.18	2.23	2.26	14.49	12.38	14.10	14.25	0.15	1.06	1.87	15.14
United States	0.11	0.11	0.12	0.12	1.69	1.65	1.72	1.72	0.19	0.18	0.20	0.20	0.00	0.00	0.02	9.84
Total Foreign	6.65	5.57	6.20	6.20	2.15	2.19	2.24	2.27	14.30	12.19	13.90	14.05	0.15	1.08	1.86	15.22
EU-27																
Poland	1.42	1.32	1.40	1.40	2.41	1.99	2.21	2.21	3.40	2.62	3.10	3.10	0.00	0.00	0.48	18.23
Germany	0.55	0.54	0.68	0.68	5.09	4.91	4.01	4.01	2.79	2.64	2.71	2.71	0.00	0.00	0.07	2.50
Spain	0.09	0.10	0.12	0.12	1.40	1.61	2.17	2.17	0.13	0.16	0.25	0.25	0.00	0.00	0.09	57.23
Lithuania	0.05	0.05	0.07	0.07	2.12	1.76	2.43	2.43	0.11	0.09	0.17	0.17	0.00	0.00	0.08	88.89
Latvia	0.04	0.04	0.06	0.06	2.23	2.93	2.83	2.83	0.09	0.12	0.17	0.17	0.00	0.00	0.05	45.30
France	0.03	0.03	0.03	0.03	4.74	4.52	4.62	4.62	0.15	0.12	0.12	0.12	0.00	0.00	0.00	-1.64
Denmark	0.03	0.03	0.03	0.03	4.89	4.89	4.60	4.60	0.13	0.13	0.14	0.14	0.00	0.00	0.01	4.55
Czech Republic	0.05	0.02	0.04	0.04	4.19	3.41	4.27	4.27	0.20	0.08	0.18	0.18	0.00	0.00	0.10	133.33
Austria	0.04	0.03	0.05	0.05	3.79	3.48	4.11	4.11	0.16	0.09	0.19	0.19	0.00	0.00	0.09	96.81
Sweden	0.02	0.02	0.03	0.03	5.33	4.92	5.40	5.40	0.11	0.12	0.14	0.14	0.00	0.00	0.02	14.41
Hungary	0.04	0.04	0.04	0.04	2.49	2.44	2.02	2.02	0.11	0.10	0.09	0.09	0.00	0.00	-0.01	-10.53
Slovakia	0.02	0.01	0.02	0.02	2.88	2.46	3.00	3.00	0.07	0.03	0.06	0.06	0.00	0.00	0.03	87.50
Finland	0.01	0.02	0.03	0.03	2.29	2.32	2.83	2.83	0.03	0.05	0.09	0.09	0.00	0.00	0.03	66.67
United Kingdom	0.01	0.01	0.01	0.01	4.90	4.90	5.38	5.38	0.05	0.05	0.04	0.04	0.00	0.00	-0.01	-12.24
Romania	0.02	0.02	0.01	0.01	2.45	1.94	2.00	2.00	0.05	0.03	0.03	0.03	0.00	0.00	-0.01	-21.21
Greece	0.01	0.01	0.01	0.01	1.85	1.79	1.71	1.71	0.02	0.03	0.02	0.02	0.00	0.00	0.00	-4.00
Portugal	0.03	0.02	0.02	0.02	0.74	0.82	0.91	0.91	0.02	0.02	0.02	0.02	0.00	0.00	0.00	11.11
Russian Federation	2.35	1.80	2.10	2.10	1.53	1.67	1.76	1.86	3.60	3.00	3.70	3.90	0.20	5.41	0.90	30.00
Belarus	0.70	0.55	0.60	0.60	1.64	2.18	2.17	2.17	1.15	1.20	1.30	1.30	0.00	0.00	0.10	8.33
Ukraine	0.61	0.36	0.35	0.35	1.72	1.67	1.71	1.57	1.05	0.60	0.60	0.55	-0.05	-8.33	-0.05	-8.33
Canada	0.14	0.16	0.11	0.11	2.43	2.34	2.09	2.09	0.33	0.38	0.23	0.23	0.00	0.00	-0.15	-39.95
Turkey	0.15	0.15	0.15	0.15	1.60	1.60	1.60	1.60	0.24	0.24	0.24	0.24	0.00	0.00	0.00	0.00
Argentina	0.05	0.05	0.05	0.05	1.15	1.15	1.15	1.15	0.06	0.06	0.06	0.06	0.00	0.00	0.00	0.00
Kazakhstan,	0.07	0.07	0.07	0.07	0.71	0.71	0.71	0.71	0.05	0.05	0.05	0.05	0.00	0.00	0.00	0.00
Australia	0.04	0.04	0.04	0.04	0.57	0.57	0.57	0.57	0.02	0.02	0.02	0.02	0.00	0.00	0.00	0.00
Switzerland	0.00	0.00	0.00	0.00	6.67	6.67	6.67	6.67	0.02	0.02	0.02	0.02	0.00	0.00	0.00	0.00
Others	0.09	0.08	0.10	0.10	1.92	1.85	1.99	1.99	0.17	0.15	0.19	0.19	0.00	0.00	0.04	26.00

World and Selected Countries and Regions

2/11/2008 2:32:47 PM

Table 08 Sorghum Area, Yield, and Production
1000 Metric Tons

Country / Region	Area (Million hectares)				Yield (Metric tons per hectare)				Production (Million metric tons)				Change in Production			
	2005/06	Prel. 2006/07	2007/08 Proj.		2005/06	Prel. 2006/07	2007/08 Proj.		2005/06	Prel. 2006/07	2007/08 Proj.		From last month		From last year	
			Jan	Feb			Jan	Feb			Jan	Feb	MMT	Percent	MMT	Percent
World	39.84	40.06	41.04	41.14	1.47	1.44	1.57	1.57	58.40	57.85	64.23	64.63	0.40	0.62	6.78	11.73
United States	2.32	2.00	2.75	2.75	4.30	3.53	4.66	4.66	9.98	7.05	12.83	12.83	0.00	0.00	5.78	81.94
Total Foreign	37.52	38.06	38.28	38.38	1.29	1.33	1.34	1.35	48.42	50.80	51.40	51.80	0.40	0.78	1.01	1.98
Sub-Saharan Africa																
Nigeria	7.40	7.40	7.40	7.40	1.42	1.42	1.35	1.35	10.50	10.50	10.00	10.00	0.00	0.00	-0.50	-4.76
Sudan	6.45	6.75	6.60	6.60	0.66	0.77	0.68	0.68	4.28	5.20	4.50	4.50	0.00	0.00	-0.70	-13.46
Ethiopia	1.75	1.88	1.88	1.88	1.60	1.77	1.76	1.76	2.80	3.33	3.30	3.30	0.00	0.00	-0.03	-0.75
Burkina	1.45	1.45	1.45	1.45	1.27	1.24	1.24	1.24	1.84	1.80	1.80	1.80	0.00	0.00	0.00	0.00
Tanzania, United	0.89	0.89	0.90	0.90	1.00	0.96	1.00	1.00	0.89	0.85	0.90	0.90	0.00	0.00	0.05	5.88
Niger	1.50	1.50	1.50	1.50	0.50	0.53	0.53	0.53	0.75	0.80	0.80	0.80	0.00	0.00	0.00	0.00
Uganda	0.30	0.31	0.31	0.31	1.53	1.58	1.58	1.58	0.45	0.49	0.49	0.49	0.00	0.00	0.00	0.00
Mozambique	0.49	0.50	0.50	0.50	0.66	0.70	0.70	0.70	0.33	0.35	0.35	0.35	0.00	0.00	0.00	0.00
Ghana	0.34	0.34	0.34	0.34	1.03	1.18	1.03	1.03	0.35	0.40	0.35	0.35	0.00	0.00	-0.05	-12.50
South Africa, Republic	0.04	0.07	0.09	0.09	2.59	2.51	2.56	2.56	0.10	0.18	0.23	0.23	0.00	0.00	0.05	30.68
South Asia																
India	9.00	9.10	9.00	9.00	0.85	0.81	0.84	0.84	7.63	7.40	7.60	7.60	0.00	0.00	0.20	2.70
Pakistan	0.40	0.40	0.40	0.40	0.58	0.58	0.58	0.58	0.23	0.23	0.23	0.23	0.00	0.00	0.00	0.00
Mexico	1.57	1.55	1.60	1.70	3.50	3.71	3.75	3.71	5.50	5.75	6.00	6.30	0.30	5.00	0.55	9.57
China, Peoples	0.57	0.59	0.60	0.60	4.47	4.58	4.33	4.33	2.55	2.70	2.60	2.60	0.00	0.00	-0.10	-3.70
Australia	0.77	0.64	0.80	0.80	2.52	2.15	2.63	2.75	1.93	1.37	2.10	2.20	0.10	4.76	0.83	60.94
Egypt	0.16	0.16	0.16	0.16	5.63	5.63	5.63	5.63	0.90	0.90	0.90	0.90	0.00	0.00	0.00	0.00
EU-27																
France	0.05	0.06	0.05	0.05	5.23	5.48	5.96	5.96	0.27	0.31	0.31	0.31	0.00	0.00	0.00	0.98
Italy	0.03	0.04	0.04	0.04	5.78	5.74	5.75	5.75	0.19	0.22	0.23	0.23	0.00	0.00	0.01	5.50
Others	4.37	4.44	4.67	4.67	1.59	1.81	1.87	1.87	6.95	8.03	8.71	8.71	0.00	0.00	0.68	8.45

World and Selected Countries and Regions

2/11/2008 2:32:46 PM

Table 09 Rice Area, Yield, and Production
1000 Metric Tons

Country / Region	Area (Million hectares)				Yield (Metric tons per hectare)				Production (Million metric tons)				Change in Production			
	2005/06	Prel. 2006/07	2007/08 Jan	2007/08 Proj. Feb	2005/06	Prel. 2006/07	2007/08 Jan	2007/08 Proj. Feb	2005/06	Prel. 2006/07	2007/08 Jan	2007/08 Proj. Feb	From last month MMT	Percent	From last year MMT	Percent
World	152.61	152.98	153.63	153.66	4.08	4.07	4.08	4.08	417.64	417.66	420.62	420.63	0.01	0.00	2.97	0.71
United States	1.36	1.14	1.11	1.11	7.44	7.68	8.05	8.05	7.11	6.24	6.31	6.31	0.00	0.00	0.08	1.20
Total Foreign	151.24	151.84	152.52	152.55	4.05	4.04	4.05	4.05	410.53	411.42	414.30	414.32	0.01	0.00	2.90	0.70
East Asia																
China, Peoples	28.85	29.30	29.60	29.60	6.26	6.23	6.25	6.25	126.41	127.80	129.50	129.50	0.00	0.00	1.70	1.33
Japan	1.71	1.69	1.65	1.65	6.65	6.34	6.61	6.61	8.26	7.79	7.94	7.94	0.00	0.00	0.16	2.02
Korea, Republic of	0.98	0.96	0.95	0.95	6.57	6.62	6.27	6.27	4.77	4.68	4.41	4.41	0.00	0.00	-0.27	-5.81
Korea, Democratic	0.59	0.59	0.59	0.59	4.21	4.08	3.81	3.81	1.60	1.55	1.45	1.45	0.00	0.00	-0.10	-6.45
South Asia																
India	43.40	44.00	44.00	44.00	3.17	3.16	3.14	3.14	91.79	92.76	92.00	92.00	0.00	0.00	-0.76	-0.82
Bangladesh	11.10	11.20	11.09	11.09	3.89	3.88	3.86	3.86	28.76	29.00	28.50	28.50	0.00	0.00	-0.50	-1.72
Pakistan	2.62	2.58	2.55	2.55	3.18	3.03	3.18	3.18	5.55	5.20	5.40	5.40	0.00	0.00	0.20	3.85
Southeast Asia																
Indonesia	11.80	11.40	11.60	11.60	4.59	4.53	4.54	4.54	34.96	33.30	34.00	34.00	0.00	0.00	0.70	2.10
Vietnam	7.31	7.21	7.25	7.25	4.72	4.81	4.86	4.86	22.77	22.89	23.26	23.26	0.00	0.00	0.37	1.60
Thailand	10.22	10.27	10.36	10.36	2.70	2.69	2.72	2.72	18.20	18.25	18.60	18.60	0.00	0.00	0.35	1.92
Burma, Union of	7.00	7.00	7.00	7.00	2.57	2.61	2.63	2.63	10.44	10.60	10.66	10.66	0.00	0.00	0.06	0.57
Philippines	4.16	4.18	4.20	4.20	3.63	3.71	3.67	3.67	9.82	10.09	10.01	10.01	0.00	0.00	-0.08	-0.74
Cambodia	2.40	2.40	2.45	2.45	2.50	2.25	2.64	2.64	3.78	4.00	4.08	4.08	0.00	0.00	0.08	1.88
Laos	0.74	0.76	0.76	0.76	3.49	3.49	3.49	3.49	1.54	1.59	1.59	1.59	0.00	0.00	0.00	0.00
Malaysia	0.66	0.65	0.66	0.66	3.36	3.34	3.38	3.38	1.44	1.40	1.45	1.45	0.00	0.00	0.05	3.57
South America																
Brazil	3.00	2.98	3.00	3.00	3.86	3.81	3.92	3.92	7.87	7.70	7.99	7.99	0.00	0.00	0.29	3.77
Peru	0.34	0.35	0.35	0.35	6.78	6.63	7.04	7.04	1.59	1.60	1.70	1.70	0.00	0.00	0.10	6.25
Sub-Saharan Africa																
Nigeria	2.00	2.05	2.20	2.20	2.25	2.36	2.27	2.27	2.70	2.90	3.00	3.00	0.00	0.00	0.10	3.45
Madagascar	1.35	1.35	1.35	1.35	2.52	2.59	2.67	2.67	2.18	2.24	2.30	2.30	0.00	0.00	0.06	2.86
EU-27																
Italy	0.22	0.23	0.23	0.23	6.45	6.28	6.28	6.28	0.88	0.87	0.87	0.87	0.00	0.00	0.00	0.00
Spain	0.12	0.11	0.10	0.10	6.92	7.04	7.09	7.25	0.58	0.52	0.51	0.52	0.01	2.17	-0.01	-0.96
Egypt	0.67	0.68	0.68	0.68	9.52	9.99	10.04	9.98	4.14	4.38	4.41	4.38	-0.03	-0.61	0.00	-0.07
Iran	0.63	0.63	0.63	0.63	4.37	4.76	5.24	5.24	1.82	1.98	2.18	2.18	0.00	0.00	0.20	10.00
Others	9.39	9.31	9.28	9.31	3.05	3.02	3.06	3.06	18.70	18.33	18.50	18.53	0.03	0.16	0.20	1.10

World and Selected Countries and Regions
Yield is on a rough basis, before the milling process
Production is on a milled basis, after the milling process

2/11/2008 2:32:47 PM

**Table 10 5-Major Oilseeds; Area, Yield, and Production 1/
1000 Metric Tons**

Country / Region	Area (Million hectares)				Yield (Metric tons per hectare)				Production (Million metric tons)				Change in Production			
	Prel.		2007/08 Proj.		Prel.		2007/08 Proj.		Prel.		2007/08 Proj.		From last month		From last year	
	2005/06	2006/07	Jan	Feb	2005/06	2006/07	Jan	Feb	2005/06	2006/07	Jan	Feb	MMT	Percent	MMT	Percent
World	199.11	199.68	197.01	197.26	1.89	1.96	1.90	1.89	376.15	390.70	373.42	373.79	0.37	0.10	-16.91	-4.33
United States	36.59	36.96	31.44	31.44	2.61	2.61	2.55	2.55	95.53	96.61	80.01	80.01	0.00	0.00	-16.60	-17.19
Total Foreign	162.52	162.72	165.57	165.82	1.73	1.81	1.77	1.77	280.62	294.09	293.41	293.78	0.37	0.13	-0.31	-0.10
South America																
Brazil	23.26	21.99	22.82	22.84	2.54	2.82	2.78	2.78	59.10	61.98	63.46	63.53	0.08	0.12	1.56	2.51
Argentina	17.87	18.90	20.00	20.00	2.52	2.73	2.61	2.61	45.03	51.56	52.24	52.24	0.00	0.00	0.68	1.31
Paraguay	2.76	2.75	3.18	3.18	1.40	2.41	2.35	2.35	3.88	6.61	7.48	7.48	0.00	0.00	0.87	13.17
Bolivia	1.11	1.01	1.12	1.10	2.01	1.80	2.03	1.80	2.23	1.82	2.27	1.98	-0.29	-12.78	0.16	8.79
Uruguay	0.37	0.41	0.42	0.42	1.94	2.01	1.99	1.99	0.71	0.82	0.83	0.83	0.00	0.00	0.01	1.58
China, Peoples	28.05	27.73	26.99	26.99	2.04	2.13	2.05	2.06	57.23	59.09	55.22	55.61	0.39	0.71	-3.48	-5.89
South Asia																
India	33.32	31.98	33.00	33.20	0.90	0.92	1.00	0.99	29.94	29.28	32.85	32.75	-0.10	-0.30	3.47	11.84
Pakistan	3.76	4.01	4.07	4.07	1.34	1.31	1.13	1.15	5.05	5.25	4.59	4.69	0.10	2.18	-0.57	-10.77
Former Soviet Union																
Russian Federation	6.30	7.20	6.40	6.40	1.18	1.11	1.09	1.09	7.44	8.02	6.95	7.00	0.05	0.72	-1.02	-12.73
Ukraine	4.31	5.00	4.93	4.93	1.30	1.36	1.17	1.21	5.60	6.79	5.75	5.95	0.20	3.48	-0.84	-12.37
Uzbekistan, Republic	1.43	1.43	1.45	1.45	1.75	1.61	1.62	1.66	2.50	2.30	2.35	2.40	0.05	2.13	0.10	4.35
Canada	6.53	6.52	7.16	7.16	1.98	1.94	1.62	1.62	12.91	12.61	11.58	11.58	0.00	0.00	-1.04	-8.21
EU-27																
France	1.93	2.09	2.17	2.16	3.19	2.68	2.76	2.78	6.15	5.61	5.98	6.00	0.02	0.33	0.39	7.03
Germany	1.37	1.46	1.57	1.57	3.73	3.70	3.41	3.41	5.12	5.40	5.35	5.35	0.00	0.00	-0.05	-0.96
United Kingdom	0.59	0.58	0.62	0.68	3.21	3.28	3.23	3.10	1.90	1.89	2.00	2.11	0.11	5.50	0.22	11.64
Romania	1.15	1.34	1.27	1.27	1.50	1.52	0.77	0.77	1.73	2.05	0.98	0.98	0.00	0.00	-1.07	-52.42
Czech Republic	0.32	0.35	0.38	0.38	2.79	2.86	3.00	3.00	0.88	1.00	1.12	1.12	0.00	0.00	0.13	12.51
Hungary	0.66	0.71	0.72	0.72	2.22	2.25	1.85	1.85	1.46	1.60	1.34	1.34	0.00	0.00	-0.26	-16.30
Poland	0.55	0.63	0.81	0.81	2.63	2.63	2.62	2.62	1.46	1.66	2.11	2.11	0.00	0.00	0.45	27.16
Italy	0.29	0.33	0.26	0.26	2.98	2.65	2.90	2.90	0.85	0.87	0.74	0.74	0.00	0.00	-0.13	-14.45
Australia	1.44	0.92	0.98	0.98	1.72	1.16	1.27	1.27	2.49	1.07	1.24	1.24	0.00	0.00	0.18	16.81
Turkey	1.07	1.16	1.08	1.07	1.88	1.92	1.75	1.74	2.01	2.24	1.89	1.87	-0.02	-1.06	-0.36	-16.29
Sub-Saharan Africa																
Nigeria	2.04	2.05	2.08	2.08	1.04	1.04	1.05	1.05	2.12	2.13	2.19	2.19	0.00	0.00	0.06	2.86
South Africa, Republic	0.78	0.55	0.73	0.73	1.37	1.09	1.35	1.35	1.07	0.60	0.99	0.99	0.00	0.00	0.39	64.29
Southeast Asia																
Indonesia	1.40	1.38	1.33	1.33	1.44	1.47	1.46	1.46	2.02	2.03	1.94	1.94	0.00	0.00	-0.09	-4.19
Others	19.85	20.25	20.06	20.06	1.00	0.98	1.00	0.99	19.76	19.84	19.99	19.78	-0.21	-1.06	-0.06	-0.30

World and Selected Countries and Regions
1/ (soybeans, sunflowerseed, rapeseed, cottonseed, and peanuts)

2/11/2008 2:32:45 PM

Table 11 Soybean Area, Yield, and Production
1000 Metric Tons

Country / Region	Area (Million hectares)				Yield (Metric tons per hectare)				Production (Million metric tons)				Change in Production			
	Prel.		2007/08 Proj.		Prel.		2007/08 Proj.		Prel.		2007/08 Proj.		From last month		From last year	
	2005/06	2006/07	Jan	Feb	2005/06	2006/07	Jan	Feb	2005/06	2006/07	Jan	Feb	MMT	Percent	MMT	Percent
World	92.92	93.89	91.30	91.29	2.37	2.51	2.41	2.41	220.44	235.54	220.35	220.08	-0.27	-0.12	-15.47	-6.57
United States	28.83	30.19	25.42	25.42	2.91	2.87	2.77	2.77	83.37	86.77	70.36	70.36	0.00	0.00	-16.41	-18.91
Total Foreign	64.08	63.70	65.88	65.87	2.14	2.34	2.28	2.27	137.07	148.77	149.99	149.72	-0.27	-0.18	0.95	0.64
South America																
Brazil	22.23	20.70	21.50	21.50	2.56	2.85	2.81	2.81	57.00	59.00	60.50	60.50	0.00	0.00	1.50	2.54
Argentina	15.20	15.90	16.80	16.80	2.66	2.97	2.80	2.80	40.50	47.20	47.00	47.00	0.00	0.00	-0.20	-0.42
Paraguay	2.43	2.40	2.80	2.80	1.50	2.58	2.50	2.50	3.64	6.20	7.00	7.00	0.00	0.00	0.80	12.90
Bolivia	0.95	0.85	0.96	0.96	2.17	1.94	2.19	1.93	2.06	1.65	2.10	1.85	-0.25	-11.90	0.20	12.12
Uruguay	0.31	0.37	0.40	0.40	2.05	2.13	2.03	2.03	0.63	0.78	0.81	0.81	0.00	0.00	0.03	4.11
East Asia																
China, Peoples	9.59	9.28	8.70	8.70	1.70	1.72	1.64	1.64	16.35	15.97	14.30	14.30	0.00	0.00	-1.67	-10.44
Korea, Republic of	0.11	0.09	0.09	0.09	1.74	1.73	1.65	1.65	0.18	0.16	0.14	0.14	0.00	0.00	-0.02	-10.26
Korea, Democratic	0.14	0.14	0.14	0.14	1.26	1.19	1.19	1.19	0.17	0.16	0.16	0.16	0.00	0.00	0.00	0.00
Japan	0.13	0.14	0.15	0.15	1.69	1.58	1.50	1.50	0.23	0.23	0.23	0.23	0.00	0.00	0.00	0.00
India	7.80	8.12	8.80	8.80	0.90	0.95	1.05	1.05	7.00	7.69	9.20	9.20	0.00	0.00	1.51	19.64
Canada	1.17	1.20	1.17	1.17	2.70	2.88	2.31	2.31	3.16	3.46	2.70	2.70	0.00	0.00	-0.76	-21.97
Former Soviet Union																
Ukraine	0.43	0.71	0.63	0.63	1.43	1.25	1.03	1.03	0.61	0.89	0.65	0.65	0.00	0.00	-0.24	-26.97
Russian Federation	0.66	0.82	0.85	0.85	1.05	0.91	0.92	0.92	0.69	0.74	0.78	0.78	0.00	0.00	0.04	5.41
Southeast Asia																
Indonesia	0.65	0.62	0.60	0.60	1.28	1.31	1.30	1.30	0.83	0.82	0.78	0.78	0.00	0.00	-0.04	-4.29
Vietnam	0.20	0.21	0.28	0.28	1.43	1.47	1.46	1.46	0.29	0.31	0.41	0.41	0.00	0.00	0.10	32.69
Thailand	0.14	0.15	0.15	0.15	1.57	1.45	1.52	1.52	0.23	0.21	0.22	0.22	0.00	0.00	0.01	4.76
Burma, Union of	0.16	0.15	0.15	0.15	1.21	1.17	1.17	1.17	0.19	0.18	0.18	0.18	0.00	0.00	0.00	0.00
EU-27																
Italy	0.15	0.18	0.14	0.14	3.64	3.10	3.30	3.30	0.55	0.55	0.45	0.45	0.00	0.00	-0.11	-19.24
France	0.06	0.05	0.04	0.04	2.49	2.73	2.86	2.86	0.14	0.12	0.10	0.10	0.00	0.00	-0.02	-18.70
Sub-Saharan Africa																
South Africa, Republic	0.24	0.18	0.17	0.17	1.77	1.13	1.76	1.76	0.42	0.21	0.29	0.29	0.00	0.00	0.08	40.78
Nigeria	0.42	0.43	0.44	0.44	1.02	1.02	1.02	1.02	0.43	0.44	0.45	0.45	0.00	0.00	0.01	2.27
Uganda	0.15	0.15	0.15	0.15	1.10	1.10	1.10	1.10	0.17	0.17	0.17	0.17	0.00	0.00	0.00	0.00
Serbia	0.00	0.17	0.15	0.15	0.00	2.12	2.20	2.20	0.00	0.35	0.33	0.33	0.00	0.00	-0.02	-5.71
Mexico	0.09	0.05	0.07	0.07	1.99	1.48	1.54	1.54	0.19	0.08	0.10	0.10	0.00	0.00	0.02	25.00
Iran	0.08	0.08	0.08	0.08	1.38	1.38	1.38	1.38	0.11	0.11	0.11	0.11	0.00	0.00	0.00	0.00
Others	0.60	0.58	0.50	0.49	2.15	1.93	1.69	1.68	1.30	1.12	0.85	0.83	-0.02	-2.36	-0.29	-26.18

World and Selected Countries and Regions

2/11/2008 2:32:40 PM

Table 12 Cottonseed Area, Yield, and Production
1000 Metric Tons

Country / Region	Area (Million hectares)				Yield (Metric tons per hectare)				Production (Million metric tons)				Change in Production			
	Prel.		2007/08 Proj.		Prel.		2007/08 Proj.		Prel.		2007/08 Proj.		From last month		From last year	
	2005/06	2006/07	Jan	Feb	2005/06	2006/07	Jan	Feb	2005/06	2006/07	Jan	Feb	MMT	Percent	MMT	Percent
World	33.90	33.83	32.88	32.90	1.30	1.35	1.38	1.38	43.94	45.81	44.99	45.36	0.37	0.82	-0.45	-0.97
United States	5.59	5.15	4.25	4.25	1.33	1.29	1.41	1.41	7.41	6.67	5.98	5.98	0.00	0.00	-0.68	-10.23
Total Foreign	28.31	28.68	28.63	28.66	1.29	1.36	1.36	1.37	36.53	39.14	39.01	39.38	0.37	0.94	0.24	0.60
China, Peoples	5.50	6.00	6.10	6.10	2.10	2.32	2.22	2.28	11.56	13.91	13.52	13.91	0.39	2.88	0.00	0.00
South Asia																
India	8.87	9.17	9.50	9.50	0.91	1.00	1.12	1.09	8.09	9.13	10.60	10.40	-0.20	-1.89	1.27	13.94
Pakistan	3.10	3.25	3.25	3.25	1.43	1.33	1.11	1.14	4.43	4.32	3.60	3.70	0.10	2.78	-0.62	-14.31
Former Soviet Union																
Uzbekistan, Republic	1.43	1.43	1.45	1.45	1.75	1.61	1.62	1.66	2.50	2.30	2.35	2.40	0.05	2.13	0.10	4.35
Turkmenistan	0.70	0.60	0.60	0.60	0.54	0.78	0.85	0.85	0.38	0.47	0.51	0.51	0.00	0.00	0.04	8.51
Tajikistan, Republic of	0.26	0.26	0.25	0.25	0.96	0.96	0.90	0.90	0.25	0.25	0.23	0.23	0.00	0.00	-0.02	-8.16
Kazakhstan, Republic	0.20	0.20	0.20	0.20	1.30	1.26	1.23	1.23	0.27	0.25	0.25	0.25	0.00	0.00	0.00	0.00
South America																
Brazil	0.85	1.09	1.13	1.15	2.06	2.38	2.31	2.33	1.75	2.61	2.61	2.68	0.08	2.88	0.08	2.88
Argentina	0.31	0.40	0.40	0.40	0.72	0.71	0.71	0.71	0.22	0.29	0.29	0.29	0.00	0.00	0.00	0.00
Middle East																
Turkey	0.60	0.64	0.57	0.57	1.92	1.98	1.88	1.88	1.15	1.27	1.07	1.07	0.00	0.00	-0.19	-15.34
Syria	0.25	0.21	0.20	0.20	2.88	2.10	2.76	2.76	0.71	0.45	0.55	0.55	0.00	0.00	0.10	22.44
Iran	0.17	0.12	0.12	0.12	0.94	1.02	0.98	0.98	0.16	0.12	0.12	0.12	0.00	0.00	0.00	0.00
Australia	0.34	0.15	0.08	0.08	2.56	2.90	2.45	2.45	0.86	0.42	0.18	0.18	0.00	0.00	-0.24	-56.19
EU-27																
Greece	0.36	0.37	0.31	0.31	1.78	1.22	1.46	1.46	0.64	0.45	0.45	0.45	0.00	0.00	0.00	0.00
Spain	0.09	0.05	0.06	0.06	1.91	1.27	0.92	0.92	0.16	0.07	0.06	0.06	0.00	0.00	-0.01	-10.61
Sub-Saharan Africa																
Burkina	0.63	0.70	0.45	0.43	0.60	0.51	0.48	0.49	0.38	0.36	0.22	0.21	-0.01	-4.17	-0.15	-42.34
Mali	0.52	0.46	0.30	0.30	0.55	0.49	0.47	0.45	0.28	0.22	0.14	0.13	-0.01	-5.63	-0.09	-40.18
Cameroon	0.23	0.20	0.20	0.20	0.92	0.91	0.69	0.69	0.21	0.18	0.14	0.14	0.00	0.00	-0.05	-24.73
Sudan	0.17	0.16	0.06	0.06	1.12	0.72	0.85	0.85	0.19	0.12	0.05	0.05	0.00	0.00	-0.06	-55.65
Zimbabwe	0.37	0.35	0.37	0.40	0.50	0.54	0.58	0.57	0.19	0.19	0.22	0.23	0.01	6.05	0.04	20.00
Nigeria	0.38	0.38	0.40	0.40	0.46	0.46	0.49	0.49	0.17	0.17	0.19	0.19	0.00	0.00	0.02	12.14
Benin	0.20	0.23	0.25	0.25	0.61	0.68	0.66	0.66	0.12	0.16	0.17	0.17	0.00	0.00	0.01	5.10
Uganda	0.27	0.27	0.27	0.27	0.29	0.31	0.40	0.24	0.08	0.08	0.11	0.07	-0.04	-39.45	-0.02	-20.48
Egypt	0.28	0.25	0.25	0.25	1.40	1.41	1.34	1.34	0.39	0.35	0.34	0.34	0.00	0.00	-0.01	-3.46
Mexico	0.13	0.12	0.12	0.12	1.73	1.89	1.85	1.85	0.22	0.22	0.23	0.23	0.00	0.00	0.01	5.99
Burma, Union of	0.30	0.30	0.30	0.30	0.53	0.53	0.53	0.53	0.16	0.16	0.16	0.16	0.00	0.00	0.00	0.00
Others	1.84	1.34	1.44	1.44	0.56	0.49	0.47	0.47	1.04	0.65	0.68	0.68	0.00	0.00	0.02	3.52

World and Selected Countries and Regions

2/11/2008 2:32:42 PM

Table 13 Peanut Area, Yield, and Production
1000 Metric Tons

Country / Region	Area (Million hectares)				Yield (Metric tons per hectare)				Production (Million metric tons)				Change in Production			
	Prel.		2007/08 Proj.		Prel.		2007/08 Proj.		Prel.		2007/08 Proj.		From last month		From last year	
	2005/06	2006/07	Jan	Feb	2005/06	2006/07	Jan	Feb	2005/06	2006/07	Jan	Feb	MMT	Percent	MMT	Percent
World	21.73	21.01	21.69	21.69	1.52	1.54	1.50	1.50	33.04	32.41	32.51	32.51	0.00	0.00	0.10	0.31
United States	0.66	0.49	0.48	0.48	3.35	3.21	3.51	3.51	2.21	1.57	1.70	1.70	0.00	0.00	0.13	8.02
Total Foreign	21.07	20.52	21.20	21.20	1.46	1.50	1.45	1.45	30.83	30.84	30.82	30.82	0.00	0.00	-0.03	-0.08
China, Peoples	4.66	4.57	4.60	4.60	3.08	3.21	3.04	3.04	14.34	14.67	14.00	14.00	0.00	0.00	-0.67	-4.54
South Asia																
India	6.86	5.91	6.50	6.50	0.92	0.91	0.92	0.92	6.30	5.39	6.00	6.00	0.00	0.00	0.62	11.42
Pakistan	0.11	0.11	0.11	0.11	0.90	0.90	0.90	0.90	0.10	0.10	0.10	0.10	0.00	0.00	0.00	0.00
Sub-Saharan Africa																
Nigeria	1.24	1.24	1.25	1.25	1.23	1.23	1.25	1.25	1.52	1.52	1.55	1.55	0.00	0.00	0.03	1.97
Senegal	0.77	0.59	0.65	0.65	0.91	0.77	0.65	0.65	0.70	0.46	0.42	0.42	0.00	0.00	-0.04	-8.70
Chad	0.48	0.48	0.50	0.50	0.94	0.94	0.94	0.94	0.45	0.45	0.47	0.47	0.00	0.00	0.02	4.44
Ghana	0.47	0.47	0.47	0.47	0.94	0.94	0.94	0.94	0.44	0.44	0.44	0.44	0.00	0.00	0.00	0.00
Sudan	0.55	1.00	1.00	1.00	0.67	0.85	0.85	0.85	0.37	0.85	0.85	0.85	0.00	0.00	0.00	0.00
Congo, Democratic	0.46	0.48	0.48	0.48	0.79	0.78	0.78	0.78	0.37	0.37	0.37	0.37	0.00	0.00	0.00	0.00
Burkina	0.35	0.35	0.35	0.35	0.93	0.99	1.01	1.01	0.32	0.34	0.35	0.35	0.00	0.00	0.01	2.94
Guinea	0.21	0.21	0.21	0.21	1.19	1.24	1.24	1.24	0.25	0.26	0.26	0.26	0.00	0.00	0.00	0.00
Cameroon	0.21	0.31	0.31	0.31	0.98	0.76	0.77	0.77	0.20	0.24	0.24	0.24	0.00	0.00	0.01	2.13
Mali	0.21	0.25	0.25	0.25	0.86	1.10	1.10	1.10	0.18	0.28	0.28	0.28	0.00	0.00	0.00	0.00
Malawi	0.21	0.22	0.22	0.22	0.76	0.93	1.20	1.20	0.16	0.20	0.27	0.27	0.00	0.00	0.06	29.90
Cote d'Ivoire	0.15	0.15	0.15	0.15	1.00	1.00	1.00	1.00	0.15	0.15	0.15	0.15	0.00	0.00	0.00	0.00
Uganda	0.21	0.21	0.21	0.21	0.70	0.70	0.70	0.70	0.15	0.15	0.15	0.15	0.00	0.00	0.00	0.00
Central African	0.13	0.13	0.13	0.13	1.12	1.12	1.12	1.12	0.14	0.14	0.14	0.14	0.00	0.00	0.00	0.00
Benin	0.16	0.16	0.16	0.16	0.81	0.81	0.81	0.81	0.13	0.13	0.13	0.13	0.00	0.00	0.00	0.00
Mozambique	0.29	0.29	0.29	0.29	0.38	0.38	0.38	0.38	0.11	0.11	0.11	0.11	0.00	0.00	0.00	0.00
Niger	0.26	0.26	0.26	0.26	0.42	0.42	0.42	0.42	0.11	0.11	0.11	0.11	0.00	0.00	0.00	0.00
South Africa, Republic	0.05	0.04	0.05	0.05	1.86	1.58	1.50	1.50	0.09	0.06	0.08	0.08	0.00	0.00	0.01	19.05
Southeast Asia																
Indonesia	0.74	0.75	0.72	0.72	1.58	1.60	1.60	1.60	1.17	1.20	1.15	1.15	0.00	0.00	-0.05	-4.17
Burma, Union of	0.77	0.80	0.80	0.80	0.99	1.10	1.10	1.10	0.77	0.88	0.88	0.88	0.00	0.00	0.00	0.00
Vietnam	0.27	0.26	0.26	0.26	1.80	1.77	1.77	1.77	0.49	0.46	0.46	0.46	0.00	0.00	0.00	0.00
Thailand	0.04	0.04	0.04	0.04	1.65	1.66	1.64	1.64	0.07	0.07	0.07	0.07	0.00	0.00	0.00	1.47
South America																
Argentina	0.16	0.20	0.20	0.20	3.11	2.88	2.75	2.75	0.51	0.58	0.55	0.55	0.00	0.00	-0.03	-4.35
Brazil	0.12	0.12	0.12	0.12	2.17	2.17	2.17	2.17	0.25	0.25	0.25	0.25	0.00	0.00	0.00	0.00
Egypt	0.06	0.06	0.06	0.06	3.17	3.17	3.17	3.17	0.19	0.19	0.19	0.19	0.00	0.00	0.00	0.00
Mexico	0.04	0.05	0.05	0.05	1.57	1.56	1.56	1.56	0.07	0.07	0.07	0.07	0.00	0.00	0.00	0.00
Others	0.84	0.84	0.84	0.84	0.89	0.89	0.90	0.90	0.74	0.75	0.75	0.75	0.00	0.00	0.00	0.13

World and Selected Countries and Regions

2/11/2008 2:32:42 PM

Table 14 Sunflowerseed Area, Yield, and Production
1000 Metric Tons

Country / Region	Area (Million hectares)				Yield (Metric tons per hectare)				Production (Million metric tons)				Change in Production			
	2005/06	Prel. 2006/07	2007/08 Jan	Proj. Feb	2005/06	Prel. 2006/07	2007/08 Jan	Proj. Feb	2005/06	Prel. 2006/07	2007/08 Jan	Proj. Feb	From last month MMT	Percent	From last year MMT	Percent
World	23.12	23.84	22.69	22.66	1.30	1.26	1.20	1.21	29.99	30.15	27.29	27.33	0.05	0.16	-2.81	-9.33
United States	1.06	0.72	0.81	0.81	1.73	1.36	1.61	1.61	1.82	0.97	1.31	1.31	0.00	0.00	0.34	34.77
Total Foreign	22.06	23.13	21.87	21.84	1.28	1.26	1.19	1.19	28.17	29.17	25.98	26.02	0.05	0.17	-3.15	-10.80
Former Soviet Union																
Russian Federation	5.40	5.90	5.00	5.00	1.19	1.14	1.12	1.13	6.45	6.75	5.60	5.65	0.05	0.89	-1.10	-16.30
Ukraine	3.69	3.90	3.40	3.40	1.27	1.36	1.18	1.24	4.70	5.30	4.00	4.20	0.20	5.00	-1.10	-20.75
Moldova, Republic of	0.20	0.25	0.24	0.24	1.65	1.52	1.35	0.67	0.33	0.38	0.33	0.16	-0.17	-50.77	-0.22	-57.89
Kazakhstan, Republic	0.40	0.40	0.40	0.40	0.66	0.66	0.66	0.66	0.27	0.27	0.27	0.27	0.00	0.00	0.00	0.00
South America																
Argentina	2.20	2.40	2.60	2.60	1.73	1.46	1.69	1.69	3.80	3.50	4.40	4.40	0.00	0.00	0.90	25.71
Uruguay	0.06	0.04	0.02	0.02	1.37	1.02	1.20	1.20	0.08	0.04	0.02	0.02	0.00	0.00	-0.02	-44.19
Bolivia	0.16	0.16	0.16	0.14	1.06	1.06	1.06	0.93	0.17	0.17	0.17	0.13	-0.04	-23.53	-0.04	-23.53
China, Peoples	1.02	1.00	0.99	0.99	1.89	1.90	1.82	1.82	1.93	1.90	1.80	1.80	0.00	0.00	-0.10	-5.26
EU-27																
France	0.65	0.64	0.54	0.53	2.35	2.16	2.39	2.44	1.52	1.38	1.28	1.28	0.00	0.00	-0.10	-7.51
Hungary	0.51	0.54	0.48	0.48	2.17	2.21	1.68	1.68	1.10	1.19	0.80	0.80	0.00	0.00	-0.39	-32.55
Spain	0.52	0.63	0.70	0.70	0.70	0.96	1.00	1.00	0.36	0.61	0.70	0.70	0.00	0.00	0.09	15.32
Italy	0.13	0.15	0.11	0.11	2.22	2.12	2.50	2.50	0.29	0.31	0.28	0.28	0.00	0.00	-0.03	-10.71
Slovakia	0.10	0.10	0.08	0.08	2.37	2.11	2.25	2.25	0.23	0.20	0.18	0.18	0.00	0.00	-0.02	-10.00
South Asia																
India	2.41	2.15	2.50	2.50	0.64	0.60	0.66	0.66	1.55	1.28	1.65	1.65	0.00	0.00	0.37	28.91
Pakistan	0.33	0.41	0.45	0.45	1.07	1.28	1.24	1.24	0.35	0.52	0.56	0.56	0.00	0.00	0.04	7.69
Turkey	0.43	0.48	0.47	0.47	1.74	1.77	1.49	1.49	0.75	0.85	0.70	0.70	0.00	0.00	-0.15	-17.65
South Africa,	0.47	0.32	0.50	0.50	1.11	0.98	1.20	1.20	0.52	0.31	0.60	0.60	0.00	0.00	0.29	94.17
Burma, Union of	0.97	0.97	0.97	0.97	0.36	0.36	0.36	0.36	0.35	0.35	0.35	0.35	0.00	0.00	0.00	0.00
Serbia	0.00	0.21	0.13	0.13	0.00	1.90	2.00	2.00	0.00	0.40	0.26	0.26	0.00	0.00	-0.14	-35.00
Canada	0.08	0.08	0.08	0.08	1.19	2.00	1.58	1.58	0.09	0.15	0.13	0.13	0.00	0.00	-0.03	-16.67
Australia	0.08	0.02	0.05	0.05	1.24	1.06	1.11	1.11	0.10	0.02	0.05	0.05	0.00	0.00	0.03	177.78
Others	2.28	2.41	2.02	2.02	1.43	1.37	0.92	0.92	3.25	3.30	1.86	1.86	0.00	0.00	-1.44	-43.63

World and Selected Countries and Regions

2/11/2008 2:32:42 PM

Table 15 Rapeseed Area, Yield, and Production
1000 Metric Tons

Country / Region	Area (Million hectares)				Yield (Metric tons per hectare)				Production (Million metric tons)				Change in Production			
	Prel.		2007/08 Proj.		Prel.		2007/08 Proj.		Prel.		2007/08 Proj.		From last month		From last year	
	2005/06	2006/07	Jan	Feb	2005/06	2006/07	Jan	Feb	2005/06	2006/07	Jan	Feb	MMT	Percent	MMT	Percent
World	27.45	27.10	28.46	28.72	1.78	1.73	1.70	1.69	48.74	46.80	48.29	48.52	0.23	0.48	1.72	3.66
United States	0.45	0.41	0.47	0.47	1.59	1.53	1.40	1.40	0.72	0.63	0.66	0.66	0.00	0.00	0.03	4.27
Total Foreign	26.99	26.69	27.99	28.25	1.78	1.73	1.70	1.69	48.02	46.17	47.63	47.86	0.23	0.48	1.69	3.66
EU-27																
Germany	1.34	1.43	1.55	1.55	3.76	3.73	3.42	3.42	5.05	5.34	5.30	5.30	0.00	0.00	-0.04	-0.69
France	1.23	1.40	1.60	1.60	3.66	2.92	2.88	2.89	4.49	4.10	4.60	4.62	0.02	0.43	0.52	12.71
United Kingdom	0.59	0.58	0.62	0.68	3.21	3.28	3.23	3.10	1.90	1.89	2.00	2.11	0.11	5.50	0.22	11.64
Poland	0.55	0.62	0.80	0.80	2.64	2.65	2.63	2.63	1.45	1.65	2.10	2.10	0.00	0.00	0.45	27.12
Czech Republic	0.27	0.29	0.34	0.34	2.88	3.01	3.10	3.10	0.77	0.88	1.04	1.04	0.00	0.00	0.16	17.95
Denmark	0.13	0.13	0.18	0.18	2.74	3.44	3.33	3.33	0.34	0.43	0.60	0.60	0.00	0.00	0.17	39.53
Hungary	0.12	0.14	0.22	0.22	2.32	2.38	2.16	2.16	0.28	0.33	0.48	0.48	0.00	0.00	0.14	43.50
Romania	0.07	0.10	0.35	0.35	1.29	1.63	1.00	1.00	0.09	0.17	0.35	0.35	0.00	0.00	0.18	105.88
Slovakia	0.11	0.13	0.14	0.14	2.20	2.16	2.36	2.36	0.24	0.27	0.33	0.33	0.00	0.00	0.06	22.22
Sweden	0.08	0.09	0.09	0.09	2.41	2.45	2.47	2.47	0.20	0.22	0.23	0.23	0.00	0.00	0.00	0.90
Lithuania	0.11	0.15	0.18	0.18	1.84	1.13	1.89	1.89	0.20	0.17	0.33	0.33	0.00	0.00	0.16	94.12
Latvia	0.07	0.08	0.10	0.10	2.06	1.57	2.10	2.10	0.15	0.13	0.21	0.21	0.00	0.00	0.08	61.54
Austria	0.04	0.04	0.05	0.05	2.97	3.26	3.47	3.47	0.10	0.14	0.16	0.16	0.00	0.00	0.02	13.87
Finland	0.08	0.08	0.09	0.09	1.47	1.33	1.44	1.44	0.11	0.10	0.13	0.13	0.00	0.00	0.03	30.00
Estonia	0.05	0.06	0.07	0.07	1.77	1.35	1.93	1.93	0.08	0.09	0.14	0.14	0.00	0.00	0.05	58.82
China, Peoples	7.28	6.88	6.60	6.60	1.79	1.84	1.76	1.76	13.05	12.65	11.60	11.60	0.00	0.00	-1.05	-8.29
South Asia																
India	7.38	6.64	5.70	5.90	0.95	0.87	0.95	0.93	7.00	5.80	5.40	5.50	0.10	1.85	-0.30	-5.17
Pakistan	0.23	0.25	0.26	0.26	0.79	1.30	1.27	1.27	0.18	0.32	0.33	0.33	0.00	0.00	0.01	3.77
Bangladesh	0.30	0.31	0.31	0.31	0.83	0.82	0.82	0.82	0.25	0.26	0.26	0.26	0.00	0.00	0.00	0.00
Canada	5.28	5.24	5.91	5.91	1.83	1.72	1.48	1.48	9.66	9.00	8.75	8.75	0.00	0.00	-0.25	-2.78
Australia	0.97	0.70	0.80	0.80	1.46	0.74	1.13	1.13	1.42	0.52	0.90	0.90	0.00	0.00	0.38	74.08
Former Soviet Union																
Ukraine	0.20	0.39	0.90	0.90	1.46	1.54	1.22	1.22	0.29	0.60	1.10	1.10	0.00	0.00	0.50	83.33
Russian Federation	0.24	0.48	0.55	0.55	1.24	1.09	1.03	1.03	0.30	0.53	0.57	0.57	0.00	0.00	0.04	7.62
Belarus	0.12	0.15	0.15	0.15	1.23	1.20	1.20	1.20	0.15	0.18	0.18	0.18	0.00	0.00	0.00	0.00
Paraguay	0.05	0.10	0.10	0.10	1.50	1.50	1.50	1.50	0.08	0.15	0.15	0.15	0.00	0.00	0.00	0.00
Others	0.12	0.23	0.34	0.34	1.64	1.16	1.21	1.21	0.20	0.27	0.42	0.42	0.00	0.00	0.15	54.65

World and Selected Countries and Regions

2/11/2008 2:32:43 PM

Table 16 Copra, Palm Kernel, and Palm Oil Production
1000 Metric Tons

Country / Region	Production (Million metric tons)				Change in Production			
	2005/06	Prel. 2006/07	2007/08 Proj.		From last month		From last year	
			Jan	Feb	MMT	Percent	MMT	Percent
Oilseed, Copra								
Philippines	2.40	2.20	2.10	2.10	0.00	0.00	-0.10	-0.05
Indonesia	1.44	1.44	1.50	1.50	0.00	0.00	0.06	0.04
India	0.65	0.62	0.75	0.75	0.00	0.00	0.13	0.21
Vietnam	0.24	0.24	0.24	0.24	0.00	0.00	0.00	0.00
Mexico	0.22	0.23	0.23	0.23	0.00	0.00	0.00	0.00
Papua New Guinea	0.11	0.11	0.11	0.11	0.00	0.00	0.00	0.00
Sri Lanka	0.08	0.08	0.08	0.08	0.00	0.00	0.00	0.00
Thailand	0.07	0.07	0.07	0.07	0.00	0.00	0.00	0.00
Mozambique	0.05	0.05	0.05	0.05	0.00	0.00	0.00	0.00
Cote d'Ivoire	0.05	0.05	0.05	0.05	0.00	0.00	0.00	0.00
World	5.50	5.28	5.37	5.37	0.00	0.00	0.09	0.02
Oilseed, Palm Kernel								
Indonesia	4.24	4.45	4.80	4.80	0.00	0.00	0.35	0.08
Malaysia	4.05	4.07	4.40	4.40	0.00	0.00	0.33	0.08
Nigeria	0.65	0.67	0.67	0.67	0.00	0.00	0.01	0.02
Thailand	0.18	0.20	0.20	0.20	0.00	0.00	0.00	0.00
Colombia	0.16	0.17	0.17	0.17	0.00	0.00	0.00	0.00
Papua New Guinea	0.08	0.08	0.08	0.08	0.00	0.00	0.00	0.00
Cote d'Ivoire	0.08	0.08	0.08	0.08	0.00	0.00	0.00	0.00
Cameroon	0.07	0.07	0.07	0.07	0.00	0.00	0.00	0.00
Ecuador	0.05	0.06	0.06	0.06	0.00	0.00	0.00	0.00
Congo, Democratic Rep of	0.06	0.06	0.06	0.06	0.00	0.00	0.00	0.00
World	9.98	10.27	10.95	10.95	0.00	0.00	0.68	0.07
Oil, Palm								
Indonesia	15.56	16.60	18.30	18.30	0.00	0.00	1.70	0.10
Malaysia	15.49	15.29	16.60	17.00	0.40	0.02	1.71	0.11
Thailand	0.76	0.85	0.95	0.95	0.00	0.00	0.10	0.12
Nigeria	0.80	0.81	0.82	0.82	0.00	0.00	0.01	0.01
Colombia	0.69	0.77	0.83	0.83	0.00	0.00	0.06	0.08
Papua New Guinea	0.35	0.38	0.38	0.38	0.00	0.00	0.00	0.00
Ecuador	0.31	0.34	0.34	0.34	0.00	0.00	0.00	0.00
Cote d'Ivoire	0.36	0.32	0.32	0.32	0.00	0.00	0.00	0.00
Costa Rica	0.29	0.29	0.29	0.29	0.00	0.00	0.00	0.00
Congo, Democratic Rep of	0.18	0.18	0.18	0.18	0.00	0.00	0.00	0.00
World	35.94	37.02	40.20	40.60	0.40	0.01	3.58	0.10

World and Selected Countries and Regions

2/11/2008 2:32:43 PM

Table 17 Cotton Area, Yield, and Production
1000 480 lb. Bales

Country / Region	Area (Million hectares)				Yield (Kilograms per hectare)				Production (Million 480 lb. bales)				Change in Production			
	Prel.		2007/08 Proj.		Prel.		2007/08 Proj.		Prel.		2007/08 Proj.		From last month		From last year	
	2005/06	2006/07	Jan	Feb	2005/06	2006/07	Jan	Feb	2005/06	2006/07	Jan	Feb	MBales	Percent	MBales	Percent
World	34.884	34.715	33.731	33.756	735.000	766.000	763.000	769.000	117.690	122.071	118.253	119.208	0.955	0.808	-2.863	-2.345
United States	5.586	5.152	4.246	4.246	931.000	912.000	976.000	976.000	23.890	21.588	19.033	19.033	0.000	0.000	-2.555	-11.835
Total Foreign	29.298	29.563	29.485	29.510	697.000	740.000	733.000	739.000	93.800	100.483	99.220	100.175	0.955	0.963	-0.308	-0.307
China, Peoples	5.500	6.000	6.100	6.100	1,168.0	1,288.0	1,231.0	1,267.0	29.500	35.500	34.500	35.500	1.000	2.899	0.000	0.000
South Asia																
India	8.873	9.166	9.500	9.500	467.000	518.000	573.000	562.000	19.050	21.800	25.000	24.500	-0.500	-2.000	2.700	12.385
Pakistan	3.101	3.250	3.250	3.250	714.000	663.000	549.000	576.000	10.165	9.900	8.200	8.600	0.400	4.878	-1.300	-13.131
Former Soviet Union																
Uzbekistan, Republic	1.432	1.430	1.450	1.450	844.000	815.000	826.000	826.000	5.550	5.350	5.500	5.500	0.000	0.000	0.150	2.804
Turkmenistan	0.600	0.600	0.600	0.600	354.000	435.000	472.000	472.000	0.975	1.200	1.300	1.300	0.000	0.000	0.100	8.333
Tajikistan, Republic of	0.255	0.255	0.250	0.250	542.000	542.000	523.000	523.000	0.635	0.635	0.600	0.600	0.000	0.000	-0.035	-5.512
Kazakhstan, Republic	0.204	0.195	0.200	0.200	720.000	698.000	680.000	680.000	0.675	0.625	0.625	0.625	0.000	0.000	0.000	0.000
Sub-Saharan Africa																
Burkina	0.630	0.700	0.450	0.425	472.000	404.000	377.000	384.000	1.367	1.300	0.780	0.750	-0.030	-3.846	-0.550	-42.308
Mali	0.521	0.460	0.300	0.300	419.000	375.000	363.000	345.000	1.003	0.792	0.500	0.475	-0.025	-5.000	-0.317	-40.025
Zimbabwe	0.370	0.350	0.370	0.400	288.000	311.000	332.000	327.000	0.490	0.500	0.565	0.600	0.035	6.195	0.100	20.000
Benin	0.200	0.231	0.250	0.250	400.000	448.000	435.000	435.000	0.367	0.475	0.500	0.500	0.000	0.000	0.025	5.263
Cote d'Ivoire	0.265	0.214	0.200	0.200	411.000	317.000	299.000	299.000	0.500	0.312	0.275	0.275	0.000	0.000	-0.037	-11.859
Cameroon	0.225	0.200	0.200	0.200	402.000	397.000	299.000	299.000	0.415	0.365	0.275	0.275	0.000	0.000	-0.090	-24.658
Nigeria	0.380	0.380	0.395	0.395	229.000	229.000	248.000	248.000	0.400	0.400	0.450	0.450	0.000	0.000	0.050	12.500
Sudan	0.170	0.160	0.060	0.060	474.000	306.000	363.000	363.000	0.370	0.225	0.100	0.100	0.000	0.000	-0.125	-55.556
South America																
Brazil	0.850	1.094	1.130	1.150	1,204.0	1,393.0	1,349.0	1,363.0	4.700	7.000	7.000	7.200	0.200	2.857	0.200	2.857
Argentina	0.305	0.400	0.360	0.360	446.000	435.000	438.000	438.000	0.625	0.800	0.725	0.725	0.000	0.000	-0.075	-9.375
Paraguay	0.240	0.125	0.080	0.080	236.000	279.000	354.000	354.000	0.260	0.160	0.130	0.130	0.000	0.000	-0.030	-18.750
Middle East																
Turkey	0.600	0.640	0.570	0.570	1,288.0	1,327.0	1,261.0	1,261.0	3.550	3.900	3.300	3.300	0.000	0.000	-0.600	-15.385
Syria	0.245	0.214	0.200	0.200	1,422.0	1,038.0	1,252.0	1,252.0	1.600	1.020	1.150	1.150	0.000	0.000	0.130	12.745
Iran	0.165	0.115	0.120	0.120	699.000	757.000	726.000	726.000	0.530	0.400	0.400	0.400	0.000	0.000	0.000	0.000
Australia	0.336	0.145	0.075	0.075	1,814.0	2,027.0	1,742.0	1,742.0	2.800	1.350	0.600	0.600	0.000	0.000	-0.750	-55.556
EU-27																
Greece	0.355	0.330	0.310	0.310	1,211.0	924.000	983.000	983.000	1.975	1.400	1.400	1.400	0.000	0.000	0.000	0.000
Spain	0.086	0.052	0.064	0.064	1,342.0	892.000	646.000	646.000	0.530	0.213	0.190	0.190	0.000	0.000	-0.023	-10.798
Egypt	0.275	0.246	0.250	0.250	743.000	863.000	958.000	914.000	0.938	0.975	1.100	1.050	-0.050	-4.545	0.075	7.692
Mexico	0.126	0.115	0.105	0.105	1,097.0	1,231.0	1,348.0	1,348.0	0.635	0.650	0.650	0.650	0.000	0.000	0.000	0.000
Others	2.989	2.496	2.646	2.646	306.000	282.000	280.000	274.000	4.195	3.236	3.405	3.330	-0.075	-2.203	0.094	2.905

World and Selected Countries and Regions

2/11/2008 2:32:45 PM

TABLE 18

The table below presents a 26-year record of the differences between the February projection and the final estimate. Using world wheat production as an example, changes between the February projection and the final estimate have averaged 2.2 million tons (0.2 percent) and ranged from -7.3 to 6.8 million tons. The February projection has been below the final 19 times and above the final 7 times.

RELIABILITY OF PRODUCTION PROJECTIONS

COMMODITY AND REGION	PROJECTION AND FINAL ESTIMATES, 1981/82 - 2006/07 1/					
	Difference		Lowest	Highest	Below	Above
	Average	Average	Difference		Final	Final
	Percent	---Million metric tons---			Number of years 2/	
WHEAT						
World	0.4	2.2	-7.3	6.8	19	7
U.S.	0.1	0.1	-0.2	0.1	11	6
Foreign	0.5	2.2	-7.3	6.8	19	7
COARSE GRAINS 3/						
World	0.9	8.1	-19.8	7.3	20	6
U.S.	0.1	0.1	-0.2	1.3	12	6
Foreign	1.3	8.1	-19.8	7.3	18	7
RICE (Milled)						
World	1.2	4.3	-14.0	1.9	19	7
U.S.	1.1	0.1	-0.3	0.2	11	4
Foreign	1.3	4.3	-14.0	1.8	19	7
SOYBEANS						
World	2.1	3.3	-7.4	15.3	17	9
U.S.	0.9	0.5	-1.6	1.8	10	11
Foreign	3.8	3.1	-7.4	14.8	19	7
	---Million 480-lb. bales---					
COTTON						
World	1.8	1.7	-5.4	2.8	20	6
U.S.	0.6	0.1	-0.2	0.3	10	15
Foreign	2.3	1.7	-5.7	2.7	20	6
UNITED STATES	-----Million bushels-----					
CORN	0.0	2	-8	38	2	1
SORGHUM	0.0	0	0	4	0	2
BARLEY	0.3	1	-3	11	11	4
OATS	0.1	0	-2	1	4	3

1/ The final estimate for 1981/82-2005/06 is defined as the first December estimate following the marketing year.

2/ May not total 25 if projection was the same as the final.

3/ Includes corn, sorghum, barley, oats, rye, millet, and mixed grain.