





# Dwelling Burglary

**The 'near repeat' phenomena –  
Predictive analysis?**

Integrity

Professionalism

Fairness

Respect



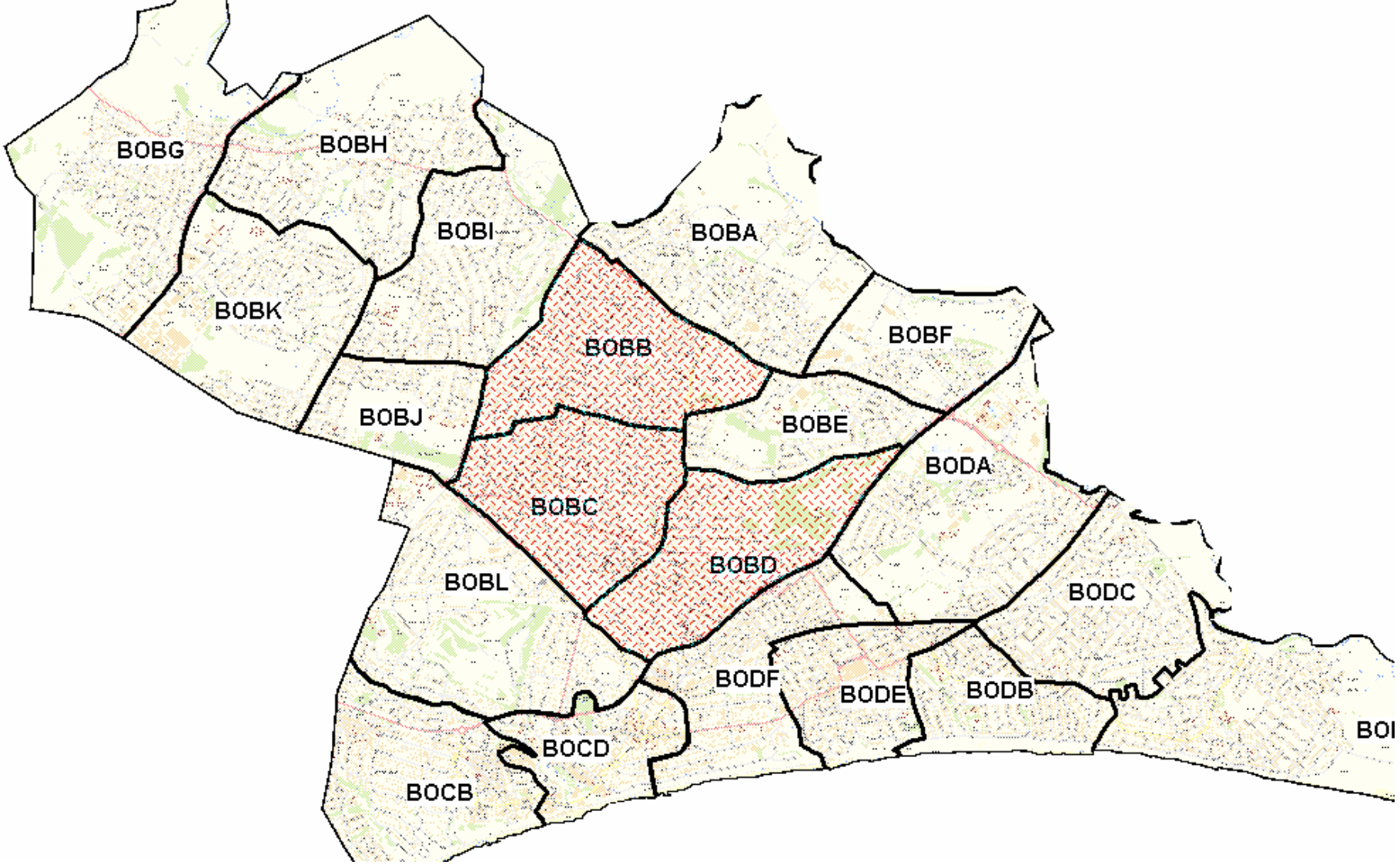
 **And your point is?**

**In certain space time situations  
each dwelling burglary event  
can be used as a predictive  
indicator**

**If we can predict crime in space &  
time then we can REDUCE crime in  
space & time.**



# Where in Bournemouth?





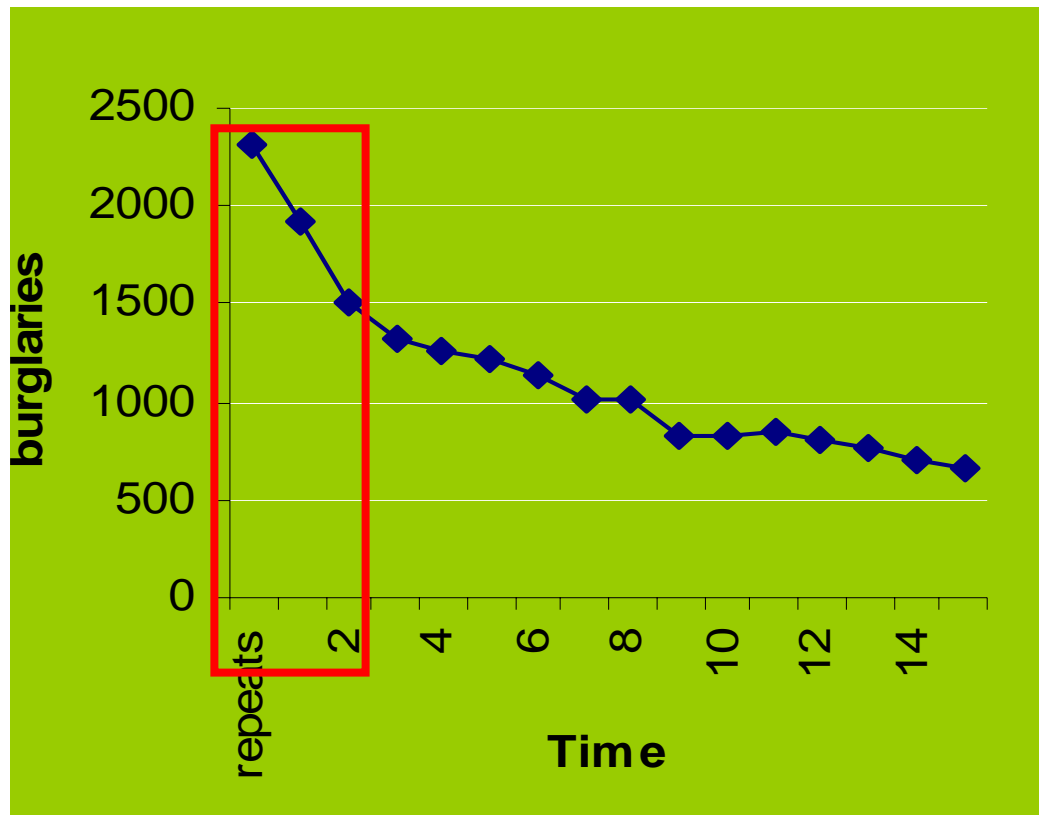
# Reduction Strategy

- **Trigger plan when burglary occurs in designated beat area**
- **Prepare map & identify high risk properties**
- **PCSO's &/or other resources to visit high risk properties asap**

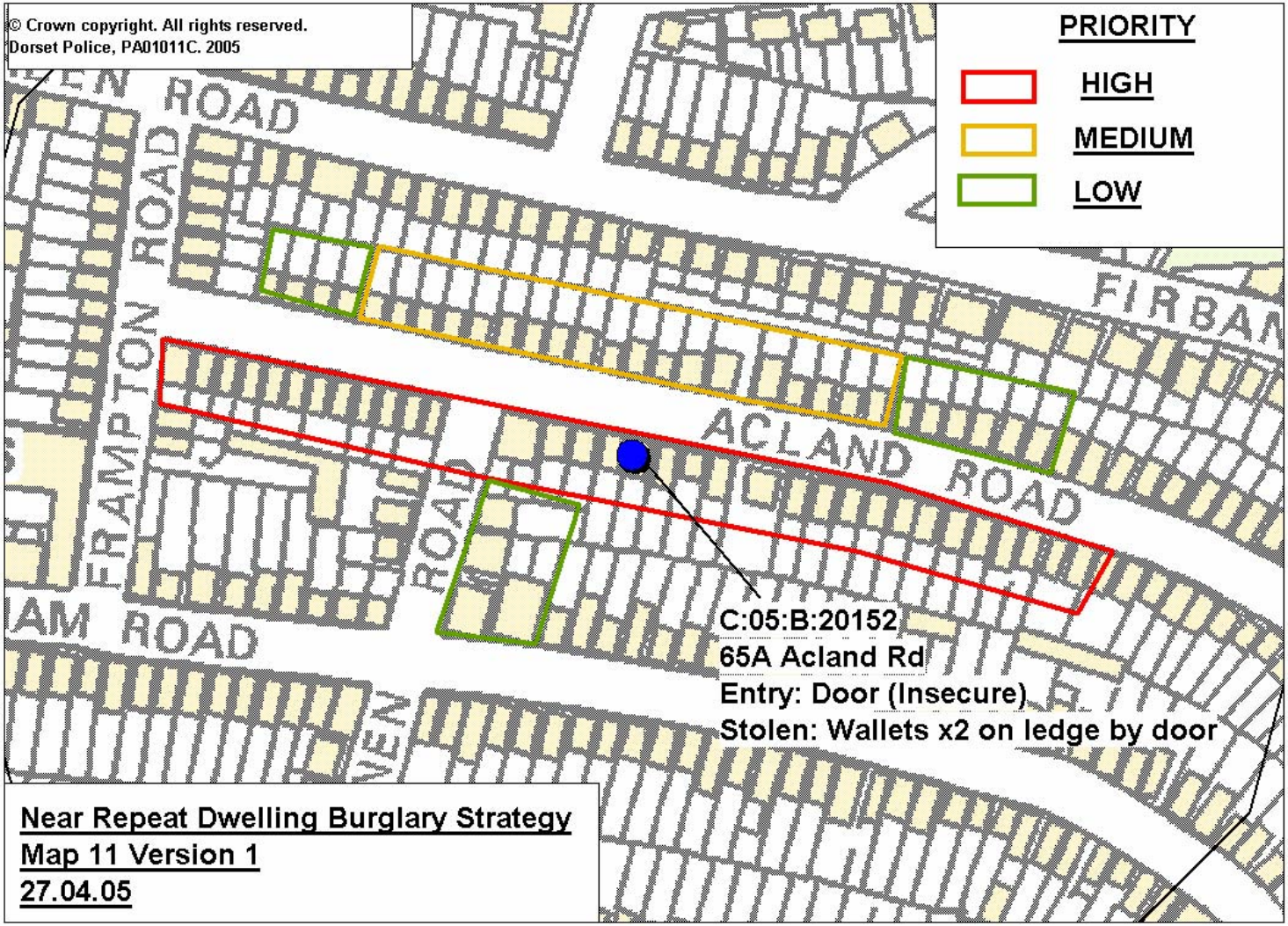


# Reduction Strategy

- **Why a.s.a.p.?**



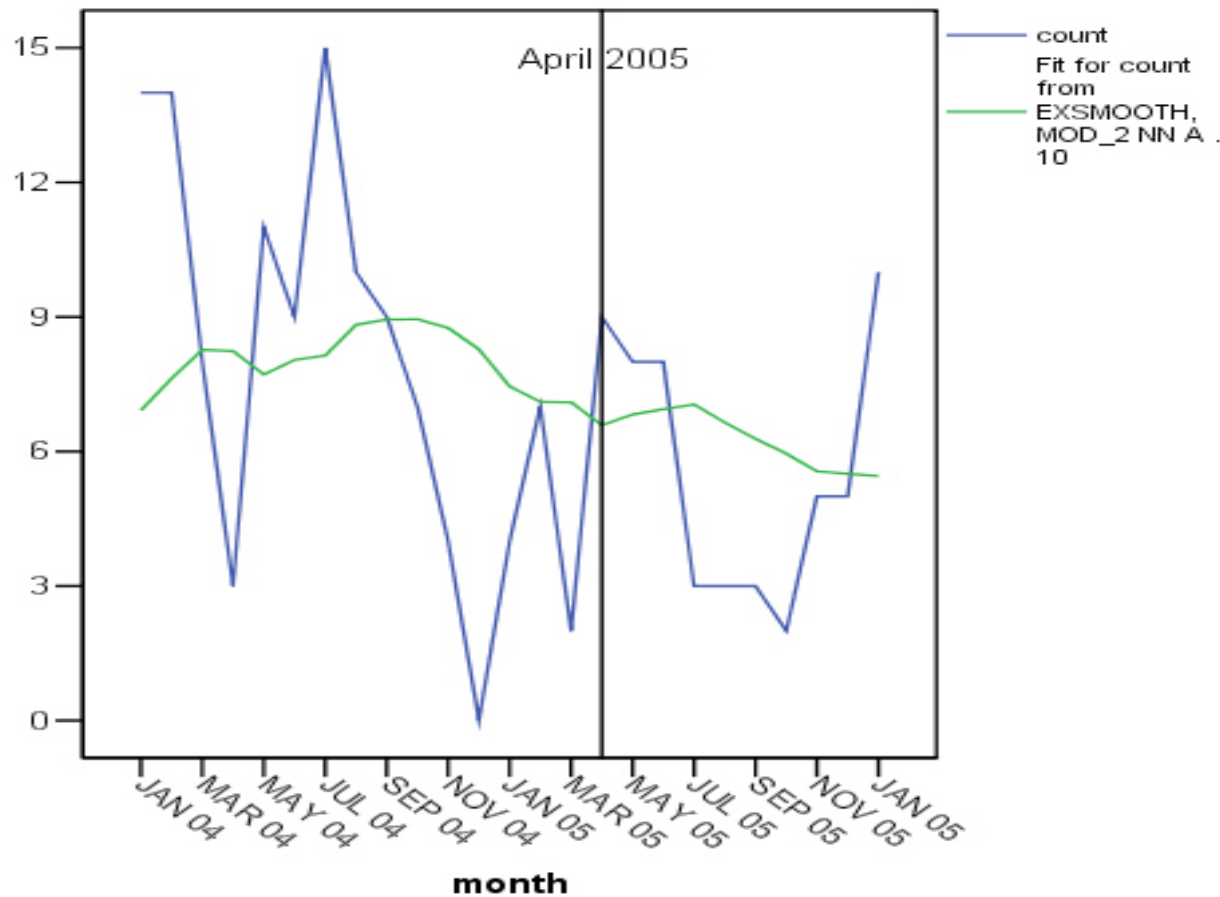
- **Distance decay effect – Best window of opportunity is 48 hours.**





# Evaluation

## Divisional reduction 2004/'05 to 2005/06 –27%



**Near repeat  
area  
reduction  
32.5%**

Integrity

Professionalism

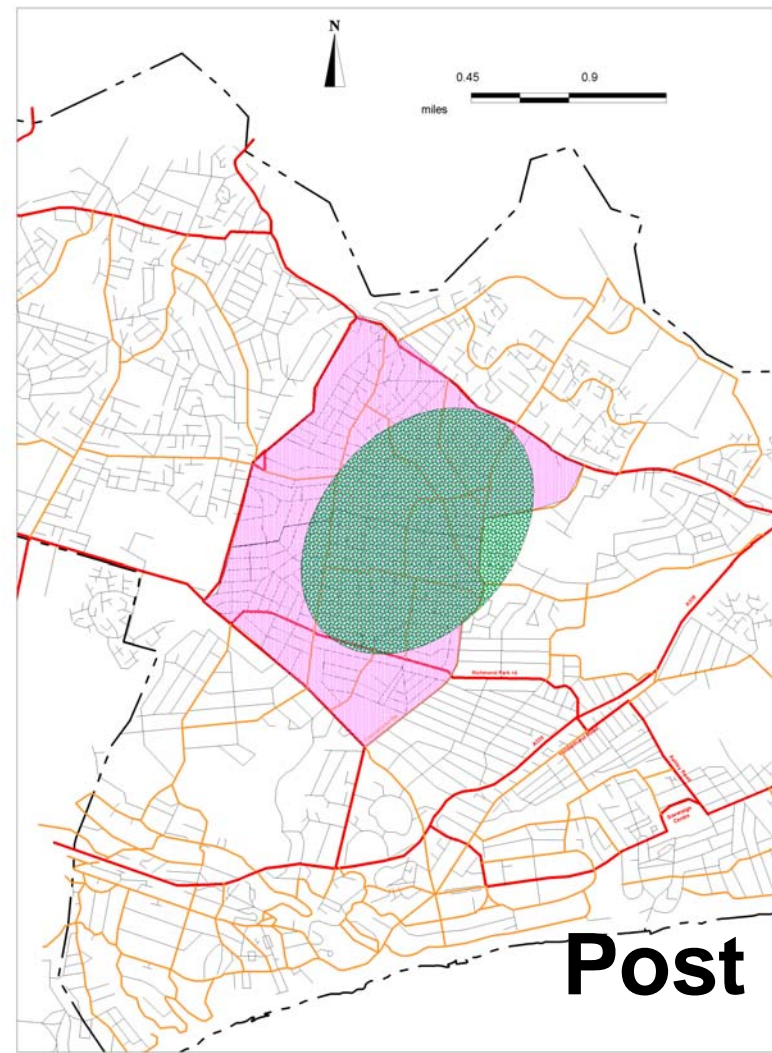
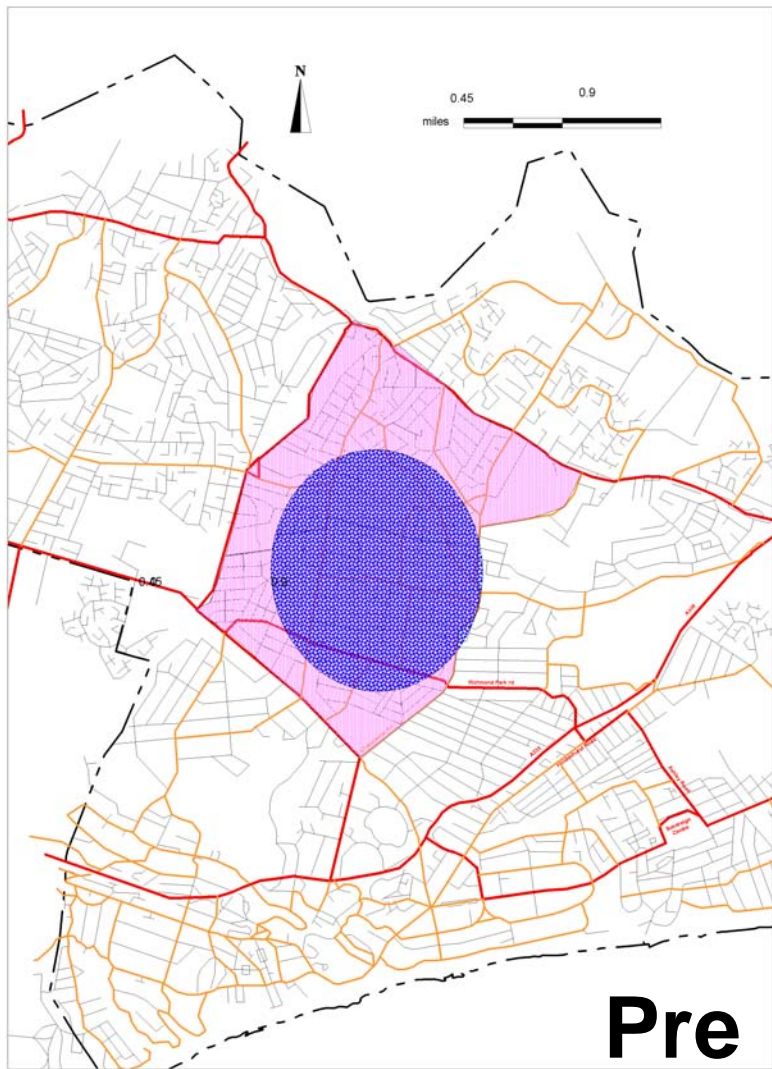
Fairness

Respect





# Evaluation



Integrity

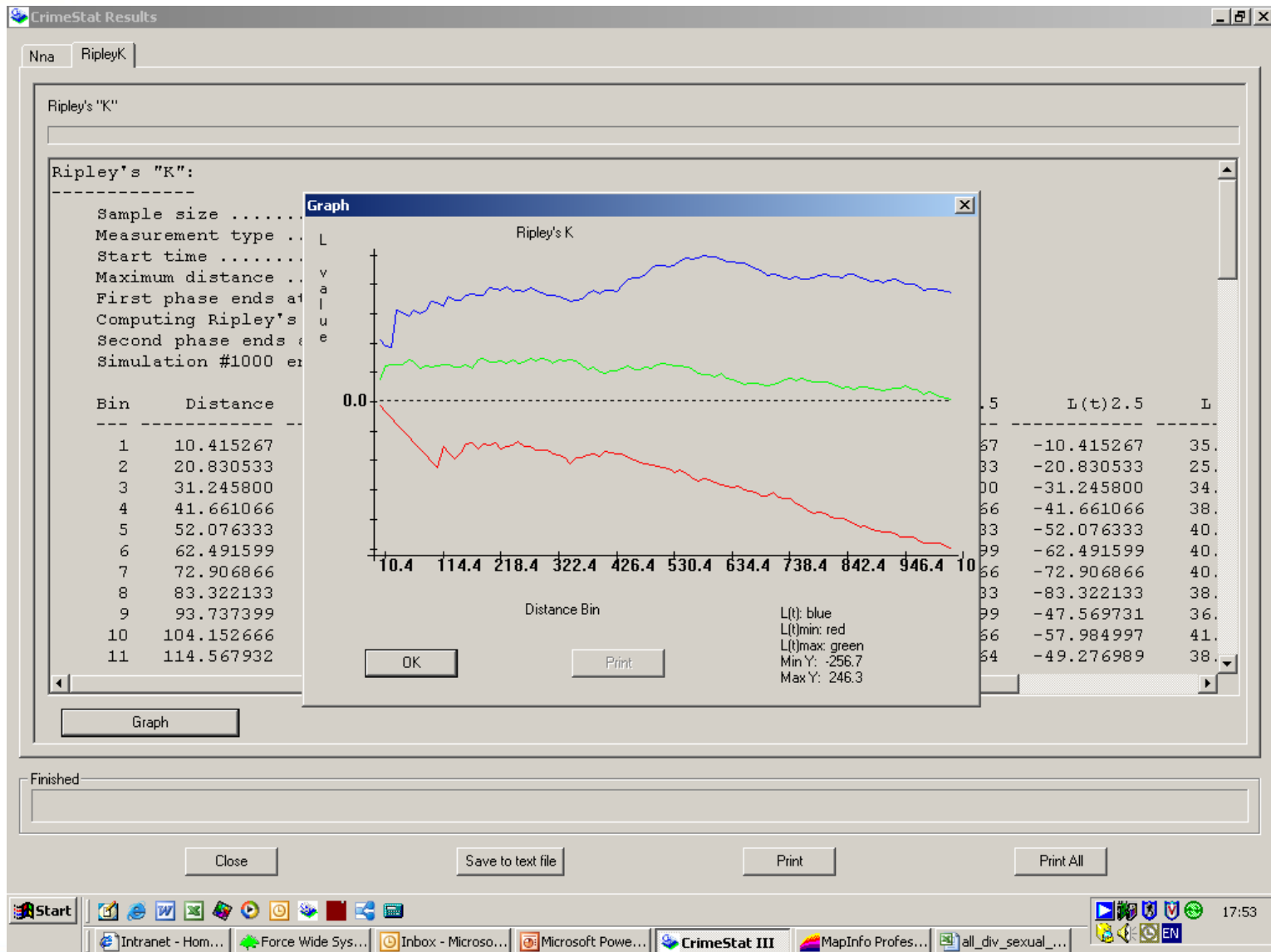
Professionalism

Fairness

Respect

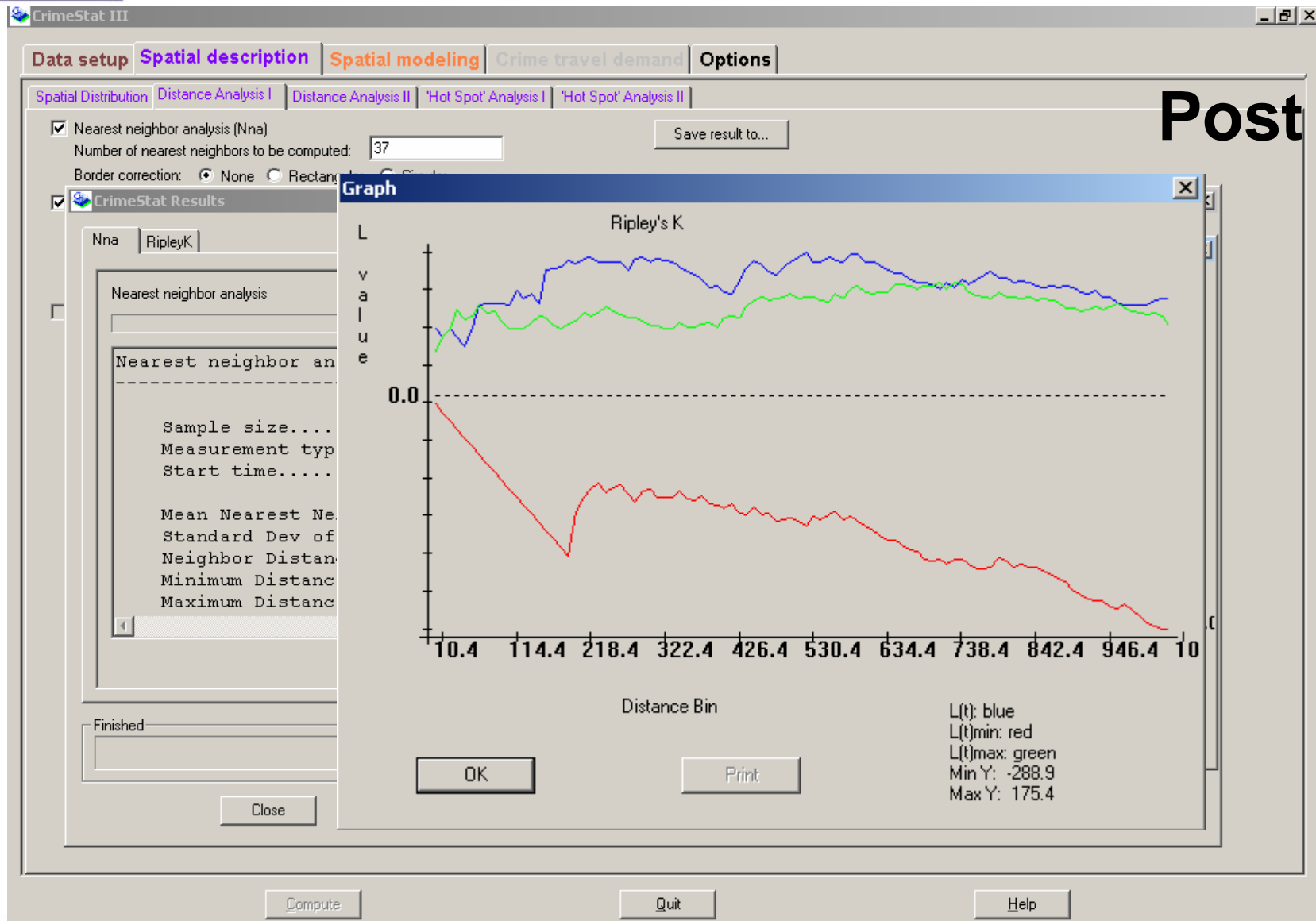


# Evaluation





# Evaluation



# Post



## **New advances**

- **Community support**
  - **Text messaging**
    - **Auto crime**
- **Enforcement opportunities**
- **Other acquisitive crime types?**



Derek.Johnson@Dorset.pnn.Police.Co.UK

Integrity

Professionalism

Fairness

Respect